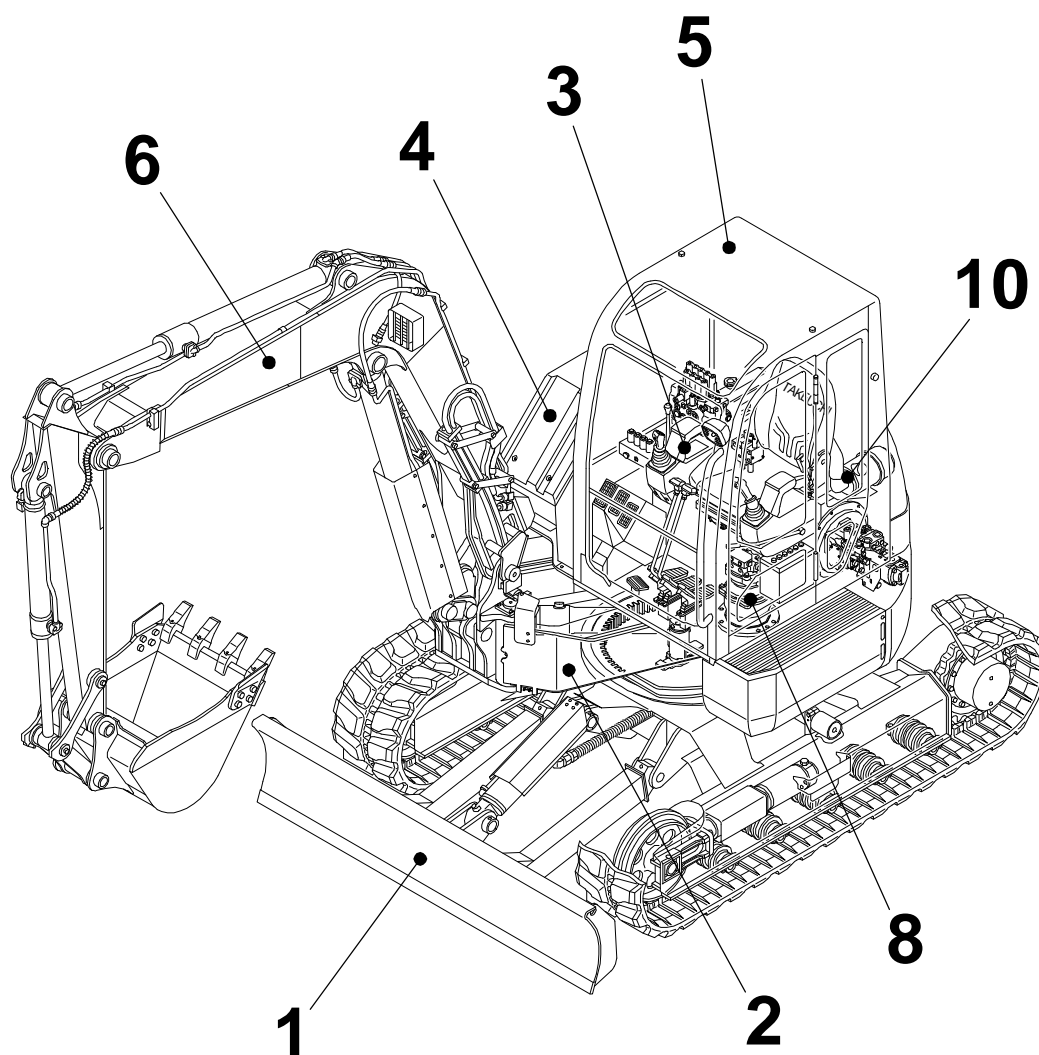


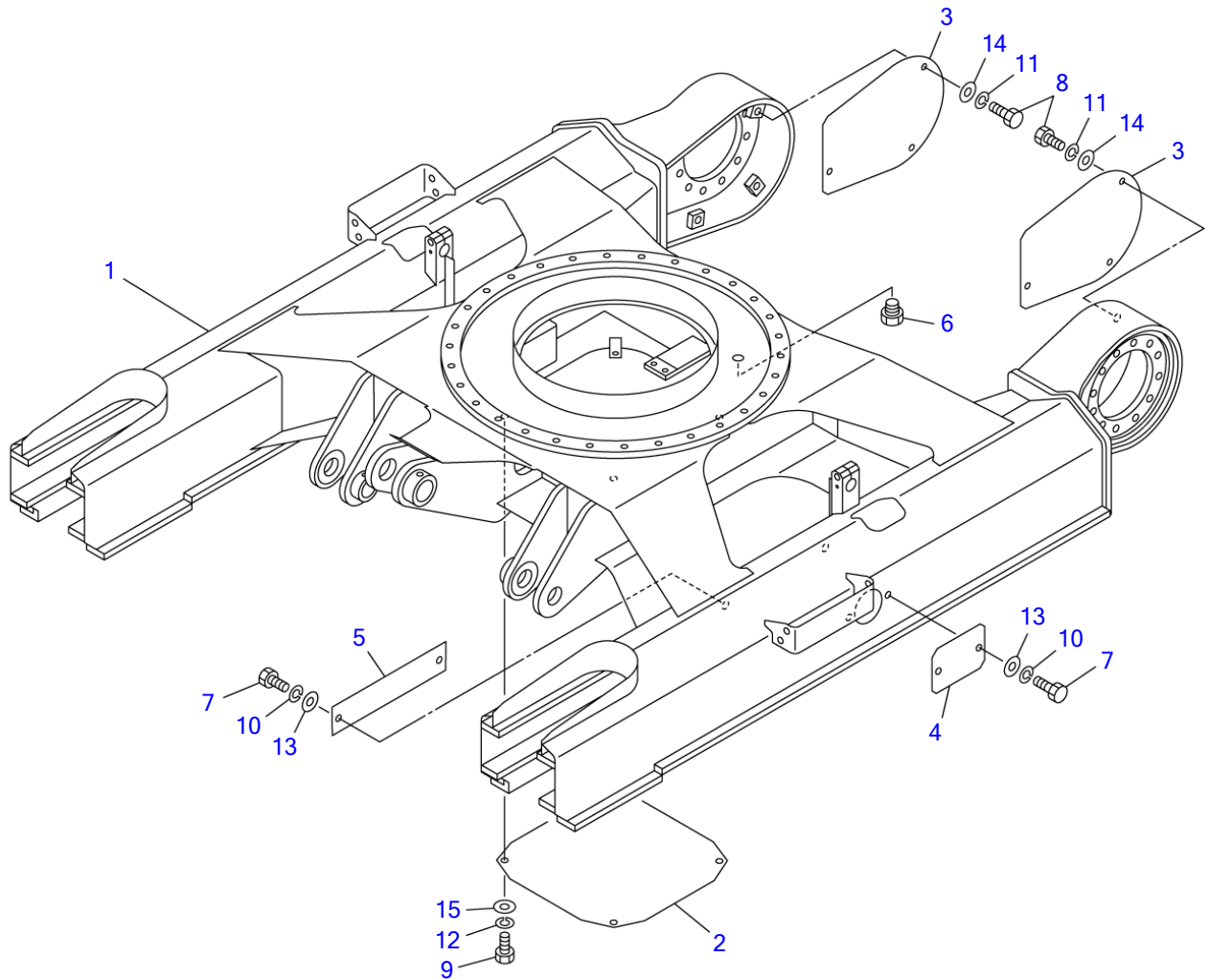
TB180FR

Book No.BL8Z001
Serial No.17840001 -



TAKEUCHI

		INDEX							
Item	Part number	Description	Q'ty	Chan.	Serial No.	Serv.	Remarks		
1		UNDERCARRIAGE							
2		TURNTABLE & CONTROL LEVER							
3		ENGINE & ELECTRICAL SYSTEM							
4		HYDRAULIC PIPNG & TANK							
5		COVER & CAB							
6		HOE ATTACHMENT							
7		DECAL & TOOL							
8		HYDRAULIC DEVICE							
10		ENGINE (4TNV98-ZQTBZ)							
		2008.02.06							
99		KITS, ATTACHMENTS AND QUICK REFERENCE							

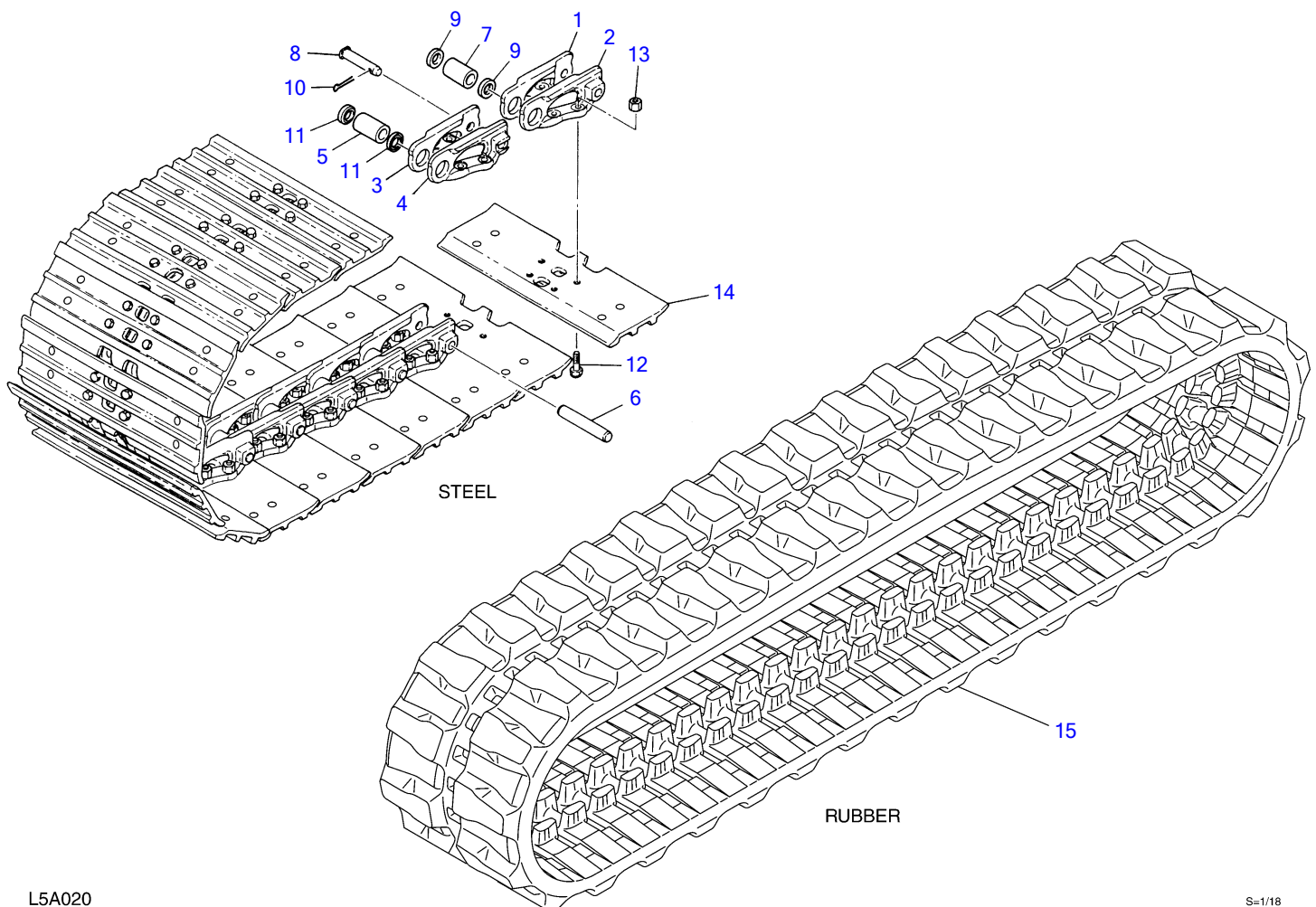


L5A010

S=1/18

LOWER FRAME

Item	Part number	Description	Q'ty	Chan.	Serial No.	Serv.	Remarks
		FRAME ASSY, lower					
1	X *****_*****	FRAME	1				
2	0561021010	COVER	1				
3	0561027020	COVER	2				
4	0561017400	COVER	2				
5	0561019400	COVER	2				
6	1501710010	PLUG	1				
7	1100040816	BOLT	8				
8	1100041020	BOLT	6				
9	1100041225	BOLT	4				
10	1140020008	WASHER, spring	8				
11	1140020010	WASHER, spring	6				
12	1140020012	WASHER, spring	4				
13	1141110008	WASHER	8				
14	1141110010	WASHER	6				
15	1141110012	WASHER	4				
	L5a011						

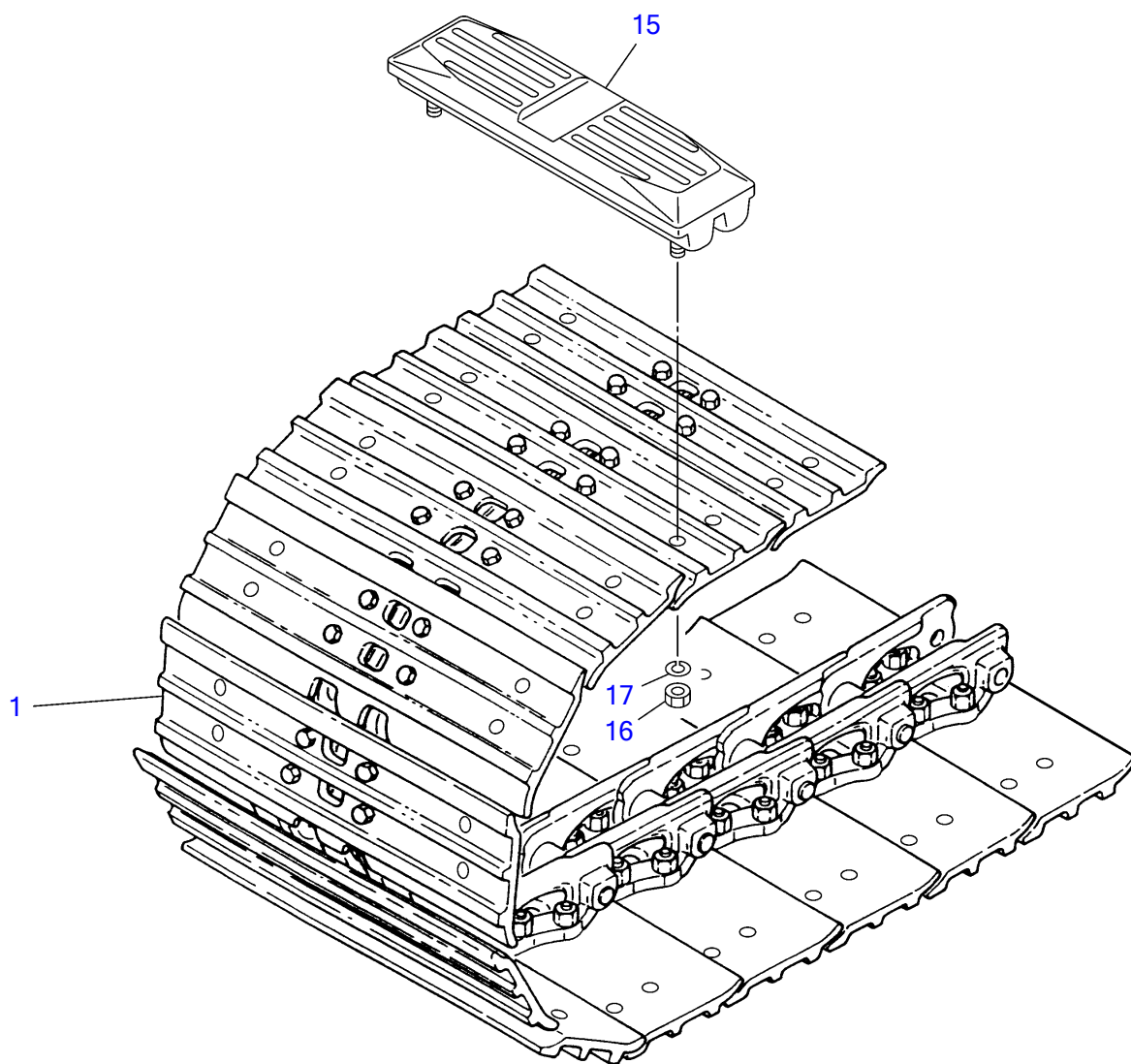


L5A020

S=1/18

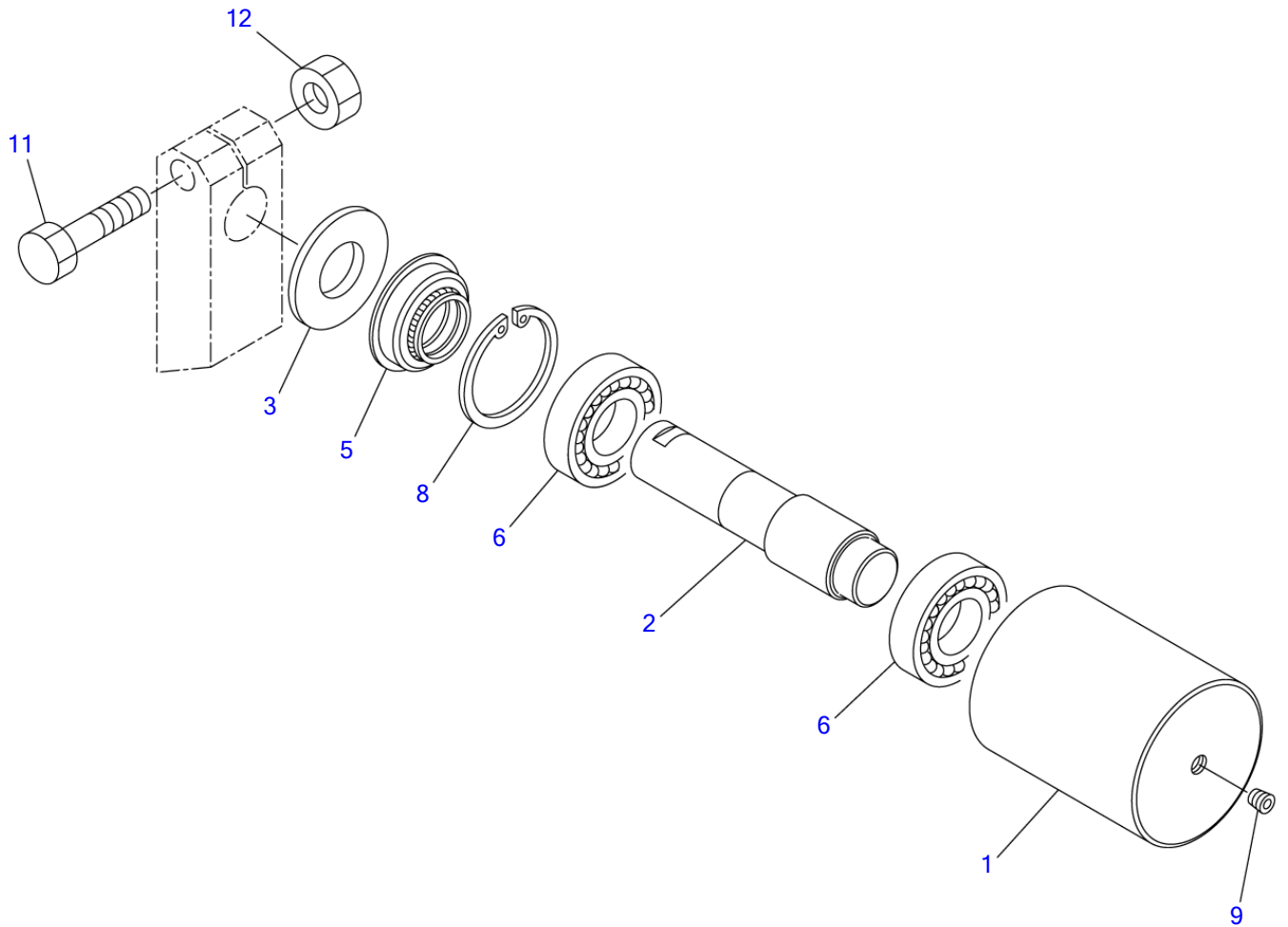
CRAWLER BELT

Item	Part number	Description	Q'ty	Chan.	Serial No.	Serv.	Remarks
0	1914087300	BELT, steel crawler	2				
0-1	1914087199	• LINK ASSY	2				
1	1914087001	• • LINK (R.H.)	38				
2	1914087002	• • LINK (L.H.)	38				
3	1914087003	• • LINK, master (R.H.)	1				
4	1914087004	• • LINK, master (L.H.)	1				
5	1914087005	• • BUSHING	38				
6	1914087006	• • PIN, track	38				
7	1914087012	• • BUSHING	1				
8	1914087007	• • PIN, master	1				
9	1914087013	• • COLLAR	2				
10	1914087014	• • PIN, split	1				
11	1914087015	• • SEAL	76				
12	1914087009	• BOLT	156				
13	1914087010	• NUT	156				
14	1914087311	• PLATE	39				
15	1914086410	BELT, rubber crawler	2				
	L8a011						



L4A082

CRAWLER BELT (with rubber pads)						
Item	Part number	Description	Q'ty	Chan.	Serial No.	Serv. Remarks
0	1914087400	BELT ASSY, steel crawler (with rubber pads)	2			
1	1914087300	▪ BELT, steel crawler	1			
15	1914400600	▪ PAD, rubber	39			
16	1130050014	▪ ▪ NUT	4			
17	1140010014	▪ ▪ WASHER, spring	4			
	L4a083					



L3A030

S=1/4

Thanks for your reading.

Please [click here](#) to download complete manual instantly.

And can also choose other manuals.

Feel free --->write to me with any questions.

Our service email:

manuals007@hotmail.com