



R60-20 R60-22 R60-25 R60-30
R60-35 R60-40 R60-45 R60-50

Elektro Gabelstapler
Electric Fork Truck
Chariot élévateur électrique
Carretilla elevadora electrica

STILL
ELECTRONIC
DOCUMENTATION
SYSTEM

STEDS



**Werk-
statt-
handbuch**

R6022 - R6029
R6042 - R6049
R6036I - R6039I

Ident-Nr.164518 (en)

**Work-
shop
manual**

**Manuel
d'Atelier**

**Manual
de taller**



STILLGmbH

Information relating to workshop manual

The workshop manual is valid for all of the listed trucks.

This workshop manual has been prepared for the truck types 6022 - 6029.

For newer truck types, supplements will be provided in case of deviations. The supplements will include valid truck types.

designation	design	truck typ							
		DC current				AC current			
R60-20	Swing axle	6022							
R60-22	Swing axle		6042			6036			
R60-25	Swing axle, short	6023	6043			6037			
	Swing axle	6024	6044			6038			
R60-30	Swing axle	6025	6045			6039			
R60-35	Swing axle	6026	6046						
R60-40	Swing axle	6027	6047						
R60-45	Swing axle	6028	6048						
R60-50	Swing axle	6029	6049						

Frame and Counterweight

Frame

The welded steel frame is of unit construction and has a bolt-on cast iron counterweight.

The hydraulic oil tank serves as a frame crossmember located underneath the floor plate.

Counterweight

The removable rear counterweight is secured to the Sframe by four bolts (see sketch).

1 = hex hd bolt M 24 x 85 / 8.8

2 = spherical washer

3 = ball cup

4 = hex hd bolt M 24 x 70 / 8.8

5 = locking washer

The four counterweight bolts (1 & 4) should be torqued to 660 Nm.

Weight of the counterweights :

6022 → 650 kgs

6023 (short) → 1078 kgs

6024 (long) → 738 kgs

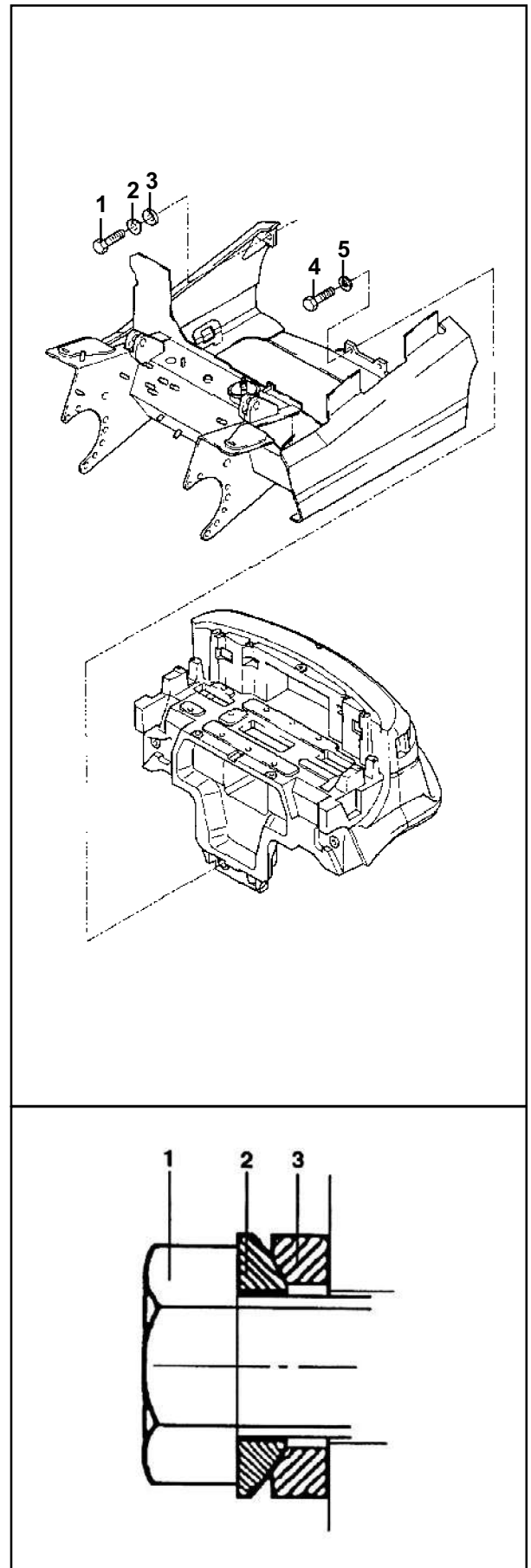
6025 → 1143 kgs

6026 → 1454 kgs

6027 → 1401 kgs

6028 → 1687 kgs

6029 ----> 1965 kgs



Thanks for your reading.

Please click here to download complete manual instantly.

And can also choose other manuals.

Feel free --->write to me with any questions.

Our service email:

manuals007@hotmail.com