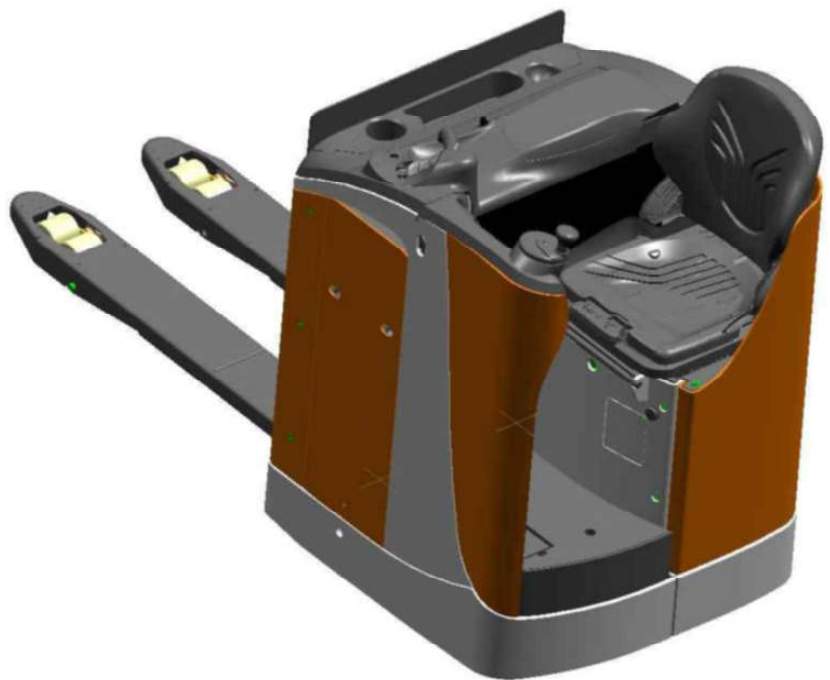


## Workshop literature

**STILL**  
**ELECTRONIC**  
**DOCUMENTATION**  
**SYSTEM**



FU-X20

Ident no. 45478042105 - 04/2007 - EN



## 00 General Information

<b>Product information</b> .....	00-1
<b>Instruction and maintenance manual</b> .....	00-1
<b>General Forklift Description</b> .....	00-1
<b>Definition of Direction of Travel</b> .....	00-2
<b>Technical specifications</b> .....	00-3
<b>Battery dimensions and weights</b> .....	00-5
<b>Transporting the truck</b> .....	00-5
<b>Forklift Loading and Unloading</b> .....	00-6
<b>Safety regulations</b> .....	00-7
<b>Description of safety symbols</b> .....	00-7
<b>Operations Preliminary to Maintenance</b> .....	00-7
<b>To avoid accidents</b> .....	00-7
<b>General Safety Rules</b> .....	00-7
<b>Safety Regulations Relative to Operating Materials</b> .....	00-9

## 01 Service

<b>Maintenance</b> .....	01-1
<b>General</b> .....	01-1
<b>Synoptic Table of Maintenance Operations</b> .....	01-1
<b>Supply Table</b> .....	01-1
<b>Safety screws tightening torque table</b> .....	01-2

## 02 Diagnostics

<b>Connectors for diagnostics</b> .....	02-1
<b>Connectors for diagnostics</b> .....	02-1
<b>Curtis system diagnostics</b> .....	02-2
<b>Software for Curtis plant diagnostics</b> .....	02-2
<b>Device Monitor (Monitor Menu)</b> .....	02-7
<b>"Device parameters" (Parameters menu)</b> .....	02-11
<b>System fault monitor (Alarms)</b> .....	02-16
<b>Alarms list</b> .....	02-16
<b>"LES" electrical drive diagnostics</b> .....	02-21
<b>Diagnostics by means of PC</b> .....	02-21
<b>Alarms</b> .....	02-23
<b>Parameter values</b> .....	02-26

<b>11</b>	<b>motor</b>	
	Drive motor	11-1
	Removing the drive motor	11-1
	Reassembly of the drive motor	11-2
<b>22</b>	<b>Reducer</b>	
	Disassembly/reassembly of the reducer	22-1
	Disassembly of the anchorage plate and drive reducer gearbox	22-1
	Reassembly of the reducer gearbox	22-3
	Reducer maintenance	22-7
	Description of the reducer	22-7
	Instructions for assembly/ service on the reducer	22-7
	Adjustment of the bevel gear system	22-8
	Reducer section	22-11
<b>31</b>	<b>Truck</b>	
	Bonnets	31-1
	Internal accessibility	31-1
<b>34</b>	<b>Driver's compartment</b>	
	Sit	34-1
	Removal and reassembly of the seat and seat support	34-1
	Step plate	34-3
	Platform removal procedure	34-3
	Platform gas spring removal	34-4
	Platform gas spring disassembly	34-6
	Platform gas spring refitting	34-6
	Mobile platform structure removal	34-7
<b>42</b>	<b>Steering</b>	
	Electrical steering	42-1
	Electric steering system	42-1
	Electrical steering system calibration	42-2
	Potentiometer Teach-in[teach-in]	42-5
	Reassembly of the drive wheel position potentiometer	42-9

## 46 Wheels

<b>Wheels</b> .....	<b>46-1</b>
Access to the drive wheel retaining nuts .....	46-1
Wheel Tightening Check .....	46-1
Wheel Wear Check .....	46-1
Disassembly and reassembly of the traction wheel .....	46-2

## 49 Braking

<b>Braking devices and methods</b> .....	<b>49-1</b>
Removal of the electromagnetic brake; .....	49-1
<b>Service braking (eABS)</b> .....	<b>49-4</b>
Description of service braking (e-ABS) .....	49-4
Features of the eABS module .....	49-5
Alarms encoding .....	49-6
List of alarms .....	49-6

## 60 Electrical and electronic system

<b>Electrical/electronic system: general</b> .....	<b>60-1</b>
Functional diagram of the "Curtis" electronic control system .....	60-1
Main features of the Curtis system .....	60-2
Inputs and outputs of the "Curtis system" .....	60-3
Removal of the electric panel .....	60-4
<b>Wiring</b> .....	<b>60-7</b>
Replacing Fuses .....	60-7
Power fuse installation .....	60-8
<b>Batteries</b> .....	<b>60-9</b>
Low battery charge indicator and counter .....	60-9
Battery replacement .....	60-10
Stand with lateral battery extraction roller unit (optional) .....	60-11
Electrolyte Level and Density Check .....	60-11
Battery Recharging .....	60-12

## 80 Lifting

<b>Mobile structure</b> .....	<b>80-1</b>
Disassembly of the mobile structure .....	80-1
Disassembly and reassembly of the lift cylinders .....	80-4
Adjustment of the guide bearings for the mobile structure .....	80-7
Replacement of the lift cylinder gaskets .....	80-9

Maintenance of the mobile structure lever systems .....	80-11
Strut length adjustment .....	80-14

## Annex

### A Diagrams

Wiring diagrams .....	A-1
Electrical connection diagram - sheet 1/4 .....	A-1
Electrical connection diagram - sheet 2/4 .....	A-3
Electrical connection diagram - sheet 3/4 .....	A-5
Electrical connection diagram - sheet 4/4 .....	A-7
Transformation kit for cold-storage (optional) - Fleet Manager (optional) - Numerical keypad (optional) .....	A-8
Hydraulics diagrams .....	A-10
Hydraulic functional diagram .....	A-10

**Thanks for your reading.**

**Please click here to download complete manual instantly.**

**And can also choose other manuals.**

**Feel free --->write to me with any questions.**

**Our service email:**

**manuals007@hotmail.com**