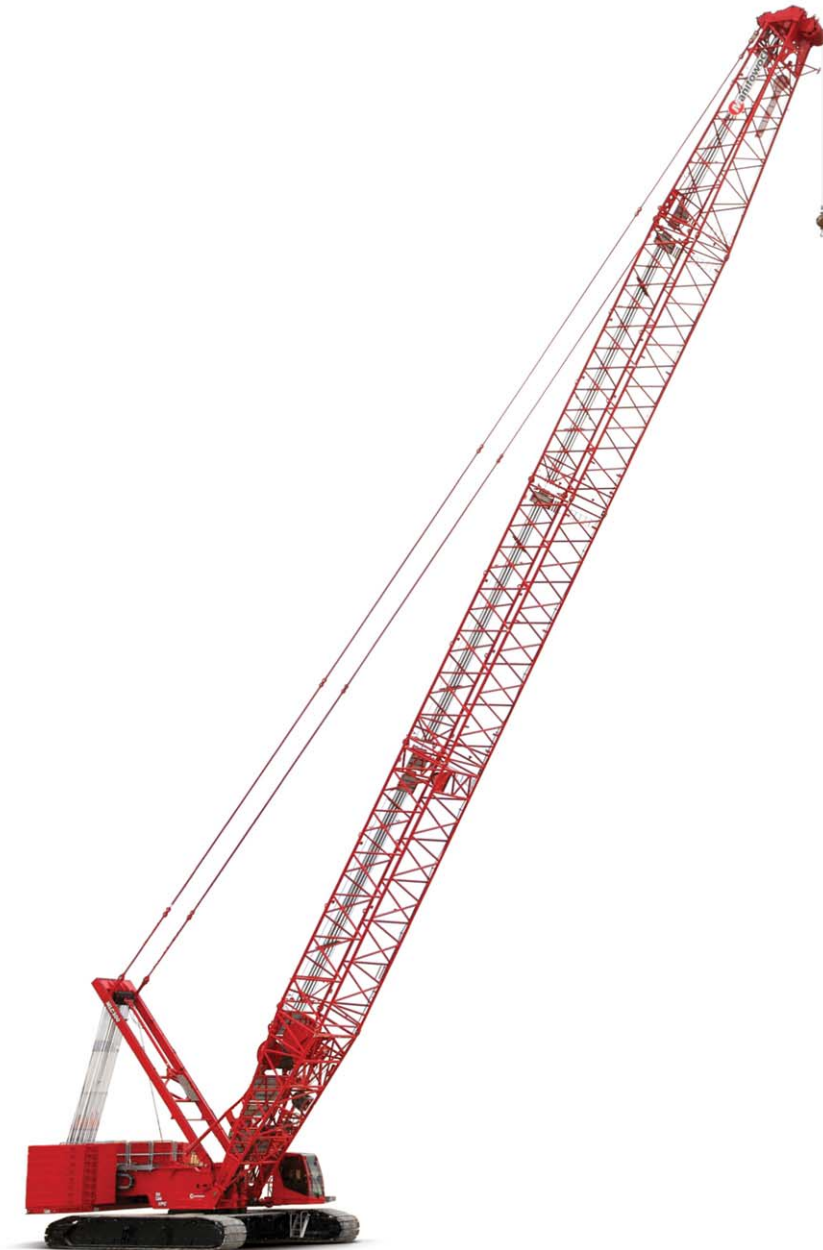


Manitowoc MLC300

with Fixed Position Counterweight

Service/Maintenance Manual





SERVICE/MAINTENANCE MANUAL

This manual has been prepared for and is considered part of -

MLC300

Crane Model Number

XXXXXRef

Crane Serial Number

This manual is divided into the following sections:


SECTION 1	INTRODUCTION
SECTION 2	HYDRAULIC SYSTEM
SECTION 3	ELECTRICAL SYSTEM
SECTION 4	BOOM
SECTION 5	HOISTS
SECTION 6	SWING SYSTEM
SECTION 7	POWER TRAIN
SECTION 8	UNDERCARRIAGE
SECTION 9	LUBRICATION
SECTION 10	ACCESSORIES

NOTICE

The serial number of the crane and applicable attachments (luffing jib, VPC-MAX™) is the only method your Manitowoc dealer or the Manitowoc Crane Care Lattice Team has of providing you with correct parts and service information.

The serial number is located on a crane identification plate attached to the operator's cab and each attachment. Refer to the Nameplate and Decal Assembly Drawing in Section 2 of this manual for the exact location of the crane identification plate.

Always furnish serial number of crane and its attachments when ordering parts or discussing service problems with your Manitowoc dealer or the Manitowoc Crane Care Lattice Team.

	⚠ WARNING
	<p>To prevent death or serious injury:</p> <ul style="list-style-type: none">• Avoid unsafe operation and maintenance. Crane and attachments must be operated and maintained by trained and experienced personnel. Manitowoc is not responsible for qualifying these personnel.• Do not operate or work on crane or attachments without first reading and understanding instructions contained in Operator Information Manual and Service Manual supplied with crane and applicable attachments.• Store Operator Information Manual and Service Manual in operator's cab. <p>If Operator Information Manual or Service Manual is missing from cab, contact your Manitowoc dealer for a new one.</p>

THE ORIGINAL LANGUAGE OF THIS PUBLICATION IS ENGLISH

See end of this manual for Alphabetical Index

SECTION 1	Introduction
Continuous Innovation	1-1
Safety Messages	1-1
Safety Alert Symbol	1-1
Signal Words	1-1
Safe Maintenance Practices	1-2
Read This Manual	1-2
Basic Crane Maintenance Safety	1-2
Protection of the Environment	1-4
Identification and Location of Major Components	1-4
Solenoid Valve Identification	1-8
SECTION 2	Hydraulic System
Hydraulic System Overview	2-1
Hydraulic Pump Locations	2-1
Motor Locations	2-8
Rotating Bed Hydraulic Valves	2-12
Carbody Hydraulic Valves	2-13
Drum Pawl and Brake Valve Locations	2-14
Hydraulic System Maintenance	2-17
Safety	2-17
Storing and Handling Oil	2-17
Storing and Handling Parts	2-17
Disposing of Hydraulic Oil and Parts	2-17
Inspecting the Hydraulic System	2-18
Inspecting and Replacing Hydraulic Hoses	2-19
Replacing the Desiccant Breather Cartridge	2-20
Replacing Hydraulic Filters	2-20
Servicing Suction Strainers	2-23
Changing Hydraulic Oil	2-24
Servicing Pumps	2-24
Replacing Pressure Transducers	2-27
Testing a Pressure Transducer	2-27
Replacing a Pressure Transducer	2-27
Shop Procedures	2-28
Initial Hydraulic Oil Fill	2-28
Initial Hydraulic System Startup	2-29
Hydraulic Tests and Calibrations	2-30
Pressure Sender Calibration	2-30
Controls Calibration	2-30
Charge Pressure Test	2-30
High Pressure Test	2-30
Travel Speed Test	2-30
Swing Speed Test	2-30
Drum Speed Test	2-30
Disc Brake Operational Test	2-32
Free Fall Brake Operational Test	2-33
Accumulator Maintenance	2-34
SECTION 3	Electrical System
Electrical Drawings and Schematics	3-1
Electrical Power Sequence	3-1
Battery Power	3-1
Battery Power Disconnect	3-1
Crane Electrical Power Distribution	3-2

Crane Electrical System Ground Points 3-3
 Circuit Breakers, Fuses, and Relays 3-5
 Inspect Electrical Components 3-8
 Every Month or 200 Hours 3-8
 Degradation Due to Severe Environment 3-8
 CAN Bus Control System 3-9
 CAN Bus System Overview 3-9
 CAN Bus System Chart 3-10
 Control Modules 3-11
 Control Module Devices 3-16
 Control Module Test Voltages 3-19

SECTION 4 Boom

General Maintenance 4-1
 Boom and Luffing Jib Angle Indicator Calibration 4-1
 Boom Stop Limit Switch 4-1
 Automatic Boom Stop Overview 4-1
 Maintenance 4-2
 Adjusting the Automatic Boom Stop 4-3
 Replacing the Boom Stop Limit Switch Actuator Rod 4-3
 Automatic Luffing Jib Stop Adjustment and Maintenance 4-3
 Boom Electrical Schematic 4-5
 Luffing Jib Electrical Schematic 4-6
 Strap Inspection and Maintenance 4-7
 Inspection 4-7
 Identifying the Straps 4-7
 Replacement Specifications 4-8
 Storing the Straps 4-10
 Removing the Straps from Service 4-11
 Inspection Checklist 4-11
 Lattice Section Inspection and Lacing Replacement 4-14

SECTION 5 Hoists

General 5-1
 Drum Identification 5-1
 Drum 1—Main Hoist 5-2
 Drum 1 Overview 5-2
 Drum 1 Brake Overview 5-2
 Drum 1 Brake Operation 5-2
 Drum 1/3 Diverting 5-2
 Drum 1 Hoisting Operation 5-3
 Neutral 5-3
 Drum 1 Lowering Operation 5-3
 Drum 1 Loop Flushing 5-3
 Drum 1 Hydraulic Schematic—Hoisting 5-4
 Drum 1 Electrical Schematic 5-5
 Drum 2—Auxiliary Front Hoist 5-6
 Drum 2 Overview 5-6
 Drum 2 Brake Overview 5-6
 Drum 2 Brake Operation 5-6
 Drum 2 Hoisting Operation 5-7
 Neutral 5-7
 Drum 2 Lowering Operation 5-7
 Drum 2 Loop Flushing 5-7
 Drum 2 Hydraulic Schematic—Hoisting 5-8
 Drum 2 Electrical Schematic 5-9

Drum 3—Auxiliary Rear Hoist 5-10

 Drum 3 Overview 5-10

 Drum 3 Brake Overview 5-10

 Drum 3 Brake Operation 5-10

 Drum 1/3 Diverting 5-10

 Drum 3 Hoisting Operation 5-11

 Neutral 5-11

 Drum 3 Lowering Operation 5-11

 Drum 3 Loop Flushing 5-11

 Drum 3 Hydraulic Schematic—Hoisting 5-12

 Drum 3 Electrical Schematic 5-13

Drum 4—Boom Hoist 5-14

 Drum 4 Overview 5-14

 Drum 4 Brake Overview 5-14

 Drum 4 Brake Operation 5-14

 Drum 4 Pawl Control 5-15

 Drum 4 Hoisting Operation 5-15

 Neutral 5-16

 Drum 4 Lowering Operation 5-16

 Brake Defeat Valve 5-17

 High Pressure Protection 5-17

 Drum 4 Cavitation Protection 5-17

 Drum 4 Motor Case Protection 5-17

 Drum 4 Hydraulic Schematic—Hoisting 5-18

 Drum 4 Hydraulic Schematic—Lowering 5-19

 Drum 4 Electrical Schematic 5-20

Drum 6—Auxiliary Hoist 5-21

 Drum 6 Overview 5-21

 Drum 6 Brake Overview 5-21

 Drum 6 Brake Operation 5-21

 Drum 6 Pawl Control 5-22

 Drum 6 Hoisting Operation 5-22

 Neutral 5-23

 Drum 6 Lowering Operation 5-23

 Brake Defeat Valve 5-23

 High Pressure Protection 5-23

 Drum 6 Cavitation Protection 5-23

 Drum 6 Motor Case Protection 5-23

 Drum 6 Hydraulic Schematic—Hoisting 5-24

 Drum 6 Hydraulic Schematic—Lowering 5-25

 Drum 6 Electrical Schematic 5-26

Drum Gearbox Oil Change 5-27

 Gear Oil Specifications 5-27

 Oil Analysis 5-27

 Periodic Maintenance 5-27

 Quick-Drain Valve 5-27

 Oil Change Procedure 5-28

Drum 4 Pawl 5-30

 Operation 5-30

 Maintenance 5-30

 Spring Adjustment 5-30

 Limit Switch Adjustment 5-30

Drum 6 Pawl 5-32

 Operation 5-32

 Maintenance 5-32

 Spring Adjustment 5-32

 Limit Switch Adjustment 5-32

Drum 1 Minimum Bail Limit	5-34
Pre-Adjustment.	5-34
Spring Adjustment	5-34
Limit Switch Adjustment	5-34
Drum 2/3 Minimum Bail Limit (non-free Fall Drum)	5-36
Pre-Adjustment.	5-36
Limit Switch Adjustment	5-36
Drum 2/3 Minimum Bail Limit (Free Fall Drum)	5-37
Pre-Adjustment.	5-37
Limit Switch Adjustment	5-37
Drum 6 Minimum Bail Limit	5-38
Pre-Adjustment.	5-38
Spring Adjustment	5-38
Limit Switch Adjustment	5-38
Speed Sensor—Hoist Motors	5-39
Replacement	5-39
Block Level	5-40
Proximity Sensor Operation	5-40
Proximity Sensor Replacement and Adjustment	5-40
Weekly Maintenance	5-40
Block-Up Limit Installation and Adjustment	5-42
General.	5-42
Removing the Luffing Jib	5-42
Maintenance.	5-44
Adjustment	5-44
Wire Rope Inspection and Replacement.	5-46
Wire Rope Lubrication	5-46
Maintain a Wire Rope Condition Report	5-46
Required Inspection Intervals	5-46
Wire Rope Care and Replacement Guidelines.	5-46
Daily Inspection	5-47
Periodic Comprehensive Inspection.	5-48
Determining the Frequency of Inspection.	5-48
Replacement Criteria	5-48
Reduction in the Rope Diameter	5-48
Broken Rope Wires	5-49
Rope That Has Been Idle a Month or More	5-50
Distributing Wire Rope Wear	5-50
Sheave, Roller, and Drum Inspection	5-50
Load Block and Hook-and-Weight Ball Inspection	5-53
Daily Inspection	5-53
Yearly Inspection	5-55

SECTION 6 Swing System

General	6-1
Swing System Overview	6-1
Swing Brake Operation	6-1
Park Switch Control	6-1
Holding Brake Switch Control.	6-1
Swing Operation	6-2
Swing Pump Control.	6-2
Swing Left.	6-2
Cross Port Orifice	6-2
Swing Right	6-2
Coasting	6-2
Swing Alarm	6-2

Swing Left Hydraulic Schematic	6-3
Swing Right Hydraulic Schematic	6-4
Swing Electrical Schematic	6-5
Swing Brake Manual Release	6-6
Swing Gearbox Oil Change	6-7
Gear Oil Specifications	6-7
Oil Analysis	6-7
Periodic Maintenance	6-7
Quick-Drain Valve	6-7
Oil Change Procedure	6-8
Swing Motor Speed Sensor	6-9
Speed Sensor Replacement	6-9
Speed Sensor Adjustment	6-9
Weekly Periodic Maintenance	6-9

SECTION 7. Power Train

Batteries	7-1
Battery Safety	7-1
Battery Gases Are Explosive	7-1
Jump-Starting a Battery	7-1
Causes of Battery Failure	7-1
Overcharging	7-1
Undercharging	7-1
Lack of Water	7-1
Loose Hold-Downs	7-2
Overloads	7-2
Multiple Battery System	7-2
Battery Maintenance	7-2
Checking Battery State of Charge	7-2
Troubleshooting—Slow Cranking	7-3
Quarterly Battery System Maintenance	7-3
Battery Disconnect Switch	7-4
Battery Charger (optional)	7-4
Engine Controls	7-5
Engine Enclosure	7-6
Engine Component Identification	7-7
Engine Belt Routing	7-8
Cummins Engine	7-8
MTU Engine	7-8
Air Cleaner Maintenance	7-9
Daily Inspection	7-9
Monthly Inspection	7-9
Changing the Air Cleaner Filters	7-9
Replacing the Fuel Filter—MTU	7-11
Overview	7-11
Inspecting the Fuel Filter	7-11
Replacing the Fuel Filter	7-11
Replacing the Fuel Filter—Cummins QSG12 Engine	7-13
Overview	7-13
Replacing the Fuel Filter	7-13
Engine Radiator	7-14
Draining and Re-Filling the Cooling System	7-14
Changing the Pump Drive Oil	7-16
Gear Oil Specifications	7-16
Oil Analysis	7-16
Periodic Maintenance	7-16

Quick-Drain Valve 7-16

Changing the Oil 7-17

Engine Clutch Maintenance 7-18

 Monthly 7-18

 Adjustment 7-18

Adjusting the Engine Throttle 7-19

 Hand Throttle Control 7-19

 Foot Throttle Control 7-19

Engine Electrical Schematic 7-21

Exhaust Aftertreatment System 7-22

 Engine Regeneration and Inhibit 7-22

 Tier 4 Main Display Icons 7-22

 DEF Tank 7-22

 DEF Supply Module 7-23

 Coolant Control Valve 7-23

 DOC/DPF Module 7-23

 DEF Dosing Module 7-23

 SCR Module 7-23

 DRP 7-23

SECTION 8 UnderCarriage

General 8-1

Hydraulic Travel System 8-1

 Travel System Overview 8-1

 Travel Brake Operation 8-2

 Travel Speed Selection 8-2

 Forward Travel Operation 8-3

 Reverse Travel Operation 8-4

 No Travel 8-4

 Travel Hydraulic Schematic 8-5

 Travel Electrical Schematic 8-6

Travel Motor Case Flushing 8-7

 Travel Motor Case Flushing Hydraulic Schematic 8-8

Carbody Jacks 8-9

 Setup Remote Control 8-9

 Neutral 8-9

 Load Holding 8-9

 Lower (retract jack) 8-9

 Raise (extend jack) 8-9

 Carbody Jacks Hydraulic Schematic 8-10

 Carbody Jacks Electrical Schematic 8-11

Crawler Pins 8-12

 Setup Remote Control 8-12

 Neutral 8-12

 Disengage (retract pins) 8-12

 Engage (extend pins) 8-12

 Crawler Pins, Auto Lube, and Track Tension Electrical Schematic 8-13

 Crawler Pins Hydraulic Schematic 8-14

Carbody Track Tension Cylinders 8-15

 Setup Remote Control 8-15

 Neutral 8-15

 Retract 8-15

 Extend 8-15

 Carbody Track Tension Hydraulic Schematic 8-16

Crawler Preventive Maintenance 8-17

Crawler Tread Slack Measurement 8-17

Thanks for your reading.

Please click here to download complete manual instantly.

And can also choose other manuals.

Feel free --->write to me with any questions.

Our service email:

manuals007@hotmail.com