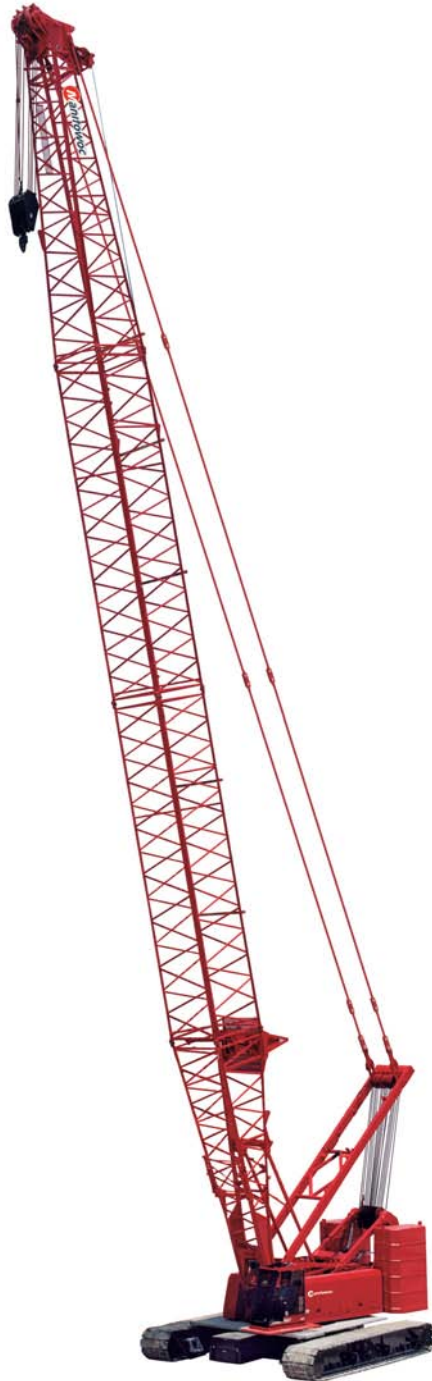


Manitowoc 999

Service/Maintenance Manual





SERVICE/MAINTENANCE MANUAL

This manual has been prepared for and is considered part of -

999

Crane Model Number

9991Ref

Crane Serial Number

This manual is divided into the following sections:

SECTION 1	INTRODUCTION
SECTION 2	HYDRAULIC SYSTEM
SECTION 3	ELECTRIC SYSTEM
SECTION 4	BOOM
SECTION 5	HOISTS
SECTION 6	SWING
SECTION 7	POWER TRAIN
SECTION 8	UNDER CARRIAGE
SECTION 9	LUBRICATION
SECTION 10	TROUBLESHOOTING

NOTICE

The serial number of the crane and applicable attachments (i.e. luffing jib, MAX-ER®) is the only method your Manitowoc dealer or the Manitowoc Crane Care Lattice Team has of providing you with correct parts and service information.

The serial number is located on a crane identification plate attached to the operator's cab and each attachment. Refer to the Nameplate and Decal Assembly Drawing in Section 2 of this manual for the exact location of the crane identification plate.

Always furnish serial number of crane and its attachments when ordering parts or discussing service problems with your Manitowoc dealer or the Manitowoc Crane Care Lattice Team.



WARNING

To prevent death or serious injury:

- Avoid unsafe operation and maintenance.
Crane and attachments must be operated and maintained by trained and experienced personnel. Manitowoc is not responsible for qualifying these personnel.
- Do not operate or work on crane or attachments without first reading and understanding instructions contained in Operator Information Manual and Service Manual supplied with crane and applicable attachments.
- Store Operator Information Manual and Service Manual in operator's cab.
If Operator Information Manual or Service Manual is missing from cab, contact your Manitowoc dealer for a new one.

THE ORIGINAL LANGUAGE OF THIS PUBLICATION IS ENGLISH

See end of this manual for Alphabetical Index

SECTION 1	Introduction
Continuous Innovation	1-1
Safety Messages	1-1
General	1-1
Safety Alert Symbol	1-1
Signal Words	1-1
Safe Maintenance Practices	1-2
Maintenance Instructions	1-2
Safe Maintenance Practices	1-2
Environmental Protection	1-3
General Operation	1-4
Operating System	1-4
Hydraulic Components	1-4
Main Pressure Monitoring	1-6
Accessory System Pressure	1-6
Basic Operation	1-6
Engine Controls	1-8
EPIC® Programmable Controller	1-9
Standard Mode	1-10
Other Crane Modes	1-10
Electrical Power to Operator's Cab	1-11
Pressure Senders and Encoders	1-12
System Faults	1-13
Operating Faults and Limit Switches	1-14
Brake and Drum Pawl Application/Release	1-14
Swing System Operation	1-16
Swing Brake and Swing Lock	1-16
Swing Right or Left	1-16
Swing Lock Schematic – Past Production	1-16
Swing Lock Schematic – Current Production	1-17
Swing Holding Brake Switch	1-17
Travel System Operation	1-19
Travel Brakes	1-19
Travel Forward and Reverse	1-19
Travel Speed-High/Low Operation	1-19
Travel Detent Selector	1-20
Boom Hoist System Operation	1-22
Boom Hoist Brake and Pawl Switch	1-22
Boom Hoist Raise	1-23
Boom Stop Cylinders	1-24
Boom Hoist Lower	1-24
Front/Rear Drum System - Full Power	1-27
Load Drum Brake and Pawl Switch	1-28
Load Drum Hoisting	1-28
Load Drum Lowering	1-29
Luffing Jib Operation (Optional)	1-31
Front/Rear Drum Free fall Mode (Optional)	1-32
Load Drum Brake and Pawl Switch	1-32
Free Fall Brake/Clutch Operation	1-32
Free Fall - Drum Hoisting	1-32
Free Fall - Drum Lowering	1-34
Auxiliary Drum System Operation (Optional)	1-38
Auxiliary Drum Brake and Pawl Switch	1-39
Auxiliary Drum Raise	1-39
Auxiliary Drum Lower	1-40
Crane Setup Systems	1-43

Gantry System	1-44
Mast System	1-51
Boom Hinge Pins	1-57
Carbody Jacking System	1-59
Left and Right Crawler Pin Pusher Cylinders	1-62
Counterweight Pins	1-64
Appendix A — Hydraulic Solenoid Valve Identification	1-66
Appendix B — General Abbreviations	1-66

SECTION 2 **Hydraulic System**

Hydraulic Schematics	2-1
Hydraulic System – General	2-1
Checking and Replacing Hydraulic Hoses	2-1
Hydraulic System - Maintenance	2-2
Safety	2-2
Storing And Handling Oil	2-2
Storing And Handling Parts	2-2
Inspecting System	2-2
Hydraulic Components — Past production and Tier 3	2-4
Hydraulic Components — Tier 4	2-6
Replacing Filter Elements	2-8
Changing Oil	2-9
Tightening Hydraulic Connections	2-9
Hydraulic System Calibration Procedures	2-14
Accessing Calibration Screens	2-14
Calibration Procedures	2-14
Pressure Sender Replacement	2-20
Disc Brake Operational Test	2-22
Operational Test	2-22
Shop Procedure	2-22
Initial Oil Fill	2-25
Initial Engine Start-Up	2-29
Accessory System Checks and Adjustments	2-29
Travel Handle and Speed Check	2-31
Operating Drum Speed Checks	2-31

SECTION 3 **Electric System**

Electrical Schematics	3-1
Checking and Replacing Electrical Components	3-1
Circuit breaker and fuse ID	3-2
General	3-2
Test Voltages	3-9
General	3-9
Controller Board Layout	3-9
Pin Identification	3-10
Wire Identification	3-14
Description Identification	3-18
Controller Board Identification	3-22
Master Node Pin Identification	3-27
Display Readings	3-29
Operating Conditions	3-29
Operating Limits	3-29
System Faults	3-29
Selecting Display Language	3-29
Crane Diagnostics	3-35
Drum 1 and 2 (Front and Rear Drum)	3-35

Drum 4 (Boom Hoist) 3-35
 Drum 8 (Auxiliary) 3-35
 FFall 3-35
 Swing (Crane) 3-36
 Swing Speed/Torque 3-36
 Drum Slip 3-36
 Track 3-36
 RIN 3-36
 Accessory System 3-37
 Engine Throttle 3-37
 A1 (Handles) 3-37
 D1, D2, and D3 (Digital Outputs and Inputs) 3-38
 EPROM Replacement 3-43
 Dielectric Grease 3-45

SECTION 4. Boom

Automatic Boom Stop Adjustment 4-1
 Maximum Boom Angle 4-1
 Operation 4-1
 Maintenance 4-1
 Bypass Limit Test 4-2
 Adjustment 4-5
 Actuator Rod Replacement 4-5
 Physical Boom Stop 4-7
 Operation 4-7
 Boom And Luffing Jib Angle Indicator Calibration 4-8
 Mast and Gantry Sensor Adjustments 4-8
 Mast Angle Indicator 4-8
 Gantry Limit Switch 4-10
 Strap Inspection and Maintenance 4-11
 Inspection 4-11
 Identifying Straps 4-11
 Replacement Specifications 4-12
 Storing Straps 4-14
 Removing Straps from Service 4-14
 Inspection Checklist 4-14
 Lattice Section Inspection and Lacing Replacement 4-14

SECTION 5. Hoists

Hoist Drawings 5-1
 Free Fall Clutch/Brake Inspection and Overhaul 5-1
 Inspection 5-1
 Overhaul 5-2
 Minimum Bail Limit/Pressure Roller Adjustments 5-3
 Weekly Maintenance 5-3
 Wire Rope Removal 5-3
 Electrical Wiring 5-3
 Adjustment (Front or Rear Drum) 5-3
 Drum Pressure Roller - Adjustment 5-3
 Adjustment (Auxiliary Drum) 5-5
 Block-up Limit Installation and Adjustment 5-6
 Operation 5-6
 Installation 5-7
 Storing Electric Cable 5-7
 Disconnecting Block-Up Limit Controls 5-8
 Removing Jib or Boom Point 5-8

Maintenance	5-9
Adjustment	5-11
Wire Rope Lubrication	5-12
Wire Rope Inspection and Replacement	5-12
Keeping Records	5-12
Inspecting Wire Rope In Use	5-12
Inspecting Rope Not In Regular Use	5-12
Replacing Wire Rope	5-12
Distributing Wire Rope Wear	5-14
Sheave, Roller, And Drum Inspection	5-15
Load Block And Hook-and-Weight Ball Inspection	5-19
SECTION 6	Swing
Manual Release of Swing Brake and Lock	6-1
General	6-1
Manual Release Procedure	6-1
SECTION 7	Power Train
Battery Maintenance	7-1
Safety Information	7-1
Causes Of Battery Failure	7-1
Multiple Battery System	7-2
Maintenance	7-2
Charging	7-3
Storage	7-3
Battery Disconnect Switch	7-3
Engine Air Cleaner Maintenance — Past Production and Tier 3	7-4
Mounting	7-4
Inspection	7-4
Service	7-4
Engine Air Cleaner Maintenance — Tier 4	7-6
Mounting	7-6
Inspection	7-6
Service	7-7
Engine Clutch Adjustment — Tier 3 and Past Production	7-8
Operation	7-8
Adjustment	7-8
Engine Clutch Adjustment — Tier 4 Production	7-9
Operation	7-9
Adjustment	7-9
Engine Throttle Adjustment	7-10
Foot Throttle Linkage Adjustment	7-10
Engine Speed Calibration	7-10
Wiring Diagram	7-10
Engine Enclosure — Tier 4 Production	7-11
Engine Belt Routing	7-11
Engine Driven Fan — Past Production and Tier 3	7-11
Hydraulic Driven Fan — Tier 4 Production	7-11
Engine Cooling System Fill — Tier 4	7-12
Diesel Particulate Filter Regeneration – Tier 4 ONLY	7-13
General	7-13
Regeneration	7-13
Cleaning the Diesel Particulate Filter	7-13
Removing the DPF for Cleaning or Replacement	7-14
Installing the DPF	7-15
Side Inlet Re-orientation	7-18

SECTION 8	Under Carriage
Turntable Bearing Bolt Torque	8-1
Bearing Installation	8-1
Torque Requirements	8-1
Crawler Adjustment	8-2
Maintenance	8-2
Tread Slack Adjustment	8-2
Hydraulic Hand Pump	8-4
Assembly	8-4
Maintenance	8-4
Air Removal	8-4
Operation	8-4
SECTION 9	Lubrication
Lubrication	9-1
Lube and Coolant Product Guide	9-1
SECTION 10	Troubleshooting
Introduction	10-1
Safety Summary	10-1
General Guidelines	10-2
Test Equipment	10-2
Troubleshooting Charts	10-3
Testing	10-32
Test 1 – Battery Test (12 and 24 volts DC)	10-32
Test 2– Checking Resistance at Engine Temperature Sender	10-33
Test 3 – Checking Resistance at Engine Oil Pressure Sender	10-34
Test 4 – Cleaning and Adjusting the Engine RPM Transducer	10-35
Test 5 –Test Adapters-Checking Electrical Inputs/Outputs	10-36
Test 5 – Continued	10-37
Test 6 – Testing for Voltage at the Fuse Box	10-38
Test 7 – Checking Voltage at the Control Handle	10-39
Test 8 – Adjusting the Control Handle Potentiometer	10-40
Test 9 – Checking Voltage at the Pressure Senders	10-41
Test 10 – Checking Voltage at the Speed Encoders	10-42
Test 11 – Checking Voltage at the Hydraulic Brake Valve	10-43
Test 12 – Checking Voltage at the Hydraulic Valve Assemblies	10-44
Test 13 – Testing the Pump EDC and Motor PCP	10-45
Test 14 – Location of Pump Ports	10-46
Test 15 – Location of Motor Ports	10-47
Test 16 – Manually Stroking the Pump	10-48
Test 17 – Checking Pump Charge Pressure	10-49
Test 18 – Adjusting Pump Charge Pressure Relief	10-50
Test 19 – Setting the Pump Pressure	10-51
Test 20 – Setting Pump Neutral	10-52
Test 21 – Testing for Pump and Motor Leakage	10-53
Test 22 – Checking Hydraulic Brake Pressure	10-54
Test 23 – Servicing the Motor Loop Flushing (Purge) Valves	10-55
Test 24 – Actuating the Solenoid Valve Manual Overrides	10-56
Test 25 – Adjusting Accessory Pressure Switch	10-57
Test 26 – Adjusting the Counterbalance Valves	10-58

THIS PAGE INTENTIONALLY LEFT BLANK

Reference Only

SECTION 1 INTRODUCTION

TABLE OF CONTENTS

Continuous Innovation	1-1
Safety Messages	1-1
General	1-1
Safety Alert Symbol	1-1
Signal Words	1-1
Safe Maintenance Practices	1-2
Maintenance Instructions	1-2
Safe Maintenance Practices	1-2
Environmental Protection	1-3
General Operation	1-4
Operating System	1-4
Hydraulic Components	1-4
Hydraulic Tank	1-4
Shut-off Valve	1-5
Supercharge Filter Manifold	1-5
Return Manifolds	1-5
Cooler	1-5
Hydraulic Pumps	1-5
Charge Pressure	1-6
Hydraulic Motors	1-6
Main Pressure Monitoring	1-6
Accessory System Pressure	1-6
Basic Operation	1-6
Engine Controls	1-8
EPIC® Programmable Controller	1-9
Standard Mode	1-10
Other Crane Modes	1-10
Electrical Power to Operator's Cab	1-11
Pressure Senders and Encoders	1-12
System Faults	1-13
Operating Faults and Limit Switches	1-14
Brake and Drum Pawl Application/Release	1-14
Swing System Operation	1-16
Swing Brake and Swing Lock	1-16
Swing Right or Left	1-16
Swing Lock Schematic – Past Production	1-16
Swing Lock Schematic – Current Production	1-17
Swing Holding Brake Switch	1-17
Travel System Operation	1-19
Travel Brakes	1-19
Travel Forward and Reverse	1-19
Travel Speed-High/Low Operation	1-19
Travel Detent Selector	1-20
Boom Hoist System Operation	1-22
Boom Hoist Brake and Pawl Switch	1-22
Boom Hoist Raise	1-23
Boom Stop Cylinders	1-24
Boom Hoist Lower	1-24
Front/Rear Drum System - Full Power	1-27
Load Drum Brake and Pawl Switch	1-28
Load Drum Hoisting	1-28

Load Drum Lowering	1-29
Luffing Jib Operation (Optional)	1-31
Front/Rear Drum Free fall Mode (Optional)	1-32
Load Drum Brake and Pawl Switch	1-32
Free Fall Brake/Clutch Operation	1-32
Free Fall - Drum Hoisting	1-32
Free Fall - Drum Lowering	1-34
Auxiliary Drum System Operation (Optional)	1-38
Auxiliary Drum Brake and Pawl Switch	1-39
Auxiliary Drum Raise	1-39
Auxiliary Drum Lower	1-40
Crane Setup Systems	1-43
Gantry System	1-44
Gantry Cylinders Raise	1-44
Gantry Cylinders Lower	1-47
Mast System	1-51
Mast Cylinders Raise	1-52
Mast Cylinders Lower	1-54
Boom Hinge Pins	1-57
Carbody Jacking System	1-59
Carbody Jacking Cylinder Raise	1-60
Carbody Jacking Cylinder Lower	1-60
Left and Right Crawler Pin Pusher Cylinders	1-62
Right Crawler Pin Pusher Cylinders Engage	1-62
Right Crawler Pin Pusher Cylinders Disengage	1-62
Counterweight Pins	1-64
Appendix A — Hydraulic Solenoid Valve Identification	1-66
Appendix B — General Abbreviations	1-66

Thanks for your reading.

Please click here to download complete manual instantly.

And can also choose other manuals.

Feel free --->write to me with any questions.

Our service email:

manuals007@hotmail.com