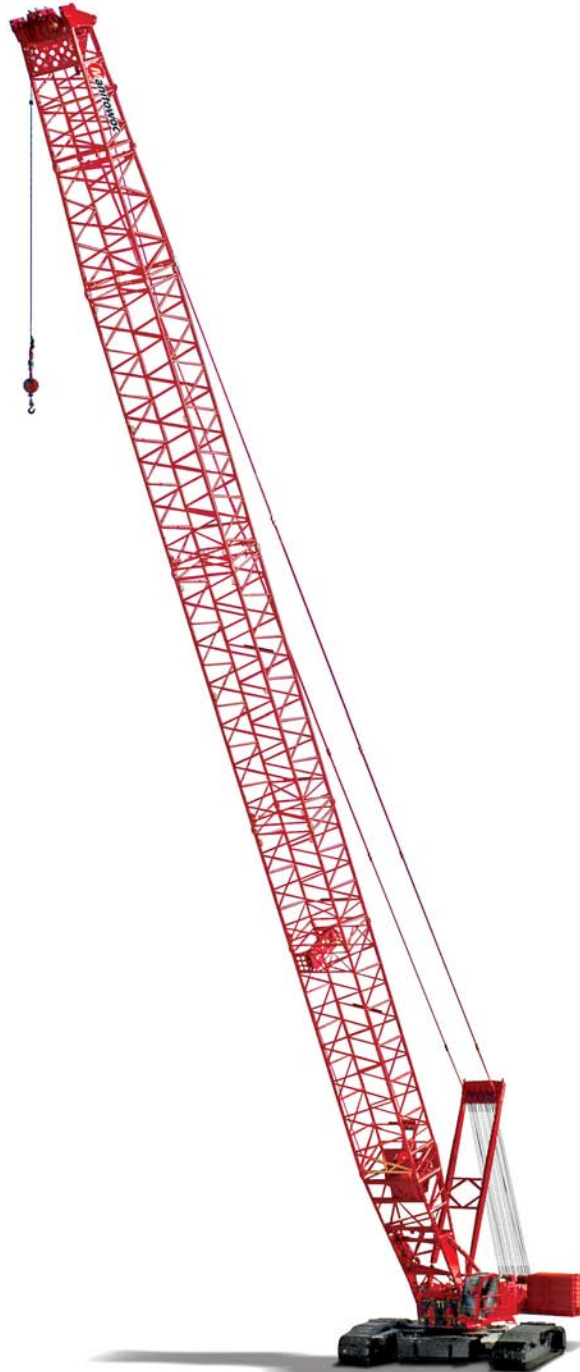


Manitowoc 16000

Service/Maintenance Manual





SERVICE/MAINTENANCE MANUAL

This manual has been prepared for and is considered part of -

16000

Crane Model Number

16001Ref

Crane Serial Number

This manual is divided into the following sections:

SECTION 1	INTRODUCTION
SECTION 2	HYDRAULIC SYSTEM
SECTION 3	ELECTRIC SYSTEM
SECTION 4	BOOM
SECTION 5	HOISTS
SECTION 6	SWING
SECTION 7	POWER TRAIN
SECTION 8	UNDER CARRIAGE
SECTION 9	LUBRICATION
SECTION 10	TROUBLESHOOTING

NOTICE

The serial number of the crane and applicable attachments (i.e. luffing jib, MAX-ER®) is the only method your Manitowoc dealer or the Manitowoc Crane Care Lattice Team has of providing you with correct parts and service information.

The serial number is located on a crane identification plate attached to the operator's cab and each attachment. Refer to the Nameplate and Decal Assembly Drawing in Section 2 of this manual for the exact location of the crane identification plate.

Always furnish serial number of crane and its attachments when ordering parts or discussing service problems with your Manitowoc dealer or the Manitowoc Crane Care Lattice Team.



WARNING

To prevent death or serious injury:

- Avoid unsafe operation and maintenance.
Crane and attachments must be operated and maintained by trained and experienced personnel. Manitowoc is not responsible for qualifying these personnel.
- Do not operate or work on crane or attachments without first reading and understanding instructions contained in Operator Information Manual and Service Manual supplied with crane and applicable attachments.
- Store Operator Information Manual and Service Manual in operator's cab.
If Operator Information Manual or Service Manual is missing from cab, contact your Manitowoc dealer for a new one.

THE ORIGINAL LANGUAGE OF THIS PUBLICATION IS ENGLISH

See end of this manual for Alphabetical Index

SECTION 1	Introduction
Continuous Innovation	1-1
Safety Messages	1-1
General	1-1
Safety Alert Symbol	1-1
Signal Words	1-1
Safe Maintenance Practices	1-2
Maintenance Instructions	1-2
Safe Maintenance Practices	1-2
Environmental Protection	1-3
Identification and Location of Components	1-4
General Views	1-6
Top	1-7
Right Side	1-8
Left Side	1-9
Left Side	1-10
Undercarriage/Crawler	1-11
Crane Description of Operation	1-12
General Abbreviations	1-12
Solenoid Valve Identification	1-12
General Operation	1-13
Hydraulic Components	1-14
Pressure Monitoring	1-15
Basic Operation	1-15
Accessory/MAX-ER Pump	1-17
Engine Controls	1-17
Electrical Control System	1-18
Display Screens	1-19
Electrical Power to Operator's Cab	1-19
Pressure Senders and Speed Sensors	1-21
System Faults	1-21
Brake and Drum Pawl Operation	1-21
Swing System Operation	1-23
Swing Brake and Swing Lock	1-23
Swing Right or Left	1-23
Swing Brake Pressure Sensor	1-24
Swing Holding Brake Switch	1-24
Travel System Operation	1-26
Travel Brakes	1-26
Travel Forward and Reverse	1-26
Two-Speed Travel Operation	1-28
Travel Cruise	1-28
Boom/Mast Hoist System Operation	1-29
Boom/Mast Hoist Brake and Pawl	1-29
Raising Boom	1-29
Lowering Boom	1-30
Load Drum 1	1-33
System Components	1-33
Load Drum 1 Brake	1-33
Raising Load	1-33
Lowering Load	1-34
Load Drum 2	1-36
System Components	1-36
Load Drum 2 Brake	1-36
Raising Load	1-36
Lowering Load	1-37

Load/Luffing Drum 3	1-39
System Components	1-39
Load Drum 3 Brake and Pawl	1-39
Raising	1-39
Lowering	1-40
Accessory System Components	1-42
Accessory Systems	1-42
Jacking Cylinders	1-42
Counterweight Pins	1-43
Boom Hinge Pins	1-45
Front or Rear Rotating Bed Pins	1-45
Rigging Winch (Drum 0)	1-46
Cab Tilt	1-47
Crawler Pin Cylinders	1-47
Carbody Jacking Cylinders (optional)	1-48
Live Mast	1-49
Hydraulic Cooling Fan	1-53
MAX-ER 16000 Description Of Operation	1-54
MAX-ER Components	1-54
EPIC® Programmable Controller	1-56
Jacking Cylinders	1-57
Telescopic Beam Cylinder	1-60
Counterweight Lift Cylinder	1-63
Wheel Assemblies	1-67
Telescopic Beam Hinge Pins	1-70

SECTION 2 Hydraulic System

Hydraulic Schematics	2-1
Hydraulic System – General	2-1
Checking and Replacing Hydraulic Hoses	2-1
Hydraulic System – Maintenance	2-2
Safety	2-2
Storing And Handling Oil	2-2
Storing And Handling Parts	2-2
Inspecting System	2-6
Replacing Desiccant Breather	2-7
Replacing Filters	2-7
Changing Oil	2-9
Servicing Pumps	2-10
Tightening Hydraulic Connections	2-10
Shop Procedures	2-16
Initial Oil Fill	2-16
Initial Start-Up	2-16
System Calibration and Tests	2-17
Accessory System Checks	2-19
Speed Checks	2-21
Hydraulic System Specifications	2-22
Drum Identification	2-23
Pump Identification	2-24
Pump Components	2-24
Motor Components	2-25
Hydraulic System Test, Calibration, and Adjustment Procedures	2-26
Pressure Test and Calibration Screen	2-26
Pressure Sender Test	2-26
Control Calibration	2-27
High Pressure Test	2-28

Charge Pressure Test	2-29
High Pressure Adjustment	2-29
Charge Pressure Adjustment	2-31
Pump Neutral Adjustment	2-31
Low Pressure Accessory Adjustment	2-31
Motor Leakage Test	2-33
Loop Flushing Valve Adjustment	2-33
Manual Override Tests	2-33
Pressure Sender Replacement	2-35
Disc Brake Operational Test	2-36
Cab Tilt Adjustment	2-36

SECTION 3 Electric System

Electrical Drawings and Schematics	3-1
Checking and Replacing Electrical Components	3-1
Circuit Breaker and Fuse ID	3-2
Test Voltages	3-6
Node Heading Descriptions	3-6
Alphabetical Index of Components	3-7
Abbreviations	3-7
Node 1 — Master (Front Console)	3-8
Node 2 — Handles and Cab Controls	3-10
Node 3 — Drum Pumps, Alarms, Sensors, and Accessories	3-12
Node 4 — Pressure Senders, Drum 4, and Accessories	3-14
Node 5 — Drum 2, Sensors, and Auto Lubrication	3-16
Node 6 — Drum Brakes, Pawls, and Motor Sensors	3-19
Node 7 — MAX-ER	3-21
Boom Node 20 — Block-Up, Load Sensor, Angle Indicator, and Wind Speed	3-24
Jib Node 21 — Block-Up, Load Pin, And Wind Speed	3-25
Node 0 — Engine	3-26
Digital Output Disable Chart	3-27
Digital Output Reference Chart	3-28
Digital Input Reference Chart	3-29
MAX-ER Faults (Software, m002047.0 & up)	3-30
Wired Remote	3-31
Checking Electrical Inputs/Outputs	3-32
Displays	3-34
Display Controls	3-34
Display Brightness and Color Contrast	3-34
Restore Factory Default Display Settings	3-34
Blank Display	3-34
Main GUI Display Format	3-35
Screen Prompts	3-35
Menu Screen	3-35
Information Screen	3-36
Diagnostic Screen	3-40
Function Mode Screens	3-45
CAN Bus Screen	3-47
Camera Screen (Optional)	3-52
Dielectric Grease	3-52

SECTION 4 Boom

Automatic Boom Stop Adjustment	4-1
Maximum Boom Angle	4-1
Operation	4-1
Maintenance	4-1

Bypass Limit Test	4-2
Adjustment	4-5
Actuator Rod Replacement	4-5
Physical Boom Stop	4-7
Physical Boom Stop Angles.....	4-7
Operation.....	4-7
Adjustment.....	4-7
Boom And Luffing Jib Angle Indicator Calibration	4-8
Mast Angle Adjustment.....	4-8
Mast Angle Sensor	4-8
Adjusting Mast Angle.....	4-8
Drum Pressure-Roller Adjustment	4-9
General	4-9
Adjustment.....	4-9
Strap Inspection and Maintenance.....	4-10
Inspection	4-10
Identifying Straps.....	4-10
Replacement Specifications	4-11
Storing Straps	4-13
Removing Straps from Service	4-13
Inspection Checklist.....	4-13
Lattice Section Inspection and Lacing Replacement	4-15
SECTION 5.....	Hoists
Boom/Mast Hoist Pawl Adjustment	5-1
General	5-1
Maintenance	5-1
Speed Sensor Adjustment	5-2
General	5-2
Speed Sensor Replacement	5-2
Speed Sensor Adjustment.....	5-2
Minimum Bail Limit Adjustment	5-2
Weekly Maintenance	5-3
Adjustment.....	5-3
Block-Up Limit Control	5-4
General	5-4
Operation.....	5-4
Maintenance	5-7
Adjustment.....	5-7
Wire Rope Lubrication	5-9
Wire Rope Inspection and Replacement	5-9
Keeping Records	5-9
Inspecting Wire Rope In Use.....	5-9
Inspecting Rope Not In Regular Use	5-9
Replacing Wire Rope.....	5-9
Distributing Wire Rope Wear	5-11
Drum Kicker Adjustment.....	5-12
General	5-12
Adjustment.....	5-12
Sheave, Roller, And Drum Inspection	5-14
Load Block And Hook-and-Weight Ball Inspection	5-15
SECTION 6.....	Swing
Manual Release of Swing Brake and Lock.....	6-1
SECTION 7.....	Power Train

Battery Maintenance 7-1
 Safety Information 7-1
 Causes of Battery Failure 7-1
 Multiple Battery System 7-1
 Maintenance 7-2
 Charging 7-3
 Storage 7-3
 Battery Disconnect Switch 7-3
 Engine Air Cleaner Maintenance – Past production and Tier 3 7-5
 Inspection 7-5
 Service 7-5
 Engine Air Cleaner Maintenance — Tier 4 Engine 7-6
 Inspection 7-6
 Air Cleaner — Tier 4 Only 7-8
 Engine Clutch Adjustment 7-9
 Operation 7-9
 Adjustment 7-9
 Engine Throttle Adjustment 7-10
 Hand Throttle Controller 7-10
 Foot Throttle Controller 7-10
 Engine Speed Calibration 7-10
 Engine Enclosure 7-12
 Engine Belt Routing — Tier 3 Engine ONLY 7-12
 Engine Belt Routing — Tier 4 Engine ONLY 7-12
 Engine Cooling System Fill — Current Production Tier 4 7-13
 General 7-13
 Cooling System Operation 7-13
 Maintenance 7-14
 Draining Radiator 7-14
 Filling the Cooling System 7-16
 Diesel Particulate Filter Regeneration — Tier 4 ONLY 7-17
 General 7-17
 Regeneration 7-17
 Diesel Particulate Filter (DPF) Maintenance 7-19
 Removing the DPF for Cleaning or Replacement 7-19
 Diesel Particulate Filter Component Overview 7-20
 Installing the DPF 7-21
 Side Inlet Re-orientation 7-22

SECTION 8 Under Carriage

Turntable Bearing Installation 8-1
 Turntable Bearing Bolt Torque 8-1
 Torque Requirements 8-1
 Crawler Adjustment 8-3
 Maintenance 8-3
 Tread Slack Adjustment 8-3
 Hydraulic Hand Pump 8-6
 Assembly 8-6
 Maintenance 8-6
 Air Removal 8-6
 Operation 8-6

SECTION 9 Lubrication

Lubrication 9-1
 Lube and Coolant Product Guide 9-1

SECTION 10.....Troubleshooting
Introduction..... 10-1
Safety Summary..... 10-1
General Troubleshooting..... 10-1
Troubleshooting Charts..... 10-2

Reference Only

Thanks for your reading.

Please click here to download complete manual instantly.

And can also choose other manuals.

Feel free --->write to me with any questions.

Our service email:

manuals007@hotmail.com