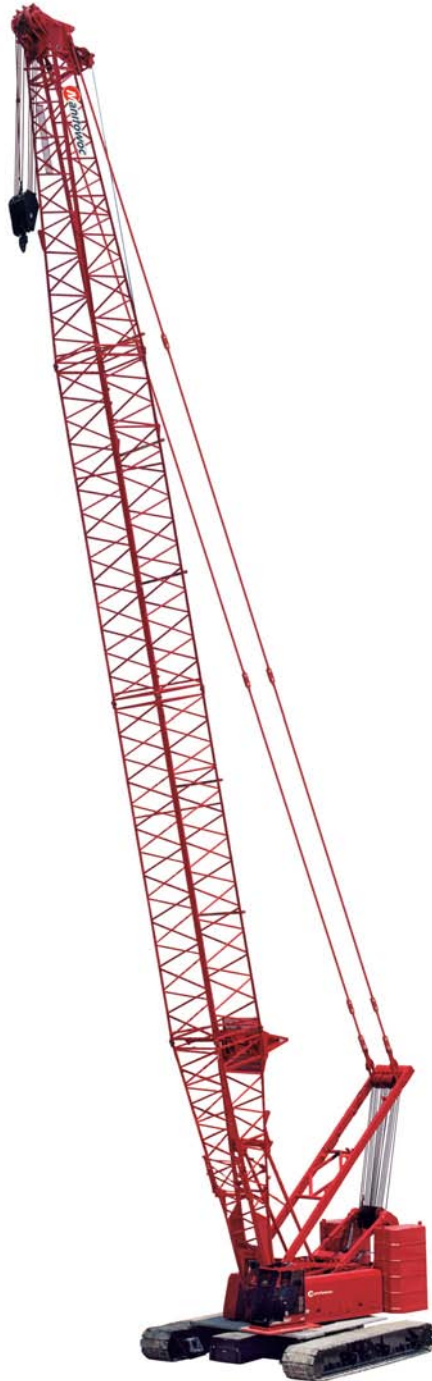


Manitowoc 14000

Service/Maintenance Manual





SERVICE/MAINTENANCE MANUAL

This manual has been prepared for and is considered part of -

14000

Crane Model Number

14001Ref

Crane Serial Number

This manual is divided into the following sections:

SECTION 1	INTRODUCTION
SECTION 2	HYDRAULIC SYSTEM
SECTION 3	ELECTRIC SYSTEM
SECTION 4	BOOM
SECTION 5	HOISTS
SECTION 6	SWING
SECTION 7	POWER TRAIN
SECTION 8	UNDER CARRIAGE
SECTION 9	LUBRICATION
SECTION 10	TROUBLESHOOTING

NOTICE

The serial number of the crane and applicable attachments (i.e. luffing jib, MAX-ER®) is the only method your Manitowoc dealer or Manitowoc Crane Care has of providing you with correct parts and service information.

The serial number is located on a crane identification plate attached to the operator's cab and each attachment. Refer to the Nameplate and Decal Assembly Drawing in Section 2 of this manual for the exact location of the crane identification plate.

Always furnish serial number of crane and its attachments when ordering parts or discussing service problems with your Manitowoc dealer or Manitowoc Crane Care.



WARNING

To prevent death or serious injury:

- Avoid unsafe operation and maintenance.
Crane and attachments must be operated and maintained by trained and experienced personnel. Manitowoc is not responsible for qualifying these personnel.
- Do not operate or work on crane or attachments without first reading and understanding instructions contained in Operator Information Manual and Service Manual supplied with crane and applicable attachments.
- Store Operator Information Manual and Service Manual in operator's cab.
If Operator Information Manual or Service Manual is missing from cab, contact your Manitowoc dealer for a new one.

THE ORIGINAL LANGUAGE OF THIS PUBLICATION IS ENGLISH

See end of this manual for Alphabetical Index

SECTION 1	Introduction
Continuous Innovation	1-1
Safety Messages	1-1
General	1-1
Safety Alert Symbol	1-1
Signal Words	1-1
Safe Maintenance Practices	1-1
Maintenance Instructions	1-1
Safe Maintenance Practices	1-2
Environmental Protection	1-3
Reference to Past and Current Production in this manual	1-3
Identification and Location of Components	1-4
General Overview	1-4
Past Production Tier 3	1-6
Current Production Tier 3 and Tier 4	1-7
Front of Crane/Cab Components	1-8
Left Side Components - Past Production Tier 3	1-9
Left Side Components - Current Production Tier 3/4	1-10
Left Side Components Continued	1-11
Right Side Components - Past Production Tier 3	1-12
Right Side Components - Current Production Tier 3/4	1-13
Rear/Top of Crane Components	1-14
Carbody/Crawler Components	1-15
Crane Description of Operation	1-16
General Abbreviations	1-16
Solenoid Valve Identification	1-16
General Operation	1-17
Hydraulic Components	1-18
Pressure Monitoring	1-19
Basic Operation	1-19
Gear Pumps (optional)	1-21
Engine Controls	1-21
Brake and Drum Pawl Operation	1-21
Electrical Control System	1-22
Display Screens	1-22
Electrical Power to Operator's Cab	1-22
Pressure Senders and Speed Sensors	1-24
System Faults	1-24
Swing System	1-26
Swing Brake	1-26
Swing Left	1-26
Swing Right	1-26
Swing Holding Brake Switch	1-26
Travel (Crawlers) System	1-30
Travel Brakes	1-30
Travel Motors	1-30
Travel Forward	1-30
Travel in Reverse	1-30
Two-Speed Travel Operation	1-32
Travel Cruise	1-32
Drum 4 (Boom Hoist) System	1-34
Drum 4 Brake and Pawl	1-34
Raising Boom	1-34
Lowering Boom	1-35
Drum 1 (Front Drum) System	1-38
Drum 1 Brake	1-38

Raising Load	1-38
Lowering Load	1-40
Drum 2 (Rear Drum) System	1-41
Drum 2 Brake	1-41
Raising Load	1-41
Lowering Load	1-43
Drum 1 and Drum 2 - Free Fall (Optional)	1-44
Free Fall — Drum Hoisting	1-45
Free Fall — Drum Lowering	1-45
Drum 3 (Auxiliary/Luffing Jib) System	1-49
Drum 3 Brake and Pawl	1-49
Raising	1-49
Lowering	1-51
Upper Accessory System	1-53
Gantry System	1-53
Mast System	1-57
Boom Hinge Pins	1-61
Cab Tilt	1-63
Lower Accessory System	1-65
Carbody Jacking System	1-65
Crawler Pin Cylinders	1-69
Back Hitch Pin Cylinders	1-73
Hydraulic Engine Cooling Fan - Tier 4 Only	1-76

SECTION 2 Hydraulic System

Hydraulic Schematics	2-1
Hydraulic System – General	2-1
Checking and Replacing Hydraulic Hoses	2-1
Hydraulic System – Maintenance	2-2
Safety	2-2
Storing and Handling Oil	2-2
Storing and Handling Parts	2-3
Inspecting System	2-3
Replacing Desiccant Breather	2-4
Replacing Filter	2-5
Changing Oil	2-6
Servicing Pumps	2-6
Hydraulic Connections	2-7
Shop Procedures	2-13
Initial Oil Fill	2-13
Initial Start-Up	2-13
High Pressure Accessory System Checks	2-15
Low Pressure Accessory System Checks	2-15
Speed Checks	2-16
Hydraulic System Specifications	2-17
Drum Identification	2-18
Pump Identification	2-19
Pump Components	2-19
Motor Components	2-20
Hydraulic System Test, Calibration, and Adjustment Procedures	2-21
Pressure Test and Calibration Screen	2-21
Pressure Sender Test	2-21
Control Calibration	2-22
High Pressure Test	2-23
Charge Pressure Test	2-24
High Pressure Adjustment	2-25

Charge Pressure Adjustment	2-26
Pump Neutral Adjustment	2-26
Motor Leakage Test	2-27
Low Pressure Accessory Adjustment	2-28
Loop Flushing Valve Adjustment	2-28
Manual Override Tests	2-28
Pressure Sender Replacement	2-30
Disc Brake Operational Test	2-30
SECTION 3	Electric System
Electrical Drawings and Schematics	3-1
Checking and Replacing Electrical Components	3-1
Circuit Breakers	3-2
Engine Node	3-2
Operator's Cab	3-2
Grid Heater	3-2
Test Voltages	3-4
Alphabetical Index of Components	3-4
Node Heading Descriptions	3-5
Abbreviations	3-6
Node 1 — Master (Front Console)	3-7
Node 2 — Handles and Cab Controls	3-9
Node 3 — Drum 1, 2 & 3, Alarms, Sensors, and Accessories	3-11
Node 4 — Drum 4, Pumps, and Accessories	3-14
Node 5 — Swing Limits (Optional)	3-17
Boom Remote Input Node	3-18
Luffing Jib Remote Input Node	3-19
Node 0 — Engine	3-20
Checking Electrical Inputs/Outputs	3-25
Display Controls	3-27
Display Brightness and Color Contrast	3-27
Factory Default Display Settings	3-27
Blank Display	3-27
Main GUI Display Format	3-27
Screen Prompts	3-28
Menu Screen	3-28
Information Screen	3-29
Diagnostic Screens	3-33
Function Mode Screens	3-36
CAN Bus Screen	3-40
Dielectric Grease	3-46
SECTION 4	Boom
Automatic Boom Stop Adjustment	4-1
Maximum Operating Angles	4-1
Maintenance	4-1
Adjustment	4-3
Actuator Rod Replacement	4-3
Physical Boom Stop	4-5
Physical Boom Stop Angles	4-5
Operation	4-5
Adjustment	4-5
Boom and Luffing Jib Angle Indicator Calibration	4-6
Mast Angle Adjustment	4-6
Mast Angle Sensor	4-6
Adjusting Mast Angle	4-6

Gantry Limit Switch 4-7
 Operation 4-7
 Strap Inspection and Maintenance 4-8
 Inspection 4-8
 Identifying Straps 4-8
 Replacement Specifications 4-9
 Storing Straps 4-11
 Removing Straps from Service 4-11
 Inspection Checklist 4-11
 Lattice Section Inspection and Lacing Replacement 4-11

SECTION 5 Hoists

Free Fall Clutch/Brake Inspection and Overhaul 5-1
 Inspection 5-1
 Overhaul 5-2
 Drum 4 Pawl Adjustment 5-3
 General 5-3
 Maintenance 5-3
 Drum 3 Pawl Adjustment 5-4
 General 5-4
 Maintenance 5-4
 Adjustment 5-4
 Speed Sensor Adjustment 5-5
 General 5-5
 Speed Sensor Replacement 5-5
 Speed Sensor Adjustment 5-5
 Minimum Bail Limit Adjustment 5-7
 Weekly Maintenance 5-7
 Limit Switch Head Position 5-7
 Adjustment 5-7
 Block-Up Limit Control 5-8
 General 5-8
 Operation 5-8
 Maintenance 5-8
 Adjustment 5-10
 Wire Rope Lubrication 5-11
 Wire Rope Inspection and Replacement 5-11
 Keeping Records 5-11
 Inspecting Wire Rope In Use 5-11
 Inspecting Rope Not In Regular Use 5-11
 Replacing Wire Rope 5-11
 Distributing Wire Rope Wear 5-13
 Sheave, Roller, And Drum Inspection 5-14
 Load Block And Hook-and-Weight Ball Inspection 5-18

SECTION 6 Swing

Manual Release of Swing Brake 6-1
 Swing Limiter (optional) 6-3
 General 6-3
 Adjustment 6-3

SECTION 7 Power Train

Battery Maintenance 7-1
 Safety Information 7-1
 Causes Of Battery Failure 7-1
 Multiple Battery System 7-1

Maintenance	7-2
Charging	7-3
Storage	7-3
Battery Disconnect Switch	7-3
Battery Assembly Identification	7-4
Engine Air Cleaner Maintenance	7-6
Past Production Tier 3	7-6
Current Production - Tier 3/4	7-9
Engine Clutch Adjustment	7-10
Past production - Tier 3	7-10
Current Production - Tier 3/4	7-12
Engine Throttle Adjustment	7-15
Hand Throttle Controller	7-15
Foot Throttle Controller	7-15
Engine Speed Calibration	7-15
Engine Enclosure - Current Production - Tier 3/4	7-16
Engine Belt Routing	7-16
Engine Driven Fan - Past Production Tier 3	7-16
Hydraulic Driven Fan - Current Production Tier 3/4	7-16
Engine Cooling System Fill - Current Production - Tier 3/4	7-16
Diesel Particulate Filter - Tier 4	7-18
General	7-18
Regeneration	7-18
Maintenance	7-20

SECTION 8. Under Carriage

Turntable Bearing Installation	8-3
Turntable Bearing Bolt Torque	8-3
Torque Requirements	8-3
Crawler Adjustment	8-5
Maintenance	8-5
Tread Slack Adjustment	8-5
Hydraulic Hand Pump	8-7
Assembly	8-7
Maintenance	8-7
Air Removal	8-7
Operation	8-7

SECTION 9. Lubrication

Lubrication	9-1
Lube and Coolant Product Guide	9-1

SECTION 10. Troubleshooting

Introduction	10-1
Safety Summary	10-1
General Troubleshooting	10-1
Troubleshooting Charts	10-2

Thanks for your reading.

Please click here to download complete manual instantly.

And can also choose other manuals.

Feel free --->write to me with any questions.

Our service email:

manuals007@hotmail.com