

Form No.
908171

GE1202

Compact

Excavator

PARTS MANUAL

GEHL[®]

Introduction

When ordering service parts, specify the correct part number, full description, quantity required, the unit model number and serial number. For your safety and continued proper operation, use only genuine GEHL service parts.

The model and serial number for this unit are on a tag located on a panel on the front of the cabin.

“Right” and “left” are determined from a position sitting on the seat and facing forward. From this position, the cab is on the “left” and the hydraulic valve compartment is on the “right”.

GEHL® Company reserves the right to make changes or improvements in the design or construction of any part of the unit without incurring the obligation to install such changes on any previously delivered units.

Refer to the abbreviations table located on this page for the various fastener descriptions. Standard attaching hardware torque values are also provided on the inside back cover. Metric torque values shown in the illustra-

tions are in Newton-meters and can be converted to Foot-pounds by multiplying by 0.738.

In the exploded view parts list, Reference Numbers may have additional information following the Reference Number.

Unless otherwise specified, all Cap Screws or Bolts are Grade 5, cadmium or zinc plated; Hexagon Nuts for Grade 5 Screws or Bolts are Grade B; Hexagon Nuts for other Screws or Bolts are Grade A.

NOTE: *The following abbreviations may be used herein:*

CP	– Cotter Pin
CS	– Cap Screw (Hexagon Head)
FHCS	– Flat Head Cap Screw
HN	– Hex Nut
LN	– Lock Nut
LT	– Left Hand
M	– Metric
MM/mm	– Millimeter
RT	– Right

TABLE OF CONTENTS

Introduction	Inside Front Cover	Hydraulic Oil Tank	55
Decal Locations	2–7	Hydraulic Pump	56–57
Undercarriage, Steel Tracks	8	Track Drive	58
Bottom Roller	9	Swivel Joint	59
Top Roller	10	Swivel Joint Breakdown	60
Steel Track	11	Swivel Drive	61
Track Tensioner	12	Main Control Valve	62–64
Undercarriage, Rubber Track	13	Double Control Valve	65
Roller	14	Pilot Supply Unit	66
Track Tensioner, Rubber Track	15	Stop Valve	67
Dozer Blade	16	Selection Valve	68
Upper Carriage	17	Valve	69
Chassis Cover	18	Distribution Block	70
Lubrication	19	Hand Controls	71
Rear Wall	20	Travel Valve	72
Side Cover	21	Dozer Valve	73
Counterweight	22	Auxiliary Hydraulics Valve	74
Hood	23	Boom Cylinder	75
Valve Body Cover	24	Dipper Cylinder	76
Tank Cover	25	Bucket Cylinder	77
Boom Arm	26	Dozer Cylinder	78
Dipper Arm	27	Boom Offset Cylinder	79
Connecting Link	28	Hoses, Oil Cooler	80
Cabin Frame	29	Hoses, Hydraulic Pump	81
Cabin Frame 2	30	Hoses, Track Drive	82
Cabin Frame 3	31	Hoses, Hydraulic Pump	83
Main Harness	32	Hoses, Control Return Valves	84
Windshield	33	Hoses, Boom Offset Cylinder	85
Cabin Windows	34	Hoses, Dozer Blade Cylinder	86
Sliding Side Window	35	Hoses, Auxiliary Hydraulics	87
Cabin Door	36	Hoses, Hand Controls	88
Cabin Mats	37	Hoses, Check Valves	89
Heater	38	Hoses, Boom	90
Seat	39	Hoses, Boom Cylinders	91
Heater Box	40	Hoses, Dipper Arm	92–93
Engine Fan, Water Pump & Thermostat	41	Hoses, Stall Warning Device	94
Gasket Set & Cylinder Hone	42	Electrical, Battery & Mount	95
Engine Alternator & Starter	43	Electrical, Engine Harness	96
Oil Filter & Pan	44	Electrical, Chassis Harness	97
Fuel Tank	45	Electrical, Left Armrest	98
Fuel Injection System	46–47	Electrical Right Armrest	99
Fuel Pump	48	Electrical, Relay Plate	100
Hand Throttle	49	Electrical, Lights	101
Motor Mounts	50	Electrical, Boom Work Light	102
Radiator	51	Tool Kit	103
Air Cleaner	52	Alphabetical Index	104–105
Exhaust	53	Numerical Index	106–115
Hydraulic Pump Drive	54	Torque Chart	Inside Rear Cover

DECAL LOCATIONS

GENERAL INFORMATION

Decal location information is provided to assist in the proper selection and application of new decals, in the event the original decals become damaged or the machine is repainted. Refer to the listing for the illustration reference number, part number, description and quantity of each decal provided in the kit. Refer to the appropriate illustrations for replacement locations.

To ensure proper selection of the correct replacement decals, compare all of the various closeup location drawings to your machine before starting to refinish the unit. Then circle each shown decal (applicable to your machine) while checking off its part number in the listing. After you have verified all the decals needed for replacement, place any extra unnecessary decals aside for disposal.

NOTE: Refer to the SAFETY chapter of the Operator's Manual for the specific information provided on all of the various safety decals furnished in the decal kit(s).

NEW DECAL APPLICATION

Surfaces MUST be free from dirt, dust, grease and other foreign material before applying the new decal. To apply, remove the smaller portion of the decal backing paper and apply this part of the exposed adhesive backing to the clean surface while maintaining proper position and alignment. Peel the other portion of the backing paper off slowly while applying hand pressure to smooth out the decal surface.



CAUTION

ALWAYS follow safety precautions on decals. Replace the decals if they are damaged, or if the unit is repainted. If repainting, BE SURE all applicable decals are affixed to your unit.

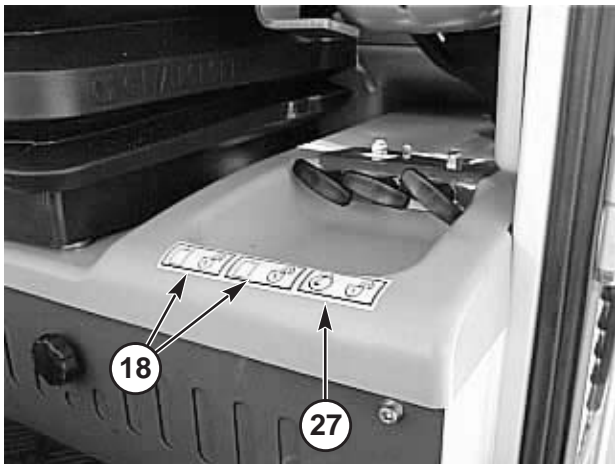
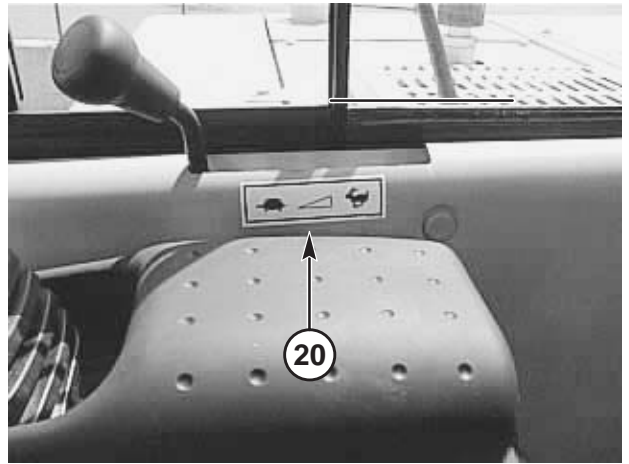
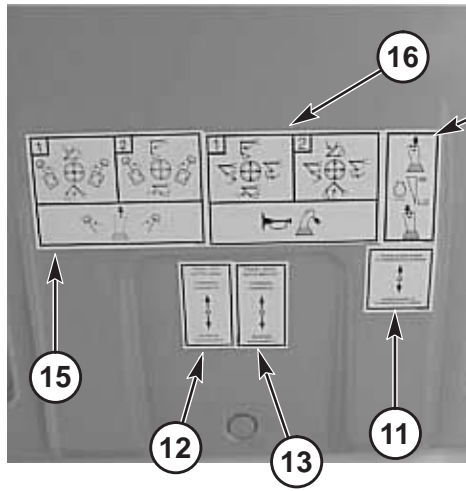
PAINT NOTICE

Use this list to order paint for refinishing:

906213	One Gal. Construction Yellow
906323	One Qt. Charcoal Grey
906317	One Gal. Charcoal Grey
906214	6 (12 oz. Spray Cans) Yellow
906318	6 (12 oz. Spray Cans) Grey

The decal kit for the GE1202 Compact Excavator is listed below:

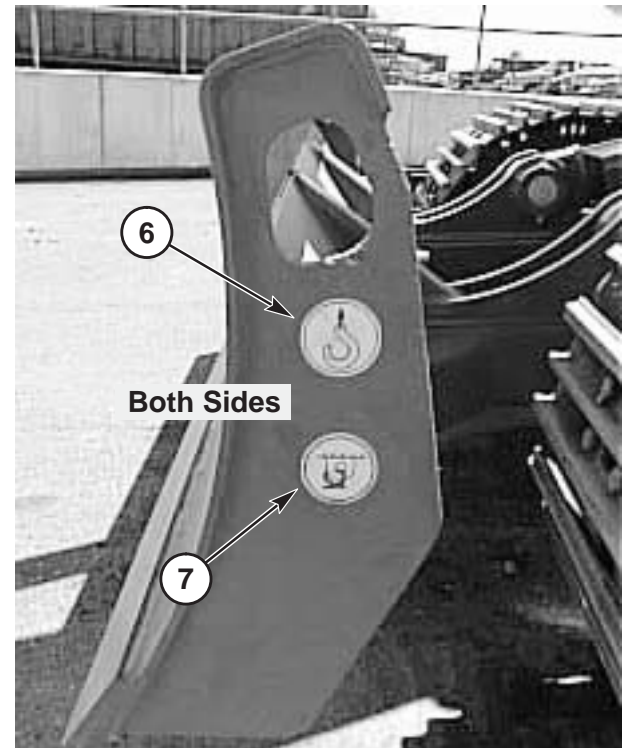
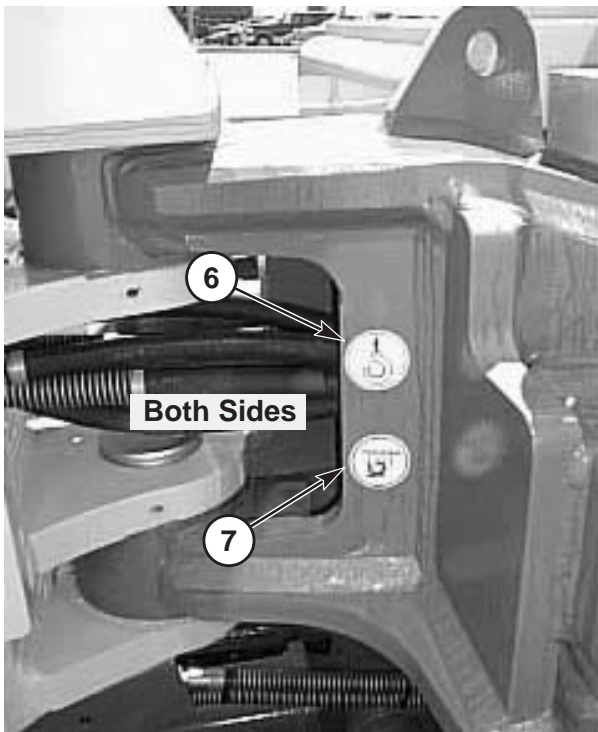
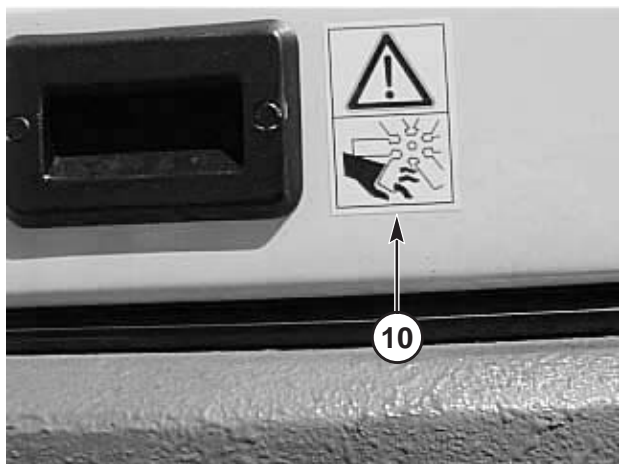
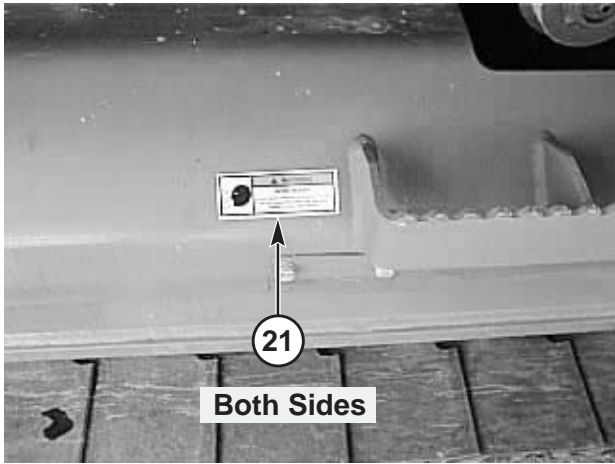
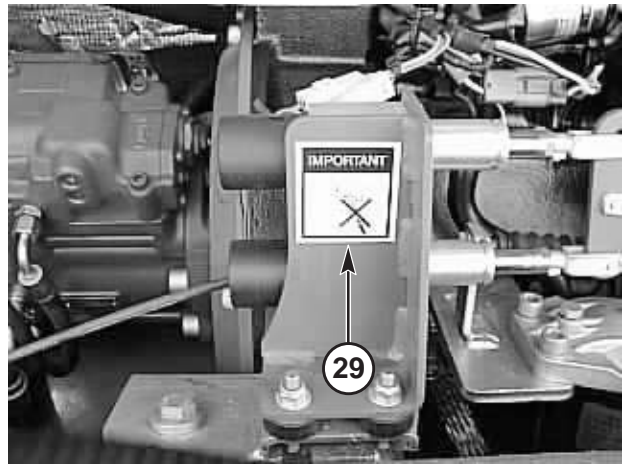
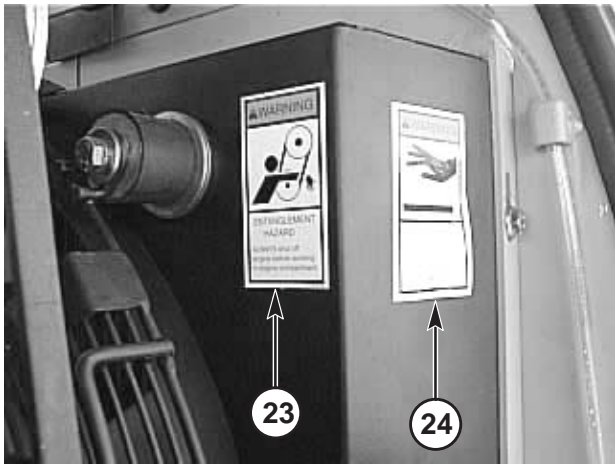
Ref. No.	Part No.	Description & Quantity
	164652	Decal Kit - GE1202
1	161965	Diesel Fuel
2	161966	Hydraulic Oil
3	161967	Lubrication
4	161969	WARNING – Hydraulic Reservoir
5	161970	Arrow (2 places)
6	161981	Lift Point (4 places)
7	161982	Tiedown Point (4 places)
8	161985	WARNING – Keep Away (2 places)
9	161986	WARNING – Read Manual
10	161987	WARNING – Engine Fan
11	162449	Dozer Blade
12	162450	Travel – Left
13	162451	Travel – Right
14	162452	Right Joystick Control
15	162453	Left Joystick Control
16	162824	Left Graphic
17	162825	Right Graphic
18	162832	Hydraulics Compartment Latch (2 places)
19	163973	WARNING – Mandatory Shutdown
20	163974	Manual Throttle
21	163975	WARNING – Avoid Injury
22	163976	WARNING – Avoid Injury
23	163977	WARNING – Entanglement Hazard
24	163978	WARNING – Hot Surface
25	163979	Valve Position
26	163980	Joystick Throttle
27	164853	Engine Compartment Latch
28	164854	WARNING – Avoid Injury
29	164858	IMPORTANT – Do Not Pressure Wash
30	160394	Color Bar (2 places)
31	119661	GEHL
32	122288	GEHL (2 places)
33	122735	GEHL
34	135896	GEHL (2 places)
35	160893	GE1202 (2 places)



The decal listing has been repeated for your convenience. The decal kit for the GE1202 Compact Excavator is listed below:

Ref. Part
No. No. Description & Quantity

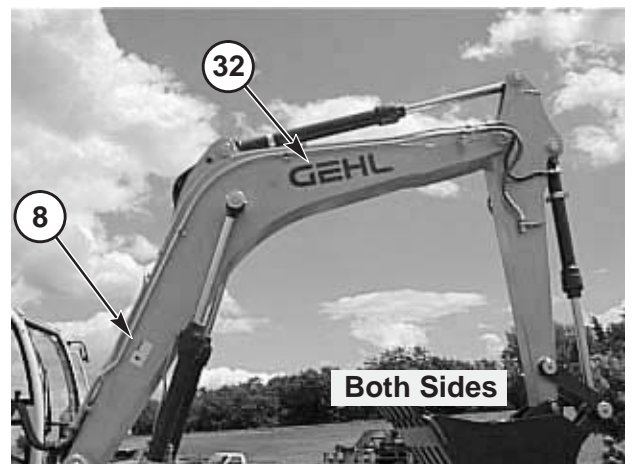
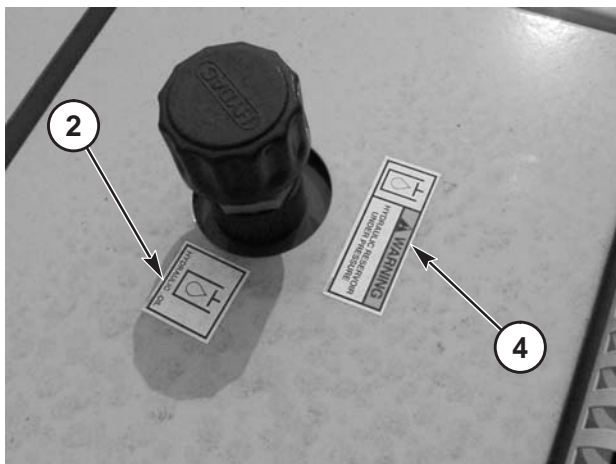
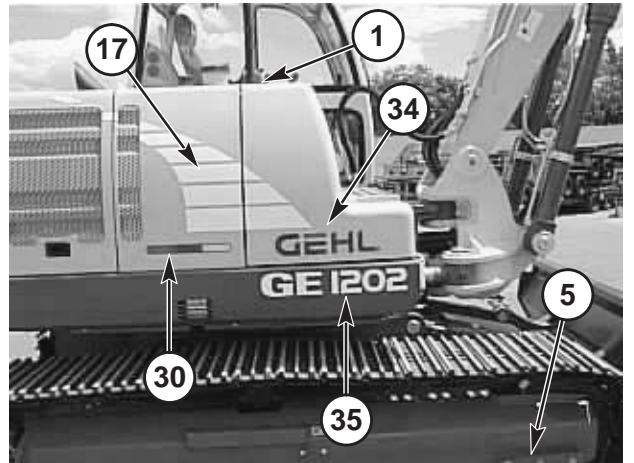
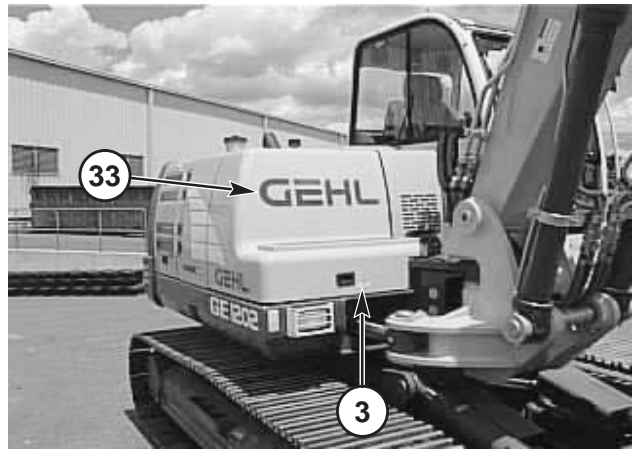
	164652	Decal Kit - GE1202			
1	161965	Diesel Fuel	14	162452	Right Joystick Control
2	161966	Hydraulic Oil	15	162453	Left Joystick Control
3	161967	Lubrication	16	162824	Left Graphic
4	161969	WARNING – Hydraulic Reservoir	17	162825	Right Graphic
5	161970	Arrow (2 places)	18	162832	Hydraulics Compartment Latch (2 places)
6	161981	Lift Point (4 places)	19	163973	WARNING – Mandatory Shutdown
7	161982	Tiedown Point (4 places)	20	163974	Manual Throttle
8	161985	WARNING – Keep Away (2 places)	21	163975	WARNING – Avoid Injury
9	161986	WARNING – Read Manual	22	163976	WARNING – Avoid Injury
10	161987	WARNING – Engine Fan	23	163977	WARNING – Entanglement Hazard
11	162449	Dozer Blade	24	163978	WARNING – Hot Surface
12	162450	Travel – Left	25	163979	Valve Position
13	162451	Travel – Right	26	163980	Joystick Throttle
			27	164853	Engine Compartment Latch
			28	164854	WARNING – Avoid Injury
			29	164858	IMPORTANT – Do Not Pressure Wash
			30	160394	Color Bar (2 places)
			31	119661	GEHL
			32	122288	GEHL (2 places)
			33	122735	GEHL
			34	135896	GEHL (2 places)
			35	160893	GE1202 (2 places)



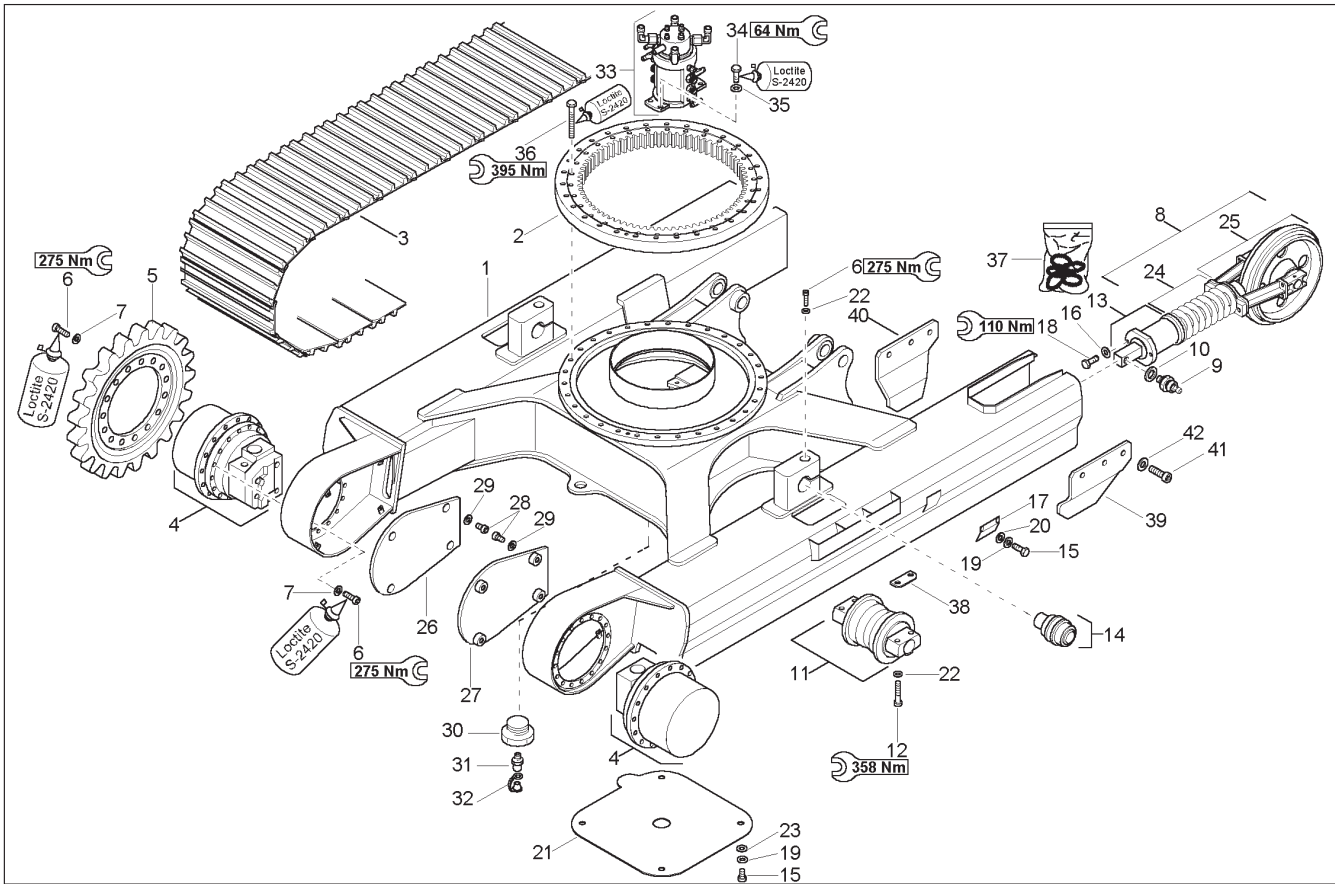
The decal listing has been repeated for your convenience. The decal kit for the GE1202 Compact Excavator is listed below:

Ref. Part
No. No. Description & Quantity

	164652	Decal Kit - GE1202			
1	161965	Diesel Fuel	14	162452	Right Joystick Control
2	161966	Hydraulic Oil	15	162453	Left Joystick Control
3	161967	Lubrication	16	162824	Left Graphic
4	161969	WARNING – Hydraulic Reservoir	17	162825	Right Graphic
5	161970	Arrow (2 places)	18	162832	Hydraulics Compartment Latch (2 places)
6	161981	Lift Point (4 places)	19	163973	WARNING – Mandatory Shutdown
7	161982	Tiedown Point (4 places)	20	163974	Manual Throttle
8	161985	WARNING – Keep Away (2 places)	21	163975	WARNING – Avoid Injury
9	161986	WARNING – Read Manual	22	163976	WARNING – Avoid Injury
10	161987	WARNING – Engine Fan	23	163977	WARNING – Entanglement Hazard
11	162449	Dozer Blade	24	163978	WARNING – Hot Surface
12	162450	Travel – Left	25	163979	Valve Position
13	162451	Travel – Right	26	163980	Joystick Throttle
			27	164853	Engine Compartment Latch
			28	164854	WARNING – Avoid Injury
			29	164858	IMPORTANT – Do Not Pressure Wash
			30	160394	Color Bar (2 places)
			31	119661	GEHL
			32	122288	GEHL (2 places)
			33	122735	GEHL
			34	135896	GEHL (2 places)
			35	160893	GE1202 (2 places)



GE1202 – UNDERCARRIAGE, STEEL TRACKS



Ref. No.	Part No.	Description	Qty. Req.	Ref. No.	Part No.	Description	Qty. Req.
1	164236	UNDERCARRIAGE	1	22	161637	WASHER/NORD-LOCK NL 16	50
2	164241	TURNTABLE	1	23	161640	WASHER/GR A 10.5	4
3	164120	STEEL CHAIN	2	24	164177	SPRING SET	2
4	164190	TRACK DRIVE UNIT	2	25	164178	TENSION WHEEL + SLIDE PART	2
5	164118	SPROCKET	2	26	164112	COVER LEFT	1
6	651497	SHCS HS M16-1.5 X 50 10.9	62	27	164111	COVER RIGHT	1
7	161637	WASHER/NORD-LOCK NL 16 STUCK	62	28	651515	SHCS HS M8-1.2 X 20 8.8	8
8	164116	TRACK TENSIONING COMPLETE	2	29	161676	RING/SNAP S8	8
9	160638	NON RETURN VALVE	2	30	161417	PLUG	1
10	160865	SCREW SEAL	2	31	161412	LUBRICATION NIPPLE	1
11	164119	ROLLER COMPLETE	12	32	161416	PROTECTION CAP	1
12	164900	SCREW	48	33	163068	SECTION	1
13	160886	TENSION CYLINDER	2	34	651395	CS M10-1.5 X 30 C 10.9	4
14	164242	ROLLER COMPLETE	2	35	161635	WASHER/NORD-LOCK NL 10	4
15	651391	CS M10-1.5 X 20 C 8.8	8	36	164910	SCREW	36
16	161643	WASHER/ROUND	4	37	160945	SEALS TRACK TENSION CYL.	2
17	164113	COVER	2	38	164238	BRACKET	24
18	651487	SHCS HS M12-1.7 X 50 10.9	4	39	164240	CHAIN GUARD LEFT	2
19	161669	RING/SNAP S10	8	40	164239	CHAIN GUARD RIGHT	2
20	161663	WASHER/GR A 10.5	4	41	161647	WASHER/ROUND HI-TENS 17	12
21	164237	COVER	1	42	164900	SCREW	12

Thanks for your reading.

Please click here to download complete manual instantly.

And can also choose other manuals.

Feel free --->write to me with any questions.

Our service email:

manuals007@hotmail.com