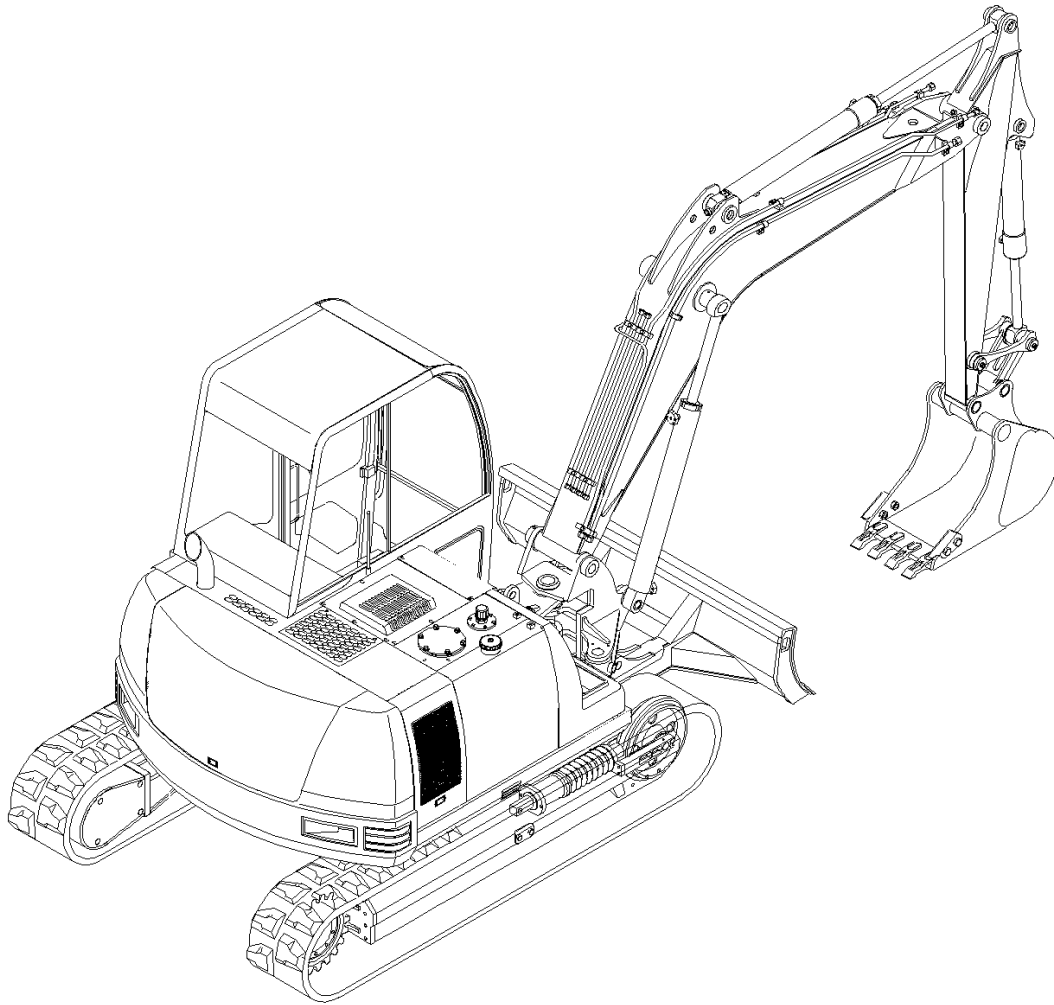


# 802

Form No.  
908545

## Mini-excavator



## PARTS MANUAL

**GEHL CONSTRUCTION**

## Introduction

When ordering service parts, specify the correct part number, full description, quantity required, the unit model number and serial number.

The Mini-excavator model and serial numbers are on a plate located on the lower left front outer side of the cabin (from the driver's perspective).

OUR Company reserves the right to make changes or improvements in the design or construction of any part of the unit without incurring the obligation to install such changes on any previously delivered units.

To ensure continued safe operation, replace damaged or worn-out parts with genuine Factory service parts, BEFORE attempting to operate this equipment.

Refer to the abbreviations table located on this page for the various fastener descriptions.

In the exploded view parts list, Reference numbers marked with an asterisk (\*) indicate that the individual parts of the assembly are listed later in that section. Refer to the Table of Contents for locations of specific assemblies.

**NOTE:** *The following abbreviations may be used herein:*

AR	– As Required
ASSD	– Assembled
ASSY	– Assembly
CB	– Carriage Bolt
CCW	– Counterclockwise
CP	– Cotter Pin
CS	– Cap Screw (Hexagon Head)
CTR	– Center
CW	– Clockwise
DEG	– Degree
DIA	– Diameter
FCHC	
FCS	– Flanged Cap Screw
FHMS	– Flat Head Machine Screw
FL	– Flanged
FLN	– Flanged Lock Nut (Hexagon)
FLS	– Flanged Lock Screw (Hexagon)
FW	– Flat Washer
GA	– Gauge
GR	– Grade
HD	– Hard or Head
HLN	– Hex Lock Nut
HJN	– Hex Jam Nut
HN	– Hex Nut
HS	
INCL	– Includes
INS	
JT	– Joint
LG	– Large
LH	– Left Hand
LN	– Lock Nut
LW	– Lock Washer
M	– Metric
MM/mm	– Millimeter
NF	– National Fine
PB	– Plow Bolt
PTO	– Power Take Off
RH	– Right Hand
RHMS	– Round Head Machine Screw
RPM	– Revolutions Per Minute
RT	– Right
SERR	– Serrated
SHCS	– Socket Head Cap Screw
SHSS	– Socket Head Set Screw
SN	– Serial Number or Slotted Nut
SQ	– Square
SQSS	– Square Head Set Screw
T	– Tooth or Teeth
TFS	– Thread Forming Screw
THMS	– Truss Head Machine Screw
THRD	– Thread
WLDMT	– Weldment
ZO	– Zinc Oxide Plating
#	– Number

# Table of Contents

<b>SECTION A: UNDERCARRIAGE</b> .....	<b>.5</b>
UNDERCARRIAGE .....	6
MODEL 802 — UNDERCARRIAGE .....	6
MODEL 802 — TRACK ROLLER .....	8
MODEL 802 — SUPPORT ROLLER .....	10
MODEL 802 — TENSION ROLLER .....	12
<b>SECTION B: DOZER BLADE</b> .....	<b>.13</b>
DOZER BLADE .....	14
MODEL 802 — DOZER BLADE .....	14
<b>SECTION C: CHASSIS</b> .....	<b>.15</b>
CHASSIS .....	16
MODEL 802 — CHASSIS .....	16
MODEL 802 — CHASSIS COVERS .....	17
MODEL 802 — CHASSIS LUBRICATION .....	18
MODEL 802 — REAR WALL .....	19
MODEL 802 — REAR HOOD .....	20
MODEL 802 — COUNTERWEIGHT .....	21
MODEL 802 — HOOD .....	22
MODEL 802 — TOOL COMPARTMENT .....	23
MODEL 802 — VALVE BRACKETS .....	24
MODEL 802 — VALVE COVERS .....	25
<b>SECTION D: BOOM</b> .....	<b>.27</b>
BOOM .....	28
MODEL 802 — BOOM .....	28
MODEL 802 — STICK .....	29
MODEL 802 — BUCKET LINK .....	30
<b>SECTION E: CABIN</b> .....	<b>.31</b>
CABIN .....	32
MODEL 802 — CABIN MOUNTING .....	32
MODEL 802 — CABIN FRAME 1 .....	34
MODEL 802 — CABIN FRAME 1 .....	35
MODEL 802 — CABIN FRAME 2 .....	36
MODEL 802 — CABIN FRAME 3 .....	37
MODEL 802 — CABIN CABLES .....	38
MODEL 802 — FRONT WINDSHIELD .....	39
MODEL 802 — CABIN WINDOWS .....	40
MODEL 802 — SLIDING SIDE WINDOW .....	41
MODEL 802 — CABIN DOOR .....	42
MODEL 802 — CABIN MATS .....	43
MODEL 802 — CABIN HEATING .....	44
MODEL 802 — DRIVERS SEAT .....	45
<b>SECTION F: DIESEL ENGINE</b> .....	<b>.47</b>
DIESEL ENGINE .....	48
MODEL 802 — DIESEL ENGINE .....	48
MODEL 802 — DIESEL TANK .....	49

MODEL 802 — FUEL LINE .....	50
MODEL 802 — ACCELERATOR .....	51
MODEL 802 — ENGINE SUSPENSION .....	52
MODEL 802 — COOLING WATER SYSTEM .....	53
MODEL 802 — AIR INTAKE .....	54
MODEL 802 — EXHAUST .....	55
<b>SECTION G: HYDRAULIC SYSTEM .....</b>	<b>57</b>
HYDRAULIC SYSTEM .....	58
MODEL 802 — HYDRAULIC PUMP ASSEMBLY .....	58
MODEL 802 — HYDRAULIC OIL TANK .....	59
MODEL 802 — HYDRAULIC OIL COOLER .....	60
MODEL 802 — TRAVELING MOTORS .....	61
MODEL 802 — SWIVEL JOINT .....	62
MODEL 802 — CONTROL VALVE 1 .....	63
MODEL 802 — CONTROL VALVE 2 .....	64
MODEL 802 — CONTROL VALVE .....	65
MODEL 802 — HYDRAULIC PUMP .....	66
MODEL 802 — TURNING MOTOR .....	67
MODEL 802 — PILOT OIL SUPPLY UNIT .....	68
MODEL 802 — SELECTION VALVE .....	69
MODEL 802 — VALVE .....	70
MODEL 802 — DISTRIBUTION BLOCK (BIG) .....	71
MODEL 802 — DISTRIBUTION BLOCK (SMALL) .....	72
MODEL 802 — HAND LEVERS .....	73
MODEL 802 — DOZER BLADE VALVE .....	74
MODEL 802 — TRAVELING VALVES .....	75
MODEL 802 — AUXILIARY HYDRAULICS CONTROL VALVE .....	76
MODEL 802 — BOOM CYLINDER .....	77
MODEL 802 — STICK CYLINDER .....	78
MODEL 802 — BUCKET CYLINDER .....	79
MODEL 802 — BOOM OFFSET CYLINDER .....	80
MODEL 802 — DOZER BLADE CYLINDER .....	81
MODEL 802 — HYDRAULIC OIL COOLER INSTALLATION .....	82
MODEL 802 — BOOM OFFSET CYLINDER INSTALLATION .....	83
MODEL 802 — DOZER BLADE VALVE INSTALLATION .....	84
MODEL 802 — TRACK STEERING MOTOR ASSEMBLY INSTALLATION .....	85
MODEL 802 — HAND LEVER INSTALLATION .....	86
MODEL 802 — PILOT OPERATED CHECK VALVE INSTALLATION .....	87
MODEL 802 — TURNING MOTOR / DISTRIBUTOR INSTALLATION .....	88
MODEL 802 — PRESSURE HOLDING VALVE INSTALLATION .....	89
MODEL 802 — HYDRAULIC PUMP INSTALLATION .....	90
MODEL 802 — BOOM INSTALLATION .....	91
MODEL 802 — BOOM CYLINDER INSTALLATION .....	92
MODEL 802 — BUCKET / STICK INSTALLATION .....	93
<b>SECTION H: ELECTRICAL SYSTEM .....</b>	<b>95</b>
ELECTRICAL SYSTEM .....	96
MODEL 802 — ELECTRICAL INSTALLATION 1 .....	96
MODEL 802 — ELECTRICAL INSTALLATION 2 .....	97
MODEL 802 — CONTROL BOARD .....	98
MODEL 802 — RELAY BOX .....	99

MODEL 802 — RELAY BOX INSTALLATION .....	100
MODEL 802 — LIGHTS .....	101
MODEL 802 — WORKING HEADLIGHTS.....	102
MODEL 802 — BATTERY INSTALLATION .....	103
MODEL 802 — HORN.....	104
<b>SECTION I: TOOLS .....</b>	<b>105</b>
TOOLS .....	106
MODEL 802 — TOOLS .....	106
<b>SECTION J: DECALS .....</b>	<b>107</b>
DECALS .....	108
MODEL 802 — DECALS.....	108

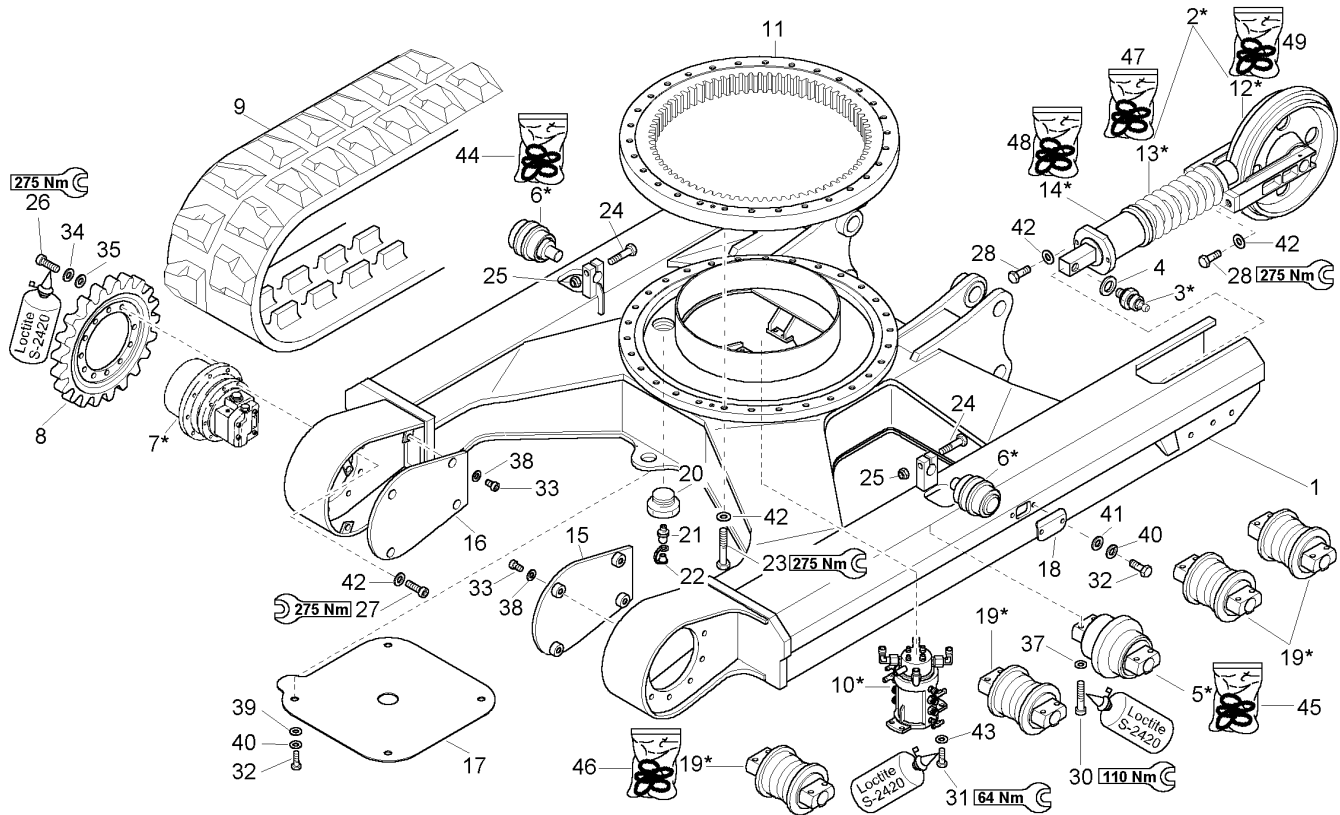


**SECTION A: UNDERCARRIAGE**

UNDERCARRIAGE ..... 6  
MODEL 802 — UNDERCARRIAGE ..... 6  
MODEL 802 — TRACK ROLLER ..... 8  
MODEL 802 — SUPPORT ROLLER ..... 10  
MODEL 802 — TENSION ROLLER..... 12

**SECTION A: UNDERCARRIAGE**

# MODEL 802 MINI-EXCAVATOR UNDERCARRIAGE MODEL 802 — UNDERCARRIAGE



## ET8002001

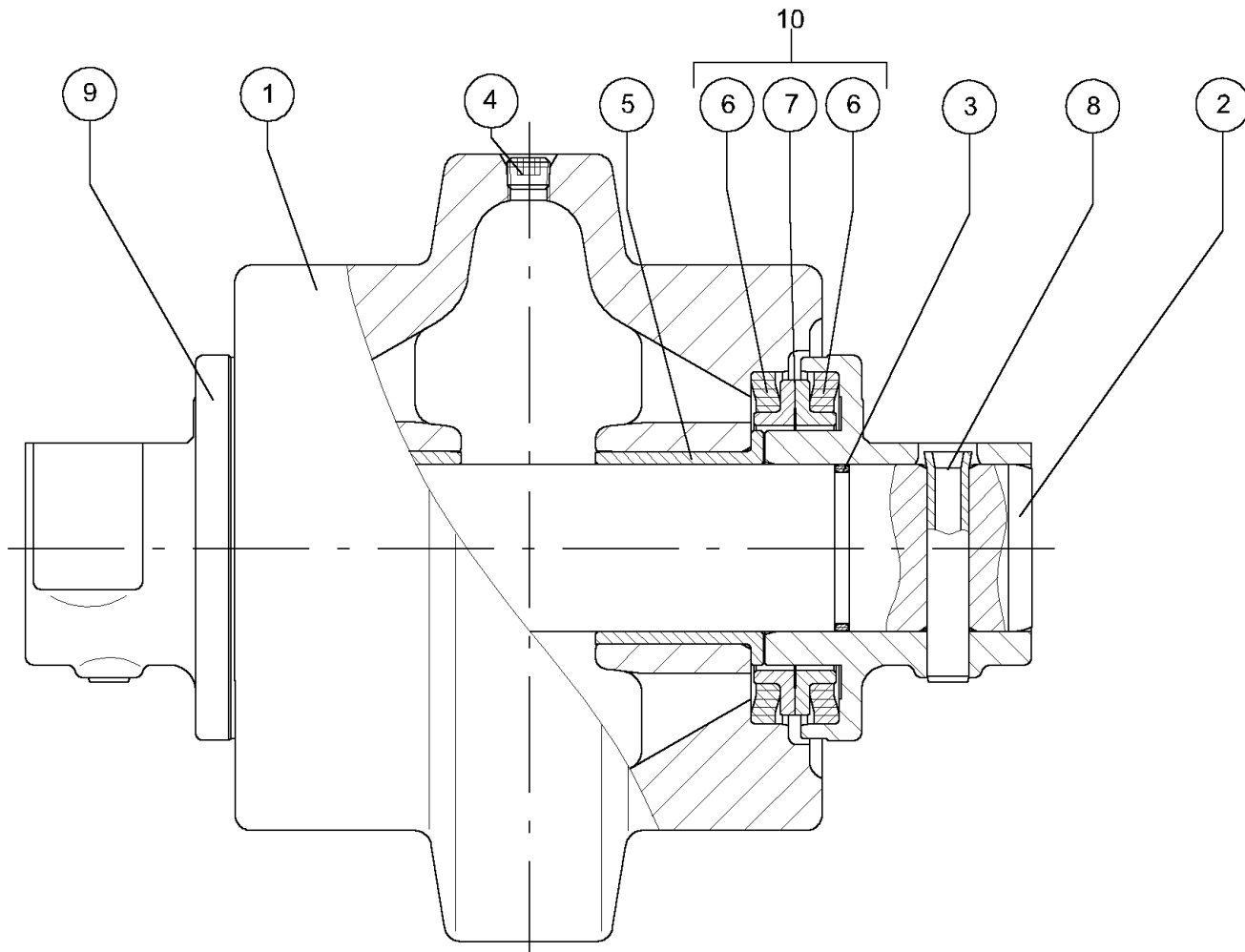
\* Reference numbers marked with an asterisk (\*) indicate that the individual parts of the assembly are listed later in this section. Refer to the Table of Contents for locations of specific assemblies.



**MODEL 802 MINI-EXCAVATOR  
UNDERCARRIAGE  
MODEL 802 — UNDERCARRIAGE**

Ref. No.	Part No.	Description	Qty. Req.	Ref. No.	Part No.	Description	Qty. Req.
1	163168	UNDERCARRIAGE .....	1	25	651451	HLN INS M16-2.0 ZO .....	2
2	161073	TRACK TENSIONER .....	2	26	651491	SHCS HS M14-1.5 X 45 10.9 ZO D912 .....	24
3	160638	NON RETURN VALVE .....	2	27	651497	SHCS HS M16-1.5 X 50 10.9 ZO D912 .....	24
4	161578	SEAL .....	2	28	651414	CS M16-2.0 X 40 C 10.9 ZO .....	4
5	161071	TRACK ROLLER .....	2	30	651486	SHCS HS M12-1.7 X 50 12.9 ZO D912 .....	40
6	161072	SUPPORT ROLLER .....	2	31	651394	CS M10-1.5 X 25 C 10.9 ZO .....	4
7	161149	TRAVEL MOTOR .....	2	32	651391	CS M10-1.5 X 20 C 8.8 ZO .....	8
8	161068	SPROCKET .....	2	33	651515	SHCS HS M8-1.2 X 20 8.8 ZO D912 .....	8
9	161069	RUBBER CHAIN .....	2	34	161625	LW SPRING B14 DIN7983 .....	24
10	163068	SWIVEL JOINT .....	1	35	161646	WASHER/GR A 15 DIN125 ZO .....	24
11	163175	TURNTABLE .....	1	36	161643	WASHER/ROUND HI-TENS DIN6916 .....	8
12	163203	ROLLER .....	2	37	161636	WASHER/NORD-LOCK NL 12 STUCK .....	40
13	163174	SPRING SET .....	1	38	161676	LOCKWASHER S8 .....	12
14	160886	TENSION CYLINDER .....	2	39	161640	WASHER/GR A 10.5 ZO .....	4
15	163169	COVER .....	1	40	161669	LOCKWASHER S10 .....	12
16	163170	COVER .....	1	41	161663	WASHER/GR A 10.5 ZO DIN9021 .....	4
17	163172	COVER .....	1	42	161647	WASHER/ROUND HI-TENS 17 .....	58
18	163171	COVER .....	2	43	161635	WASHER/NORD-LOCK NL 10 STUCK .....	4
19	161070	TRACK ROLLER .....	8	44	161074	SEAL KIT .....	2
20	161417	PLUG .....	1	45	161075	SEAL KIT .....	2
21	161412	LUBRICATION FITTING .....	1	46	161076	SEAL KIT .....	8
22	161416	PROTECTION CAP .....	1	47	161207	SEAL KIT .....	1
23	651417	HB M16-2.0 X 80 C 10.9 ZO .....	30	48	160945	SEAL KIT .....	1
24	651416	HB M16-2.0 X 70 C 10.9 ZO .....	2	49	161208	SEAL KIT .....	1

**MODEL 802 MINI-EXCAVATOR  
UNDERCARRIAGE  
MODEL 802 — TRACK ROLLER**



**ET8002015**

\* Reference numbers marked with an asterisk (\*) indicate that the individual parts of the assembly are listed later in this section. Refer to the Table of Contents for locations of specific assemblies.

Ref. No.	Part No.	Description	Qty. Req.
1	163186	ROLLER.....	1
2	163187	SHAFT.....	1
3	163188	O-RING.....	1
4	163189	PLUG.....	1
5	163190	BUSHING.....	1
6	163191	O-RING.....	2
7	163192	SEAL.....	1
8	163193	COTTER PIN.....	1
9	163194	BRACKET.....	1
10	161075	SEAL KIT.....	1

**Thanks for your reading.**

**Please click here to download complete manual instantly.**

**And can also choose other manuals.**

**Feel free --->write to me with any questions.**

**Our service email:**

**manuals007@hotmail.com**