

680

All-Wheel-Steer Loader

Beginning Serial Number: 343010083

GEHL®

Form No.
918122

Revision C
08/06



PARTS MANUAL

INTRODUCTION

When ordering service parts, specify the correct part number, full description, quantity required, the unit model number and serial number. For your safety and continued proper operation, use only genuine GEHL service parts.

The model and serial number for this unit are on a tag located on a panel on the front of the cabin.

"Right" and "left" are determined from a position sitting on the seat and facing forward.

GEHL Company reserves the right to make changes or improvements in the design or construction of any part of the unit without incurring the obligation to install such changes on any previously delivered units.

Refer to the abbreviations table located on this page for the various fastener descriptions. Standard attaching hardware torque values are also provided on the inside back cover. Metric torque values shown in the illustrations are in Newton-meters and can be converted to foot-pounds by multiplying by 0.738.

Specific Reference Numbers, indicating a complete assembly, are circled in some illustrations. A small bag, pictured in some illustrations, indicates a seal kit (seals, o-rings, etc.). In the exploded view parts list, additional information may follow the Reference Number.

Serial Number breaks are indicated as follows:

(SN > XXXXX) - indicates Serial Numbers up to and including XXXXX.

(SN YYYYYY >) - indicates Serial Numbers YYYYYY and after.

Unless otherwise specified, all cap screws and bolts are Grade 8.8, cadmium or zinc plated.

NOTE: *The following abbreviations may be used herein:*

ASSD.....	Assembled
ASSY.....	Assembly
CB.....	Carriage Bolt
CP.....	Cotter Pin
CS.....	Cap Screw (Hexagon Head)
FHCS.....	Flat Head Cap Screw
GR.....	Grade
HB.....	Hex Bolt
HLN.....	Hex Lock Nut
HN.....	Hex Nut
HP.....	High Pressure
INS.....	Insert
LN.....	Lock Nut
LT.....	Left
LW.....	Lock Washer
M.....	Metric
MM/mm.....	Millimeter
RT.....	Right
SHCS.....	Socket Head Cap Screw
SLTD.....	Slotted
SN.....	Serial Number or Slotted Nut

TABLE OF CONTENTS

Introduction.....	Inside Front Cover	Hydraulics Installation - Boom.....	43
Table of Contents.....	1	Hydraulics Installation - Hose Burst.....	44
Decal Locations	2	Auxiliary Control Circuit.....	46
Engine Mounting	5	Control Lever Console.....	47
Cylinder Head.....	6	Control Valve.....	48
Engine Block.....	7	Instrument Panel	50
Engine Lubrication	8	Tilt Cylinder.....	52
Injection System	9	Lift Cylinder	53
Engine Accessories	10	Pilot Valve - Float Position.....	54
Air Filter	11	Lights	55
Exhaust Components	12	Battery.....	56
Fuel Tank.....	13	Wiring Harnesses.....	57
Throttle Pedal.....	14	Main Harness	58
Hydraulic Pump.....	15	Wiring Harness - Cab	61
Hydraulic Motor -12.5 mph (25 km/h)	16	Wiring Harness - Steering Column.....	64
Hydraulic Motor - 25 mph (40 km/h)	17	Wiring Harness - Arm Rest	65
Hydraulics Installation - Drive	18	Wiring Harness - Arm Rest (Option).....	68
Hydraulics Installation - High-Speed Gear	22	Wiring Harness - Work Lights.....	70
Oil Cooler	23	Tires	71
Oil Tank.....	24	Frame/Counterweights.....	72
Axles	25	Trim and Engine Cover.....	73
Front Axle.....	26	Wheel Covers - Trim	74
Steering (Front Axle).....	27	Loader Unit.....	75
Locking Differential (Front Axle)	28	Cabin.....	76
Axle Shaft (Front Axle).....	29	Cabin Door - Left.....	78
Wheel Hub & Brakes (Front Axle).....	30	Cabin Door - Right	79
Rear Axle.....	31	Cabin Trim.....	80
Steering (Rear Axle)	32	Quickhitch Assembly.....	81
Locking Differential (Rear Axle).....	33	Operator's Seat - Upper	82
Axle Shaft (Rear Axle)	34	Operator's Seat - Lower.....	83
Wheel Hub (Rear Axle)	35	Operator's Seat - Attachments.....	84
Gearbox - 12.5 mph (20 km/h)	36	Heater.....	85
Gears - 12.5 mph (20 km/h).....	37	Air Conditioner	86
Differential Lock - Hydraulics.....	38	Tools	88
Service Brake - Hydraulics	39	Buckets.....	89
Parking Brake	40	Pallet Forks (48").....	90
Hydraulics Installation - Steering	41	Alphabetical Index.....	91
Hydraulics Installation - Pilot Valve	42	Numerical Index	93

DECAL LOCATIONS

GENERAL INFORMATION

Decal location information is provided to assist in the proper selection and application of new decals, in the event the original decals become damaged or the machine is repainted. Refer to the listing for the illustration reference number, part number, description and quantity of each decal provided in the kit. Refer to the appropriate illustrations for replacement locations.

To ensure proper selection of the correct replacement decals, compare all of the various close-up location drawings to your machine before starting to refinish the unit. Then circle each decal shown (applicable to your machine) while checking off its part number in the listing. After you have verified all the decals needed for replacement, place any extra unnecessary decals aside for disposal.

NOTE: Refer to the *SAFETY* chapter of the *Operator's Manual* for the specific information provided on all of the various safety decals furnished in the decal kit.

NEW DECAL APPLICATION

Surfaces **MUST** be free from dirt, dust, grease and other foreign material before applying the new decal. To apply, remove the smaller portion of the decal backing paper and apply this part of the exposed adhesive backing to the clean surface while maintaining proper position and alignment. Peel the other portion of the backing paper off slowly while applying hand pressure to smooth out the decal surface.

PAINT NOTICE

Use this list to order paint for refinishing:

167768	4 qts. AWS Yellow (GEHL)
167758	4 qts. Charcoal Gray (GEHL)
167774	4 qts. Dark Gray (GEHL)
167769	6 (12.8 oz. Spray Cans) AWS Yellow (GEHL)
167775	6 (12.8 oz. Spray Cans) Dark Gray (GEHL)
167760	6 (12.8 oz. Spray Cans) Charcoal Gray (GEHL)

The decal kit for the model 680 All-Wheel-Steer Loader is listed below:

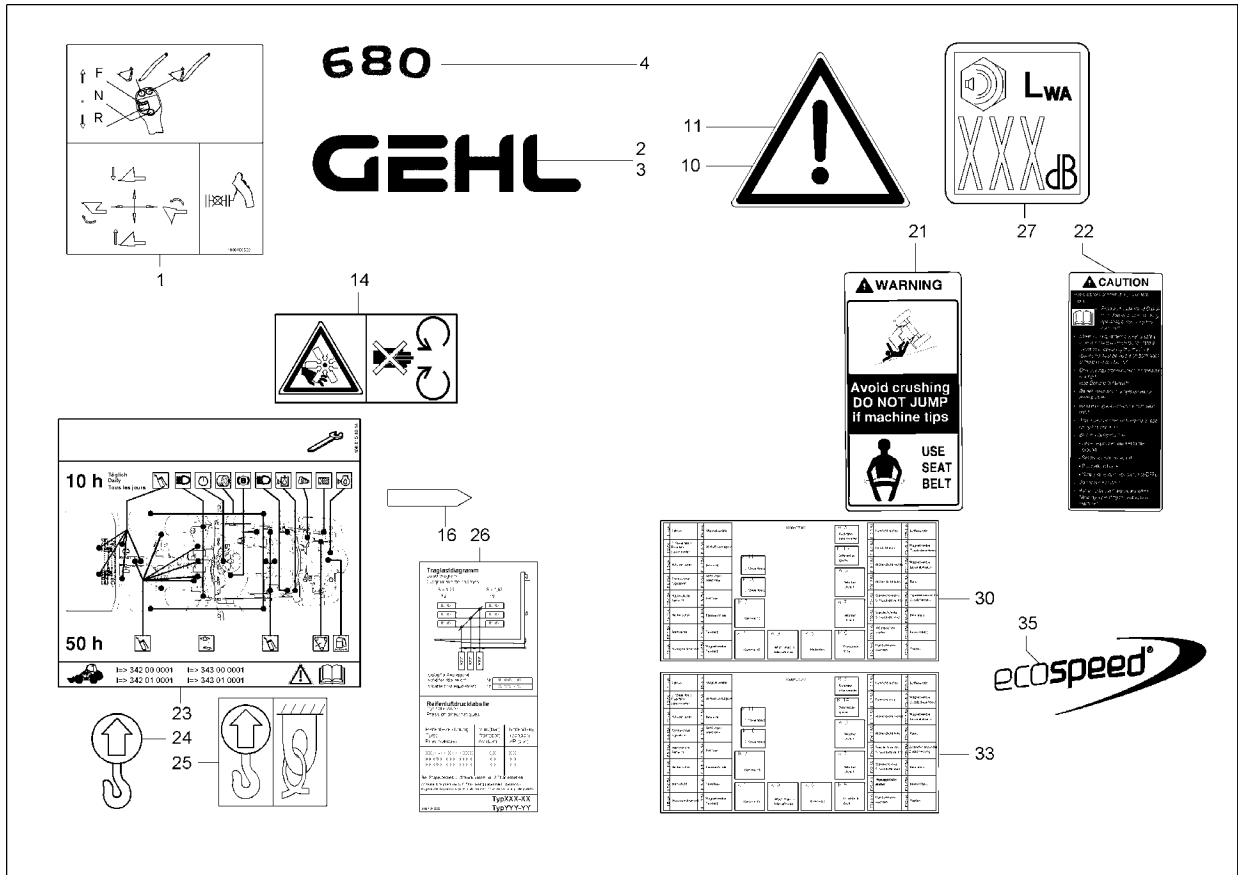
Ref. No.	Part No.	Description & Quantity
	208383	Decal Kit - 680
1	209871	Joystick Controls
2	183962	GEHL - 6.00 x 25.47 (2 Places)
3	183963	GEHL - 3.75 x 15.92
4	174063	680 (2 Places)
10	0004355533	Safety Alert Symbol - Small
	0004355833	Safety Alert Symbol - Large (2 Places)
14	209451	WARNING - Moving Parts
16	0004351144	Arrow (2 Places)
21	0004359734	WARNING - Use Seat Belt
22	0004359834	CAUTION - Avoid Danger of Serious Injury
23	208614	Maintenance
24	209716	Lift Point (4 Places)
25	209717	Tiedown Point (3 Places)
26	208711	Load Chart
27	208712	Information - Sound Power Level Compliance
30	208714	Fuse Chart
33	208717	Fuse Chart
35	208869	Ecospeed



CAUTION

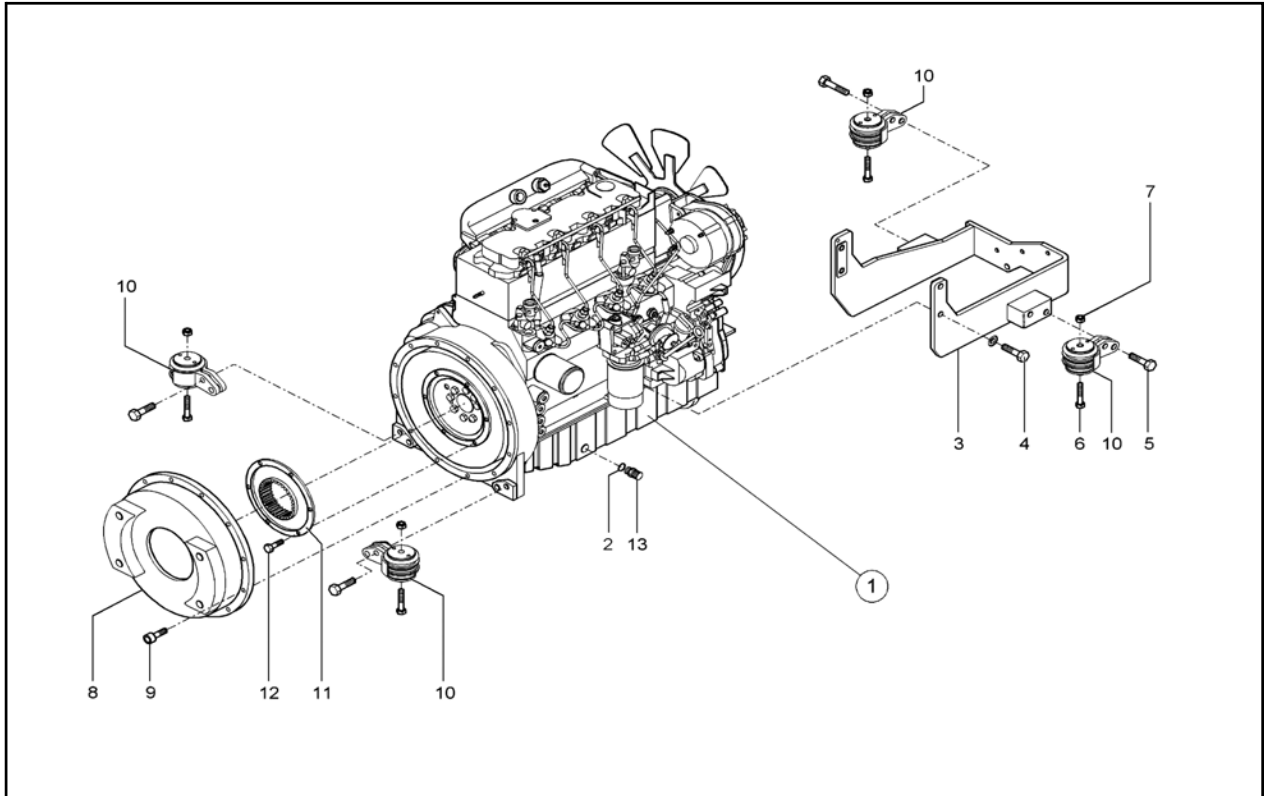
ALWAYS follow safety precautions on decals. Replace the decals if they are damaged, or if the unit is repainted. If repainting, **BE SURE** all applicable decals are affixed to your unit.

DECAL LOCATIONS



NOTES

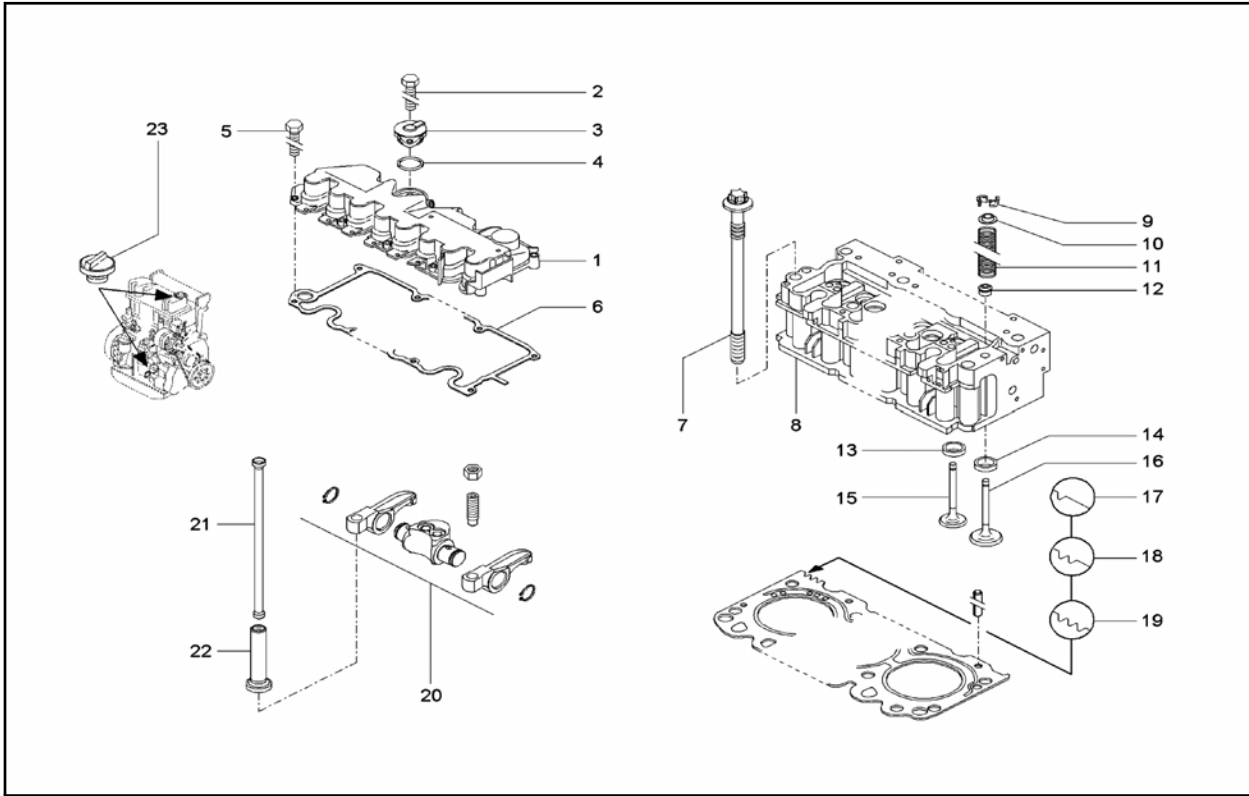
680 - ENGINE MOUNTING
1000158754



Ref. No.	Part No.	Description	Qty.	Ref. No.	Part No.	Description	Qty.
1	205423	ENGINE (SN 343010157 >)	1	7	179793	NUT	4
	207967	ENGINE (SN > 343010156)	1	8	207577	FLANGE	1
2	7593641029	SEAL RING A 18X24	1	9	651473	SHCS M10-1.25X25 F8.8 ZY	10
3	208479	ENGINE SUPPORT	1	10	208867	ENGINE MOUNTING	4
4	7236677952	HEX SCREW M14X35-8.8 A2C	4	11	207576	COUPLING	1
5	7234678147	HEX SCREW M14X55-10.9	8	12	656094	CS M8-1.25X30 C8.8 ZO	6
6	651403	HB M12-1.75X100 C8.8 ZY	4	13	0003618484	DRAIN COUPLING M18X1.5	1

680 - CYLINDER HEAD

1000108134

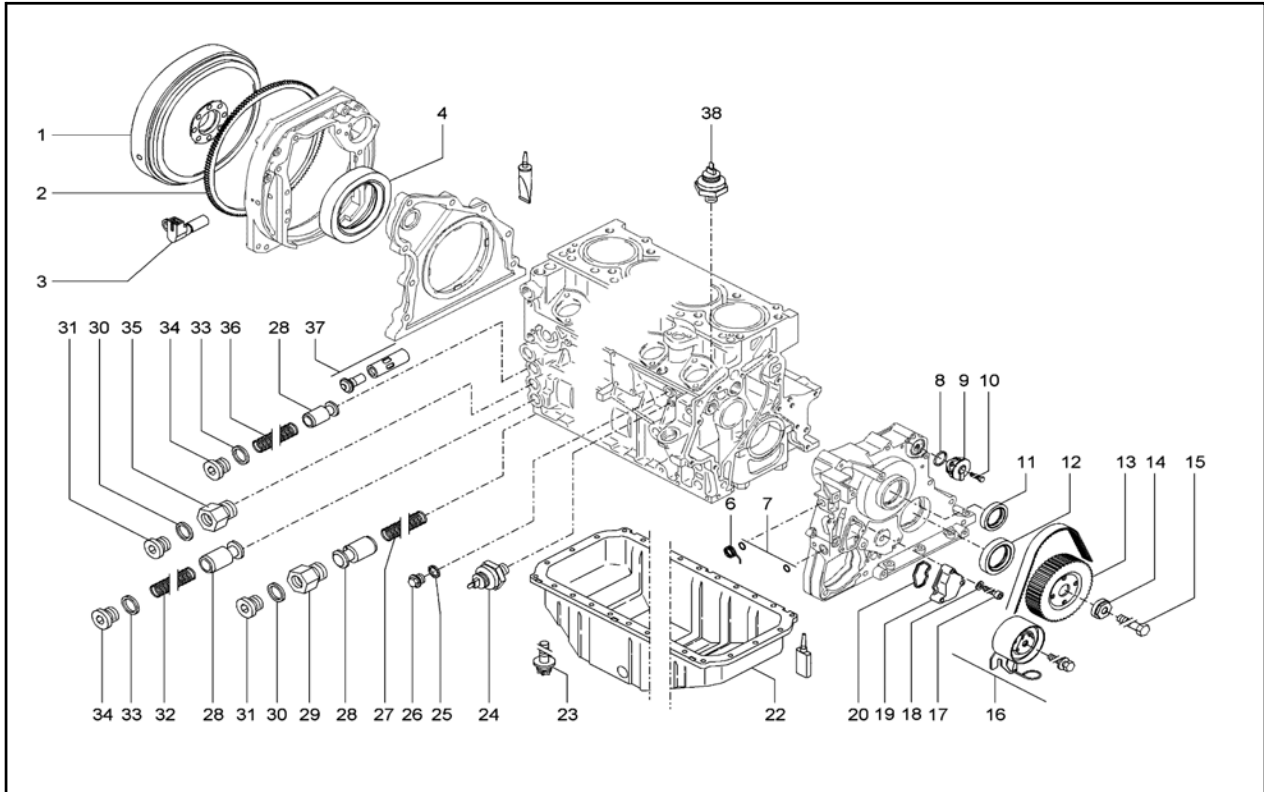


Ref. No.	Part No.	Description	Qty.
1	207879	VALVE COVER	1
2	208814	HEX SCREW	1
3	207880	VALVE	1
4	0000802764	O-RING 45X4	1
5	208815	HEX SCREW	10
6	207878	VALVE COVER GASKET	1
7	0000802651	CYLINDER HEAD BOLT	10
8	207883	CYLINDER HEAD	1
9	133322	VALVE CONE	16
10	0000801929	VALVE STEM SEAL	8
11	0000802658	COMPRESSION SPRING	8
12	208849	SPRING CAP	8

Ref. No.	Part No.	Description	Qty.
13	208861	VALVE SEAT	4
14	207875	VALVE SEAT	4
15	208862	EXHAUST VALVE	4
16	207885	INTAKE VALVE	4
17	207887	CYLINDER HEAD GASKET	1
18	207888	CYLINDER HEAD GASKET	1
19	207889	CYLINDER HEAD GASKET	1
20	0000801953	ROCKER ARM BRACKET	4
21	0000801918	PUSH ROD	8
22	0000804268	VALVE TAPPET	8
23	0000802648	LOCK	1

680 - ENGINE BLOCK

1000131072



Ref. No.	Part No.	Description	Qty.	Ref. No.	Part No.	Description	Qty.
1	208864	FLYWHEEL	1	20	0000802742	SEAL	1
2	208845	RING GEAR	1	22	0000802897	OIL PAN	1
3	207890	RPM SENSOR	1	23	0000802645	TORX-HEAD SCREW M8X16	26
4	0000801363	ROTARY SHAFT SEAL	1	24	208826	OIL PRESSURE SWITCH	1
6	207977	SPRING	1	25	208807	SEAL RING	1
7	0000802741	O-RING	2	26	208810	PLUG	1
8	208832	SEAL RING	1	27	0000802676	COMPRESSION SPRING	1
9	0000802765	BREATHER VALVE	1	28	0000802673	VALVE	3
10	208814	HEX SCREW	1	29	208843	FITTING	1
11	0000801368	ROTARY SHAFT SEAL	1	30	208806	SEAL RING	2
12	0000801369	ROTARY SHAFT SEAL	1	31	208817	PLUG	2
13	207978	GEAR	1	32	0000802675	COMPRESSION SPRING	1
14	0000802659	WASHER	1	33	208809	SEAL RING	2
15	0000801898	HEXAGON HEAD SCREW 14X1.5X110	1	34	208797	PLUG	2
16	209126	REPAIR KIT/TIMING BELT	1	35	208842	FITTING	1
17	208824	SCREW	3	36	0000802674	COMPRESSION SPRING	1
18	208799	SPACER	3	37	0000803948	THERMOSTAT	1
19	208850	COVER	1	38	207629	TEMPERATURE SENSOR	1

Thanks for your reading.

Please click here to download complete manual instantly.

And can also choose other manuals.

Feel free --->write to me with any questions.

Our service email:

manuals007@hotmail.com