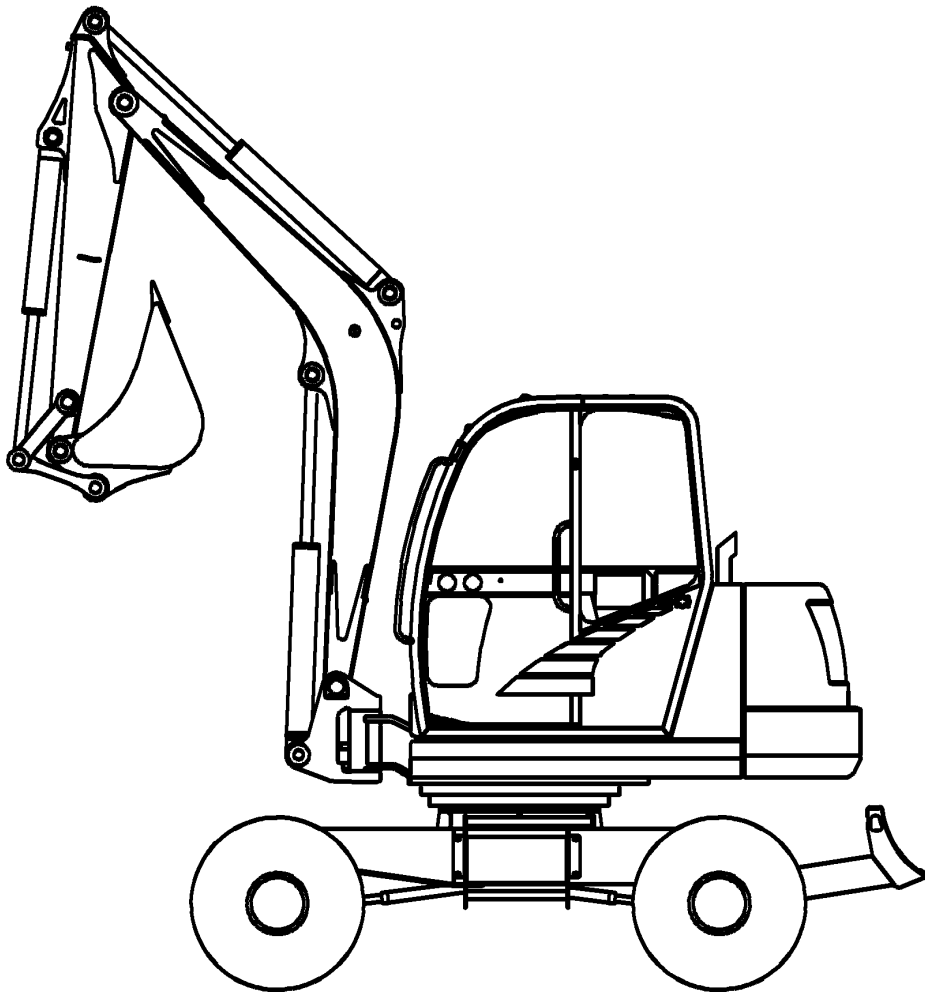


652

Form No.
908544

Mini-excavator



PARTS MANUAL

GEHL CONSTRUCTION

Introduction

When ordering service parts, specify the correct part number, full description, quantity required, the unit model number and serial number.

The Mini-excavator model and serial numbers are on a plate located on the lower left front outer side of the cabin (from the driver's perspective).

OUR Company reserves the right to make changes or improvements in the design or construction of any part of the unit without incurring the obligation to install such changes on any previously delivered units.

NOTE: *On original tire replacement, company policy prohibits the sale of replacement tires for all OUR machinery. Replacement Wheel Sets are available and tire size information is called out with the Wheel Sets to facilitate replacement tire selection. ALL REPLACEMENT TIRES MUST BE PURCHASED LOCALLY.*

To ensure continued safe operation, replace damaged or worn-out parts with genuine Factory service parts, BEFORE attempting to operate this equipment.

Refer to the abbreviations table located on this page for the various fastener descriptions.

In the exploded view parts list, Reference numbers marked with an asterisk (*) indicate that the individual parts of the assembly are listed later in that section. Refer to the Table of Contents for locations of specific assemblies.

NOTE: *The following abbreviations may be used herein:*

AR	– As Required
ASSD	– Assembled
ASSY	– Assembly
CB	– Carriage Bolt
CCW	– Counterclockwise
CP	– Cotter Pin
CS	– Cap Screw (Hexagon Head)
CTR	– Center
CW	– Clockwise
DEG	– Degree
DIA	– Diameter
FCHC	
FCS	– Flanged Cap Screw
FHMS	– Flat Head Machine Screw
FL	– Flanged
FLN	– Flanged Lock Nut (Hexagon)
FLS	– Flanged Lock Screw (Hexagon)
FW	– Flat Washer
GA	– Gauge
GR	– Grade
HD	– Hard or Head
HLN	– Hex Lock Nut
HJN	– Hex Jam Nut
HN	– Hex Nut
HS	
INCL	– Includes
INS	
JT	– Joint
LG	– Large
LH	– Left Hand
LN	– Lock Nut
LW	– Lock Washer
M	– Metric
MM/mm	– Millimeter
NF	– National Fine
PB	– Plow Bolt
PTO	– Power Take Off
RH	– Right Hand
RHMS	– Round Head Machine Screw
RPM	– Revolutions Per Minute
RT	– Right
SERR	– Serrated
SHCS	– Socket Head Cap Screw
SHSS	– Socket Head Set Screw
SN	– Serial Number or Slotted Nut
SQ	– Square
SQSS	– Square Head Set Screw
T	– Tooth or Teeth
TFS	– Thread Forming Screw
THMS	– Truss Head Machine Screw
THRD	– Thread
WLDMT	– Weldment
ZO	– Zinc Oxide Plating
#	– Number

Table of Contents

SECTION A: UNDERCARRIAGE5
UNDERCARRIAGE	6
MODEL 652 — UNDERCARRIAGE	6
MODEL 652 — PLANETARY STEERING AXLE	8
MODEL 652 — PLANETARY STEERING AXLE	9
MODEL 652 — PLANETARY STEERING AXLE	10
MODEL 652 — PLANETARY STEERING AXLE	11
MODEL 652 — PLANETARY STEERING AXLE	12
MODEL 652 — PLANETARY STEERING AXLE	14
MODEL 652 — PLANETARY STEERING AXLE	15
MODEL 652 — PLANETARY AXLE	16
MODEL 652 — PLANETARY AXLE	17
MODEL 652 — PLANETARY AXLE	18
MODEL 652 — PLANETARY AXLE	19
MODEL 652 — PLANETARY AXLE	20
SECTION B: DOZER BLADE21
DOZER BLADE	22
MODEL 652 — DOZER BLADE	22
SECTION C: CHASSIS23
CHASSIS	24
MODEL 652 — CHASSIS	24
MODEL 652 — CHASSIS COVERS	25
MODEL 652 — CHASSIS LUBRICATION	26
MODEL 652 — REAR WALL	27
MODEL 652 — COUNTERWEIGHT	28
MODEL 652 — HOOD	29
MODEL 652 — VALVE COVER	30
MODEL 652 — TANK COVER	32
MODEL 652 — HOSE COVER	33
SECTION D: BOOM35
BOOM	36
MODEL 652 — BOOM	36
MODEL 652 — STICK	37
MODEL 652 — BUCKET LINK	38
SECTION E: CABIN39
CABIN	40
MODEL 652 — CABIN MOUNTING	40
MODEL 652 — CABIN FRAME 1	41
MODEL 652 — CABIN FRAME 2	42
MODEL 652 — CABIN FRAME 3	43
MODEL 652 — CABIN CABLES	44
MODEL 652 — FRONT WINDSHIELD	45
MODEL 652 — CABIN WINDOWS	46
MODEL 652 — SLIDING SIDE WINDOW	47
MODEL 652 — CABIN DOOR	48
MODEL 652 — CABIN MATS	49

MODEL 652 — CAB HEATING	50
MODEL 652 — DRIVERS SEAT	51
SECTION F: DIESEL ENGINE53
DIESEL ENGINE	54
MODEL 652 — DIESEL ENGINE.....	54
MODEL 652 — DIESEL TANK	55
MODEL 652 — FUEL LINE	56
MODEL 652 — ACCELERATOR.....	57
MODEL 652 — ENGINE SUSPENSION	58
MODEL 652 — COOLING WATER RADIATOR.....	59
MODEL 652 — AIR INTAKE	60
MODEL 652 — EXHAUST	61
SECTION G: HYDRAULIC SYSTEM63
HYDRAULIC SYSTEM	64
MODEL 652 — HYDRAULIC PUMP ASSEMBLY	64
MODEL 652 — HYDRAULIC OIL TANK.....	65
MODEL 652 — HYDRAULIC OIL COOLER	66
MODEL 652 — SWIVEL JOINT.....	67
MODEL 652 — DRIVING MOTOR	68
MODEL 652 — HYDRAULIC PUMP ASSEMBLY	69
MODEL 652 — TURNING MOTOR.....	70
MODEL 652 — CONTROL VALVE.....	71
MODEL 652 — CONTROL VALVE.....	72
MODEL 652 — PILOT OIL SUPPLY UNIT.....	73
MODEL 652 — DISTRIBUTION BLOCK	74
MODEL 652 — SELECTION VALVE	75
MODEL 652 — DOZER BLADE VALVE	76
MODEL 652 — STABILIZER VALVE.....	77
MODEL 652 — SOLENOID VALVE	78
MODEL 652 — HAND BRAKE VALVE	79
MODEL 652 — BRAKE VALVE	80
MODEL 652 — ACCUMULATOR	81
MODEL 652 — ACCUMULATOR LOADING VALVE	82
MODEL 652 — PRIORITY VALVE	83
MODEL 652 — PILOT OPERATED CHECK VALVES	84
MODEL 652 — PILOT OPERATED CHECK VALVES	85
MODEL 652 — PILOT OPERATED CHECK VALVES	86
MODEL 652 — STEERING.....	87
MODEL 652 — BOOM CYLINDER.....	88
MODEL 652 — STICK CYLINDER	89
MODEL 652 — BUCKET CYLINDER.....	90
MODEL 652 — BOOM OFFSET CYLINDER	91
MODEL 652 — DOZER BLADE CYLINDERS	92
MODEL 652 — STEERING CYLINDERS	93
MODEL 652 — STABILIZER CYLINDERS	94
MODEL 652 — CYLINDER	95
MODEL 652 — HYDRAULIC PUMP INSTALLATION.....	96
MODEL 652 — HYDRAULIC OIL COOLER INSTALLATION	97
MODEL 652 — DRIVE MOTOR HYDRAULICS	98
MODEL 652 — TURNING MOTOR INSTALLATION.....	99

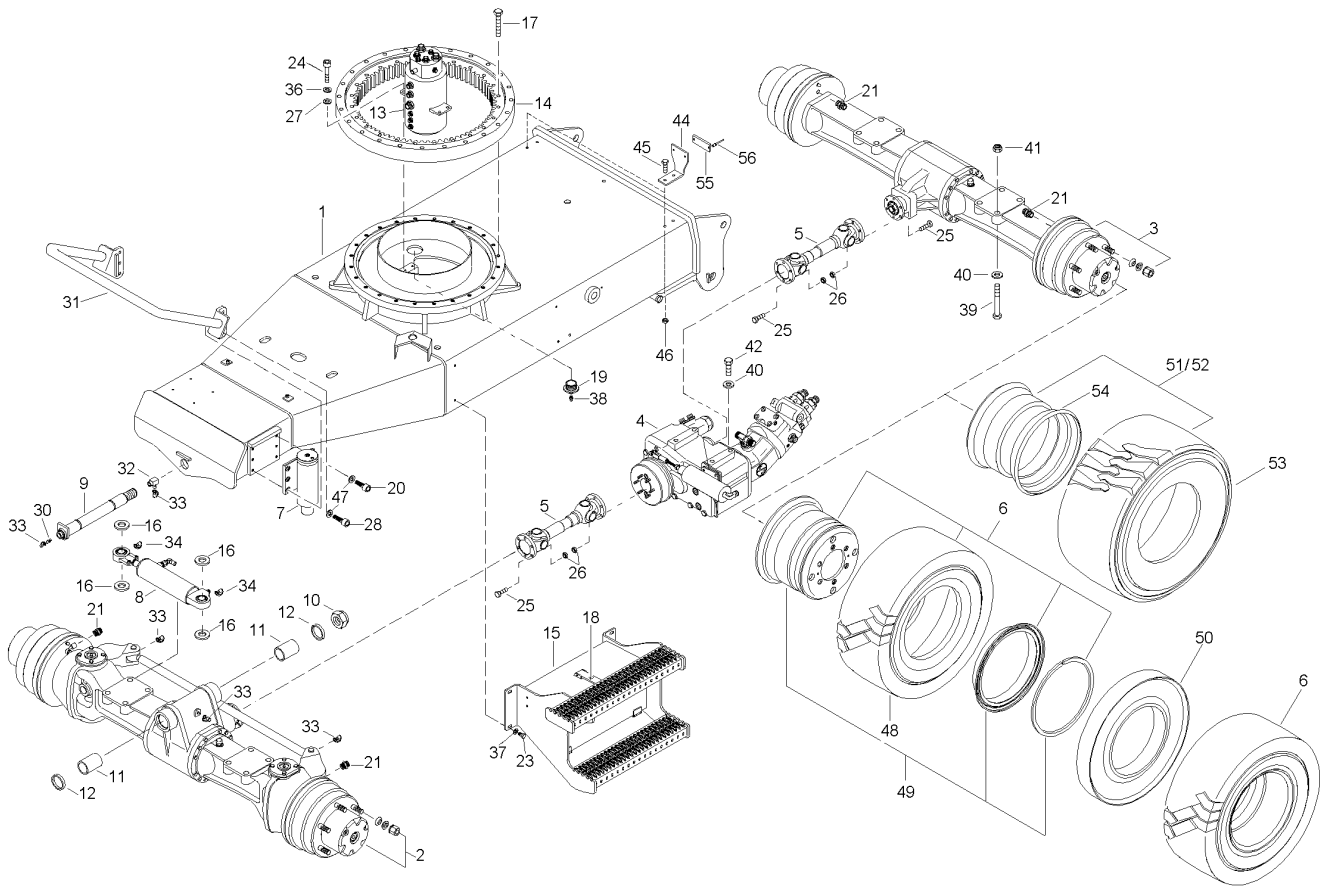
MODEL 652 — CONTROL VALVE INSTALLATION.....	100
MODEL 652 — PILOT OIL SUPPLY UNIT INSTALLATION.....	101
MODEL 652 — BOOM OFFSET CYLINDER INSTALLATION.....	102
MODEL 652 — DOZER BLADE CYLINDER INSTALLATION.....	103
MODEL 652 — BOOM INSTALLATION.....	104
MODEL 652 — CLAM SHELL MOUNTING.....	105
MODEL 652 — PILOT OPERATED CHECK VALVE INSTALLATION.....	106
MODEL 652 — STABILIZER CYLINDER INSTALLATION.....	107
MODEL 652 — TRANSFER CASE INSTALLATION.....	108
MODEL 652 — HAND BRAKE INSTALLATION.....	109
MODEL 652 — FOOT BRAKE INSTALLATION.....	110
MODEL 652 — STEERING INSTALLATION.....	111
MODEL 652 — PILOT OPERATED CHECK VALVE INSTALLATION.....	112
MODEL 652 — PILOT OPERATED CHECK VALVE INSTALLATION.....	113
SECTION H: ELECTRICAL SYSTEM.....	115
ELECTRICAL SYSTEM.....	116
MODEL 652 — CONTROL BOARD.....	116
MODEL 652 — CONTROL BOARD.....	117
MODEL 652 — ELECTRICAL INSTALLATION.....	118
MODEL 652 — DIESEL ENGINE ELECTRICAL INSTALLATION.....	119
MODEL 652 — RELAY BOX INSTALLATION.....	120
MODEL 652 — HEADLIGHTS.....	121
MODEL 652 — REAR LIGHTS.....	122
MODEL 652 — RELAY BOX.....	123
MODEL 652 — HORN.....	124
MODEL 652 — WORKING HEADLIGHTS.....	125
MODEL 652 — BATTERY INSTALLATION.....	126
SECTION I: TOOLS.....	127
TOOLS.....	128
MODEL 652 — TOOLS.....	128
SECTION J: SAFETY ACCESSORIES.....	129
SAFETY ACCESSORIES.....	130
MODEL 652 — SAFETY ACCESSORIES.....	130
SECTION K: DECALS.....	131
DECALS.....	132
MODEL 652 — DECALS.....	132

SECTION A: UNDERCARRIAGE

UNDERCARRIAGE 6
MODEL 652 — UNDERCARRIAGE 6
MODEL 652 — PLANETARY STEERING AXLE 8
MODEL 652 — PLANETARY STEERING AXLE 9
MODEL 652 — PLANETARY STEERING AXLE 10
MODEL 652 — PLANETARY STEERING AXLE 11
MODEL 652 — PLANETARY STEERING AXLE 12
MODEL 652 — PLANETARY STEERING AXLE 14
MODEL 652 — PLANETARY STEERING AXLE 15
MODEL 652 — PLANETARY AXLE..... 16
MODEL 652 — PLANETARY AXLE..... 17
MODEL 652 — PLANETARY AXLE..... 18
MODEL 652 — PLANETARY AXLE..... 19
MODEL 652 — PLANETARY AXLE..... 20

SECTION A: UNDERCARRIAGE

MODEL 652 MINI-EXCAVATOR UNDERCARRIAGE MODEL 652 — UNDERCARRIAGE



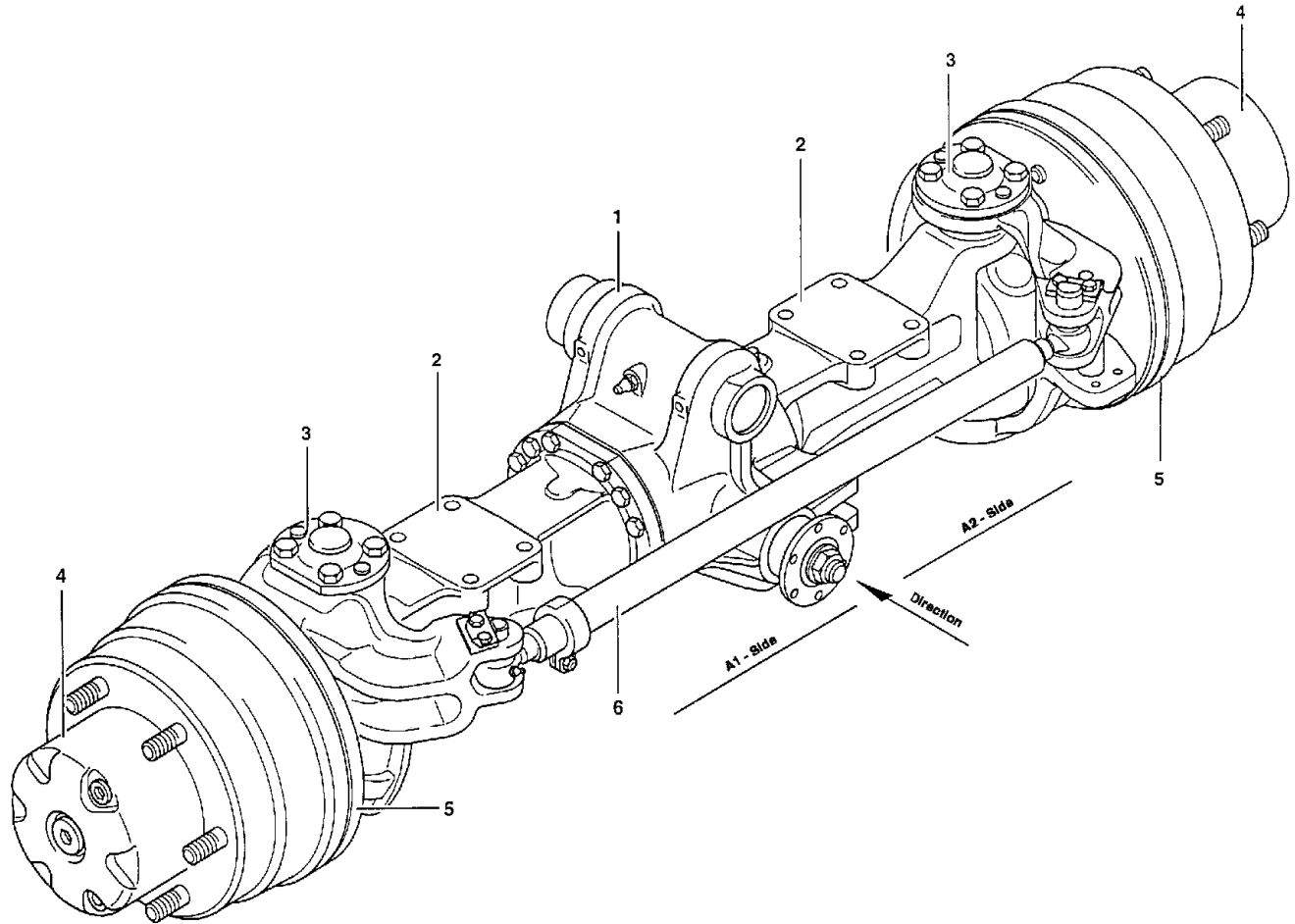
ET6520100

* Reference numbers marked with an asterisk (*) indicate that the individual parts of the assembly are listed later in this section. Refer to the Table of Contents for locations of specific assemblies.

**MODEL652 MINI-EXCAVATOR
UNDERCARRIAGE
MODEL 652 — UNDERCARRIAGE**

Ref. No.	Part No.	Description	Qty. Req.	Ref. No.	Part No.	Description	Qty. Req.
1	162904	UNDERCARRIAGE	1	28	651485	SHCS HS M12-1.7 X 45 10.9 ZO D912	6
2	163218	PLANETARY STEERING AXLE	1	30	161412	LUBRICATION FITTING	1
3	163219	RIGID PLANETARY AXLE	1	31	162907	GRAB BAR	1
4	162938	GEAR BOX	1	32	161420	LUBRICATION FITTING	1
5	162914	DRIVE SHAFT	2	33	162928	PROTECTION CAP	5
6	162908	RIM AND TIRE ASSEMBLY (DUAL)	8	34	161416	PROTECTION CAP	2
7	163230	STABILIZER CYLINDER	2	36	161635	WASHER/NORD-LOCK NL 10 STUCK	4
8	163265	STEERING CYLINDER	1	37	161641	WASHER/GR 10.5 ZO	8
9	163279	PIN	1	38	161412	LUBRICATION FITTING	1
10	163025	NUT	1	39	651418	HB M16-2.0 X 90 C 10.9 ZO	8
11	163223	BUSHING	2	40	161647	WASHER/ROUND HI-TENS 17	12
12	163224	SEAL	2	41	651451	HLN INS M16-2.0 ZO	8
13	162931	SWIVEL JOINT	1	42	651415	CS M16-2.0 X 45 C 10.9 ZO	4
14	162615	TURNTABLE	1	44	162945	BRACKET	2
15	162906	FOOTBOARD	2	45	656105	CS M8-1.2 X 25 C 8.8 ZO	4
16	161655	WASHER	4	46	656048	HN M8-1.2 ZO	4
17	651418	HB M16-2.0 X 90 C 10.9 ZO	24	47	161670	LOCKWASHER S12	18
18	162944	LOCK	1	48	162910	TIRE	8
19	161417	PLUG	1	49	162911	RIM ASSEMBLY	8
20	656148	SHCS HS 12-1.75X40 10.9 ZO	12	50	162909	RING	4
21	163123	FITTING	4	51	162915	WHEEL, L, SINGLE (RIM AND TIRE)	2
23	651393	CS M10-1.5 X 25 C 8.8 ZO	8	52	162916	WHEEL, R, SINGLE (RIM AND TIRE)	2
24	651474	SHCS HS M10-1.2 X 25 10.9 ZO D912	4	53	162917	TIRE	4
25	651431	CS M8-1.2 X 25 F 10.9 ZO	18	54	162918	RIM	4
26	161679	HLN INS M8 8 ZO D985	24	55	160644	REFLECTOR	2
27	161661	WASHER/GR A 8.4 ZO	4	56	161627	RIVET/BLIND A4 X 12 DIN7337	4

**MODEL 652 MINI-EXCAVATOR
 UNDERCARRIAGE
 MODEL 652 — PLANETARY STEERING AXLE**



ET6520110

* Reference numbers marked with an asterisk (*) indicate that the individual parts of the assembly are listed later in this section. Refer to the Table of Contents for locations of specific assemblies.

Ref. No.	Part No.	Description	Qty. Req.
1	163221	DIFFERENTIAL	1
2	...	REFER TO FACTORY	1
3	...	REFER TO FACTORY	1
4	...	REFER TO FACTORY	1
5	...	REFER TO FACTORY	1
6	...	REFER TO FACTORY	1

Thanks for your reading.

Please click here to download complete manual instantly.

And can also choose other manuals.

Feel free --->write to me with any questions.

Our service email:

manuals007@hotmail.com