

GEHL®

Form No.
908542
Revision B
July 2007

Model 502

Compact Excavator

Serial Number AA01022 to AA01890



Parts Manual

INTRODUCTION

When ordering service parts, specify the correct part number, full description, quantity required, the unit model number and serial number. For your safety and continued proper operation, use only genuine GEHL service parts.

The model and serial number for this unit are on a tag located on a panel on the front of the cab.

“Right” and “left” are determined from a position sitting on the operator’s seat and facing forward.

GEHL Company reserves the right to make changes or improvements in the design or construction of any part of the unit without incurring the obligation to install such changes on any previously delivered units.

Refer to the abbreviations table located on this page for special parts descriptions. Standard attaching hardware torque values are also provided near the back of this manual. Metric torque values shown in the illustrations are in Newton-meters and are converted to foot-pounds by multiplying by 0.738.

Specific reference numbers, indicating a complete assembly, are circled in some illustrations. A small bag, pictured in some illustrations, indicates a seal kit (seals, o-rings, etc.). In the exploded view parts list, additional information may follow the Reference Number.

Serial number breaks are indicated as follows:

- (SN 999 and before) - indicates serial numbers up to and including 999.
- (SN 1000 - 2000) - indicates serial numbers between 1000 and 2000.
- (SN 999 and up) - indicates serial numbers including 999 and after.

Serial number exceptions and inclusion are indicated as follows:

- (SN 999 and before except 997) - indicates serial numbers up to and including 999, EXCEPT 997.
- (SN 1000 - 2000 except 1996 including 997) - indicates serial numbers between 1000 and 2000, INCLUDING 997 EXCEPT 1996.

- (SN 2001 and up including 1996) - indicates serial numbers including 2001 and after, INCLUDING 1996.

Unless otherwise specified, all cap screws and bolts are Grade 8.8, cadmium or zinc plated.

NOTE: *The following abbreviations may be used herein:*

ASSD.....	Assembled
ASY.....	Assembly
ASSY.....	Assembly
AR.....	As Required
CB.....	Carriage Bolt
CP.....	Cotter Pin
CS.....	Cap Screw (Hexagon Head)
CYL.....	Cylinder
DIA.....	Diameter
FHCS.....	Flat Head Cap Screw
GR.....	Grade
HB.....	Hex Bolt
HLN.....	Hex Lock Nut
HN.....	Hex Nut
HP.....	High Pressure
HYD.....	Hydraulic
INS.....	Insert
LH.....	Left Hand
LN.....	Lock Nut
LT.....	Left
LW.....	Lock Washer
M.....	Meter or Meters
MM/mm.....	Millimeter
NPT.....	National Pipe Threaded
NSS.....	Not Sold Separately
RH.....	Right Hand
RT.....	Right
SHCS.....	Socket Head Cap Screw
SLTD.....	Slotted
SN.....	Serial Number or Slotted Nut
SQ.....	Square
W/.....	With
W/O.....	Without

TABLE OF CONTENTS

Introduction.....	i	Fuel Tank	54
Table of Contents.....	1	fuel tank	54
Decal Locations	3	Fuel System.....	55
Undercarriage, Rubber Track.....	8	Throttle Assembly.....	56
Undercarriage, Steel Track	9	Cooling System.....	57
Supporting Roller.....	11	Air Intake System	58
Track Tensioner, Rubber Track	12	Exhaust System.....	59
Track Tensioner, Rubber & Steel Tracks ..	13	Hydraulic Pump Drive	60
Bottom Roller	14	Hydraulic Tank	61
Dozer Blade	15	Oil Cooler	62
Chassis	16	Drive Motor	63
Chassis Covers.....	17	Swivel Joint.....	64
Chassis Lubrication.....	18	Hydraulic Pump External Parts.....	65
Rear Plate.....	19	Hydraulic Pump Internal Parts.....	66
Counterweight.....	20	Swivel Drive	67
Engine Hood	21	Valve Block 1	68
Valve Cover	22	Valve Block 2	69
Hose Cover	23	Pilot Oil Supply Unit	70
Hydraulic Tank Cover	24	Valve Block	71
Boom.....	25	Manifold Block.....	72
Dipper Arm	26	Reversing Valve.....	73
Connecting Link	27	Hand Levers.....	74
Cab Mounting	28	Dozer Blade Valve.....	75
Cab (Cont.).....	29	Pilot Valve Travel.....	76
Cab (Cont.).....	30	Auxiliary Hydraulics Pilot Valve	77
Cab (Cont.).....	31	4/3 Valve (Option).....	78
CAB (Cont.).....	33	Solenoid Valve (Option).....	79
Cab (Cont.).....	34	ISO/SAE Pattern Valve (Option).....	80
Wiring Harness	35	Boom Cylinder.....	81
Front Window	36	Dipper Arm Cylinder	82
Cab Windows.....	37	Bucket Cylinder	83
Cab Sliding Window.....	38	Swivel Cylinder	84
Cab Door.....	39	Dozer Blade Cylinder	85
Cab Isolation Mats	40	Hydraulic Pump Hose Installation	86
Heater.....	41	Oil Cooler Hose Installation	87
Operator's Seat	42	Turntable Drive Unit Hose Installation	88
Diesel Engine	43	Travel Motor Hose Installation.....	89
Engine Mounts.....	44	Valve Hose Installation.....	90
Cylinder Head	45	Pilot Oil Supply Hose Installation	91
Cylinder Block.....	46	Swivel Cylinder Hose Installation	92
Seal Crankshaft.....	47	Dozer Blade Cylinder Hose Installation	93
Oil Pan	48	Boom Hose Installation	94
Camshaft	49	Hand Levers Hose Installation.....	95
Crankshaft & Pistons	50	ISO/SAE Valve Hose Installation (Option)	96
Oil Lubrication System	51	Pilot Pressure Hose Installation	97
Cooling System.....	52	Electrical Auxiliary Hose Installation (Option)	98
Fuel Injection System	53		

TABLE OF CONTENTS

Engine Wire Harness	99
Left Console Wire Harness	100
Right Console Wire Harness	101
Relay Box	102
Relay Box Installation	103
Chassis Headlight	104
Boom Headlight	105
Battery	106
Horn	107
Tools	108
Numerical Index	112

DECAL LOCATIONS

GENERAL INFORMATION

Decal location information is provided to assist in the proper selection and application of new decals, in the event the original decals become damaged or the machine is repainted. Refer to the listing for the illustration reference number, part number, description and quantity of each decal provided in the kit. Refer to the appropriate illustrations for replacement locations.

To ensure proper selection of the correct replacement decals, compare all of the various closeup location drawings to your machine before starting to refinish the unit. Then circle each decal shown (applicable to your machine) while checking off its part number in the listing. After you have verified all the decals needed for replacement, place any extra unnecessary decals aside for disposal.

NOTE: Refer to the *SAFETY* chapter of the *Operator's Manual* for the specific information provided on all of the various safety decals furnished in the decal kit(s).

NEW DECAL APPLICATION

Surfaces **MUST** be free from dirt, dust, grease and other foreign material before applying the new decal. To apply, remove the smaller portion of the decal backing paper and apply this part of the exposed adhesive backing to the clean surface while maintaining proper position and alignment. Peel the other portion of the backing paper off slowly while applying hand pressure to smooth out the decal surface.



CAUTION

ALWAYS follow safety precautions on decals. Replace the decals if they are damaged, or if the unit is repainted. If repainting, **BE SURE** all applicable decals are affixed to your unit.

PAINT NOTICE

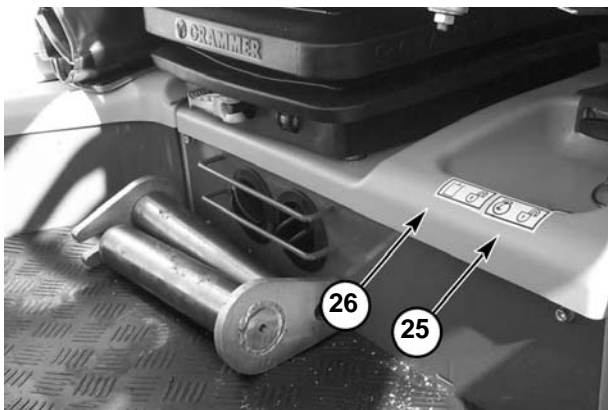
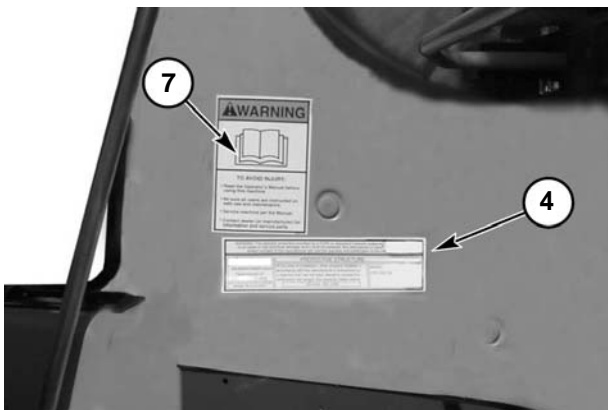
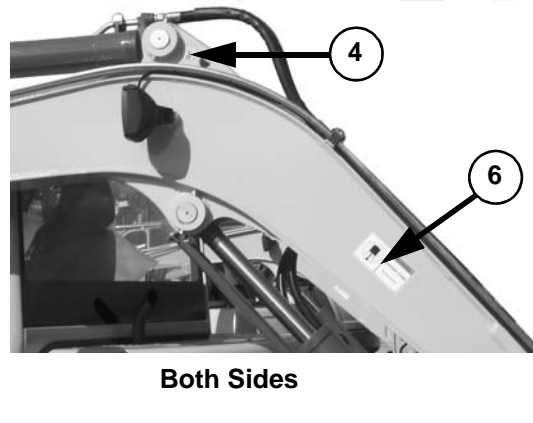
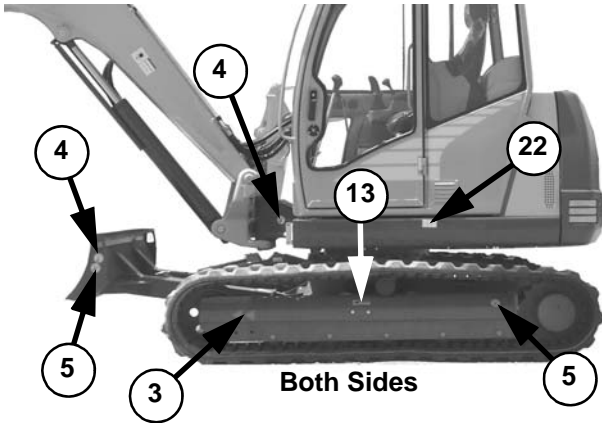
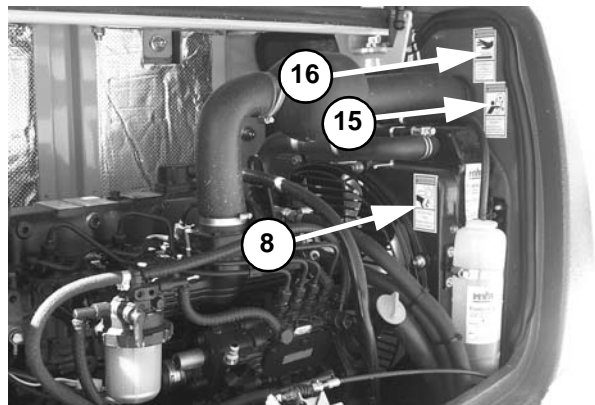
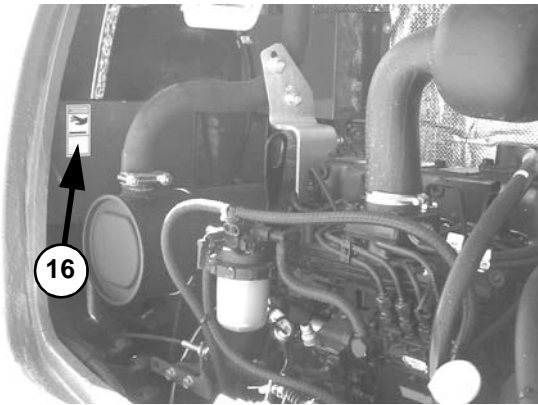
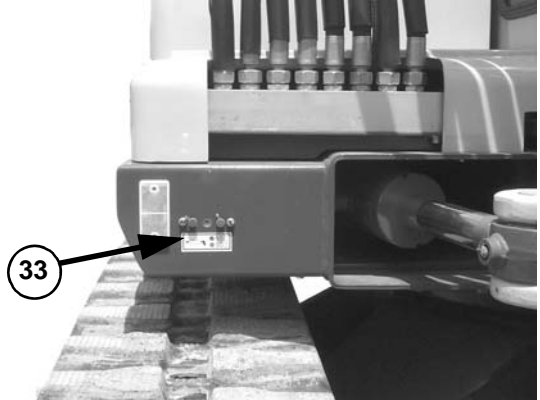
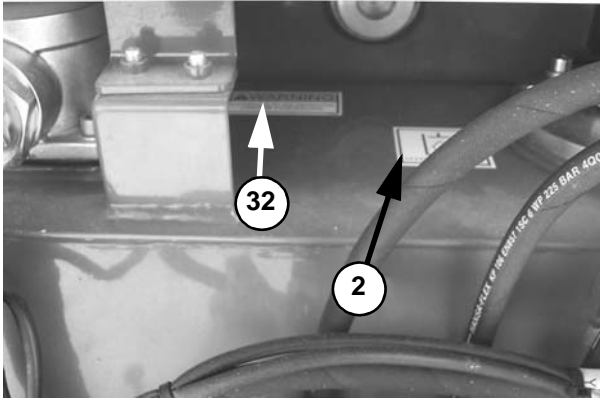
Use this list to order paint for refinishing:

167788	4 qts. Construction Yellow (GEHL)
167780	4 qts. Light Gray (GEHL)
167774	4 qts. Dark Gray (GEHL)
167789	6 (12.8 oz. Spray Cans) Yellow (GEHL)
167775	6 (12.8 oz. Spray Cans) Dark Gray (GEHL)
167781	6 (12.8 oz. Spray Cans) Light Gray (GEHL)

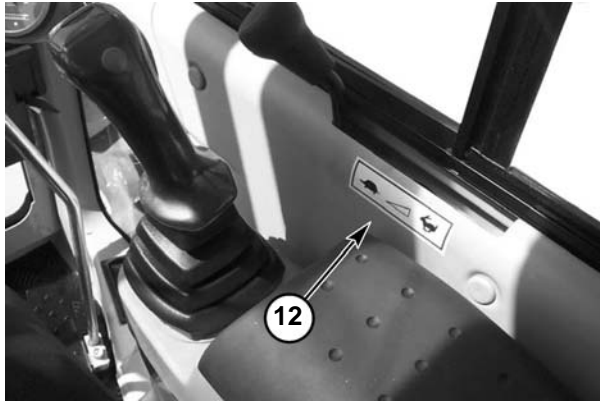
The decal kit for the Compact Excavator is listed below:

Ref. No.	Part No.	Description & Quantity
1	161965	Diesel Fuel
2	161966	Hydraulic Oil
3	161970	Arrow (2 places)
4	161981	Lift Point (4 places)
5	161982	Tiedown Point (4 places)
6	161985	WARNING - Keep Away (2 places)
7	161986	WARNING - Read Manual
8	161987	WARNING - Rotating Fan
9	162450	Travel Left
10	162451	Travel Right
11	163973	WARNING - Mandatory Shutdown
12	163974	Manual Throttle
13	163975	WARNING - Avoid Injury (2 places)
14	163976	WARNING - Avoid Injury
15	163977	WARNING - Entanglement Hazard
16	163978	WARNING - Hot Surface (2 places)
17	164854	WARNING - Avoid Injury
18	135905	502 (2 places)
19	162449	Dozer Blade - Up/Down
20	162452	Right Joystick Control
21	162453	Left Joystick Control
22	179674	Control Pattern
23	162824	Left Graphic
24	162825	Right Graphic
25	164853	Engine Compartment Latch
26	162832	Hydraulics Compartment Latch
27	102025	GEHL
28	183962	GEHL (2 places)
29	184043	GEHL
30	179705	Protective Structure
31	179681	Lifting Capacity
32	161969	Warning - Hydraulic Reservoir
33	161967	Lubrication

DECAL LOCATIONS



DECAL LOCATIONS



Overhead Panel Decals - positioning may vary by model and cabin style

HUBKRAFT/LIFTING CAPACITY/FORCE DE LEVAGE ISO 10567

		5.0m		4.0m		3.0m		2.0m		
B	A									
	4.0m	1000°	675		950°	650	950°	950°		
3.0m	980°	495		980°	660	1080°	1060			
2.0m	1000°	425	1000°	425	1120°	625	1420°	980		
1.0m	1040°	380	1050°	450	1300°	575	1855°	880		
0.0m	1075°	390	1075°	380	1425°	530	2120°	810		
-1.0m	1110°	440			1390°	525	2110°	775	3400°	1550
-2.0m	1140°	600					1650°	800	2650°	1600

1.

2.

3.

4.

WARNING

MANDATORY SAFETY SHUTDOWN PROCEDURE

1. Lower all equipment to ground.
2. Reduce throttle; shut off engine.
3. Lock out controls before exiting.
4. Remove key and take it with you.

9705272G

1.

2.

3.

4.

WARNING

TO AVOID INJURY:

1. Load and transport unit properly. Inspect job site for hazards.
2. Operate only from operator's seat. Fasten seatbelt.
3. Keep people out of DANGER ZONE.
4. Operate within stability limit of machine. DO NOT OVERLOAD. Use only approved attachments.

9705274G

1

2

20

TRAVEL LEFT
KETTE LINKS

FORWARD
VORWARTS

REVERSE
RÜCKWARTS

9

TRAVEL RIGHT
KETTE RECHTS

FORWARD
VORWARTS

REVERSE
RÜCKWARTS

10

1

2

21

DOZER BLADE DOWN
PLANIERSCHILD SENKEN

↑
○
↓

DOZER BLADE UP
PLANIERSCHILD HEBEN

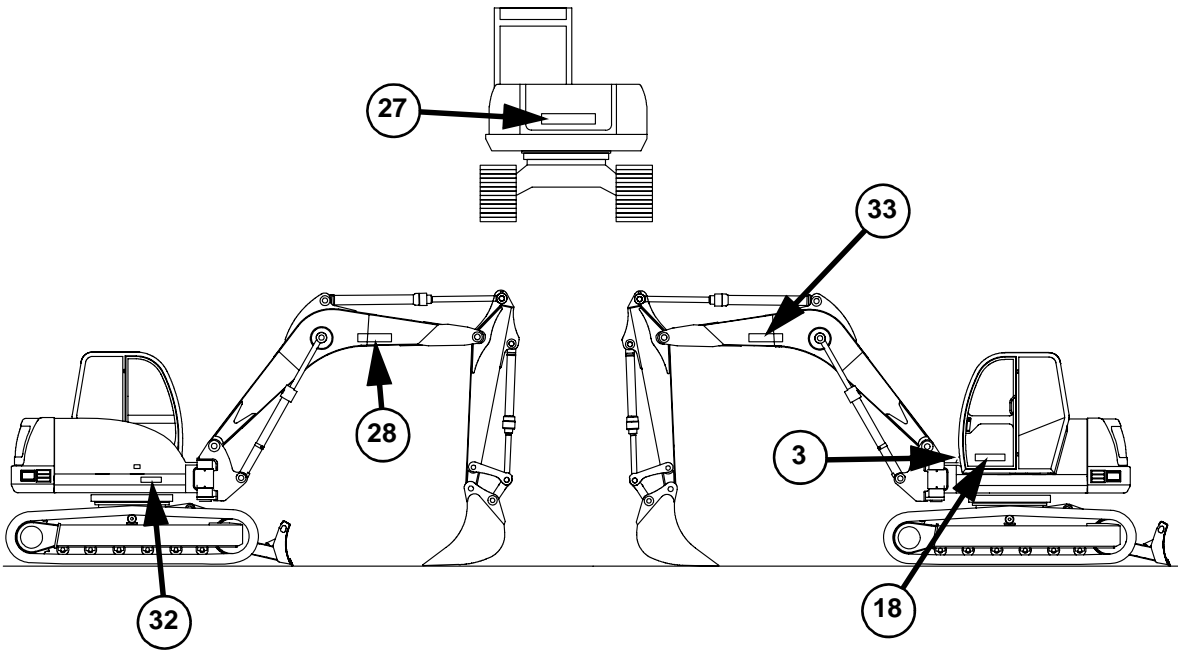
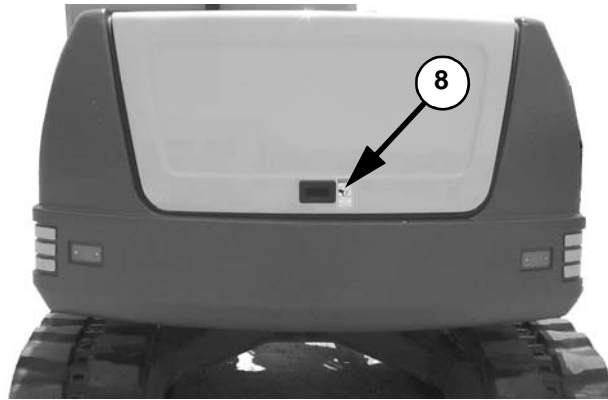
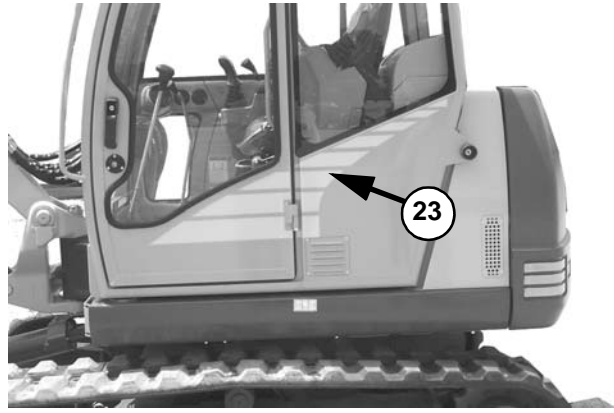
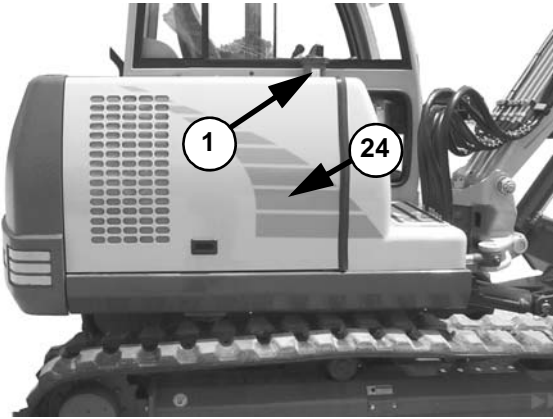
19

DECAL LOCATIONS

The decal listing has been repeated for your convenience:

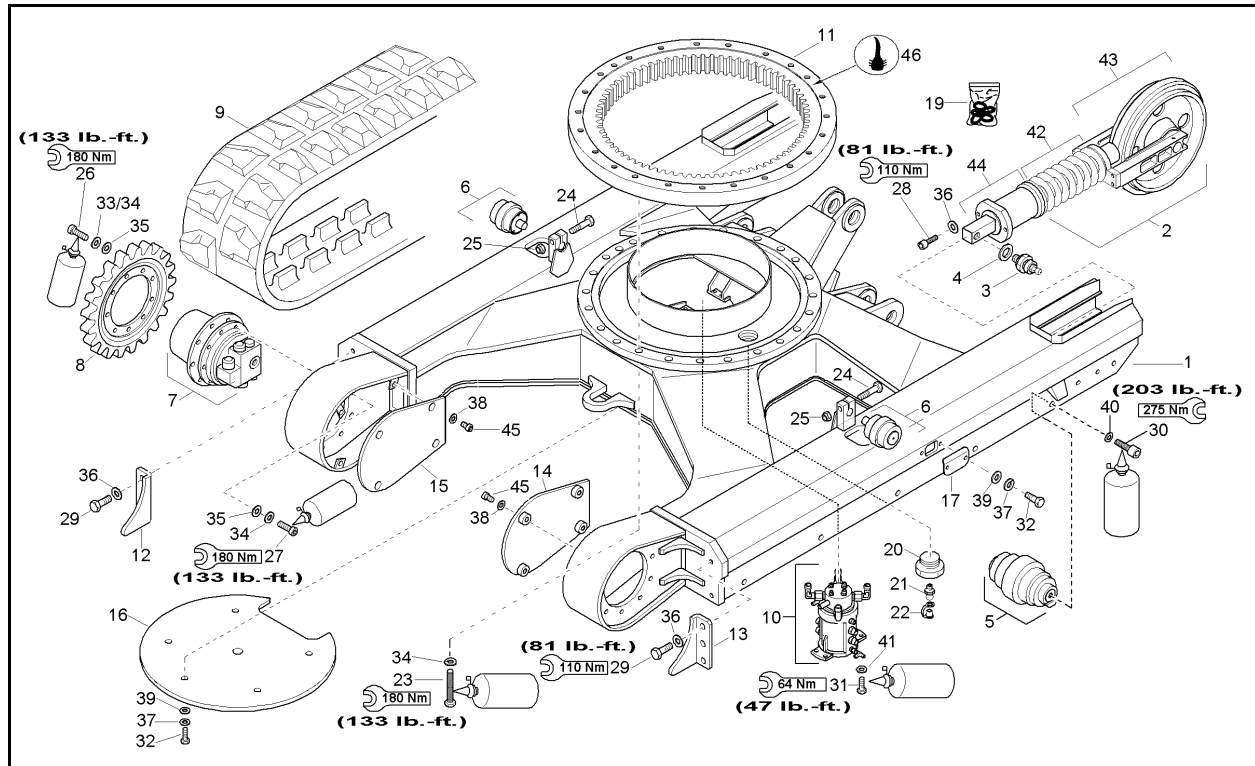
Ref. No.	Part No.	Description & Quantity
	178561	Decal Kit - 502
1	161965	Diesel Fuel
2	161966	Hydraulic Oil
3	161970	Arrow (2 places)
4	161981	Lift Point (4 places)
5	161982	Tiedown Point (4 places)
6	161985	WARNING - Keep Away (2 places)
7	161986	WARNING - Read Manual
8	161987	WARNING - Rotating Fan
9	162450	Travel Left
10	162451	Travel Right
11	163973	WARNING - Mandatory Shutdown
12	163974	Manual Throttle
13	163975	WARNING - Avoid Injury (2 places)
14	163976	WARNING - Avoid Injury
15	163977	WARNING - Entanglement Hazard
16	163978	WARNING - Hot Surface (2 places)
17	164854	WARNING - Avoid Injury
18	135905	502 (2 places)
19	162449	Dozer Blade - Up/Down
20	162452	Right Joystick Control
21	162453	Left Joystick Control
22	179674	Control Pattern
23	164862	Left Graphic (SN AB00988 and before)
	179700	Left Graphic (SN AB00989 and up)
24	162825	Right Graphic
25	164853	Engine Compartment Latch
26	162832	Hydraulics Compartment Latch
27	102025	GEHL
28	183962	GEHL (2 places)
29	184043	GEHL
30	179705	Protective Structure
31	179681	Lifting Capacity
32	161969	Warning - Hydraulic Reservoir
33	161967	Lubrication

DECAL LOCATIONS



502 - UNDERCARRIAGE, RUBBER TRACK

1000116194



Ref. No.	Part No.	Description	Qty.	Ref. No.	Part No.	Description	Qty.
1	162693	UNDERCARRIAGE	1	22	161416	PROTECTION CAP	1
2	160979	TRACK TENSIONER COMPLETE (SN AA00674V and up) See page 12 for individual components	2	23	651492	SHCS M14-1.5 X 80 10.9 ZO	24
	179174	TRACK TENSIONER COMPLETE (SN AA00673V and before) See page 13 for individual components	2	24	651416	HB M16-2.0 X 70 C10.9 ZO	2
3	160638	VALVE	2	25	651451	HLN INS M16-2.0 ZO	2
4	178067	RING	2	26	651491	SHCS M14-1.5 X 45 10.9 ZO	18
5	179166	BOTTOM ROLLER See page 14 for individual components	10	27	651490	SHCS M14-1.5 X 40 10.9 ZO	18
6	160884	SUPPORTING ROLLER See page 11 for individual components	2	28	656148	FHCS M12-1.75 X 40 C10.9 ZO	4
7	161029	TRAVELING GEAR	2	29	651405	CS M12-1.7 X 30 C10.9 ZO	6
8	160978	SPROCKET	2	30	651495	SHCS M16-1.5 X 40 10.9 ZO	20
9	160885	RUBBER TRACK	2	31	651393	CS M10-1.5 X 20 C8.8 ZO	4
10	162731	SWIVEL JOINT See page 64 for individual components	1	32	656006	CS M10-1.5 X 20 C8.8 ZO	9
11	162695	TURNTABLE	1	33	161625	LW SPRING B14 DIN7983 (SN AA04456 and before)	36
12	162724	SPROCKET GUARD LT	1	34	164920	WASHER (SN AA04457 and up)	36
13	162725	SPROCKET GUARD RT	1	35	161646	WASHER GR A15 DIN125 (SN AA04456 and before)	36
14	162718	COVER	1	36	161643	WASHER/ROUND HI-TENS	10
15	162719	COVER	1	37	161669	LOCKWASHER S10	13
16	162694	COVER	1	38	163670	WASHER	8
17	162726	COVER	2	39	161640	WASHER GR A10.5	9
18	161625	LW SPRING B14 DIN7983	24	40	161637	WASHER/NORD-LOCK NL16	20
19	160945	SEAL KIT-TRACK TENSION CYLINDER	2	41	163641	WASHER	4
20	161417	PLUG	1	42	160981	SPRINGS	2
21	161412	GREASE ZERK (9mm HEX HEAD)	1	43	160980	TENSION ROLLER	2
				44	160886	TENSION CYLINDER	2
				45	651515	SHCS M8-1.25 X 20 C8.8 ZY	8
				46	204736	SEAL (2.0M)	2

Thanks for your reading.

Please click here to download complete manual instantly.

And can also choose other manuals.

Feel free --->write to me with any questions.

Our service email:

manuals007@hotmail.com