

**GEHL**®

Form No.  
918040  
Revision C  
July 2007

# Model 502

## Compact Excavator

Serial Number AB00473 to AB02974



# Parts Manual

# INTRODUCTION

When ordering service parts, specify the correct part number, full description, quantity required, the unit model number and serial number. For your safety and continued proper operation, use only genuine GEHL service parts.

The model and serial number for this unit are on a tag located on a panel on the front of the cab.

“Right” and “left” are determined from a position sitting on the operator’s seat and facing forward.

GEHL Company reserves the right to make changes or improvements in the design or construction of any part of the unit without incurring the obligation to install such changes on any previously delivered units.

Refer to the abbreviations table located on this page for special parts descriptions. Standard attaching hardware torque values are also provided near the back of this manual. Metric torque values shown in the illustrations are in Newton-meters and are converted to foot-pounds by multiplying by 0.738.

Specific reference numbers, indicating a complete assembly, are circled in some illustrations. A small bag, pictured in some illustrations, indicates a seal kit (seals, o-rings, etc.). In the exploded view parts list, additional information may follow the Reference Number.

Serial number breaks are indicated as follows:

- (SN 999 and before) - indicates serial numbers up to and including 999.
- (SN 1000 - 2000) - indicates serial numbers between 1000 and 2000.
- (SN 999 and up) - indicates serial numbers including 999 and after.

Serial number exceptions and inclusion are indicated as follows:

- (SN 999 and before except 997) - indicates serial numbers up to and including 999, EXCEPT 997.
- (SN 1000 - 2000 except 1996 including 997) - indicates serial numbers between 1000 and 2000, INCLUDING 997 EXCEPT 1996.

- (SN 2001 and up including 1996) - indicates serial numbers including 2001 and after, INCLUDING 1996.

Unless otherwise specified, all cap screws and bolts are Grade 8.8, cadmium or zinc plated.

**NOTE:** *The following abbreviations may be used herein:*

ASSD.....	Assembled
ASY.....	Assembly
ASSY.....	Assembly
AR.....	As Required
CB.....	Carriage Bolt
CP.....	Cotter Pin
CS.....	Cap Screw (Hexagon Head)
CYL.....	Cylinder
DIA.....	Diameter
FHCS.....	Flat Head Cap Screw
GR.....	Grade
HB.....	Hex Bolt
HLN.....	Hex Lock Nut
HN.....	Hex Nut
HP.....	High Pressure
HYD.....	Hydraulic
INS.....	Insert
LH.....	Left Hand
LN.....	Lock Nut
LT.....	Left
LW.....	Lock Washer
M.....	Meter or Meters
MM/mm.....	Millimeter
NPT.....	National Pipe Threaded
NSS.....	Not Sold Separately
RH.....	Right Hand
RT.....	Right
SHCS.....	Socket Head Cap Screw
SLTD.....	Slotted
SN.....	Serial Number or Slotted Nut
SQ.....	Square
W/.....	With
W/O.....	Without

# TABLE OF CONTENTS

Introduction .....	i	Cylinder Head .....	54
Table of Contents .....	1	Cylinder Block .....	55
Decal Locations .....	3	Seal Crankshaft .....	56
Undercarriage, Rubber Track .....	8	Oil Pan.....	57
Undercarriage, Steel Track.....	9	Camshaft .....	58
Supporting Roller .....	11	Crankshaft & Pistons.....	59
Track Tensioner, Rubber Track.....	12	Oil Lubrication System .....	60
Track Tensioner, Steel Track .....	13	Cooling System .....	61
Bottom Roller .....	15	Fuel Injection System.....	62
Dozer Blade .....	16	Fuel Tank .....	63
Chassis.....	17	fuel tank.....	63
Chassis Covers .....	18	Fuel System.....	64
Chassis Lubrication .....	19	Throttle Assembly .....	65
Rear Plate .....	20	Cooling System .....	66
Counterweight .....	21	Air Intake System.....	67
Engine Hood.....	22	Exhaust System .....	68
Valve Cover.....	23	Hydraulic Pump Drive .....	69
Hose Cover .....	24	Hydraulic Tank.....	70
Hydraulic Tank Cover .....	25	Oil Cooler.....	71
Isolation Mats .....	26	Drive Motor.....	72
Tool Case.....	27	Swivel Joint.....	73
Boom .....	28	Hydraulic Pump External Parts .....	74
Dipper Arm.....	29	Hydraulic Pump Internal Parts .....	75
Connecting Link .....	30	Turntable Drive Unit .....	76
Cab Mounting.....	31	Swivel Drive.....	77
Cab.....	32	Valve Block 1.....	78
Cab.....	33	Valve Block 2.....	79
Cab.....	35	Pilot Oil Supply Unit.....	80
Cab (Cont.) .....	36	Valve Block.....	81
Cab (Cont.) .....	37	Manifold Block .....	82
Cab Interior Cover Trim.....	38	Reversing Valve .....	83
Cab Interior Cover Trim.....	39	Hand Levers .....	84
Main Wiring Harness .....	40	Dozer Blade Valve .....	85
Front Window.....	41	Dozer Blade Valve .....	86
Cab Windows .....	42	Pilot Valve Travel .....	87
Cab Sliding Window .....	43	Auxiliary Hydraulics Pilot Valve.....	88
Cab Door .....	44	4/3 Valve (Option) .....	89
Cab Door .....	45	Solenoid Valve (Option) .....	90
Rotating Beacon (Option) .....	46	ISO/SAE Pattern Valve (Option).....	91
Heater .....	47	Boom Cylinder .....	92
Operator's Seat .....	48	Boom Cylinder .....	93
Operator's Seat .....	49	Dipper Arm Cylinder .....	94
Blower .....	50	Dipper Arm Cylinder .....	95
driver seat .....	50	Bucket Cylinder .....	96
Blower Mounting Kit .....	51	Swivel Cylinder.....	97
driver seat .....	51	Dozer Blade Cylinder.....	98
Diesel Engine .....	52	Hydraulic Pump Hose Installation .....	99
Engine Mounts .....	53	Oil Cooler Hose Installation.....	100

# TABLE OF CONTENTS

Turntable Drive Unit Hose Installation...	101
Turntable Drive Unit Hose Installation...	102
Travel Motor Hose Installation .....	103
Valve Hose Installation .....	104
Valve Hose Installation .....	105
Pilot Oil Supply Hose Installation.....	106
Swivel Cylinder Hose Installation .....	107
Dozer Blade Cylinder Hose Installation .	108
Boom Hose Installation.....	109
Hand Levers Hose Installation .....	110
ISO/SAE Valve Hose Installation (Option)	111
Pilot Pressure Hose Installation .....	112
Electrical Auxiliary Hose Installation (Option)	113
Engine Wire Harness.....	114
Right Armrest Wire Harness .....	115
Right Armrest Wire Harness .....	116
Left Armrest Wire Harness .....	117
Chassis Wire Harness.....	118
Relay Box.....	119
Relay Box Installation.....	120
Chassis Headlight.....	121
Boom Headlight .....	122
Cab Headlight (Option).....	123
Battery .....	124
Horn.....	125
Tools.....	126
Numerical Index.....	130

# DECAL LOCATIONS

## GENERAL INFORMATION

Decal location information is provided to assist in the proper selection and application of new decals, in the event the original decals become damaged or the machine is repainted. Refer to the listing for the illustration reference number, part number, description and quantity of each decal provided in the kit. Refer to the appropriate illustrations for replacement locations.

To ensure proper selection of the correct replacement decals, compare all of the various closeup location drawings to your machine before starting to refinish the unit. Then circle each decal shown (applicable to your machine) while checking off its part number in the listing. After you have verified all the decals needed for replacement, place any extra unnecessary decals aside for disposal.

**NOTE:** Refer to the *SAFETY* chapter of the *Operator's Manual* for the specific information provided on all of the various safety decals furnished in the decal kit(s).

## NEW DECAL APPLICATION

Surfaces **MUST** be free from dirt, dust, grease and other foreign material before applying the new decal. To apply, remove the smaller portion of the decal backing paper and apply this part of the exposed adhesive backing to the clean surface while maintaining proper position and alignment. Peel the other portion of the backing paper off slowly while applying hand pressure to smooth out the decal surface.



## CAUTION

**ALWAYS** follow safety precautions on decals. Replace the decals if they are damaged, or if the unit is repainted. If repainting, **BE SURE** all applicable decals are affixed to your unit.

### PAINT NOTICE

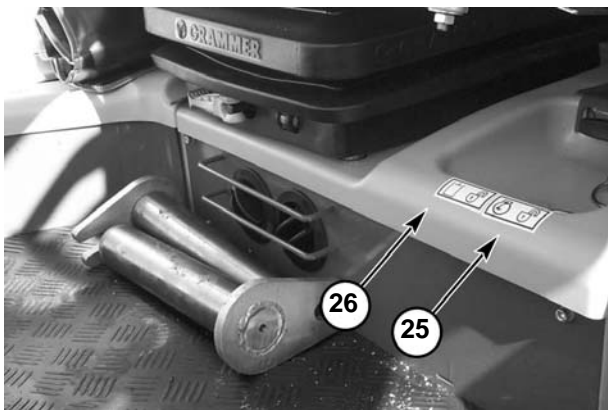
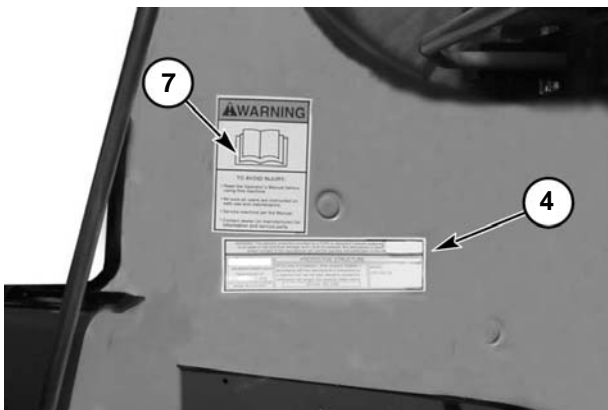
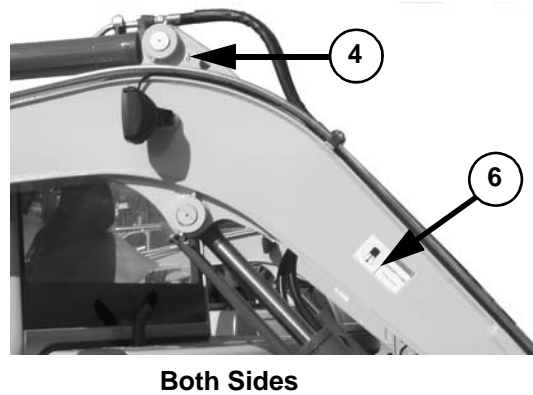
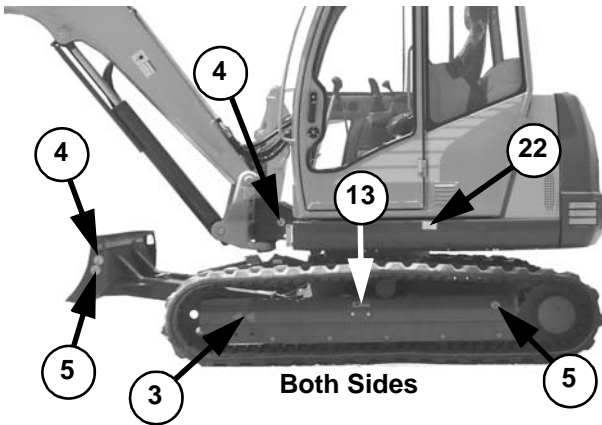
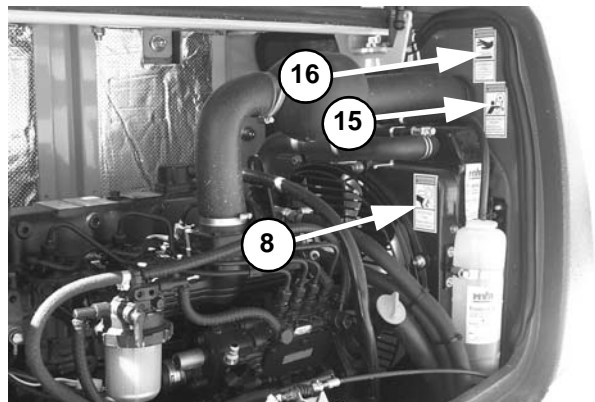
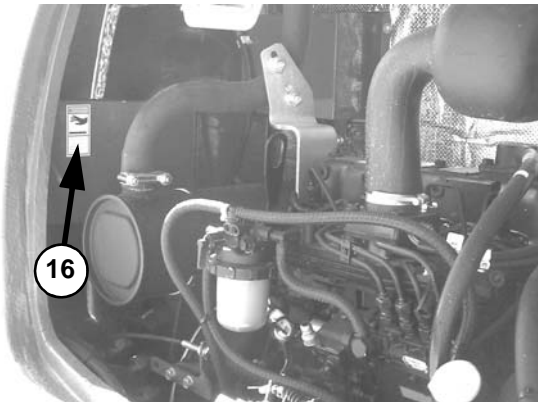
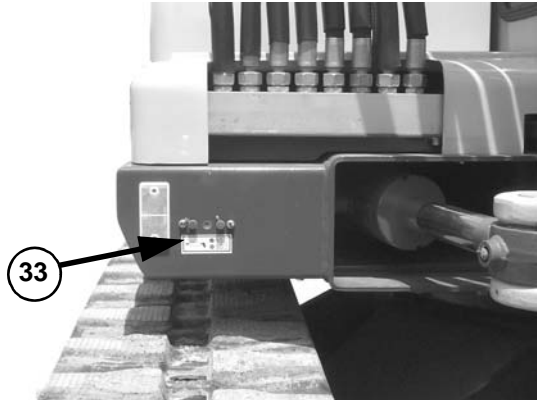
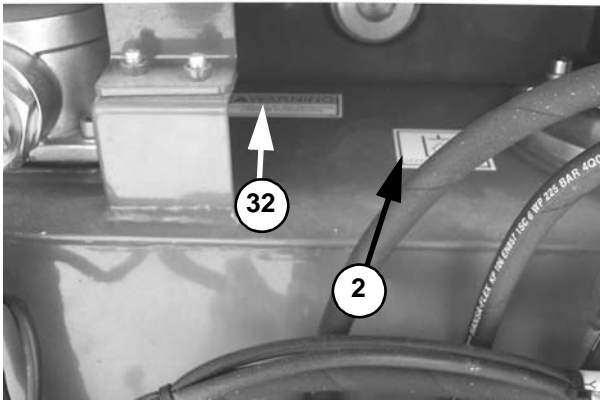
Use this list to order paint for refinishing:

167788	4 qts. Construction Yellow (GEHL)
167780	4 qts. Light Gray (GEHL)
167774	4 qts. Dark Gray (GEHL)
167789	6 (12.8 oz. Spray Cans) Yellow (GEHL)
167775	6 (12.8 oz. Spray Cans) Dark Gray (GEHL)
167781	6 (12.8 oz. Spray Cans) Light Gray (GEHL)

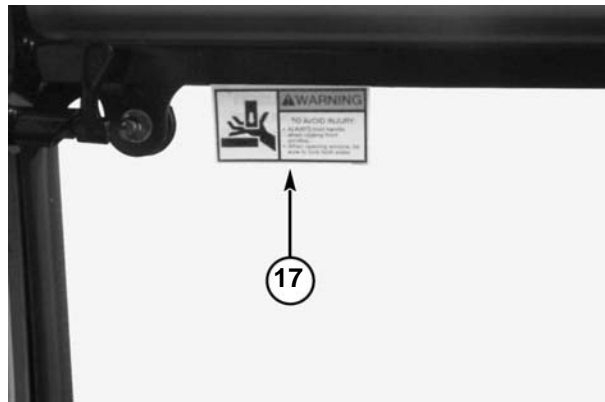
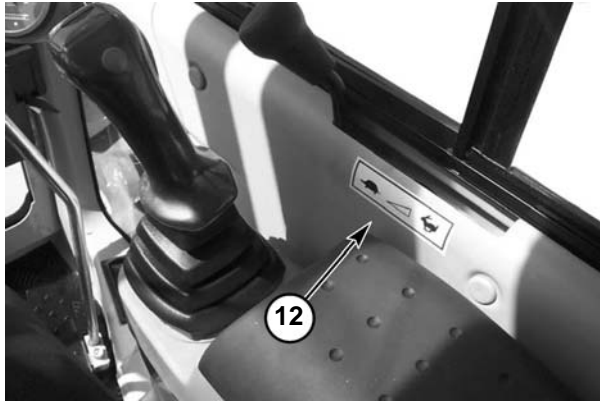
The decal kit for the Compact Excavator is listed below:

Ref. No.	Part No.	Description & Quantity
	178561	Decal Kit - 502
1	161965	Diesel Fuel
2	161966	Hydraulic Oil
3	161970	Arrow (2 places)
4	161981	Lift Point (4 places)
5	161982	Tiedown Point (4 places)
6	161985	WARNING - Keep Away (2 places)
7	161986	WARNING - Read Manual
8	161987	WARNING - Rotating Fan
9	162450	Travel Left
10	162451	Travel Right
11	163973	WARNING - Mandatory Shutdown
12	163974	Manual Throttle
13	163975	WARNING - Avoid Injury (2 places)
14	163976	WARNING - Avoid Injury
15	163977	WARNING - Entanglement Hazard
16	163978	WARNING - Hot Surface (2 places)
17	164854	WARNING - Avoid Injury
18	135905	502 (2 places)
19	162449	Dozer Blade - Up/Down
20	162452	Right Joystick Control
21	162453	Left Joystick Control
22	179674	Control Pattern
23	164862	Left Graphic (SN AB00988 and before)
	179700	Left Graphic (SN AB00989 and up)
24	162825	Right Graphic
25	164853	Engine Compartment Latch
26	162832	Hydraulics Compartment Latch
27	102025	GEHL
28	183962	GEHL (2 places)
29	184043	GEHL
30	179705	Protective Structure
31	179681	Lifting Capacity
32	161969	Warning - Hydraulic Reservoir
33	161967	Lubrication

# DECAL LOCATIONS



# DECAL LOCATIONS



Overhead Panel Decals - positioning may vary by model and cabin style

**HUBKRAFT/LIFTING CAPACITY/FORCE DE LEVAGE ISO 10567**

		5.0m		4.0m		3.0m		2.0m	
B	A								
	4.0m	1000*	675		950*	650	950*	950*	
3.0m	980*	495		980*	660	1080*	1060		
2.0m	1000*	425	1000*	425	1120*	625	1420*	980	
1.0m	1040*	380	1050*	450	1300*	575	1855*	880	
0.0m	1075*	390	1075*	380	1425*	530	2120*	810	
-1.0m	1110*	440			1390*	525	2110*	775	3400*
-2.0m	1140*	600					1650*	800	2650*
									1600

**1.**

**2.**

**3.**

**4.**

**WARNING**

**MANDATORY SAFETY SHUTDOWN PROCEDURE**

1. Lower all equipment to ground.
2. Reduce throttle; shut off engine.
3. Lock out controls before exiting.
4. Remove key and take it with you.

**1.**

**2.**

**3.**

**4.**

**WARNING**

**TO AVOID INJURY:**

1. Load and transport unit properly. Inspect job site for hazards.
2. Operate only from operator's seat. Fasten seatbelt.
3. Keep people out of DANGER ZONE.
4. Operate within stability limit of machine. DO NOT OVERLOAD. Use only approved attachments.

**20**

**1**

**2**

**9**

TRAVEL LEFT  
KETTE LINKS

FORWARD  
VORWÄRTS

REVERSE  
RÜCKWÄRTS

**10**

TRAVEL RIGHT  
KETTE RECHTS

FORWARD  
VORWÄRTS

REVERSE  
RÜCKWÄRTS

**21**

**1**

**2**

**19**

DOZER BLADE DOWN  
PLANERSCHILD SENKEN

↑  
○  
↓

DOZER BLADE UP  
PLANERSCHILD HEBEN

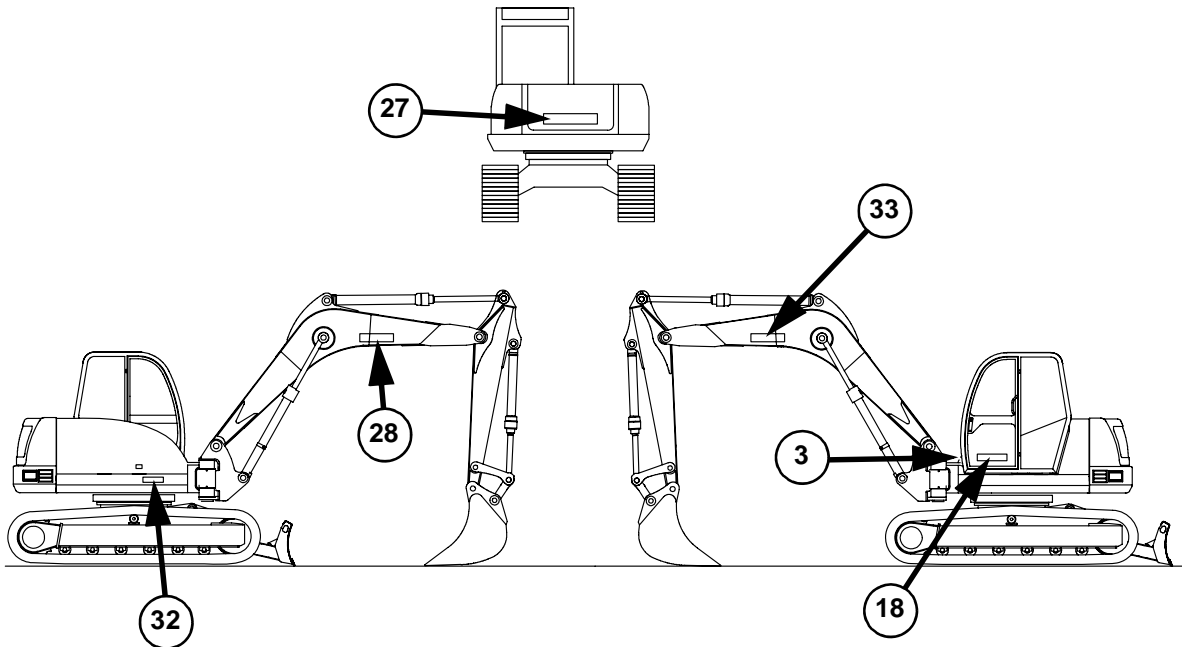
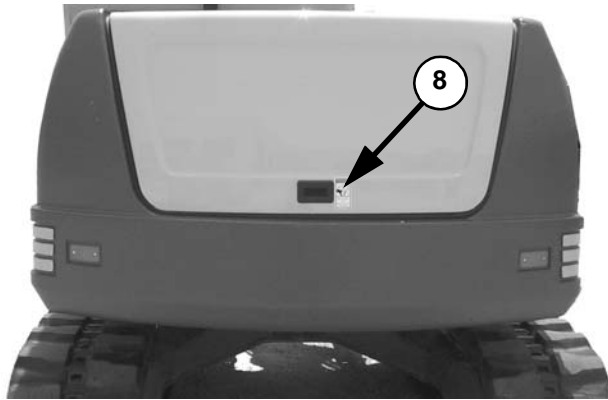
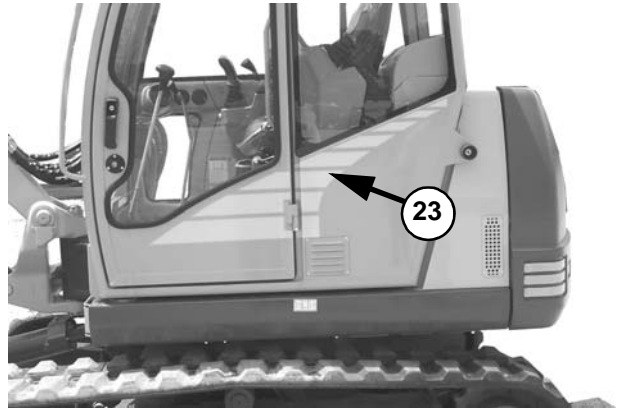
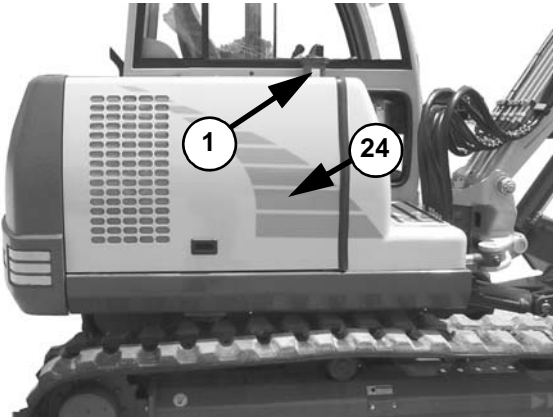
# DECAL LOCATIONS

The decal listing has been repeated for your convenience:

Ref. No.	Part No.	Description & Quantity
	178561	Decal Kit - 502
1	161965	Diesel Fuel
2	161966	Hydraulic Oil
3	161970	Arrow (2 places)
4	161981	Lift Point (4 places)
5	161982	Tiedown Point (4 places)
6	161985	WARNING - Keep Away (2 places)
7	161986	WARNING - Read Manual
8	161987	WARNING - Rotating Fan
9	162450	Travel Left
10	162451	Travel Right
11	163973	WARNING - Mandatory Shutdown
12	163974	Manual Throttle
13	163975	WARNING - Avoid Injury (2 places)
14	163976	WARNING - Avoid Injury
15	163977	WARNING - Entanglement Hazard
16	163978	WARNING - Hot Surface (2 places)
17	164854	WARNING - Avoid Injury
18	135905	502 (2 places)
19	162449	Dozer Blade - Up/Down
20	162452	Right Joystick Control
21	162453	Left Joystick Control
22	179674	Control Pattern
23	164862	Left Graphic (SN AB00988 and before)
	179700	Left Graphic (SN AB00989 and up)
24	162825	Right Graphic
25	164853	Engine Compartment Latch
26	162832	Hydraulics Compartment Latch
27	102025	GEHL
28	183962	GEHL (2 places)
29	184043	GEHL
30	179705	Protective Structure
31	179681	Lifting Capacity
32	161969	Warning - Hydraulic Reservoir
33	161967	Lubrication

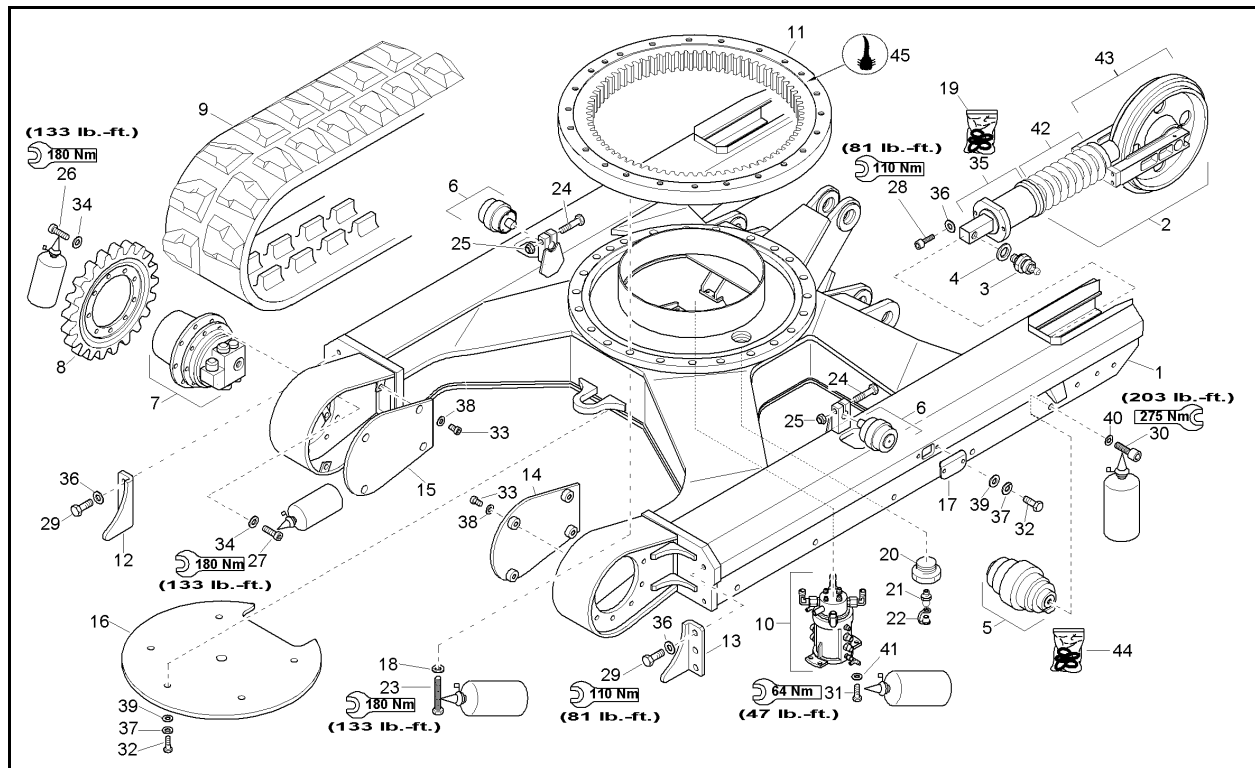


# DECAL LOCATIONS



# 502 - UNDERCARRIAGE, RUBBER TRACK

## 1000116202



Ref. No.	Part No.	Description	Qty.	Ref. No.	Part No.	Description	Qty.
1	162693	UNDERCARRIAGE	1	21	161412	GREASE ZERK (9mm HEX HEAD)	1
2	160979	TRACK TENSIONER COMPLETE See page 12 for individual components	2	22	161416	PROTECTION CAP	1
3	160638	VALVE	2	23	651492	SHCS M14-1.5 X 80 10.9 ZO	24
4	178067	RING	2	24	651416	HB M16-2.0 X 70 C10.9 ZO	2
5	179166	BOTTOM ROLLER See page 15 for individual components	10	25	651451	HLN INS M16-2.0 ZO	2
6	160884	SUPPORTING ROLLER See page 11 for individual components	2	26	651491	SHCS M14-1.5 X 45 10.9 ZO	18
7	161029	TRAVELING GEAR	2	27	651490	SHCS M14-1.5 X 40 10.9 ZO	18
8	160978	SPROCKET	2	28	651485	SHCS M12-1.75 X 45 10.9 ZY	4
9	160885	RUBBER TRACK	2	29	651405	CS M12-1.7 X 30 C10.9 ZO	6
10	179138	SWIVEL JOINT II (SN AB00478 and up) See page 73 for individual components	1	30	651495	SHCS M16-1.5 X 40 10.9 ZO	20
	162731	SWIVEL JOINT (SN AB00477 and before) See page 73 for individual components	1	31	651394	CS M10-1.5 X 25 C10.9 ZO	4
11	162695	TURNTABLE	1	32	656006	CS M10-1.5 X 20 C8.8 ZO	9
12	162724	SPROCKET GUARD LT	1	33	651515	SHCS M8-1.2 X 20 8.8 ZO	8
13	162725	SPROCKET GUARD RT	1	34	164920	WASHER	36
14	162718	COVER	1	35	160886	TENSION CYLINDER	2
15	162719	COVER	1	36	161643	WASHER/ROUND HI-TENS	10
16	162694	COVER	1	37	161669	LOCKWASHER S10	13
17	162726	COVER	2	38	163670	WASHER	8
18	161625	LW SPRING B14 DIN7983	24	39	161640	WASHER GR A10.5	9
19	160945	SEAL KIT/TRACK TENSION CYLINDER	2	40	161637	WASHER/NORD-LOCK NL16	20
20	161417	PLUG	1	41	163641	WASHER	4
				42	160981	SPRINGS	2
				43	160980	TENSION ROLLER	2
				44	179168	SEAL KIT/BOTTOM ROLLER	2
				45	204736	SEAL (2.0M)	2

**Thanks for your reading.**

**Please click here to download complete manual instantly.**

**And can also choose other manuals.**

**Feel free --->write to me with any questions.**

**Our service email:**

**manuals007@hotmail.com**