

Form No.  
**918119**  
Revision C

# 480T All-Wheel-Steer Loader

Beginning Serial Number: 342100107



## PARTS MANUAL

**GEHL**<sup>®</sup>

## Introduction

When ordering service parts, specify the correct part number, full description, quantity required, the unit model number and serial number. For your safety and continued proper operation, use only genuine GEHL service parts.

The model and serial number for this unit are on a tag located on a panel on the front of the cabin.

“Right” and “left” are determined from a position sitting on the seat and facing forward.

GEHL Company reserves the right to make changes in design or construction of any part of the machine without obligation to install such changes on previously delivered machines.

Refer to the abbreviations table located on this page for the various fastener descriptions. Standard attaching hardware torque values are also provided on the inside back cover. Metric torque values shown in the illustrations are in Newton-meters and can be converted to foot-pounds by multiplying by 0.738.

Specific Reference Numbers, indicating a complete assembly, are circled in some illustrations. A small bag, pictured in some illustrations, indicates a seal kit (seals, o-rings, etc.). In the exploded view parts list, additional information may follow the Reference Number.

Serial Number breaks are indicated as follows:

(SN → XXXXX) - indicates Serial Numbers up to and including XXXXX.

(SN YYYYYY →) - indicates Serial Numbers YYYYYY and after.

Unless otherwise specified, all cap screws and bolts are Grade 8.8, cadmium or zinc plated.

**NOTE:** *The following abbreviations may be used herein:*

ASSD	– Assembled
ASSY	– Assembly
CB	– Carriage Bolt
CP	– Cotter Pin
CS	– Cap Screw (Hexagon Head)
FHCS	– Flat Head Cap Screw
GR	– Grade
HB	– Hex Bolt
HLN	– Hex Lock Nut
HN	– Hex Nut
HP	– High Pressure
INS	– Insert
LN	– Lock Nut
LT	– Left
LW	– Lock Washer
M	– Metric
MM/mm	– Millimeter
RT	– Right
SHCS	– Socket Head Cap Screw
SLTD	– Slotted
SN	– Serial Number or Slotted Nut

# TABLE OF CONTENTS

Introduction . . . . .	Inside Front Cover	Hydraulic Oil Tank . . . . .	50
Decal Locations . . . . .	2-4	Control Lever Console . . . . .	51
Engine Mounting . . . . .	5	Pilot Valve - Float Position . . . . .	52
Engine Block . . . . .	6	Control Valve . . . . .	53
Cylinder Head . . . . .	7	Lift Cylinder . . . . .	54
Injection System . . . . .	8	Tilt Cylinder . . . . .	55
Engine Lubrication . . . . .	9	Extension Cylinder . . . . .	56
Engine Accessories . . . . .	10	Slave Cylinder . . . . .	57
Exhaust Components . . . . .	11	Auxiliary Control Circuit . . . . .	58-59
Fuel Tank . . . . .	12	Instrument Panel . . . . .	60
Air Filter . . . . .	13	Lights . . . . .	61
Oil Cooler . . . . .	14	Battery . . . . .	62
Throttle Pedal . . . . .	15	Wiring Harnesses . . . . .	63
Hydraulic Motor . . . . .	16-17	Electric Mounting Kit . . . . .	64
Hydraulics Installation - Drive . . . . .	18-21	Tires . . . . .	65
Frame/Counterweights . . . . .	22	Trim and Engine Cover . . . . .	66
Variable Displacement Pump . . . . .	23-25	Telescopic Boom . . . . .	67
Axles . . . . .	26-27	Telescopic - Front . . . . .	68
Front Axle . . . . .	28	Telescopic - Rear . . . . .	69
Steering . . . . .	29	Cabin . . . . .	70-71
Locking Differential . . . . .	30	Cabin Door - Left . . . . .	72
Axle Shaft . . . . .	31	Cabin Door - Right . . . . .	73
Wheel Hub & Brakes . . . . .	32	Cabin Trim . . . . .	74
Rear Axle . . . . .	33	Quickhitch Assembly . . . . .	75
Steering . . . . .	34	Operator's Seat - Upper . . . . .	76-77
Locking Differential . . . . .	35	Operator's Seat - Lower . . . . .	78-79
Axle Shaft . . . . .	36	Operator's Seat - Attachments . . . . .	80
Wheel Hub . . . . .	37	Heater . . . . .	81
Gearbox . . . . .	38	Air Conditioning . . . . .	82-83
Gears . . . . .	39	Tools . . . . .	84
Service Brake - Hydraulics . . . . .	40	Buckets . . . . .	85
Parking Brake . . . . .	41	Pallet Forks . . . . .	86
Hydraulics Installation - Steering . . . . .	42-43	Alphabetical Index . . . . .	87
Hydraulic Pump . . . . .	44-45	Numerical Index . . . . .	88-102
Hydraulics Installation - Pilot Valve . . . . .	46-47	Hydraulic Fitting Data . . . . .	103
Hydraulics Installation - Control Valve . . . . .	48	Torque Specifications Chart . . . . .	Inside Rear Cover
Hydraulics - Telescopic . . . . .	49		

# DECAL LOCATIONS

## GENERAL INFORMATION

Decal location information is provided to assist in the proper selection and application of new decals, in the event the original decals become damaged or the machine is repainted. Refer to the listing for the illustration reference number, part number, description and quantity of each decal provided in the kit. Refer to the appropriate illustrations for replacement locations.

To ensure proper selection of the correct replacement decals, compare all of the various closeup location drawings to your machine before starting to refinish the unit. Then circle each decal shown (applicable to your machine) while checking off its part number in the listing. After you have verified all the decals needed for replacement, place any extra unnecessary decals aside for disposal.

**NOTE:** Refer to the *SAFETY* chapter of the *Operator's Manual* for the specific information provided on all of the various safety decals furnished in the decal kit(s).

## NEW DECAL APPLICATION

Surfaces **MUST** be free from dirt, dust, grease and other foreign material before applying the new decal. To apply, remove the smaller portion of the decal backing paper and apply this part of the exposed adhesive backing to the clean surface while maintaining proper position and alignment. Peel the other portion of the backing paper off slowly while applying hand pressure to smooth out the decal surface.



## CAUTION

**ALWAYS** follow safety precautions on decals. Replace the decals if they are damaged, or if the unit is repainted. If repainting, **BE SURE** all applicable decals are affixed to your unit.

### PAINT NOTICE

Use this list to order paint for refinishing:

167768	4 qts. AWS Yellow (GEHL)
167758	4 qts. Charcoal Gray (GEHL)
167774	4 qts. Dark Gray (GEHL)
167769	6 (12.8 oz. Spray Cans) AWS Yellow (GEHL)
167775	6 (12.8 oz. Spray Cans) Dark Gray (GEHL)
167760	6 (12.8 oz. Spray Cans) Charcoal Gray (GEHL)

The decal kit for the model 480T All-Wheel-Steer Loader is listed below:

Ref. No.	Part No.	Description & Quantity
	208382	Decal Kit - 480T
1	209871	Joystick Controls
2	184306	GEHL - 4.75 x 20.16 (2 Places)
3	183963	GEHL - 3.75X15.92
4	174062	480T (2 Places)
10	0004355533	Safety Alert Symbol - Small
11	0004355833	Safety Alert Symbol - Large (2 Places)
14	209451	WARNING - Moving Parts
16	0004351144	Arrow (2 Places)
21	0004359734	WARNING - Use Seat Belt
22	0004359834	CAUTION - Avoid Danger of Serious Injury
23	208614	Maintenance
24	209716	Lift Point (4 Places)
25	209717	Tiedown Point (3 Places)
26	208711	Load Chart
27	208712	Information - Sound Power Level Compliance
30	208714	Fuse Chart
33	208717	Fuse Chart
35	208869	Ecospeed

# 480T

# GEHL

**WARNING**

**Avoid crushing  
DO NOT JUMP  
if machine tips**

**USE  
SEAT  
BELT**

**CAUTION**

*(Small text describing cautionary measures)*

10 h

50 h

342 00 0001    343 00 0001  
342 01 0001    343 01 0001

16 26

**Tapfediagramm**

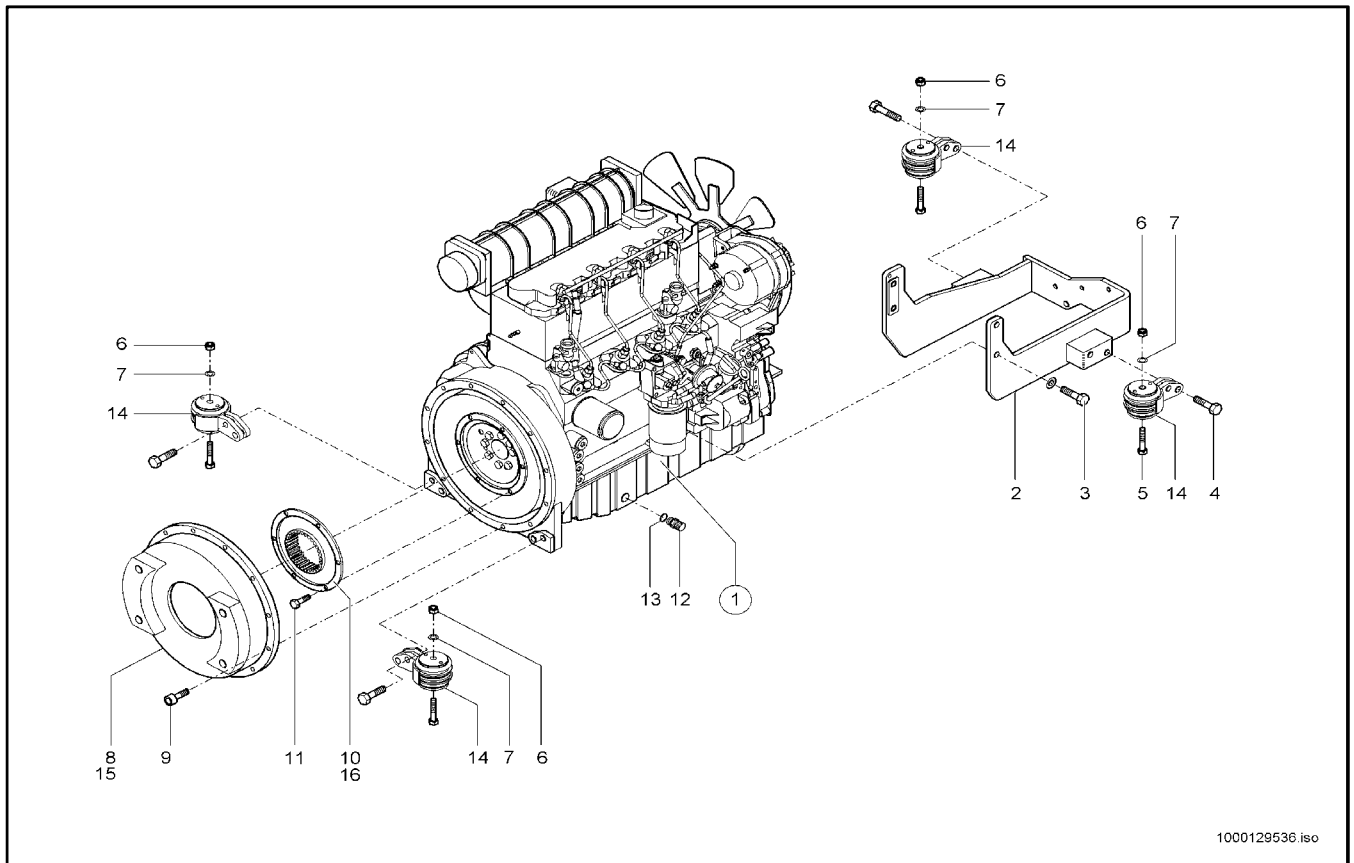
**Referenzdruckpunkte**

Druckpunkt (g)	Druckpunkt (mbar)	Druckpunkt (bar)
100	10	1
200	20	2
300	30	3

**Typ XXXXX**

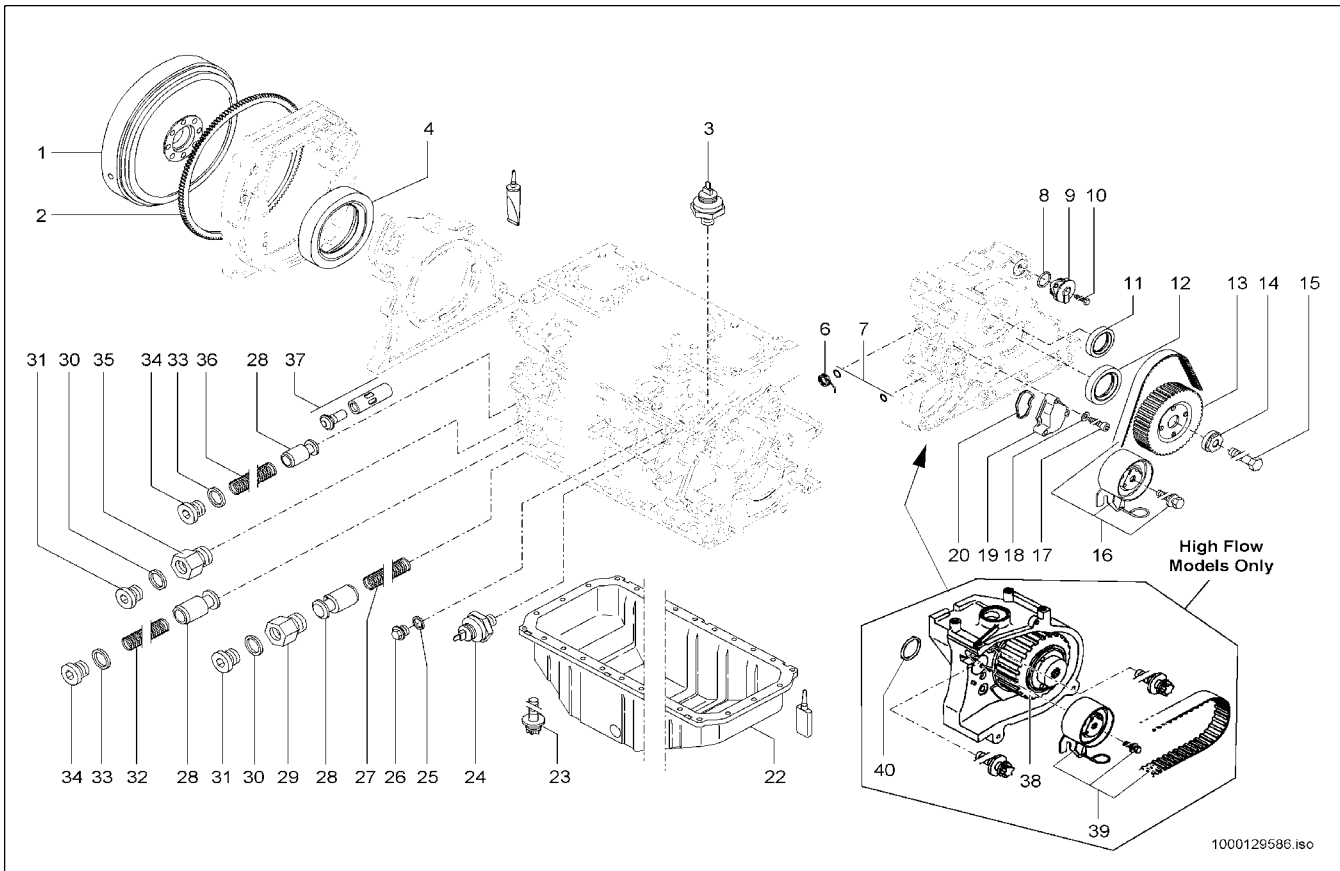
Teil	Bezeichnung	Teil-Nr.	Druckpunkt	Druckpunkt	Druckpunkt
1	...	...	...	...	...
2	...	...	...	...	...
3	...	...	...	...	...
4	...	...	...	...	...
5	...	...	...	...	...
6	...	...	...	...	...
7	...	...	...	...	...
8	...	...	...	...	...
9	...	...	...	...	...
10	...	...	...	...	...
11	...	...	...	...	...
12	...	...	...	...	...
13	...	...	...	...	...
14	...	...	...	...	...
15	...	...	...	...	...
16	...	...	...	...	...
17	...	...	...	...	...
18	...	...	...	...	...
19	...	...	...	...	...
20	...	...	...	...	...
21	...	...	...	...	...
22	...	...	...	...	...
23	...	...	...	...	...
24	...	...	...	...	...
25	...	...	...	...	...
26	...	...	...	...	...
27	...	...	...	...	...
28	...	...	...	...	...
29	...	...	...	...	...
30	...	...	...	...	...
31	...	...	...	...	...
32	...	...	...	...	...
33	...	...	...	...	...
34	...	...	...	...	...
35	...	...	...	...	...

**INTENTIONALLY BLANK**



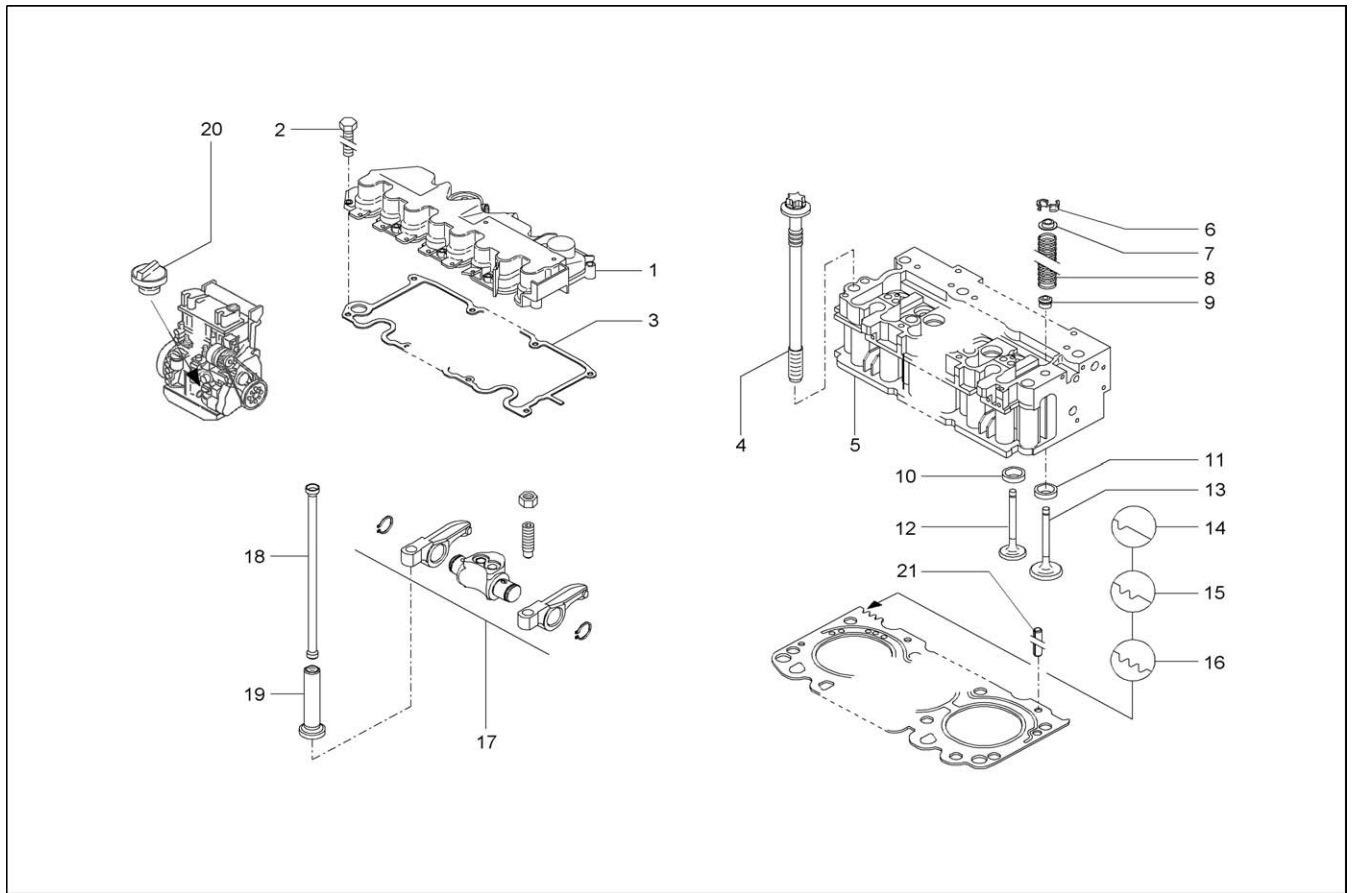
1000129536 iso

Ref. No.	Part No.	Description	Qty. Req.	Ref. No.	Part No.	Description	Qty. Req.
1	205639	DIESEL ENGINE (115L HIGH FLOW) ...	1	9	651473	SHCS M10-1.25X25 F8.8 ZY .....	11
2	208479	ENGINE SUPPORT .....	1	10	208489	COUPLING - 12.5 MPH (20 KM/H) .....	1
3	7236677952	HEX SCREW M14X35-8.8 A2C .....	4	11	656094	CS M8-1.25X30 C8.8 ZY .....	6
4	7234678147	HEX SCREW M14X55-10.9 .....	4	12	0003618484	DRAIN COUPLING .....	1
5	651403	HEX SCREW .....	4	13	7593641029	SEAL RING .....	1
6	179793	NUT .....	4	14	208867	ENGINE MOUNTING .....	4
7	7451680113	WASHER .....	4	15	208932	FLANGE - 25 MPH (40 KM/H) .....	1
8	208488	FLANGE - 12.5 MPH (20 KM/H) .....	1	16	208931	COUPLING - 25 MPH (40 KM/H) .....	1

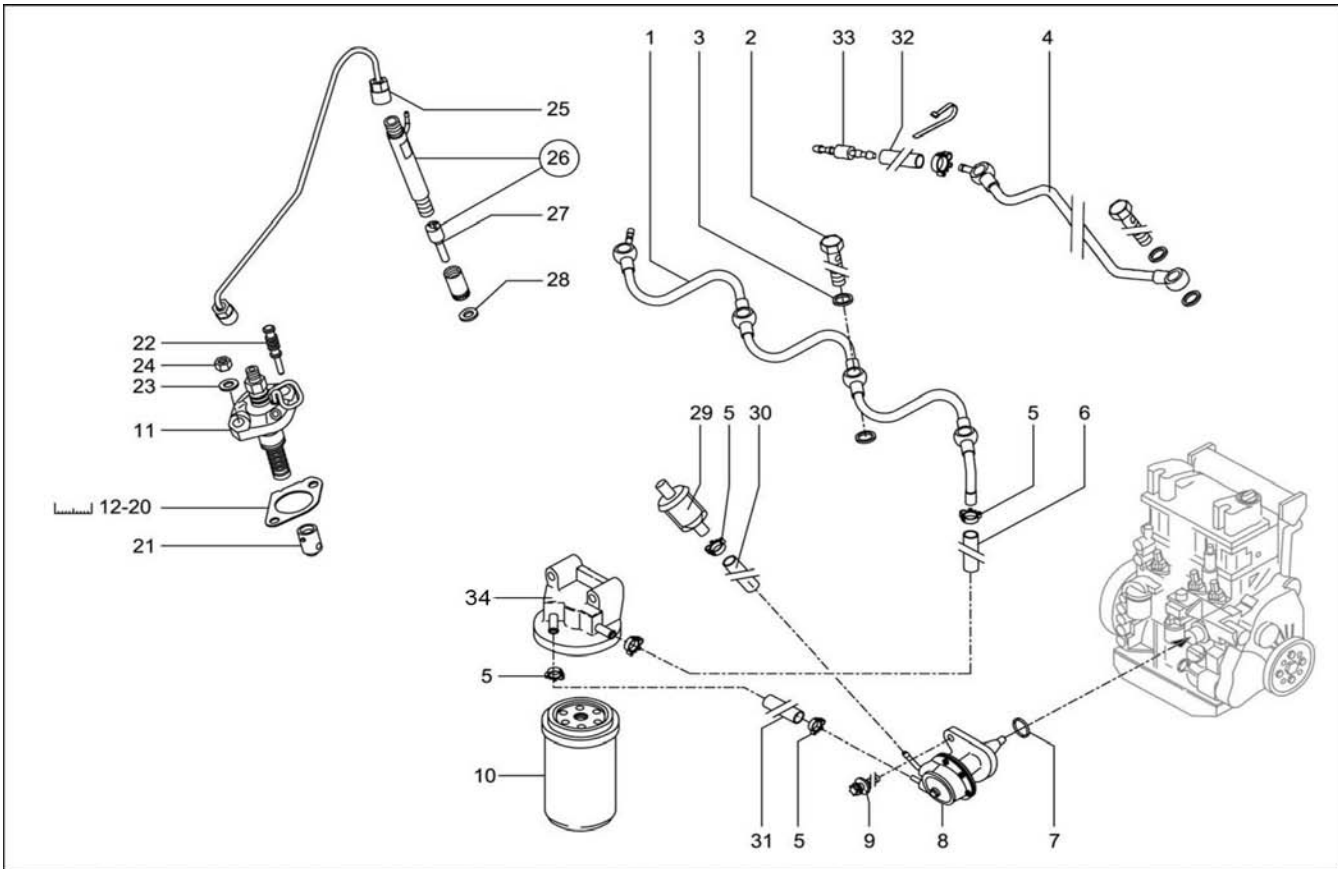


Ref. No.	Part No.	Description	Qty. Req.	Ref. No.	Part No.	Description	Qty. Req.
1	208864	FLYWHEEL .....	1	22	0000802897	OIL PAN .....	1
2	208845	RING GEAR .....	1	23	0000802645	TORX-HEAD SCREW M8X16 .....	26
3	208679	TEMPERATURE SWITCH .....	1	24	208826	OIL PRESSURE SWITCH .....	1
4	0000801363	ROTARY SHAFT SEAL .....	1	25	208807	SEAL RING .....	1
6	209125	SPRING .....	1	26	208810	PLUG .....	1
7	0000802741	O-RING .....	2	27	0000802676	COMPRESSION SPRING .....	1
8	208832	SEAL RING .....	1	28	0000802673	VALVE .....	3
9	0000802765	BREATHER VALVE .....	1	29	208843	NIPPLE .....	1
10	208814	HEX SCREW .....	1	30	208806	SEAL RING .....	2
11	0000801368	ROTARY SHAFT SEAL .....	1	31	208817	PLUG .....	2
12	0000801369	ROTARY SHAFT SEAL .....	1	32	0000802675	COMPRESSION SPRING .....	1
13	209110	GEAR .....	1	33	208809	SEAL RING .....	2
14	0000802659	WASHER .....	1	34	208797	PLUG .....	2
15	0000801898	HEX SCREW 14X1.5X110 .....	1	35	208842	NIPPLE .....	1
16	209126	REPAIR KIT/TIMING BELT .....	1	36	0000802674	COMPRESSION SPRING .....	1
17	208824	SCREW .....	3	37	0000803948	THERMOSTAT .....	1
18	208799	SPACER .....	3	38	209134	GEAR .....	1
19	208850	COVER .....	1	39	209128	REPAIR KIT/TIMING BELT .....	1
20	0000802742	SEAL .....	1	40	209129	SEAL RING .....	1

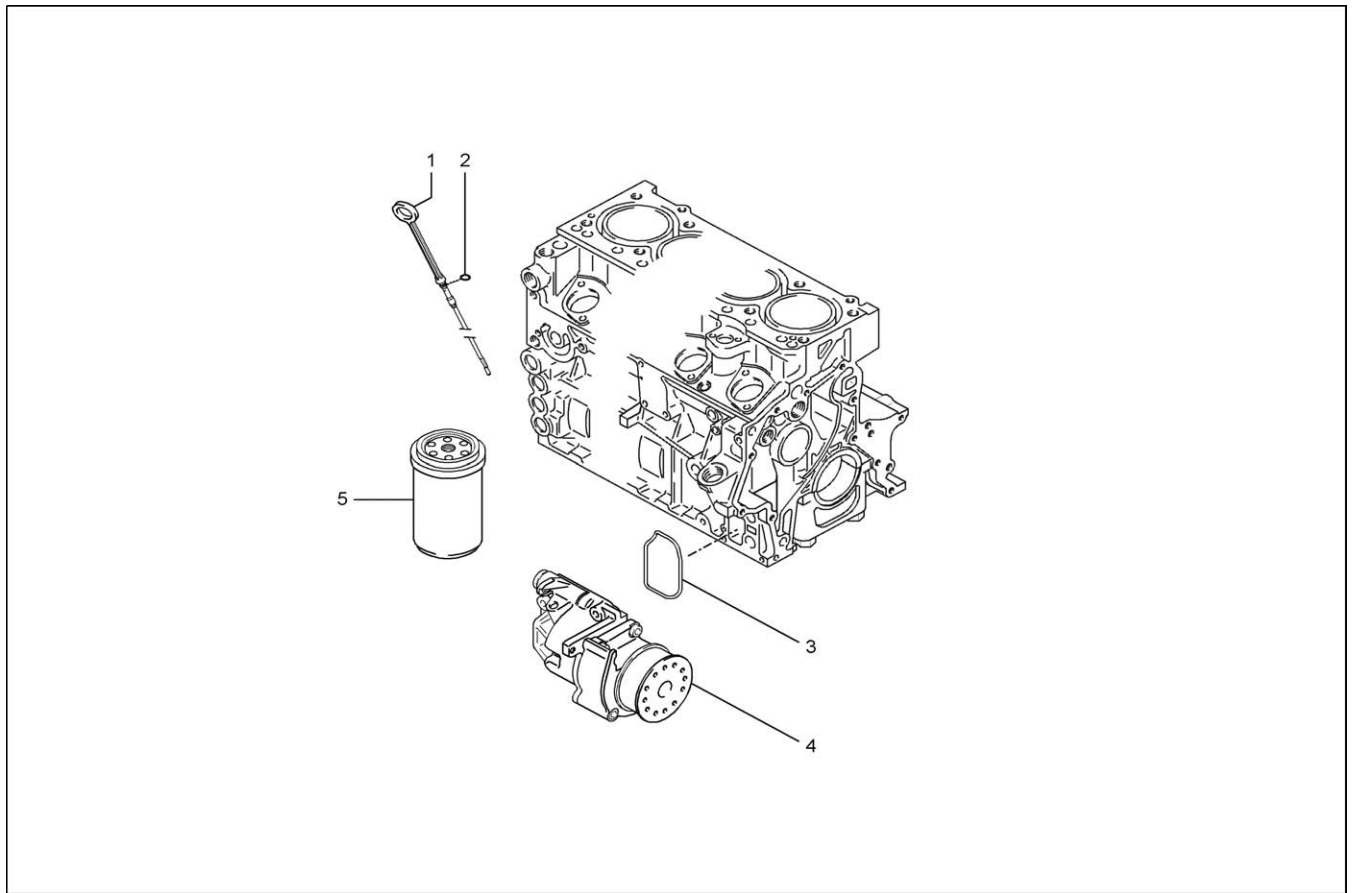




Ref. No.	Part No.	Description	Qty. Req.	Ref. No.	Part No.	Description	Qty. Req.
1	208991	VALVE COVER .....	1	12	208862	EXHAUST VALVE .....	4
2	208815	HEX SCREW .....	10	13	208994	INTAKE VALVE .....	4
3	0000802903	VALVE COVER GASKET .....	1	14	208995	CYLINDER HEAD GASKET .....	1
4	0000802651	CYLINDER HEAD BOLT .....	10	15	208996	CYLINDER HEAD GASKET .....	1
5	208992	CYLINDER HEAD .....	1	16	208997	CYLINDER HEAD GASKET .....	1
7	0000801929	SEAL .....	8	17	0000801953	TILT LEVER SUPPORT .....	4
8	0000802658	COMPRESSION SPRING .....	8	18	0000801918	BUMPER .....	8
9	208849	SPRING CAP .....	8	19	0000804268	VALVE TAPPET .....	8
10	208861	VALVE SEAT .....	4	20	0000802648	LOCK .....	1
11	208993	VALVE SEAT .....	4	21	208844	COTTER PIN .....	1



Ref. No.	Part No.	Description	Qty. Req.	Ref. No.	Part No.	Description	Qty. Req.
1	209120	FUEL LINE	1	18	0000802689	SPACER - 1.0 MM	1
2	0000801847	BANJO BOLT	8	19	208847	SPACER - 1.1 MM	1
3	208833	SEAL RING	16	20	208848	SPACER - 1.2 MM	1
4	209117	FUEL LINE	1	21	209115	SPACER	4
5	0000801899	CLAMP	5	22	209116	LOCK PLUG	4
6	209133	HOSE	1	23	208838	SPACER	2
7	0000801396	O-RING	1	24	208813	HEXAGON NUT	2
8	209123	FUEL PUMP	1	25	209124	INJECTION LINE	4
9	208829	TORX SCREW	1	26	209121	INJECTION VALVE	4
10	132024	FUEL FILTER	1	27	209122	NOZZLE ELEMENT	4
11	209111	INJECTION PUMP	4	28	0000801391	ENGINE GASKET	1
12	0000802683	SPACER - 0.4 MM	1	29	137794	FUEL FILTER	1
13	0000802684	SPACER - 0.5 MM	1	30	209135	HOSE	1
14	0000802685	SPACER - 0.6 MM	1	31	209132	HOSE	1
15	0000802686	SPACER - 0.7 MM	1	32	209118	HOSE	1
16	0000802687	SPACER - 0.8 MM	1	33	209119	CONNECTION PIECE	1
17	0000802688	SPACER - 0.9 MM	1	34	0000802732	FILTER HEAD	1



Ref. No.	Part No.	Description	Qty. Req.	Ref. No.	Part No.	Description	Qty. Req.
1	208846	OIL DIPSTICK .....	1	4	208863	LUBE, OIL PUMP .....	1
2	208827	SEAL RING .....	1	5	132023	OIL FILTER .....	1
3	0000802665	GASKET .....	1				

**Thanks for your reading.**

**Please click here to download complete manual instantly.**

**And can also choose other manuals.**

**Feel free --->write to me with any questions.**

**Our service email:**

**manuals007@hotmail.com**