

480

All-Wheel-Steer Loader

Beginning Serial Number: 342010001

GEHL®

Form No.
918116

Revision E
10/06



PARTS MANUAL

INTRODUCTION

When ordering service parts, specify the correct part number, full description, quantity required, the unit model number and serial number. For your safety and continued proper operation, use only genuine GEHL service parts.

The model and serial number for this unit are on a tag located on a panel on the front of the cabin.

"Right" and "left" are determined from a position sitting on the seat and facing forward.

GEHL Company reserves the right to make changes or improvements in the design or construction of any part of the unit without incurring the obligation to install such changes on any previously delivered units.

Refer to the abbreviations table located on this page for the various fastener descriptions. Standard attaching hardware torque values are also provided on the inside back cover. Metric torque values shown in the illustrations are in Newton-meters and can be converted to foot-pounds by multiplying by 0.738.

Specific Reference Numbers, indicating a complete assembly, are circled in some illustrations. A small bag, pictured in some illustrations, indicates a seal kit (seals, o-rings, etc.). In the exploded view parts list, additional information may follow the Reference Number.

Serial Number breaks are indicated as follows:

(SN > XXXXX) - indicates Serial Numbers up to and including XXXXX.

(SN YYYYYY >) - indicates Serial Numbers YYYYYY and after.

Unless otherwise specified, all cap screws and bolts are Grade 8.8, cadmium or zinc plated.

NOTE: *The following abbreviations may be used herein:*

ASSD.....	Assembled
ASSY.....	Assembly
CB.....	Carriage Bolt
CP.....	Cotter Pin
CS.....	Cap Screw (Hexagon Head)
FHCS.....	Flat Head Cap Screw
GR.....	Grade
HB.....	Hex Bolt
HLN.....	Hex Lock Nut
HN.....	Hex Nut
HP.....	High Pressure
INS.....	Insert
LN.....	Lock Nut
LT.....	Left
LW.....	Lock Washer
M.....	Metric
MM/mm.....	Millimeter
RT.....	Right
SHCS.....	Socket Head Cap Screw
SLTD.....	Slotted
SN.....	Serial Number or Slotted Nut

TABLE OF CONTENTS

Introduction.....	Inside Front Cover	Hydraulic Installation - Steering.....	42
Table of Contents.....	1	Hydraulic Installation - Lift Arm.....	45
Decal Locations	2	Hydraulic Pump	46
Engine Mounting	5	Burst Valve - Load Stabilizer	48
Engine Block.....	6	Hydraulic Oil Tank	49
Cylinder Head	7	Control Lever Console.....	50
Injection System	8	Pilot Valve - Float Position.....	51
Engine Lubrication	9	Control Valve.....	52
Engine Accessories	10	Lift Cylinder	53
Exhaust Components	11	Tilt Cylinder.....	54
Fuel Tank	12	Instrument Panel	55
Air Filter	13	Lights	56
Oil Cooler	14	Battery.....	57
Throttle Pedal.....	15	Wiring Harnesses.....	58
Frame/Counterweights.....	16	Electric Mounting Kit	59
Hydraulic Motor - 25 mph (40 km/h)	17	Cabin.....	60
Hydraulics Installation - Drive	18	Cabin Door - Left.....	62
Variable Displacement Pump	22	Cabin Door - Right	63
Axles	25	Cabin Trim.....	64
Front Axle.....	27	Operator's Seat	65
Steering (Front Axle).....	28	Operator's Seat - Lower.....	66
Locking Differential (Front Axle)	29	Operator's Seat - Upper	68
Axle Shaft (Front Axle).....	30	Operator's Seat - Attachments.....	69
Wheel Hub & Brakes (Front Axle).....	31	Trim and Engine Cover.....	70
Rear Axle	32	Loader Unit	71
Steering (Rear Axle)	33	Tires	72
Locking Differential (Rear Axle).....	34	Heater.....	73
Axle Shaft (Rear Axle)	35	Air Conditioning.....	74
Wheel Hub (Rear Axle)	36	Quickhitch Assembly.....	76
Gearbox.....	37	Tools	77
Gears	38	Buckets.....	78
Service Brake - Hydraulics	39	Pallet Forks (48").....	79
Parking Brake	40	Alphabetical Index	81
Hydraulic Installation - Pilot Valve.....	41	Numerical Index	83

DECAL LOCATIONS

GENERAL INFORMATION

Decal location information is provided to assist in the proper selection and application of new decals, in the event the original decals become damaged or the machine is repainted. Refer to the listing for the illustration reference number, part number, description and quantity of each decal provided in the kit. Refer to the appropriate illustrations for replacement locations.

To ensure proper selection of the correct replacement decals, compare all of the various closeup location drawings to your machine before starting to refinish the unit. Then circle each decal shown (applicable to your machine) while checking off its part number in the listing. After you have verified all the decals needed for replacement, place any extra unnecessary decals aside for disposal.

NOTE: Refer to the *SAFETY* chapter of the *Operator's Manual* for the specific information provided on all of the various safety decals furnished in the decal kit(s).

NEW DECAL APPLICATION

Surfaces **MUST** be free from dirt, dust, grease and other foreign material before applying the new decal. To apply, remove the smaller portion of the decal backing paper and apply this part of the exposed adhesive backing to the clean surface while maintaining proper position and alignment. Peel the other portion of the backing paper off slowly while applying hand pressure to smooth out the decal surface.



CAUTION

ALWAYS follow safety precautions on decals. Replace the decals if they are damaged, or if the unit is repainted. If repainting, **BE SURE** all applicable decals are affixed to your unit.

PAINT NOTICE

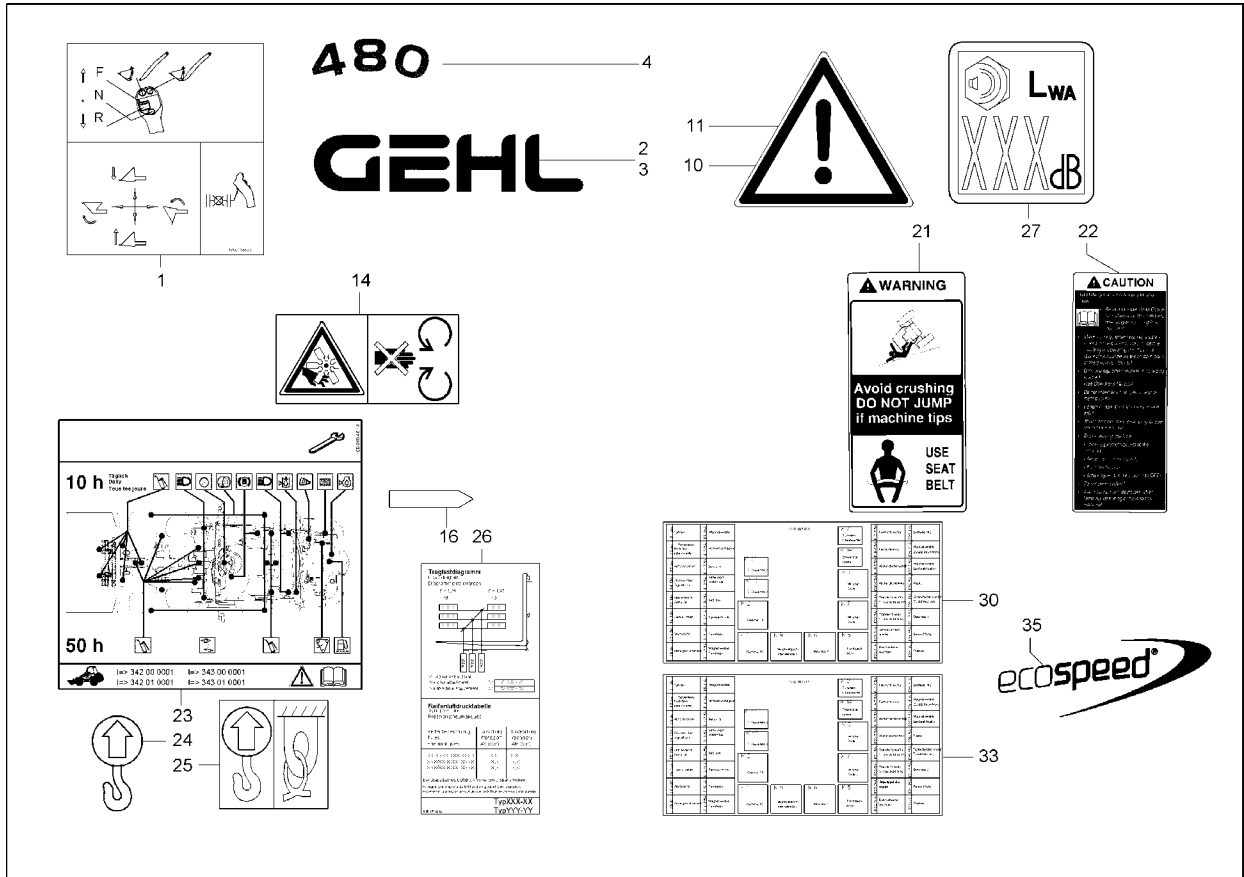
Use this list to order paint for refinishing:

167768	4 qts. AWS Yellow (GEHL)
167758	4 qts. Charcoal Gray (GEHL)
167774	4 qts. Dark Gray (GEHL)
167769	6 (12.8 oz. Spray Cans) AWS Yellow (GEHL)
167775	6 (12.8 oz. Spray Cans) Dark Gray (GEHL)
167760	6 (12.8 oz. Spray Cans) Charcoal Gray (GEHL)

The decal kit for the model 480 All-Wheel-Steer is listed below:

Ref. No.	Part No.	Description & Quantity
	208381	Decal Kit - 480
1	209871	Joystick Controls
2	183935	GEHL - 5.50 x 23.34 (2 Places)
3	183963	GEHL - 3.75 x 15.92
4	174061	480 (2 Places)
10	0004355533	Safety Alert Symbol - Small
11	0004355833	Safety Alert Symbol - Large (2 Places)
14	209451	WARNING - Moving Parts
16	0004351144	Arrow (2 Places)
21	0004359734	WARNING - Use Seat Belt
22	0004359834	CAUTION - Avoid Danger of Serious Injury
23	208614	Maintenance
24	209716	Lift Point (4 Places)
25	209717	Tiedown Point (3 Places)
26	208711	Load Chart
27	208712	Information - Sound Power Level Compliance
30	208714	Fuse Chart
33	208717	Fuse Chart
35	208869	Ecospeed

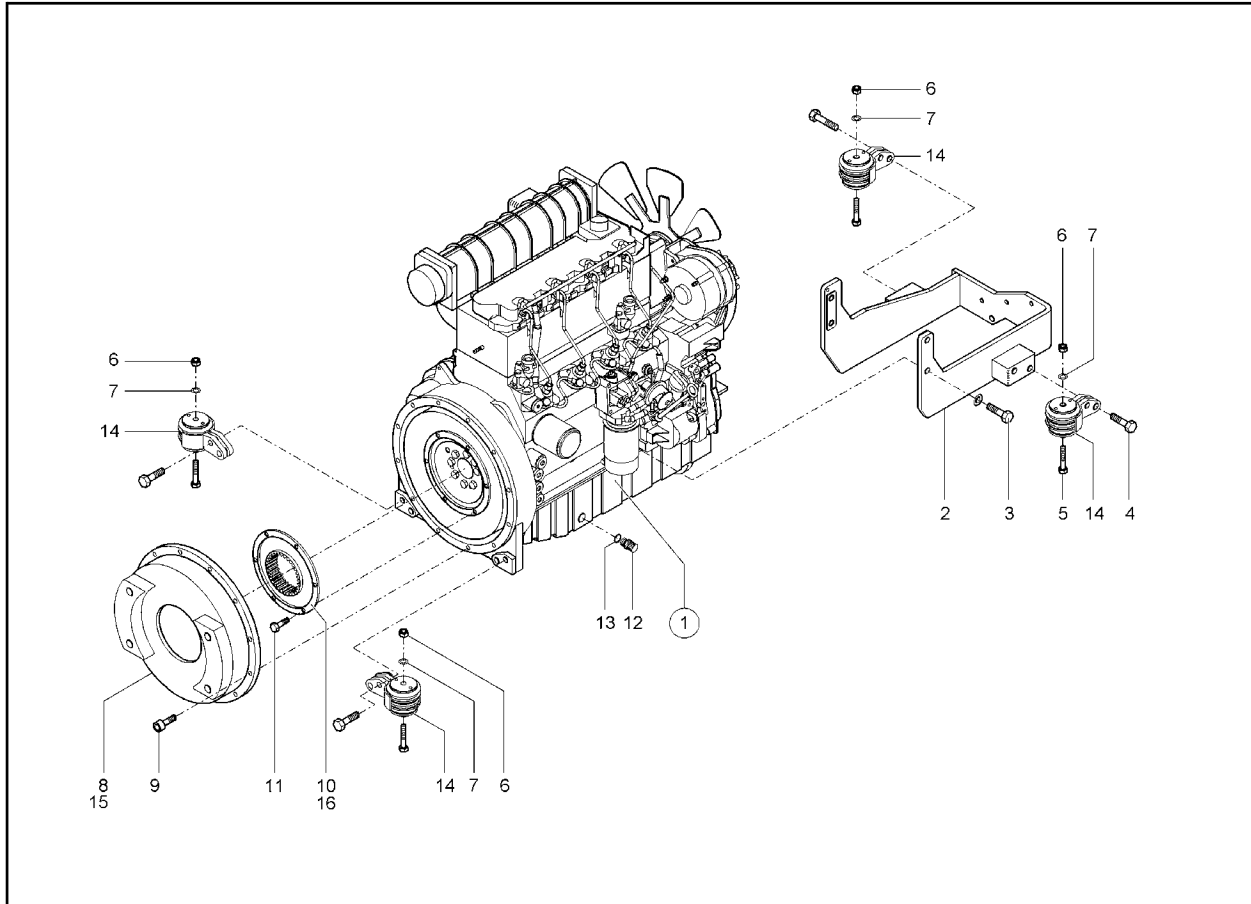
DECAL LOCATIONS



NOTES

480 - ENGINE MOUNTING

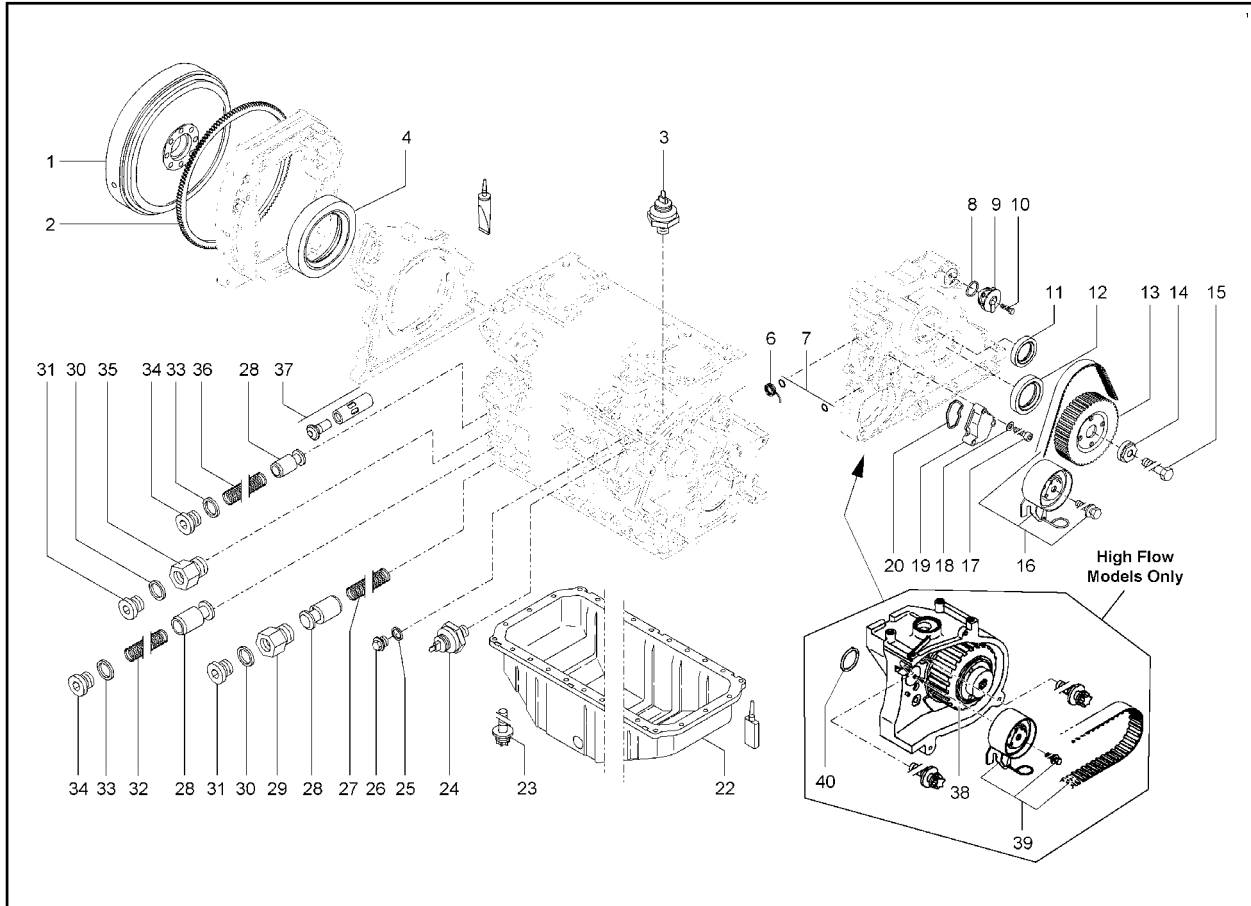
1000129536



Ref. No.	Part No.	Description	Qty.	Ref. No.	Part No.	Description	Qty.
1	208986	DIESEL ENGINE	1	9	651473	SHCS M10-1.25X25 F8.8 ZY	11
2	208479	ENGINE SUPPORT	1	10	208489	COUPLING - 12.5 MPH (20 KM/H)	1
3	7236677952	HEX SCREW	4	11	656094	CS M8-1.25X30 C8.8 ZY	6
4	7234678147	HEX SCREW	4	12	0003618484	DRAIN COUPLING	1
5	651403	HEX SCREW	4	13	7593641029	SEAL RING	1
6	179793	NUT	4	14	208867	ENGINE MOUNTING	4
7	7451680113	WASHER	4	15	208932	FLANGE - 25 MPH (40 KM/H)	1
8	208488	FLANGE - 12.5 MPH (20 KM/H)	1	16	208931	COUPLING - 25 MPH (40 KM/H)	1

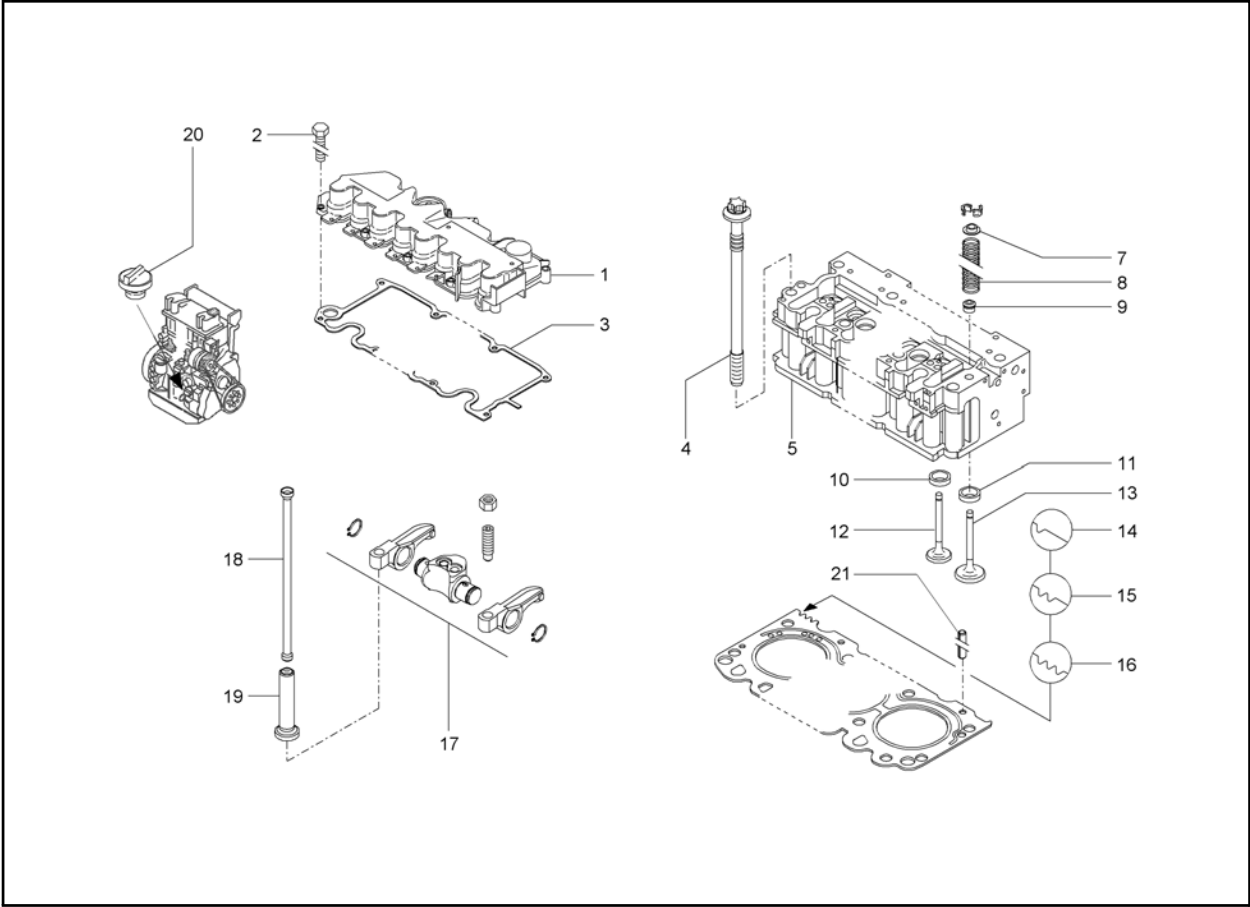
480 - ENGINE BLOCK

1000129586



Ref. No.	Part No.	Description	Qty.	Ref. No.	Part No.	Description	Qty.
1	208864	FLYWHEEL	1	22	0000802897	OIL PAN	1
2	208845	RING GEAR	1	23	0000802645	TORX SCREW	26
3	208679	TEMPERATURE SWITCH	1	24	208826	OIL PRESSURE SWITCH	1
4	0000801363	ROTARY SHAFT SEAL	1	25	208807	SEAL RING	1
6	209125	SPRING	1	26	208810	PLUG	1
7	0000802741	O-RING	2	27	0000802676	COMPRESSION SPRING	1
8	208832	SEAL RING	1	28	0000802673	VALVE	3
9	0000802765	BREATHER VALVE	1	29	208843	FITTING	1
10	208814	HEX SCREW	1	30	208806	SEAL RING	2
11	0000801368	ROTARY SHAFT SEAL	1	31	208817	PLUG	2
12	0000801369	ROTARY SHAFT SEAL	1	32	0000802675	COMPRESSION SPRING	1
13	209110	GEAR	1	33	208809	SEAL RING	2
14	0000802659	WASHER	1	34	208797	PLUG	2
15	0000801898	HEX SCREW	1	35	208842	FITTING	1
16	209126	REPAIR KIT/TIMING BELT	1	36	0000802674	COMPRESSION SPRING	1
17	208824	SCREW	3	37	0000803948	THERMOSTAT	1
18	208799	SPACER	3	38	209134	GEAR	1
19	208850	COVER	1	39	209128	REPAIR KIT/TIMING BELT	1
20	0000802742	SEAL	1	40	209129	SEAL RING	1

480 - CYLINDER HEAD
1000113211



Ref. No.	Part No.	Description	Qty.
1	208991	VALVE COVER	1
2	208815	HEX SCREW	10
3	0000802903	VALVE COVER GASKET	1
4	0000802651	CYLINDER HEAD BOLT	10
5	208992	CYLINDER HEAD	1
7	0000801929	SEAL	8
8	0000802658	COMPRESSION SPRING	8
9	208849	SPRING CAP	8
10	208861	VALVE SEAT	4
11	208993	VALVE SEAT	4

Ref. No.	Part No.	Description	Qty.
12	208862	EXHAUST VALVE	4
13	208994	INTAKE VALVE	4
14	208995	CYLINDER HEAD GASKET	1
15	208996	CYLINDER HEAD GASKET	1
16	208997	CYLINDER HEAD GASKET	1
17	0000801953	TILT LEVER SUPPORT	4
18	0000801918	PUSH ROD	8
19	0000804268	VALVE TAPPET	8
20	0000802648	LOCK	1
21	208844	COTTER PIN	1

Thanks for your reading.

Please click here to download complete manual instantly.

And can also choose other manuals.

Feel free --->write to me with any questions.

Our service email:

manuals007@hotmail.com