

# Running Gear

408, 410, 412,  
415, 417, 612,  
614, 617, 622



**PARTS MANUAL**

**GEHL® AGRICULTURE**

## Introduction

When ordering service parts, specify the correct part number, full description, quantity required, the unit model number and serial number.

The Running Gear model and serial numbers are on a plate located on the forward-facing side of the left rear diagonal brace on the frame assembly. “Right” and “left” are determined from a position standing behind the wagon with the drawbar and tongue in front.

GEHL Company reserves the right to make changes or improvements in the design or construction of any part of the unit without incurring the obligation to install such changes on any previously delivered units.

**NOTE:** *On original tire replacement, Company policy prohibits the sale of replacement tires for all GEHL machinery. Replacement wheel sets are available and tire size information is called out with the wheel sets to facilitate replacement tire selection. ALL REPLACEMENT TIRES MUST BE PURCHASED LOCALLY.*

Refer to the abbreviations table located on this page for the various fastener descriptions. Standard attaching hardware torque values are also provided on the inside back cover.

In the exploded view parts list, Reference Numbers may have additional information following the Reference Number.

Also, a number inside a hexagon will be the torque value required, in foot-pounds, on the associated Reference Number. Items shown in the parts list that do not have Reference Numbers are shown for reference purposes only and are NOT available for purchase.

Unless otherwise specified, all cap screws or bolts are Grade 5, cadmium plated; hexagon nuts for Grade 5 screws or bolts are Grade B; hexagon nuts for other screws or bolts are Grade A.

**NOTE:** *The following abbreviations may be used herein:*

A/R	- As Required
ASSD	- Assembled
ASSY	- Assembly
CB	- Carriage Bolt
CCW	- Counterclockwise
CP	- Cotter Pin
CS	- Cap Screw (Hexagon Head)
CTR	- Center
CW	- Clockwise
DEG	- Degree
DIA	- Diameter
FCS	- Flanged Cap Screw
FHMS	- Flat Head Machine Screw
FL	- Flanged
FLN	- Flanged Lock Nut (Hexagon)
FLS	- Flanged Lock Screw (Hexagon)
FW	- Flat Washer
GA	- Gauge
GR	- Grade
HD	- Hard or Head
HN	- Hex Nut
INCL	- Includes
JT	- Joint
LG	- Large
LN	- Lock Nut
LW	- Lock Washer
LT	- Left
M	- Metric
MM/mm	- Millimeter
NF	- National Fine
PB	- Plow Bolt
PTO	- Power Take Off
RHMS	- Round Head Machine Screw
RPM	- Revolutions Per Minute
RT	- Right
SERR	- Serrated
SHCS	- Socket Head Cap Screw
SHSS	- Socket Head Set Screw
SN	- Serial Number or Slotted Nut
SQ	- Square
T	- Tooth or Teeth
TFS	- Thread Forming Screw
THMS	- Truss Head Machine Screw
THRD	- Thread
WLDMT	- Weldment
#	- Number
	- Torque Required in foot-pounds

# TABLE OF CONTENTS

Introduction .....	Inside Front Cover
Table of Contents .....	1
Decal Locations .....	2-3
408 .....	4-5
410 .....	6-7
412 .....	8-9
412 (Brake Components & Pole Assembly) .....	10-11
415 .....	12-13
415 (Brake Components & Pole Assembly) .....	14-15
417 .....	16-17
417 (Brake Components & Pole Assembly) .....	18-21
612 .....	22-23
614 .....	24-25
612 (Brake Components - 2 & 4-Wheel) .....	26-27
614 (Brake Components - 2 & 4-Wheel ) .....	28-29
612 & 614 (Pole Assembly - 2 & 4-Wheel) .....	30-31
617 .....	32-33
617 (Brake Components - 2 & 4-Wheel & Pole Assembly) .....	34-36
622 .....	37-38
622 (Brake Components - 2 & 4-Wheel & Pole Assembly) .....	39-41
Accessories (Safety Chain) .....	42
Alphabetical Index .....	43
Numerical Index .....	44-50
Notes .....	51-52
Standard Hardware Torque Specifications .....	Inside Back Cover

# CHAPTER 1

## DECAL LOCATIONS

### GENERAL INFORMATION

Decal locations information is provided to assist in the proper selection and application of new decals, in the event the original decals become damaged or the machine is repainted. Refer to the listing for the illustration reference number, part number, description and quantity of each decal provided in the kit. Refer to the appropriate illustrations for replacement locations.

**NOTE:** Refer to the SAFETY chapter in the Operator's manual for specific information provided on the various safety decals furnished in the decal kit(s).

To ensure proper selection of the correct replacement decals, compare all of the various closeup location figures to your machine, before starting to refinish the unit. Then circle each pictured decal (on or otherwise applicable to your machine) while checking off its part number in the listing. After you have verified all the decals needed for replacement, place any unnecessary decals aside for disposal.

### NEW DECAL APPLICATION

Surfaces MUST be free from dirt, dust, grease and other foreign material before applying the new decal. To apply, remove the smaller portion of the decal backing paper and apply this part of the exposed adhesive backing to the clean surface while maintaining proper position and alignment. Peel the other portion of the backing paper off slowly while applying hand pressure to smooth out decal surface.



## CAUTION

**ALWAYS observe safety precautions on decals. If decals become damaged, or if the unit is repainted, replace the decals. If repainting, BE SURE that ALL decals from the kit(s) that apply to your machine are affixed to your unit.**

#### PAINT NOTICE

Use this list to order paint for refinishing:

<b>906315</b>	<b>One Gal. AG Red</b>
<b>906324</b>	<b>One Qt. Light Grey</b>
<b>906316</b>	<b>6 (12 oz. Spray Cans) AG Red</b>
<b>906325</b>	<b>6 (12 oz. Spray Cans) Light Grey</b>

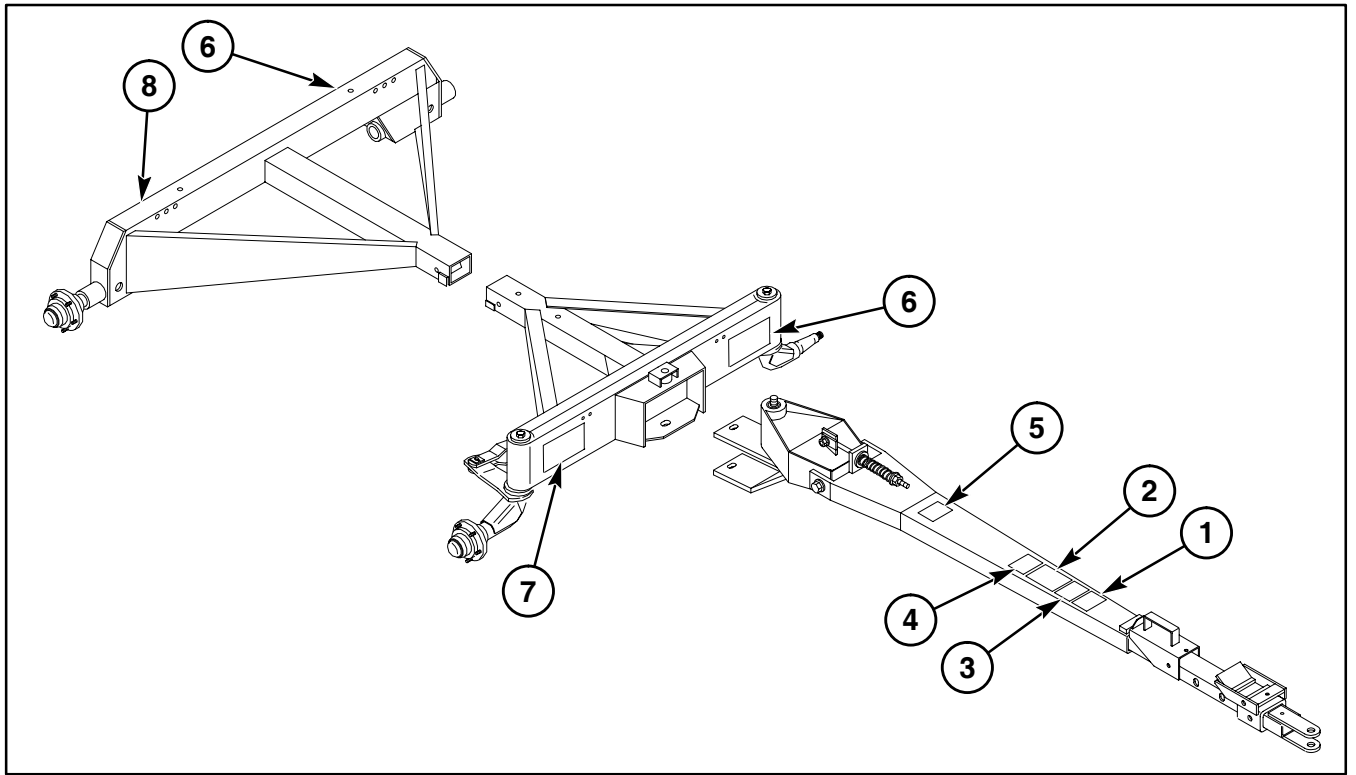
The following decal sets are available for the running gear:

Part Number	Description & Quantity
170509	Decal Set for Running Gear 408
170510	Decal Set for Running Gear 410
170511	Decal Set for Running Gear 412
170512	Decal Set for Running Gear 415
170513	Decal Set for Running Gear 417
170514	Decal Set for Running Gear 612
170515	Decal Set for Running Gear 614
170516	Decal Set for Running Gear 617
170517	Decal Set for Running Gear 622

Order decal sets as necessary for appropriate running gear models. The sets include the following decals:

Ref. No.	Part Number	Description & Quantity
1.	093444	WARNING - Crushing Hazard
2.	093373*	WARNING - Manual
3.	093443	WARNING - Towing
4.	093367*	WARNING - Latching Tongue
5.	170519	WARNING - Spring Tension
6.	170494	Decal - Gehl (2 Places)
7.	170489	Decal - 408 (Included in Kit 170509)
	170490	Decal - 410/612 (Included in Kits 170510 and 170514)
	170491	Decal - 412/614 (Included in Kits 170511 and 170515)
	170492	Decal - 415/617 (Included in Kits 170512 and 170516)
	170493	Decal - 417/622 (Included in Kits 170513 and 170517)
8.	170495	Decal - 16000 Lbs/408 (Included in Kit 170509)
	170496	Decal - 20000 Lbs/410 (Included in Kit 170510)
	170497	Decal - 24000 Lbs/412 (Included in Kit 170511)
	170500	Decal - 30000 Lbs/415 (Included in Kit 170512)
	170498	Decal - 24000 Lbs/612 (Included in Kit 170514)
	170499	Decal - 28000 Lbs/614 (Included in Kit 170515)
	170501	Decal - 34000 Lbs/417 (Included in Kit 170513)
	170502	Decal - 34000 Lbs/617 (Included in Kit 170516)
	170503	Decal - 44000 Lbs/622 (Included in Kit 170517)

\* Decals 093367 and 093373 replace decal marked 1495B



**Thanks for your reading.**

**Please click here to download complete manual instantly.**

**And can also choose other manuals.**

**Feel free --->write to me with any questions.**

**Our service email:**

**manuals007@hotmail.com**