

383Z

Compact Excavator

Beginning Serial Number: AE00465

GEHL®

Form No.
918195

Revision B
06/08



PARTS MANUAL

INTRODUCTION

When ordering service parts, specify the correct part number, full description, quantity required, the unit model number and serial number. For your safety and continued proper operation, use only genuine GEHL service parts.

The model and serial number for this unit are on a tag located on a panel on the front of the cab.

“Right” and “left” are determined from a position sitting on the operator’s seat and facing forward.

GEHL Company reserves the right to make changes or improvements in the design or construction of any part of the unit without incurring the obligation to install such changes on any previously delivered units.

Refer to the abbreviations table located on this page for special parts descriptions. Standard attaching hardware torque values are also provided near the back of this manual. Metric torque values shown in the illustrations are in Newton-meters and are converted to foot-pounds by multiplying by 0.738.

Specific reference numbers, indicating a complete assembly, are circled in some illustrations. A small bag, pictured in some illustrations, indicates a seal kit (seals, o-rings, etc.). In the exploded view parts list, additional information may follow the Reference Number.

Serial number breaks are indicated as follows:

- (SN 999 and before) - indicates serial numbers up to and including 999.
- (SN 1000 - 2000) - indicates serial numbers between 1000 and 2000.
- (SN 999 and up) - indicates serial numbers including 999 and after.

Serial number exceptions and inclusion are indicated as follows:

- (SN 999 and before except 997) - indicates serial numbers up to and including 999, EXCEPT 997.
- (SN 1000 - 2000 except 1996 including 997) - indicates serial numbers between 1000 and 2000, INCLUDING 997 EXCEPT 1996.

- (SN 2001 and up including 1996) - indicates serial numbers including 2001 and after, INCLUDING 1996.

Unless otherwise specified, all cap screws, nuts, and bolts are Grade 8.8, cadmium or zinc plated.

NOTE: *The following abbreviations may be used herein:*

ASSD.....	Assembled
ASY.....	Assembly
ASSY.....	Assembly
AR.....	As Required
CB.....	Carriage Bolt
CP.....	Cotter Pin
CS.....	Cap Screw (Hexagon Head)
CYL.....	Cylinder
DIA.....	Diameter
FHCS.....	Flat Head Cap Screw
GR.....	Grade
HB.....	Hex Bolt
HLN.....	Hex Lock Nut
HN.....	Hex Nut
HP.....	High Pressure
HYD.....	Hydraulic
INS.....	Insert
LH.....	Left Hand
LN.....	Lock Nut
LT.....	Left
LW.....	Lock Washer
M.....	Meter or Meters
MM/mm.....	Millimeter
NPT.....	National Pipe Thread
NSS.....	Not Sold Separately
RH.....	Right Hand
RT.....	Right
SHCS.....	Socket Head Cap Screw
SLTD.....	Slotted
SN.....	Serial Number or Slotted Nut
SQ.....	Square
W/.....	With
W/O.....	Without

NOTES:

TABLE OF CONTENTS

Introduction.....	i	Swivel Joint.....	54
Table of Contents.....	1	Joysticks.....	55
Decal Locations	4	Joysticks.....	56
Diesel Engine.....	9	Valve.....	57
Diesel Engine.....	10	Pilot Op. Check Valve Add. Hydraulics.....	58
Engine Mounts.....	11	ISO/SAE Valve.....	59
Cylinder Head, Valve Cover.....	12	Throttle Auto-Idle Control Valve	
Cylinder Head, Valve Cover.....	13	(Option).....	60
Cylinder Block.....	14	Lock Valve.....	61
Seal, Crankshaft.....	15	Proportional Valve (Option).....	62
Oil Pan	16	Manifold Block.....	63
Camshaft	17	Manifold.....	64
Crankshaft, Piston	18	Accumulator.....	65
Lubrication.....	19	Hydraulic Pump Installation	66
Lubrication.....	20	Boom Cylinder Installation.....	67
Cooling System.....	21	Boom Cylinder.....	68
Fuel Injection Equipment.....	22	Dipper Arm Installation	69
Fuel Injection Equipment.....	23	Dipper Arm Cylinder	70
Air Filter	24	Bucket Operation Long Arm	71
Intake Manifold.....	25	Bucket Cylinder	72
Muffler	26	Boom Offset Cylinder Installation.....	73
Fuel Tank, Plastic	27	Boom Offset Cylinder	74
Fuel Tank, Steel	28	Dozer Blade Installation	75
Fuel Supply	29	Dozer Blade Cylinder	76
Fuel Supply	30	Auxiliary Hydraulics Operation.....	77
Fuel Supply	31	Auxiliary Hydraulics Operation.....	78
Throttle.....	32	Proportional Auxiliary Hydraulic	
Throttle Auto-Idle Control (Option)	33	Control (Option)	80
Throttle Auto-Idle Control (Option)	34	ISO/SAE Valve Installation.....	81
Hydraulic Pump Drive	35	Pilot Pressure	82
Radiator.....	36	Pilot Lines	83
Radiator.....	37	Battery Installation.....	84
Oil Cooler (A/C and Non A/C).....	38	Dashboard	85
Oil Cooler (Non A/C Only)	39	Radio (Option)	86
Oil Cooler (A/C Only).....	40	Horn	87
Turntable Drive Unit Installation.....	41	Relay Box	88
Turntable Drive Unit Installation.....	42	Boom Work Light.....	89
Turntable Drive Unit Installation.....	43	Cab Work Light (Option)	90
Turntable Drive Unit.....	44	Rear Cab Work Light (Option).....	91
Turntable Drive Unit.....	45	Wire Harness Engine Cab (Switches).....	92
Drive Motor Installation	46	Wire Harness Engine Cab (Switches).....	93
Drive Motor	47	Wire Harness Engine Chassis	
Drive Motor	48	(Pump and Valves).....	94
Hydraulic Tank	49	Wire Harness Engine Chassis	
Hydraulic Pump	50	(Pump and Valves).....	95
Hydraulic Pump Disassembled.....	51	Wire Harness Boom Work Light	96
Control Valve 1.....	52	Wire Harness Seat Console.....	97
Control Valve 2.....	53		

TABLE OF CONTENTS

Wire Harness Proportional Control (Option).....	98
Wire Harness Throttle Auto-Idle Control Valve (Option)	99
Drive Assy	100
Track Tensioner	101
Dozer Blade	102
Chassis	103
Lubrication.....	104
Counterweight.....	105
Counterweight (Option).....	106
Engine Hood	107
Seat Console	108
Tank Cover	109
Partition Wall.....	110
Isolation Mat 1	111
Isolation Mat 2.....	112
Cover Chassis	113
Undercarriage Cover.....	114
Boom.....	115
Boom.....	116
Dipper Arm	117
Dipper Arm	118
Cab Mounting	119
Cab Frame.....	120
Canopy Frame.....	121
Cab Door.....	122
Front Window	123
Cab Windows.....	125
Covering.....	126
Wire Harness.....	127
Rotating Beacon (Option).....	128
Mirror.....	129
Operator's Seat	130
Air-Conditioning Housing (Option)	132
Heating.....	133
Air-Conditioning Compressor (Option)...	134
Air-Conditioning Compressor (Option)...	135
Air-Conditioning Housing (Option) Installation	136
Air-Conditioning Housing (Option) Installation	137
Tool Kit.....	138
Numerical Index	198

NOTES:

DECAL LOCATIONS

GENERAL INFORMATION

Decal location information is provided to assist in the proper selection and application of new decals, in the event the original decals become damaged or the machine is repainted. Refer to the listing for the illustration reference number, part number, description and quantity of each decal provided in the kit. Refer to the appropriate illustrations for replacement locations.

To ensure proper selection of the correct replacement decals, compare all of the various closeup location drawings to your machine before starting to refinish the unit. Then circle each decal shown (applicable to your machine) while checking off its part number in the listing. After you have verified all the decals needed for replacement, place any unnecessary decals aside for disposal.

NOTE: Refer to the *SAFETY* chapter of the *Operator's Manual* for specific information provided on the safety decals furnished in the decal kit(s).

NEW DECAL APPLICATION

If there is a decal on a part that is to be replaced, be sure that the decal is applied to the replacement part. Surfaces **MUST** be free from dirt, dust, grease and other foreign material before applying the new decal. To apply, remove the smaller portion of the decal backing paper and apply this part of the exposed adhesive backing to the clean surface while maintaining proper position and alignment. Peel the other portion of the backing paper off slowly while applying hand pressure to smooth out the decal surface.



CAUTION

ALWAYS follow safety precautions on decals. Replace the decals if they are damaged, or if the unit is repainted. If repainting, **BE SURE** all applicable decals are affixed to your unit.

PAINT NOTICE

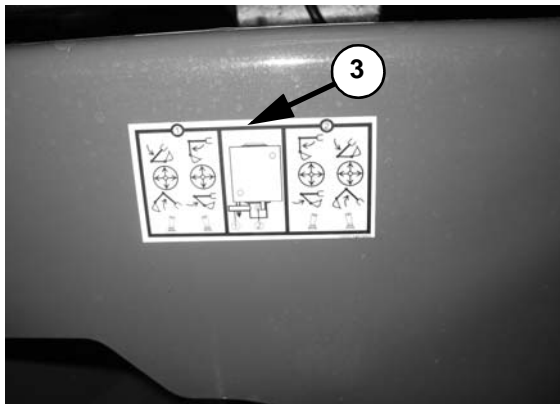
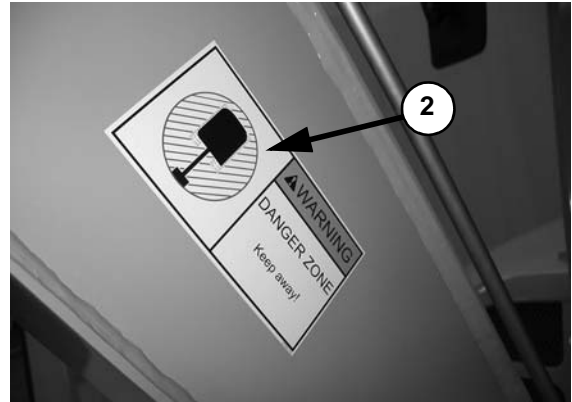
Use this list to order paint for refinishing:

167788	4 qts. Construction Yellow (GEHL)
167780	4 qts. Light Gray (GEHL)
167774	4 qts. Dark Gray (GEHL)
167789	6 (12.8 oz. Spray Cans) Yellow (GEHL)
167775	6 (12.8 oz. Spray Cans) Dark Gray (GEHL)
167781	6 (12.8 oz. Spray Cans) Light Gray (GEHL)

The decal kit for the model 383Z Compact Excavator is listed below:

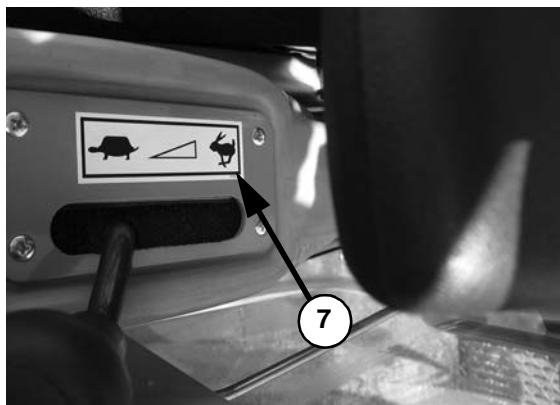
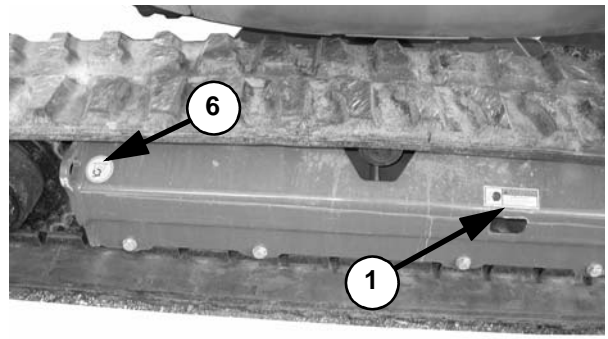
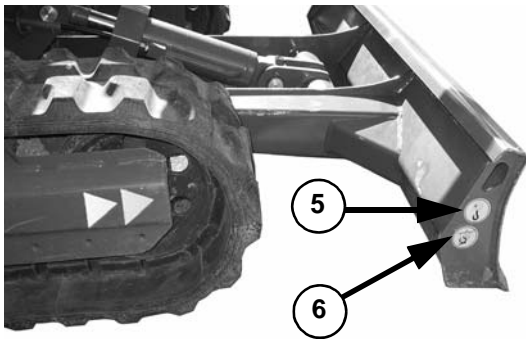
Ref. No.	Part No.	Description & Quantity
	205546	Decal Kit/383Z
1	163975	Decal/Warning Avoid Injury
2	161985	Decal/Warning Keep Away (2 places)
3	177442	Decal SAE/ISO Control
4	177441	Decal/Warning Avoid Injury
5	161981	Decal/Lift Point (2 places)
6	161982	Decal/Tiedown Point (4 places)
7	163974	Decal/Throttle Speed
8	164854	Decal/Warning Avoid Injury
9	177871	Decal/Dozer Blade Up/Down
10	161966	Decal/Hydraulic Oil
11	161969	Decal/Warning Hyd Reservoir
12	163977	Decal/Warning Entanglement Hazard
13	163978	Decal/Warning Hot Surface
14	161987	WARNING - Rotating Fan
15	161965	Decal/Diesel Fuel (2 places)
16	184305	Decal/Gehl 2.75 X 11.67 (white)
17	175296	Decal/383Z (2 places)
18	205854	DECAL (2 places)
19	175546	Decal/Zero Tail (Dark)
20	163976	Decal/Warning Avoid Injury
21	163973	Decal/Warning Mandatory Shutdown
22	177443	Decal/Controls SAE/ISO Lt
23	162450	Decal/Travel Left
24	162451	Decal/Travel Right
25	177444	Decal/Controls SAE/ISO Rt
26	205550	Lifting Capacity
27	161986	Decal/Warning Read Manual
28	205842	Lube Chart
	205894	Lube Chart Canopy
29	184306	Decal/Gehl 4.75 X 20.16 (3 places)
30	204698	Proportional Joystick Operation (not shown)
31	165910	Decal/Safe Stop (not shown)

DECAL LOCATIONS



Both Sides (5 and 6)

Both Sides (6 only)



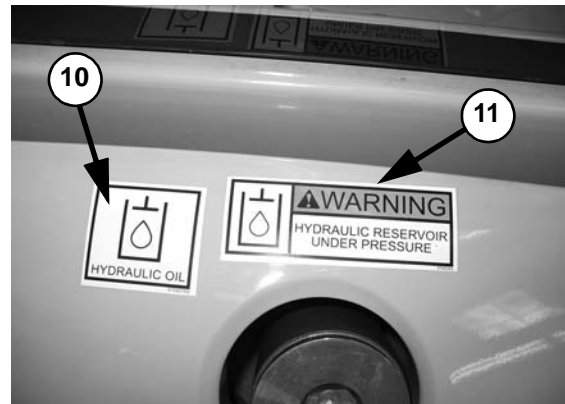
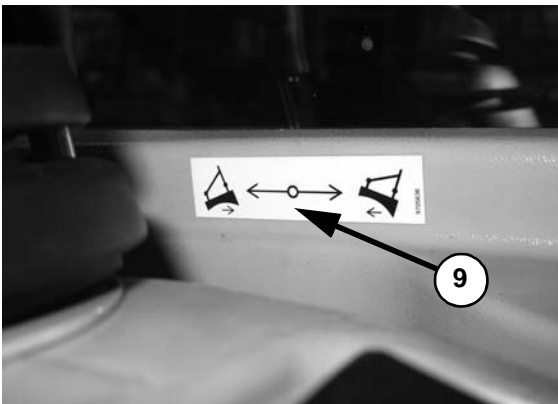
DECAL LOCATIONS

NOTE: The following is a duplicate listing of the decals from page 4. It is provided for convenience when selecting decals from the appropriate illustrations.

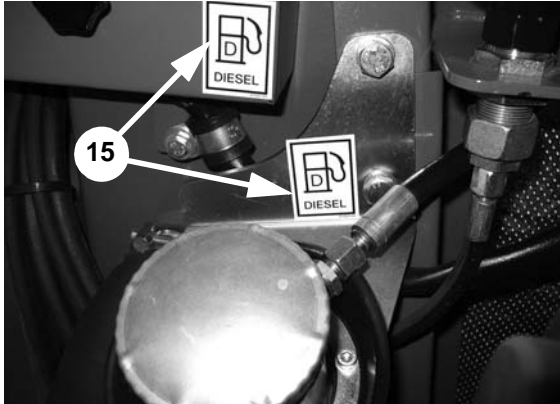
The decal kit for the model 383Z Compact Excavator is listed below:

Ref. No.	Part No.	Description & Quantity
	205546	Decal Kit/383Z
1	163975	Decal/Warning Avoid Injury
2	161985	Decal/Warning Keep Away (2 places)
3	177442	Decal SAE/ISO Control
4	177441	Decal/Warning Avoid Injury
5	161981	Decal/Lift Point (2 places)
6	161982	Decal/Tiedown Point (4 places)
7	163974	Decal/Throttle Speed
8	164854	Decal/Warning Avoid Injury
9	177871	Decal/Dozer Blade Up/Down
10	161966	Decal/Hydraulic Oil
11	161969	Decal/Warning Hyd Reservoir
12	163977	Decal/Warning Entanglement Hazard

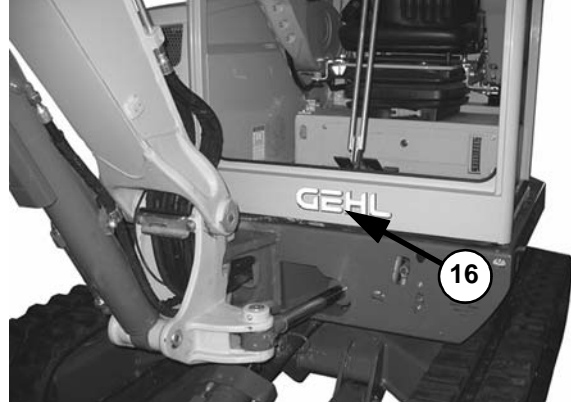
Ref. No.	Part No.	Description & Quantity
13	163978	Decal/Warning Hot Surface
14	161987	WARNING - Rotating Fan
15	161965	Decal/Diesel Fuel (2 places)
16	184305	Decal/Gehl 2.75 X 11.67 (white)
17	175296	Decal/383Z (2 places)
18	205854	DECAL (2 places)
19	175546	Decal/Zero Tail (Dark)
20	163976	Decal/Warning Avoid Injury
21	163973	Decal/Warning Mandatory Shutdown
22	177443	Decal/Controls SAE/ISO Lt
23	162450	Decal/Travel Left
24	162451	Decal/Travel Right
25	177444	Decal/Controls SAE/ISO Rt
26	205550	Lifting Capacity
27	161986	Decal/Warning Read Manual
28	205842	Lube Chart
	205894	Lube Chart Canopy
29	184306	Decal/Gehl 4.75 X 20.16 (3 places)
30	204698	Proportional Joystick Operation (not shown)
31	165910	Decal/Safe Stop (not shown)



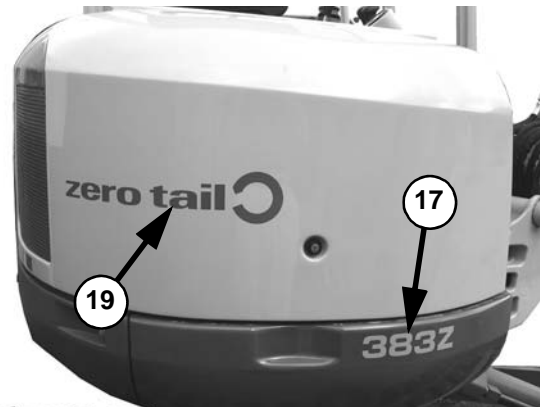
DECAL LOCATIONS



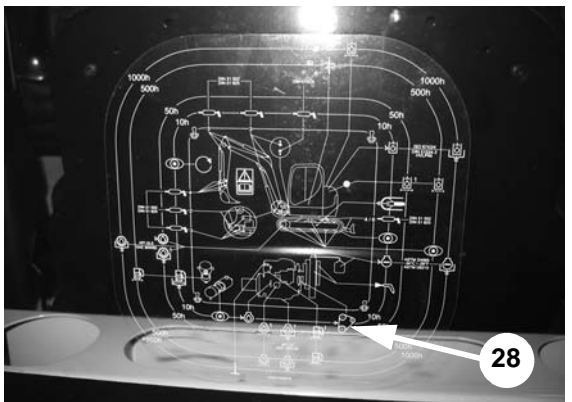
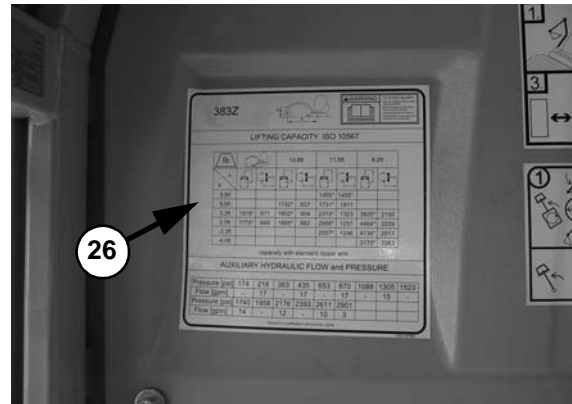
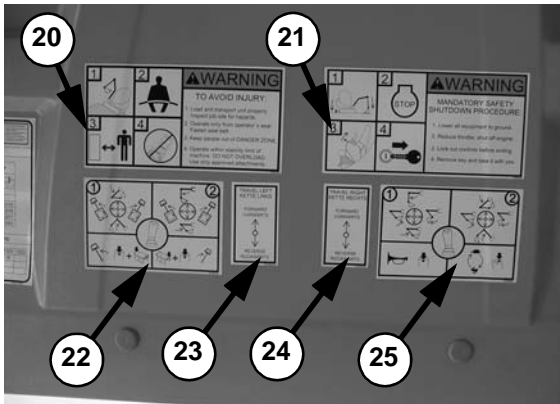
Both Sides (17 and 18)



Both Sides (17 only)



Overhead Decals - positioning may vary by model and cab style



Thanks for your reading.

Please click here to download complete manual instantly.

And can also choose other manuals.

Feel free --->write to me with any questions.

Our service email:

manuals007@hotmail.com