

**GEHL®**

Form No.  
918113  
Revision D  
June 2008

# Model 280

## All-Wheel-Steer Loader

Beginning Serial Number: 341020017



# Parts Manual

# INTRODUCTION

When ordering service parts, specify the correct part number, full description, quantity required, the unit model number and serial number. For your safety and continued proper operation, use only genuine GEHL service parts.

The model and serial number for this unit are on a tag located on a panel on the front of the cab.

“Right” and “left” are determined from a position sitting on the operator’s seat and facing forward.

GEHL Company reserves the right to make changes or improvements in the design or construction of any part of the unit without incurring the obligation to install such changes on any previously delivered units.

Refer to the abbreviations table located on this page for special parts descriptions. Standard attaching hardware torque values are also provided near the back of this manual. Metric torque values shown in the illustrations are in Newton-meters and are converted to foot-pounds by multiplying by 0.738.

Specific reference numbers, indicating a complete assembly, are circled in some illustrations. A small bag, pictured in some illustrations, indicates a seal kit (seals, o-rings, etc.). In the exploded view parts list, additional information may follow the Reference Number.

Serial number breaks are indicated as follows:

- (SN 999 and before) - indicates serial numbers up to and including 999.
- (SN 1000 - 2000) - indicates serial numbers between 1000 and 2000.
- (SN 999 and up) - indicates serial numbers including 999 and after.

Serial number exceptions and inclusion are indicated as follows:

- (SN 999 and before except 997) - indicates serial numbers up to and including 999, EXCEPT 997.
- (SN 1000 - 2000 except 1996 including 997) - indicates serial numbers between 1000 and 2000, INCLUDING 997 EXCEPT 1996.

- (SN 2001 and up including 1996) - indicates serial numbers including 2001 and after, INCLUDING 1996.

Unless otherwise specified, all cap screws, nuts, and bolts are Grade 8.8, cadmium or zinc plated.

**NOTE:** *The following abbreviations may be used herein:*

ASSD.....	Assembled
ASY.....	Assembly
ASSY.....	Assembly
AR.....	As Required
CB.....	Carriage Bolt
CP.....	Cotter Pin
CS.....	Cap Screw (Hexagon Head)
CYL.....	Cylinder
DIA.....	Diameter
FHCS.....	Flat Head Cap Screw
GR.....	Grade
HB.....	Hex Bolt
HLN.....	Hex Lock Nut
HN.....	Hex Nut
HP.....	High Pressure
HYD.....	Hydraulic
INS.....	Insert
LH.....	Left Hand
LN.....	Lock Nut
LT.....	Left
LW.....	Lock Washer
M.....	Meter or Meters
MM/mm.....	Millimeter
NPT.....	National Pipe Thread
NSS.....	Not Sold Separately
RH.....	Right Hand
RT.....	Right
SHCS.....	Socket Head Cap Screw
SLTD.....	Slotted
SN.....	Serial Number or Slotted Nut
SQ.....	Square
W/.....	With
W/O.....	Without

# TABLE OF CONTENTS

Introduction.....	i	Auxiliary Control Circuit.....	44
Table of Contents.....	1	Auxiliary Control Circuit.....	46
Decals.....	2	Auxiliary Control Circuit.....	48
Engine Mounting .....	5	Auxiliary High Flow Circuit (Front) .....	50
Engine Mounting .....	6	Auxiliary High Flow Circuit (Front) .....	52
Engine Block.....	7	Lift Cylinder/Tilt Cylinder.....	56
Engine Block.....	8	Cab - Electrical .....	57
Cylinder Head .....	9	Mount Set - Electrical .....	59
Cylinder Head .....	10	Work Lights .....	60
Lubrication.....	11	Work Lights - Front (Option) .....	61
Lubrication.....	12	Rotating Beacon (Option).....	62
Injection System .....	13	Radio (Option) .....	63
Injection System .....	14	Battery.....	64
Water Pump, Fan & Starter.....	15	Main Harness .....	65
Fuel Tank .....	16	Main Harness .....	66
Air Filter .....	17	Wire Harness - Cab.....	67
Exhaust Components .....	18	Wire Harness - Roof .....	68
Throttle Pedal.....	19	Brake Light .....	69
Radiator.....	20	Tires .....	70
Variable Displacement Pump .....	21	Frame/Counterweights.....	71
Variable Displacement Pump (Cont.).....	22	Lift Arm .....	72
Pressure Limit Relief Valve Hydraulics .....	23	Cab Floor .....	73
Hydraulic Motor .....	24	Trim .....	74
Inching Device.....	25	Trim .....	75
Hydraulic Circuit .....	26	Cab .....	76
Axles .....	27	Cab Door.....	78
Front Axle .....	28	Cab Trim.....	80
Steering (Front and Rear Axle).....	29	Cab Trim (Cont.).....	81
Wheel Hub (Front and Rear Axle).....	30	Operator's Seat (For ROPS Machines).....	82
Locking Differential (Front Axle) .....	31	Operator's Seat (For Cab Machines) .....	83
Rear Axle .....	32	ROPS Protection Bars.....	84
Locking Differential (Rear Axle).....	33	Heater.....	85
Gear Box .....	34	Tools .....	86
Parking Brake .....	35	Buckets.....	87
Hydraulic Installation - Steering.....	36	Pallet Forks (48").....	88
Oil Tank .....	37	Skid-A-Tach Plate.....	89
Hydraulic Installation - Pilot Valve .....	38	Notes .....	90
3rd Hydraulic Circuit.....	39	NUMERICAL INDEX .....	93
Lift Arm Circuit .....	40		
Lift Cylinder .....	41		
Control Valve.....	42		
Pilot Valve - Float Position.....	43		

# DECALS

## GENERAL INFORMATION

Decal location information is provided to assist in the proper selection and application of new decals, in the event the original decals become damaged or the machine is repainted. Refer to the listing for the illustration reference number, part number, description and quantity of each decal provided in the kit. Refer to the appropriate illustrations for replacement locations.

To ensure proper selection of the correct replacement decals, compare all of the various closeup location drawings to your machine before starting to refinish the unit. Then circle each decal shown (applicable to your machine) while checking off its part number in the listing. After you have verified all the decals needed for replacement, place any extra unnecessary decals aside for disposal.

**NOTE:** Refer to the *SAFETY* chapter of the *Operator's Manual* for the specific information provided on all of the various safety decals furnished in the decal kit(s).

## NEW DECAL APPLICATION

If there is a decal on a part that is to be replaced, be sure that the decal is applied to the replacement part. Surfaces **MUST** be free from dirt, dust, grease and other foreign material before applying the new decal. To apply, remove the smaller portion of the decal backing paper and apply this part of the exposed adhesive backing to the clean surface while maintaining proper position and alignment. Peel the other portion of the backing paper off slowly while applying hand pressure to smooth out the decal surface.

### PAINT NOTICE

Use this list to order paint for refinishing:

<b>167768</b>	<b>4 qts. AWS Yellow (GEHL)</b>
<b>167758</b>	<b>4 qts. Charcoal Gray (GEHL)</b>
<b>167774</b>	<b>4 qts. Dark Gray (GEHL)</b>
<b>167769</b>	<b>6 (12.8 oz. Spray Cans) AWS Yellow (GEHL)</b>
<b>167775</b>	<b>6 (12.8 oz. Spray Cans) Dark Gray (GEHL)</b>
<b>167760</b>	<b>6 (12.8 oz. Spray Cans) Charcoal Gray (GEHL)</b>

The decal kit for the model 280 All-Wheel-Steer Loader is listed below:

Ref. No.	Part No.	Description & Quantity
	209149	Decal Kit - 280
2	209302	Charge Safety Box
4	209300	Hydraulic Lockout
6	203278	Joystick Controls - Cab Decal
7	183963	GEHL - 3.75X15.92
8	184306	GEHL - 4.75X20.16 (2 Places)
10	209448	280 (2 Places)
13	0004355533	Safety Alert Symbol (3 Places)
15	209451	WARNING - Moving Parts
16	0004351144	Arrow (2 Places)
21	0004359734	WARNING - Use Seat Belt
22	0004359834	CAUTION - Avoid Danger of Serious Injury
23	209219	Maintenance Chart
24	209716	Lift Point (4 Places)
25	209717	Tiedown point (3 Places)
26	174407	Load Chart Gehl
27	0004353237	Information - Sound power Level Compliance



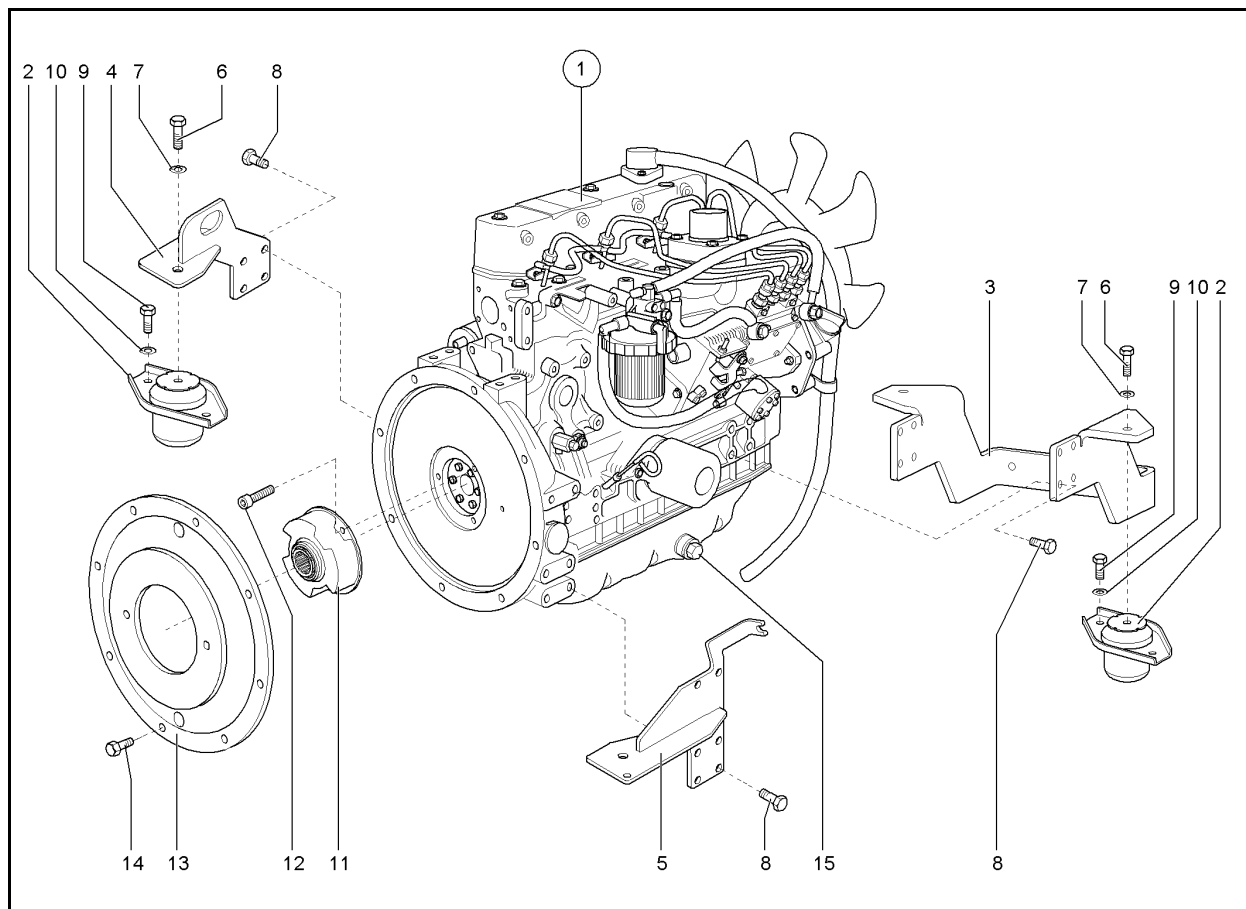
## CAUTION

**ALWAYS** follow safety precautions on decals. Replace the decals if they are damaged, or if the unit is repainted. If repainting, **BE SURE** all applicable decals are affixed to your unit.



**NOTES:**

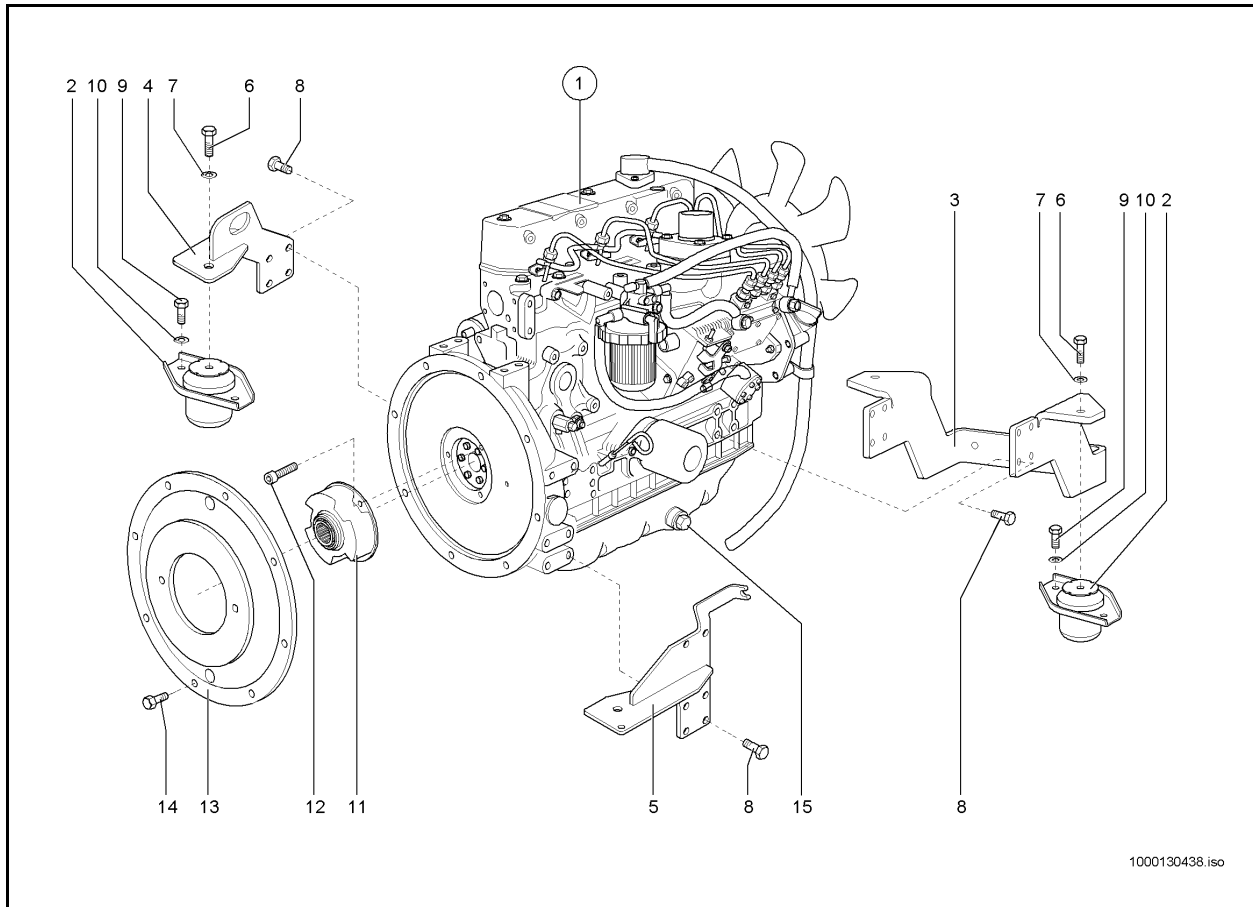
## 280 - ENGINE MOUNTING 1000178993 - (SN 341020591 AND UP)



Ref. No.	Part No.	Description	Qty.	Ref. No.	Part No.	Description	Qty.
1	203253	DIESEL ENGINE COMPLETE	1	9	656006	CS M10-1.5X20 C8.8 ZY	8
2	209152	ENGINE ISO MOUNT	4	10	7451680112	WASHER B10.5-140HV A2C	8
3	209153	ENGINE SUPPORT	1	11	209156	COUPLING	1
4	209154	BRACKET	1	12	209157	SHCS	3
5	209155	BRACKET	1	13	209158	FLANGE	1
6	656008	CS M10-1.5X30 C8.8 ZY	4	14	651393	CS M10-1.5X25 C8.8 ZY	8
7	7462680014	WASHER B10.5	4	15	177239	DRAIN COUPLER	1
8	651393	CS M10-1.5X25 C8.8 ZY	16				

# 280 - ENGINE MOUNTING

## 1000130438 - (SN 341020017-341020590)

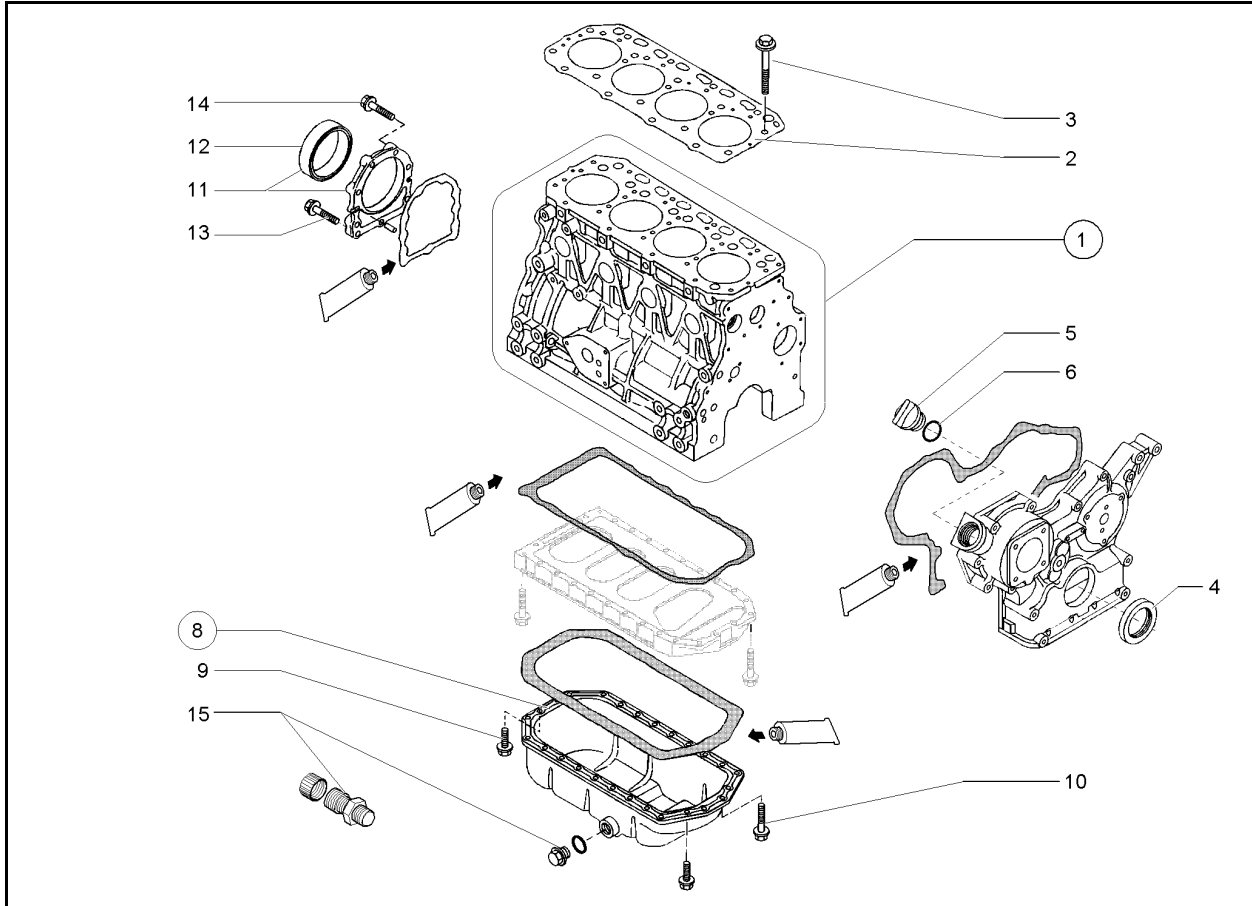


1000130438.iso

Ref. No.	Part No.	Description	Qty.	Ref. No.	Part No.	Description	Qty.
1	207384	DIESEL ENGINE COMPLETE	1	9	656006	CS M10X20	8
2	209152	ENGINE ISO MOUNT	4	10	7451680112	WASHER B10.5-140HV A2C	8
3	209153	ENGINE SUPPORT	1	11	209156	COUPLING	1
4	209154	BRACKET	1	12	209157	SHCS	3
5	209155	BRACKET	1	13	209158	FLANGE	1
6	656008	CS M10-1.5X30 C8.8 ZY	4	14	651393	CS M10-1.5X25 C8.8 ZY	8
7	7462680014	WASHER B10.5	4	15	177239	DRAIN COUPLER	1
8	651393	CS M10-1.5X25 C8.8 ZY	16				



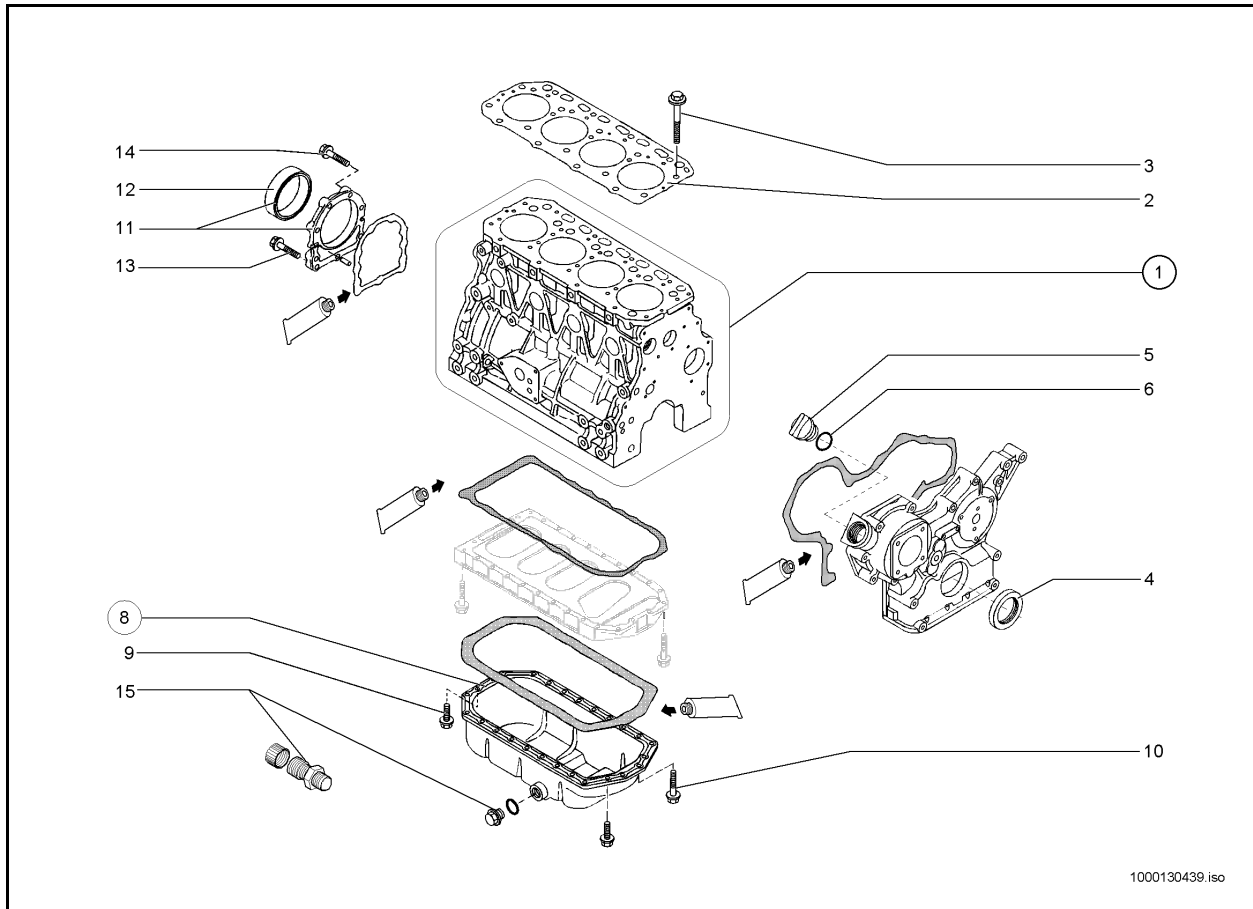
## 280 - ENGINE BLOCK 1000178995 - (SN 341020591 AND UP)



Ref. No.	Part No.	Description	Qty.	Ref. No.	Part No.	Description	Qty.
1	209963	ENGINE BLOCK	1	9	164316	SCREW M8 X 16 PLATED	4
2	425-36006	GASKET/CYLINDER HEAD	1	10	209276	SCREW	24
3	206387	CYLINDER HEAD SCREW	18	11	209587	FLYWHEEL HOUSING	1
4	202472	SHAFT SEAL	1	12	177324	SEAL	1
5	164662	FILLER CAP	1	13	177264	SCREW	3
6	177242	O-RING	1	14	209555	SCREW	6
8	425-36087	OIL PAN ASSY	1	15	177239	DRAIN COUPLER	1

# 280 - ENGINE BLOCK

## 1000130439 - (SN 341020017-341020590)



Ref. No.	Part No.	Description	Qty.	Ref. No.	Part No.	Description	Qty.
1	209963	ENGINE BLOCK	1	9	164316	SCREW M8X16 PLATED	4
2	425-36006	CYLINDER HEAD GASKET	1	10	209276	SCREW	24
3	206387	CYLINDER HEAD SCREW	18	11	209587	FLYWHEEL HOUSING	1
4	177238	SHAFT SEAL	1	12	177324	SEAL	1
5	164662	FILLER CAP	1	13	177264	SCREW	3
6	177242	O-RING	1	14	209555	SCREW	6
8	425-36087	OIL PAN ASSY	1	15	177239	DRAIN COUPLER	1

**Thanks for your reading.**

**Please click here to download complete manual instantly.**

**And can also choose other manuals.**

**Feel free --->write to me with any questions.**

**Our service email:**

**manuals007@hotmail.com**