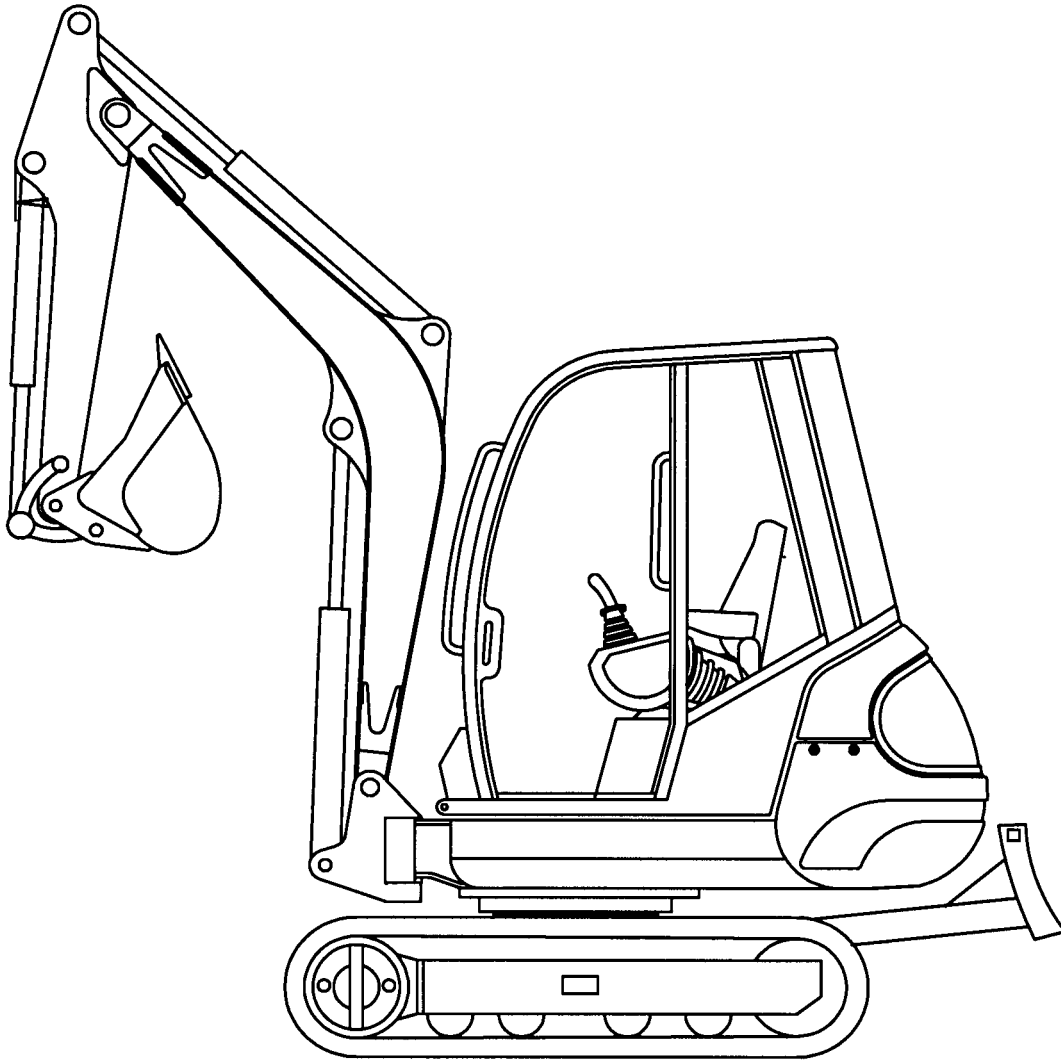


272-292

Form No.
908540

Mini-excavator



PARTS MANUAL

GEHL CONSTRUCTION

Introduction

When ordering service parts, specify the correct part number, full description, quantity required, the unit model number and serial number.

The Mini-excavator model and serial numbers are on a plate located on the lower left front outer side of the cabin (from the driver's perspective).

OUR Company reserves the right to make changes or improvements in the design or construction of any part of the unit without incurring the obligation to install such changes on any previously delivered units.

To ensure continued safe operation, replace damaged or worn-out parts with genuine Factory service parts, BEFORE attempting to operate this equipment.

Refer to the abbreviations table located on this page for the various fastener descriptions.

In the exploded view parts list, Reference numbers marked with an asterisk (*) indicate that the individual parts of the assembly are listed later in that section. Refer to the Table of Contents for locations of specific assemblies.

NOTE: *The following abbreviations may be used herein:*

AR	– As Required
ASSD	– Assembled
ASSY	– Assembly
CB	– Carriage Bolt
CCW	– Counterclockwise
CP	– Cotter Pin
CS	– Cap Screw (Hexagon Head)
CTR	– Center
CW	– Clockwise
DEG	– Degree
DIA	– Diameter
FCHC	
FCS	– Flanged Cap Screw
FHMS	– Flat Head Machine Screw
FL	– Flanged
FLN	– Flanged Lock Nut (Hexagon)
FLS	– Flanged Lock Screw (Hexagon)
FW	– Flat Washer
GA	– Gauge
GR	– Grade
HD	– Hard or Head
HLN	– Hex Lock Nut
HJN	– Hex Jam Nut
HN	– Hex Nut
HS	
INCL	– Includes
INS	
JT	– Joint
LG	– Large
LH	– Left Hand
LN	– Lock Nut
LW	– Lock Washer
M	– Metric
MM/mm	– Millimeter
NF	– National Fine
PB	– Plow Bolt
PTO	– Power Take Off
RH	– Right Hand
RHMS	– Round Head Machine Screw
RPM	– Revolutions Per Minute
RT	– Right
SERR	– Serrated
SHCS	– Socket Head Cap Screw
SHSS	– Socket Head Set Screw
SN	– Serial Number or Slotted Nut
SQ	– Square
SQSS	– Square Head Set Screw
T	– Tooth or Teeth
TFS	– Thread Forming Screw
THMS	– Truss Head Machine Screw
THRD	– Thread
WLDMT	– Weldment
ZO	– Zinc Oxide Plating
#	– Number

Table of Contents

SECTION A: UNDERCARRIAGE5
UNDERCARRIAGE	6
MODEL 272 — UNDERCARRIAGE	6
MODEL 292 — UNDERCARRIAGE	8
MODELS 272-292 — TRACK TENSION	10
MODELS 272-292 — TRACK ROLLER	11
SECTION B: DOZER BLADE13
DOZER BLADE	14
MODELS 272-292 — DOZER BLADE	14
SECTION C: CHASSIS15
CHASSIS	16
MODELS 272-292 — CHASSIS	16
MODELS 272-292 — CHASSIS COVERS	17
MODELS 272-292 — CHASSIS LUBRICATION	18
MODELS 272-292 — HOOD	19
SECTION D: TILT FRAME21
TILT FRAME	22
MODELS 272-292 — TILT FRAME	22
MODELS 272-292 — ISOLATION MATS	23
MODELS 272-292 — VALVE COVER	24
SECTION E: BOOM25
BOOM	26
MODELS 272-292 — BOOM	26
MODELS 272-292 — STICK	28
SECTION F: CABIN31
CABIN	32
MODELS 272-292 — CABIN	32
MODELS 272-292 — FRAME	33
MODELS 272-292 — RADIO KIT	34
MODELS 272-292 — CABLES	35
MODELS 272-292 — FRONT WINDSHIELD	36
MODELS 272-292 — LOWER FRONT WINDSHIELD	38
MODELS 272-292 — UPPER FRONT WINDSHIELD	39
MODELS 272-292 — SIDE WINDOW	40
MODELS 272-292 — REAR WINDOW	41
MODELS 272-292 — CABIN DOOR	42
MODELS 272-292 — LOWER RIGHT SIDE WINDOW	44
MODELS 272-292 — SLIDING SIDE WINDOW	45
MODELS 272-292 — DRIVERS SEAT	46
MODELS 272-292 — CAB HEATING	47
SECTION G: DIESEL ENGINE49
DIESEL ENGINE	50
MODELS 272-292 — DIESEL ENGINE	50
MODELS 272-292 — ENGINE SUSPENSION	51
MODELS 272-292 — COOLING WATER RADIATOR	52

MODELS 272-292 — AIR INTAKE	53
MODELS 272-292 — EXHAUST	54
MODELS 272-292 — FUEL LINE.....	55
MODELS 272-292 — ACCELERATOR	56
MODELS 272-292 — DIESEL TANK.....	57
SECTION H: HYDRAULIC SYSTEM	59
HYDRAULIC SYSTEM	60
MODELS 272-292 — HYDRAULIC PUMP ASSEMBLY.....	60
MODELS 272-292 — HYDRAULIC OIL TANK.....	61
MODELS 272-292 — HYDRAULIC PUMP.....	62
MODELS 272-292 — HYDRAULIC OIL COOLER	63
MODELS 272-292 — HYDRAULIC MOTOR 1.....	64
MODELS 272-292 — HYDRAULIC MOTOR 2.....	65
MODELS 272-292 — TRAVEL MOTOR	66
MODELS 272-292 — TRAVELING MOTOR	67
MODELS 272-292 — CONTROL VALVE.....	68
MODELS 272-292 — CONTROL VALVE.....	69
MODELS 272-292 — PILOT OIL SUPPLY UNIT.....	70
MODEL 272 — SWIVEL JOINT.....	71
MODEL 292 — SWIVEL JOINT.....	72
MODELS 272-292 — TURNING MOTOR.....	73
MODELS 272-292 — TURNING MOTOR.....	74
MODELS 272-292 — TURNING MOTOR.....	75
MODELS 272-292 — VALVE.....	76
MODELS 272-292 — SELECTION VALVE	77
MODELS 272-292 — TRAVELING CHECK VALVE HYDRAULICS	78
MODELS 272-292 — ADDITIONAL CHECK VALVE HYDRAULICS	79
MODELS 272-292 — HAND LEVERS.....	80
MODEL 272 —DOZER BLADE VALVE.....	81
MODEL 292 —DOZER BLADE VALVE.....	82
MODELS 272-292 — DOZER BLADE CYLINDER	83
MODELS 272-292 — BOOM OFFSET CYLINDER	84
MODELS 272-292 — BOOM CYLINDER	85
MODELS 272-292 — STICK CYLINDER	86
MODELS 272-292 — BUCKET CYLINDER	87
MODEL 292 — TILT CYLINDER	88
MODELS 272-292 — HYDRAULIC PUMP INSTALLATION.....	89
MODELS 272-292 — HYDRAULIC OIL COOLER INSTALLATION	90
MODELS 272-292 — PILOT VALVE INSTALLATION.....	91
MODELS 272-292 — HAND LEVER INSTALLATION.....	92
MODELS 272-292 — PILOT OIL SUPPLY UNIT INSTALLATION.....	93
MODEL 272 — TRAVELING GEAR INSTALLATION	94
MODEL 292 — TRAVELING GEAR INSTALLATION	95
MODELS 272-292 — TURNING MOTOR INSTALLATION.....	96
MODELS 272-292 — BOOM OFFSET CYLINDER INSTALLATION	97
MODELS 272-292 — TILT CYLINDER INSTALLATION.....	98
MODEL 272 — DOZER BLADE INSTALLATION.....	99
MODEL 292 — DOZER BLADE INSTALLATION.....	100
MODELS 272-292 — BOOM INSTALLATION.....	101
MODELS 272-292 — ADDITIONAL HYDRAULIC INSTALLATION.....	102

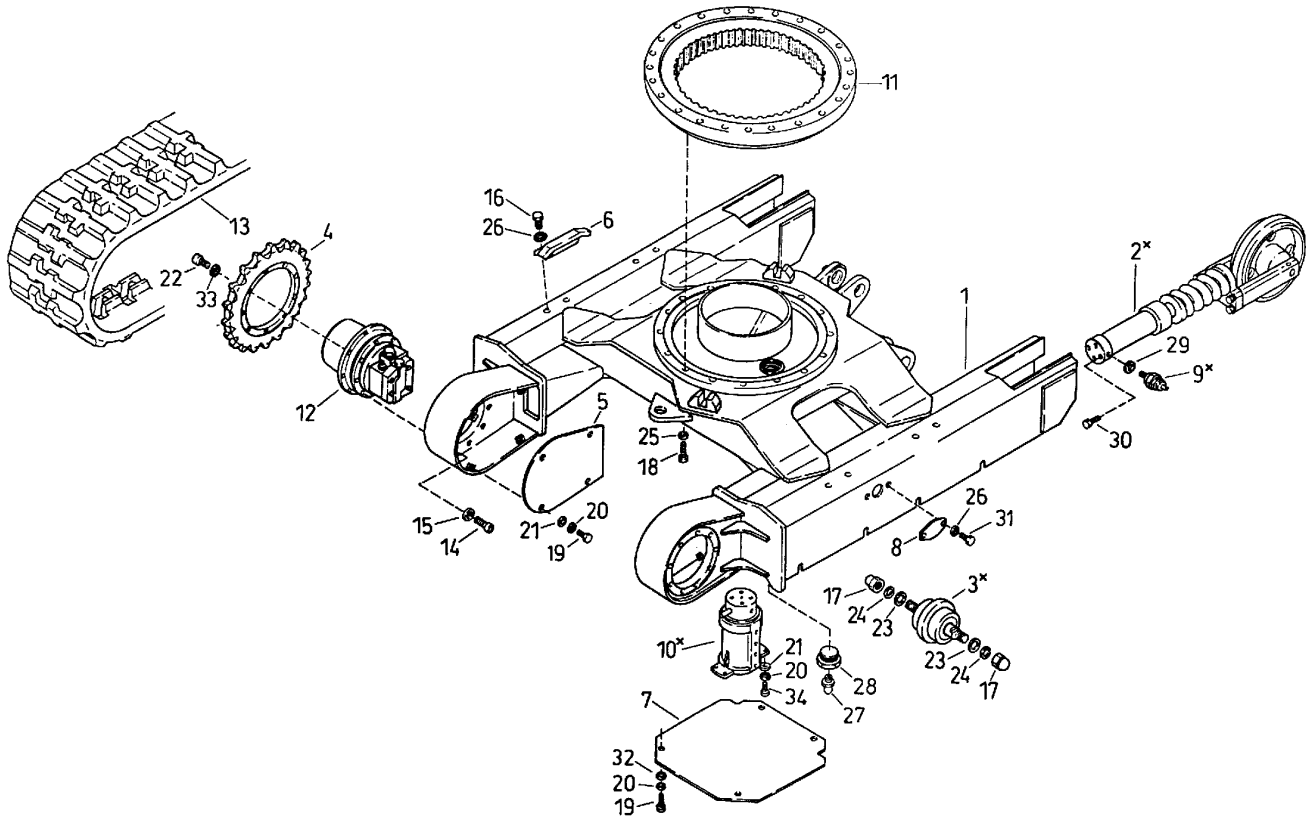
SECTION I: ELECTRICAL SYSTEM103
ELECTRICAL SYSTEM104
MODELS 272-292 — ELECTRICAL INSTALLATION 1	104
MODELS 272-292 — ELECTRICAL INSTALLATION 2	105
MODELS 272-292 — BATTERY INSTALLATION	106
MODELS 272-292 — CONTROL BOARD	107
MODELS 272-292 — RELAY BOX	108
MODELS 272-292 — HEADLIGHTS 1	109
MODELS 272-292 — HEADLIGHTS 2	110
MODELS 272-292 — HORN	111
SECTION J: TOOLS113
TOOLS114
MODELS 272-292 — TOOLS	114
SECTION K: DECALS115
DECALS116
MODEL 272 — DECALS	116
MODEL 292 — DECALS	117

SECTION A: UNDERCARRIAGE

UNDERCARRIAGE	6
MODEL 272 — UNDERCARRIAGE	6
MODEL 292 — UNDERCARRIAGE	8
MODELS 272-292 — TRACK TENSION.....	10
MODELS 272-292 — TRACK ROLLER.....	11

SECTION A: UNDERCARRIAGE

**MODELS 272-292 MINI-EXCAVATOR
UNDERCARRIAGE
MODEL 272 — UNDERCARRIAGE**



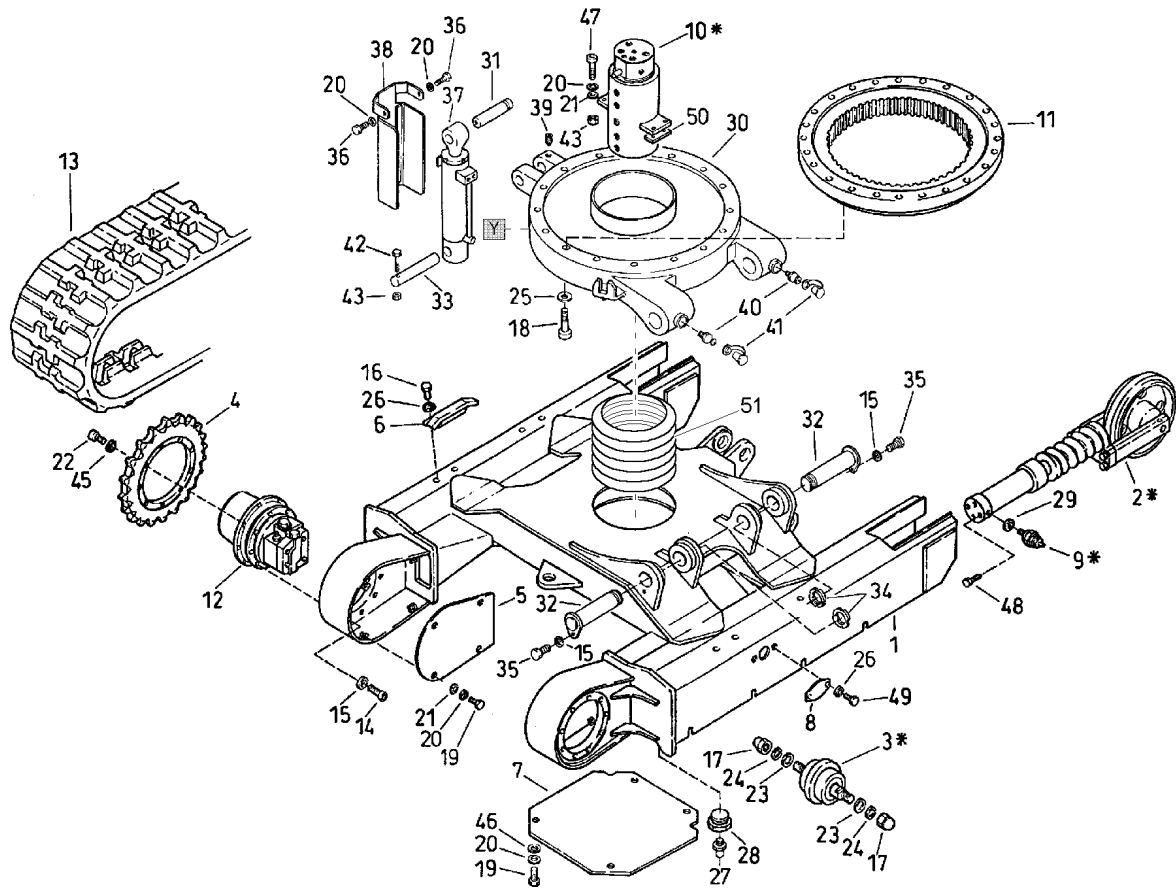
ET2720100

* Reference numbers marked with an asterisk (*) indicate that the individual parts of the assembly are listed later in this section. Refer to the Table of Contents for locations of specific assemblies.

**MODELS 272-292 MINI-EXCAVATOR
UNDERCARRIAGE
MODEL 272 — UNDERCARRIAGE**

Ref. No.	Part No.	Description	Qty. Req.	Ref. No.	Part No.	Description	Qty. Req.
1	162523	UNDERCARRIAGE	1	18	651413	CS M16-2.0 X 60 F 10.9 ZO	16
2	160795	TRACK TENSIONING	2	19	656001	CS M8-1.2 X 20 C 8.8 ZO	12
3	160794	TRACK ROLLER ASSEMBLY	8	20	161676	LOCKWASHER S8	16
4	160710	SPROCKET	2	21	161661	WASHER/GR A 8.4 ZO	12
5	162330	COVER	2	22	651483	SHCS HS M12-1.7 X 35 10.9 ZO D912	18
6	162332	CHAIN GUIDANCE	4	23	161653	WASHER/ROUND HI-TENS 21 DIN6916	16
7	162329	COVER	1	24	656143	LW REG M20 ZO	16
8	162331	COVER	2	25	161647	WASHER/ROUND HI-TENS 17	16
9	160638	NON RETURN VALVE	2	26	161669	LOCKWASHER S10	12
10	162527	SWIVEL JOINT	1	27	161412	LUBRICATION FITTING	1
11	162522	TURNTABLE	1	28	161417	PLUG	1
12	160723	TRAVEL GEAR	2	29	161578	SEAL	2
13	160737	RUBBER TRACK	1	30	651395	CS M10-1.5 X 30 C 10.9 ZO	4
14	656148	SHCS HS 12-1.75X40 10.9 ZO	18	31	656090	CS M10-1.5 X 16 C 8.8 ZO	4
15	161670	LOCKWASHER S12	18	32	161667	WASHER/GR A 8.4 ZO	4
16	651391	CS M10-1.5 X 20 C 8.8 ZO	8	33	161624	LW SPRING B12 DIN 7982	18
17	161617	NUT/HEX DOMED CAP M20	16	34	162032	SCREW	4

**MODELS 272-292 MINI-EXCAVATOR
UNDERCARRIAGE
MODEL 292 — UNDERCARRIAGE**



ET2720105

* Reference numbers marked with an asterisk (*) indicate that the individual parts of the assembly are listed later in this section. Refer to the Table of Contents for locations of specific assemblies.

Thanks for your reading.

Please click here to download complete manual instantly.

And can also choose other manuals.

Feel free --->write to me with any questions.

Our service email:

manuals007@hotmail.com