

Form No.
909785

253

Compact Excavator

PARTS MANUAL

GEHL[®]

Introduction

When ordering service parts, specify the correct part number, full description, quantity required, the unit model number and serial number. For your safety and continued proper operation, use only genuine GEHL service parts.

The model and serial number for this unit are on a tag located on a panel on the front of the cabin.

“Right” and “left” are determined from a position sitting on the seat and facing forward. From this position, the cab is on the “left” and the hydraulic valve compartment is on the “right”.

GEHL® Company reserves the right to make changes or improvements in the design or construction of any part of the unit without incurring the obligation to install such changes on any previously delivered units.

Refer to the abbreviations table located on this page for the various fastener descriptions. Standard attaching hardware torque values are also provided on the inside back cover. Metric torque values shown in the illustra-

tions are in Newton-meters and can be converted to Foot-pounds by multiplying by 0.738.

In the exploded view parts list, Reference Numbers may have additional information following the Reference Number.

Unless otherwise specified, all Cap Screws or Bolts are Grade 5, cadmium or zinc plated; Hexagon Nuts for Grade 5 Screws or Bolts are Grade B; Hexagon Nuts for other Screws or Bolts are Grade A.

NOTE: *The following abbreviations may be used herein:*

CP	– Cotter Pin
CS	– Cap Screw (Hexagon Head)
FHCS	– Flat Head Cap Screw
HN	– Hex Nut
LN	– Lock Nut
LT	– Left Hand
M	– Metric
MM/mm	– Millimeter
RT	– Right

TABLE OF CONTENTS

Introduction	Inside Front Cover	Exhaust Manifold	52
Decal Locations	2-7	Intake Manifold	53
Undercarriage	8	Pump Drive	54
Track Tensioning	9	Hydraulic Oil Tank	55
Track-Supporting Roller	10	Oil Cooler	56
Track Roller	11	Hydraulic Pump	57
Dozer Blade	12	Travel Motors	58
Uppercarriage	13	Swivel Joint	59-60
Lubrication Block	14	Turning Gear	61
Rear Wall	15	Control Valve	62-63
Counterweight	16	Pilot Oil Supply	64-65
Valve Cover	17	Pilot Operation Check Valve	66
Lifting Arm	18	Dozer Blade Reversing Valve	67
Short Dipper Arm	19	Lock Valve	68
Long Dipper Arm	20	Manifold Block	69
Connecting Link	21	Joysticks	70
Cabin Windows	22	Traveling Valve	71
Windshield	23	Auxiliary Hydraulics	72
Cabin Door	24	Lifting Arm Cylinder	73
Cabin Frame	25-27	Dipper Arm Cylinder	74
Open Canopy	28	Dipper Cylinder	75
Sash Window	29	Swivel Cylinder	76
Cabin Wiring	30	Dozer Blade Cylinder	77
Operator's Seat	31	Hoses, Hydraulic Oil Cooler	78
Cabin Floor	32	Hoses, Hydraulic Pump	79
Cabin Heating	33	Hoses, Traveling Gears	80
Engine Mounts	34	Hoses, Turning Gear	81
Radiator	35	Hoses, Swivel Cylinder	82
Air Cleaner	36	Hoses, Dozer Blade Cylinder	83
Exhaust	37	Hoses, Joysticks	84
Fuel Tank	38	Hoses, Traveling Valve	85
Fuel System	39	Tubes, Control Valve	86
Throttle	40	Tubes, Short Liftarm	87
Oil Pump, Pan & Filter	41	Tubes, Long Liftarm	88
Cylinder Head	42	Battery	89
Stop Solenoid	43	Engine Harness	90
Fuel Injection Pump	44	Harness, Right Armrest	91
Fuel Injection	45	Harness, Uppercarriage	92
Fuel Filter	46	Headlight	93
Fuel Pump	47	Tool Kit	94
Alternator	48	Tool Box, Grease Gun Bracket	95
Starter	49	Alphabetical Index	96
Thermostat	50	Numerical Index	97-
Water Pump & Fan	51	Torque Chart	Inside Rear Cover

DECAL LOCATIONS

GENERAL INFORMATION

Decal location information is provided to assist in the proper selection and application of new decals, in the event the original decals become damaged or the machine is repainted. Refer to the listing for the illustration reference number, part number, description and quantity of each decal provided in the kit. Refer to the appropriate illustrations for replacement locations.

To ensure proper selection of the correct replacement decals, compare all of the various closeup location drawings to your machine before starting to refinish the unit. Then circle each shown decal (applicable to your machine) while checking off its part number in the listing. After you have verified all the decals needed for replacement, place any extra unnecessary decals aside for disposal.

NOTE: Refer to the SAFETY chapter of the Operator's Manual for the specific information provided on all of the various safety decals furnished in the decal kit(s).

NEW DECAL APPLICATION

Surfaces MUST be free from dirt, dust, grease and other foreign material before applying the new decal. To apply, remove the smaller portion of the decal backing paper and apply this part of the exposed adhesive backing to the clean surface while maintaining proper position and alignment. Peel the other portion of the backing paper off slowly while applying hand pressure to smooth out the decal surface.



CAUTION

ALWAYS follow safety precautions on decals. Replace the decals if they are damaged, or if the unit is repainted. If repainting, BE SURE all applicable decals are affixed to your unit.

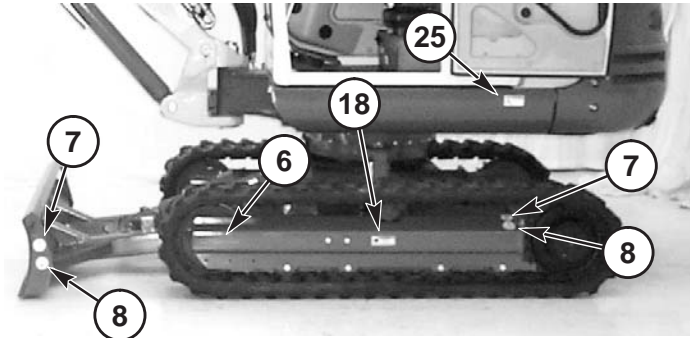
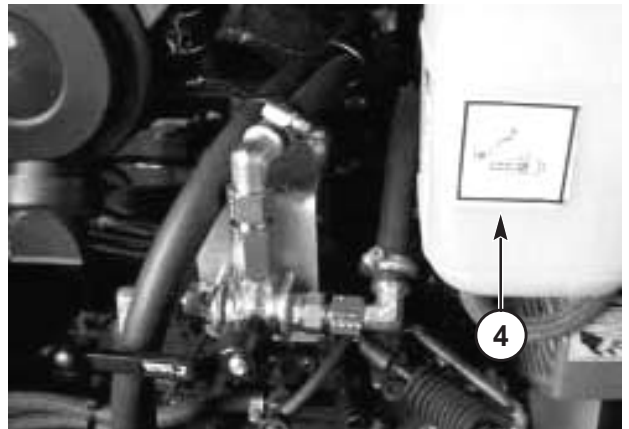
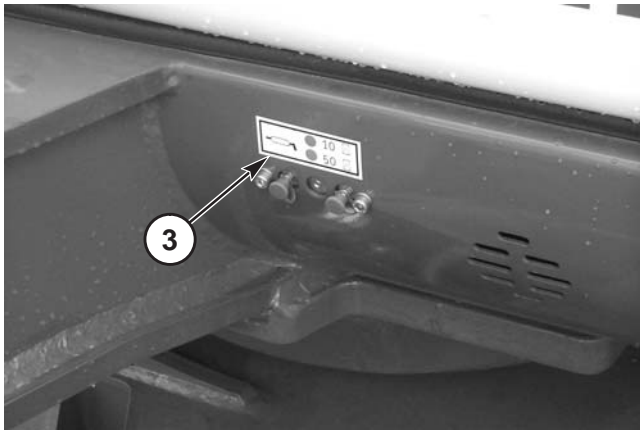
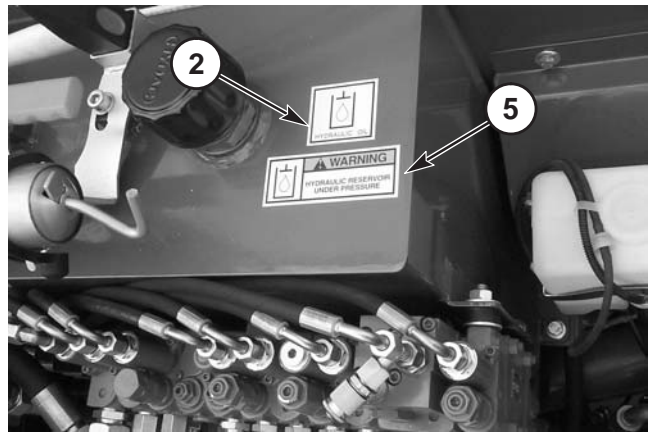
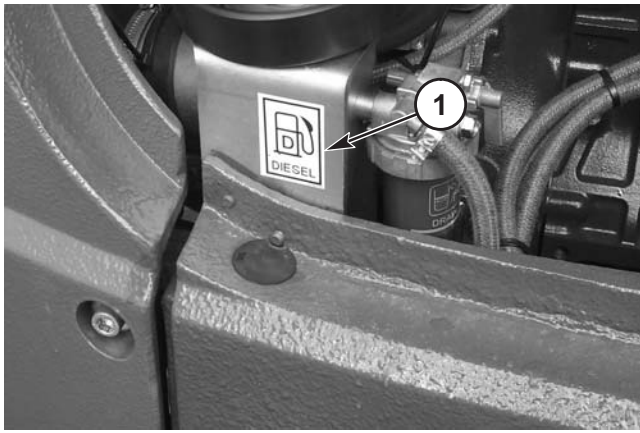
PAINT NOTICE

Use this list to order paint for refinishing:

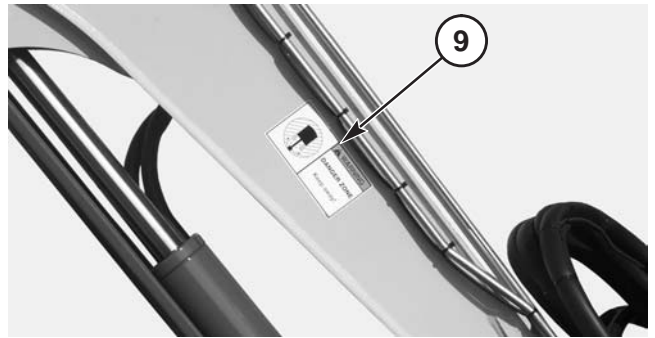
906213	One Gal. Construction Yellow
906323	One Qt. Charcoal Grey
906317	One Gal. Charcoal Grey
906214	6 (12 oz. Spray Cans) Yellow
906318	6 (12 oz. Spray Cans) Grey

The decal kit for the model 253 Compact Excavator is listed below:

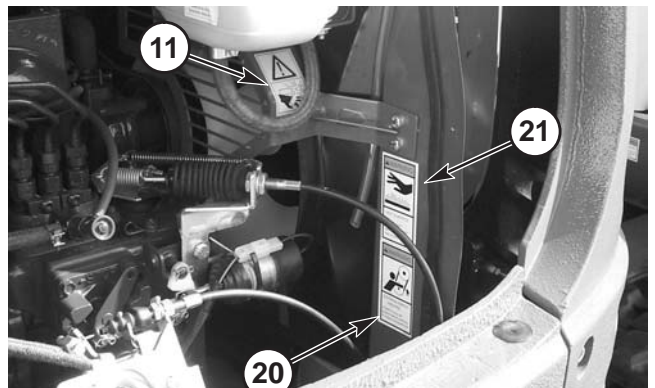
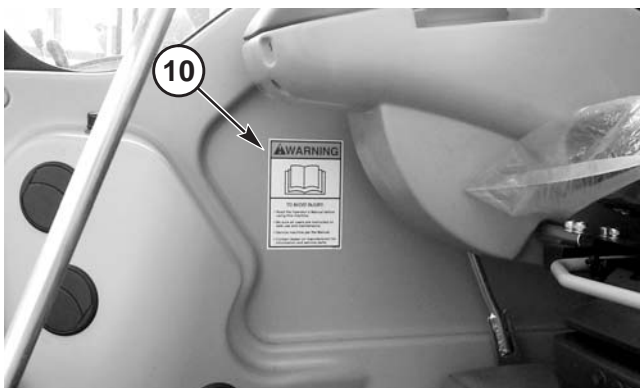
Ref. No.	Part No.	Description & Quantity
	163984	Decal Kit - 253
1	161965	Diesel Fuel
2	161966	Hydraulic Oil
3	161967	Lubrication
4	161968	Heater Valve (cab models only)
5	161969	WARNING – Hydraulic Reservoir
6	161970	Arrow (2 places)
7	161981	Lift Point (4 places)
8	161982	Tiedown Point (4 places)
9	161985	WARNING – Keep Away (2 places)
10	161986	WARNING – Read Manual
11	161987	WARNING – Engine Fan
12	162450	Travel – Left
13	162451	Travel – Right
14	162452	Right Joystick Control
15	162453	Left Joystick Control
16	162832	Hydraulics Compartment Latch
17	163973	WARNING – Mandatory Shutdown
18	163975	WARNING – Avoid Injury (2 places)
19	163976	WARNING – Avoid Injury
20	163977	WARNING – Entanglement Hazard
21	163978	WARNING – Hot Surface
22	163979	Valve Position
23	163992	Left Graphic
24	163993	Right Graphic
25	163994	WARNING – Counterweight (2 places)
26	163995	Dozer Blade Control
27	163996	Bypass Ball Valve
28	164853	Engine Compartment Latch
29	164854	WARNING – Avoid Injury
30	165898	Manual Throttle
31	165906	Glow plug
32	159519	GEHL
33	L82282	GEHL (4 places, 3 places on canopy models)
34	164987	253 (2 places)



Both Sides

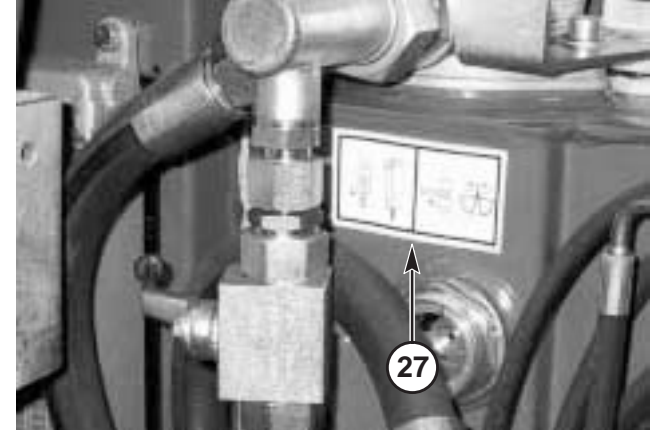
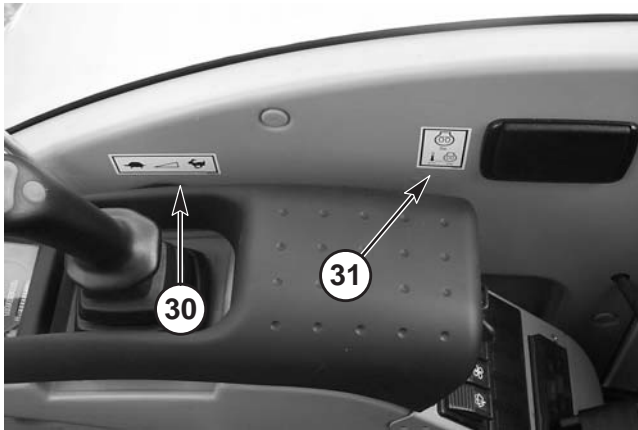
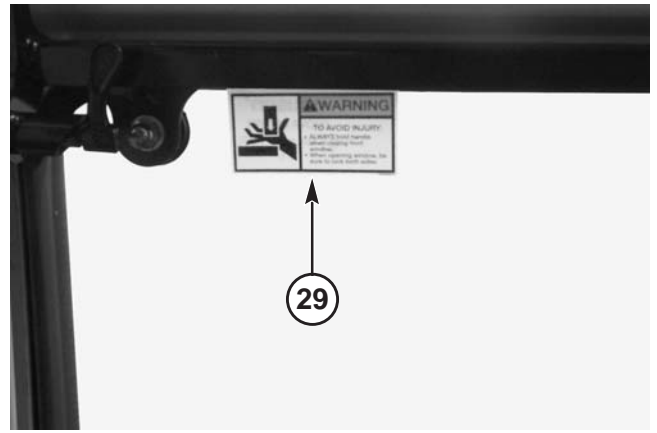
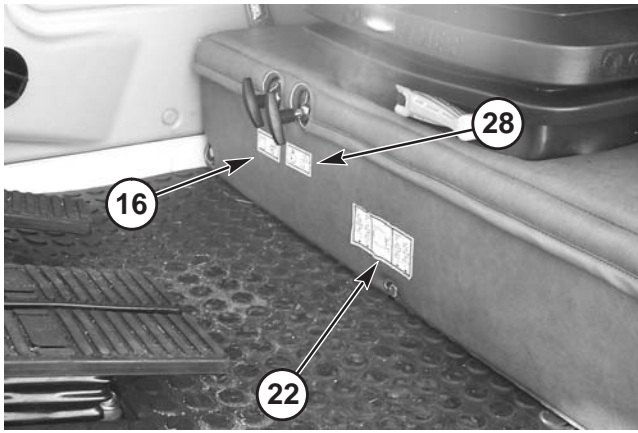


Both Sides



The decal listing has been repeated for your convenience.

Ref. No.	Part No.	Description & Quantity
	163984	Decal Kit - 253
1	161965	Diesel Fuel
2	161966	Hydraulic Oil
3	161967	Lubrication
4	161968	Heater Valve (cab models only)
5	161969	WARNING – Hydraulic Reservoir
6	161970	Arrow (2 places)
7	161981	Lift Point (4 places)
8	161982	Tiedown Point (4 places)
9	161985	WARNING – Keep Away (2 places)
10	161986	WARNING – Read Manual
11	161987	WARNING – Engine Fan
12	162450	Travel – Left
13	162451	Travel – Right
14	162452	Right Joystick Control
15	162453	Left Joystick Control
16	162832	Hydraulics Compartment Latch
17	163973	WARNING – Mandatory Shutdown
18	163975	WARNING – Avoid Injury (2 places)
19	163976	WARNING – Avoid Injury
20	163977	WARNING – Entanglement Hazard
21	163978	WARNING – Hot Surface
22	163979	Valve Position
23	163992	Left Graphic
24	163993	Right Graphic
25	163994	WARNING – Counterweight (2 places)
26	163995	Dozer Blade Control
27	163996	Bypass Ball Valve
28	164853	Engine Compartment Latch
29	164854	WARNING – Avoid Injury
30	165898	Manual Throttle
31	165906	Glow plug
32	159519	GEHL
33	L82282	GEHL (4 places, 3 places on canopy models)
34	164987	253 (2 places)



Overhead Panel Decals – positioning may vary by model and cabin style

1.	2.	<p>⚠ WARNING</p> <p>MANDATORY SAFETY SHUTDOWN PROCEDURE</p> <p>1. Lower all equipment to ground. 2. Reduce throttle; shut off engine. 3. Lock out controls before exiting. 4. Remove key and take it with you.</p>
3.	4.	

9705272G

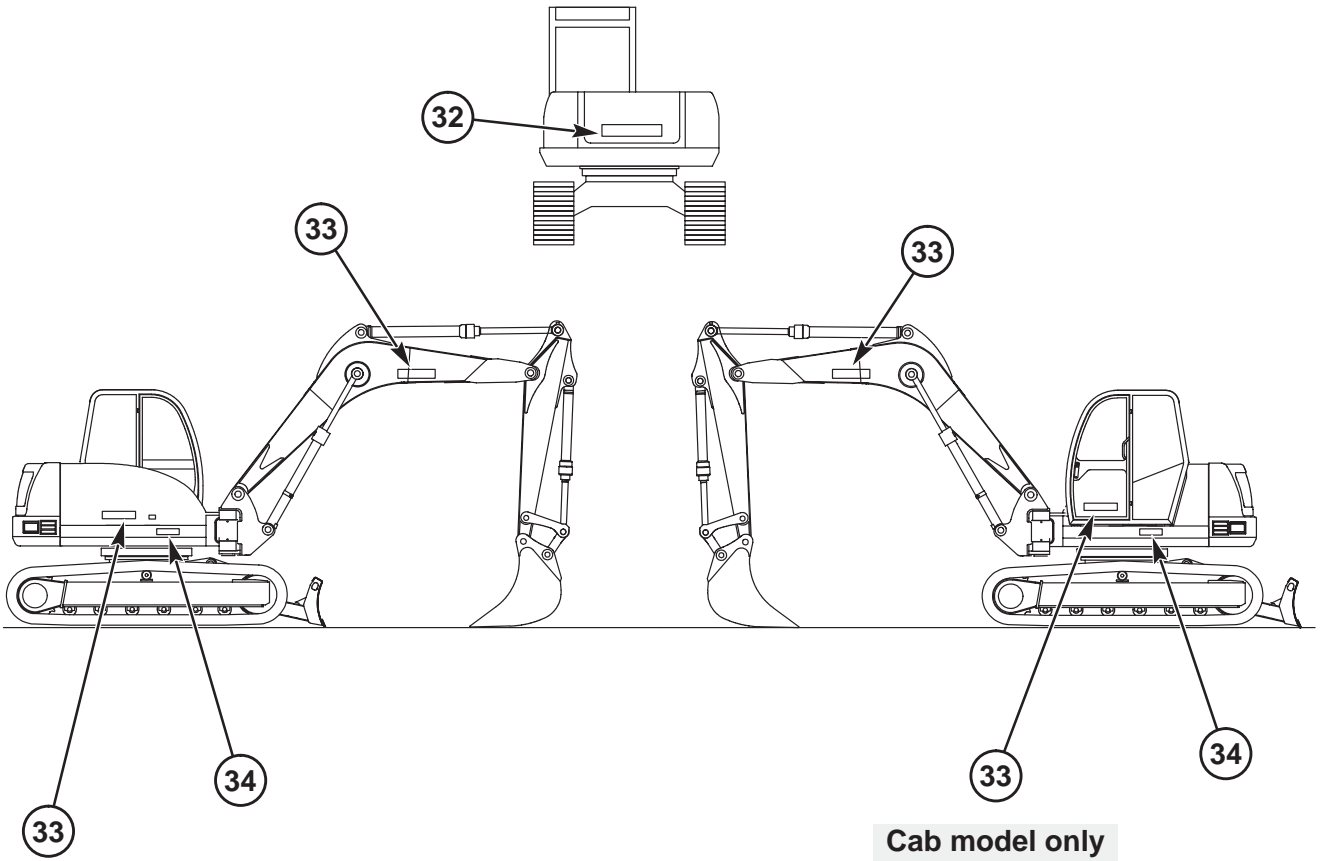
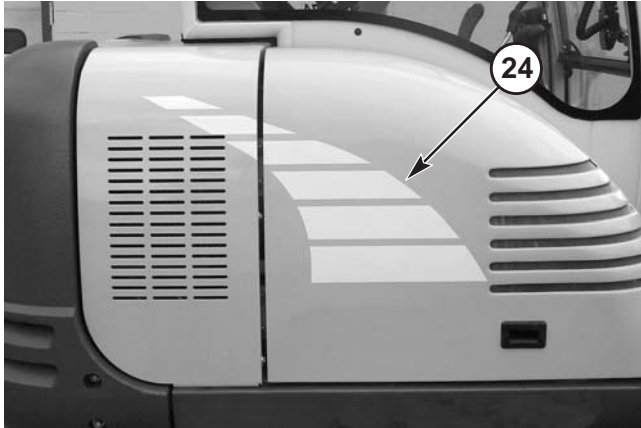
1.	2.	<p>⚠ WARNING</p> <p>TO AVOID INJURY:</p> <p>1. Load and transport unit properly. Inspect job-site for hazards. 2. Operate only from operator's seat. Fasten seatbelt. 3. Keep people out of DANGER ZONE. 4. Operate within stability limit of machine. DO NOT OVERLOAD. Use only approved attachments.</p>
3.	4.	

9705274C

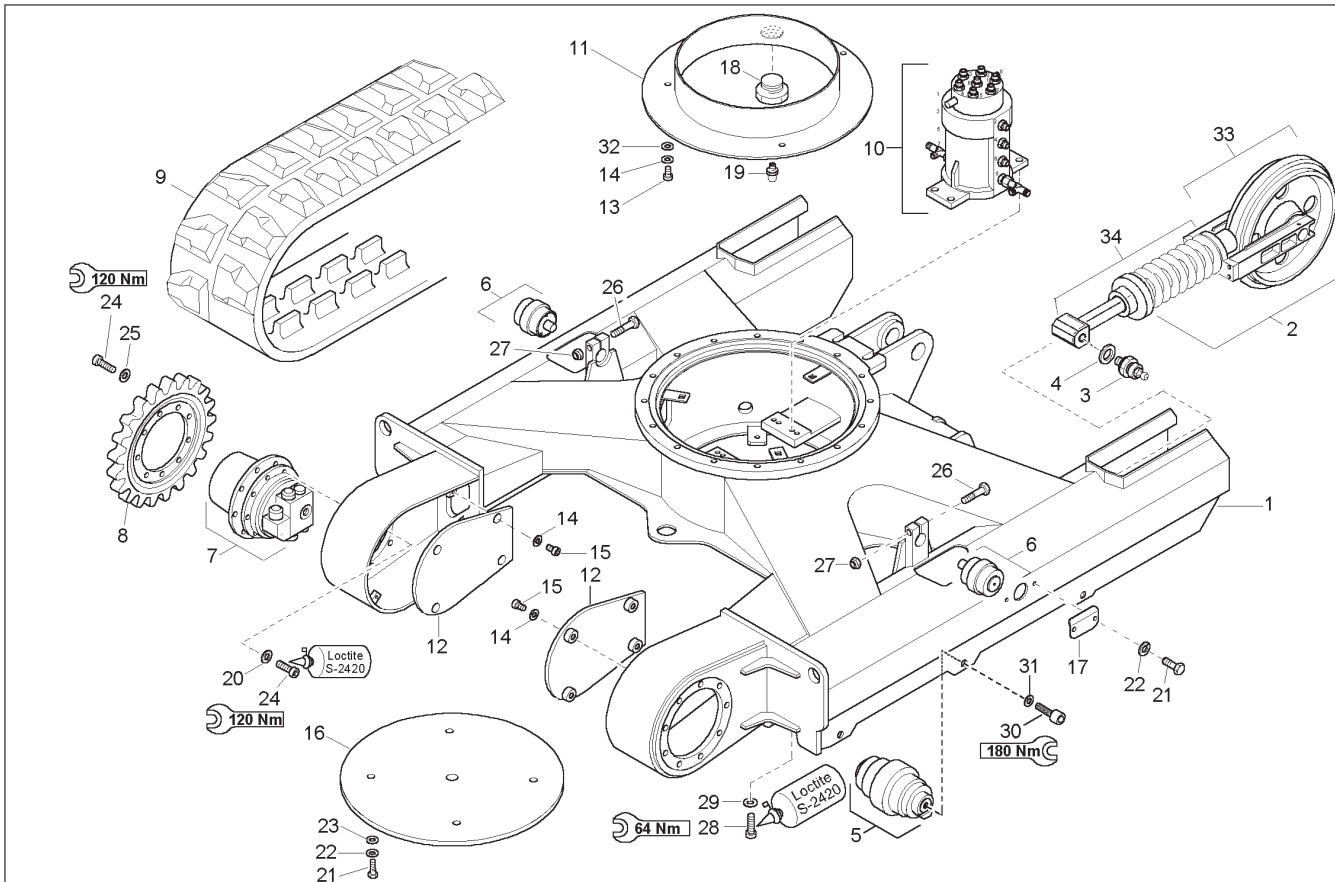
15	12	13	14	26

The decal listing has been repeated for your convenience.

Ref. No.	Part No.	Description & Quantity
	163984	Decal Kit - 253
1	161965	Diesel Fuel
2	161966	Hydraulic Oil
3	161967	Lubrication
4	161968	Heater Valve (cab models only)
5	161969	WARNING – Hydraulic Reservoir
6	161970	Arrow (2 places)
7	161981	Lift Point (4 places)
8	161982	Tiedown Point (4 places)
9	161985	WARNING – Keep Away (2 places)
10	161986	WARNING – Read Manual
11	161987	WARNING – Engine Fan
12	162450	Travel – Left
13	162451	Travel – Right
14	162452	Right Joystick Control
15	162453	Left Joystick Control
16	162832	Hydraulics Compartment Latch
17	163973	WARNING – Mandatory Shutdown
18	163975	WARNING – Avoid Injury (2 places)
19	163976	WARNING – Avoid Injury
20	163977	WARNING – Entanglement Hazard
21	163978	WARNING – Hot Surface
22	163979	Valve Position
23	163992	Left Graphic
24	163993	Right Graphic
25	163994	WARNING – Counterweight (2 places)
26	163995	Dozer Blade Control
27	163996	Bypass Ball Valve
28	164853	Engine Compartment Latch
29	164854	WARNING – Avoid Injury
30	165898	Manual Throttle
31	165906	Glow plug
32	159519	GEHL
33	L82282	GEHL (4 places, 3 places on canopy models)
34	164987	253 (2 places)



253 - UNDERCARRIAGE



Ref. No.	Part No.	Description	Qty. Req.	Ref. No.	Part No.	Description	Qty. Req.
01	165116	UNDERCARRIAGE	1	18	165119	PLUG	1
02	165123	TRACK TENSIONING COMPLETE	2	19	161412	LUBRICATION NIPPLE	1
03	160638	NON RETURN VALVE	2	20	161620	LW SPRING 12	18
04	160865	SCREW SEAL	2	21	656090	CS M10-1.5 X 16 C 8.8	8
05	165122	ROLLER COMPLETE	6	22	161669	RING/SNAP S10	8
06	165124	ROLLER COMPLETE	2	23	161640	WASHER/GR A 10.5	4
07	165485	TRACK DRIVE UNIT	2	24	651480	SHCS HS M12-1.7 X 30 10.9	36
08	165121	SPROCKET	2	25	161636	WASHER/NORD-LOCK NL 12 STUCK	18
09	165120	RUBBER CHAIN	2	26	165931	SCREW	2
10	161865	SWIVEL JOINT	1	27	651449	HLN INS M12-1.7	2
11	165602	BRACKET	1	28	162022	SCREW	4
12	165117	COVER	2	29	161635	WASHER/NORD-LOCK NL 10 STUCK	4
13	656001	CS M8-1.2 X 20 C 8.8	3	30	165945	SCREW	12
14	161676	RING/SNAP S8	11	31	164920	WASHER	12
15	651515	SHCS HS M8-1.2 X 20 8.8	8	32	161662	WASHER/GR A 8.4	3
16	165598	COVER	1	33	165126	TENSION WHEEL + SLIDE PART	2
17	162331	COVER	2	34	165127	SPRINGSET	2

Thanks for your reading.

Please click here to download complete manual instantly.

And can also choose other manuals.

Feel free --->write to me with any questions.

Our service email:

manuals007@hotmail.com