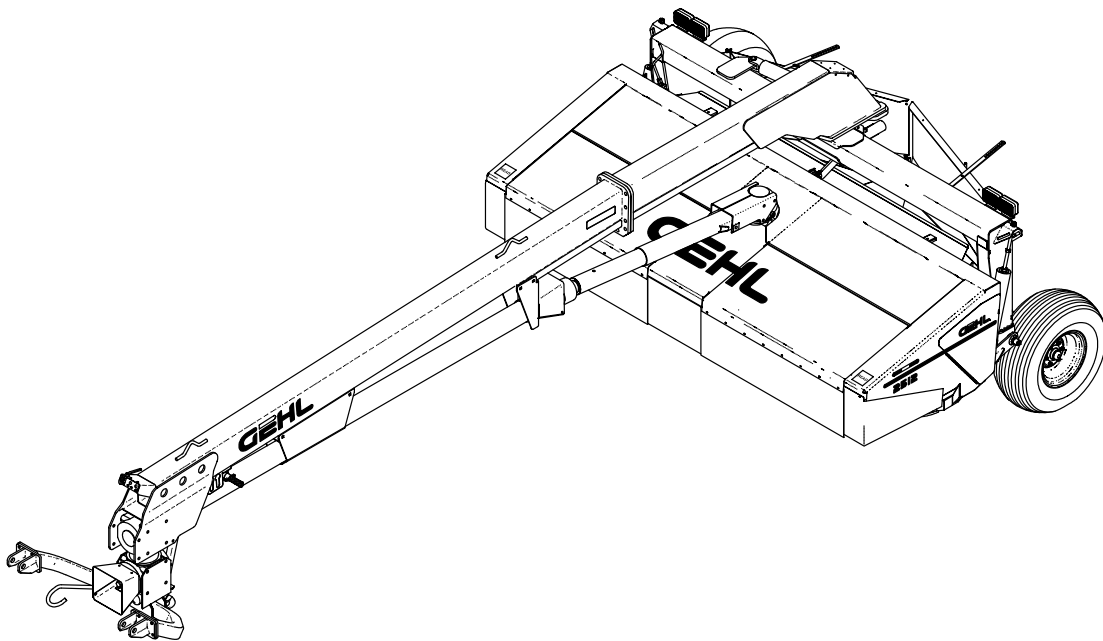


2512

Impeller Disc Mower Conditioner



PARTS MANUAL

GEHL® AGRICULTURE

Introduction

When ordering service parts, specify the correct part number, full description, quantity required, the unit model number and serial number.

The Impeller Disc Mower Conditioner model and serial number is on a plate located on the left side of the Main Frame near the Drawbar anchor point. “Right” and “Left” are determined from a position standing behind the Impeller Disc Mower Conditioner. From this position the Drawbar is on the left.

GEHL® Company reserves the right to make changes or improvements in the design or construction of any part of the unit without incurring the obligation to install such changes on any previously delivered units.

NOTE: *On original tire replacement, company policy prohibits the sale of replacement tires for all GEHL machinery. Replacement Wheel Sets are available and tire size information is called out with the Wheel Sets to facilitate replacement tire selection. ALL REPLACEMENT TIRES MUST BE PURCHASED LOCALLY.*

Refer to the abbreviations table located on this page for the various fastener descriptions. Standard attaching hardware torque values are also provided on the inside back cover.

In the exploded view parts list, Reference Numbers may have additional information following the Reference Number.

A Tear Drop symbol will indicate an application of a “wet” product such as oil, and the number inside the Tear Drop will correspond to the description in the Parts List.

Also, a number inside a hexagon will be the torque value required, in foot pounds, on the associated Reference Number. Items shown in the parts list that do not have Reference Numbers are shown for reference purposes only and are NOT available for purchase.

Unless otherwise specified, all Cap Screws or Bolts are Grade 5, zinc plated; Hexagon Nuts for Grade 5 Screws or Bolts are Grade B; Hexagon Nuts for other Screws or Bolts are Grade A.

NOTE: *The following abbreviations may be used herein:*



AR	- As Required
ASSD	- Assembled
ASSY	- Assembly
CB	- Carriage Bolt
CCW	- Counterclockwise
CP	- Cotter Pin
CS	- Cap Screw (Hexagon Head)
CTR	- Center
CW	- Clockwise
DEG	- Degree
DIA	- Diameter
FCS	- Flanged Cap Screw
FHCS	- Flat Head Cap Screw
FHMS	- Flat Head Machine Screw
FLN	- Flanged Lock Nut (Hexagon)
FLS	- Flanged Lock Screw (Hexagon)
FW	- Flat Washer
GA	- Gauge
GR	- Grade
HD	- Hard or Head
HN	- Hex Nut
INCL	- Includes
JT	- Joint
LG	- Large
LN	- Lock Nut
LT	- Left
LW	- Lock Washer
M	- Metric
MM/mm	- Millimeter
NF	- National Fine
NS	- Non Serviceable
PB	- Plow Bolt
PTO	- Power Take Off
RHMS	- Round Head Machine Screw
RPM	- Revolutions Per Minute
RT	- Right
SERR	- Serrated
SHCS	- Socket Head Cap Screw
SHSS	- Socket Head Set Screw
SN	- Serial Number or Slotted Nut
SQ	- Square
T	- Tooth or Teeth
TFS	- Thread Forming Screw
THMS	- Truss Head Machine Screw
THRD	- Thread
#	- Number
	- Torque Required in foot pounds
	- Indicates a Fluid Application

TABLE OF CONTENTS

Introduction	Inside Front Cover
Table of Contents	1
Decal Locations	2-11
Rear Tongue Assembly	12-13
Tongue Assembly (2-Point Hitch)	14-15
Tongue Assembly (Drawbar Hitch)	16-17
Cutterbar	18-19
Cutterbar, Discs & Skid Shoes	20-21
Gearbox Mounting	22-23
Impeller Drive	24-27
Trailer to Header Assembly	28
Trailer Assembly	29
Forming Chamber	30
Shields & Covers	31
Curtains	32
Hubs & Wheels	33
Hydraulics	34-35
Electrical	36-37
Deflector & Hood	38-39
Component Breakdowns	40-50
Universal Drives	40-43
Gearboxes	44-49
Hitchjack	50
Options & Accessories	51-52
Safety Chain, Wide Tire Bumper Kit	51
Sway Chain Kit, Truck Hitch Kit	52
Service Kits - Electrical Connectors	53
Alphabetical Index	54
Numerical Index	55-59
Hydraulic Fitting Data	60
Standard Hardware Torque specifications	Inside Back Cover

DECAL LOCATIONS

GENERAL INFORMATION

Decal locations information is provided to assist in the proper selection and application of new decals, in the event the original decals become damaged or the machine is repainted. Refer to the listing for the illustration reference number, part number, description and quantity of each decal provided in the kit. Refer to the appropriate illustrations for replacement locations.

NOTE: Refer to the *SAFETY* chapter of the *Operator's Manual* for the specific information provided on all of the various safety decals furnished in the decal kits.

To ensure proper selection for correct replacement decals, compare all of the various close-up location illustrations to your machine **BEFORE** starting to refinish the unit. Then circle each pictured decal, applicable to your machine, while checking off its part number in the listing. After you have verified all the decals needed for replacement, set aside any unneeded decals for disposal.

NEW DECAL APPLICATION

Surfaces **MUST** be free from dirt, dust, grease and other foreign material before applying the new decal. To apply a solid-formed decal, remove the smaller portion of the decal backing paper and apply this part of the exposed adhesive backing to the clean surface while maintaining proper position and alignment. Slowly peel off the other portion of the backing paper while applying hand pressure to smooth out the decal surface.



CAUTION

ALWAYS observe safety precautions listed on decals. If decals become damaged, or if the unit is repainted, replace the decals. If repainting, **BE SURE** that **ALL** decals from the kits that apply to your machine are affixed to your unit.

PAINT NOTICE

Use this list to order paint for refinishing:

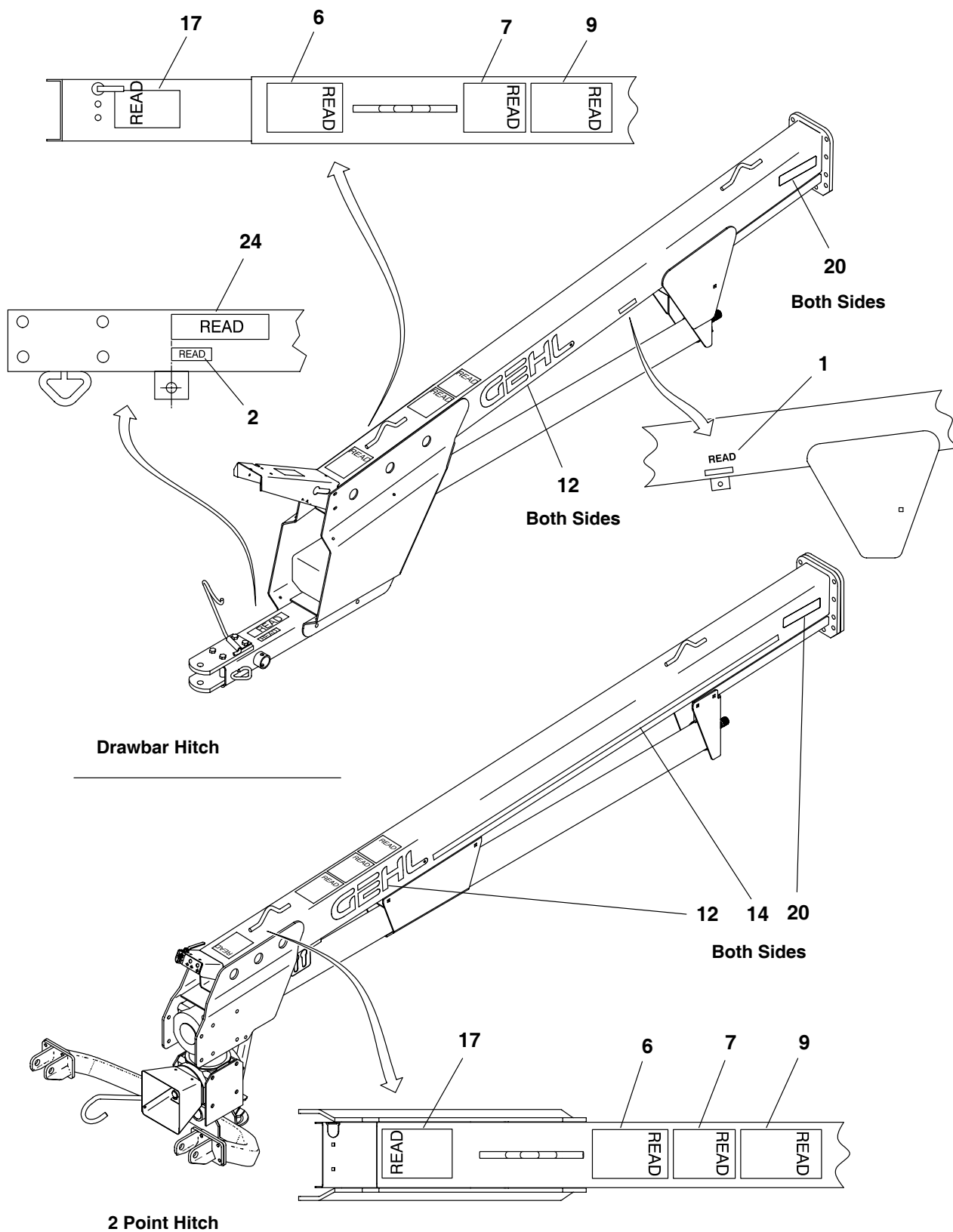
906315	One Gal. AG Red
906324	One Qt. Light Grey
906316	6 (12 oz. Spray Cans) AG Red
906325	6 (12 oz. Spray Cans) Light Grey

The decal kit number for the 2512 is 156959. The kit includes the following:

Ref. No.	Part No.	Description & Quantity
1.	060510+	Jack Storage Position
2.	060511+	Jack Lifting Position
3.	091444	DANGER - Rotating Drive Line (2 Places)
4.	093365	WARNING - Rotating Components (2 Places)
5.	093366	Store Manual Here
6.	093367	WARNING - Owner's Responsibility & Read Manual
7.	093373	WARNING - General Safety
8.	093465	WARNING - 1000 RPM Operation ONLY
9.	093653	WARNING - Rotating Drive Line
10.	094913	GEHL 3-1/4" (2 Places)
11.	094951	Made In USA
12.	122736	GEHL (2 Places)
13.	125476	DANGER - Rotating Knives (2 Places)
14.	126757	Striping (10 feet)
15.	126456	GE
16.	126457	HL
17.	142931	WARNING - Tongue Lock
18.	143007*	DANGER - Shield Missing
19.	145216	Red Reflector Strip (2 Places)
20.	145217	Amber Reflector Strip (4 Places)
21.	145218	Orange Reflector Strip (2 Places)
22.	145235	SMV - Mounted
23.	145237	SMV Mounting Spade
24.	158158+	Hitch Adjustment
25.	170336	2512 w/Colorbar (2 Places)
26.	170339	WARNING - Crush Hazard (2 Places)

+ Drawbar Hitch ONLY

* Not included in Decal Kit



Thanks for your reading.

Please click [here](#) to download complete manual instantly.

And can also choose other manuals.

Feel free --->write to me with any questions.

Our service email:

manuals007@hotmail.com