

GEHL®

Form No.
918036
Revision D
June 2009

Model 223

Compact Excavator

Serial Number Range

Engine Tier I Models: **AD00454 to AD04180**

Engine Tier II Models: **AE00001 and Up**



Parts Manual

INTRODUCTION

When ordering service parts, specify the correct part number, full description, quantity required, the unit model number and serial number. For your safety and continued proper operation, use only genuine Gehl service parts.

The model and serial number for this unit are on a tag located on a panel on the front of the cab.

“Right” and “left” are determined from a position sitting on the operator’s seat and facing forward.

Gehl Company reserves the right to make changes or improvements in the design or construction of any part of the unit without incurring the obligation to install such changes on any previously delivered units.

Refer to the abbreviations table located on this page for special parts descriptions. Standard attaching hardware torque values are also provided near the back of this manual. Metric torque values shown in the illustrations are in Newton-meters and are converted to foot-pounds by multiplying by 0.738.

Specific reference numbers, indicating a complete assembly, are circled in some illustrations. A small bag, pictured in some illustrations, indicates a seal kit (seals, o-rings, etc.). In the exploded view parts list, additional information may follow the Reference Number.

Serial number breaks are indicated as follows:

- (SN 999 and before) - indicates serial numbers up to and including 999.
- (SN 1000 - 2000) - indicates serial numbers between 1000 and 2000.
- (SN 999 and up) - indicates serial numbers including 999 and after.

Serial number exceptions and inclusion are indicated as follows:

- (SN 999 and before except 997) - indicates serial numbers up to and including 999, EXCEPT 997.
- (SN 1000 - 2000 except 1996 including 997) - indicates serial numbers between 1000 and 2000, INCLUDING 997 EXCEPT 1996.

- (SN 2001 and up including 1996) - indicates serial numbers including 2001 and after, INCLUDING 1996.

Unless otherwise specified, all cap screws and bolts are Grade 8.8, cadmium or zinc plated.

NOTE: *The following abbreviations may be used herein:*

ASSD	Assembled
ASSY	Assembly
AR	As Required
CB	Carriage Bolt
CP	Cotter Pin
CS	Cap Screw (Hexagon Head)
CYL	Cylinder
DIA	Diameter
DIN	Deutsches Institut für Normung
FHCS	Flat Head Cap Screw
GR	Grade
HB	Hex Bolt
HLN	Hex Lock Nut
HN	Hex Nut
HP	High Pressure
HYD	Hydraulic
INS	Insert
LH	Left Hand
LN	Lock Nut
LT	Left
LW	Lock Washer
M	Meter or Meters
MM/mm	Millimeter
NPT	National Pipe Threaded
NSS	Not Sold Separately
OS	Oversize
RH	Right Hand
RT	Right
SHCS	Socket Head Cap Screw
SLTD	Slotted
SN	Serial Number or Slotted Nut
SQ	Square
US	Undersize
W/	With
W/O	Without
ZO	Zinc Oxide
ZY	Zinc Yellow

TABLE OF CONTENTS

Introduction.....	i	Travel Valve Installation	71
Table of Contents.....	1	Joystick Hydraulics Installation, Left	72
Decal Locations	4	Joystick Hydraulics Installation, Right	73
Tools / Service Kits.....	8	Dozer Blade Valve (Triple)	74
Filters, Gaskets and Seals	9	Dozer Blade Valve (Triple) - Disassembled	75
Seal Kit	10	Boom Cylinder Installation.....	76
Diesel Engine	10	Boom Cylinder.....	77
Engine Mounts	12	Dipper Arm Cylinder Installation	78
Cylinder Head, Valve Cover.....	14	Dipper Arm Cylinder	79
Cylinder Block	16	Dipper Arm Short	80
Seal, Crankshaft.....	18	Dipper Arm Long (Option).....	81
Oil Pan	20	Dipper Arm, Long Hose Installation (Option).....	82
Camshaft	22	Connecting Link	83
Crankshaft, Piston.....	24	Bucket Cylinder Installation	84
Lubrication.....	26	Bucket Cylinder	85
Cooling System.....	28	Boom Offset Cylinder Installation.....	86
Fuel Injection System	30	Boom Offset Cylinder.....	87
Fuel Injection Pump.....	32	Dozer Blade Cylinder Installation	88
Air Intake System	33	Dozer Blade Cylinder	89
Intake Manifold.....	35	Telescopic Cylinder Installation	90
Exhaust System.....	36	Telescopic Cylinder	91
Exhaust Manifold.....	38	Tilt Cylinder Installation.....	92
Diesel Tank.....	39	Tilt Cylinder.....	93
Fuel System.....	42	Auxiliary Hydraulics.....	94
Throttle Lever	44	Auxiliary Function Installation.....	95
Hydraulic Pump	46	Battery.....	96
Hydraulic Pump Drive	47	Radio (Option).....	97
Radiator.....	50	Dashboard	98
Oil Cooler	52	Relay Box	100
Oil Cooler Installation	53	Horn	102
Turntable Drive Unit Installation.....	54	Work Light.....	103
Turntable Drive Unit.....	55	Cab Work Light (Option)	104
Travel Gear Installation	56	Cab Work Light, Rear (Option).....	105
Drive Motor	57	Rotating Group	106
Hydraulic Tank	58	Chassis Wire Harness	107
Control Valve.....	60	Engine Wire Harness	108
Control Valve Segments	61	Armrest Wire Harness	110
Swivel Joint.....	62	Auxiliary Hydraulics Electrical Harnesses.....	112
Joystick	63	4/3 Valve (Option).....	113
Pilot Valve, Travel	66	Undercarriage and Rubber Track.....	114
Reversing Valve.....	67	Track Tension, Rubber Track	115
Lock Valve.....	68	Dozer Blade	116
ISO/SAE Valve.....	69		
Hydraulic Pump Installation	70		

TABLE OF CONTENTS

Dozer Blade Extensions.....	117	Cab Frame.....	134
Chassis	118	Canopy Frame.....	135
Lubrication.....	119	Covers	136
Chassis Cover	120	Cab Windows.....	137
Side Panels.....	122	Front Window	138
Counterweight.....	124	Cab Doors	140
Hood.....	127	Mirrors (Option)	141
Seat Console	128	Operator's Seat	142
Seat Console Cover.....	129	Heater.....	148
Isolation Mats	130	Rotating Beacon (Option).....	150
Lifting Boom.....	132	Numerical Index	153
Cab Harnesses.....	133		

NOTES

DECAL LOCATIONS

GENERAL INFORMATION

Decal location information is provided to assist in the proper selection and application of new decals, in the event the original decals become damaged or the machine is repainted. The listing includes decal illustration reference number, part number, description and quantity information. Refer to the illustrations for appropriate replacement locations.

To ensure proper selection of the correct replacement decals, compare all of the various closeup location drawings to the machine before starting to refinish the unit. Then circle each decal shown (applicable to the machine) while checking off its part number in the listing. After verifying all the decals needed for replacement, place any extra unnecessary decals aside for disposal.

NOTE: Refer to the *SAFETY* chapter of the *Operator's Manual* for the specific information provided on all of the various safety decals furnished in the decal kit(s).

NEW DECAL APPLICATION

If there is a decal on a part that is to be replaced, be sure that the decal is applied to the replacement part. Surfaces **MUST** be free from dirt, dust, grease and other foreign material before applying the new decal. To apply, remove the smaller portion of the decal backing paper and apply this part of the exposed adhesive backing to the clean surface while maintaining proper position and alignment. Peel the other portion of the backing paper off slowly while applying hand pressure to smooth out the decal surface.



CAUTION

ALWAYS follow safety precautions on decals. Replace the decals if they are damaged, or if the unit is repainted. If repainting, **BE SURE** all applicable decals are affixed to the unit.

PAINT NOTICE

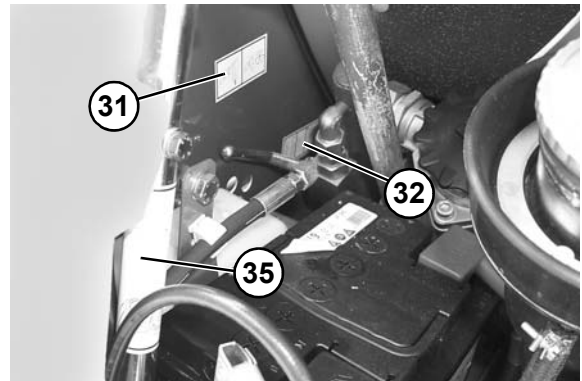
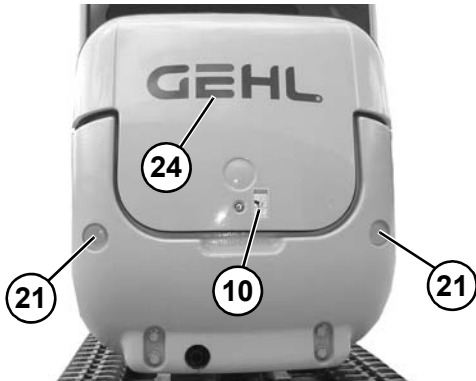
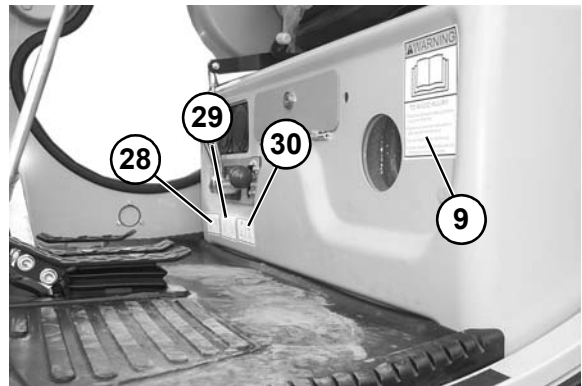
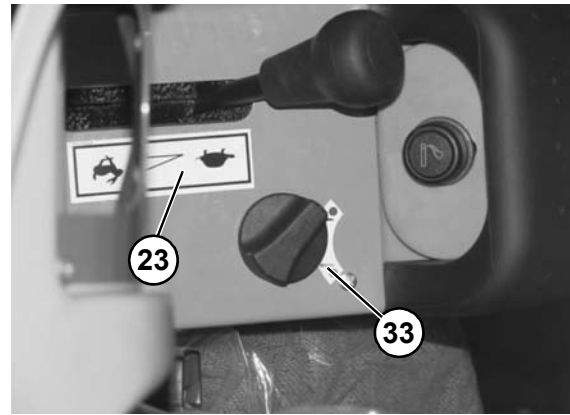
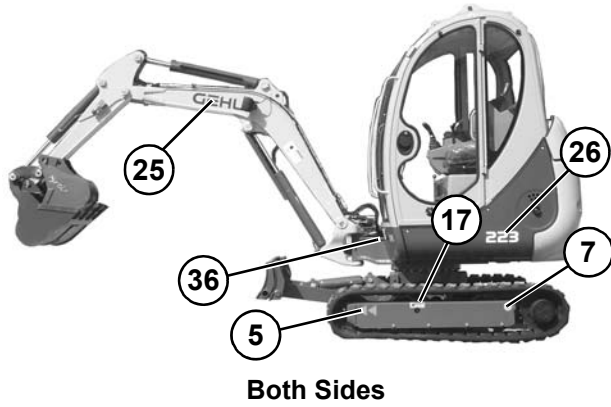
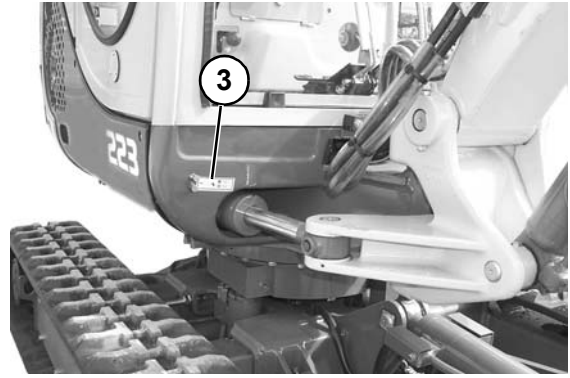
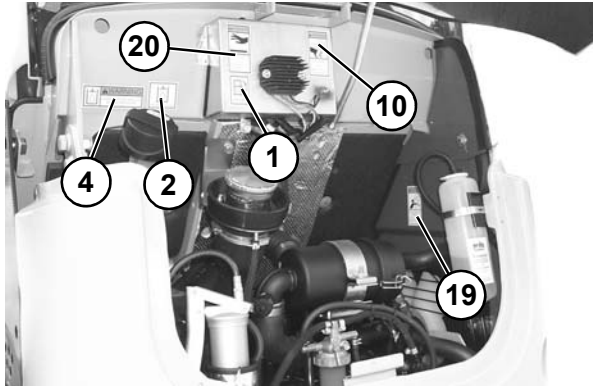
Use this list to order paint for refinishing:

167788	4 qts. Construction Yellow (GEHL)
167780	4 qts. Light Gray (GEHL)
167774	4 qts. Dark Gray (GEHL)
167789	6 (12.8 oz. Spray Cans) Yellow (GEHL)
167775	6 (12.8 oz. Spray Cans) Dark Gray (GEHL)
167781	6 (12.8 oz. Spray Cans) Light Gray (GEHL)

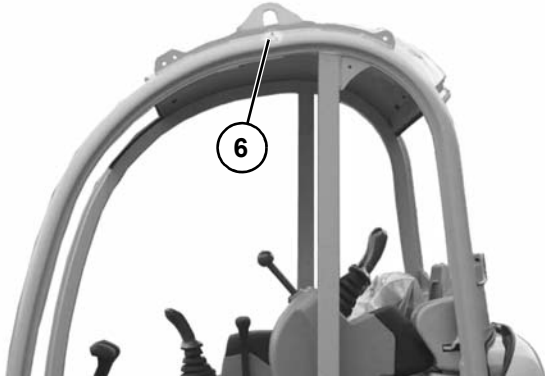
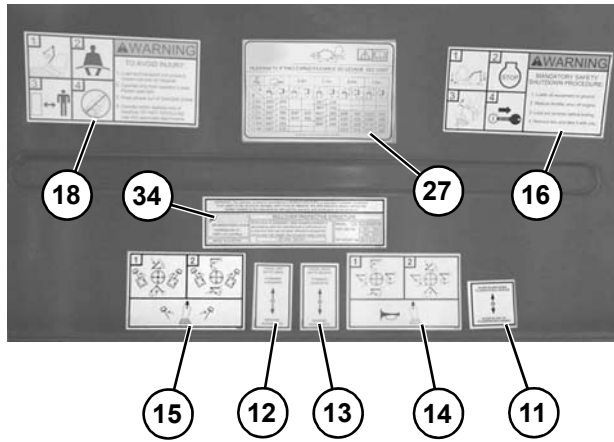
The decal kit for the model 223 Compact Excavator is listed below:

Ref. No.	Part No.	Description & Quantity
	165993	Kit/Decal GE223
1	161965	Decal/Diesel Fuel
2	161966	Decal/Hydraulic Oil
3	161967	Decal/Lubrication
4	161969	Decal/Warning Hyd Reservoir
5	161970	Decal/Arrow (2 places)
6	161981	Decal/Lift Point (4 places)
7	161982	Decal/Tiedown Point (4 places)
8	161985	Decal/Warning Keep Away (2 places)
9	161986	Decal/Warning Read Manual
10	161987	Decal/Warning Rotating Fan (2 places)
11	162449	Decal/Dozer Blade Up-Down
12	162450	Decal/Travel Left
13	162451	Decal/Travel Right
14	162452	Decal/Joystick Control Right
15	162453	Decal/Joystick Control Left
16	163973	Decal/Warning Mandatory Shutdown
17	163975	Decal/Warning Avoid Injury (2 places)
18	163976	Decal/Warning Avoid Injury
19	163977	Decal/Warning Entanglement Hazard
20	163978	Decal/Warning Hot Surface
21	206032	Decal/Reflector (2 places)
22	164854	Decal/Warning Avoid Injury (Cabin models only)
23	163974	Decal/Throttle Speed
24	183935	Decal/Gehl 5.50 x 23.34
25	183963	Decal/Gehl 3.75 x 15.92 (2 places)
26	170179	Decal/223 (2 places)
27	203794	Decal/Lifting Capacity
28	9705488G	Decal/Swing Lock
29	9705282G	Decal/Track Spread
30	162458	Decal/Cabin Tilt
31	9705489G	Decal/Return Flow Control
32	9705501G	Decal/ISO-SAE Valve
33	9705366G	Decal/Heater (Cabin Models only)
34	9705502G	Decal/ROPS-FOPS
35	9705523G	Decal/Cabin Support
36	104833	Decal/ Gehl 2.00 x 8.49 (white)

DECAL LOCATIONS

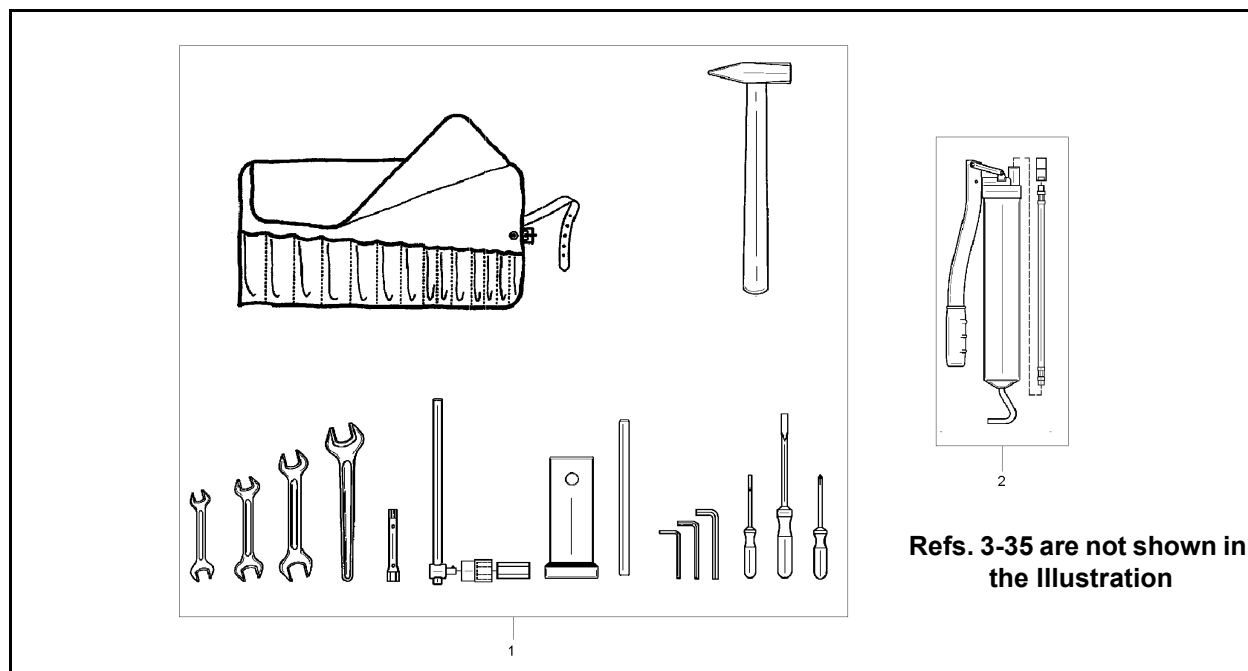


DECAL LOCATIONS



NOTES

223 - TOOLS / SERVICE KITS
1000135878



Ref. No.	Part No.	Description	Qty.
1	9706079G	TOOL KIT	1
2	161992	GREASE GUN	1
3	184467	HYDRAULIC GAUGE KIT	1
4	186011	TEST PORT, 4MP-M16X2, 1/4 NPT	1
5	183877	TEST PORT, 3/4-16 UNF	1
6	184472	TEST GAUGE, 1000PSI	1
7	184473	TEST GAUGE, 6000PSI	1
8	184475	TEST HOSE, 120" (Used with Gauge Kits)	1
9	184476	ADAPTER, 4FP-M16X2BLKHD (Used with Gauge Kits)	1
10	184474	TEST GAUGE, 10,000PSI	1
11	420-34912	ROD SEAL INSTALL TOOL, 3/4" X 1-1/4" DIAMETER SEALS	1
12	420-34913	ROD SEAL INSTALL TOOL, 1-1/2" X 2" DIAMETER SEALS	1
13	420-34914	ROD SEAL INSTALL TOOL, 2" X 3" DIAMETER SEALS	1
14	272814	OIL VACUUM PUMP (incl. in Engine Oil Analysis Kit)	1
15	272815	COOLANT VACUUM PUMP (incl. in Coolant Analysis Kit)	1
16	272816	1/4" PLASTIC TUBING, 100' (incl. in Analysis Kit)	1
17	195344	TRAIN KIT TOOL (Yanmar TNV)	1
18	195345	INJECTOR PULLER (Yanmar; Wrench-type)	1
19	195346	INJECTOR PULLER (Yanmar; Slide-hammer adapter)	1
20	195348	TIMING KIT TOOL (Yanmar TNV)	1

Ref. No.	Part No.	Description	Qty.
21	195387	DIAL INDICATOR (incl. in 195348 Timing Kit Tool)	1
22	195388	30MM EXT ROD (incl. in 195348 Timing Kit Tool)	1
23	195389	M14 ADAPTOR (incl. in 195348 Timing Kit Tool)	1
24	195390	M16 ADAPTOR (incl. in 195348 Timing Kit Tool)	1
25	195391	ADAPTOR NUT (incl. in 195348 Timing Kit Tool)	1
26	195392	CLAMP (incl. in 195348 Timing Kit Tool)	Set of 2
27	195393	COMPRESSION ADAPTOR TOOL (Yanmar; TNE78—TNE106, TNV82/84/88)	1
28	195394	COMPRESSOR ADAPTOR TOOL (Yanmar; 4TNV94/91/106)	1
29	195395	1/4NPT ADAPTOR TOOL (Yanmar)	1
30	241766	DIAGNOSTIC TOOL (Yanmar TNV Tier III)	1
31	272813	FIELD TEST COOLANT STRIP (1 Kit from Coolant Analysis Kit)	1
32	272806	HYDRAULIC OIL ANALYSIS KIT (GEHL)	Set of 10
33	272809	ENGINE OIL ANALYSIS KIT (GEHL)	Set of 10
34	272811	FUEL ANALYSIS KIT (GEHL)	1
35	272812	COOLANT ANALYSIS KIT (GEHL)	Set of 10

***Analysis Kits - Contact your dealer.**

Thanks for your reading.

Please click here to download complete manual instantly.

And can also choose other manuals.

Feel free --->write to me with any questions.

Our service email:

manuals007@hotmail.com