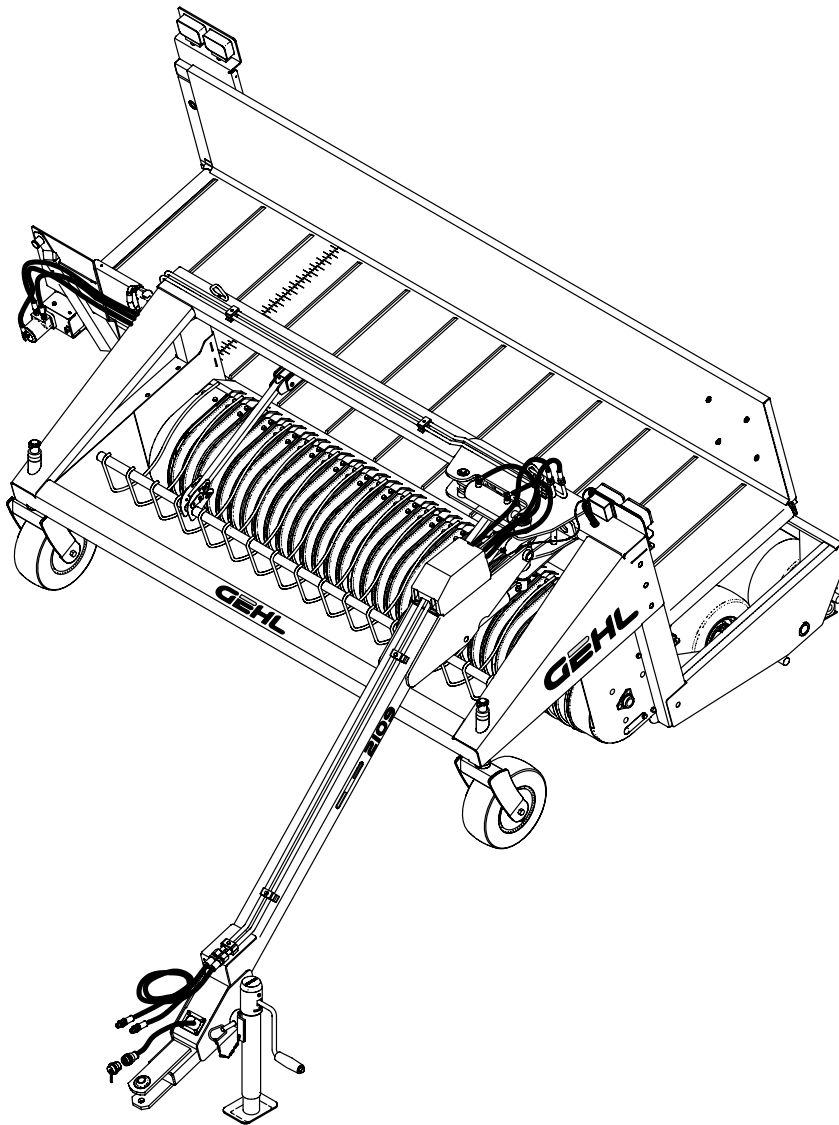


2109

Windrow Merger



PARTS MANUAL

GEHL® AGRICULTURE

Introduction

When ordering service parts, specify the correct part number, full description, quantity required, the unit model number and serial number.

The Windrow Merger model and serial numbers are located on the right side of the main frame behind the pickup drive guard. “Right” and “left” are determined from a position standing behind the Windrow Merger. From this position the drawbar is on the left.

GEHL Company reserves the right to make changes or improvements in the design or construction of any part of the unit without incurring the obligation to install such changes on any previously delivered units.

NOTE: *On original tire replacement, Company policy prohibits the sale of replacement tires for all GEHL machinery. Replacement wheel sets are available and tire size information is called out with the wheel sets to facilitate replacement tire selection. ALL REPLACEMENT TIRES MUST BE PURCHASED LOCALLY.*

Refer to the abbreviations table located on this page for the various fastener descriptions. Standard attaching hardware torque values are also provided on the inside back cover. Hydraulic fitting data is also provided on the last page.

In the exploded view parts lists, reference numbers may have additional information following the reference number. A tear drop symbol indicates an application of a “wet” product such as oil, and the number inside the tear drop will correspond to the description in the parts list. A number inside a hexagon will be the torque value required, in foot-pounds, on the associated reference number.

Items shown in the parts list that do not have reference numbers are shown for reference purposes only and are NOT available for purchase.

Unless otherwise specified, all cap screws and bolts are Grade 5, zinc plated; hexagon nuts for Grade 5 screws or bolts are Grade B; hexagon nuts for other screws and bolts are Grade A.

NOTE: *The following abbreviations may be used herein:*

| | |
|------|--------------------|
| ADAP | - Adapter |
| AR | - As Required |
| ASSD | - Assembled |
| ASSY | - Assembly |
| CB | - Carriage Bolt |
| CCW | - Counterclockwise |

| | |
|-------|--------------------------------|
| CP | - Cotter Pin |
| CS | - Cap Screw (Hexagon Head) |
| CTR | - Center |
| CW | - Clockwise |
| DEG | - Degree |
| DIA | - Diameter |
| FCS | - Flanged Cap Screw |
| EPSC | - Extended Prong Square Cut |
| FHCS | - Flat Head Cap Screw |
| FHMS | - Flat Head Machine Screw |
| FLN | - Flanged Lock Nut (Hexagon) |
| FLS | - Flanged Lock Screw (Hexagon) |
| FW | - Flat Washer |
| GA | - Gauge |
| GR | - Grade |
| HD | - Hard or Head |
| HHMB | - Hex Head Machine Bolt |
| HHMS | - Hex Head Machine Screw |
| HJN | - Hex Jam Nut |
| HN | - Hex Nut |
| HTB | - Hex Tap Bolt |
| INCL | - Includes |
| JT | - Joint |
| LG | - Large |
| LN | - Lock Nut |
| LT | - Left |
| LW | - Lock Washer |
| M | - Metric |
| MM/mm | - Millimeter |
| NF | - National Fine |
| NILN | - Nylon Insert Lock Nut |
| PB | - Plow Bolt |
| PTO | - Power Take Off |
| RHMS | - Round Head Machine Screw |
| RPM | - Revolutions Per Minute |
| RT | - Right |
| SERR | - Serrated |
| SHCS | - Socket Head Cap Screw |
| SHSS | - Socket Head Set Screw |
| SLTD | - Slotted |
| SN | - Serial Number or Slotted Nut |
| SQ | - Square |
| T | - Tooth or Teeth |
| TCS | - Thread Cutting Screw |
| TFS | - Thread Forming Screw |
| THMS | - Truss Head Machine Screw |
| THRD | - Thread |
| # | - Number |



- Torque required in foot-pounds

- Indicates a fluid application

TABLE OF CONTENTS

| | |
|---|--------------------|
| Introduction | Inside Front Cover |
| Table of Contents | 1 |
| Decal Locations | 2-5 |
| Tongue Assembly | 6 |
| Hitchjack | 7 |
| Pickup | 8-13 |
| Windguard & Casters | 14-15 |
| Conveyor & Platform | 16-21 |
| Hydraulics | 22-29 |
| Electrical | 30-33 |
| Control Box | 34 |
| Axles & Wheels | 35-36 |
| Options & Accessories | 37-54 |
| Vari-speed Pickup | 37-38 |
| Conveyor Shut-off Valve | 39 |
| 3' Conveyor Extension | 40-47 |
| Power Assist Conveyor Bed Shift | 48-49 |
| Accessory Harness | 50 |
| Swing Cylinder Lock Kit | 51 |
| Conveyor Reversing Valve | 52 |
| Hose Kit | 53 |
| Safety Tow Chain | 54 |
| Alphabetical Index | 55 |
| Numerical Index | 56-59 |
| Hydraulic Fitting Data | 60 |
| Standard Hardware Torque Specifications | Inside Back Cover |

DECAL LOCATIONS

GENERAL INFORMATION

Decal locations information is provided to assist in the proper selection and application of new decals, in the event the original decals become damaged or the machine is repainted. Refer to the listing for the illustration reference number, part number, description and quantity of each decal provided in the kit. Refer to the appropriate illustrations for replacement locations.

NOTE: Refer to the *SAFETY* chapter of the *Operator's Manual* for the specific information provided on all of the various safety decals furnished in the decal kits.

To ensure proper selection for correct replacement decals, compare the various close-up location illustrations to the machine **BEFORE** starting to refinish the unit. Then circle each pictured decal, applicable to the machine, while checking off its part number in the listing. After you have verified all the decals needed for replacement, set aside any unneeded decals for disposal.

NEW DECAL APPLICATION

Surfaces **MUST** be free from dirt, dust, grease and other foreign material before applying the new decal. To apply a solid-formed decal, remove the smaller portion of the decal backing paper and apply this part of the exposed adhesive backing to the clean surface while maintaining proper position and alignment. Slowly peel off the other portion of the backing paper while applying hand pressure to smooth out the decal surface.



CAUTION

ALWAYS observe safety precautions listed on decals. If decals become damaged, or if the unit is repainted, replace the decals. If repainting, **BE SURE** that **ALL** decals from the kits that apply to your machine are affixed to your unit.

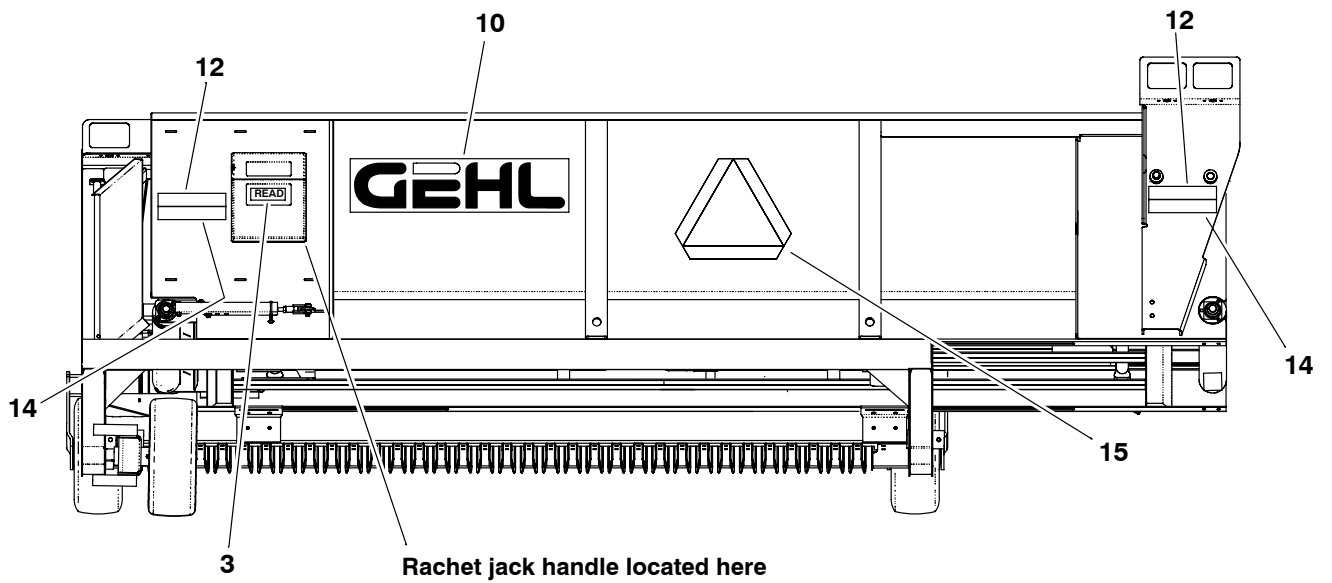
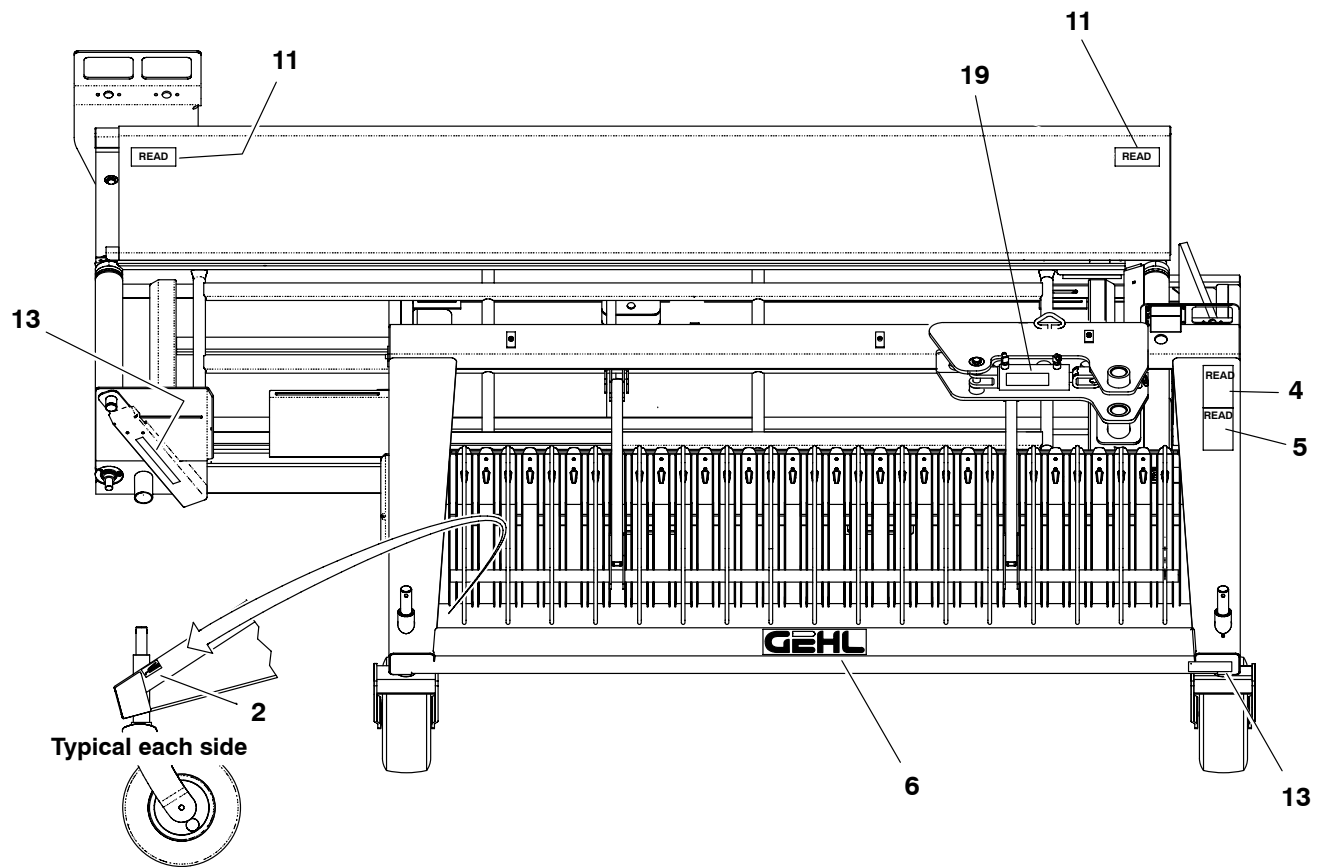
PAINT NOTICE

Use this list to order paint for refinishing:

| | |
|--------|---|
| 167792 | 4 qts. Ag Red (GEHL) |
| 167798 | 4 qts. Light Gray (GEHL) |
| 167793 | 6 (12.8 oz. Spray Cans) Ag Red (GEHL) |
| 167796 | 6 (12.8 oz. Spray Cans) Light Gray (GEHL) |

The decal kit number for the 2109 is 171613. The kit includes the following:

| Ref. No. | Part No. | Description & Quantity |
|----------|----------|--|
| 1 | 060510 | Jack Storage Position |
| 2 | 093020 | Lubrication Symbol (2 Places) |
| 3 | 093366 | IMPORTANT - Store Manual Here |
| 4 | 093367 | WARNING - Owner's Responsibility & Read Manual |
| 5 | 093373 | WARNING - General Safety |
| 6 | 094913 | GEHL |
| 7 | 094914 | GEHL (2 Places) |
| 8 | 094951 | Made In U.S.A. |
| 9 | 112390 | Colorbar (2 Places) |
| 10 | 122433 | GEHL |
| 11 | 124982 | WARNING - Pinch Point (2 Places) |
| 12 | 145216 | Red Reflector (2 Places) |
| 13 | 145217 | Amber Reflector (2 Places) |
| 14 | 145218 | Orange Reflector Strip (2 Places) |
| 15 | 145234 | SMV Marker |
| 16 | 163957 | WARNING - Keep Hands Out |
| 17 | 163969 | WARNING - Hydraulic Oil & Unplugging |
| 18 | 171516 | 2109 (2 Places) |
| 19 | 142931 | WARNING - Tongue Lock |
| 20 | 170339 | WARNING - Crush Hazard |



Thanks for your reading.

Please click [here](#) to download complete manual instantly.

And can also choose other manuals.

Feel free ---> write to me with any questions.

Our service email:

manuals007@hotmail.com