

Form No.
909827

193 & 223 Compact Excavators

PARTS MANUAL

GEHL[®]

Introduction

When ordering service parts, specify the correct part number, full description, quantity required, the unit model number and serial number. For your safety and continued proper operation, use only genuine GEHL service parts.

The model and serial number for this unit are on a tag located on a panel on the front of the cabin.

“Right” and “left” are determined from a position sitting on the seat and facing forward.

GEHL® Company reserves the right to make changes or improvements in the design or construction of any part of the unit without incurring the obligation to install such changes on any previously delivered units.

Refer to the abbreviations table located on this page for the various fastener descriptions. Standard attaching hardware torque values are also provided on the inside back cover. Metric torque values shown in the illustra-

tions are in Newton-meters and can be converted to Foot-pounds by multiplying by 0.738.

In the exploded view parts list, Reference Numbers may have additional information following the Reference Number.

Unless otherwise specified, all Cap Screws or Bolts are Grade 5, cadmium or zinc plated; Hexagon Nuts for Grade 5 Screws or Bolts are Grade B; Hexagon Nuts for other Screws or Bolts are Grade A.

NOTE: *The following abbreviations may be used herein:*

CP	– Cotter Pin
CS	– Cap Screw (Hexagon Head)
FHCS	– Flat Head Cap Screw
HN	– Hex Nut
LN	– Lock Nut
LT	– Left Hand
M	– Metric
MM/mm	– Millimeter
RT	– Right

TABLE OF CONTENTS

Introduction	Inside Front Cover	Control Valve	53
Decal Locations	2–7	Control Valve Segments	54
Undercarriage, 193	8	Swivel Joint, 193	55
Undercarriage, 223	9	Swivel Joint, 223	56
Track Tensioner	10	Swivel Motor	57
Tension Wheel	11	Reversing Valve	58
Track Roller	12	ISO/SAE Valve	59
Dozer Blade, 193	13	Dozer Blade Valve (Double), 193	60
Dozer Blade Extensions, 193	14	Dozer Blade Valve Breakdown (Double), 193	61
Dozer Blade, 223	15	Dozer Blade Valve (Triple), 223	62
Dozer Blade Extensions, 223	16	Dozer Blade Valve Breakdown (Triple), 223	63
Chassis	17	Hydraulic Block	64
Chassis Covers	18	Joysticks	65
Lubrication	19	Traveling Valve	66
Counterweight	20	Auxiliary Hydraulics Pedal	67
Engine Cover	21	Boom Cylinder	68
Seat Console & Sidewall	22	Dipper Arm Cylinder	69
Isolation Mats	23	Bucket Cylinder	70
Lifting Boom	24	Boom Slew Cylinder	71
Dipper Arm, Short	25	Dozer Blade Cylinder, 193	72
Dipper Arm, Long	26	Dozer Blade Cylinder, 223	73
Connecting Link	27	Track Spreading Cylinder	74
Cabin Frame 1	28	Cabin Tilt Cylinder	75
(Before Cabin Serial Number 42289)		Hoses, Oil Cooler	76
Cabin Frame 1	29	Hoses, Hydraulic Pump, 193	77
(After Cabin Serial Number 42288)		Hoses, Hydraulic Pump, 223	78
Cabin Frame, Canopy	30	Hoses, Traveling Motor, 193	79
Cabin Covers	31	Hoses, Traveling Motor, 223	80
(Before Cabin Serial Number 42289)		Hoses, Swivel Motor	81
Cabin Covers	32	Hoses, Reversing Valve, 193	82
(After Cabin Serial Number 42288)		Hoses, Reversing Valve, 223	83
Cabin Wire Harness	33	Hoses, Dozer Blade Cylinder, 193	84
Front Window	34	Hoses, Dozer Blade Cylinder, 223	85
Cabin Windows	35	Hoses, Track Cylinder, 193	86
Cabin Doors	36	Hoses, Track Cylinder, 223	87
Cabin Heater	37	Hoses, Cabin Tilt Cylinder, 223	88
Operator's Seat	38	Hoses, Joysticks	89
Diesel Engine	39	Hoses, Traveling Valve	90
Engine Mounts	40	Hoses, Dipper Arm (Short)	91
Radiator	41	Hoses, Dipper Arm (Long)	92
(Before SN AC00822)		Battery	93
Radiator	42	Wire Harness, Right Armrest	94
(After SN AC00821)		Wire Harness, Left Armrest	95
Air Cleaner	43	Wire Harness, Engine	96
Exhaust	44	Wire Harness, Chassis	97
Fuel Supply	45	Relay Box	98
Manual Throttle	46	Headlight	99
Fuel Tank	47	Horn	100
Pump Drive	48	Wire Harness, Auxiliary Hydraulics	101
Hydraulic Oil Tank	49	Tool Kit	102
Hydraulic Pump	50	Alphabetical Index	103–104
Oil Cooler	51	Numerical Index	105–113
Travel Motors	52	Torque Chart	Inside Rear Cover

DECAL LOCATIONS

GENERAL INFORMATION

Decal location information is provided to assist in the proper selection and application of new decals, in the event the original decals become damaged or the machine is repainted. Refer to the listing for the illustration reference number, part number, description and quantity of each decal provided in the kit. Refer to the appropriate illustrations for replacement locations.

To ensure proper selection of the correct replacement decals, compare all of the various closeup location drawings to your machine before starting to refinish the unit. Then circle each shown decal (applicable to your machine) while checking off its part number in the listing. After you have verified all the decals needed for replacement, place any extra unnecessary decals aside for disposal.

NOTE: Refer to the SAFETY chapter of the Operator's Manual for the specific information provided on all of the various safety decals furnished in the decal kit(s).

NEW DECAL APPLICATION

Surfaces MUST be free from dirt, dust, grease and other foreign material before applying the new decal. To apply, remove the smaller portion of the decal backing paper and apply this part of the exposed adhesive backing to the clean surface while maintaining proper position and alignment. Peel the other portion of the backing paper off slowly while applying hand pressure to smooth out the decal surface.



CAUTION

ALWAYS follow safety precautions on decals. Replace the decals if they are damaged, or if the unit is repainted. If repainting, BE SURE all applicable decals are affixed to your unit.

PAINT NOTICE

Use this list to order paint for refinishing:

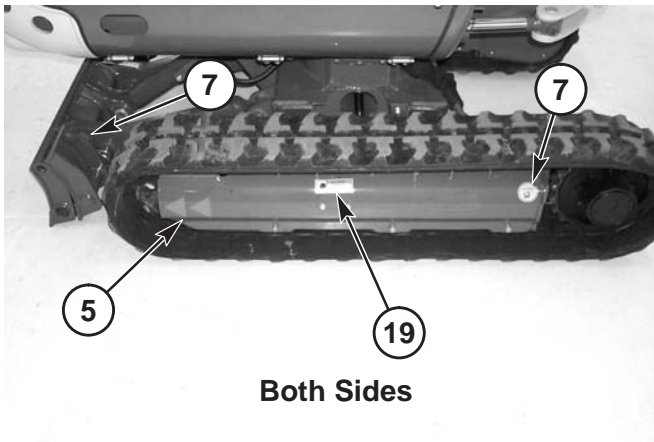
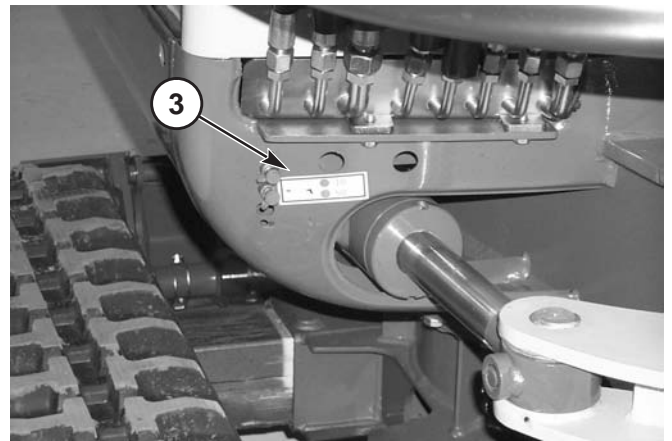
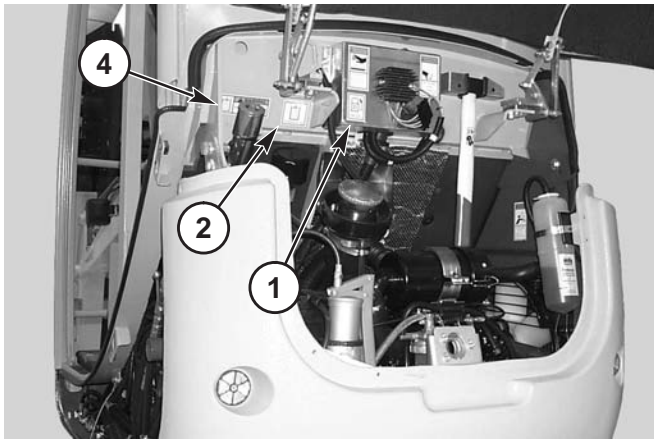
906213	One Gal. Construction Yellow
906323	One Qt. Charcoal Grey
906317	One Gal. Charcoal Grey
906214	6 (12 oz. Spray Cans) Yellow
906318	6 (12 oz. Spray Cans) Grey

Most of the decals are common to both units. Any differences are called out using asterisks. The decal kits for the model 193 and 223 Compact Excavators are listed below:

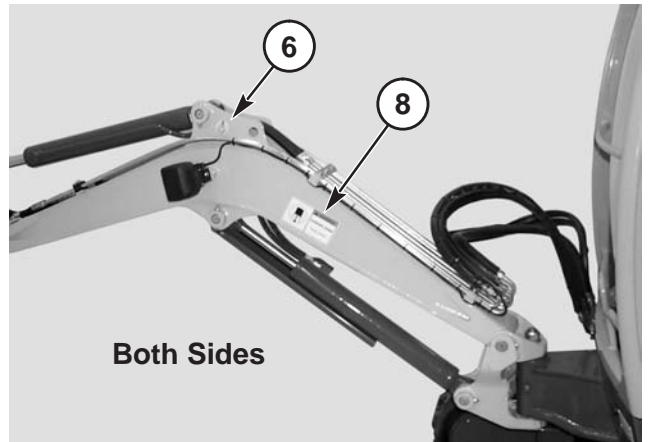
Ref. No.	Part No.	Description & Quantity
	165992	Decal Kit - 193
	165993	Decal Kit - 223
01	161965	Diesel Fuel
02	161966	Hydraulic Oil
03	161967	Lubrication
04	161969	WARNING – Hydraulic Reservoir
05	161970	Arrow (2 places)
06	161981	Lift Point (4 places)
07	161982	Tiedown Point (4 places)
08	161985	WARNING – Keep Away (2 places)
09	161986	WARNING – Read Manual
10	161987	WARNING – Engine Fan (2 places)
11	162449	Dozer Blade
12	162450	Travel – Left
13	162451	Travel – Right
14	162452	Right Joystick Control
15	162453	Left Joystick Control
16	162458 **	Cabin Tilt
17	163973	WARNING – Mandatory Shutdown
18	163974	Manual Throttle
19	163975	WARNING – Avoid Injury (2 places)
20	163976	WARNING – Avoid Injury
21	163977	WARNING – Entanglement Hazard
22	163978	WARNING – Hot Surface
23	164853	Engine Compartment Latch
24	164854	WARNING – Avoid Injury (cabin models only)
25	9705282G	Track Spread
26	9705366G	Heater (cabin models only)
27	9705488G	Swing Lock
28	9705489G	Return Flow Control
29	9705501G	ISO/SAE Valve
30	9705502G	ROPS/FOPS
31	9705523G	Cabin Support
32	159519	GEHL
33	L82282	GEHL (2 places)
34	170178 *	193 (2 places)
	170179 **	223 (2 places)

* Decals used on 193 only

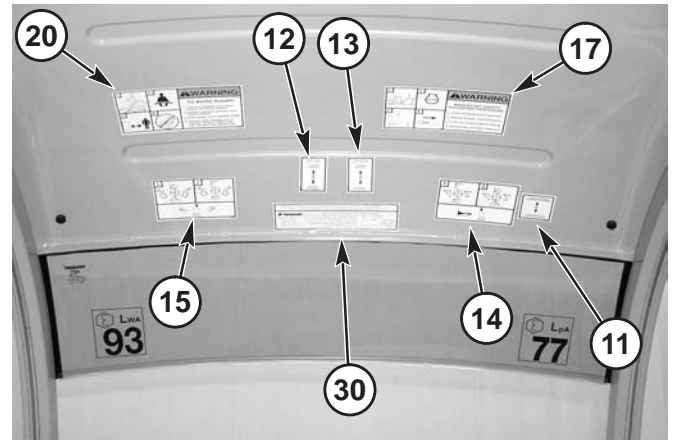
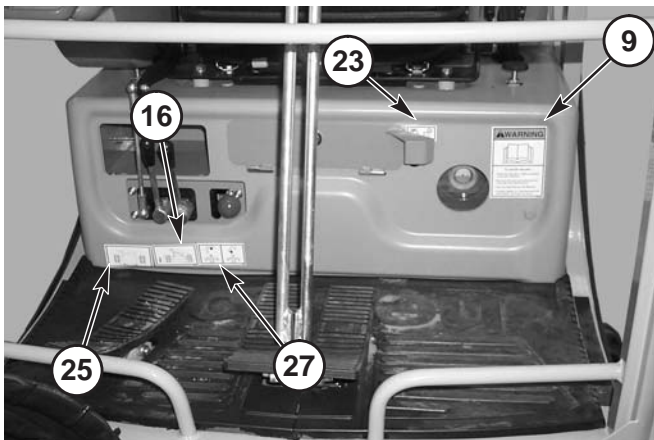
** Decals used on 223 only



Both Sides

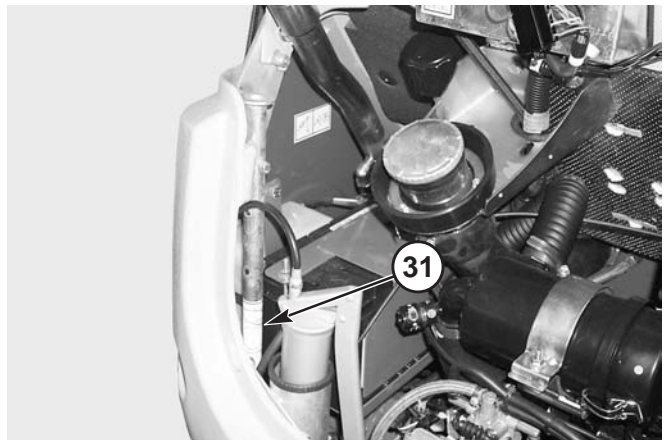
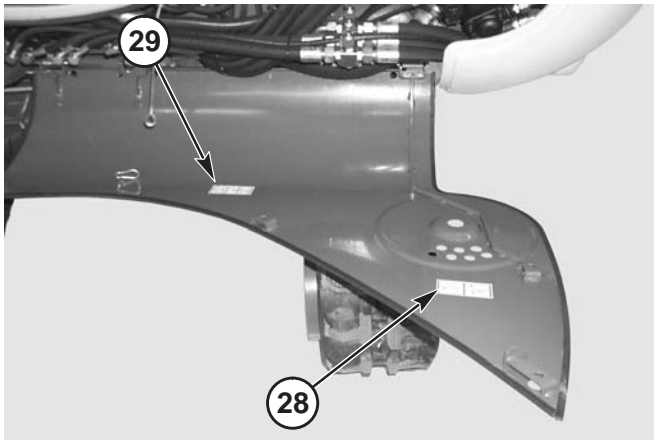
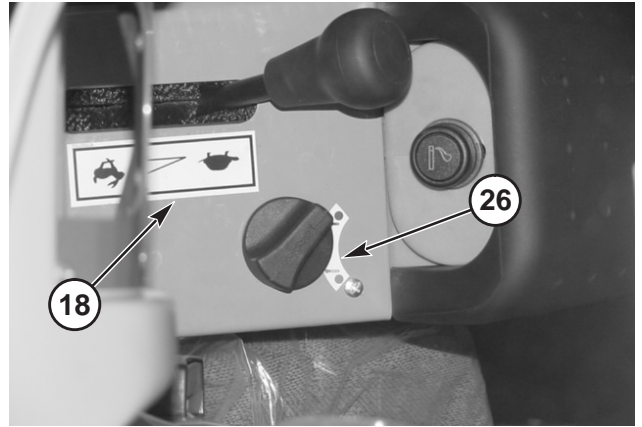
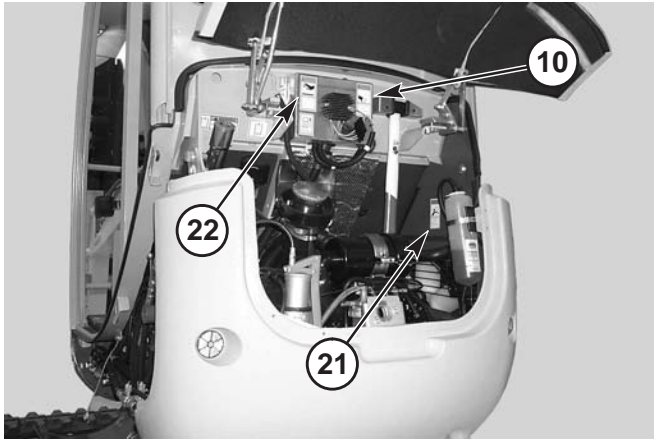
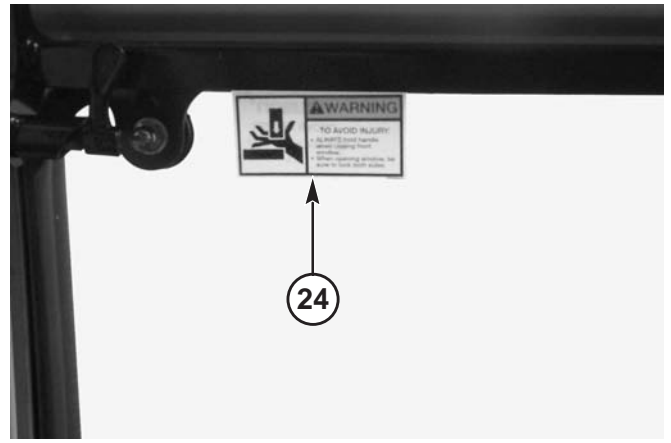
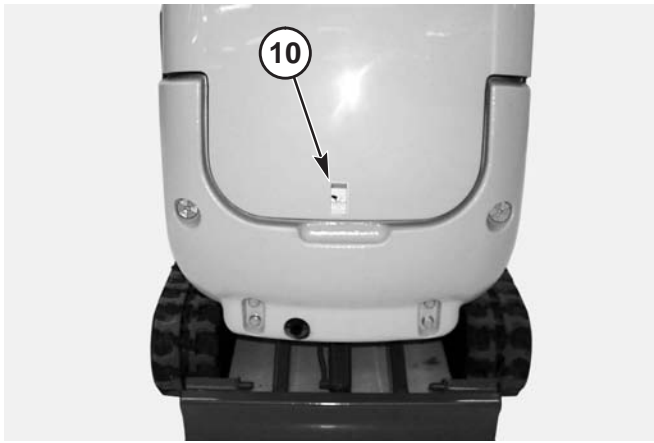


Both Sides



The decal listing has been repeated for your convenience.

Ref. No.	Part No.	Description & Quantity
	165992	Decal Kit - 193
	165993	Decal Kit - 223
01	161965	Diesel Fuel
02	161966	Hydraulic Oil
03	161967	Lubrication
04	161969	WARNING – Hydraulic Reservoir
05	161970	Arrow (2 places)
06	161981	Lift Point (4 places)
07	161982	Tiedown Point (4 places)
08	161985	WARNING – Keep Away (2 places)
09	161986	WARNING – Read Manual
10	161987	WARNING – Engine Fan (2 places)
11	162449	Dozer Blade
12	162450	Travel – Left
13	162451	Travel – Right
14	162452	Right Joystick Control
15	162453	Left Joystick Control
16	162458 **	Cabin Tilt
17	163973	WARNING – Mandatory Shutdown
18	163974	Manual Throttle
19	163975	WARNING – Avoid Injury (2 places)
20	163976	WARNING – Avoid Injury
21	163977	WARNING – Entanglement Hazard
22	163978	WARNING – Hot Surface
23	164853	Engine Compartment Latch
24	164854	WARNING – Avoid Injury (cabin models only)
25	9705282G	Track Spread
26	9705366G	Heater (cabin models only)
27	9705488G	Swing Lock
28	9705489G	Return Flow Control
29	9705501G	ISO/SAE Valve
30	9705502G	ROPS/FOPS
31	9705523G	Cabin Support
32	159519	GEHL
33	L82282	GEHL (2 places)
34	170178 *	193 (2 places)
	170179 **	223 (2 places)
	*	Decals used on 193 only
	**	Decals used on 223 only

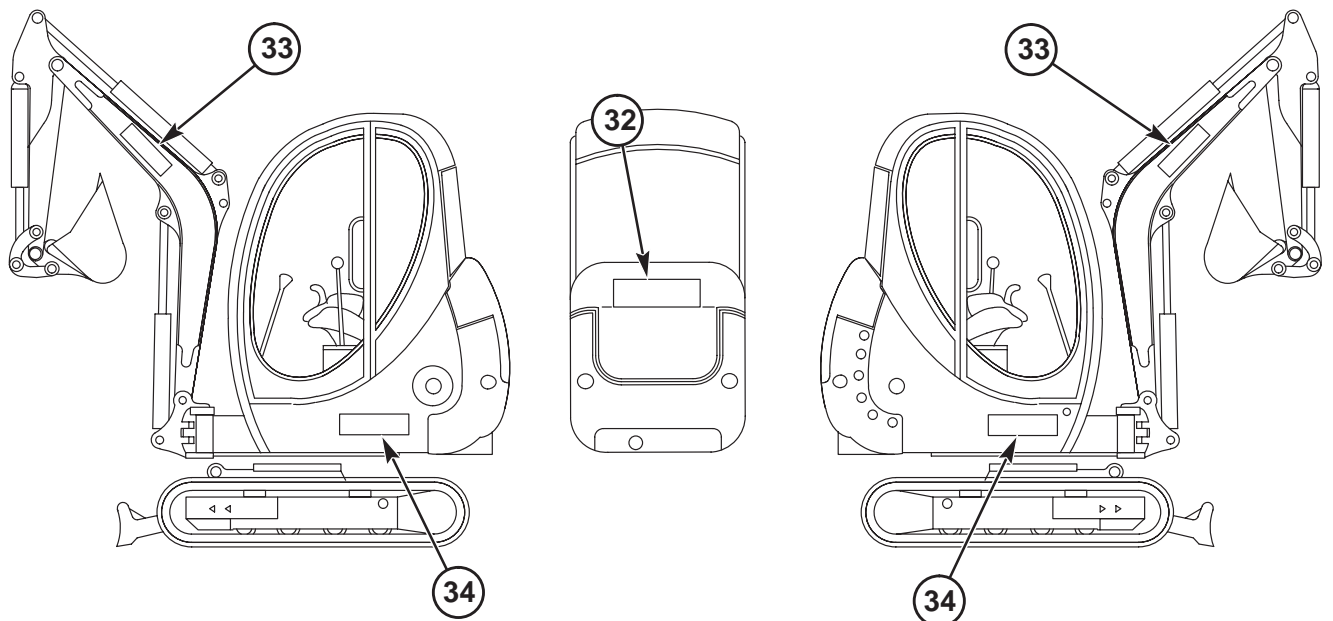


The decal listing has been repeated for your convenience.

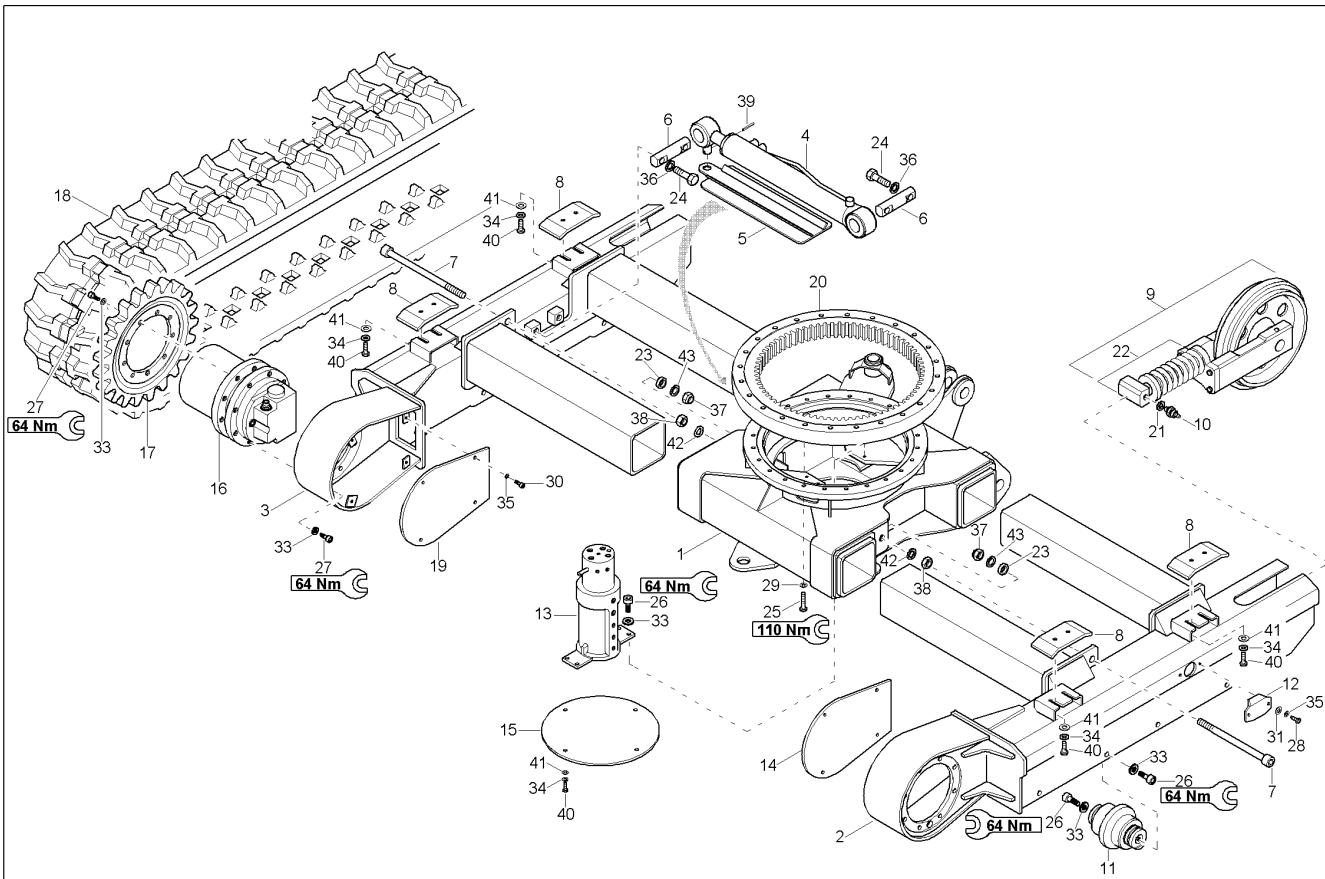
Ref. No.	Part No.	Description & Quantity
	165992	Decal Kit - 193
	165993	Decal Kit - 223
01	161965	Diesel Fuel
02	161966	Hydraulic Oil
03	161967	Lubrication
04	161969	WARNING – Hydraulic Reservoir
05	161970	Arrow (2 places)
06	161981	Lift Point (4 places)
07	161982	Tiedown Point (4 places)
08	161985	WARNING – Keep Away (2 places)
09	161986	WARNING – Read Manual
10	161987	WARNING – Engine Fan (2 places)
11	162449	Dozer Blade
12	162450	Travel – Left
13	162451	Travel – Right
14	162452	Right Joystick Control
15	162453	Left Joystick Control
16	162458 **	Cabin Tilt
17	163973	WARNING – Mandatory Shutdown
18	163974	Manual Throttle
19	163975	WARNING – Avoid Injury (2 places)
20	163976	WARNING – Avoid Injury
21	163977	WARNING – Entanglement Hazard
22	163978	WARNING – Hot Surface
23	164853	Engine Compartment Latch
24	164854	WARNING – Avoid Injury (cabin models only)
25	9705282G	Track Spread
26	9705366G	Heater (cabin models only)
27	9705488G	Swing Lock
28	9705489G	Return Flow Control
29	9705501G	ISO/SAE Valve
30	9705502G	ROPS/FOPS
31	9705523G	Cabin Support
32	159519	GEHL
33	L82282	GEHL (2 places)
34	170178 *	193 (2 places)
	170179 **	223 (2 places)
	*	Decals used on 193 only
	**	Decals used on 223 only



Both Sides



193 – UNDERCARRIAGE



Ref. No.	Part No.	Description	Qty. Req.	Ref. No.	Part No.	Description	Qty. Req.
01	1922001G	BRACKET	1	23	161915	TUBE	2
02	1922200G	FRAME RIGHT	1	24	651412	CS M14-2.0 X 50 C 10.9	4
03	1922201G	FRAME LEFT	1	25	163752	SCREW	24
04	2228006G	TELESCOPIC CYLINDER	1	26	163631	SCREW	20
05	160616	PROTECTION	1	27	162022	SCREW	34
06	160622	PIN	2	28	651430	CS M8-1.2 X 12 C 8.8	4
07	161399	SCREW	2	29	161643	WASHER/ROUND HI-TENS	24
08	161918	PLATE	4	30	651515	SHCS HS M8-1.2 X 20 8.8	8
09	160516	TRACK TENSION	2	31	161661	WASHER/GR A 8.4	4
10	160638	NON RETURN VALVE	2	33	161635	WASHER/NORD-LOCK NL 10	54
11	160517	ROLLER	8	34	161669	RING/SNAP S10	12
12	1422277G	COVER	2	35	161676	RING/SNAP S8	12
13	161920	SWIVEL JOINT	1	36	161671	RING/SNAP S14	4
14	1922215G	COVER	1	37	163646	NUT	2
15	162094	COVER	1	38	656052	HN M16-2.0	2
16	160636	TRAVELING GEAR W/MOTOR	2	39	651468	PIN/SPRING M8 X 70	1
17	160634	SPROCKET	2	40	651391	CS M10-1.5 X 20 C 8.8	12
18	1922401G	RUBBER CHAIN	2	41	161640	WASHER/GR A 10.5	12
19	1922216G	COVER	1	42	161647	WASHER/ROUND HI-TENS	2
20	161724	TURNTABLE	1	43	161649	WASHER/GR A 18	2
21	160865	SCREW SEAL	2	44	1922016G	UNDER CARRIAGE	1
22	1402306G	TENSION CYLINDER	2				

Thanks for your reading.

Please click here to download complete manual instantly.

And can also choose other manuals.

Feel free --->write to me with any questions.

Our service email:

manuals007@hotmail.com