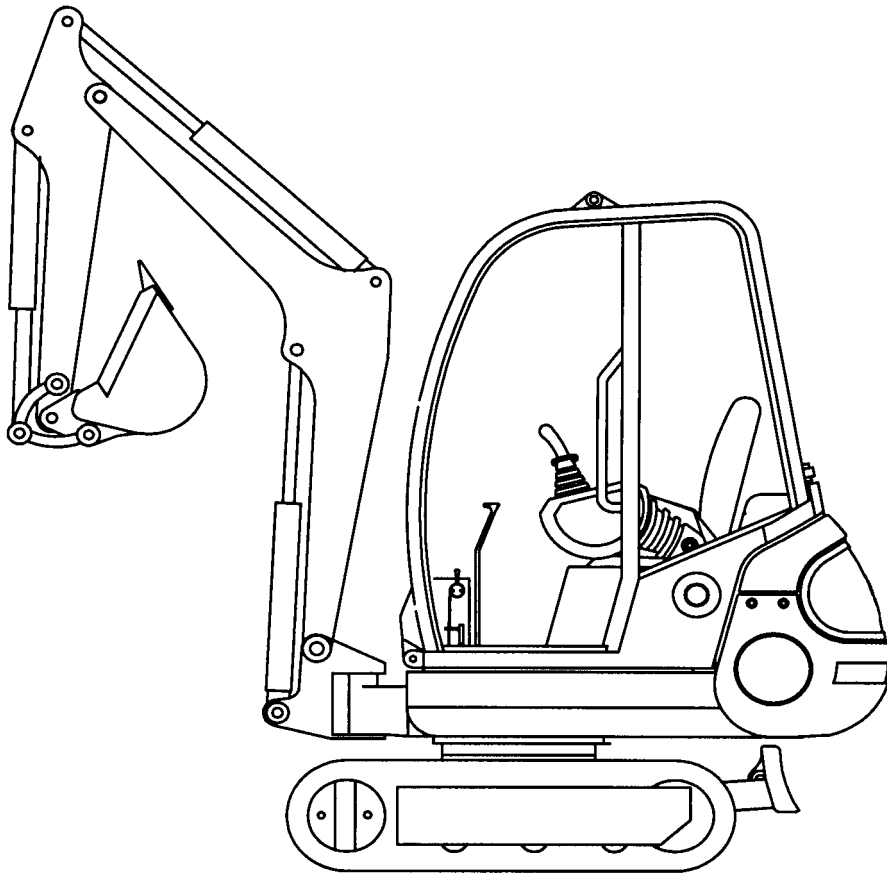


192-222

Mini-excavator



PARTS MANUAL

GEHL CONSTRUCTION

Introduction

When ordering service parts, specify the correct part number, full description, quantity required, the unit model number and serial number.

The Mini-excavator model and serial numbers are on a plate located on the lower left front outer side of the cabin (from the driver's perspective).

OUR Company reserves the right to make changes or improvements in the design or construction of any part of the unit without incurring the obligation to install such changes on any previously delivered units.

To ensure continued safe operation, replace damaged or worn-out parts with genuine Factory service parts, BEFORE attempting to operate this equipment.

Refer to the abbreviations table located on this page for the various fastener descriptions.

In the exploded view parts list, Reference numbers marked with an asterisk (*) indicate that the individual parts of the assembly are listed later in that section. Refer to the Table of Contents for locations of specific assemblies.

NOTE: *The following abbreviations may be used herein:*

AR	– As Required
ASSD	– Assembled
ASSY	– Assembly
CB	– Carriage Bolt
CCW	– Counterclockwise
CP	– Cotter Pin
CS	– Cap Screw (Hexagon Head)
CTR	– Center
CW	– Clockwise
DEG	– Degree
DIA	– Diameter
FCHC	
FCS	– Flanged Cap Screw
FHMS	– Flat Head Machine Screw
FL	– Flanged
FLN	– Flanged Lock Nut (Hexagon)
FLS	– Flanged Lock Screw (Hexagon)
FW	– Flat Washer
GA	– Gauge
GR	– Grade
HD	– Hard or Head
HLN	– Hex Lock Nut
HJN	– Hex Jam Nut
HN	– Hex Nut
HS	
INCL	– Includes
INS	
JT	– Joint
LG	– Large
LH	– Left Hand
LN	– Lock Nut
LW	– Lock Washer
M	– Metric
MM/mm	– Millimeter
NF	– National Fine
PB	– Plow Bolt
PTO	– Power Take Off
RH	– Right Hand
RHMS	– Round Head Machine Screw
RPM	– Revolutions Per Minute
RT	– Right
SERR	– Serrated
SHCS	– Socket Head Cap Screw
SHSS	– Socket Head Set Screw
SN	– Serial Number or Slotted Nut
SQ	– Square
SQSS	– Square Head Set Screw
T	– Tooth or Teeth
TFS	– Thread Forming Screw
THMS	– Truss Head Machine Screw
THRD	– Thread
WLDMT	– Weldment
ZO	– Zinc Oxide Plating
#	– Number

Table of Contents

SECTION A: UNDERCARRIAGE5
UNDERCARRIAGE	6
MODEL 192 — UNDERCARRIAGE	6
MODEL 222 — UNDERCARRIAGE	8
MODELS 192-222 — TRACK TENSION	10
MODELS 192-222 — TRACK ROLLER	11
MODELS 192-222 — TRACK ROLLER	12
SECTION B: DOZER BLADE13
DOZER BLADE	14
MODELS 192-222 — DOZER BLADE	14
MODELS 192-222 — DOZER BLADE EXTENSION	15
SECTION C: CHASSIS17
CHASSIS	18
MODELS 192-222 — CHASSIS	18
MODELS 192-222 — CHASSIS COVERS	20
MODELS 192-222 — CHASSIS LUBRICATION	21
MODELS 192-222 — VALVE BRACKET	22
MODELS 192-222 — HOOD	23
SECTION D: TILT FRAME25
TILT FRAME	26
MODELS 192-222 — TILT FRAME	26
MODELS 192-222 — ISOLATION MATS	28
MODELS 192-222 — TOOL BOX	29
SECTION E: BOOM31
BOOM	32
MODELS 192-222 — BOOM	32
MODELS 192-222 — STICK	34
SECTION F: CABIN37
CABIN	38
MODELS 192-222 — CABIN	38
MODELS 192-222 — CABIN FRAME	40
MODELS 192-222 — RADIO KIT	42
MODELS 192-222 — CABIN CABLES	43
MODELS 192-222 — WINDSHIELD	44
MODELS 192-222 — LOWER FRONT WINDSHIELD	46
MODELS 192-222 — UPPER FRONT WINDSHIELD	47
MODELS 192-222 — SIDE WINDOW	48
MODELS 192-222 — REAR WINDOW	49
MODELS 192-222 — CABIN DOOR	50
MODELS 192-222 — WINDSHIELD WASHER	52
MODELS 192-222 — DRIVERS SEAT	53
MODELS 192-222 — CAB HEATING	54
SECTION G: DIESEL ENGINE55
DIESEL ENGINE	56
MODELS 192-222 — DIESEL ENGINE	56

MODELS 192-222 — ENGINE SUSPENSION.....	57
MODELS 192-222 — COOLING WATER RADIATOR	58
MODELS 192-222 — AIR INTAKE	59
MODELS 192-222 — EXHAUST	60
MODELS 192-222 — FUEL LINE.....	61
MODELS 192-222 — ACCELERATOR	62
MODELS 192-222 — DIESEL TANK.....	63

SECTION H: HYDRAULIC SYSTEM65

HYDRAULIC SYSTEM	66
MODELS 192-222 — HYDRAULIC PUMP	66
MODELS 192-222 — HYDRAULIC OIL TANK	67
MODELS 192-222 — HYDRAULIC PUMP	68
MODELS 192-222 — HYDRAULIC OIL COOLER	69
MODELS 192-222 — TRAVELING MOTORS	70
MODELS 192-222 — VALVE ANGLE.....	72
MODELS 192-222 — CONTROL VALVE	74
MODELS 192-222 — PILOT OIL SUPPLY UNIT	76
MODEL 192 — SWIVEL JOINT.....	77
MODEL 222 — SWIVEL JOINT.....	78
MODELS 192-222 — TURNING MOTOR	79
MODELS 192-222 — SELECTION VALVE	80
MODELS 192-222 — CONTROL LEVERS	81
MODEL 222 — LOCK VALVE.....	82
MODEL 192 — DOZER BLADE VALVE	83
MODEL 222 — DOZER BLADE VALVE	84
MODELS 192-222 — BALL VALVE	85
MODELS 192-222 — DOZER BLADE CYLINDER	86
MODELS 192-222 — BOOM OFFSET CYLINDER	87
MODELS 192-222 — BOOM CYLINDER	88
MODELS 192-222 — STICK CYLINDER	89
MODELS 192-222 — BUCKET CYLINDER	90
MODELS 192-222 — TELESCOPIC CYLINDER	91
MODEL 222 — TILT CYLINDER	92
MODELS 192-222 — DOZER BLADE VALVE INSTALLATION	93
MODELS 192-222 — HYDRAULIC OIL COOLER INSTALLATION	94
MODEL 192 — TRAVELING MOTOR INSTALLATION	95
MODEL 222 — TRAVELING MOTOR INSTALLATION	96
MODELS 192-222 — TURNING MOTOR INSTALLATION.....	97
MODELS 192-222 — PILOT OIL SUPPLY UNIT INSTALLATION.....	98
MODELS 192-222 — BOOM OFFSET CYLINDER INSTALLATION	99
MODEL 192 — DOZER BLADE CYLINDER INSTALLATION.....	100
MODEL 222 — DOZER BLADE CYLINDER INSTALLATION	101
MODEL 192 — TELESCOPIC CYLINDER INSTALLATION.....	102
MODEL 222 — TELESCOPIC CYLINDER INSTALLATION.....	103
MODEL 222 — TILT CYLINDER INSTALLATION	104
MODELS 192-222 — BOOM CYLINDER INSTALLATION.....	105
MODELS 192-222 — AUXILIARY HYDRAULICS INSTALLATION	106
MODELS 192-222 — HAND LEVER INSTALLATION.....	107

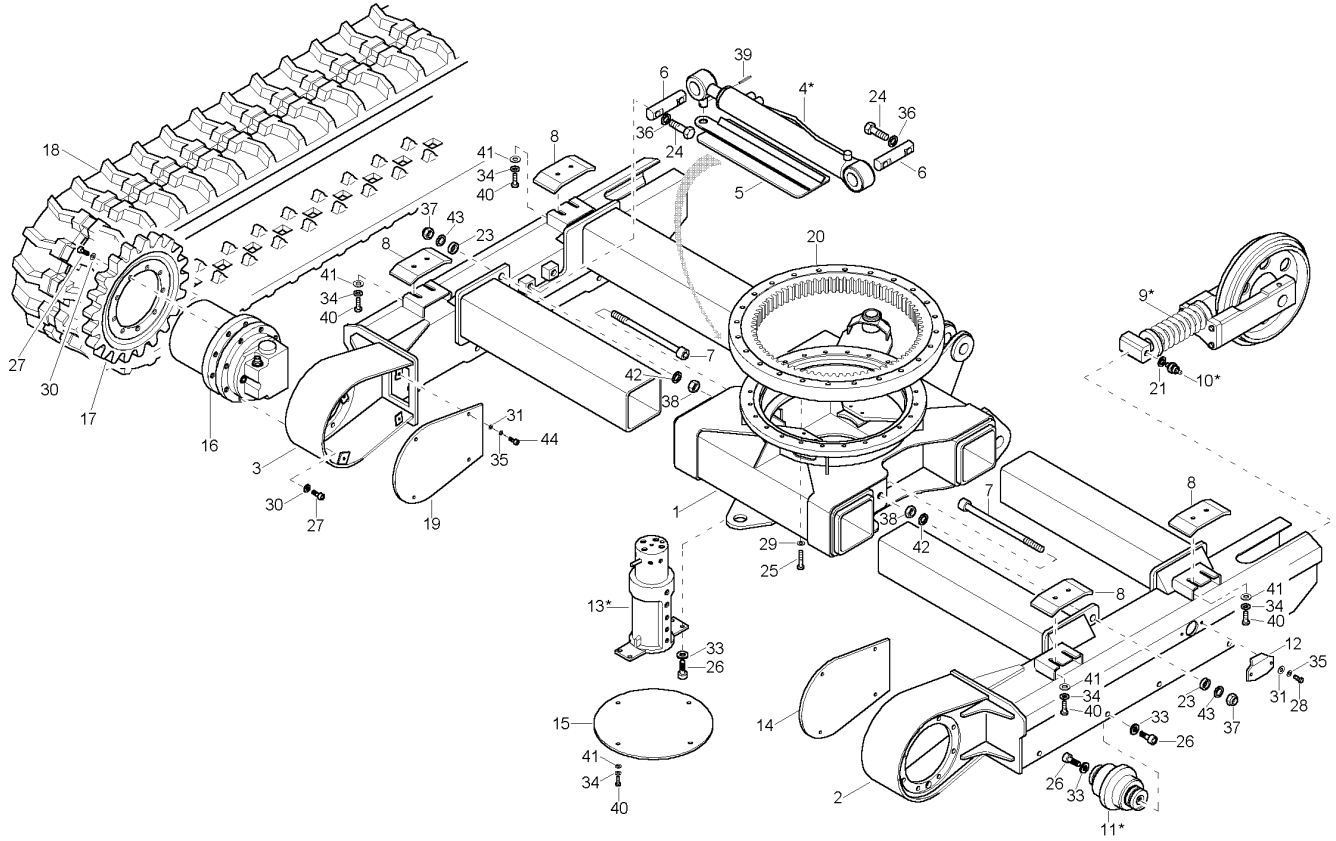
SECTION I: ELECTRICAL SYSTEM	109
ELECTRICAL SYSTEM	110
MODELS 192-222 — ELECTRICAL INSTALLATION 1	110
MODELS 192-222 — ELECTRICAL INSTALLATION 2	111
MODELS 192-222 — BATTERY INSTALLATION	112
MODELS 192-222 — CONTROL BOARD	113
MODELS 192-222 — RELAY BOX	114
MODELS 192-222 — HEADLIGHTS	115
MODELS 192-222 — HORN	116
SECTION J: TOOLS	117
TOOLS	118
MODELS 192-222 — TOOLS	118
SECTION K: DECALS	119
DECALS	120
MODEL 192 — DECALS	120
MODEL 222 — DECALS	121

SECTION A: UNDERCARRIAGE

UNDERCARRIAGE	6
MODEL 192 — UNDERCARRIAGE	6
MODEL 222 — UNDERCARRIAGE	8
MODELS 192-222 — TRACK TENSION.....	10
MODELS 192-222 — TRACK ROLLER.....	11
MODELS 192-222 — TRACK ROLLER.....	12

SECTION A: UNDERCARRIAGE

**MODELS 192-222 MINI-EXCAVATOR
 UNDERCARRIAGE
 MODEL 192 — UNDERCARRIAGE**



ET1920100

* Reference numbers marked with an asterisk (*) indicate that the individual parts of the assembly are listed later in this section. Refer to the Table of Contents for locations of specific assemblies.

**MODELS 192-222 MINI-EXCAVATOR
UNDERCARRIAGE
MODEL 192 — UNDERCARRIAGE**

Ref. No.	Part No.	Description	Qty. Req.	Ref. No.	Part No.	Description	Qty. Req.
REF	162098	UNDERCARRIAGE ASSEMBLY	1	23	161915	TUBE.....	2
1	162097	BRACKET	1	24	651412	CS M14-2.0 X 50 C 10.9 ZO.....	4
2	162095	FRAME	1	25	651408	CS M12-1.7 X 40 C 10.9 ZO.....	24
3	162096	FRAME	1	26	651474	SHCS HS M10-1.2 X 25 10.9 ZO D912	20
4	160679	TELESCOPIC CYLINDER.....	1	27	162022	SCREW.....	34
5	160616	COVER	1	28	656093	CS M8-1.2 X 16 C 8.8 ZO.....	4
6	160622	PIN.....	2	29	161643	WASHER/ROUND HI-TENS DIN6916	24
7	161399	SCREW	2	30	161623	LW SPRING B10 DIN7981	34
8	161918	PLATE	4	31	161661	WASHER/GR A 8.4 ZO	12
9	160516	TRACK TENSION	2	33	161635	WASHER/NORD-LOCK NL 10 STUCK	20
10	160638	NON RETURN VALVE	2	34	161669	LOCKWASHER S10	16
11	160517	ROLLER.....	8	35	161676	LOCKWASHER S8	12
12	161930	COVER	2	36	161671	LOCKWASHER S14	4
13	161920	SWIVEL JOINT	1	37	651451	HLN INS M16-2.0 ZO	2
14	161917	COVER	1	38	656052	HN M16-2.0 ZO.....	2
15	162094	COVER	1	39	651468	PIN/SPRING M8 X 70 D1481	1
16	160633	TRAVELING GEAR	2	40	651391	CS M10-1.5 X 20 C 8.8 ZO	12
17	160634	SPROCKET	2	41	161640	WASHER/GR A 10.5 ZO.....	12
18	160624	RUBBER TRACK.....	2	42	161647	WASHER/ROUND HI-TENS 17	2
19	161916	COVER	1	43	161649	WASHER/GR A 18 ZO DIN7989.....	2
20	161724	TURNTABLE	1	44	651515	SHCS HS M8-1.2 X 20 8.8 ZO D912	8
21	160865	SCREW SEAL.....	2				

Thanks for your reading.

Please click here to download complete manual instantly.

And can also choose other manuals.

Feel free --->write to me with any questions.

Our service email:

manuals007@hotmail.com