

# 170

# Gehl Mix-all®

Form No.  
**907577**  
Replaces  
906367

## PARTS MANUAL

**GEHL®** AGRICULTURE

## Introduction

When ordering service parts, specify the correct part number, full description, quantity required, the unit model number and serial number.

The model number and serial number for this unit are located on the Frame member in the rear at the base of the Tank. The Swinging Auger Feeder model and serial number (on units so equipped) are also on a decal attached to the unit.

“Right” and “Left” are determined from a position standing behind the Mixer. From this position, the Feeder Attachment is on the “right” side.

GEHL® Company reserves the right to make changes or improvements in the design or construction of any part of the unit without incurring the obligation to install such changes on any previously delivered units.

**NOTE:** *On original tire replacement, company policy prohibits the sale of replacement tires for all GEHL machinery. Replacement Wheel Sets are available and tire size information is called out with the Wheel Sets to facilitate replacement tire selection. ALL REPLACEMENT TIRES MUST BE PURCHASED LOCALLY.*

Refer to the abbreviations table located on this page for the various fastener descriptions. Standard attaching hardware torque values are also provided on the inside back cover.

In the exploded view parts list, Reference Numbers may have additional information following the Reference Number.

A Tear Drop symbol will indicate an application of a “wet” product such as oil, and the number inside the Tear Drop will correspond to the description in the Parts List.

Also, a number inside a hexagon will be the torque value required, in foot pounds, on the associated Reference Number. Items shown in the parts list that do not have Reference Numbers are shown for reference purposes only and are NOT available for purchase.

Unless otherwise specified, all Cap Screws or Bolts are Grade 5, cadmium or zinc plated; Hexagon Nuts for Grade 5 Screws or Bolts are Grade B; Hexagon Nuts for other Screws or Bolts are Grade A.

**NOTE:** *The following abbreviations may be used herein:*

|   |                                   |
|---|-----------------------------------|
| AR  | – As Required                     |
| ASSD  | – Assembled                       |
| ASSY  | – Assembly                        |
| CB  | – Carriage Bolt                   |
| CP  | – Cotter Pin                      |
| CS  | – Cap Screw (Hexagon Head)        |
| CTR   | – Center                          |
| DEG   | – Degree                          |
| DIA   | – Diameter                        |
| FCS   | – Flanged Cap Screw               |
| FHMS  | – Flat Head Machine Screw         |
| FL  | – Flanged                         |
| FLN   | – Flanged Lock Nut (Hexagon)      |
| FLS   | – Flanged Lock Screw (Hexagon)    |
| FR  | – Feed Roll                       |
| FW  | – Flat Washer                     |
| GA  | – Gauge                           |
| GF  | – Gravity Feeder                  |
| GR  | – Grade                           |
| HD  | – Hard or Head                    |
| HHM   | – Hexagon Head Machine            |
| HN  | – Hex Nut                         |
| INCL  | – Includes                        |
| JN  | – Jam Nut                         |
| LN  | – Lock Nut                        |
| LW  | – Lock Washer                     |
| M   | – Metric                          |
| MM/mm   | – Millimeter                      |
| NF  | – National Fine                   |
| NILN  | – Nylon Insert Lock Nut           |
| PB  | – Plow Bolt                       |
| PTO   | – Power Take Off                  |
| RHMS  | – Round Head Machine Screw        |
| RPM   | – Revolutions Per Minute          |
| RT  | – Right                           |
| SAF   | – Swinging Auger Feeder           |
| SAF/FR  | – Swinging Auger Feeder/Feed Roll |
| SERR  | – Serrated                        |
| SHCS  | – Socket Head Cap Screw           |
| SHSS  | – Socket Head Set Screw           |
| SN  | – Serial Number or Slotted Nut    |
| SQ  | – Square                          |
| T   | – Tooth or Teeth                  |
| TFS   | – Thread Forming Screw            |
| THMS  | – Truss Head Machine Screw        |
| THRD  | – Thread                          |
| WLDMT   | – Weldment                        |
| WN  | – Wing Nut                        |
| #   | – Number                          |
|  | – Torque Required in foot pounds  |
|  | – Indicates a Fluid Application   |

# TABLE OF CONTENTS

|   |                    |
|---|--------------------|
| Introduction .....  | Inside Front Cover |
| Table of Contents .....   | 1                  |
| Decal Locations .....   | 2-11               |
| Frame, Axles & Hitchjack .....                                    | 12-13              |
| Tank & Discharge Conveyor .....                                   | 14-15              |
| Concentrate Hopper & Collector .....                              | 16-17              |
| Unloading Conveyor .....  | 18-19              |
| Conveyor Winch .....  | 20-21              |
| Implement Drive Line .....  | 22-23              |
| Concentrate Hopper Drive .....                                    | 24-25              |
| Jackshaft Drive .....   | 26-27              |
| Conveyor Drive .....  | 28                 |
| Mill Cylinder, Frame & Blower .....                               | 29-33              |
| Drive Guards .....  | 34-35              |
| Hydraulics System .....   | 36-39              |
| Hydraulics Components .....                                       | 40-41              |
| Flow Control Valve .....  | 40                 |
| Flow Regulator Valve .....  | 40                 |
| Gresen Selector Valve .....                                       | 40                 |
| Cross Selector Valve .....  | 40                 |
| Charlynn & Ross Motors .....                                      | 41                 |
| Universal Drives .....  | 42-43              |
| Transmission .....  | 44                 |
| Hitchjack Components .....  | 45                 |
| Optional Feeder Attachments .....                                 | 46-65              |
| Swinging Auger Feeder (SAF) .....                                 | 46-49              |
| Gravity Feeder (GF) .....   | 50-52              |
| Swinging Auger Feeder w/Feed Roll (SAF/FR) .....                  | 53-55              |
| Feed Roll Feeder (FR) .....                                       | 56-57              |
| Power Bale Feeder .....   | 58-65              |
| Accessories .....   | 66-83              |
| Electric Remote Unloading Conveyor Control .....                  | 66-67              |
| Molasses Attachment .....   | 68-69              |
| Small Grain Auger .....   | 70-71              |
| Auxiliary Remote Control .....                                    | 72                 |
| Winch Reduction Drive Kit .....                                   | 72                 |
| Control Box .....   | 73                 |
| Conveyor Worm Control .....                                       | 73                 |
| Folding Unloading Conveyor Extensions (4-Ft or 7-1/2-Ft) .....    | 74                 |
| Conveyor Extensions (1-Ft or 3-Ft) .....                          | 75                 |
| Conveyor Extension Pivot .....                                    | 75                 |
| Model 1500, 2100 & 3200 Scales (Factory or Field Installed) ..... | 76-77              |
| Model 5 or Model 10 Scales (Factory or Field Installed) .....     | 78                 |
| Scale Battery Mounting Kit .....                                  | 79                 |
| Remote Scale Indicator, Audible & Visual Alarms .....             | 80                 |
| Transport Lights .....  | 81                 |
| Double Bagger Attachment .....                                    | 82                 |
| Screens .....   | 82                 |
| Safety Chain .....  | 82                 |
| Fender Set .....  | 83                 |
| PBF Table Extension .....   | 83                 |
| Alphabetical Index .....  | 84                 |
| Numerical Index .....   | 85-95              |
| Standard Hardware Torque Specifications .....                     | Inside Back Cover  |

# DECAL LOCATIONS

## GENERAL INFORMATION

Decal Locations information is provided to assist in the proper selection and application of new decals, in the event the original decal(s) become(s) damaged or the machine is repainted. Refer to the listing for the illustration reference number, part number, description and quantity of each decal provided in the Kit. Refer to the appropriate illustration(s) for replacement location(s).

**NOTE:** Refer to the SAFETY Chapter of the Operator's Manual for the specific information provided on all of the various Safety Decals furnished in the Decal Kit(s).

To ensure proper selection for correct replacement decal(s), compare all of the various illustrations to your machine BEFORE starting to refinish the unit. Then circle each decal applicable to your machine and check off its part number in the listing. After you have verified all the decals needed for replacement, set aside unneeded decals for disposal.

## NEW DECAL APPLICATION

Surfaces MUST be free from dirt, dust, grease and other foreign material before applying the new decal. To apply a solid-formed decal, remove the smaller portion of the decal backing paper and apply this part of the exposed adhesive backing to the clean surface while maintaining proper position and alignment. Slowly peel off the other portion of the backing paper while applying hand pressure to smooth out the decal surface.



## CAUTION

**ALWAYS** read and follow the safety rules and information shown on decals. If decals are damaged or unreadable, or if the unit is repainted, they **MUST** be replaced. If repainting, **MAKE SURE ALL** decals which apply to your machine are properly affixed to your unit in their proper locations.

### PAINT NOTICE

Use this list to order paint for refinishing machines with agricultural red and grey color scheme:

|               |   |
|---------------|---|
| <b>906315</b> | <b>One Gal. AG Red</b>                  |
| <b>902872</b> | <b>One Qt. Light Grey</b>               |
| <b>906316</b> | <b>6 (12 oz. Spray Cans) AG Red</b>     |
| <b>902874</b> | <b>6 (12 oz. Spray Cans) Light Grey</b> |

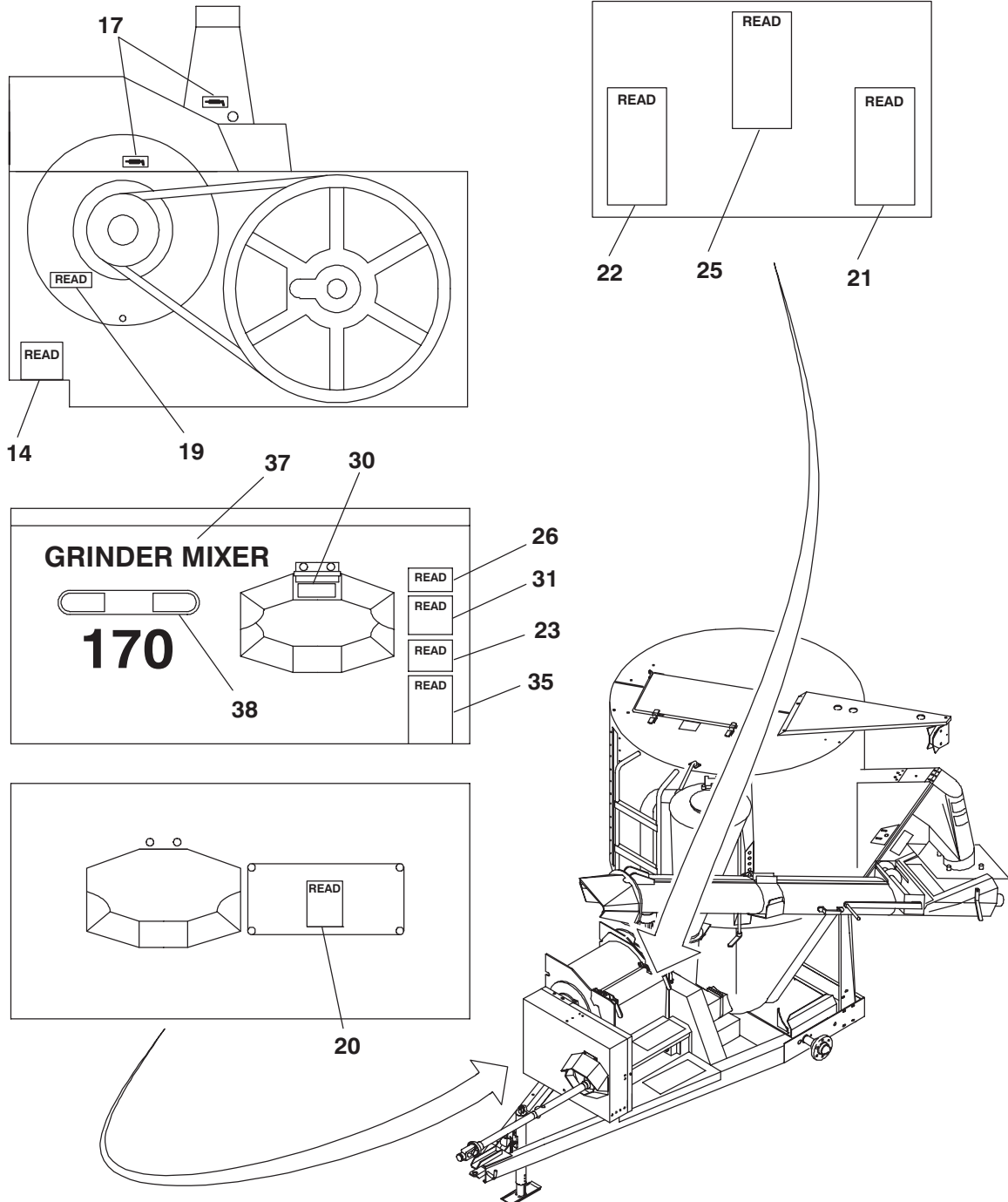
Use this list to order paint for refinishing machines with blaze red and maize (yellow) color scheme:

|               |  |
|---------------|--|
| <b>901225</b> | <b>One Gal. Blaze Paint</b>              |
| <b>901226</b> | <b>One Gal. Maize Paint</b>              |
| <b>610239</b> | <b>6 (12 oz. Spray Cans) Blaze Paint</b> |
| <b>610240</b> | <b>6 (12 oz. Spray Cans) Maize Paint</b> |

The Decal Set Number for the MX170 Mixer is 112420. The Set includes the following:

| <b>Ref. No.</b> | <b>Part No.</b> | <b>Description &amp; Quantity</b>  |
|-----------------|-----------------|--|
| 01              | 064873          | Wide Friction Surface Strip (3 Places)   |
| 02              | 064874          | Narrow Friction Surface Strip (3 Places)   |
| 03              | 065006          | Valve ON-OFF   |
| 04              | 065008          | Collector OPEN-CLOSED  |
| 05              | 065009          | Front Crank OPEN-CLOSED  |
| 06              | 065010          | Rear Crank CLOSED-OPEN   |
| 07              | 065011          | Belt Tension Adjustment  |
| 08              | 065012          | Brake Engagement   |
| 09              | 067493          | Red Reflector Strip (2 Places)   |
| 10              | 068169          | Special Roughage Instructions  |
| 11              | 069300          | Feed Capacity Chart  |
| 12              | 072313          | Decal - Filter (less Gauge) Use  |
| 13              | 074695          | Wiring Diagram (Remote Controls; <u>Not Shown</u> )  |
| 14              | 074952          | Auger Drive Shear Bolts  |
| 15              | 081101          | Transmission Drive Shear Bolts   |
| 16              | 091444          | DANGER - Rotating Drive Line   |
| 17              | 093020          | Lubrication Symbol (6 Places; 1 location <u>Not Shown</u> on Remote Controls)                |
| 18              | 093202          | DANGER - Avoid Electrical Contact  |
| 19              | 093365          | WARNING - Close or Replace Guard (5 Places; 2 locations <u>Not Shown</u> on Remote Controls) |
| 20              | 093366          | IMPORTANT - Store Manual Here  |
| 21              | 093367          | WARNING - Owner's Responsibility & Read Manual   |
| 22              | 093373          | WARNING - General Safety Precautions   |
| 23              | 093374          | WARNING - Highway Towing Precautions   |
| 24              | 093376          | WARNING - Keep Hands Out (5 Places; 2 locations <u>Not Shown</u> on Remote Controls)         |

| Ref. No. | Part No. | Description & Quantity   |
|----------|----------|--|
| 25       | 093378   | DANGER - Rotating Components   |
| 26       | 093436   | WARNING - Implement Hitchpin   |
| 27       | 093466   | WARNING - 540 RPM Operation Only   |
|          | 093465   | WARNING - 1000 RPM Operation Only  |
| 28       | 093490   | WARNING - Transport Latch Pin (4 & 7-1/2-ft. Extensions)                     |
| 29       | 093491   | WARNING - Winch Brake  |
| 30       | 093492   | WARNING - Clutch Pin Engagement  |
| 31       | 093493   | WARNING - Sheave Identification  |
| 32       | 093494   | WARNING - Transport Latch Pin  |
| 33       | 093495   | WARNING - Do NOT Combine with 7-1/2 ft. Extension (3-ft. Conveyor Extension) |
| 34       | 093496   | WARNING - Drive Chain  |
| 35       | 093653   | WARNING - Rotating Drive Line  |
| 36       | 094226   | Mixer Instructions   |
| 37       | 112369   | Grinder Mixer  |
| 38       | 112371   | 170 Colorbar   |
| 39       | 112373   | Gehl Mix-All (One Each Side)   |
| 40       | 126757   | Stripe - 3/4"X10' Roll (One Each Side)                                       |
| 41       | 143007   | DANGER - Shield Missing  |



**NOTE:** This list is a repeat of the Decal List on a previous page and is provided for your convenience when selecting Decals from the second page of illustrations.

| Ref. No. | Part No. | Description & Quantity   |
|----------|----------|--|
| 01       | 064873   | Wide Friction Surface Strip (3 Places)   |
| 02       | 064874   | Narrow Friction Surface Strip (3 Places)   |
| 03       | 065006   | Valve ON-OFF   |
| 04       | 065008   | Collector OPEN-CLOSED  |
| 05       | 065009   | Front Crank OPEN-CLOSED  |
| 06       | 065010   | Rear Crank CLOSED-OPEN   |
| 07       | 065011   | Belt Tension Adjustment  |
| 08       | 065012   | Brake Engagement   |
| 09       | 067493   | Red Reflector Strip (2 Places)   |
| 10       | 068169   | Special Roughage Instructions  |
| 11       | 069300   | Feed Capacity Chart  |
| 12       | 072313   | Decal - Filter (less Gauge) Use  |
| 13       | 074695   | Wiring Diagram (Remote Controls; <u>Not Shown</u> )  |
| 14       | 074952   | Auger Drive Shear Bolts  |
| 15       | 081101   | Transmission Drive Shear Bolts   |
| 16       | 091444   | DANGER - Rotating Drive Line   |
| 17       | 093020   | Lubrication Symbol (6 Places; 1 location <u>Not Shown</u> on Remote Controls)                |
| 18       | 093202   | DANGER - Avoid Electrical Contact  |
| 19       | 093365   | WARNING - Close or Replace Guard (5 Places; 2 locations <u>Not Shown</u> on Remote Controls) |
| 20       | 093366   | IMPORTANT - Store Manual Here  |
| 21       | 093367   | WARNING - Owner's Responsibility & Read Manual   |
| 22       | 093373   | WARNING - General Safety Precautions   |
| 23       | 093374   | WARNING - Highway Towing Precautions   |
| 24       | 093376   | WARNING - Keep Hands Out (5 Places; 2 locations <u>Not Shown</u> on Remote Controls)         |
| 25       | 093378   | DANGER - Rotating Components   |
| 26       | 093436   | WARNING - Implement Hitchpin   |
| 27       | 093466   | WARNING - 540 RPM Operation Only   |
|          | 093465   | WARNING - 1000 RPM Operation Only  |
| 28       | 093490   | WARNING - Transport Latch Pin (4 & 7-1/2-ft. Extensions)                                     |
| 29       | 093491   | WARNING - Winch Brake  |
| 30       | 093492   | WARNING - Clutch Pin Engagement  |
| 31       | 093493   | WARNING - Sheave Identification  |
| 32       | 093494   | WARNING - Transport Latch Pin  |
| 33       | 093495   | WARNING - Do NOT Combine with 7-1/2 ft. Extension (3-ft. Conveyor Extension)                 |
| 34       | 093496   | WARNING - Drive Chain  |
| 35       | 093653   | WARNING - Rotating Drive Line  |
| 36       | 094226   | Mixer Instructions   |
| 37       | 112369   | Grinder Mixer  |
| 38       | 112371   | 170 Colorbar   |
| 39       | 112373   | Gehl Mix-All (One Each Side)   |
| 40       | 126757   | Stripe - 3/4"X10' Roll (One Each Side)   |
| 41       | 143007   | DANGER - Shield Missing  |

**Thanks for your reading.**

**Please click here to download complete manual instantly.**

**And can also choose other manuals.**

**Feel free --->write to me with any questions.**

**Our service email:**

**manuals007@hotmail.com**