

Form No.  
909826

# 153

# Compact Excavator

**PARTS MANUAL**

**GEHL**<sup>®</sup>

## Introduction

When ordering service parts, specify the correct part number, full description, quantity required, the unit model number and serial number. For your safety and continued proper operation, use only genuine GEHL service parts.

The model and serial number for this unit are on a tag located on a panel on the front of the cabin.

“Right” and “left” are determined from a position sitting on the seat and facing forward. From this position, the cab is on the “left” and the hydraulic valve compartment is on the “right”.

GEHL® Company reserves the right to make changes or improvements in the design or construction of any part of the unit without incurring the obligation to install such changes on any previously delivered units.

Refer to the abbreviations table located on this page for the various fastener descriptions. Standard attaching hardware torque values are also provided on the inside back cover. Metric torque values shown in the illustra-

tions are in Newton-meters and can be converted to Foot-pounds by multiplying by 0.738.

In the exploded view parts list, Reference Numbers may have additional information following the Reference Number.

Unless otherwise specified, all Cap Screws or Bolts are Grade 5, cadmium or zinc plated; Hexagon Nuts for Grade 5 Screws or Bolts are Grade B; Hexagon Nuts for other Screws or Bolts are Grade A.

**NOTE:** *The following abbreviations may be used herein:*

CP	– Cotter Pin
CS	– Cap Screw (Hexagon Head)
FHCS	– Flat Head Cap Screw
HN	– Hex Nut
LN	– Lock Nut
LT	– Left Hand
M	– Metric
MM/mm	– Millimeter
RT	– Right

# TABLE OF CONTENTS

Introduction	Inside Front Cover	Control Valve	51
Decal Locations	2-7	Control Valve Segments	52
Undercarriage	8	Swivel Joint	53
Track Tensioning	9	Swivel Motor	54
Track-Supporting Roller	10	Optional Valve	55
Track Roller	11	Reversing Valve	56
Dozer Blade	12	Dozer Blade Valve (Double)	57
Dozer Blade Extensions	13	Dozer Blade Valve Breakdown (Double)	58
Uppercarriage	14	Hydraulic Block	59
Chassis Covers	15	Joysticks	60
Lubrication Block	16	Traveling Valve	61
Counterweight	17	Auxiliary Hydraulics	62
Engine Cover	18	Boom Cylinder	63
Seat Console	19	Dipper Arm Cylinder	64
Isolation Mats	20	Dipper Cylinder	65
Lifting Arm	21	Swivel Cylinder	66
Short Dipper Arm	22	Dozer Blade Cylinder	67
Long Dipper Arm	23	Track Spreading Cylinder	68
Connecting Link	24	Hoses, Oil Cooler	69
Open Canopy	25	Hoses, Hydraulic Pump	70
Cabin Frame	26-27	Hoses, Traveling Motor	71
Covers	28-29	Hoses, Swivel Motor	72
Cabin Door	30	Hoses, Reversing Valve	73
Cabin Windows	31	Hoses, Dozer Blade Cylinder	74
Windshield	32	Hoses, Track Cylinder	75
Heating (Cabin Models)	33	Hoses, Joysticks	76
Cabin Wire Harness	34	Hoses, Travel Valve	77
Operator's Seat	35	Hoses, Dipper Arm	78
Diesel Engine	36-37	Hoses, Dipper Arm (Long)	79
Engine Mounts	38-39	Battery	80
Radiator	40	Wire Harness, Right Armrest	81
Air Cleaner	41	Wire Harness, Left Armrest	82
Exhaust	42	Wire Harness, Engine	83
Fuel System	43	Wire Harness, Chassis	84
Throttle	44	Relay Box	85
Diesel Tank	45	Headlight	86
Pump Drive	46	Horn	87
Hydraulic Oil Tank	47	Tool Kit	88
Hydraulic Pump	48	Alphabetical Index	89
Oil Cooler	49	Numerical Index	90-97
Travel Motors	50	Torque Chart	Inside Rear Cover

# DECAL LOCATIONS

## GENERAL INFORMATION

Decal location information is provided to assist in the proper selection and application of new decals, in the event the original decals become damaged or the machine is repainted. Refer to the listing for the illustration reference number, part number, description and quantity of each decal provided in the kit. Refer to the appropriate illustrations for replacement locations.

To ensure proper selection of the correct replacement decals, compare all of the various closeup location drawings to your machine before starting to refinish the unit. Then circle each shown decal (applicable to your machine) while checking off its part number in the listing. After you have verified all the decals needed for replacement, place any extra unnecessary decals aside for disposal.

**NOTE:** Refer to the SAFETY chapter of the Operator's Manual for the specific information provided on all of the various safety decals furnished in the decal kit(s).

## NEW DECAL APPLICATION

Surfaces MUST be free from dirt, dust, grease and other foreign material before applying the new decal. To apply, remove the smaller portion of the decal backing paper and apply this part of the exposed adhesive backing to the clean surface while maintaining proper position and alignment. Peel the other portion of the backing paper off slowly while applying hand pressure to smooth out the decal surface.



## CAUTION

**ALWAYS follow safety precautions on decals. Replace the decals if they are damaged, or if the unit is repainted. If repainting, BE SURE all applicable decals are affixed to your unit.**

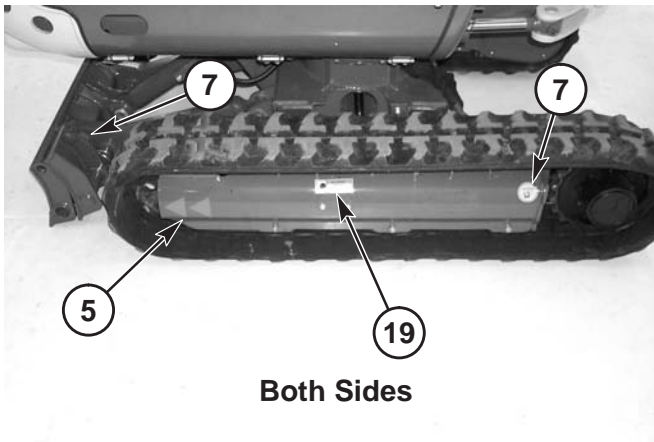
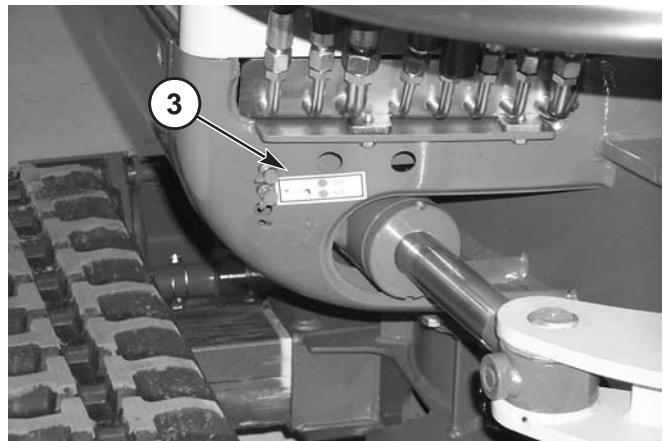
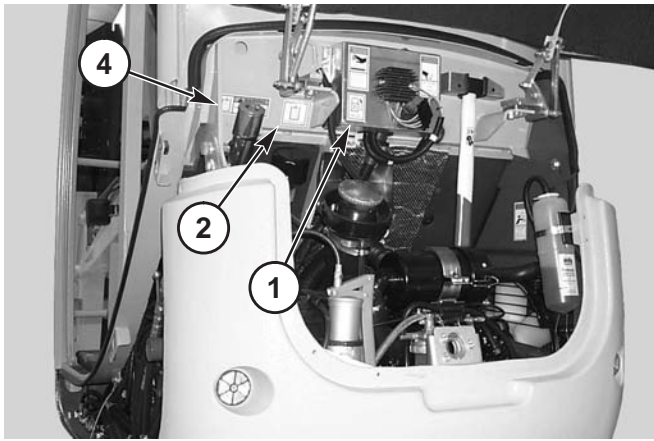
### PAINT NOTICE

Use this list to order paint for refinishing:

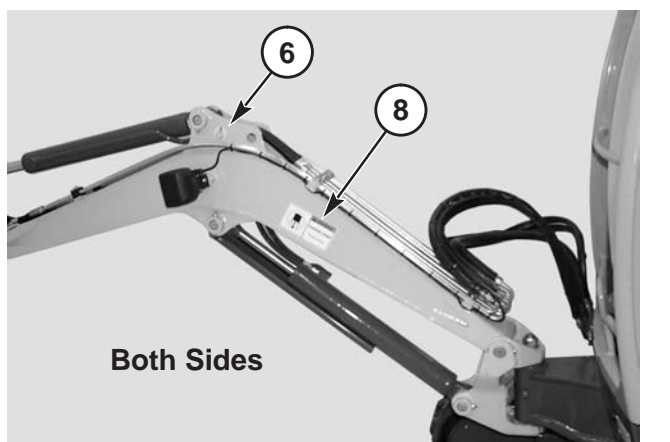
906213	One Gal. Construction Yellow
906323	One Qt. Charcoal Grey
906317	One Gal. Charcoal Grey
906214	6 (12 oz. Spray Cans) Yellow
906318	6 (12 oz. Spray Cans) Grey

Most of the decals are common to both units. Any differences are called out using asterisks. The decal kits for the model 153 Compact Excavator is listed below:

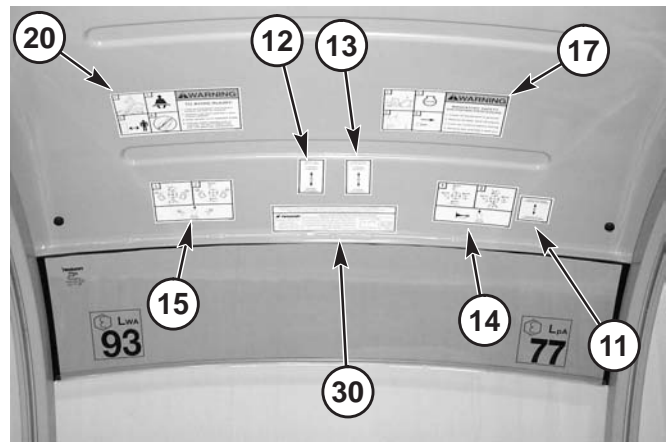
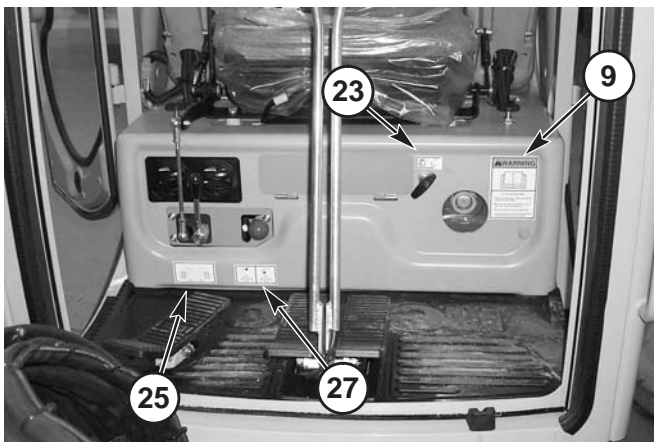
Ref. No.	Part No.	Description & Quantity
	165991	Decal Kit - <b>153</b>
01	161965	Diesel Fuel
02	161966	Hydraulic Oil
03	161967	Lubrication
04	161969	WARNING – Hydraulic Reservoir
05	161970	Arrow (2 places)
06	161981	Lift Point (4 places)
07	161982	Tiedown Point (4 places)
08	161985	WARNING – Keep Away (2 places)
09	161986	WARNING – Read Manual
10	161987	WARNING – Engine Fan (2 places)
11	162449	Dozer Blade
12	162450	Travel – Left
13	162451	Travel – Right
14	162452	Right Joystick Control
15	162453	Left Joystick Control
17	163973	WARNING – Mandatory Shutdown
18	163974	Manual Throttle
19	163975	WARNING – Avoid Injury (2 places)
20	163976	WARNING – Avoid Injury
21	163977	WARNING – Entanglement Hazard
22	163978	WARNING – Hot Surface
23	164853	Engine Compartment Latch
24	164854	WARNING – Avoid Injury (cabin models only)
25	9705282G	Track Spread
26	9705366G	Heater (cabin models only)
27	9705488G	Swing Lock
28	9705489G	Return Flow Control
29	9705501G	ISO/SAE Valve
30	9705502G	ROPS/FOPS
31	9705523G	Cabin Support
32	159519	GEHL
33	L82282	GEHL (2 places)
34	170176	153 (2 places)



Both Sides

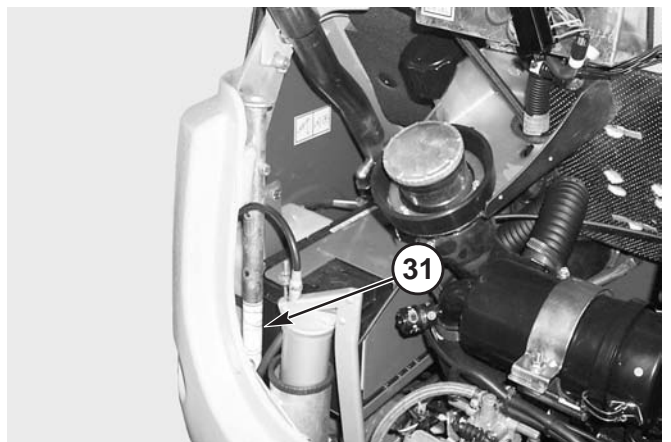
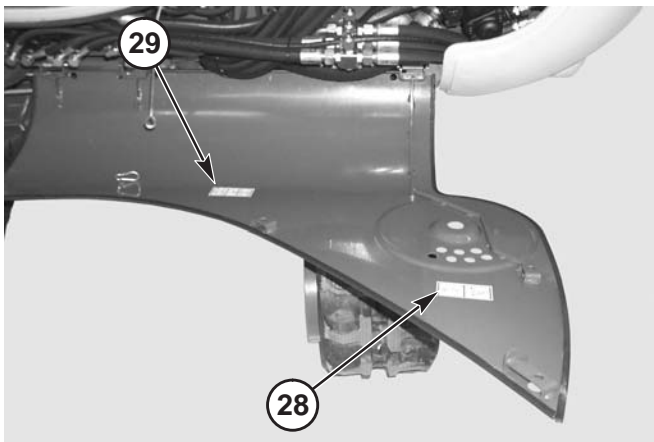
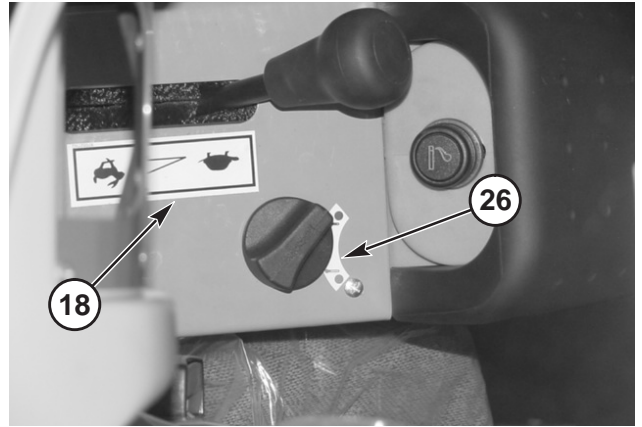
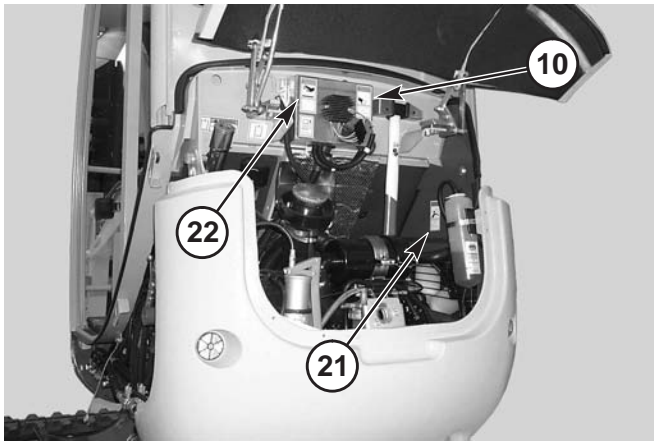
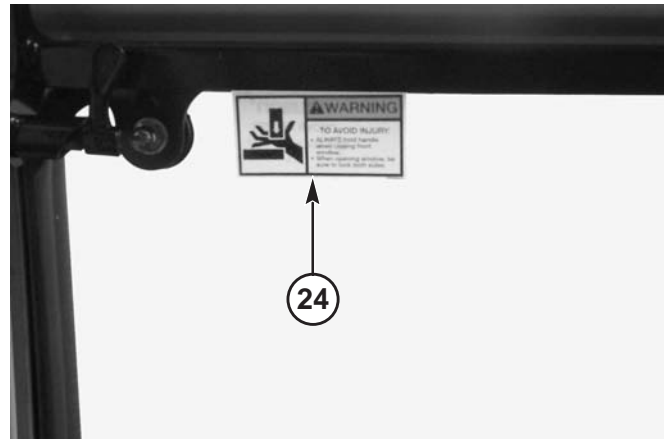
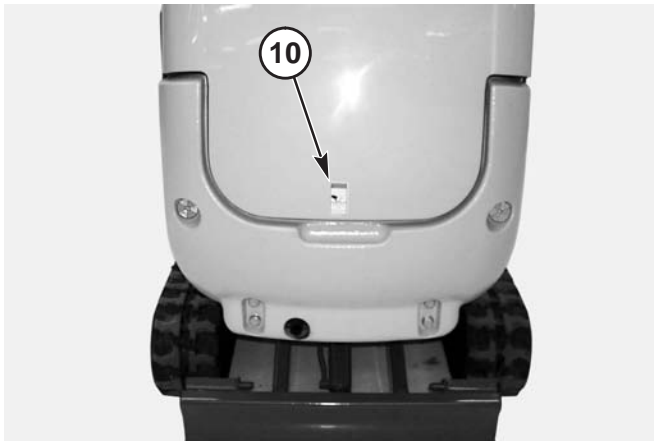


Both Sides



The decal listing has been repeated for your convenience.

<b>Ref. No.</b>	<b>Part No.</b>	<b>Description &amp; Quantity</b>
	165991	Decal Kit - <b>153</b>
01	161965	Diesel Fuel
02	161966	Hydraulic Oil
03	161967	Lubrication
04	161969	WARNING – Hydraulic Reservoir
05	161970	Arrow (2 places)
06	161981	Lift Point (4 places)
07	161982	Tiedown Point (4 places)
08	161985	WARNING – Keep Away (2 places)
09	161986	WARNING – Read Manual
10	161987	WARNING – Engine Fan (2 places)
11	162449	Dozer Blade
12	162450	Travel – Left
13	162451	Travel – Right
14	162452	Right Joystick Control
15	162453	Left Joystick Control
17	163973	WARNING – Mandatory Shutdown
18	163974	Manual Throttle
19	163975	WARNING – Avoid Injury (2 places)
20	163976	WARNING – Avoid Injury
21	163977	WARNING – Entanglement Hazard
22	163978	WARNING – Hot Surface
23	164853	Engine Compartment Latch
24	164854	WARNING – Avoid Injury (cabin models only)
25	9705282G	Track Spread
26	9705366G	Heater (cabin models only)
27	9705488G	Swing Lock
28	9705489G	Return Flow Control
29	9705501G	ISO/SAE Valve
30	9705502G	ROPS/FOPS
31	9705523G	Cabin Support
32	159519	GEHL
33	L82282	GEHL (2 places)
34	170176	153 (2 places)



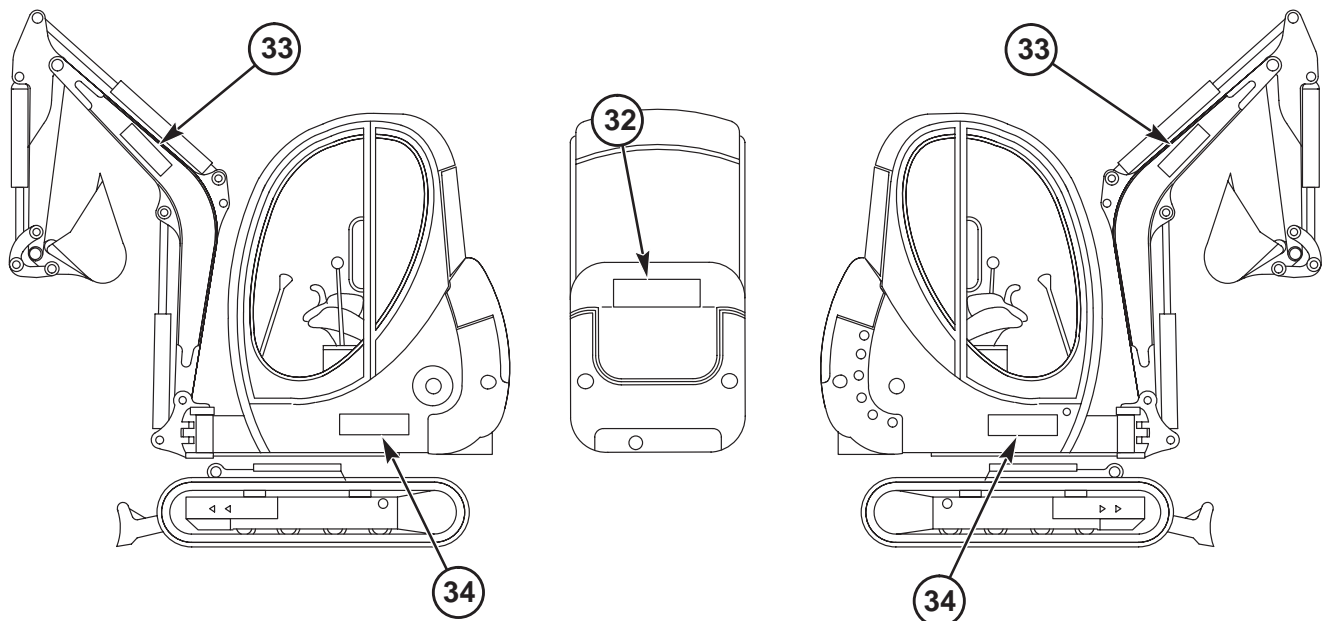
The decal listing has been repeated for your convenience.

<b>Ref. No.</b>	<b>Part No.</b>	<b>Description &amp; Quantity</b>
	165991	Decal Kit - <b>153</b>
01	161965	Diesel Fuel
02	161966	Hydraulic Oil
03	161967	Lubrication
04	161969	WARNING – Hydraulic Reservoir
05	161970	Arrow (2 places)
06	161981	Lift Point (4 places)
07	161982	Tiedown Point (4 places)
08	161985	WARNING – Keep Away (2 places)
09	161986	WARNING – Read Manual
10	161987	WARNING – Engine Fan (2 places)
11	162449	Dozer Blade
12	162450	Travel – Left
13	162451	Travel – Right
14	162452	Right Joystick Control
15	162453	Left Joystick Control
17	163973	WARNING – Mandatory Shutdown
18	163974	Manual Throttle
19	163975	WARNING – Avoid Injury (2 places)
20	163976	WARNING – Avoid Injury
21	163977	WARNING – Entanglement Hazard
22	163978	WARNING – Hot Surface
23	164853	Engine Compartment Latch
24	164854	WARNING – Avoid Injury (cabin models only)
25	9705282G	Track Spread
26	9705366G	Heater (cabin models only)
27	9705488G	Swing Lock
28	9705489G	Return Flow Control
29	9705501G	ISO/SAE Valve
30	9705502G	ROPS/FOPS
31	9705523G	Cabin Support
32	159519	GEHL
33	L82282	GEHL (2 places)
34	170176	153 (2 places)

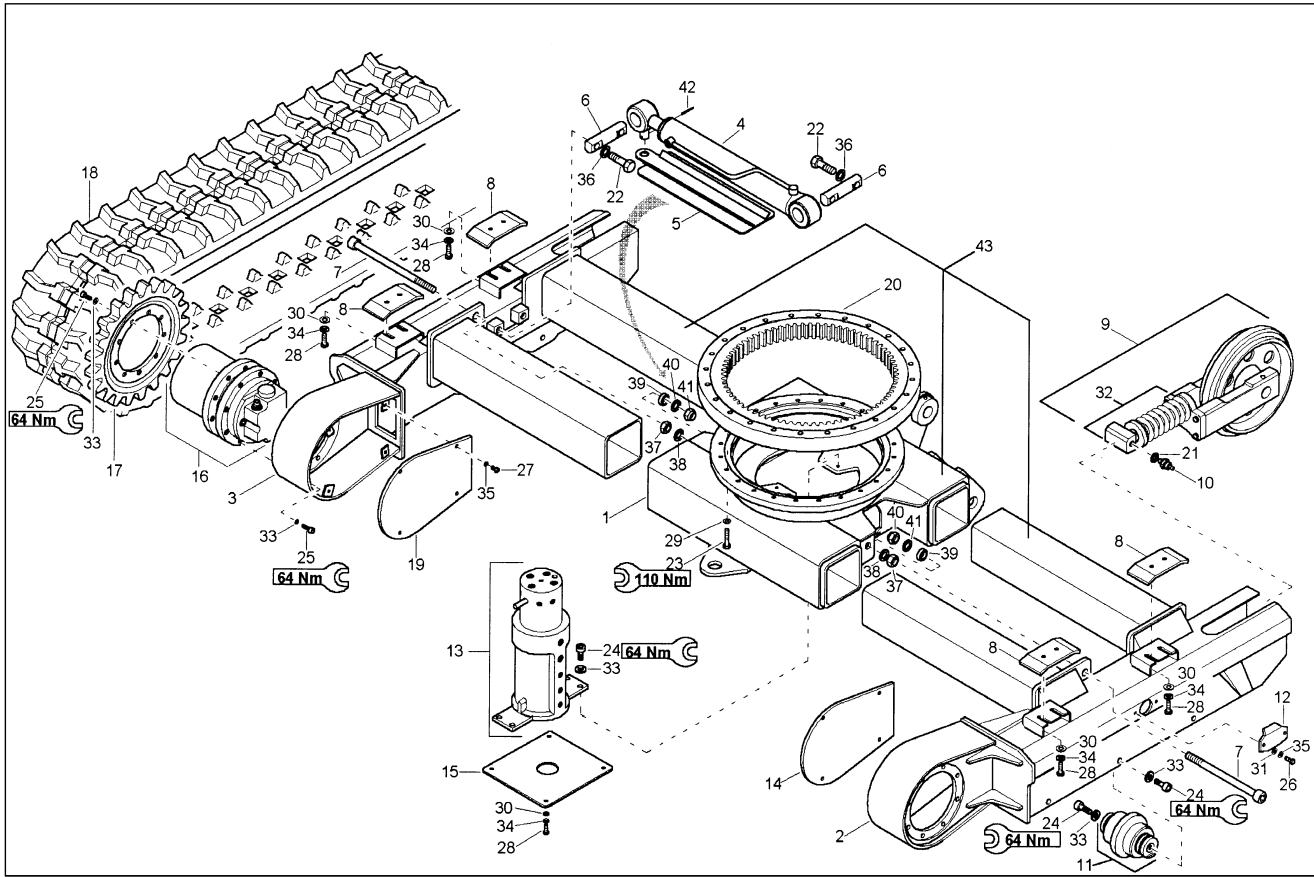




Both Sides



# 153 - UNDERCARRIAGE



Ref. No.	Part No.	Description	Qty. Req.	Ref. No.	Part No.	Description	Qty. Req.
01	1522001G	BRACKET	1	23	163752	SCREW	24
02	1522200G	FRAME RIGHT	1	24	163631	SCREW	16
03	1522201G	FRAME LEFT	1	25	162022	SCREW	34
04	160619	TELESCOPIC CYLINDER	1	26	651430	CS M8-1.2 X 12 C 8.8	4
05	160616	PROTECTION	1	27	651515	SHCS HS M8-1.2 X 20 8.8	8
06	160622	PIN	2	28	651391	CS M10-1.5 X 20 C 8.8	12
07	161399	SCREW	2	29	161643	WASHER/ROUND HI-TENS	24
08	161918	PLATE	4	30	161640	WASHER/GR A 10.5	12
09	160516	TRACK TENSION	2	31	161661	WASHER/GR A 8.4	4
10	160638	NON RETURN VALVE	2	32	1402306G	TENSION CYLINDER	2
11	160517	ROLLER	6	33	161635	WASHER/NORD-LOCK	50
12	1422277G	COVER	2	34	161669	RING/SNAP	12
13	161920	SWIVEL JOINT	1	35	161676	RING/SNAP	12
14	1422273G	COVER	1	36	161671	RING/SNAP	4
15	1522022G	COVER	1	37	656052	HN M16-2.0	2
16	160591	TRAVELING GEAR	2	38	161672	RING/SNAP	2
17	160519	SPROCKET	2	39	161915	TUBE	2
18	160624	RUBBER TRACK	2	40	161649	WASHER/GR A 18	2
19	1422274G	COVER	1	41	163646	NUT	2
20	161724	TURNTABLE	1	42	651468	PIN/SPRING M8 X 70	1
21	160865	SCREW SEAL	2	43	1522023G	UNDERCARRIAGE	1
22	651412	CS M14-2.0 X 50 C 10.9	4				

**Thanks for your reading.**

**Please click here to download complete manual instantly.**

**And can also choose other manuals.**

**Feel free --->write to me with any questions.**

**Our service email:**

**manuals007@hotmail.com**