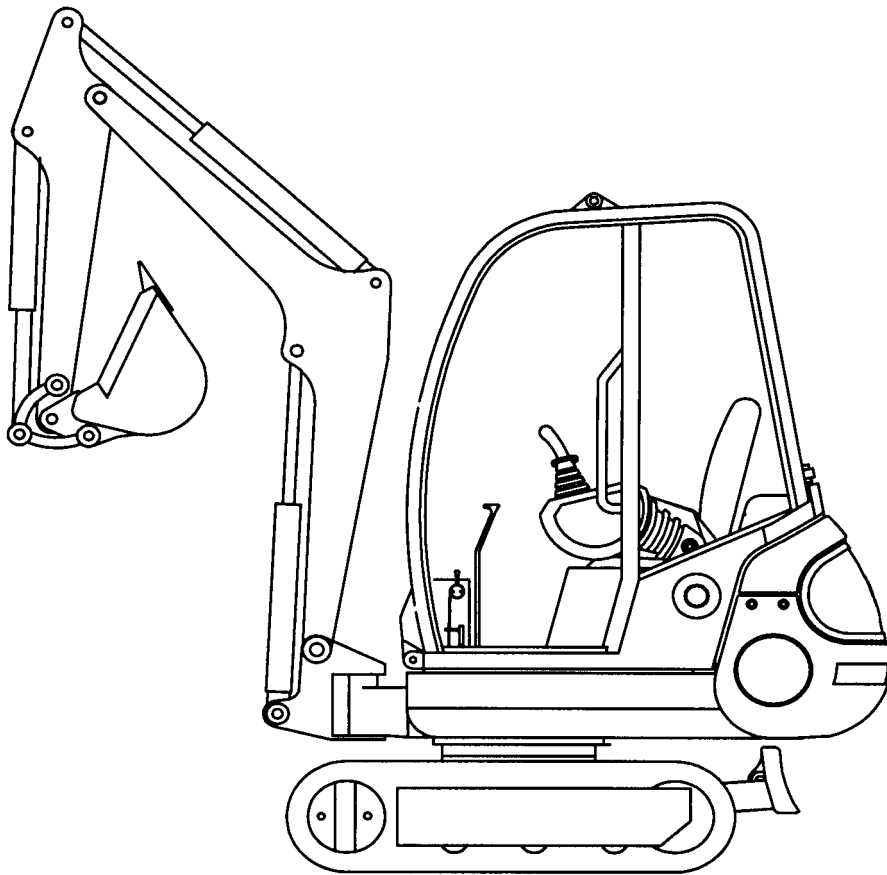


142-152

Form No.
908538

Mini-excavator



PARTS MANUAL

GEHL CONSTRUCTION

Introduction

When ordering service parts, specify the correct part number, full description, quantity required, the unit model number and serial number.

The Mini-excavator model and serial numbers are on a plate located on the lower left front outer side of the cabin (from the driver's perspective).

OUR Company reserves the right to make changes or improvements in the design or construction of any part of the unit without incurring the obligation to install such changes on any previously delivered units.

To ensure continued safe operation, replace damaged or worn-out parts with genuine Factory service parts, BEFORE attempting to operate this equipment.

Refer to the abbreviations table located on this page for the various fastener descriptions.

In the exploded view parts list, Reference numbers marked with an asterisk (*) indicate that the individual parts of the assembly are listed later in that section. Refer to the Table of Contents for locations of specific assemblies.

NOTE: *The following abbreviations may be used herein:*

| | |
|-------|--------------------------------|
| AR | – As Required |
| ASSD | – Assembled |
| ASSY | – Assembly |
| CB | – Carriage Bolt |
| CCW | – Counterclockwise |
| CP | – Cotter Pin |
| CS | – Cap Screw (Hexagon Head) |
| CTR | – Center |
| CW | – Clockwise |
| DEG | – Degree |
| DIA | – Diameter |
| FCHC | |
| FCS | – Flanged Cap Screw |
| FHMS | – Flat Head Machine Screw |
| FL | – Flanged |
| FLN | – Flanged Lock Nut (Hexagon) |
| FLS | – Flanged Lock Screw (Hexagon) |
| FW | – Flat Washer |
| GA | – Gauge |
| GR | – Grade |
| HD | – Hard or Head |
| HLN | – Hex Lock Nut |
| HJN | – Hex Jam Nut |
| HN | – Hex Nut |
| HS | |
| INCL | – Includes |
| INS | |
| JT | – Joint |
| LG | – Large |
| LH | – Left Hand |
| LN | – Lock Nut |
| LW | – Lock Washer |
| M | – Metric |
| MM/mm | – Millimeter |
| NF | – National Fine |
| PB | – Plow Bolt |
| PTO | – Power Take Off |
| RH | – Right Hand |
| RHMS | – Round Head Machine Screw |
| RPM | – Revolutions Per Minute |
| RT | – Right |
| SERR | – Serrated |
| SHCS | – Socket Head Cap Screw |
| SHSS | – Socket Head Set Screw |
| SN | – Serial Number or Slotted Nut |
| SQ | – Square |
| SQSS | – Square Head Set Screw |
| T | – Tooth or Teeth |
| TFS | – Thread Forming Screw |
| THMS | – Truss Head Machine Screw |
| THRD | – Thread |
| WLDMT | – Weldment |
| ZO | – Zinc Oxide Plating |
| # | – Number |

Table of Contents

| | |
|---|------------|
| SECTION A: UNDERCARRIAGE | .5 |
| UNDERCARRIAGE | 6 |
| MODEL 142 — UNDERCARRIAGE | 6 |
| MODEL 152 — UNDERCARRIAGE | 7 |
| MODELS 142-152 — TRACK TENSION | 8 |
| MODELS 142-152 — TRACK ROLLER | 9 |
| MODELS 142-152 — TRACK ROLLER | 10 |
| SECTION B: DOZER BLADE | .11 |
| DOZER BLADE | 12 |
| MODEL 142 — DOZER BLADE | 12 |
| MODEL 152 — DOZER BLADE | 13 |
| MODEL 152 — DOZER BLADE EXTENSIONS | 14 |
| SECTION C: CHASSIS | .15 |
| CHASSIS | 16 |
| MODEL 142 — CHASSIS | 16 |
| MODELS 142-152 — CHASSIS COVERS | 17 |
| MODELS 142-152 — CHASSIS LUBRICATION | 18 |
| MODELS 142-152 — VALVE BRACKET | 19 |
| MODELS 142-152 — HOOD | 20 |
| SECTION D: TILT FRAME | .21 |
| TILT FRAME | 22 |
| MODELS 142-152 — TILT FRAME | 22 |
| MODELS 142-152 — ISOLATION MATS | 24 |
| MODELS 142-152 — TOOLBOX | 25 |
| SECTION E: BOOM | .27 |
| BOOM | 28 |
| MODELS 142-152 — BOOM | 28 |
| MODELS 142-152 — STICK | 30 |
| MODELS 142-152 — BUCKET LINK | 31 |
| MODELS 142-152 — TELESCOPIC STICK | 32 |
| SECTION F: CABIN | .35 |
| CABIN | 36 |
| MODELS 142-152 — UNDERCARRIAGE | 36 |
| MODELS 142-152 — CABIN FRAME | 37 |
| MODELS 142-152 — RADIO KIT | 38 |
| MODELS 142-152 — CABIN CABLES | 39 |
| MODELS 142-152 — FRONT WINDSHIELD | 40 |
| MODELS 142-152 — LOWER FRONT WINDSHIELD | 42 |
| MODELS 142-152 — UPPER FRONT WINDSHIELD | 43 |
| MODELS 142-152 — SIDE WINDOW | 44 |
| MODELS 142-152 — REAR WINDOW | 45 |
| MODELS 142-152 — CABIN DOOR | 46 |
| MODELS 142-152 — WINDSHIELD WASHER | 48 |
| MODELS 142-152 — DRIVERS SEAT | 50 |
| MODELS 142-152 — CAB HEATING | 52 |

| | |
|---|------------|
| SECTION G: DIESEL ENGINE | .55 |
| DIESEL ENGINE | 56 |
| MODELS 142-152 — DIESEL ENGINE | 56 |
| MODELS 142-152 — ENGINE SUSPENSION | 57 |
| MODELS 142-152 — COOLING WATER RADIATOR | 58 |
| MODELS 142-152 — AIR INTAKE | 59 |
| MODELS 142-152 — EXHAUST | 60 |
| MODELS 142-152 — FUEL LINE | 61 |
| MODELS 142-152 — ACCELERATOR | 62 |
| MODELS 142-152 — DIESEL TANK | 63 |
| SECTION H: HYDRAULIC SYSTEM | .65 |
| HYDRAULIC SYSTEM | 66 |
| MODELS 142-152 — PUMP DRIVE | 66 |
| MODELS 142-152 — HYDRAULIC OIL TANK | 67 |
| MODELS 142-152 — HYDRAULIC PUMP | 68 |
| MODELS 142-152 — HYDRAULIC OIL COOLER | 69 |
| MODELS 142-152 — TRAVELING GEARS | 70 |
| MODELS 142-152 — VALVE ANGLE | 72 |
| MODELS 142-152 — CONTROL VALVE | 74 |
| MODELS 142-152 — CONTROL VALVE | 75 |
| MODELS 142-152 — PILOT OIL SUPPLY UNIT | 76 |
| MODEL 142 — SWIVEL JOINT | 77 |
| MODEL 152 — SWIVEL JOINT | 78 |
| MODELS 142-152 — TURNING MOTOR | 79 |
| MODELS 142-152 — SELECTION VALVE | 80 |
| MODELS 142-152 — HAND LEVERS | 81 |
| MODEL 142 — DOZER BLADE VALVE | 82 |
| MODEL 152 — DOZER BLADE VALVE | 83 |
| MODELS 142-152 — BALL VALVE | 84 |
| MODELS 142-152 — DOZER BLADE CYLINDER | 85 |
| MODELS 142-152 — BOOM OFFSET CYLINDER | 86 |
| MODELS 142-152 — BOOM CYLINDER | 87 |
| MODELS 142-152 — STICK CYLINDER | 88 |
| MODELS 142-152 — BUCKET CYLINDER | 89 |
| MODEL 152 — TELESCOPIC UNDERCARRIAGE CYLINDER | 90 |
| MODELS 142-152 — HYDRAULIC PUMP INSTALLATION | 91 |
| MODELS 142-152 — HYDRAULIC OIL COOLER INSTALLATION | 92 |
| MODELS 142-152 — HAND LEVERS INSTALLATION | 93 |
| MODEL 142 — TRAVELING MOTORS INSTALLATION | 94 |
| MODELS 142-152 — TURNING MOTOR INSTALLATION | 95 |
| MODELS 142-152 — PILOT OIL SUPPLY UNIT INSTALLATION | 96 |
| MODELS 142-152 — BOOM OFFSET CYLINDER INSTALLATION | 97 |
| MODEL 142 — DOZER BLADE CYLINDER INSTALLATION | 98 |
| MODELS 142-152 — BOOM INSTALLATION | 99 |
| MODELS 142-152 — AUXILIARY HYDRAULICS INSTALLATION | 100 |
| MODEL 152 — TRAVELING MOTORS INSTALLATION | 101 |
| MODEL 152 — DOZER BLADE VALVE INSTALLATION | 102 |
| MODEL 152 — TELESCOPIC CYLINDER INSTALLATION | 103 |
| MODEL 152 — TELESCOPIC STICK INSTALLATION | 104 |

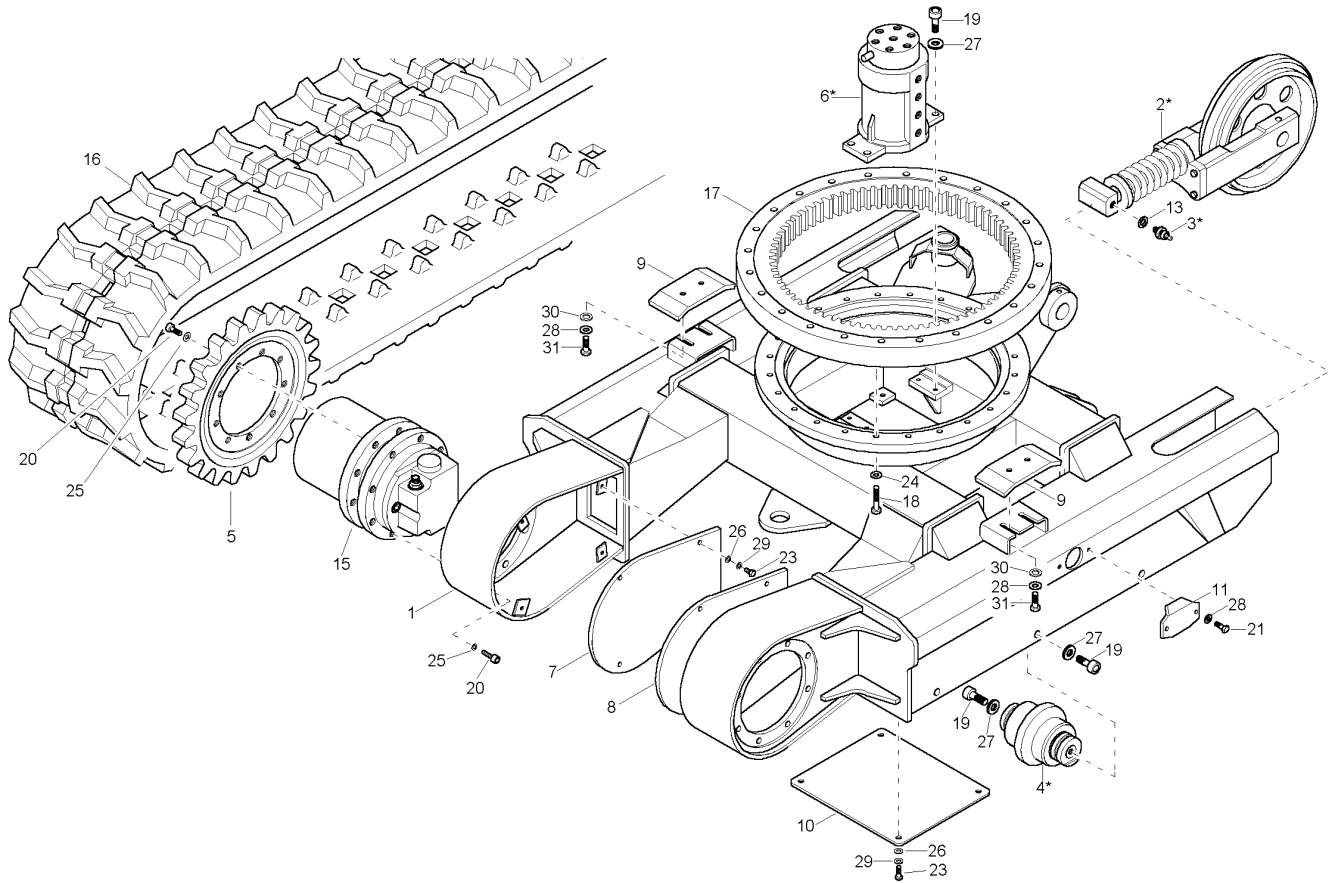
| | |
|--|------------|
| SECTION I: ELECTRICAL SYSTEM | 105 |
| ELECTRICAL SYSTEM | 106 |
| MODELS 142-152 — ELECTRICAL INSTALLATION 1 | 106 |
| MODELS 142-152 — ELECTRICAL INSTALLATION 2 | 107 |
| MODELS 142-152 — BATTERY INSTALLATION | 108 |
| MODELS 142-152 — CONTROL BOARD | 109 |
| MODELS 142-152 — RELAY BOX | 110 |
| MODELS 142-152 — HEADLIGHTS | 111 |
| MODELS 142-152 — HORN | 112 |
| SECTION J: TOOLS | 113 |
| TOOLS | 114 |
| MODELS 142-152 — TOOLS | 114 |
| SECTION K: DECALS | 115 |
| DECALS | 116 |
| MODEL 142 — DECALS | 116 |
| MODEL 152 — DECALS | 117 |

SECTION A: UNDERCARRIAGE

UNDERCARRIAGE 6
MODEL 142 — UNDERCARRIAGE 6
MODEL 152 — UNDERCARRIAGE 7
MODELS 142-152 — TRACK TENSION..... 8
MODELS 142-152 — TRACK ROLLER..... 9
MODELS 142-152 — TRACK ROLLER..... 10

SECTION A: UNDERCARRIAGE

MODELS 142-152 MINI-EXCAVATOR UNDERCARRIAGE MODEL 142 — UNDERCARRIAGE

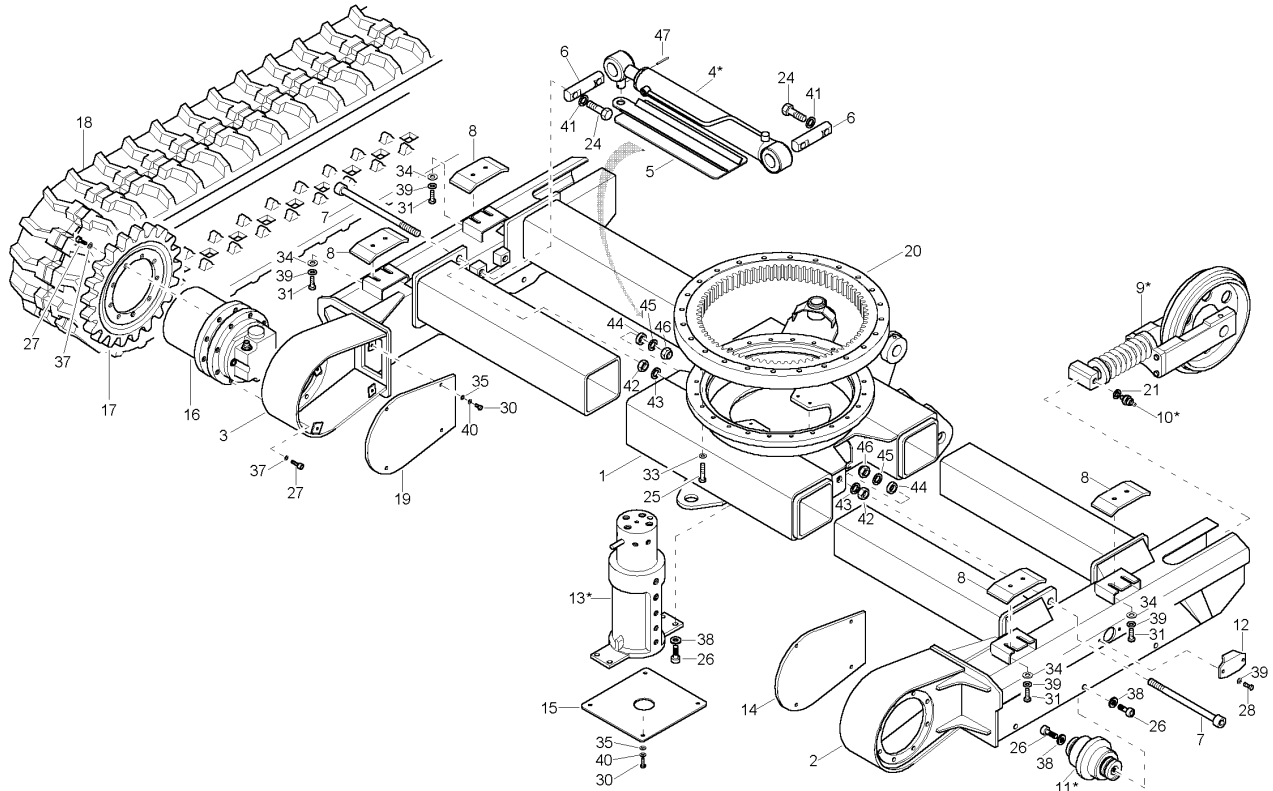


ET1420100

* Reference numbers marked with an asterisk (*) indicate that the individual parts of the assembly are listed later in this section. Refer to the Table of Contents for locations of specific assemblies.

| Ref. No. | Part No. | Description | Qty. Req. | Ref. No. | Part No. | Description | Qty. Req. |
|----------|----------|------------------------|-----------|----------|----------|---------------------------------|-----------|
| 1 | 161830 | UNDERCARRIAGE | 1 | 17 | 161724 | TURNTABLE | 1 |
| 2 | 160516 | TRACK TENSION | 2 | 18 | 651408 | CS M12-1.7 X 40 C 10.9 ZO | 24 |
| 3 | 160638 | NON RETURN VALVE | 2 | 19 | 162032 | SCREW | 16 |
| 4 | 160517 | ROLLER | 6 | 20 | 162022 | SCREW | 34 |
| 5 | 160519 | SPROCKET | 2 | 21 | 656090 | CS M10-1.5 X 16 C 8.8 ZO | 34 |
| 6 | 161865 | SWIVEL JOINT | 1 | 23 | 656001 | CS M8-1.2 X 20 C 8.8 ZO | 12 |
| 7 | 161917 | COVER | 1 | 24 | 161643 | WASHER/ROUND HI-TENS | 24 |
| 8 | 161916 | COVER | 1 | 25 | 161623 | LW SPRING B10 DIN7981 | 34 |
| 9 | 161918 | PLATE | 2 | 26 | 161667 | WASHER/GR A 8.4 ZO | 12 |
| 10 | 161825 | COVER | 1 | 27 | 161635 | WASHER/NORD-LOCK NL 10 | 16 |
| 11 | 161930 | COVER | 2 | 28 | 161669 | LOCKWASHER S10 | 12 |
| 13 | 160865 | SCREW SEAL | 2 | 29 | 161676 | LOCKWASHER S8 | 12 |
| 15 | 160591 | TRAVELING GEAR | 2 | 30 | 161640 | WASHER/GR A 10.5 ZO | 4 |
| 16 | 160524 | RUBBER TRACK | 2 | 31 | 651391 | CS M10-1.5 X 20 C 8.8 ZO | 4 |

MODELS 142-152 MINI-EXCAVATOR UNDERCARRIAGE MODEL 152 — UNDERCARRIAGE

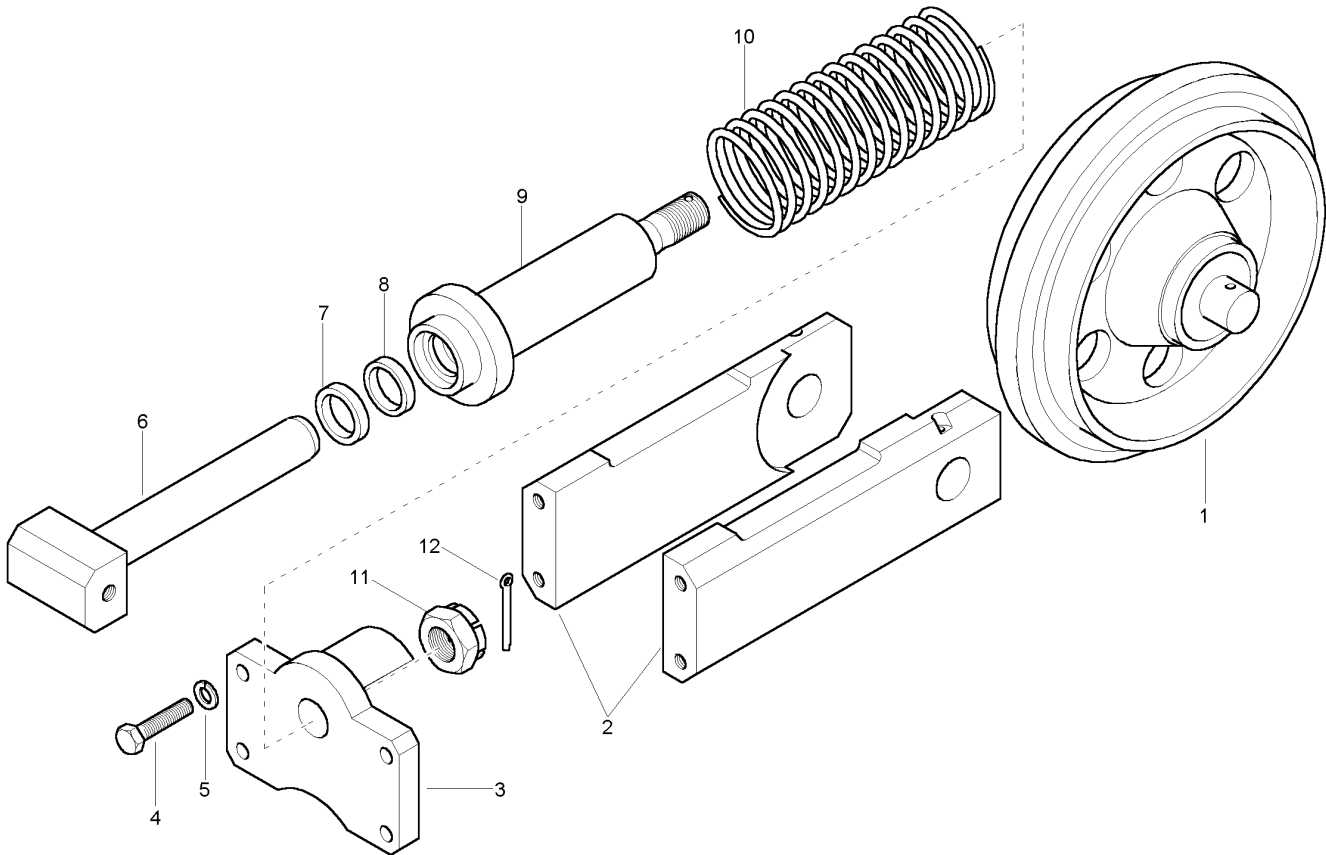


ET1520100

* Reference numbers marked with an asterisk (*) indicate that the individual parts of the assembly are listed later in this section. Refer to the Table of Contents for locations of specific assemblies.

| Ref. No. | Part No. | Description | Qty. Req. | Ref. No. | Part No. | Description | Qty. Req. |
|----------|----------|---------------------------|-----------|----------|----------|-----------------------------------|-----------|
| 1 | 161909 | BRACKET | 1 | 25 | 651408 | CS M12-1.7 X 40 C 10.9 ZO | 24 |
| 2 | 161907 | FRAME | 1 | 26 | 651474 | SHCS HS M10-1.2 X 25 10.9 ZO D912 | 16 |
| 3 | 161908 | FRAME | 1 | 27 | 162022 | SCREW | 34 |
| 4 | 161912 | TELESCOPIC CYLINDER | 1 | 28 | 656090 | CS M10-1.5 X 16 C 8.8 ZO | 34 |
| 5 | 160616 | PROTECTION | 1 | 30 | 656001 | CS M8-1.2 X 20 C 8.8 ZO | 12 |
| 6 | 160622 | PIN | 2 | 31 | 651391 | CS M10-1.5 X 20 C 8.8 ZO | 8 |
| 7 | 161399 | SCREW | 2 | 33 | 161643 | WASHER/ROUND HI-TENS DIN6916 | 24 |
| 8 | 161918 | PLATE | 4 | 34 | 161640 | WASHER/GR A 10.5 ZO | 8 |
| 9 | 160516 | TRACK TENSION | 2 | 35 | 161667 | WASHER/GR A 8.4 ZO | 12 |
| 10 | 160638 | NON RETURN VALVE | 2 | 37 | 161623 | LW SPRING B10 DIN7981 | 34 |
| 11 | 160517 | ROLLER | 6 | 38 | 161635 | WASHER/NORD-LOCK NL 10 STUCK | 16 |
| 12 | 161930 | COVER | 2 | 39 | 161669 | LOCKWASHER S10 | 12 |
| 13 | 161920 | SWIVEL JOINT | 1 | 40 | 161676 | LOCKWASHER S8 | 12 |
| 14 | 161917 | COVER | 1 | 41 | 161671 | LOCKWASHER S14 | 4 |
| 15 | 161906 | COVER | 1 | 42 | 656052 | HN M16-2.0 ZO | 2 |
| 16 | 160591 | TRAVELING GEAR | 2 | 43 | 161672 | LOCKWASHER S16 | 2 |
| 17 | 160519 | SPROCKET | 2 | 44 | 161915 | TUBE | 2 |
| 18 | 160524 | RUBBER TRACK | 2 | 45 | 161649 | WASHER/GR A 18 ZO DIN7989 | 2 |
| 19 | 161916 | COVER | 1 | 46 | 651451 | HLN INS M16-2.0 ZO | 2 |
| 20 | 161724 | TURNTABLE | 1 | 47 | 651468 | PIN/SPRING M8 X 70 D1481 | 1 |
| 21 | 160865 | SCREW SEAL | 2 | 50 | 161910 | UNDERCARRIAGE | 1 |
| 24 | 651412 | CS M14-2.0 X 50 C 10.9 ZO | 4 | | | | |

**MODELS 142-152 MINI-EXCAVATOR
UNDERCARRIAGE
MODELS 142-152 — TRACK TENSION**



ET1420110

* Reference numbers marked with an asterisk (*) indicate that the individual parts of the assembly are listed later in this section. Refer to the Table of Contents for locations of specific assemblies.

| Ref. No. | Part No. | Description | Qty. Req. | Ref. No. | Part No. | Description | Qty. Req. |
|----------|----------|--------------------------------|-----------|----------|----------|-----------------|-----------|
| 1 | 160635 | ROLLER..... | 1 | 7 | 161564 | SEAL..... | 1 |
| 2 | 160518 | GUIDANCE..... | 2 | 8 | 161561 | SEAL..... | 1 |
| 3 | 161829 | BRACKET..... | 1 | 9 | 160521 | CYLINDER..... | 1 |
| 4 | 651398 | CS M10-1.5 X 35 C 10.9 ZO..... | 4 | 10 | 160523 | SPRING..... | 1 |
| 5 | 161623 | LW SPRING B10 DIN7981..... | 4 | 11 | 162049 | NUT..... | 1 |
| 6 | 160520 | PISTON..... | 1 | 12 | 162053 | COTTER PIN..... | 1 |

Thanks for your reading.

Please click here to download complete manual instantly.

And can also choose other manuals.

Feel free --->write to me with any questions.

Our service email:

manuals007@hotmail.com