

1202

Compact Excavator

Beginning Serial Number: AB00473

GEHL®

Form No.
918044

Revision D
09/06



PARTS MANUAL

When ordering service parts, specify the correct part number, full description, quantity required, the unit model number and serial number. For your safety and continued proper operation, use only genuine GEHL service parts.

The model and serial number for this unit are on a tag located on a panel on the front of the cabin.

"Right" and "left" are determined from a position sitting on the seat and facing forward. From this position, the cab is on the "left" and the hydraulic valve compartment is on the "right."

GEHL Company reserves the right to make changes or improvements in the design or construction of any part of the unit without incurring the obligation to install such changes on any previously delivered units.

Refer to the abbreviations table located on this page for the various fastener descriptions. Standard attaching hardware torque values are also provided on the inside back cover. Metric torque values shown in the illustrations are in Newton-meters and can be converted to foot-pounds by multiplying by 0.738.

In the exploded view parts list, additional information may follow the Reference Number.

Serial number breaks are indicated as follows:

(SN > XXXXX) - indicates serial numbers up to and including XXXXX.

(SN YYYYYY >) - indicates serial numbers YYYYYY and after.

Unless otherwise specified, all cap screws and bolts are Grade 8.8, cadmium or zinc plated.

NOTE: *The following abbreviations may be used herein:*

ASSD..... - Assembled
ASSY..... - Assembly
CB..... - Carriage Bolt
CP..... - Cotter Pin
CS..... - Cap Screw (Hexagon Head)
FHCS..... - Flat Head Cap Screw
GR..... - Grade
HB..... - Hex Bolt
HLN..... - Hex Lock Nut
HN..... - Hex Nut
HP..... - High Pressure
INS..... - Insert
LN..... - Lock Nut
LT..... - Left
LW..... - Lock Washer
M..... - Metric
MM/mm..... - Millimeter
RT..... - Right
SHCS..... - Socket Head Cap Screw
SLTD..... - Slotted
SN..... - Serial Number or Slotted Nut

TABLE OF CONTENTS

Introduction.....	i	Radiator.....	56
Table of Contents.....	1	Oil Cooler Installation	57
Decal Locations	4	Oil Cooler Installation	58
Undercarriage, Steel Track	11	Oil Cooler Installation	59
Undercarriage, Rubber Track (Option).....	12	Diesel Engine (Tier 2 Engine)	60
Track Tensioner, Steel Track.....	13	Engine Mounts (Tier 2 Engine)	61
Track Tensioner, Rubber Track	14	Exhaust System (Tier 2 Engine)	62
Top Roller	15	Engine Wire Harness (Tier 2 Engine).....	63
Bottom Roller, Steel Track	16	Fuel Injection System (Tier 1 Engine).....	64
Bottom Roller, Rubber Track	17	Cooling System (Tier 1 Engine)	66
Steel Track	18	Engine Mounts (Tier 1 Engine)	67
Dozer Blade	19	Exhaust System (Tier 1 Engine)	68
Chassis Cover	20	Engine Wire Harness (Tier 1 Engine).....	69
Lubrication.....	21	Seal Kit (Tier 1 Engine).....	70
Isolation Mat 1	22	Starter & Alternator (Tier 1 Engine).....	71
Isolation Mat 2	23	Oil Supply (Tier 1 Engine)	72
Counterweight.....	24	Hydraulic Oil Tank	73
Counterweight (Option).....	25	Hydraulic Oil Tank	74
Valve Cover	26	Fuel Tank Installation	75
Hydraulic Tank Cover	27	Air Conditioning.....	76
Boom.....	28	Air Conditioning.....	77
Dipper Arm	29	Air Conditioning Installation	78
Dipper Arm Long.....	30	Air Conditioning Installation	79
Connecting Link	31	Air Conditioning Installation	80
Cabin Frame 1A.....	32	Relay Plate	81
Cabin Frame 1	33	Relay Plate	82
Cabin Frame 2.....	34	Chassis	83
Cabin Frame 3.....	35	Chassis	84
Cab Harnesses.....	36	Turntable Drive Unit Installation.....	85
Windshield.....	37	Turntable Drive Unit Installation.....	86
Cabin Windows.....	38	Rear Wall	87
Cabin Windows.....	39	Rear Wall	88
Side Window.....	40	Side Wall Cover.....	89
Cabin Door 1A.....	41	Side Wall Cover.....	90
Cabin Door 1	42	Engine Hood	91
Covering.....	43	Engine Hood	92
Covering.....	44	Engine Hood	93
Rotating Beacon/Sun Visor (Option).....	45	Armrest - Wire Harness Right	94
Fuel Tank	46	Armrest - Wire Harness Right	95
Fuel Tank	47	Armrest - Wire Harness Right	96
Blower.....	48	Armrest - Wire Harness Left	97
Heater.....	49	Armrest - Wire Harness Left (Option).....	98
Heater.....	50	Hydraulic Pump Drive	99
Throttle Lever	51	Hydraulic Pump 1	100
Throttle Lever	52	Hydraulic Pump 2	101
Air Intake System	53	Hydraulic Pump 2	102
Air Intake System	54	Operator's Seat	103
Radiator.....	55	Operator's Seat	105

TABLE OF CONTENTS

Air Conditioning Installation (Option)	106
Drive Motor	107
Swivel Joint.....	108
Turntable Drive Unit.....	109
Turntable Drive Unit.....	110
Control Valve.....	111
Control Valve 1.....	112
Control Valve 2.....	113
Control Valve 3.....	114
Control Valve for Auxiliary Hydraulics ..	115
Dozer Blade Valve.....	116
Boom Cylinder.....	117
Double Control Block.....	118
Pilot Oil Supply Unit	119
Dipper Arm Cylinder	120
Stop Valve.....	121
Bucket Cylinder	122
Reversing Valve.....	123
Dozer Blade Cylinder	124
Boom Offset Cylinder.....	125
Boom Offset Cylinder.....	126
Boom Offset Cylinder Installation.....	127
Manifold Block Large.....	128
Manifold Block Small (Option).....	129
Joysticks.....	130
Joysticks.....	131
Joysticks (ISO/SAE Valve Option)	132
Hydraulic Pump Installation	133
Drive Motors Installation.....	134
ISO/SAE Valve.....	135
ISO/SAE Valve.....	136
Pilot Valve Travel.....	137
Control Valve Drain Line	138
Dozer Blade Cylinder Installation	139
Auxiliary Function Installation	140
Joysticks Installation.....	141
Pilot Operated Check Valves Installation	142
Boom Installation.....	143
Boom Cylinder Installation.....	144
Dipper Arm Installation	145
Battery Installation.....	146
Chassis Wire Harness	147
Headlight Chassis	148
Headlight.....	149
Cab Work Light (Option)	150
Work Light.....	151
Tool Kit.....	152
Numerical Index	155

TABLE OF CONTENTS

DECAL LOCATIONS

GENERAL INFORMATION

Decal location information is provided to assist in the proper selection and application of new decals, in the event the original decals become damaged or the machine is repainted. Refer to the listing for the illustration reference number, part number, description and quantity of each decal provided in the kit. Refer to the appropriate illustrations for replacement locations.

To ensure proper selection of the correct replacement decals, compare all of the various closeup location drawings to your machine before starting to refinish the unit. Then circle each decal shown (applicable to your machine) while checking off its part number in the listing. After you have verified all the decals needed for replacement, place any extra unnecessary decals aside for disposal.

NOTE: Refer to the *SAFETY* chapter of the *Operator's Manual* for the specific information provided on the safety decals furnished in the decal kit(s).

NEW DECAL APPLICATION

Surfaces **MUST** be free from dirt, dust, grease and other foreign material before applying the new decal. To apply, remove the smaller portion of the decal backing paper and apply this part of the exposed adhesive backing to the clean surface while maintaining proper position and alignment. Peel the other portion of the backing paper off slowly while applying hand pressure to smooth out the decal surface.



CAUTION

ALWAYS follow safety precautions on decals. Replace the decals if they are damaged, or if the unit is repainted. If repainting, **BE SURE** all applicable decals are affixed to your unit.

PAINT NOTICE

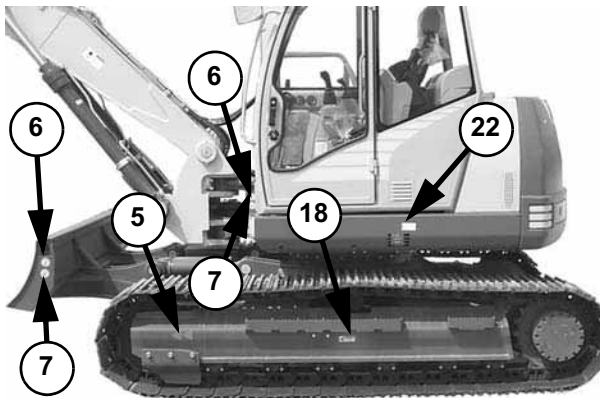
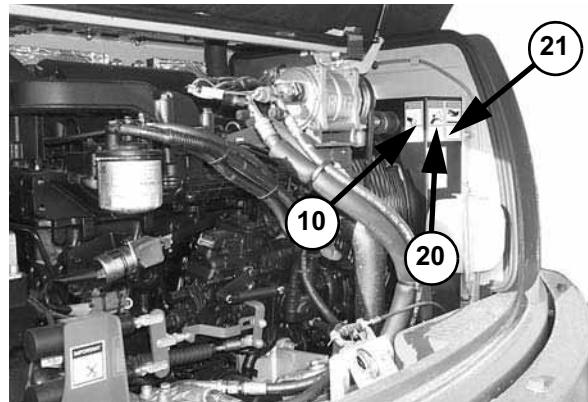
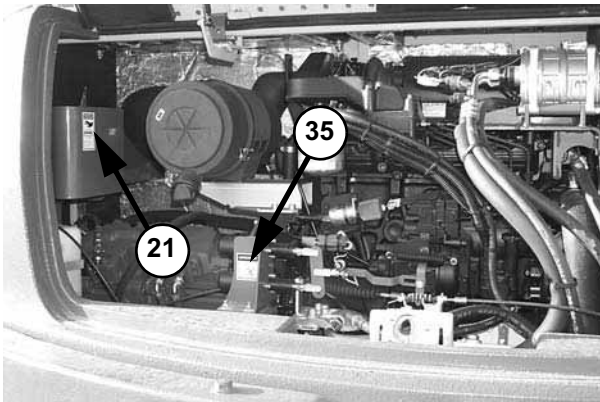
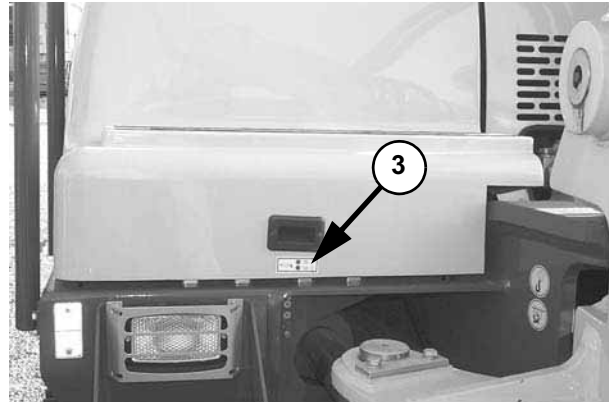
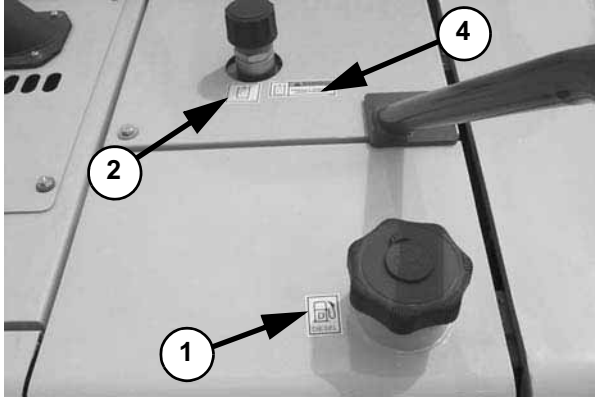
Use this list to order paint for refinishing:

167788	4 qts. Construction Yellow (GEHL)
167780	4 qts. Light Gray (GEHL)
167774	4 qts. Dark Gray (GEHL)
167789	6 (12.8 oz. Spray Cans) Yellow (GEHL)
167775	6 (12.8 oz. Spray Cans) Dark Gray (GEHL)
167781	6 (12.8 oz. Spray Cans) Light Gray (GEHL)

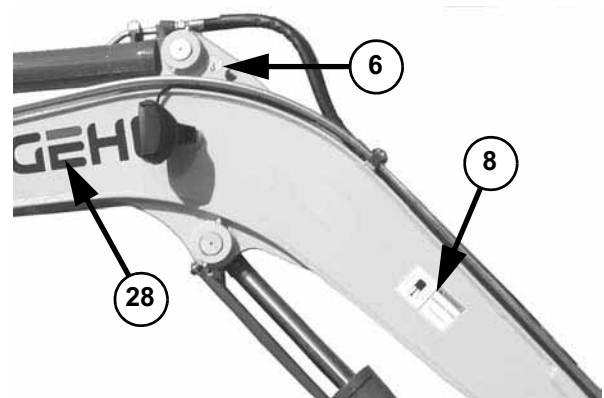
The decal kit for the model 1202 Compact Excavator is listed below:

Ref. No.	Part No.	Description & Quantity
	164652	Decal Kit - 1202
1	161965	Diesel Fuel
2	161966	Hydraulic Oil
3	161967	Lubrication
4	161969	WARNING - Hydraulic Reservoir
5	161970	Arrow (2 places)
6	161981	Lift Point (6 places)
7	161982	Tiedown Point (4 places)
8	161985	WARNING - Keep Away (2 places)
9	161986	WARNING - Read Manual
10	161987	WARNING - Rotating Fan (2 places)
11	162449	Dozer Blade - Up and Down
12	162450	Travel - Left
13	162451	Travel - Right
14	179689	Right Joystick Control (SN > AB01792)
	179725	Right Joystick Control (SN AB01793 >)
15	162453	Left Joystick Control
16	162832	Hydraulics Compartment Latch (2 places)
17	163973	WARNING - Mandatory Shutdown
18	163975	WARNING - Avoid Injury (2 places)
19	163976	WARNING - Avoid Injury
20	163977	WARNING - Entanglement Hazard
21	163978	WARNING - Hot Surface (2 places)
22	163979	Control Pattern
23	164862	Left Graphic (SN > AB00988)
	179700	Left Graphic (SN AB00989 >)
24	162825	Right Graphic
25	164853	Engine Compartment Latch
26	164854	WARNING - Avoid Injury
27	163974	Manual Throttle
28	184069	GEHL (2 places)
29	160893	1202 (2 places)
30	184307	GEHL
31	183935	GEHL
32	179683	Lifting Capacity
33	179707	Protective Structure
34	179718	Heater/Air Conditioner
35	164858	IMPORTANT - Pressure Wash
36	179685	Flow Control
37	163980	Joystick Throttle

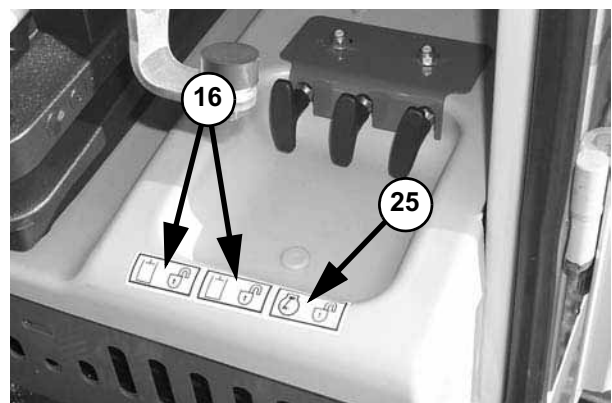
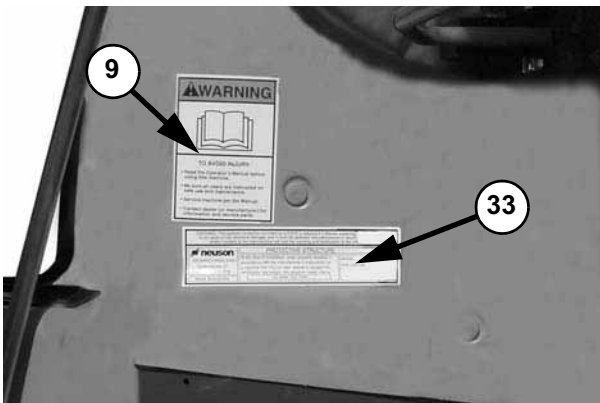
DECAL LOCATIONS



Both Sides (except 22)



Both Sides



DECAL LOCATIONS

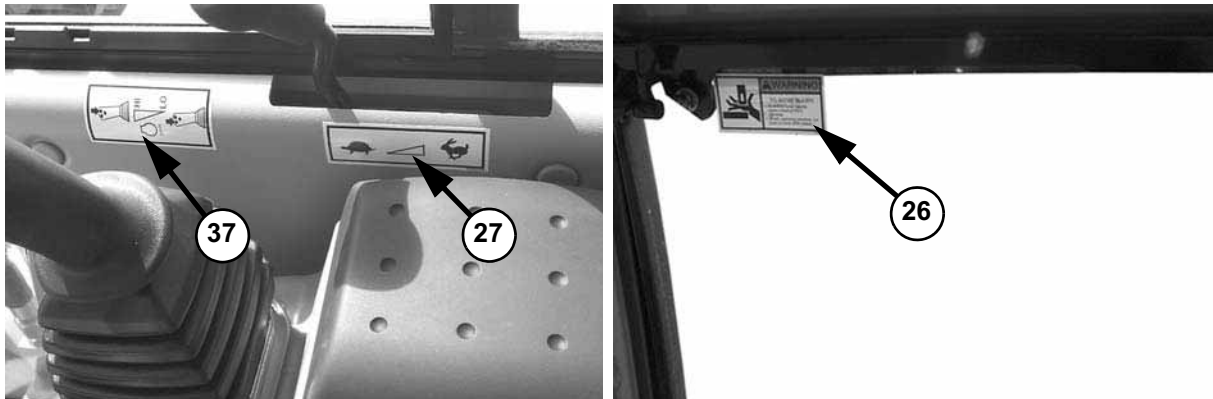
NOTE: *The following is a duplicate listing of the decals from page 4. It is provided for convenience when selecting decals from the appropriate illustrations.*

The decal kit for the model 1202 Compact Excavator is listed below:

Ref. No.	Part No.	Description & Quantity
	164652	Decal Kit - 1202
1	161965	Diesel Fuel
2	161966	Hydraulic Oil
3	161967	Lubrication
4	161969	WARNING - Hydraulic Reservoir
5	161970	Arrow (2 places)
6	161981	Lift Point (6 places)
7	161982	Tiedown Point (4 places)
8	161985	WARNING - Keep Away (2 places)
9	161986	WARNING - Read Manual
10	161987	WARNING - Rotating Fan (2 places)
11	162449	Dozer Blade - Up and Down
12	162450	Travel - Left
13	162451	Travel - Right
14	179689	Right Joystick Control (SN > AB01792)
	179725	Right Joystick Control (SN AB01793 >)

Ref. No.	Part No.	Description & Quantity
15	162453	Left Joystick Control
16	162832	Hydraulics Compartment Latch (2 places)
17	163973	WARNING - Mandatory Shutdown
18	163975	WARNING - Avoid Injury (2 places)
19	163976	WARNING - Avoid Injury
20	163977	WARNING - Entanglement Hazard
21	163978	WARNING - Hot Surface (2 places)
22	163979	Control Pattern
23	164862	Left Graphic (SN > AB00988)
	179700	Left Graphic (SN AB00989 >)
24	162825	Right Graphic
25	164853	Engine Compartment Latch
26	164854	WARNING - Avoid Injury
27	163974	Manual Throttle
28	184069	GEHL (2 places)
29	160893	1202 (2 places)
30	184307	GEHL
31	183935	GEHL
32	179683	Lifting Capacity
33	179707	Protective Structure
34	179718	Heater/Air Conditioner
35	164858	IMPORTANT - Pressure Wash
36	179685	Flow Control
37	163980	Joystick Throttle

DECAL LOCATIONS



Overhead Decals - positioning may vary by model and cabin style

HUBKRAFT/LIFTING CAPACITY/FORCE DE LEVAGE ISO 10567

		6,0m		5,0m		4,0m		3,0m			
B	A										
	6,0m		3110*	2220			2990*	1685	3100*	2480	
4,5m		2900*	1330			2960*	1685	3000*	2445		
3,0m		2935*	1050	2990*	1185	3280*	1595	3810*	2260	5300*	3670
1,5m		3040*	965	3280*	1110	3945*	1445	5170*	2040	8170*	3015
0,0m		3170*	960	3430*	1040	4345*	1150	5570*	1850	8920*	2850
-1,5m		3300*	1130			4010*	1130	5430*	1820	7645*	2925
-3,0m		3215*	1835					3430*	1945		

1.

2.

WARNING

MANDATORY SAFETY SHUTDOWN PROCEDURE:

1. Lower all equipment to ground.
2. Reduce throttle; shut off engine.
3. Lock out controls before exiting.
4. Remove key and take it with you.

1.

2.

WARNING

TO AVOID INJURY:

1. Load and transport unit properly. Inspect job-site for hazards.
2. Operate only from operator's seat. Fasten seatbelt.
3. Keep people out of DANGER ZONE.
4. Operate within stability limit of machine. DO NOT OVERLOAD. Use only approved attachments.

14

12

TRAVEL LEFT
KETTE LINKS

FORWARD
VORWÄRTS

REVERSE
RÜCKWÄRTS

13

TRAVEL RIGHT
KETTE RECHTS

FORWARD
VORWÄRTS

REVERSE
RÜCKWÄRTS

15

11

DOZER BLADE DOWN
PLANIERSCHILD SENKEN

DOZER BLADE UP
PLANIERSCHILD HEBEN

Thanks for your reading.

Please click here to download complete manual instantly.

And can also choose other manuals.

Feel free --->write to me with any questions.

Our service email:

manuals007@hotmail.com