

Form No.  
908157  
Revision C

# 1085/1285

## Forage Harvester



# PARTS MANUAL

**GEHL® AGRICULTURE**

## Introduction

When ordering service parts, specify the correct part number, full description, quantity required, the unit model number and serial number. For your safety and continued proper operation, use only genuine GEHL service parts.

The model and serial numbers for this unit are on a plate located on the right side of the main frame, underneath the feed roll housing.

“Right” and “left” are determined from a position standing behind the unit and facing the direction of travel. From this position the bevel gearbox and main drive shaft are on the “left” side.

GEHL Company reserves the right to make changes or improvements in the design or construction of any part of the unit without incurring the obligation to install such changes on any previously delivered units.

**NOTE:** *On original tire replacement, Company policy prohibits the sale of replacement tires for all GEHL machinery. Replacement wheel sets are available and tire size information is called out with the wheel sets to facilitate replacement tire selection. ALL REPLACEMENT TIRES MUST BE PURCHASED LOCALLY.*

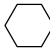
Refer to the abbreviations table located on this page for the various fastener descriptions. Standard attaching hardware torque values are provided on the inside back cover.

In the exploded view parts list, Reference Numbers may have additional information following the Reference Number. A tear drop symbol will indicate an application of a “wet” product, such as oil, and the number inside the tear drop will correspond to the description in the parts list.

A number inside a hexagon will be the torque value required, on the associated Reference Number, in foot-pounds. Items shown in the parts list that do not have Reference Numbers are shown for reference purposes only and are NOT available for purchase.

Unless otherwise specified, all fasteners are zinc plated; all cap screws and bolts are Grade 5; hexagon nuts for Grade 5 cap screws and bolts are Grade B; hexagon nuts for other cap screws and bolts are Grade A.

**NOTE:** *The following abbreviations may be used herein:*

AR	- As Required
ASSD	- Assembled
ASSY	- Assembly
CB	- Carriage Bolt
CCW	- Counterclockwise
CP	- Cotter Pin
CS	- Cap Screw (Hexagon Head)
CTR	- Center
CW	- Clockwise
DEG	- Degree
DIA	- Diameter
FCS	- Flanged Cap Screw
FHCS	- Flat Head Cap Screw
FHMS	- Flat Head Machine Screw
FL	- Flanged
FLN	- Flanged Lock Nut (Hexagon)
FLS	- Flanged Lock Screw (Hexagon)
FW	- Flat Washer
GA	- Gauge
GR	- Grade
HD	- Hard or Head
HN	- Hex Nut
HWMS	- Hex Washer Machine Screw
INCL	- Includes
JT	- Joint
LG	- Large
LN	- Lock Nut
LT	- Left
LW	- Lock Washer
M	- Metric
MM/mm	- Millimeter
NF	- National Fine
NS	- Not Serviced
PB	- Plow Bolt
PTO	- Power Take Off
RHMS	- Round Head Machine Screw
RPM	- Revolutions Per Minute
RT	- Right
SERR	- Serrated
SHCS	- Socket Head Cap Screw
SHSS	- Socket Head Set Screw
SN	- Serial Number or Slotted Nut
SQ	- Square
SQHSS	- Square Head Set Screw
T	- Tooth or Teeth
TFS	- Thread Forming Screw
THMS	- Truss Head Machine Screw
THRD	- Thread
WLDMT	- Weldment
#	- Number
	- Torque Required in foot-pounds
	- Indicates a Fluid Application

# TABLE OF CONTENTS

Introduction .....	Inside Front Cover
Table of Contents .....	1
Decal Locations .....	2-7
Frame & Attachment Lift .....	8-9
Driveline .....	10-11
Cylinder & Cutting Mechanism .....	12-17
Knife Sharpener .....	18-19
Feed Roll Scraper & Cylinder Pan .....	20
Stalk Guides .....	21
Electric Clutch & Drive .....	22-23
Attachment Drive .....	24-25
Feed Roll Drive Frame .....	26-27
Feed Roll Drives .....	28-33
Roll Arms .....	34-35
Feed Rolls .....	36-41
Stabilizer (Feed Roll) .....	42-43
Blower, Drive & Fan Assembly .....	44-49
Auger & Drive .....	50-53
Spout & Cap .....	54-57
Hydraulics .....	58-59
Electrical .....	60-65
Metal Stop Module, Amplifier Box, Control Box & 2nd Tractor Wiring Kit .....	66-67
Shields & Covers .....	68-77
Shifter Transmission .....	78-79
Bevel Transmission .....	80-81
Universal Drives .....	82-84
Lower Front Detector Roll .....	85
Hitchjack .....	86
Optional Single Axles & Wheels .....	87-88
Optional Tandem Axles & Wheels .....	89
Accessories .....	90-100
Horizontal Spout Extensions (3-1/2 & 5-1/2 Ft.) .....	90
Spout Tripod Kit .....	91
Vertical Extensions (1-Ft., 2-Ft. & 6") .....	92
4" Drawbar Extension .....	93
Safety Chain & Burnishing Tool .....	94
Lift Spring Kit .....	95
Chain Oiler Kit .....	96
Lubeminder System & Brush Kit .....	97
CB Remote Hydraulic Outlet Kit .....	98
Power Supply Harness, Long Tractor Harness & Second Tractor Wiring Kit .....	99
Spout Light Kit .....	100
Alphabetical Index .....	101
Numerical Index .....	102-113
Notes .....	114-115
Hydraulic Fitting Torque Data .....	116
Standard Hardware Torque specifications .....	Inside Back Cover

# DECAL LOCATIONS

## GENERAL INFORMATION

Decal location information is provided to assist in the proper selection and application of new decals, in the event the original decals become damaged or the machine is repainted. Refer to the listing for the illustration reference number, part number, description and quantity of each decal provided in the kit. Refer to the appropriate illustrations for replacement locations.

To ensure proper selection of the correct replacement decals, compare all of the various closeup location drawings to your machine before starting to refinish the unit. Then circle each shown decal (applicable to your machine) while checking off its part number in the listing. After you have verified all the decals needed for replacement, place any extra unnecessary decals aside for disposal.

**NOTE:** Refer to the *SAFETY Chapter of the Operator's Manual for the specific information provided on all of the various safety decals furnished in the decal kit(s).*

## NEW DECAL APPLICATION

Surfaces **MUST** be free from dirt, dust, grease and other foreign material before applying the new decal. To apply, remove the smaller portion of the decal backing paper and apply this part of the exposed adhesive backing to the clean surface while maintaining proper position and alignment. Peel the other portion of the backing paper off slowly while applying hand pressure to smooth out the decal surface.



## CAUTION

**ALWAYS** follow safety precautions on decals. Replace the decals if they are damaged, or if the unit is repainted. If repainting, **BE SURE** that all applicable decals are affixed to your unit.

### PAINT NOTICE

Use this list to order paint for refinishing:

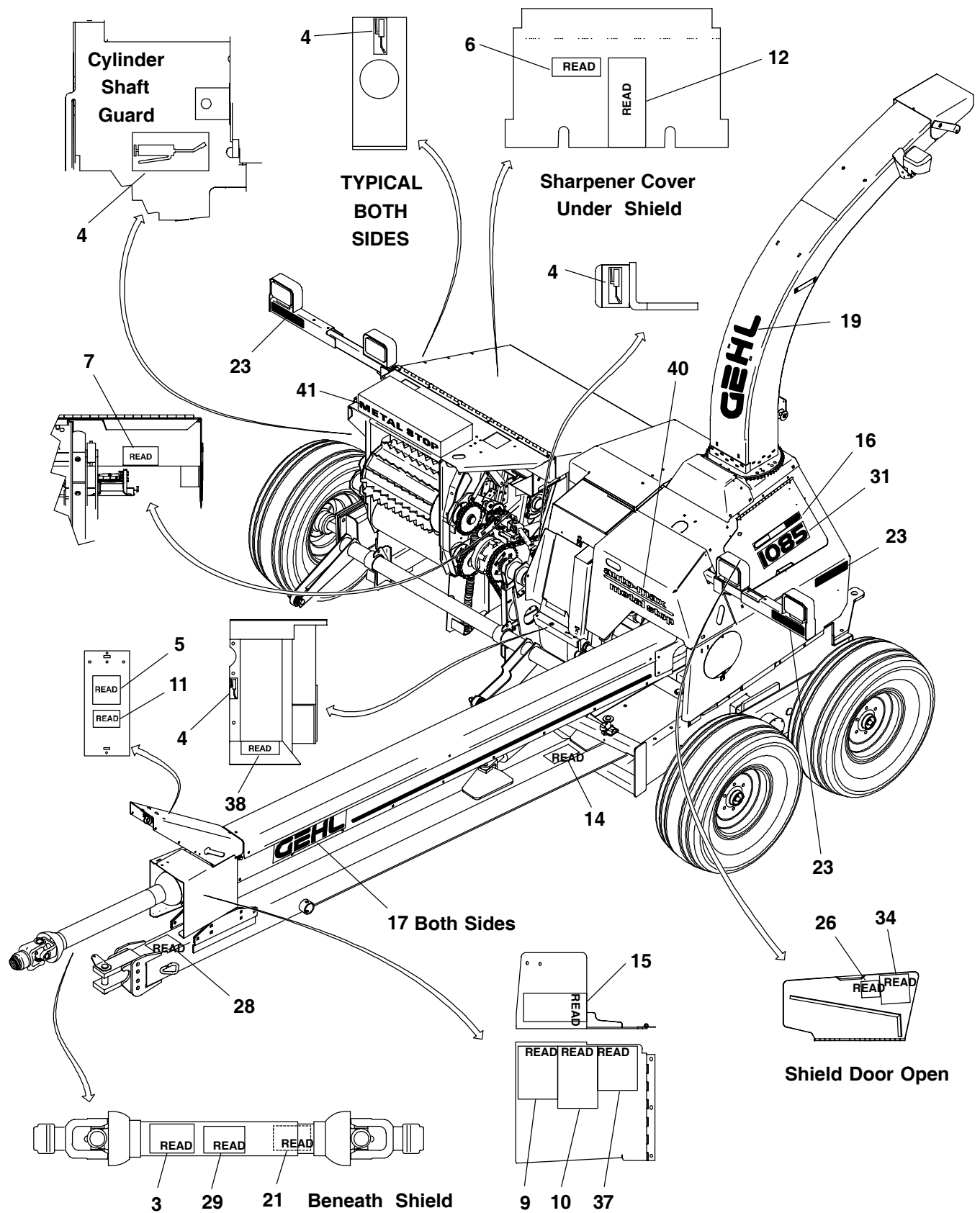
906315	One Gal. AG Red
902872	One Qt. Light Grey
906316	6 (12 oz. Spray Cans) AG Red
902874	6 (12 oz. Spray Cans) Light Grey

The decal kit part number for the 1085 is 155734, and for the 1285 is 155737. The kit includes the following:

Ref. No.	Part No.	Description & Quantity
1	080739	Fuse (Auto-Max Units, Early Models Only)
2	080745	Terminal (Auto-Max Units, Early Models Only)
3	091444	DANGER - Rotating Driveline
4	093020	Lubrication Symbol (9 Places)
5	093202	DANGER - Avoid Electrocutation
6	093209	Place Edge
7	093211	Shearbar Removal & Replacement (1085)
	074490	Shearbar Removal & Replacement (1285)
8	093366	IMPORTANT - Store Manual Here
9	093367	WARNING - Owner's Responsibility & Read Manual
10	093373	WARNING - General Safety
11	093374	WARNING - Towing Implement Without Brakes
12	093378	DANGER - Rotating Components (2 Places)
13	093379	WARNING - Wear Goggles When Using Knife Sharpener
14	093381	WARNING - Use Drawbar Transport Lock
15	093653	WARNING - Rotating Driveline
16	094912	Colorbar 12" (2 Places)
17	094913	GEHL (2 Places)
18	094951	Made in USA
19	122288	GEHL
20	122433	GEHL
21	143007	DANGER - Shield Missing
22	145216	Red Reflector Strip (3 Places)
23	145217	Amber Reflector (4 Places)
24	145218	Orange Marker (3 Places)
25	145234	SMV Marker
26	145316	Length Of Cut Chart
27	145847	Knife Sharpener Instructions
28	153799	1000 RPM
29	154226	CAUTION - Hitchpin alignment
30	154281*	Belt Routing ( <u>Not Shown</u> )
31	158060	1085 (2 Places)
	154185	1285 (2 Places)
32	158168*	Roll Adjustment ( <u>Not Shown</u> )
33	158390	Shearbar Adjustment (1085)
	158391	Shearbar Adjustment (1285)
34	158664	Shearbolt Chart (1085)
	158665	Shearbolt Chart (1285)
35	158749*	Crop Processor ( <u>Not Shown</u> )
36	158778	Lubrication
37	163941	WARNING - To Avoid Injury or Death
38	163957	Decal/Warn Hands Out (3 Places on harvester) (*1 Place on crop processor, <u>not shown</u> )
39	163962	DANGER - Keep Hands Out
40	173972	Auto-Max™/Metal Stop™ (Auto-Max units) For early models use top portion of 173972 for Auto-Max™ and bottom portion for Metal Stop™
41		Metal Stop™ (Auto-Max Units, Early Models Only). See note for 173972.

\* See 1005/1205 Crop Processor manuals for decal locations.

**NOTE:** Order part number 126757 for a 10-ft. roll of replacement striping.



**Thanks for your reading.**

**Please click here to download complete manual instantly.**

**And can also choose other manuals.**

**Feel free --->write to me with any questions.**

**Our service email:**

**manuals007@hotmail.com**