

HL4400 LOADER



SERVICE PARTS MANUAL

Form No.
902580
Replaces
901678

GEHL[®] COMPANY

Mr. Dealer:

When ordering service parts, specify the correct part number, full description, quantity required, the unit model number and serial number.

The model number and serial number should always be given. Numbers for this unit are stamped on a plate located in the compartment to the Rear and Below the Right Load Arm Pivot.

“Right” and “Left” are determined from a position sitting on the Seat and looking forward. From this position, the Foot Throttle is on the Right Side of Console.

GEHL Company reserves the right to make changes or improvements in the design or construction of any part of the unit without incurring the obligation to install such changes on any unit previously delivered.

NOTE: On original Tire replacement, Company policy prohibits the sale of replacement tires for all original GEHL machinery. Replacement Wheel Sets are available and tire size information is called-out with the Wheel Sets to facilitate replacement tire selection. **ALL REPLACEMENT TIRES MUST BE PURCHASED LOCALLY.**

NOTE: Common hardware, such as nuts, cap screws, etc. are listed in the parts list but NOT illustrated. Hardware listed, is for mounting purposes and NOT included when the part is ordered for replacement. For the part numbers of common hardware, refer to the attaching hardware table located inside the back cover.

Standard hardware torques appear in a chart at the end of the manual.

Unless otherwise specified, all Cap Screws or Bolts are Grade 5, cadmium or zinc plated; Hexagon Nuts for Grade 5 Cap Screws or Bolts are Grade B; Hexagon Nuts for other Cap Screws or Bolts are Grade A.

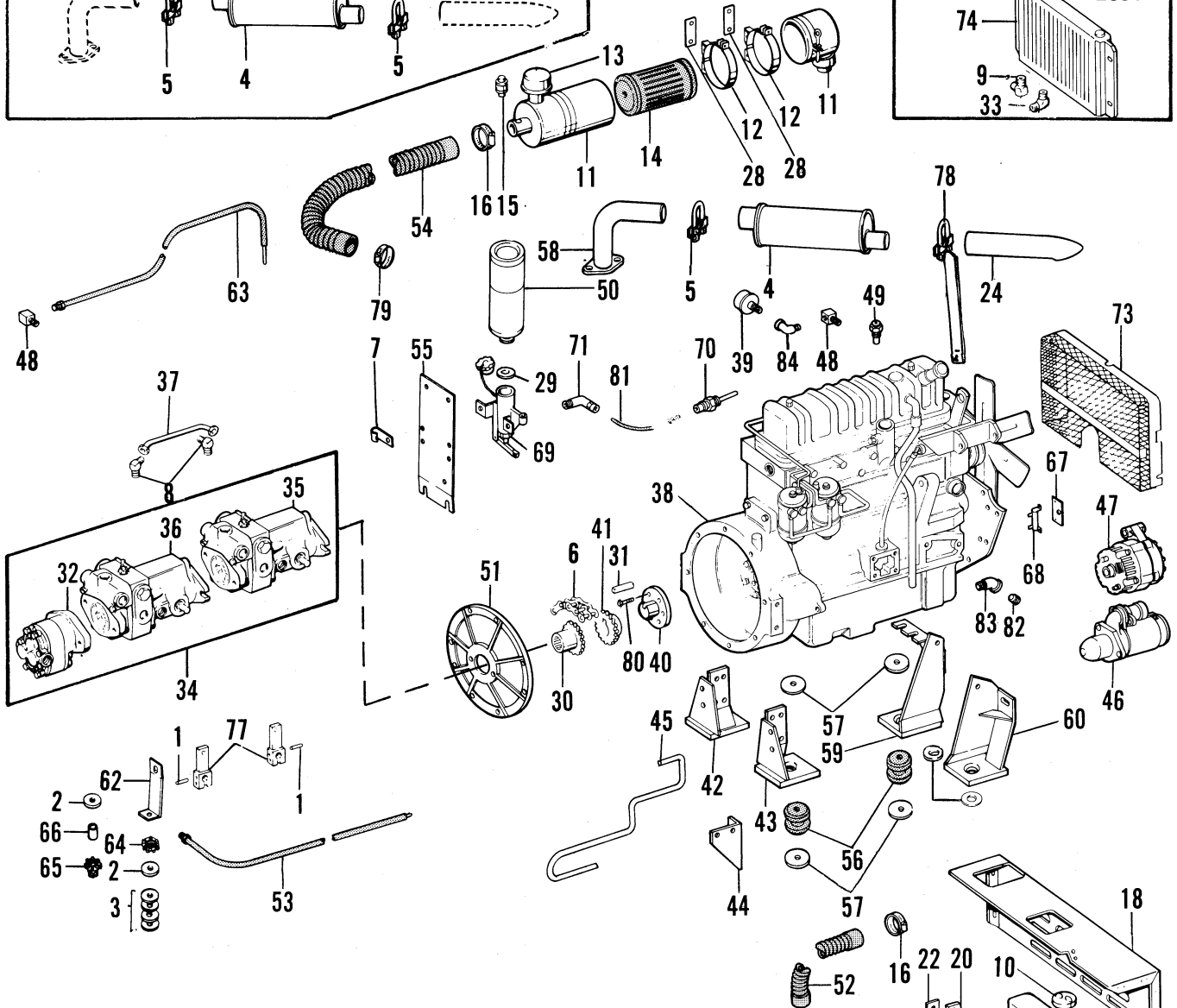
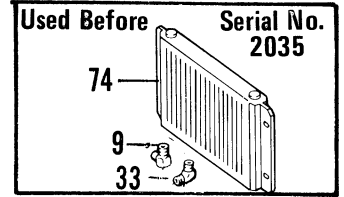
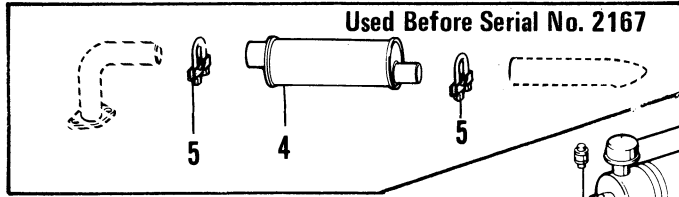
The following abbreviations are used in this manual:

- CB - Carriage Bolt
- HHCS - Hexagon Head Cap Screw
- HWHSTS - Hexagon Washer Head Self-Tapping Screw
- PTHMS - Phillips Truss Head Machine Screw
- RHMS - Round Head Machine Screw
- SHSS - Socket Head Set Screw
- SQHSS - Square Head Set Screw
- LH - Left Hand (Thread)
- NF - National Fine
- RH - Right Hand (Thread)
- SL - Self-locking (Thread)
- DPT - Double Pitch Tooth
- CN - Castellated Nut
- HJN - Hexagon Jam Nut
- HLN - Hexagon Lock Nut
- HMN - Hexagon Machine Nut
- HN - Hexagon Nut
- SN - Slotted Nut
- WN - Wing Nut
- ELW - External (Tooth) Lock Washer
- ILW - Internal (Tooth) Lock Washer
- LW - Lock Washer
- PW - Plain Washer
- NPT - National Pipe Thread
- T - Tooth

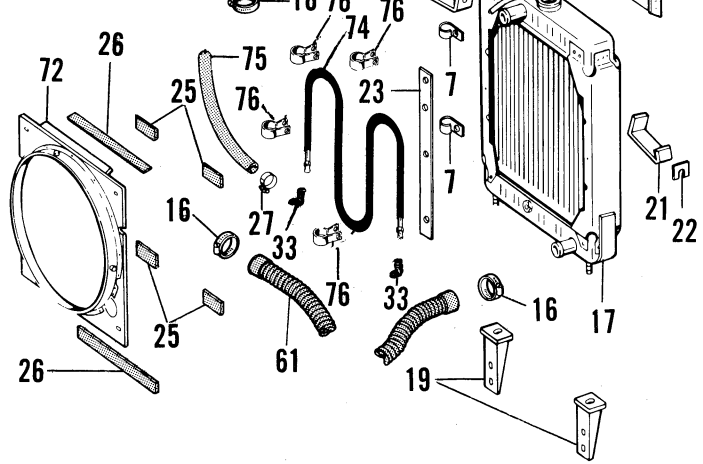
TABLE OF CONTENTS

Page	Page		
Introduction.....	2	Lift & Tilt Valve	38
Engines.....	3-14	Lift Cylinder	39
Perkins	3-5	Tilt Cylinder	39
Wisconsin.....	6-7	Options & Accessories	40-47
Ford - Gas	8-10	Light Kit.....	40
Ford - LPG	11-14	Auxiliary Hydraulic Kit.....	41
Main Frame.....	15-17	Rear Hydraulic Kit.....	42
Console & Controls	18-20	Bucket Tooth.....	43
Load Arm	21	Cement Bucket	43
Axle & Drive	22-24	Drawbar.....	43
Hydraulic Systems	25-31	Manure Fork	43
Wisconsin & Ford Units Before Serial #2167 &		Pallet Fork.....	43
#2167 & Perkins Diesel Before Serial #1686 ..	25-26	Fertilizer Bucket	44
Wisconsin & Ford Units After Serial #2166 ...	27-28	Foundry Bucket	44
Perkins Diesel After Serial		Produce Bucket.....	44
#1685.....	29-31	Utility Bucket	44
Electrical System.....	32-33	Grapple Fork	45
Hydraulic Pumps, Motors, Valves &		All Weather Enclosure	46-47
Cylinders	34-39	Decal Locations	48-49
Piston Pump - Front	34	Numerical Index	50-53
Piston Pump - Rear	35	Torque Specifications & Attaching	
Gear Pump.....	36	Hardware Table	Inside Back Cover
Hydrostatid Drive Motor	37		

HL4400 - ENGINE (PERKINS)



Ref. No.	Part No.	Part Name	No. Req.
1	13E24	Roll Pin 1/4 x 1-1/4	2
2	H6187	Pump Support Washer	2
3	042826	Shim Washer	4
4	054798	Muffler	1
5	054799	Muffler Clamp	1
		(Two req'd. before Serial #2167)	
6	054808	Double Chain (#50-2) of 16 Links Including One (050409) Connector Link	1
7	054812	J-Clamp	3
	650548	RHMS #1024 x 1/2	1
		(1) #1024 HN - (1) #10 LW	
8	054816A	90° Male Adapter	2
9	054854	90° Male Adapter Elbow	1
		(Used before Serial #2035)	
10	054958	Radiator Cap	1



WARNING - Order By Part Number - Do Not Use Illustration Reference Numbers

Continued ►

Thanks for your reading.

Please click here to download complete manual instantly.

And can also choose other manuals.

Feel free --->write to me with any questions.

Our service email:

manuals007@hotmail.com