

GEHL®

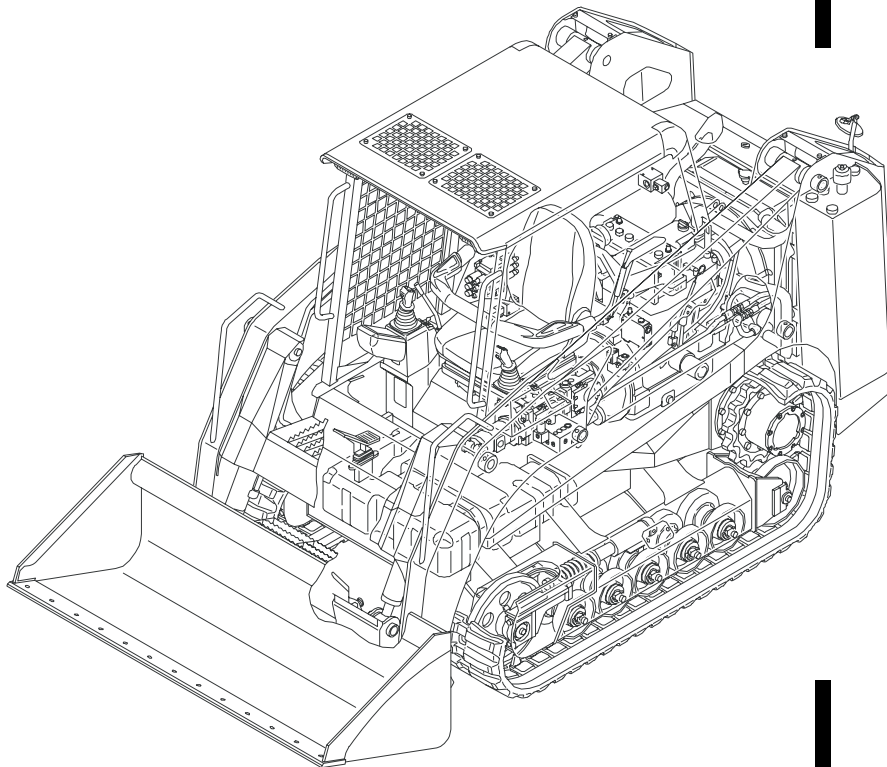
Form No.
917294

Revision C
03/09

CTL 65

Compact

Track Loader



PARTS MANUAL

Introduction

For your safety and continued proper operation, use only genuine GEHL® service parts. When ordering service parts, specify the correct part number, full description, quantity required, the unit model number and serial number.

The model and serial number decal for this unit is located on the right rear riser. “Right” and “Left” are determined from a position sitting on the seat and facing forward.

GEHL Company reserves the right to make changes or improvements in the design or construction of any part of the unit without incurring the obligation to install such changes on any previously delivered units.

Refer to the abbreviations table located on this page for the various fastener descriptions. Standard attaching hardware torque values are also provided on the inside back cover.

Items shown in the parts list that do not have part numbers are shown for reference purposes only and are NOT available for purchase.

NOTE: The following abbreviations and symbols may be used herein:

A	Ampere
AR	As Required
ASSY	Assembly
AUX	Auxiliary
CCA	Cold Cranking Amperage
CYL	Cylinder
DH	Dual Hand
DJS	Dual Joystick
FL	Flare
FOPS	Falling Object Protective Structure
GA	Gauge
HEX	Hexagon
H/F	Hand/Foot
HF	High Flow
HYD	Hydraulic
JIC	Joint Industrial Council
kW	Kilowatt
LBS	Pounds
M	Meter
MM (mm)	Millimeter
NA	Naturally Aspirated
N/A	Not Applicable
NEG	Negative
N•m	Newton meter
NO	Number
NPT	National Pipe Thread
PN	Part Number
POS	Positive
PSI	Pounds per Square Inch
QTY	Quantity
REF	Reference
REQ'D	Required
ROPS	Roll Over Protective Structure
RPM	Revolutions Per Minute
SAE	Society of Automotive Engineers
SN	Serial Number
SQ	Square
ST	Straight
TB	T-Bar
TB/JS	T-Bar/Joystick
TURBO	Turbocharger
V	Volt

TABLE OF CONTENTS

DESCRIPTION	PAGE
-------------	------

SECTION A: MAIN LOADER COMPONENT

Track Roller A and B	1
Front Idler	3
Track Adjuster	4
Travel Device	5
Crawler Belt	6
Mainframe	7
Lift Arm Stop (with Hook Assembly)	8
Operation Lever and Stand	10
Piping; Operation Lever	11
Engine and Accessories	12
Drain Plug	18
Control Box - Right and Left	19
Engine Control	21
Electrical	22
Electrical - Multi-Functional Grip	30
Electrical - Cab	31
Battery	32
Rear Lamp	33
Maintenance Light Socket	34
Control Valve and Accessories	35
Piping; Hydraulic Tank and Drive Motors	40
Pump Drive	43
Hydraulic Tank	44
Fuel Tank and Fuel Piping	46
Covers - Rear Grille and Engine	49
Floor Frame	53
Seat and Seat Components	55
Restraint Bar	59
ROPS (with lights and harness)	60
Mirrors - Rear and Rearview, plus Manual Box	63
Lift Arm	66
Attachment System	68
Piping; Lift Arm	69
Auxiliary Hydraulics	70
Foot Throttle	71
Decals	74

(continued on next page)

TABLE OF CONTENTS

DESCRIPTION	PAGE
-------------	------

SECTION B: HYDRAULIC COMPONENTS

Control Valve.....	85
Pilot Valve (LH) Multi-Functional Grip.....	87
Pilot Valve (RH) Multi-Functional Grip.....	88
Handle - Multi-Functional Grip (with slide switch).....	89
Handle - Multi-Functional Grip (with five switches).....	90
Sub Valve.....	91
Solenoid Valve; 1 Block.....	92
Electrical Proportion Valve.....	93
Lift Cylinder.....	94
Tilt Cylinder.....	95
Travel Motors.....	96
Hydraulic Pump.....	99
Gear Pump.....	103

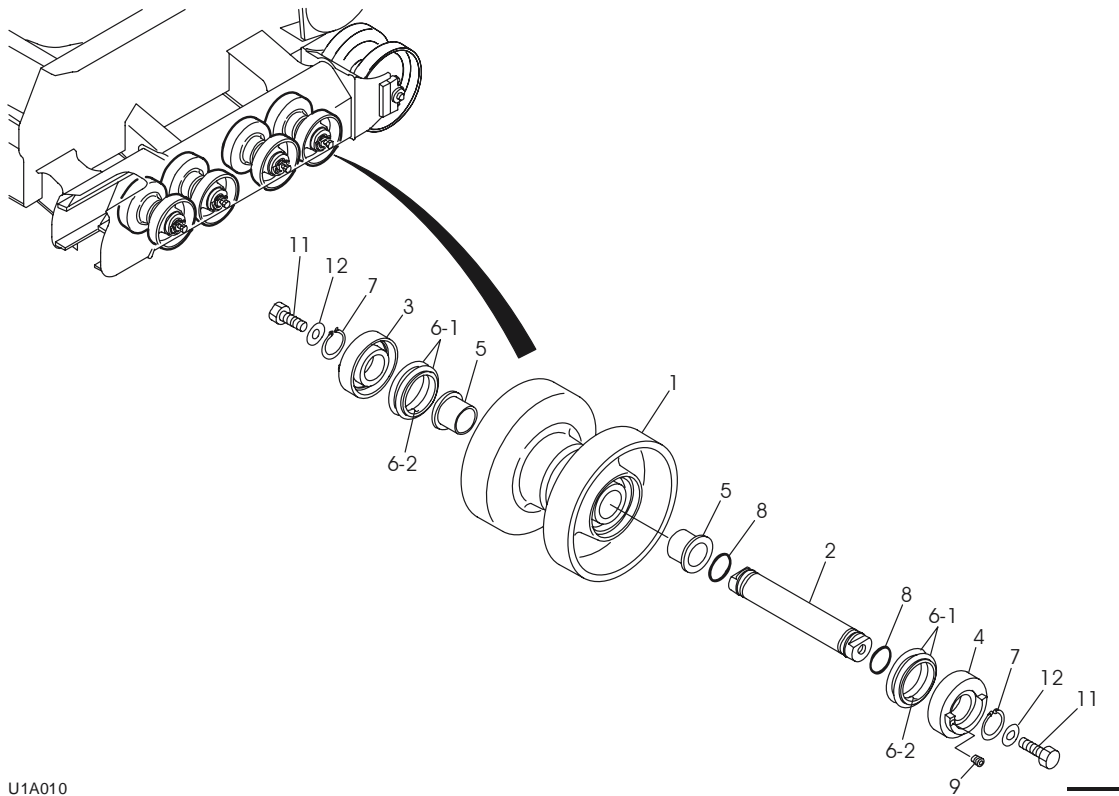
SECTION C: KITS AND ACCESSORIES

810946 Universal Radio Kit.....	105
810831 Door Kit.....	106
Auxiliary Couplers.....	107
810901 Side Window Kit.....	109
810898 Impact-Resistant Front Door Kit.....	110
811343 Pre-Cleaner Kit.....	112
811350 Power-A-Tach Kit.....	113
811347 HVAC Kit.....	115
811428 14-Pin Connector Kit.....	124
Numerical Index.....	126
O-Ring Table, Coupling & Adapter Torque Table.....	135
Torque Specifications Table.....	Inside Back Cover

SECTION A: MAIN LOADER COMPONENTS

Track Roller A and B	1
Front Idler	3
Track Adjuster	4
Travel Device	5
Crawler Belt	6
Mainframe	7
Lift Arm Stop (with Hook Assembly)	8
Operation Lever and Stand	10
Piping; Operation Lever	11
Engine and Accessories	12
Drain Plug	18
Control Box - Right and Left	19
Engine Control	21
Electrical	22
Electrical - Multi-Functional Grip	30
Electrical - Cab	31
Battery	32
Rear Lamp	33
Maintenance Light Socket	34
Control Valve and Accessories	35
Piping; Hydraulic Tank and Drive Motors	40
Pump Drive	43
Hydraulic Tank	44
Fuel Tank and Fuel Piping	46
Covers - Rear Grille and Engine	49
Floor Frame	53
Seat and Seat Components	55
Restraint Bar	59
ROPS (with lights and harness)	60
Mirrors - Rear and Rearview, plus Manual Box	63
Lift Arm	66
Attachment System	68
Piping; Lift Arm	69
Auxiliary Hydraulics	70
Foot Throttle	71
Decals	74

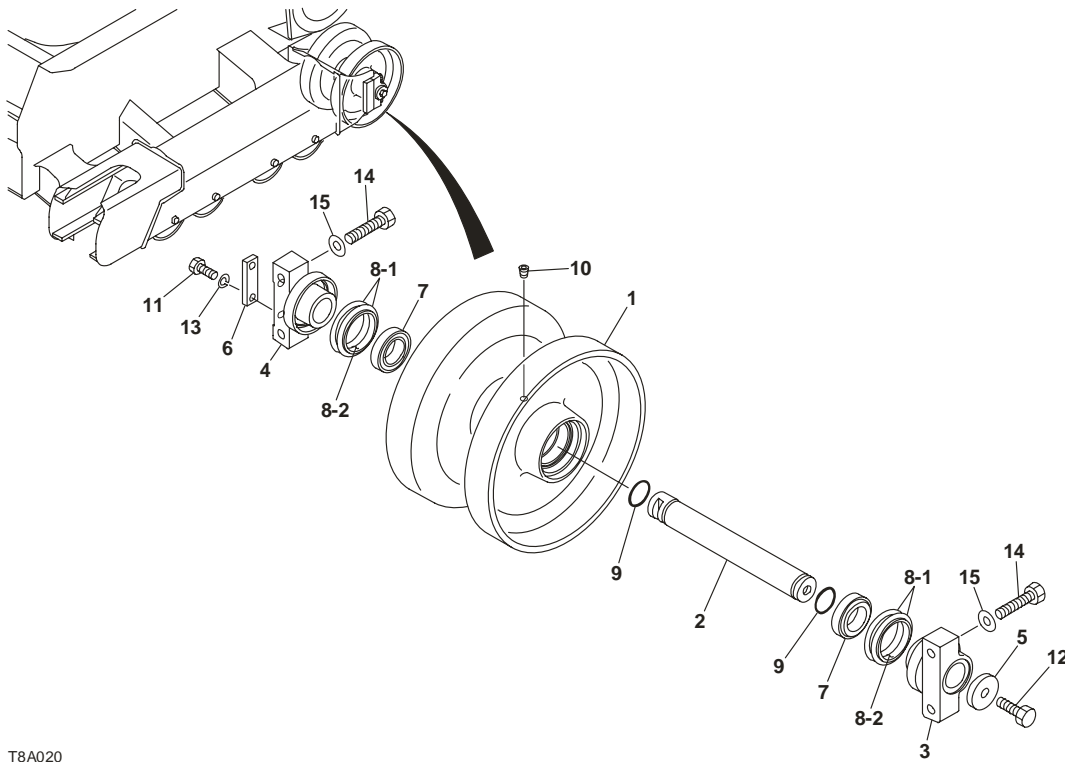
TRACK ROLLER A



U1A010

Ref. No.	Part No.	Description	Quantity
0-1	180775	ROLLER SUB ASSY, track	8
1		.ROLLER	1
2	180851	.SHAFT	1
3	180217	.COVER	1
4	185847	.COVER	1
5	180164	.BUSHING	2
6	180837	.SEAL, floating TWO PIECES EQUALS ONE SEAL	2
6-1		..O-RING TWO PIECES EQUALS ONE SEAL	2
6-2		..RING, seal TWO PIECES EQUALS ONE SEAL	2
7	180760	.RING, snap	2
8	180551	.O-RING	2
9	196038	.PLUG	1
11	180097	BOLT	16
12	181033	WASHER	16

TRACK ROLLER B

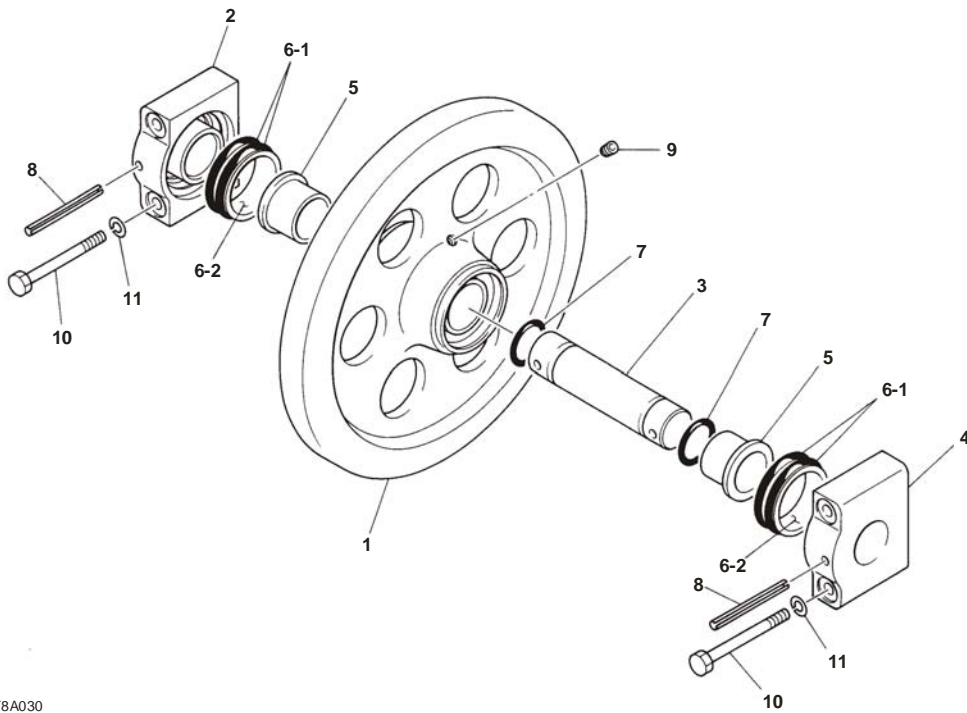


T8A020

S=1/8, 1/2C

Ref. No.	Part No.	Description	Quantity
0-1	180776	ROLLER SUB ASSY, track	2
1		.ROLLER	1
2	180853	.SHAFT	1
3	180226	.COVER	1
4	180227	.COVER	1
5	180657	.PLATE	1
6	180658	.PLATE	1
7	180052	.BEARING	2
8	180838	.SEAL, floating TWO PIECES EQUALS ONE SEAL	2
8-1		..O-RING TWO PIECES EQUALS ONE SEAL	2
8-2		..RING, seal TWO PIECES EQUALS ONE SEAL	2
9	180552	.O-RING	2
10	180684	.PLUG	1
11	180088	.BOLT	2
12	180105	.BOLT	1
13	181051	.WASHER, spring	2
14	180095	BOLT	8
15	181032	WASHER	8

FRONT IDLER



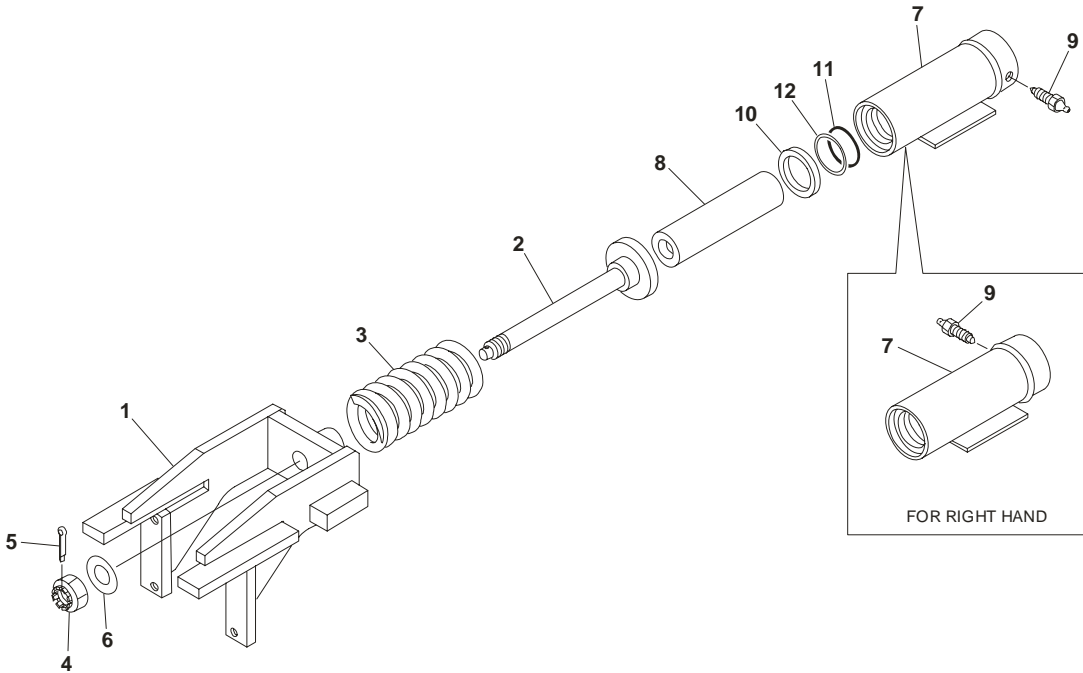
T8A030

S=1/5

Ref. No.	Part No.	Description	Quantity
0	180477	IDLER ASSY	2
1	a	.IDLER	1
2	180243	.COVER (R.H.)	1
3	180852	.SHAFT	1
4	180243	.COVER (L.H.)	1
5	180149b	.BUSH (OPM PART)	2
	185739c	BUSH (AFTER-MARKET PART)	2
6	180838	.SEAL, floating TWO PIECES EQUALS ONE SEAL	2
6-1		..O-RING TWO PIECES EQUALS ONE SEAL	2
6-2		..RING, seal TWO PIECES EQUALS ONE SEAL	2
7	180553	.O-RING	2
8	180623	.PIN, spring	2
9	180684	.PLUG	1
10	180099	BOLT	8
11	181052	WASHER, spring 12 MM	8

- a) A THREE OR SIX-HOLE PATTERN IDLER IS THE ORIGINAL IDLER ASSEMBLY.
a) A SOLID-PATTERN IDLER IS AN AFTER-MARKET IDLER ASSEMBLY.
b) 180149 BUSHING IS FOR AN ORIGINAL IDLER ASSEMBLY.
c) 185739 BUSHING IS FOR THE AFTER-MARKET IDLER ASSEMBLY.

TRACK ADJUSTER

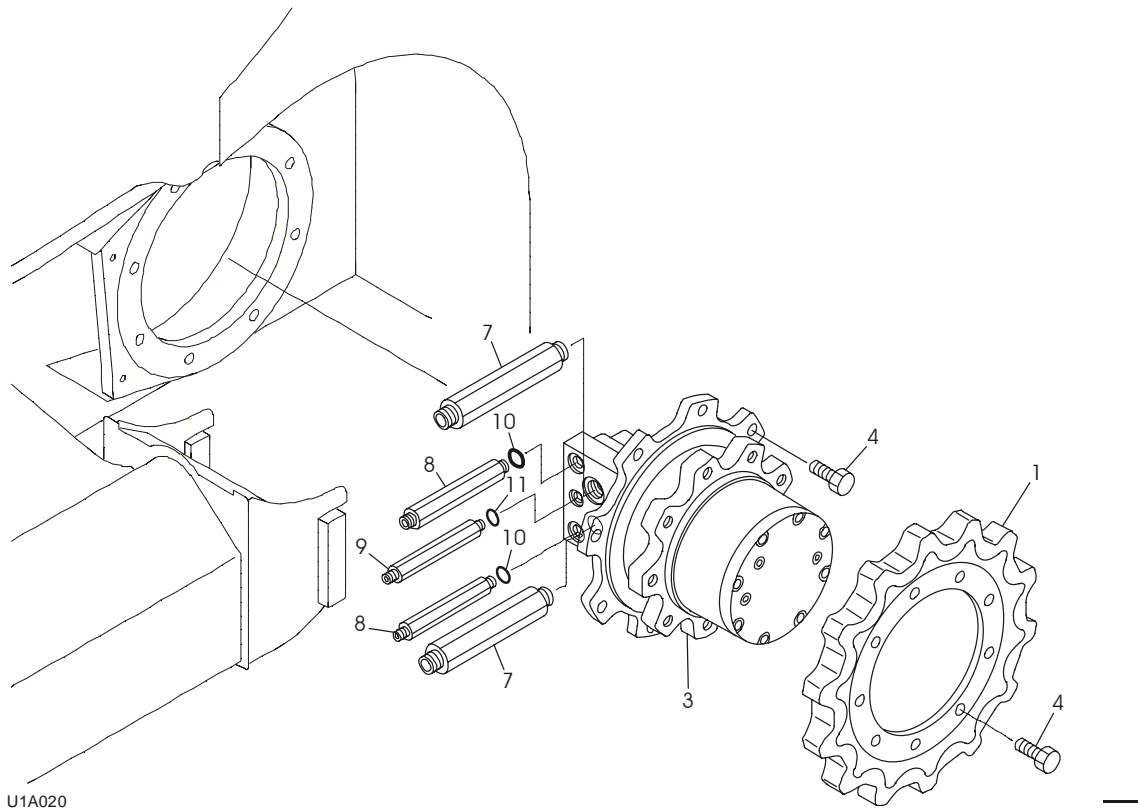


T8A040

S=1/8X110%

Ref. No.	Part No.	Description	Quantity
0-1	180912	SPRING ASSY(L.H.)	1
	180913	SPRING ASSY(R.H.)	1
1	181058	.YOKE	1
2	180765	.ROD	1
3	180886	.SPRING	1
4	180525	.NUT	1
5	180617	.PIN, split	1
6	181035	.WASHER	1
0-1	188174	.CYLINDER ASSY (L.H.)	1
	188175	.CYLINDER ASSY (R.H.)	1
7	180268	..CYLINDER, grease(L.H.)	1
	180269	..CYLINDER, grease(R.H.)	1
8	180633	..PISTON	1
9	180987	..VALVE ASSY, check	1
10	180841	..SEAL, oil	1
11	180549	..O-RING	1
12	180744	..RING, back-up	1

TRAVEL DEVICE



Ref. No.	Part No.	Description	Quantity
1	180917A	SPROCKET	2
3	196106	MOTOR, travel	2
4	185355	BOLT	34
7	180018	ADAPTOR	4
	180547	.O-RING	1
8	180015	ADAPTOR	4
9	180017	ADAPTOR	2
10	180540	O-RING	4
11	180542	O-RING	2

A) TO CHECK FOR SPROCKET WEAR, ORDER P/N 190762 - SPROCKET WEAR GAUGE.

Thanks for your reading.

Please click here to download complete manual instantly.

And can also choose other manuals.

Feel free --->write to me with any questions.

Our service email:

manuals007@hotmail.com