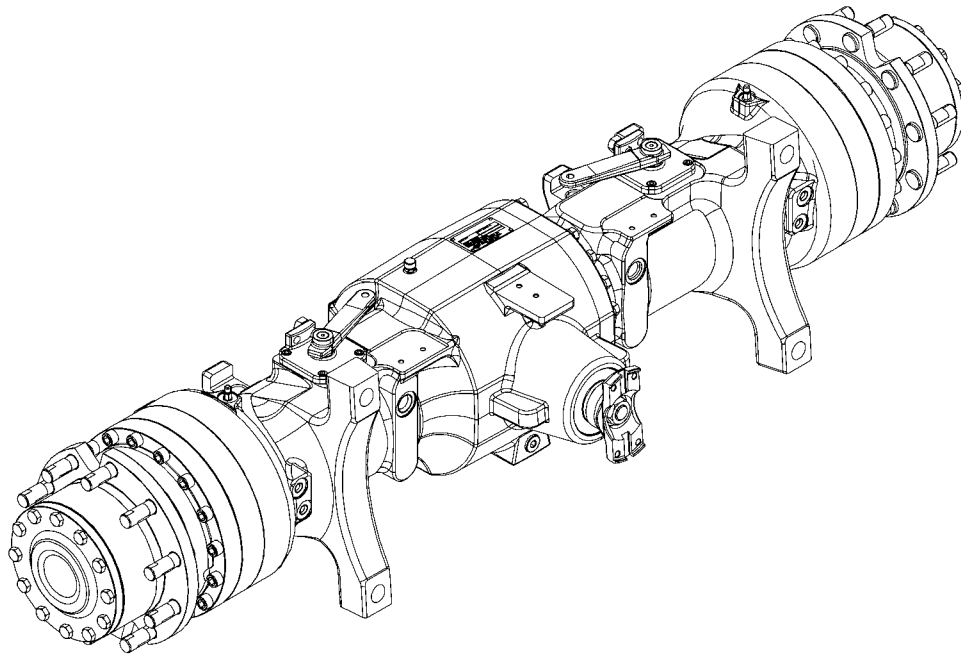


# **DRIVE AXLE AND DIFFERENTIAL ASSEMBLY REPAIR**

**(WET BRAKE)**

**H6.0FT, H7.0FT (H135FT, H155FT)  
[H006, J006, K006, L006];  
H8.0FT, H8.0FT9, H9.0FT  
(H170FT, H175FT36, H190FT)  
[A299, B299, C299]**



# ***HYSTER***

# SAFETY PRECAUTIONS

## MAINTENANCE AND REPAIR

- The Service Manuals are updated on a regular basis, but may not reflect recent design changes to the product. Updated technical service information may be available from your local authorized Hyster® dealer. Service Manuals provide general guidelines for maintenance and service and are intended for use by trained and experienced technicians. Failure to properly maintain equipment or to follow instructions contained in the Service Manual could result in damage to the products, personal injury, property damage or death.
- When lifting parts or assemblies, make sure all slings, chains, or cables are correctly fastened, and that the load being lifted is balanced. Make sure the crane, cables, and chains have the capacity to support the weight of the load.
- Do not lift heavy parts by hand, use a lifting mechanism.
- Wear safety glasses.
- DISCONNECT THE BATTERY CONNECTOR before doing any maintenance or repair on electric lift trucks. Disconnect the battery ground cable on internal combustion lift trucks.
- Always use correct blocks to prevent the unit from rolling or falling. See HOW TO PUT THE LIFT TRUCK ON BLOCKS in the **Operating Manual** or the **Periodic Maintenance** section.
- Keep the unit clean and the working area clean and orderly.
- Use the correct tools for the job.
- Keep the tools clean and in good condition.
- Always use **HYSTER APPROVED** parts when making repairs. Replacement parts must meet or exceed the specifications of the original equipment manufacturer.
- Make sure all nuts, bolts, snap rings, and other fastening devices are removed before using force to remove parts.
- Always fasten a DO NOT OPERATE tag to the controls of the unit when making repairs, or if the unit needs repairs.
- Be sure to follow the **WARNING** and **CAUTION** notes in the instructions.
- Gasoline, Liquid Petroleum Gas (LPG), Compressed Natural Gas (CNG), and Diesel fuel are flammable. Be sure to follow the necessary safety precautions when handling these fuels and when working on these fuel systems.
- Batteries generate flammable gas when they are being charged. Keep fire and sparks away from the area. Make sure the area is well ventilated.

**NOTE:** The following symbols and words indicate safety information in this manual:



### **WARNING**

Indicates a hazardous situation which, if not avoided, could result in death or serious injury.



### **CAUTION**

Indicates a hazardous situation which, if not avoided, could result in minor or moderate injury and property damage.

On the lift truck, the **WARNING** symbol and word are on orange background. The **CAUTION** symbol and word are on yellow background.

## TABLE OF CONTENTS

General .....	1
Identification Plate .....	1
Drive Axle Removal .....	1
Planetary Reduction Gear Repair .....	12
Remove and Disassemble .....	12
Clean and Inspect .....	21
Assemble and Install .....	21
Brake Repair .....	29
Remove and Disassemble .....	30
Clean and Inspect .....	43
Assemble and Install .....	43
Wet Brake Noise Reduction .....	53
General .....	53
Adding Additive To Transmission .....	54
Differential Repair .....	54
Remove .....	55
Disassemble .....	60
Clean and Inspect .....	66
Assemble .....	67
Install .....	74
Bevel Pinion .....	78
Remove and Disassemble .....	78
Clean and Inspect .....	82
Assemble and Install .....	83
Drive Axle Installation .....	92
Special Tools .....	102
Torque Specifications .....	103

This section is for the following models:

H6.0FT, H7.0FT (H135FT, H155FT) [H006, J006, K006, L006];  
H8.0FT, H8.0FT9, H9.0FT (H170FT, H175FT36, H190FT) [A299, B299, C299]

**"THE  
QUALITY  
KEEPERS"**

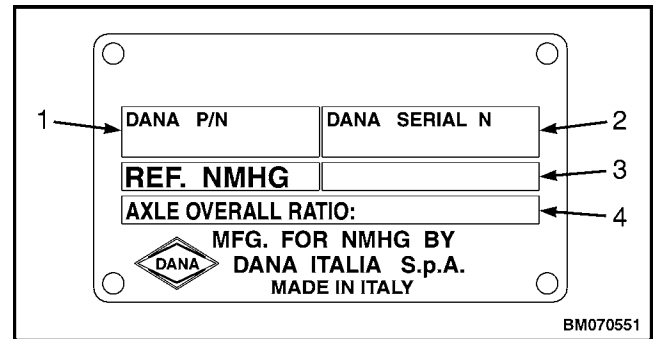
**HYSTER  
APPROVED  
PARTS**

## General

This manual covers the repair of the drive axle, differential, and the wet disc brakes.

### IDENTIFICATION PLATE

See Figure 1.



1. DANA PART NUMBER
2. DANA SERIAL NUMBER
3. HYSTER PART NUMBER
4. AXLE OVERALL RATIO

*Figure 1. Identification Plate*

## Drive Axle Removal



### WARNING

When putting the lift truck on blocks, make sure the surface is solid, even, and level. Any blocks used to support the lift truck must be solid, one-piece units.

1. Put blocks on each side (front and back) of the steering tires to prevent movement of the lift truck.
2. Raise the lift truck and put blocks under the frame so that the drive wheels do not touch the floor. Put blocks under the counterweight for stability.
3. Remove the mast assembly as described in the section

**Mast Repairs, 2- and 3-Stage Masts (S/N A513, A514, A613, A614, A702, A703, A704, A705, A706, A707, A751, A752, B513, B514, B586, B587, B588, B589, B590, B591, B749, B750, B751, B752, B753, B754)**

4000SRM1250 for lift truck models

- H6.0FT, H7.0FT (H135FT, H155FT) (H006, J006, K006)

**Mast Repair (S/N A513, A514, A613, A614, A643, A644, A683, A684)** 4000SRM1406 for lift truck models.

- H8.0FT, H8.0FT9, H9.0FT (H170FT, H175FT36, H190FT) (A299, B299)

**Mast Repair (S/N A613, A614, A643, A644, A683, A684)** 4000SRM1956 for lift truck models

- H6.0FT, H7.0FT (H135FT, H155FT) (L006)

**Mast Repair (S/N A613, A614, A643, A644, A683, A684)** 4000SRM1956 for lift truck models

- H8.0FT, H8.0FT9, H9.0FT (H170FT, H175FT36, H190FT) (C299)



### WARNING

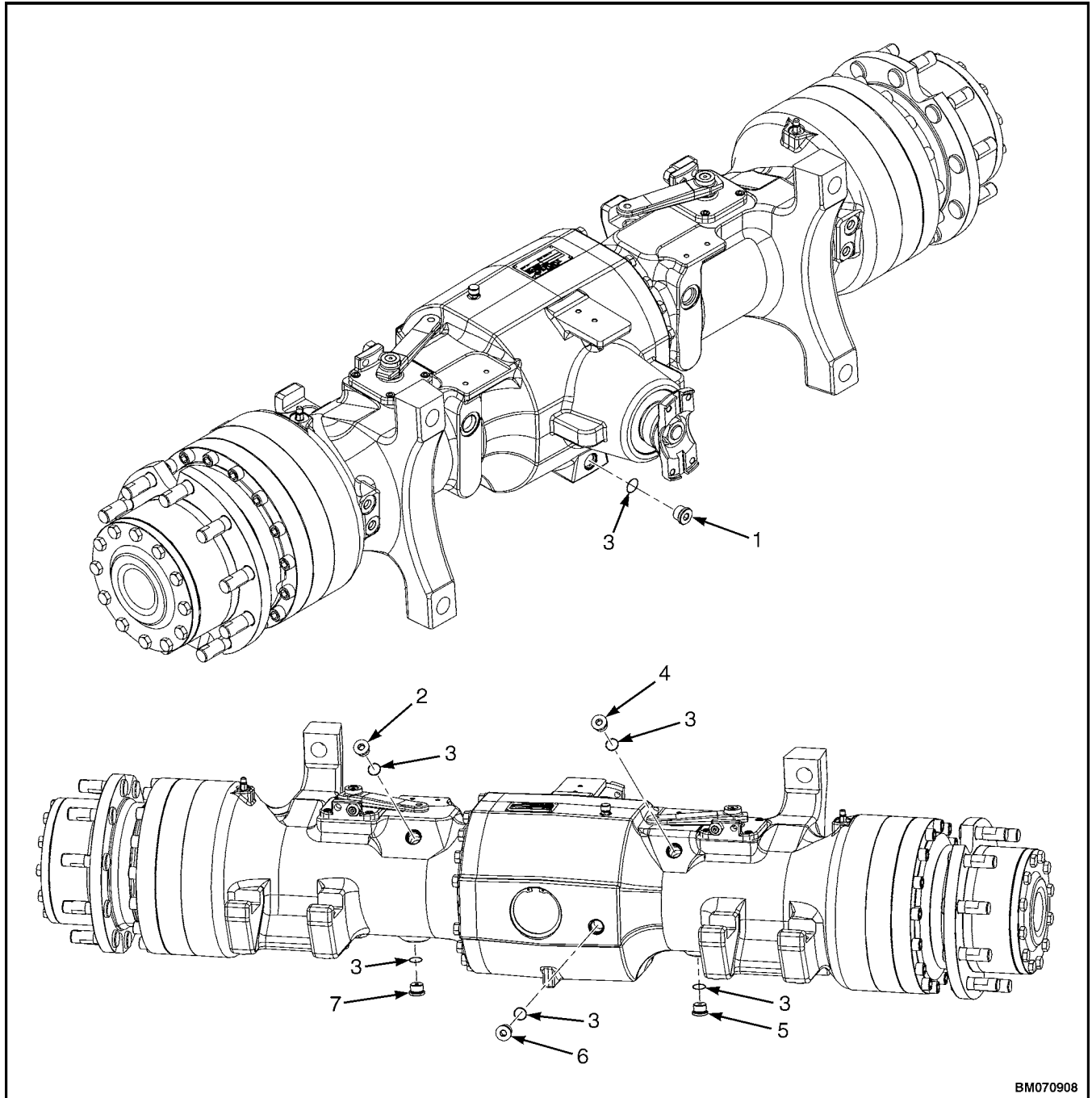
Completely remove air from tires before removing them from lift truck. Air pressure in tires can cause tire and rim parts to explode, which can cause serious injury or death. Never loosen nuts that hold together inner and outer wheel halves when there is air pressure in tire.

4. Remove the air from the tires and remove the wheels.

**NOTE:** Perform Step 5 through Step 23 for lift truck models H6.0FT, H7.0FT (H135FT, H155FT) (H006, J006, K006, L006) .

5. Remove the drive axle main housing center fill/level plug and O-ring. See Figure 2.
6. Remove the oil fill plugs and O-rings on both sides of the drive axle. See Figure 2.
7. Remove the oil drain plugs on both sides of the drive axle. Drain the oil into a suitable container. See Figure 2.
8. Remove the drive axle main housing center drain plug. Drain the oil into a suitable container. See Figure 2.
9. Remove the parking brake cables. Refer to the section  
**Brake System - DANA 1800SRM1247** for lift truck models
  - H6.0FT, H7.0FT (H135FT, H155FT) (H006, J006, K006)**Wet Brake System 1800SRM1977** for lift truck models
  - H6.0FT, H7.0FT (H135FT, H155FT) (L006)
10. Disconnect the brake supply line from the brake line cross fitting on the drive axle. See Figure 3.
11. Disconnect the accumulator/brake booster supply line from the manifold on the drive axle. See Figure 3.
12. Disconnect the brake booster return line from the manifold on the drive axle. See Figure 3.
13. Disconnect the drive axle to transmission cooling return hose from the manifold on the drive axle. See Figure 3.
14. Disconnect the transmission to drive axle cooling supply hose from the manifold on the drive axle. See Figure 3.
15. Place blocks under the axle assembly and connect slings and lifting device.
16. Remove the capscrews retaining the drive shaft. Remove the drive shaft.
17. Remove the four mounting capscrews and washers from the drive axle. See Figure 4.
18. Remove blocks and lower the drive axle assembly. Pull axle forward and away from frame.
19. Place blocks under the differential assembly.
20. Disconnect the cooling hoses from the manifold and drive axle. Remove the cooling hoses. See Figure 5.
21. Disconnect the brake cooling lines from the manifold and the drive axle. Remove the brake cooling lines. See Figure 5.
22. Remove the socket head screws retaining the brake manifold to the drive axle. Remove the manifold. See Figure 5.
23. Disconnect the brake lines from the drive axle. Remove the brake lines with cross fitting, as an assembly, from the drive axle. See Figure 5.

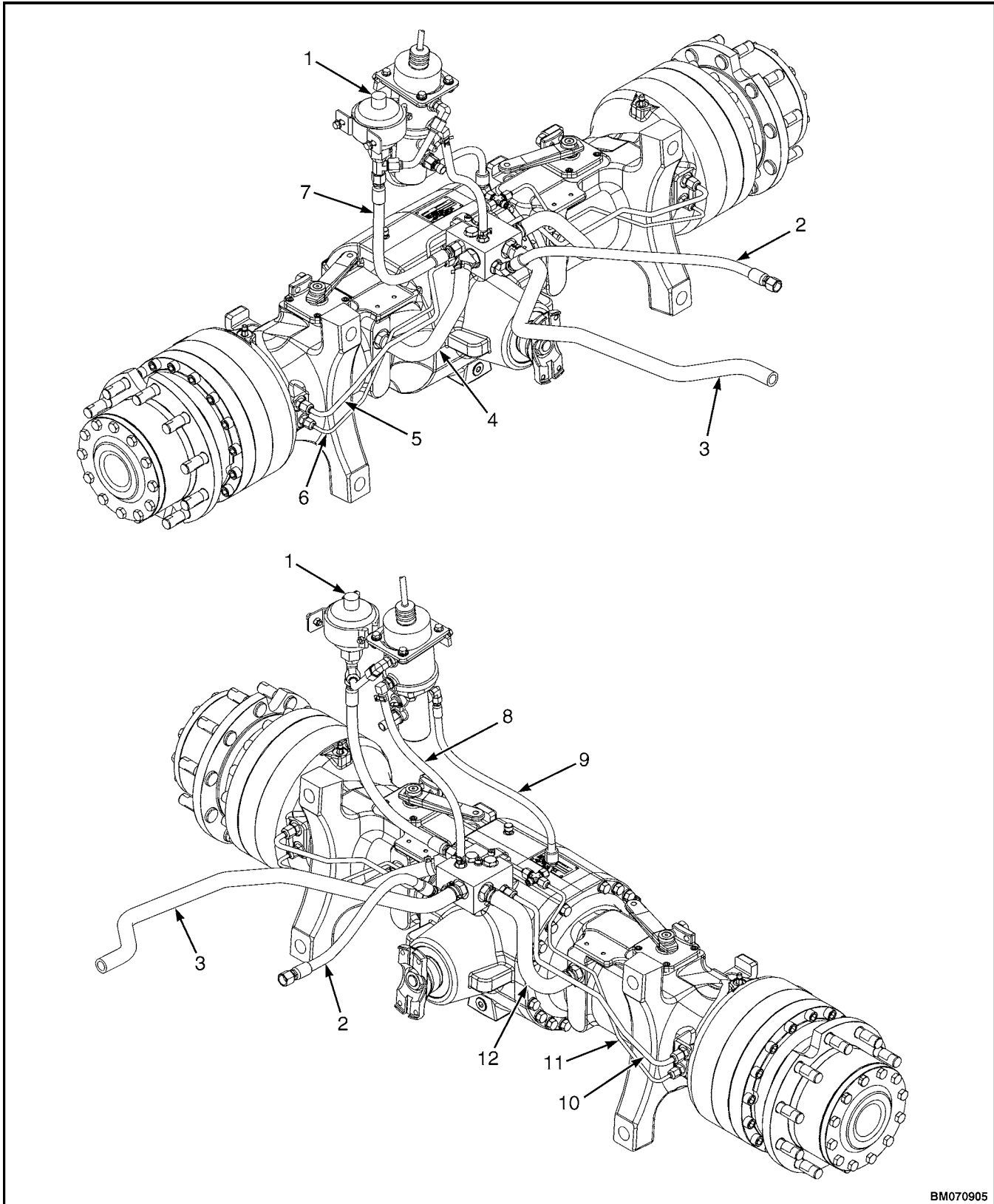
**NOTE:** Note placement of hose clamps prior to removal of hoses to aid in installation.



BM070908

- |  |  |
|--|--|
| 1. DRIVE AXLE MAIN HOUSING CENTER DRAIN PLUG | 5. OIL DRAIN PLUG, LEFT SIDE                       |
| 2. OIL FILL PLUG, RIGHT SIDE                 | 6. DRIVE AXLE MAIN HOUSING CENTER FILL/ LEVEL PLUG |
| 3. O-RING                                    | 7. OIL DRAIN PLUG, RIGHT SIDE                      |
| 4. OIL FILL PLUG, LEFT SIDE                  |  |

**Figure 2. Drive Axle Drain and Fill/Level Plugs for Lift Truck Models, H6.0FT, H7.0FT (H135FT, H155FT) (H006, J006, K006, L006)**



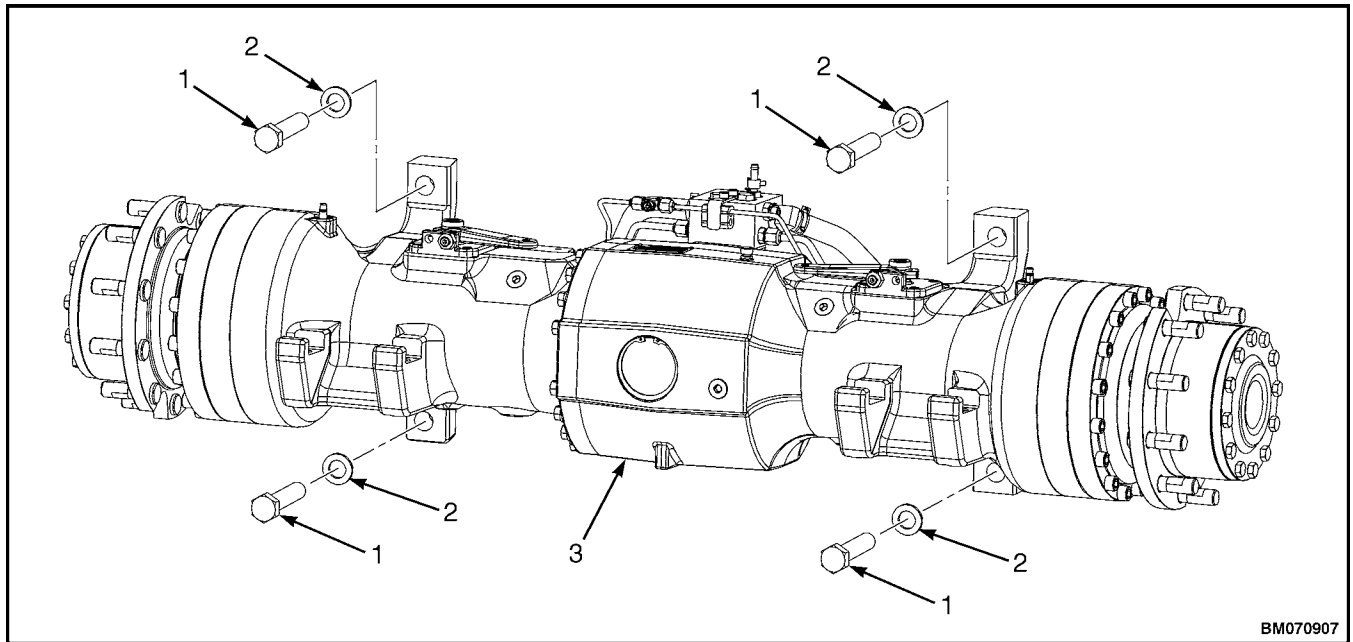
BM070905

**Figure 3. Drive Axle and Brake Cooling Lines and Brake Lines for Lift Truck Models, H6.0FT, H7.0FT (H135FT, H155FT) (H006, J006, K006, L006)**



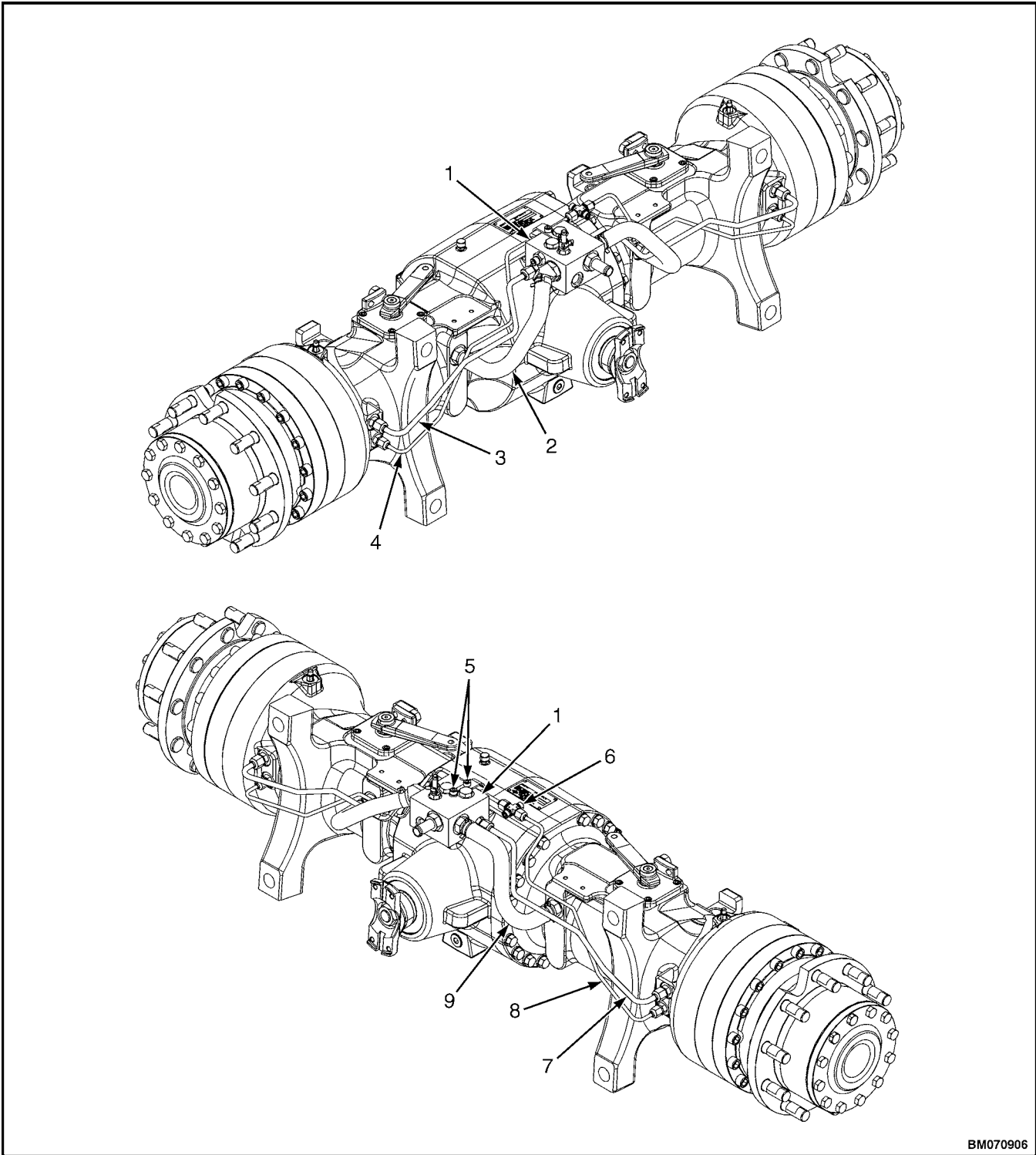
**Legend for Figure 3.**

- |   |  |
|---|--|
| 1. ACCUMULATOR                                    | 6. BRAKE LINE, LEFT SIDE                       |
| 2. TRANSMISSION TO DRIVE AXLE COOLING SUPPLY HOSE | 7. ACCUMULATOR/BRAKE BOOSTER SUPPLY LINE       |
| 3. DRIVE AXLE TO TRANSMISSION COOLING RETURN HOSE | 8. BRAKE BOOSTER RETURN LINE                   |
| 4. DRIVE AXLE COOLING RETURN HOSE, LEFT SIDE      | 9. BRAKE SUPPLY LINE                           |
| 5. BRAKE COOLING LINE, LEFT SIDE                  | 10. BRAKE COOLING LINE, RIGHT SIDE             |
|   | 11. BRAKE LINE, RIGHT SIDE                     |
|   | 12. DRIVE AXLE COOLING RETURN HOSE, RIGHT SIDE |



- |             |               |
|-------------|---------------|
| 1. CAPSCREW | 3. DRIVE AXLE |
| 2. WASHER   |               |

**Figure 4. Drive Axle Mounting Capscrews**



BM070906

**Figure 5. Manifold and Cooling Hoses Removal for Lift Truck Models, H6.0FT, H7.0FT (H135FT, H155FT) (H006, J006, K006, L006)**

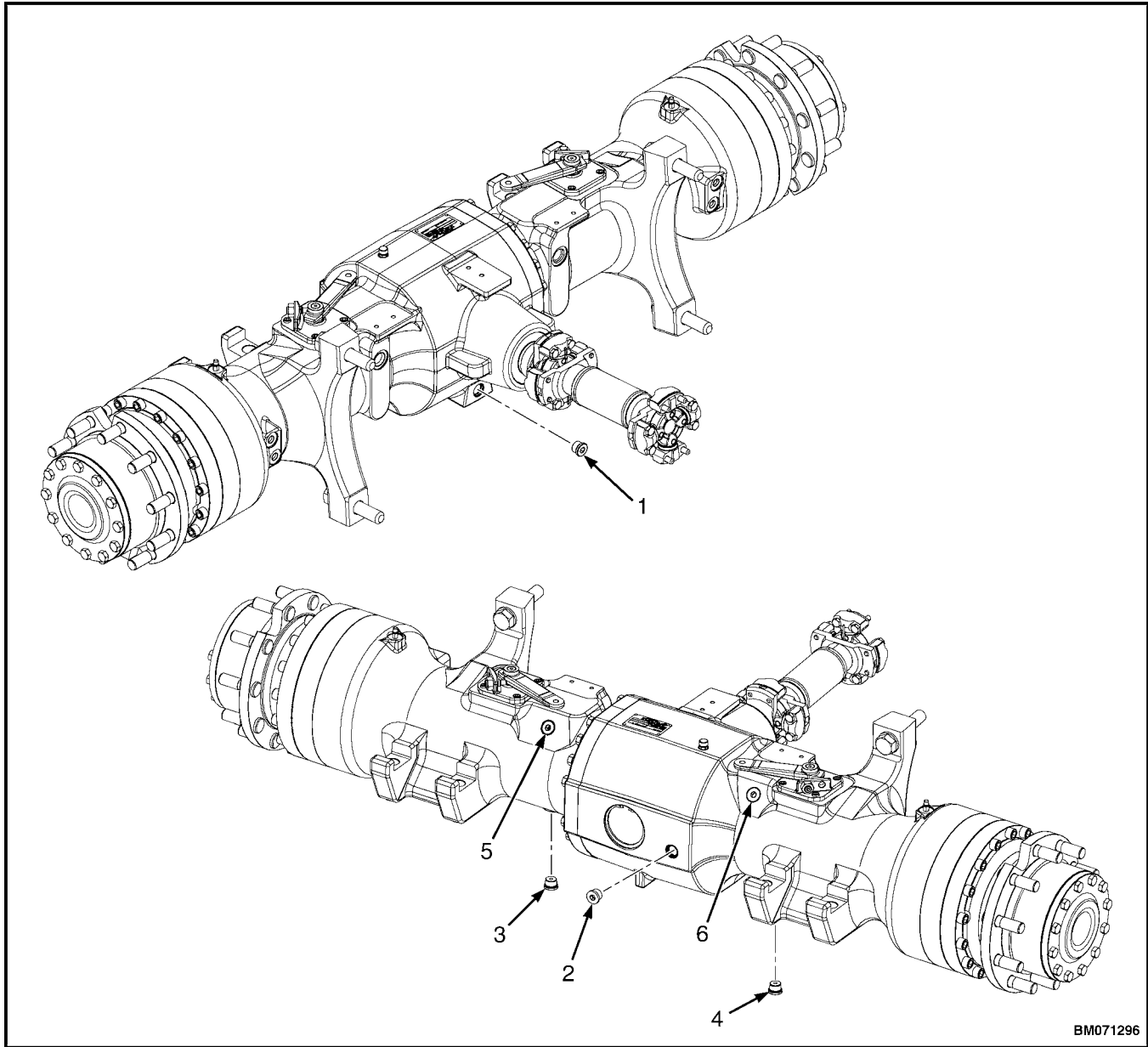
**Legend for Figure 5.**

- |  |   |
|--|---|
| 1. MANIFOLD                                  | 6. CROSS FITTING                              |
| 2. DRIVE AXLE COOLING RETURN HOSE, LEFT SIDE | 7. BRAKE COOLING LINE, RIGHT SIDE             |
| 3. BRAKE COOLING LINE, LEFT SIDE             | 8. BRAKE LINE, RIGHT SIDE                     |
| 4. BRAKE LINE, LEFT SIDE                     | 9. DRIVE AXLE COOLING RETURN HOSE, RIGHT SIDE |
| 5. SOCKET HEAD SCREWS                        |   |

**NOTE:** Perform Step 24 through Step 43 for lift truck model H8.0FT, H8.0FT9, H9.0FT (H170FT, H175FT36, H190FT) (A299, B299, C299) .

- 24.** Remove drive axle main housing center fill plug from main housing. See Figure 6.
- 25.** Remove right side and left side drain plugs from drive axle. Drain oil into suitable container. See Figure 6.

- 26.** Remove drive axle main housing center drain plug from main housing, Drain oil into suitable container. See Figure 6.



BM071296

- |  |                          |
|--|--------------------------|
| 1. DRIVE AXLE MAIN HOUSING CENTER DRAIN PLUG | 3. RIGHT SIDE DRAIN PLUG |
| 2. DRIVE AXLE MAIN HOUSING CENTER FILL PLUG  | 4. LEFT SIDE DRAIN PLUG  |
|  | 5. RIGHT SIDE FILL PLUG  |
|  | 6. LEFT SIDE FILL PLUG   |

**Figure 6. Drive Axle Drain and Fill Plugs for Lift Truck Models, H8.0FT, H8.0FT9, H9.0FT (H170FT, H175FT36, H190FT) (A299, B299, C299)**

**Thanks for your reading.**

**Please click here to download complete manual instantly.**

**And can also choose other manuals.**

**Feel free --->write to me with any questions.**

**Our service email:**

**manuals007@hotmail.com**