

WSM

WORKSHOP MANUAL **TRACTOR**

**M100GX, M110GX, M126GX,
M128GX, M128GX-FS,
M135GX, M135GX-FS**

Kubota

TO THE READER

This Workshop Manual tells the servicing personnel about the mechanism, servicing and maintenance of the M100GX, M110GX, M126GX, M128GX, M128GX-FS, M135GX and M135GX-FS. It contains 4 parts: "**Information**", "**General**", "**Mechanism**" and "**Servicing**".

■ **Information**

This section primarily contains information below.

- Safety First
- Safety Decal
- Specification
- Dimension

■ **General**

This section primarily contains information below.

- Engine Identification
- Model Identification
- General Precautions
- Maintenance Check List
- Check and Maintenance
- Special Tools

■ **Mechanism**

This section contains information on the structure and the function of the unit. Before you continue with the subsequent sections, make sure that you read this section.

Refer to the latest version of Workshop Manual (Code No. 9Y021-01870 / 9Y021-18200) for the diesel engine / tractor mechanism that this workshop manual does not include.

■ **Servicing**

This section primarily contains information below.

- Troubleshooting
- Servicing Specifications
- Tightening Torques
- Checking, Disassembling and Servicing

Regarding the servicing of Common Rail System (CRS), refer to "DIAGNOSIS MANUAL" (9Y120-01920, 9Y120-01860).

Regarding the servicing of Diesel Particulate Filter (DPF), refer to "DIESEL PARTICULATE FILTER HANDLING MANUAL" (9Y121-08130).

All illustrations, photographs and specifications contained in this manual are of the newest information available at the time of publication.

KUBOTA reserves the right to change all information at any time without notice.

Since this manual includes many models, information or illustrations and photographs can show more than one model.

August, 2012

© KUBOTA Corporation 2012

Record of Revisions

For pdf, use search function {Search word} to find all the revised locations.

Last digit of the Code No.	Issue month	Main Revised Point and Corrective Measures {Search word}	Reference Page
2	2014.07	<ul style="list-style-type: none"> • Correct specifications • Adding the informations (DPF regeneration system of Default Version) • Adding the information (When reassembling) • Correcting the tightening torque • Correcting tightening torque • Correcting tightening torque • Correcting the flow rate • Correcting the relief pressure • Correcting the clearance • Correcting errors of DTC (Diagnostic Trouble Code) • Adding the informations • Correcting errors • Adding Tightening torque 	I-21, I-22, I-26 1-M42 2-S47, 7-S17 2-S50 3-S3 3-S5 7-S3, 7-S6, 7-S8, 7-S10 7-S4, 7-S10 7-S26 8-S12, 8-S16 8-S17 8-S100, 8-S101, 8-S102, 8-S103, 8-S104 9-S8, 9-S55
3	2015.03	<ul style="list-style-type: none"> • Changing the title from "M100GX, M110GX, M126GX, M135GX, M135GX-FS" to "M100GX, M110GX, M126GX, M128GX, M128GX-FS, M135GX, M135GX-FS" • Adding M100GX, M128GX, M128GX-FS for Europe • Adding the maintenance for Europe 	–
4	2015.07	<ul style="list-style-type: none"> • Balancer shaft bearing replacing tool changed. 	G-122, G-124, G-125, G-126, 1-S145
5	2015.11	<ul style="list-style-type: none"> • Wrong Correction The topic "Adjusting Air Conditioner Belt Tension [M100GX, M110GX]" was moved to [4] CHECK POINTS OF EVERY 100 HOURS from [5] CHECK POINTS OF EVERY 200 HOURS 	G-31
		<ul style="list-style-type: none"> • Wrong Correction Rated pressure for hydraulic flow test was corrected. 	7-S3, 7-S4, 7-S6, 7-S8
		<ul style="list-style-type: none"> • Wrong Correction Engine speed as a condition for checking relief valve setting pressure was corrected. 	7-S4, 7-S10

Last digit of the Code No.	Issue month	Main Revised Point and Corrective Measures {Search word}	Reference Page
5	2015.11	<ul style="list-style-type: none"> Wrong Correction Additional line was drawn in the electric circuit because a wiring between battery and starter was missed in the previous circuit. Reference page: The diagram at the end of the book. 	8-M1, 8-M2, 8-M3, 8-M4, 8-M28, 8-M33
		<ul style="list-style-type: none"> Wrong Correction Correct: Black/White wiring connects to terminal 5 of main key switch. Reference page: The diagram at the end of the book. 	8-M1, 8-M2, 8-M3, 8-M4, 8-S93, 8-S94
		<ul style="list-style-type: none"> Wrong Correction Terminal no. of hand throttle lever sensor was corrected. Reference page: The diagram at the end of the book. 	8-M10
		<ul style="list-style-type: none"> Wrong Correction Wiring color between shuttle rotation sensor and main ECU was corrected. Reference page: The diagram at the end of the book. 	8-M10
		<ul style="list-style-type: none"> Wrong Correction Electric circuit for front wiper motor was corrected. Reference page: The diagram at the end of the book. 	8-M11
		<ul style="list-style-type: none"> Wrong Correction Correct: (7) Glow Relay, (8) Starter Relay 	8-M19
		<ul style="list-style-type: none"> Wrong Correction Correct: (1) Turn Signal Relay LH, (4) Turn Signal Relay Relay RH 	8-M26
		<ul style="list-style-type: none"> Wrong Correction E-R30 Unload Solenoid --> E-H30 Unload Solenoid 	8-S12
		<ul style="list-style-type: none"> Wrong Correction "Fail safe control or symptom caused by error" for the item ""N" blinks at range shift display (2)" was corrected 	8-S17
		<ul style="list-style-type: none"> Wrong Correction Item no. 64 is "Suspension pressure sensor". Item no. 65 is "Suspension stroke sensor". 	8-S69
		<ul style="list-style-type: none"> Topic "Sensor Resistance" was added. 	8-S108
		<ul style="list-style-type: none"> Wrong Correction Correct: Voltage across the terminal 1 - chassis is approx. battery voltage. 	8-S112
		<ul style="list-style-type: none"> Topic "Temperature Sensor (Build in Air Flow Sensor) Resistance" was added. 	8-S115
		<ul style="list-style-type: none"> Wrong Correction Correct: Wiring color for terminal 1 is Blue/Yellow 	8-S122
<ul style="list-style-type: none"> Wrong Correction Correct: Terminals to measure the hand throttle lever sensor resistance are terminal 2-3 and terminal 2-4 	8-S122		

Last digit of the Code No.	Issue month	Main Revised Point and Corrective Measures {Search word}	Reference Page
5	2015.11	<ul style="list-style-type: none"> Table for switch continuity check was changed. 	8-S124, 8-S125
		<ul style="list-style-type: none"> Wrong Correction Condition for checking connector voltage was corrected. 	8-S135
		<ul style="list-style-type: none"> Wrong Correction Correct: Wiring color for terminal 1 is Red/Green Wiring color for terminal 2 is Black Wiring color for terminal 3 is Gray/Blue 	8-S145
		<ul style="list-style-type: none"> Wrong Correction Wiring color for checking connector voltage is Light Green/Red 	8-S146
		<ul style="list-style-type: none"> Wrong Correction Correct: Wiring color for terminal 2 is Green/Orange Wiring color for terminal 3 is Red/Black 	8-S153
		<ul style="list-style-type: none"> Wrong Correction Correct: Wiring color for terminal 1 is Red/White Wiring color for terminal 2 is White/Violet Wiring color for terminal 3 is Black/White 	8-S155
		<ul style="list-style-type: none"> Wrong Correction Resistance value in the table was corrected. 	8-S161
		<ul style="list-style-type: none"> Wrong Correction Terminal No. in the figure was corrected. 	8-S165
		<ul style="list-style-type: none"> Wrong Correction Correct: (1) Turn Signal Relay LH, (2) Turn Signal Relay Relay RH 	8-S174
		<ul style="list-style-type: none"> Topic "(3) B2 Power Relay" was added 	8-S190
		<ul style="list-style-type: none"> Wrong Correction Relay location in the figure was corrected. 	9-M8
		<ul style="list-style-type: none"> Wrong Correction Table for connector voltage was corrected. 	9-S34
		<ul style="list-style-type: none"> Wrong Correction Table for connector voltage was corrected. 	9-S35
		<ul style="list-style-type: none"> Wrong Correction Table for switch continuity check was corrected. 	9-S35
		<ul style="list-style-type: none"> The topic "(3) Wiper Motor" was changed to "(3) Front Wiper Motor". 	9-S36
		<ul style="list-style-type: none"> The topic "(4) Rear Wiper Motor" was added. 	9-S37
		<ul style="list-style-type: none"> The topic "(5) Washer Tank Motor" was added. 	9-S38
6	2016.03	<ul style="list-style-type: none"> Information Update Additional fan belt tension information. 	G-26
		<ul style="list-style-type: none"> Wrong Correction Hydraulic pump specification was corrected. 	7-S3, 7-S4, 7-S6, 7-S8

| INFORMATION

INFORMATION

CONTENTS

1. SAFETY FIRST	I-1
2. SAFETY DECALS	I-4
[1] DANGER, WARNING AND CAUTION LABELS	I-4
(1) For North America Model	I-4
(2) For Oceania Model	I-10
[2] PICTORIAL SAFETY LABELS	I-16
(1) For Europe Model	I-16
3. SPECIFICATIONS	I-21
[1] FOR NORTH AMERICA MODEL	I-21
[2] FOR EUROPE MODEL	I-22
[3] FOR OCEANIA MODEL	I-26
4. TRAVELING SPEEDS	I-27
[1] FOR NORTH AMERICA MODEL	I-27
[2] FOR EUROPE MODEL	I-28
[3] FOR OCEANIA MODEL	I-29
5. DIMENSIONS	I-30
[1] FOR NORTH AMERICA MODEL	I-30
[2] FOR EUROPE MODEL	I-31
[3] FOR OCEANIA MODEL	I-32

1. SAFETY FIRST

SAFETY FIRST

- This symbol, the industry's "Safety Alert Symbol", is used throughout this manual and on labels on the machine itself to warn of the possibility of personal injury. Read these instructions carefully.
- It is essential that you read the instructions and safety regulations before you try to repair or use this unit.

DANGER

- Indicates an imminently hazardous situation which, if not avoided, will result in death or serious injury.

WARNING

- Indicates a potentially hazardous situation which, if not avoided, could result in death or serious injury.

CAUTION

- Indicates a potentially hazardous situation which, if not avoided, could result in minor or moderate injury.

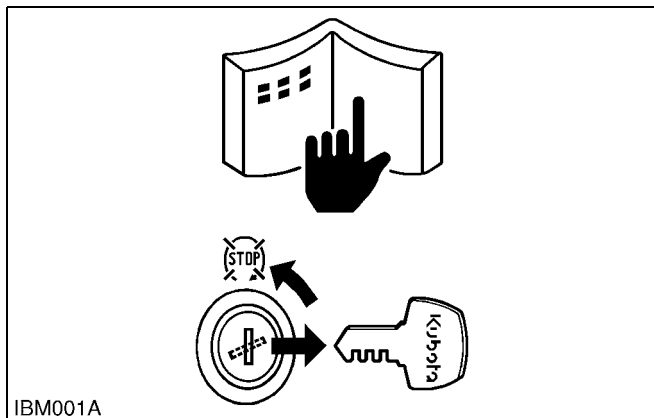
■ IMPORTANT

- Indicates that equipment or property damage could result if instructions are not followed.

■ NOTE

- Gives helpful information.

WSM000001INI0001US1

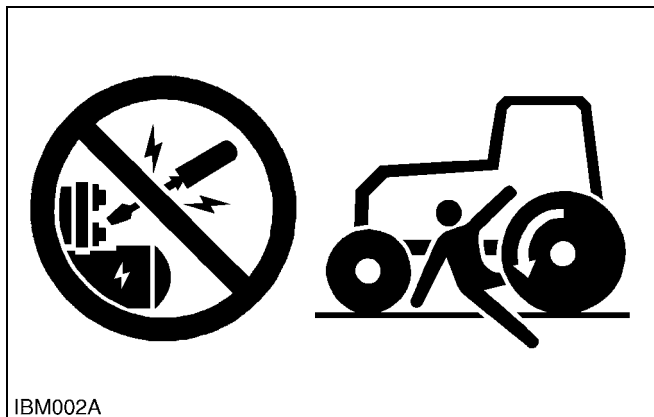


IBM001A

BEFORE YOU START SERVICE

- Read all instructions and safety instructions in this manual and on your machine safety decals.
- Clean the work area and machine.
- Park the machine on a stable and level ground, and set the parking brake.
- Lower the implement to the ground.
- Stop the engine, then remove the key.
- Disconnect the battery negative cable.
- Hang a "DO NOT OPERATE" tag in the operator station.

WSM000001INI0010US0

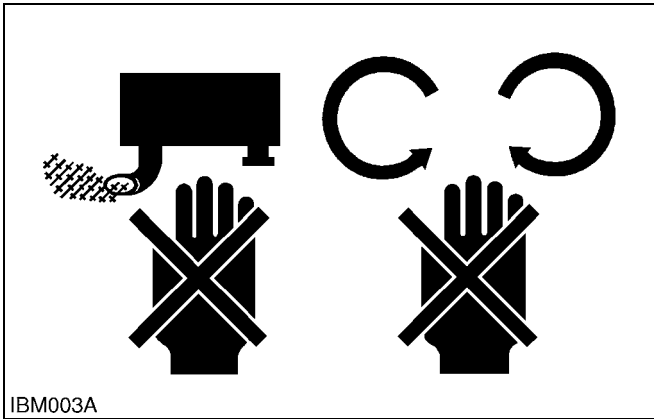


IBM002A

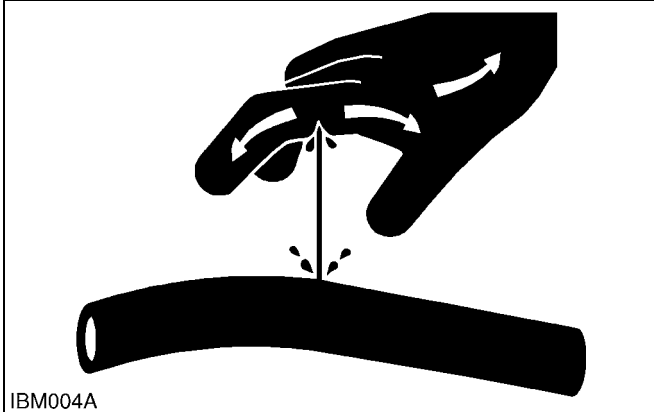
START SAFELY

- Do not do the procedures below when you start the engine.
 - short across starter terminals
 - bypass the safety start switch
- Do not alter or remove any part of machine safety system.
- Before you start the engine, make sure that all shift levers are in neutral positions or in disengaged positions.
- Do not start the engine when you stay on the ground. Start the engine only from operator's seat.

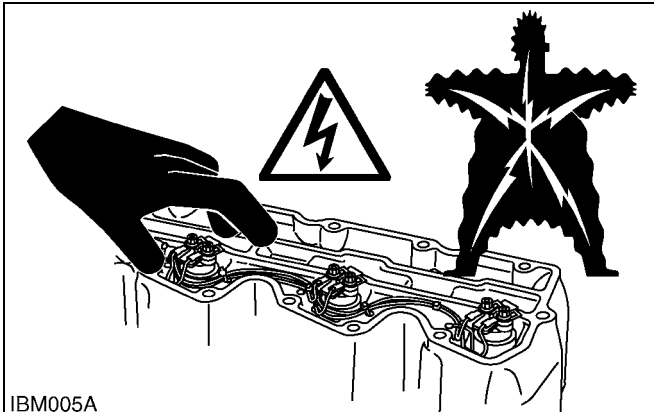
WSM000001INI0015US0



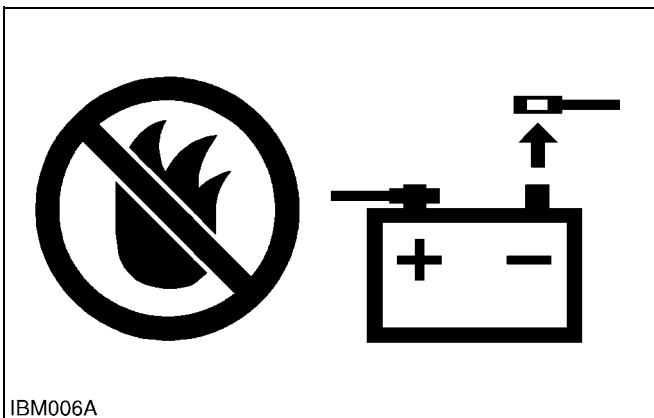
IBM003A



IBM004A



IBM005A



IBM006A

OPERATE SAFELY

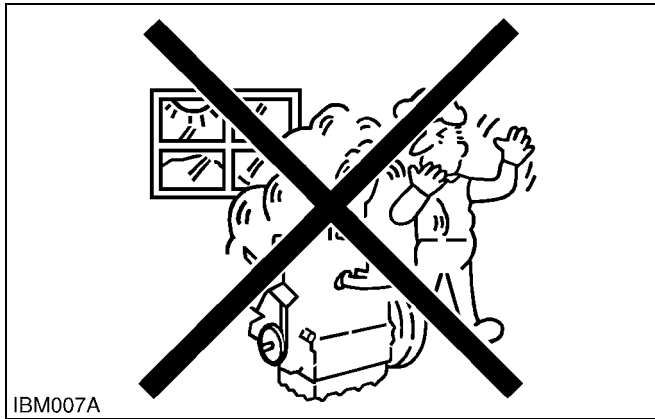
- Do not use the machine after you consume alcohol or medication or when you are tired.
- Put on applicable clothing and safety equipment.
- Use applicable tools only. Do not use alternative tools or parts.
- When 2 or more persons do servicing, make sure that you do it safely.
- Do not operate below the machine that only a jack holds. Always use a safety stand to hold the machine.
- Do not touch the hot parts or parts that turn when the engine operates.
- Do not remove the radiator cap when the engine operates, or immediately after it stops. If not, hot water can spout out from the radiator. Only remove the radiator cap when it is at a sufficiently low temperature to touch with bare hands. Slowly loosen the cap to release the pressure before you remove it fully.
- Released fluid (fuel or hydraulic oil) under pressure can cause damage to the skin and cause serious injury. Release the pressure before you disconnect hydraulic or fuel lines. Tighten all connections before you apply the pressure.
- Do not open a fuel system under high pressure. The fluid under high pressure that stays in fuel lines can cause serious injury. Do not disconnect or repair the fuel lines, sensors, or any other components between the fuel pump and injectors on engines with a common rail fuel system under high pressure.
- Put on an applicable ear protective device (earmuffs or earplugs) to prevent injury against loud noises.
- Be careful about electric shock. The engine generates a high voltage of more than DC100 V in the ECU and is applied to the injector.

WSM000001INI0012US0

PREVENT A FIRE

- Fuel is very flammable and explosive under some conditions. Do not smoke or let flames or sparks in your work area.
- To prevent sparks from an accidental short circuit, always disconnect the battery negative cable first and connect it last.
- The battery gas can cause an explosion. Keep the sparks and open flame away from the top of battery, especially when you charge the battery.
- Make sure that you do not spill fuel on the engine.

WSM000001INI0005US0



IBM007A

KEEP A GOOD AIRFLOW IN THE WORK AREA

- If the engine is in operation, make sure that the area has good airflow. Do not operate the engine in a closed area. The exhaust gas contains poisonous carbon monoxide.

WSM000001INI0006US0

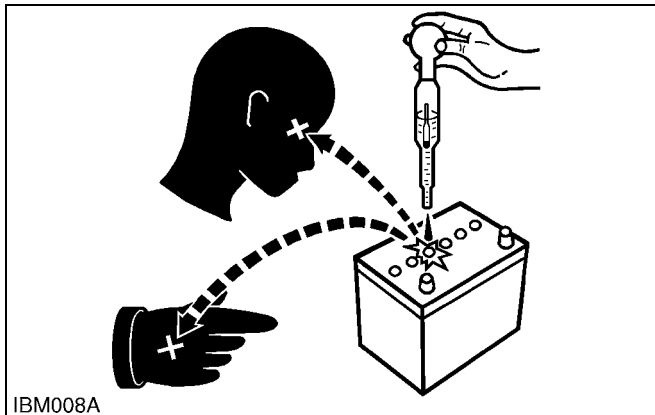


IBM009A

DISCARD FLUIDS CORRECTLY

- Do not discard fluids on the ground, down the drain, into a stream, pond, or lake. Obey related environmental protection regulations when you discard oil, fuel, coolant, electrolyte and other dangerous waste.

WSM000001INI0007US0

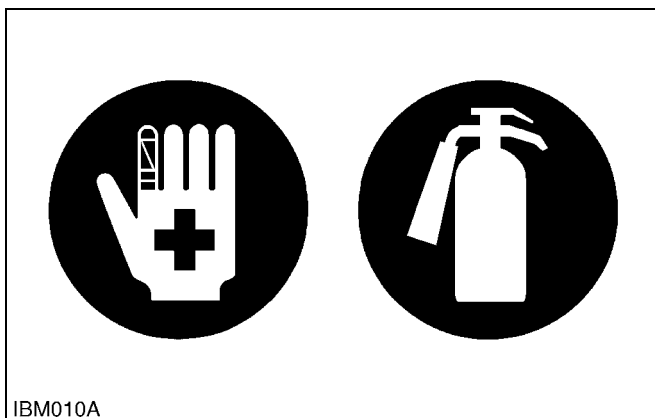


IBM008A

PREVENT ACID BURNS

- Keep electrolyte away from your eyes, hands and clothing. Sulfuric acid in battery electrolyte is poisonous and it can burn your skin and clothing and cause blindness. If you spill electrolyte on yourself, clean yourself with water, and get medical aid immediately.

WSM000001INI0008US0



IBM010A

PREPARE FOR EMERGENCIES

- Keep a first aid kit and fire extinguisher ready at all times.
- Keep the emergency contact telephone numbers near your telephone at all times.

WSM000001INI0009US0

2. SAFETY DECALS

[1] DANGER, WARNING AND CAUTION LABELS

(1) For North America Model

The following safety decals are installed on the machine. If a decal becomes damaged, illegible or is not on the machine, replace it. The decal part number is listed in the parts list.

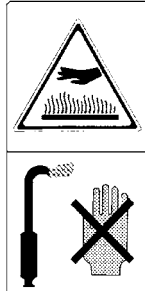
WSM000001INI0013US0

- (1) Part No. TA040-4957-1
Do not get your hands close to engine fan and fan belt.



1AGAIAZAP110A

- (2) Part No. 3N300-4958-1
Do not touch hot surface like muffler, etc.



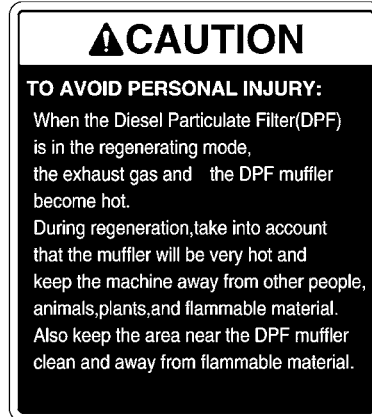
1AGAIAZAP071A

- (3) Part No. 3N600-4958-1
Do not touch hot surface like supply pump, etc.

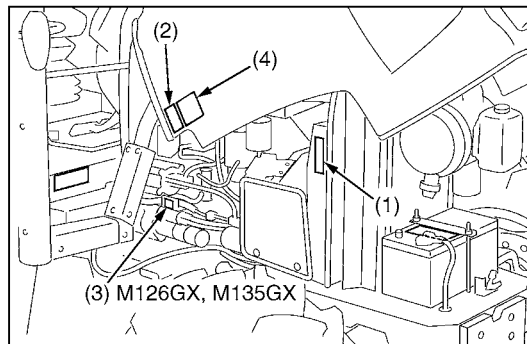
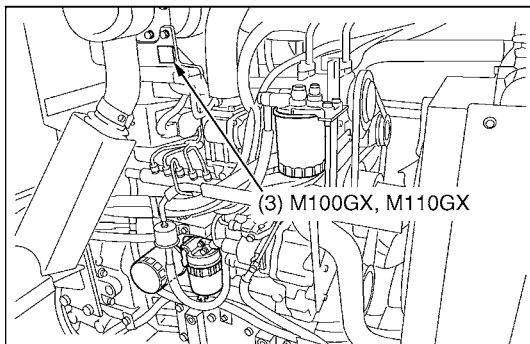
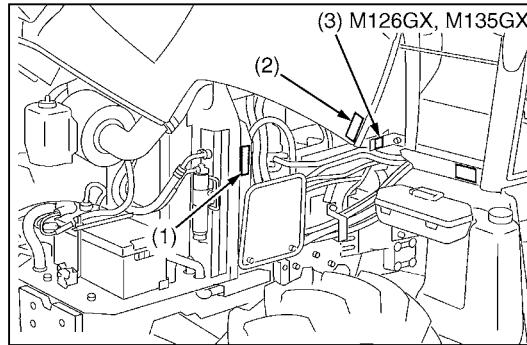
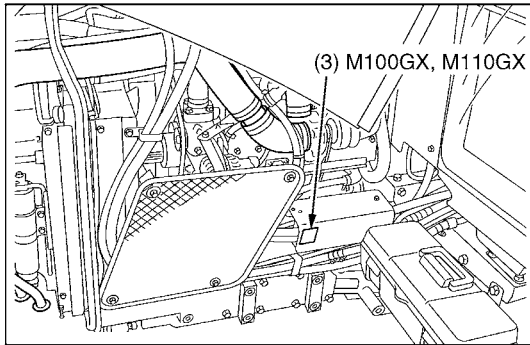


1AGAIDXAP073A

- (4) Part No. 3Y205-9868-1




1AGAIJNAP149A



9Y1210684IC1001US

9Y1210684INI0001US0

(1) Part No. 3Y205-9835-1




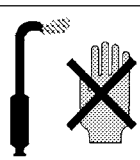
⚠ DANGER

TO AVOID POSSIBLE INJURY OR DEATH FROM A MACHINE RUNAWAY.

1. Do not start engine by shorting across starter terminals or bypassing the safety start switch. Machine may start in gear and move if normal starting circuitry is bypassed.
2. Start engine only from operator's seat with transmission and PTO OFF. Never start engine while standing on the ground.

1AGAIJNAP153A

(3) Part No. 32310-4958-1
Do not touch hot surface like muffler, etc.






1AGAIAZAP071A

(2) Part No. TC420-4956-1

Diesel fuel only

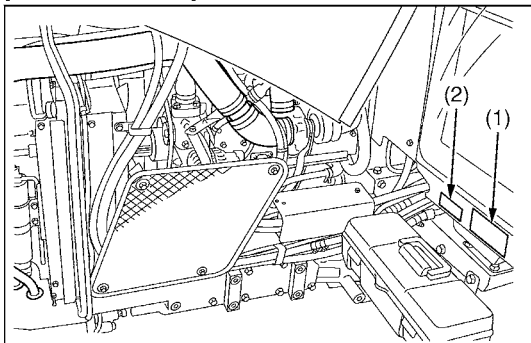
No fire

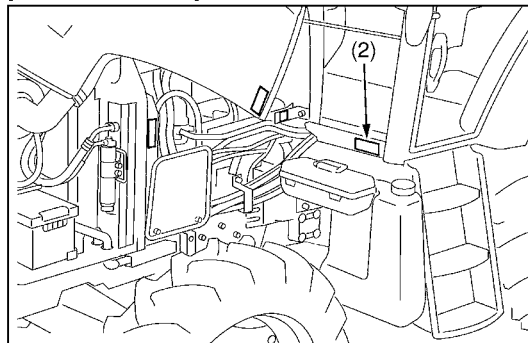
ULTRA LOW SULFUR DIESEL FUEL ONLY

1AGAIHAP154E

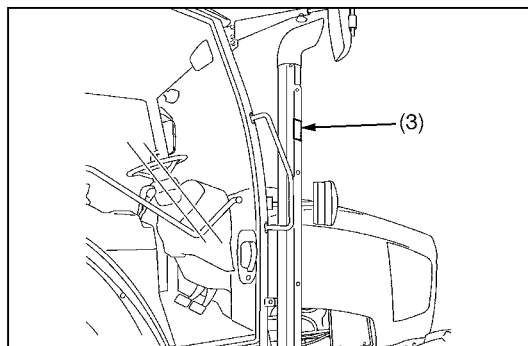
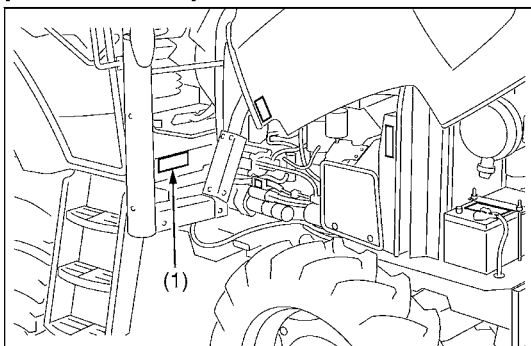
[M100GX, M110GX]



[M126GX, M135GX]



[M126GX, M135GX]



9Y1210684ICI002US

9Y1210684INI0002US0

(1) Part No. 3F240-9836-2

CAUTION


TO AVOID PERSONAL INJURY:

1. Read and understand the operator's manual before operation.
2. Before starting the engine, make sure that everyone is at a safe distance from tractor and the PTO is off.
3. Do not allow passengers on the tractor at any time.
4. Before allowing other people to use the tractor, have them read the operator's manual.
5. Check the tightness of nuts and bolts regularly.
6. Keep all shields in place and stay away from all moving parts.
7. Lock the two brake pedals together before driving on the road.
8. Slow down for turns, or rough roads, or when applying individual brakes.
9. On public roads use SMV emblem and hazard lights, if required by local traffic and safety regulations.
10. Pull only from the drawbar.
11. Before dismounting, lower the implement to the ground, set the parking brake, stop the engine and remove the key.
12. Securely support tractor and implements before working underneath.

1AGAICHAP113A

(2) Part No. 3Y205-9832-2

WARNING



BEFORE DISMOUNTING TRACTOR:

1. **ALWAYS SET PARKING BRAKE.**
Leaving transmission in gear with the engine stopped will not prevent tractor from rolling.
2. **PARK ON LEVEL GROUND WHENEVER POSSIBLE.**
If parking on a slope, position tractor across the slope.
3. **LOWER ALL IMPLEMENTS TO THE GROUND.**
Failure to comply to this warning may allow the wheels to slip, and could cause injury or death.
4. **STOP THE ENGINE.**

1AGAIJNAP151A

(3) Part No. 3Y205-9831-1

WARNING

TO AVOID FREE WHEELING WHEN SHIFTING THE SHUTTLE LEVER WHILE ON A SLOPE:
Stop completely by using the brake and by depressing the clutch pedal.
Start off after selecting shuttle direction by releasing the clutch pedal.

WARNING



TO AVOID INJURY OR DEATH FROM ROLL-OVER:
Always use seat belt when driving.

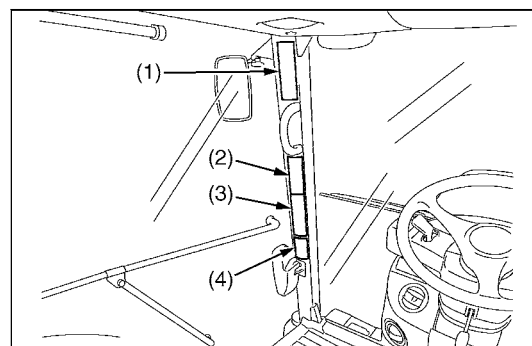
1AGAIJNAP150A

(4) Part No. 3Y205-9778-1
[If optional instructional seat is installed]

CAUTION

- Instructional seat is provided only for training and instructing operators or diagnosing machine problems.
- It is not intended to carry children nor any other person for any other purpose.
- Always wear your seat belt and stabilize your body by holding the handrail on the CAB frame.
- Use caution to avoid the risks of obstructing operator's view, falling from the machine and interfering with controls.

1AGAIJNAP157A



(1) Part No. 3Y565-9855-1 [Front suspension type]

⚠ CAUTION
TO AVOID PERSONAL INJURY:
 Before operating the switches for the front suspension, make sure the area near the machine is clear of all persons and objects.

1AGAIJNAP154A

(3) Part No. 3F240-4966-1

⚠ CAUTION
USE [UP-DOWN] ONLY ON FARM FIELDS. FOR ALL OTHER APPLICATIONS, USE HYDRAULIC LEVER TO MOVE ATTACHMENT.

1AGAIBIAP1800

(2) Part No. 3Y205-9833-1

⚠ WARNING
TO AVOID MACHINE RUNAWAY DUE TO 4WD BRAKING SYSTEM:
 Do not run engine with only rear wheels off ground.

⚠ WARNING



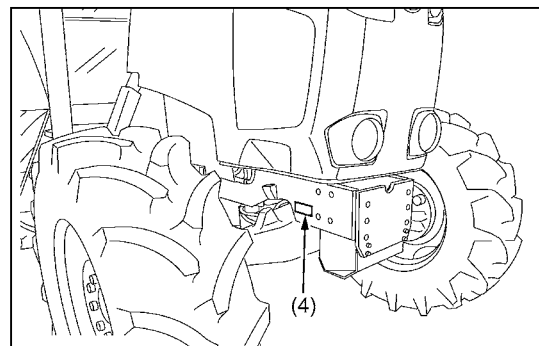
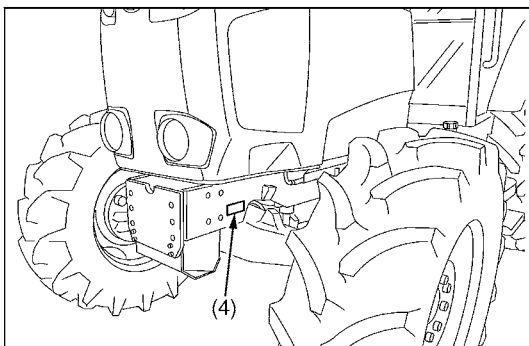
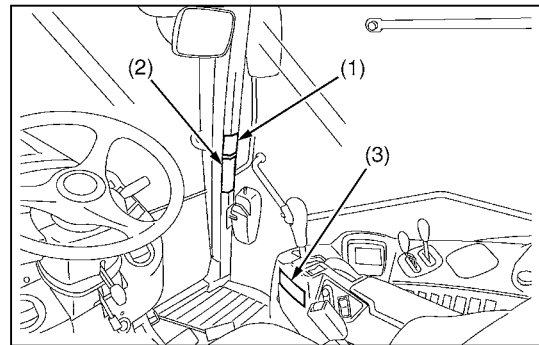
TO AVOID PERSONAL INJURY:
 Use "Bi-Speed Turn" only in low gears and slow speed. Do not use "Bi-Speed Turn" in high gears or road speed.

1AGAIJNAP152A

(4) Part No. 3T565-9859-2 [Front suspension type]

⚠ CAUTION
TO AVOID PERSONAL INJURY:
 Servicing of front suspension hydraulic system should be performed only by authorized Kubota dealer.

1AGAIHFAP087A



9Y1210684ICI004US

9Y1210684INI0004US0

(1) Part No. 3Y205-9892-1

⚠ DANGER/POISON

<p>SHIELD EYES. EXPLOSIVE GASES CAN CAUSE BLINDNESS OR INJURY.</p>	<p>NO SPARKS, FLAMES, SMOKING</p>	<p>SULFURIC ACID CAN CAUSE BLINDNESS OR SEVERE BURNS.</p>
--	-----------------------------------	---

KEEP OUT OF REACH OF CHILDREN. DO NOT TIP. DO NOT OPEN BATTERY.

FLUSH EYES IMMEDIATELY WITH WATER. GET MEDICAL HELP FAST.

PROPOSITION 65 WARNING
 BATTERY POSTS, TERMINALS, AND RELATED ACCESSORIES CONTAIN LEAD AND LEAD COMPOUNDS, CHEMICALS KNOWN TO THE STATE OF CALIFORNIA TO CAUSE CANCER AND REPRODUCTIVE HARM. WASH HANDS AFTER HANDLING.

105E41R 12V	
AMP. HR (5HR)	80
AMP. HR (20HR)	100
RESERVE CAPACITY (MIN)	160
BCI CCA	900
EN CCA	800

S.O.C. INDICATOR: ON CHARGE REPLACE BATTERY

Pb

DK 85330

1AGAIJHAP083A

(2) Part No. 3P903-9892-3

⚠ DANGER / POISON

<p>SHIELD EYES. EXPLOSIVE GASES CAN CAUSE BLINDNESS OR INJURY.</p>	<p>NO SPARKS, FLAMES, SMOKING</p>	<p>SULFURIC ACID CAN CAUSE BLINDNESS OR SEVERE BURNS.</p>
--	-----------------------------------	---

KEEP OUT OF REACH OF CHILDREN. DO NOT TIP. DO NOT OPEN BATTERY.

FLUSH EYES IMMEDIATELY WITH WATER. GET MEDICAL HELP FAST.

PROPOSITION 65 WARNING
 BATTERY POSTS, TERMINALS, AND RELATED ACCESSORIES CONTAIN LEAD AND LEAD COMPOUNDS, CHEMICALS KNOWN TO THE STATE OF CALIFORNIA TO CAUSE CANCER AND REPRODUCTIVE HARM. WASH HANDS AFTER HANDLING.

180G51(4D-1050)	12V	160Ah(20HR)
RC 300(MIN)	1090CCA (SAE)	950CCA (EN)

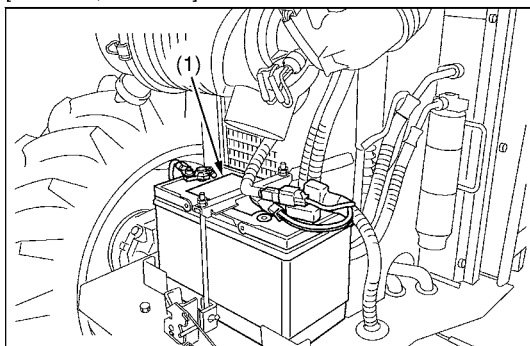
S.O.C. INDICATOR: ON CHARGE REPLACE BATTERY

Pb

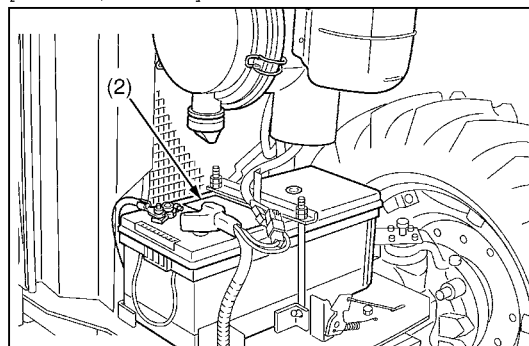
DK 85491

1AGAIJNAP148A

[M100GX, M110GX]



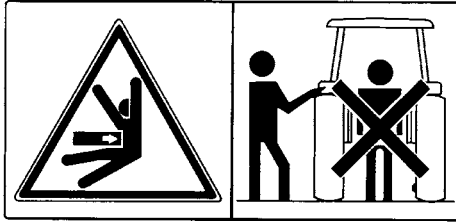
[M126GX, M135GX]



9Y1210684IC1005US

9Y1210684INI0005US0

- (1) Part No. 3F240-9819-1
Do not stand by IMPLEMENT or between implement and tractor while operating remote hitch switch.



1AGAIBIAP1770

- (3) Part No. 6C200-4959-1

⚠ WARNING	TO AVOID PERSONAL INJURY: 1. Attach pulled or towed loads to the drawbar only. 2. Use the 3-point hitch only with equipment designed for 3-point hitch usage.
	⚠ WARNING TO AVOID PERSONAL INJURY: 1. Keep PTO shield in place at all times. 2. Do not operate the PTO at speeds faster than the speed recommended by the implement manufacturer. 3. For trailing PTO-driven implements, set drawbar at towing position. (see operator's manual)

1AGAIHFAP067A

- (2) Part No. 3P305-9856-1

⚠ CAUTION	
TO AVOID INJURY FROM SEPARATION:	
GROOVE LH	GROOVE RH
DO NOT EXTEND LIFT ROD BEYOND THE GROOVE ON THE THREADED ROD.	

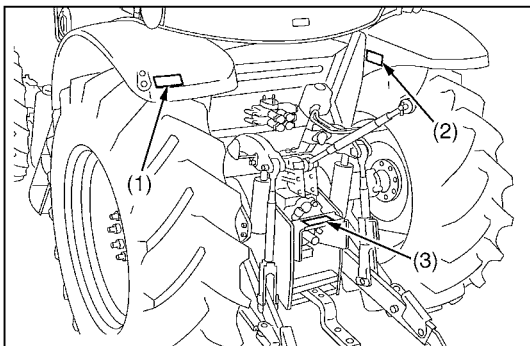
1AGAICVAP048E

- (4) Part No. 1J574-8721-1

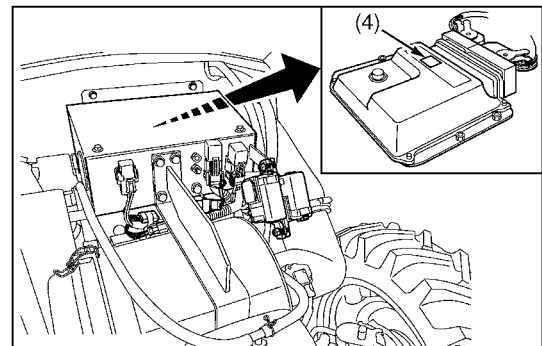


1AGAIJNAP165A

To avoid electric shock; Set the key switch to the "OFF" position before checking or repairing the computer, wiring or/and connectors.



9Y1210684ICI006US



9Y1210684INI0006US0

CARE OF DANGER, WARNING AND CAUTION LABELS

1. Keep danger, warning and caution labels clean and free from obstructing material.
2. Clean danger, warning and caution labels with soap and water, dry with a soft cloth.
3. Replace damaged or missing danger, warning and caution labels with new labels.
4. If a component with danger, warning and caution label(s) affixed is replaced with new part, make sure new label(s) is (are) attached in the same location(s) as the replace component.
5. Mount new danger, warning and caution labels by applying on a clean dry surface and pressing any bubbles to outside edge.

9Y1210684INI0007US0

(2) For Oceania Model

The following safety decals are installed on the machine. If a decal becomes damaged, illegible or is not on the machine, replace it. The decal part number is listed in the parts list.

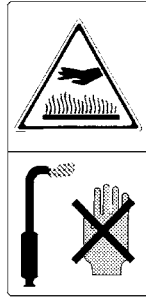
WSM000001INI0013US0

- (1) Part No. TA040-4957-1
Do not get your hands close to engine fan and fan belt.



1AGAIAZAP110A

- (2) Part No. 3N300-4958-1
Do not touch hot surface like muffler, etc.



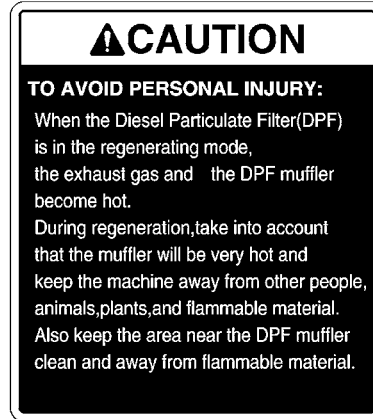
1AGAIAZAP071A

- (3) Part No. 3N600-4958-1
Do not touch hot surface like supply pump, etc.

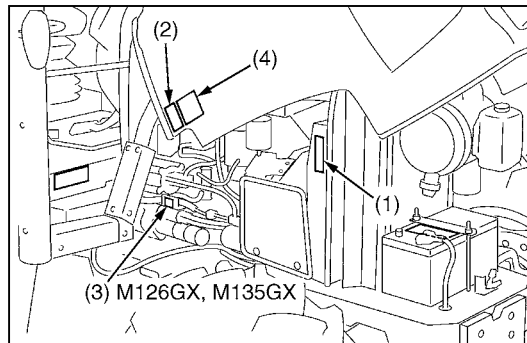
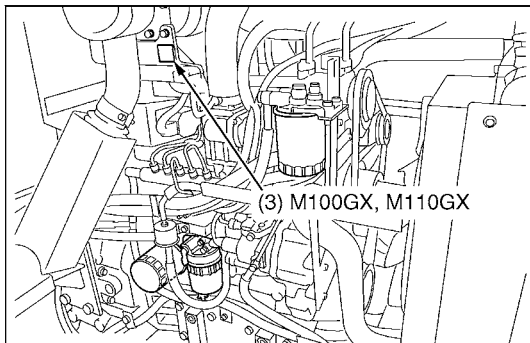
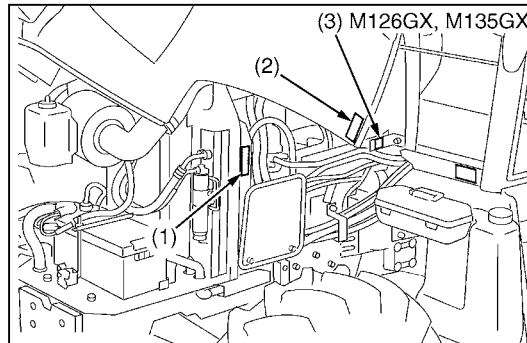
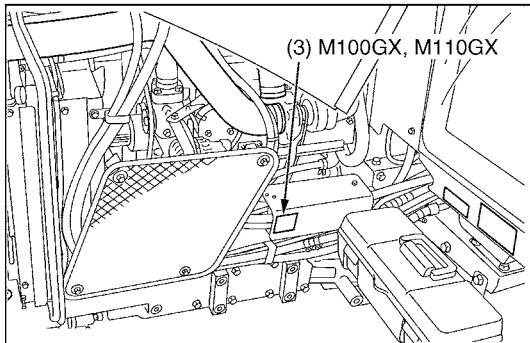


1AGAIDXAP073A

- (4) Part No. 3Y205-9868-1




1AGAIJNAP149A



9Y1210684IC1012US

9Y1210684INI0021US0

(1) Part No. 3Y205-9835-1



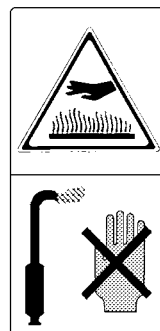
⚠ DANGER

TO AVOID POSSIBLE INJURY OR DEATH FROM A MACHINE RUNAWAY.

1. Do not start engine by shorting across starter terminals or bypassing the safety start switch. Machine may start in gear and move if normal starting circuitry is bypassed.
2. Start engine only from operator's seat with transmission and PTO OFF. Never start engine while standing on the ground.

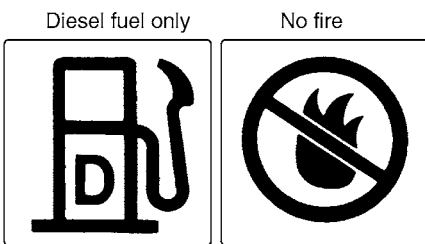
1AGAIJNAP153A

(3) Part No. 32310-4958-1
Do not touch hot surface like muffler, etc.



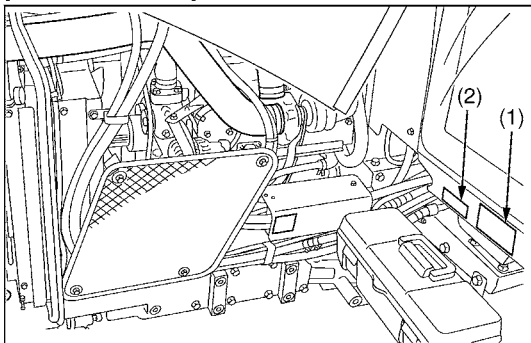
1AGAIAP071A

(2) Part No. TA040-4956-2

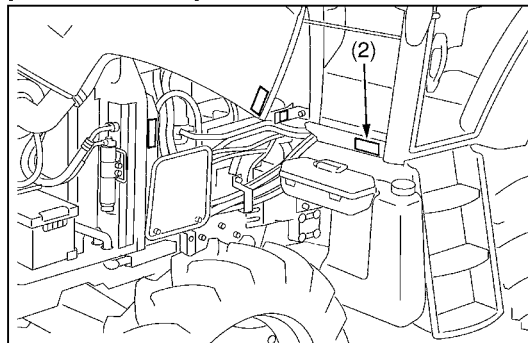


1AGAMAAAP3840

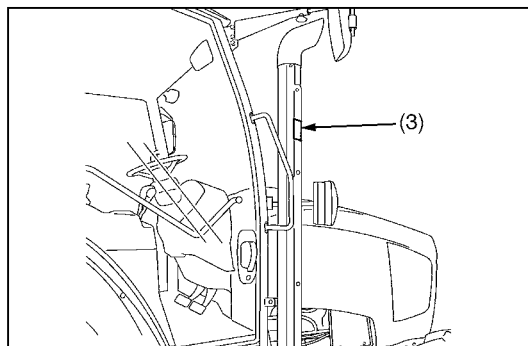
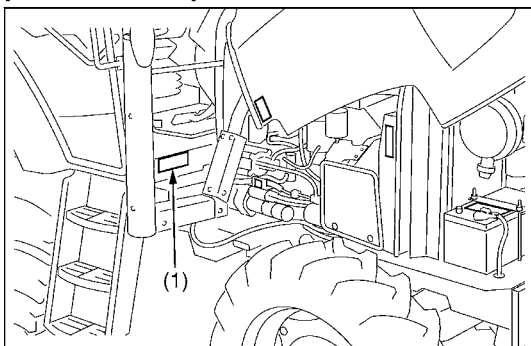
[M100GX, M110GX]



[M126GX, M135GX]



[M126GX, M135GX]



9Y1210684ICI013US

9Y1210684INI0022US0

(1) Part No. 3F240-9836-2

CAUTION

TO AVOID PERSONAL INJURY:

1. Read and understand the operator's manual before operation.
2. Before starting the engine, make sure that everyone is at a safe distance from tractor and the PTO is off.
3. Do not allow passengers on the tractor at any time.
4. Before allowing other people to use the tractor, have them read the operator's manual.
5. Check the tightness of nuts and bolts regularly.
6. Keep all shields in place and stay away from all moving parts.
7. Lock the two brake pedals together before driving on the road.
8. Slow down for turns, or rough roads, or when applying individual brakes.
9. On public roads use SMV emblem and hazard lights, if required by local traffic and safety regulations.
10. Pull only from the drawbar.
11. Before dismounting, lower the implement to the ground, set the parking brake, stop the engine and remove the key.
12. Securely support tractor and implements before working underneath.

1AGAICHAP113A

(2) Part No. 3Y205-9832-2

WARNING



BEFORE DISMOUNTING TRACTOR:

1. **ALWAYS SET PARKING BRAKE.**
Leaving transmission in gear with the engine stopped will not prevent tractor from rolling.
2. **PARK ON LEVEL GROUND WHENEVER POSSIBLE.**
If parking on a slope, position tractor across the slope.
3. **LOWER ALL IMPLEMENTS TO THE GROUND.**
Failure to comply to this warning may allow the wheels to slip, and could cause injury or death.
4. **STOP THE ENGINE.**

1AGAIJNAP151A

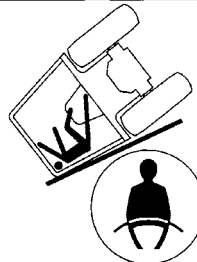
(3) Part No. 3Y205-9831-1

WARNING

TO AVOID FREE WHEELING WHEN SHIFTING THE SHUTTLE LEVER WHILE ON A SLOPE:

Stop completely by using the brake and by depressing the clutch pedal.
Start off after selecting shuttle direction by releasing the clutch pedal.

WARNING



TO AVOID INJURY OR DEATH FROM ROLL-OVER:

Always use seat belt when driving.

1AGAIJNAP150A

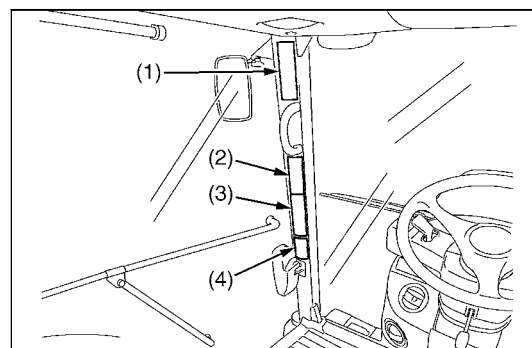
(4) Part No. 3Y205-9778-1

[If optional instructional seat is installed]

CAUTION

- Instructional seat is provided only for training and instructing operators or diagnosing machine problems.
- It is not intended to carry children nor any other person for any other purpose.
- Always wear your seat belt and stabilize your body by holding the handrail on the CAB frame.
- Use caution to avoid the risks of obstructing operator's view, falling from the machine and interfering with controls.

1AGAIJNAP157A



9Y1210684ICI014US

9Y1210684INI0023US0

(1) Part No. 3Y565-9855-1 [Front suspension type]

⚠ CAUTION
TO AVOID PERSONAL INJURY:
 Before operating the switches for the front suspension, make sure the area near the machine is clear of all persons and objects.

1AGAIJNAP154A

(3) Part No. 3F240-4966-1

⚠ CAUTION
USE [UP-DOWN] ONLY ON FARM FIELDS. FOR ALL OTHER APPLICATIONS, USE HYDRAULIC LEVER TO MOVE ATTACHMENT.

1AGAIBIAP1800

(2) Part No. 3Y205-9833-1

⚠ WARNING
TO AVOID MACHINE RUNAWAY DUE TO 4WD BRAKING SYSTEM:
 Do not run engine with only rear wheels off ground.

⚠ WARNING



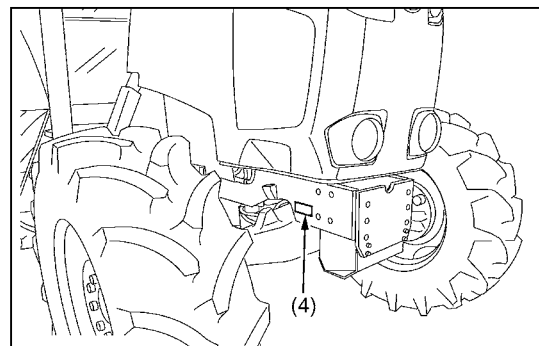
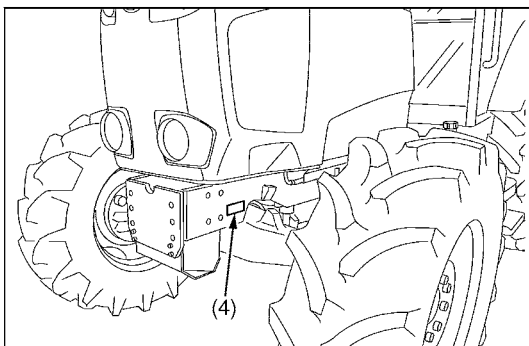
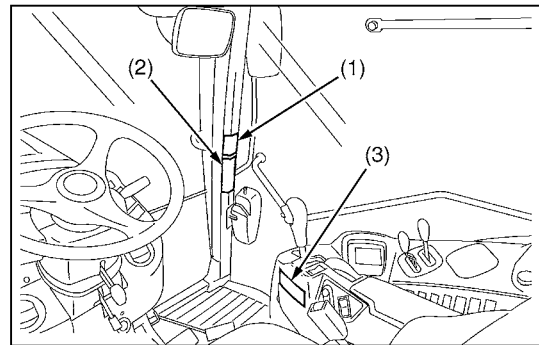
TO AVOID PERSONAL INJURY:
 Use "Bi-Speed Turn" only in low gears and slow speed. Do not use "Bi-Speed Turn" in high gears or road speed.

1AGAIJNAP152A

(4) Part No. 3T565-9859-2 [Front suspension type]

⚠ CAUTION
TO AVOID PERSONAL INJURY:
 Servicing of front suspension hydraulic system should be performed only by authorized Kubota dealer.

1AGAIHFAP087A



9Y1210684ICI015US

9Y1210684INI0024US0

Thanks for your reading.

Please click here to download complete manual instantly.

And can also choose other manuals.

Feel free --->write to me with any questions.

Our service email:

manuals007@hotmail.com