

編 番
PART NO.
EP42D-1-1

PARTS CATALOG パーツカタログ

LX150-2 Wheel Loader

EXPORT
海外向

適用号機
Serial No. 02101~

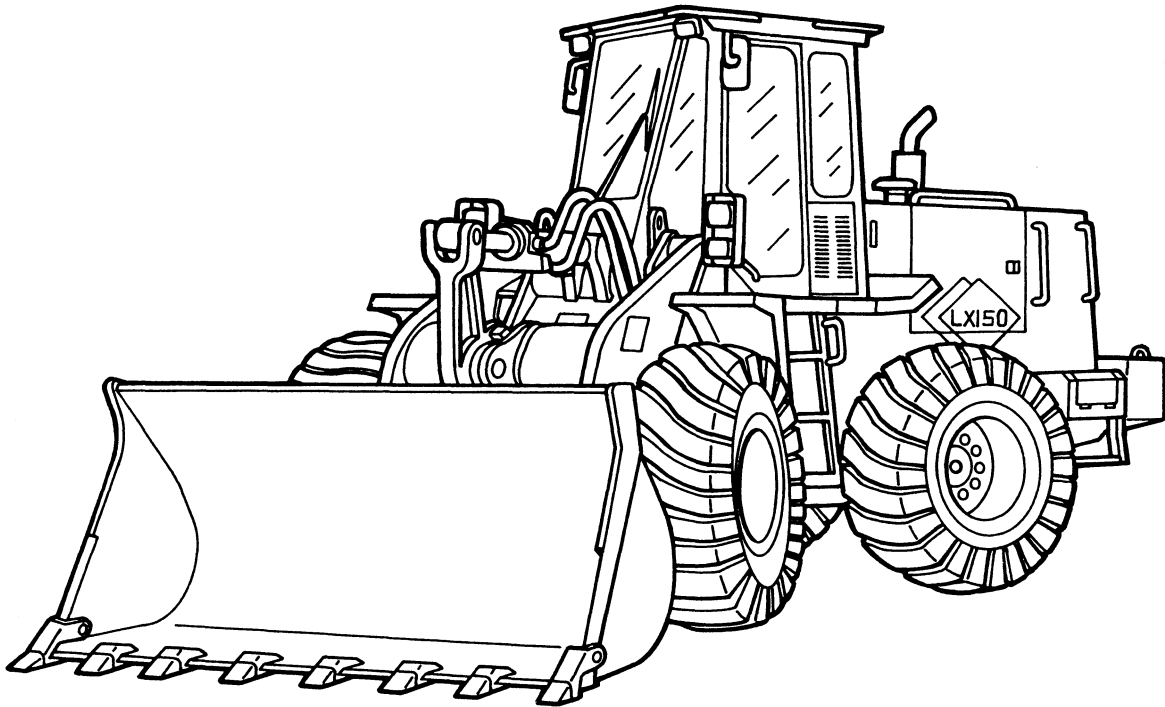
HITACHI

1A01

LX150 LOADER

INTRODUCTION AND CUSTOMER INFORMATION

TP33751



LEFT SIDE VIEW OF HITACHI LX150 LOADER
(MANUFACTURED 1992-)

TO THE CUSTOMER

THE PART NUMBERS IN THIS PARTS CATALOG WERE CORRECT AT THE TIME YOUR CATALOG WAS PUBLISHED. IT IS OUR POLICY TO CONSTANTLY IMPROVE OUR MACHINES, AND, THEREFORE, PART NUMBERS MAY CHANGE. WHEN ORDERING PARTS, VERIFY PART NUMBERS THROUGH YOUR DEALER'S MICROFICHE WHICH IS UP-TO-DATE.

(SPECIFICATIONS AND DESIGN SUBJECT TO CHANGE WITHOUT NOTICE)

SERIAL NUMBER LOCATION

EACH LX150 LOADER MAY HAVE EIGHT SERIAL NUMBER PLATES: ONE FOR THE MANUFACTURING NUMBER, ONE FOR THE PRODUCT IDENTIFICATION NUMBER, ONE FOR THE TRANSMISSION, ONE FOR THE HYDRAULIC PUMP, ONE FOR THE ENGINE SERIAL NUMBER PLATE AND ONE FOR THE CAB OR CANOPY.

THE PRODUCT IDENTIFICATION NUMBER PLATE IS LOCATED ON THE LEFT-HAND SIDE OF THE ENGINE FRAME TO THE RIGHT OF THE TOP STEP.

THE MANUFACTURING NUMBER PLATE IS LOCATED ON LEFT HAND CONSOLE FRONT SURFACE.

THE TRANSMISSION SERIAL NUMBER PLATE IS LOCATED ON THE LOWER RIGHT-HAND SIDE OF THE TRANSMISSION CASE.

THE HYDRAULIC PUMP SERIAL NUMBER PLATE IS LOCATED ON THE HYDRAULIC PUMP.

THE ENGINE SERIAL NUMBER PLATE IS LOCATED ON THE LEFT SIDE OF THE ENGINE NEAR THE ENGINE OIL FILTER.

THE CAB SERIAL NUMBER PLATE IS LOCATED INSIDE THE OPERATOR'S STATION ON THE HORIZONTAL CROSS TUBE BEHIND THE SEAT.

THE CANOPY SERIAL NUMBER PLATE IS LOCATED INSIDE THE OPERATOR'S STATION ON THE HORIZONTAL CROSS TUBE BEHIND THE SEAT.

THE AXLE SERIAL NUMBER PLATE IS LOCATED ON THE INPUT SIDE OF THE DIFFERENTIAL CASE.

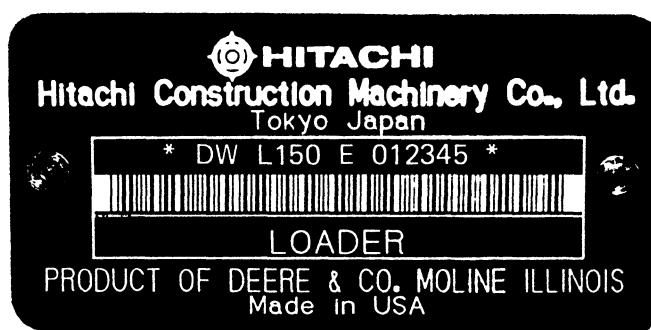
LEFT SIDE AND RIGHT SIDE, FRONT AND REAR OF THE LOADER ARE VIEWED BY FACING IN THE DIRECTION OF LOADER FORWARD TRAVEL.

WHENEVER SERIAL NUMBERS ARE REQUIRED ON WARRANTY CLAIMS OR CORRESPONDENCE PERTAINING TO THIS PRODUCT, IT IS EXTREMELY IMPORTANT THAT ALL CHARACTERS BE FURNISHED. THIS POINT CANNOT BE OVEREMPHASIZED.

1A03

LX150 LOADER

PRODUCT IDENTIFICATION NUMBER PLATE



1 2
* DW L150 E 012345 *

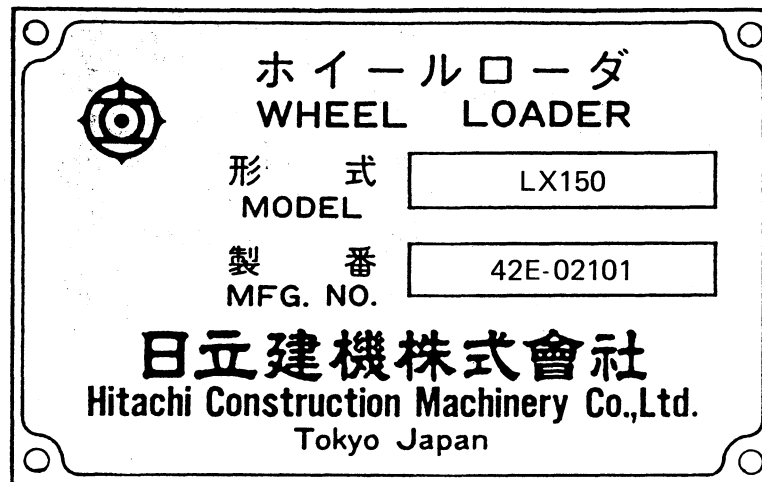
1. MODEL NAME

L150 : LX150

2. SERIAL NUMBER FOR PART IDENTIFICATION

PLEASE USE THESE NUMBER AS SERIAL NUMBER ONLY TO
IDENTIFY EFFECTIVE PARTS.

MANUFACTURING NUMBER PLATE



1. MODEL NAME

LX150

2. MFG. NO.

LX150 : 42E - 02101~

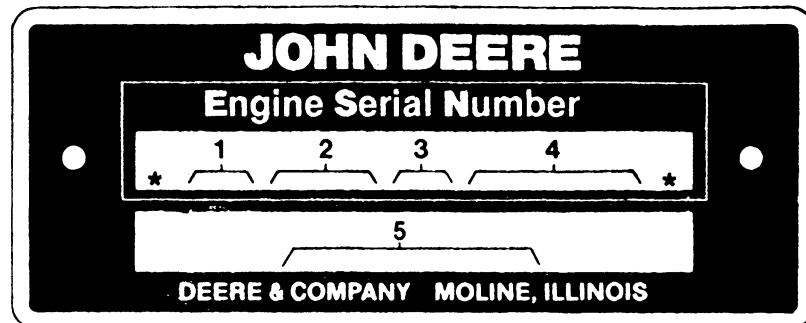
NOTICE: GENERALLY, CALLED SERIAL NUMBER INDICATE THIS MFG. NO.

1A05

LX150 LOADER

ENGINE SERIAL NUMBER

TP8011



TP8011

1. DESIGNATES ENGINE MANUFACTURER.
2. DESIGNATES NUMBER OF CYLINDERS AND DISPLACEMENT.
3. DESIGNATES FUEL TYPE OR SPECIAL CONDITION
4. DESIGNATES ENGINE SERIAL NUMBER
5. DESIGNATES THE ENGINE APPLICATION AND FACTORY USER.

RG-JOHN DEERE ENGINE WORKS
6076 (7.6 LITER)

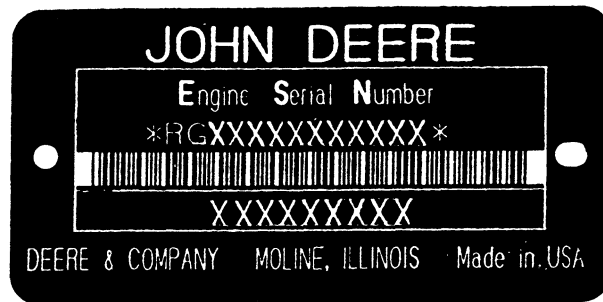
T-TURBOCHARGED-A-AFTERCOOLED DIESEL
123456
6076ADW 30 (LX150)

1A06

LX150 LOADER

SHORT BLOCK SERIAL NUMBER PLATE

RGP3513



RGP3513

THE REPLACEMENT SHORT BLOCK ASSEMBLY HAS A SERIAL NUMBER PLATE ATTACHED. THE ORIGINAL ENGINE SERIAL NUMBER MUST BE STAMPED ONTO THE NEW PLATE IN THE BLANK SPACE PROVIDED, AS A REFERENCE FOR YOUR DEALER. THE PLATE CAN BE ATTACHED WITH(2) 37H44 DRIVE SCREWS.

1. DESIGNATES ENGINE MANUFACTURER
2. DESIGNATES REPLACEMENT SHORT BLOCK
3. DESIGNATES LITERS
4. DESIGNATES THE PRODUCTION DATE
5. DESIGNATES COMPONENT SEQUENCE

RG - WATERLOO ENGINE WORKS
SB
XXX- 076 (7.6)
1234
56

1A07

LX150 LOADER

TWO LINE BAR CODED ENGINE SERIAL NUMBER PLATE (LOCATED ON STARTER SIDE OF ENGINE)

RGP3513



RGP3513

RG - WATERLOO ENGINE WORKS

6

076 (7.6 LITERS)

A - TURBOCHARGED AND AFTERCOOLED

T - TURBOCHARGED

H - AIR-TO-AIR

XXXXXX

FIRST LINE

DESIGNATES ENGINE MANUFACTURER.

DESIGNATES NUMBER OF CYLINDERS.

DESIGNATES LITER DISPLACEMENT.

DESIGNATES TYPE OF AIR INTAKE SYSTEM.

DESIGNATES ENGINE SERIAL NUMBER.

SECOND LINE

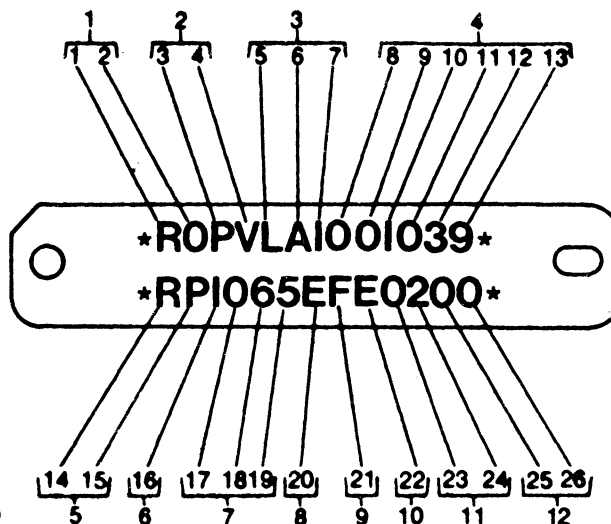
THE FIRST FIVE DIGITS ARE THE SAME AS TWO THRU FOUR FROM ABOVE. THE SIXTH DIGIT THRU THE NINTH DIGIT DESIGNATE THE FACTORY USER AND APPLICATION.

1A08

LX150 LOADER

HYDRAULIC PUMP SERIAL NUMBER

TP8896



1. DIGITS 1 AND 2 DESIGNATE THE PRODUCING UNIT.
2. DIGITS 3 AND 4 DESIGNATE THE PUMP TYPE.
3. DIGITS 5, 6 AND 7 DESIGNATE THE PUMP MODEL NUMBER.
4. DIGITS 8 THROUGH 11 DESIGNATE THE PUMP SERIAL NUMBER.
5. DIGITS 14 AND 15 DESIGNATE THE PUMP DESIGN.
6. DIGITS 16 DESIGNATES THE PUMP CLASSIFICATION.
7. DIGITS 17, 18 AND 19 DESIGNATE THE METRIC DISPLACEMENT PER REVOLUTION.
8. DIGIT 20 DESIGNATES THE PORT ARRANGEMENT ON THE PRIMARY HOUSING.
9. DIGIT 21 DESIGNATES THE PORT ARRANGEMENT ON THE SECONDARY HOUSING.
10. DIGIT 22 DESIGNATES THE PUMP ROTATION.
11. DIGIT 23 AND 24 DESIGNATES THE CONTROL VALVE OPTION.
12. DIGIT 25 AND 26 ARE BLANK.

COMPONENT WORKS
VARIABLE DISPLACEMENT
LA1
000000
RADIAL PUMP
1
065 CM3
E
F
E
02

Please Click Here To Download The Complete Manual
Download Other Manuals
If Having Any Questions Feel Free To Contact us

admin@servicemanualbit.com