

3

1

0

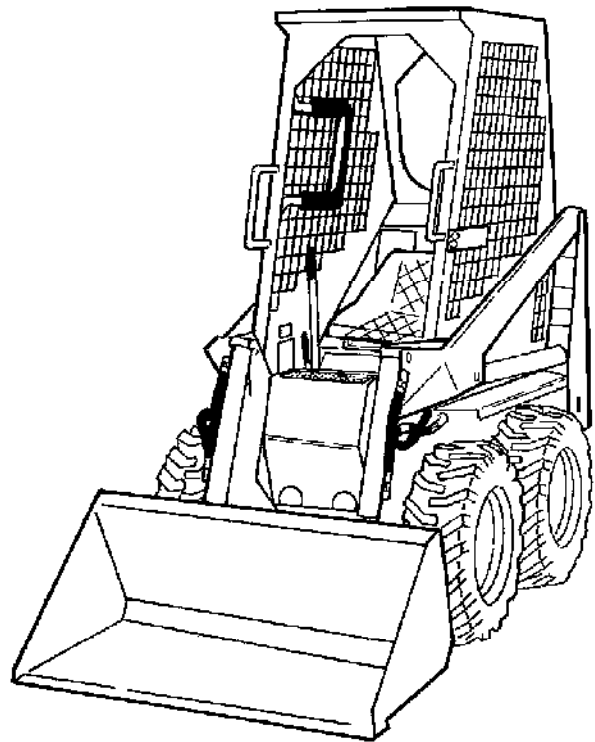
3

1

3



Service Manual



**MELROE
INGERSOLL-RAND**

6556606 (12-82)

Printed in U.S.A.



© Melroe Company 1982

MAINTENANCE SAFETY



WARNING

Instructions are necessary before operating or servicing machine. Read and understand the Operation & Maintenance Manual, Operator's Handbook and signs (decals) on machine. Follow warnings and instructions in the manuals when making repairs, adjustments or servicing. Check for correct function after adjustments, repairs or service. Untrained operators and failure to follow instructions can cause injury or death.

W-2003-0903



Safety Alert Symbol: This symbol with a warning statement, means: "Warning, be alert! Your safety is involved!" Carefully read the message that follows.

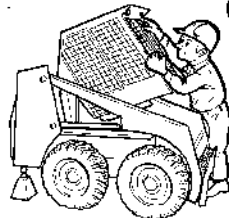
CORRECT



B-10731a

- Never service the Bobcat Skid-Steer Loader without instructions.

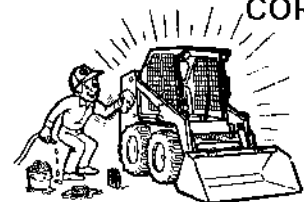
CORRECT



B-12365

- Use the correct procedure to lift or lower operator cab.

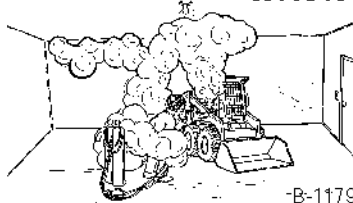
CORRECT



B-7469

- Cleaning and maintenance are required daily.

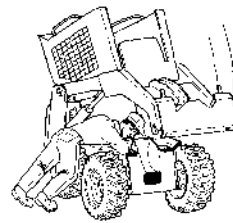
WRONG



B-11799

- Have good ventilation when welding or grinding painted parts.
- Wear dust mask when grinding painted parts. Toxic dust and gas can be produced.
- Avoid exhaust fume leaks which can kill without warning. Exhaust system must be tightly sealed.

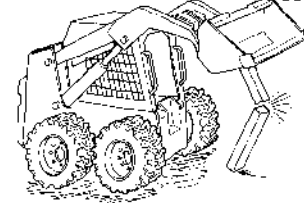
WRONG



B-15231

- Disconnecting or loosening any hydraulic tubeline, hose, fitting, component or a part failure can cause lift arms to drop. Do not go under lift arms when raised unless supported by an approved lift arm support device. Replace it if damaged.

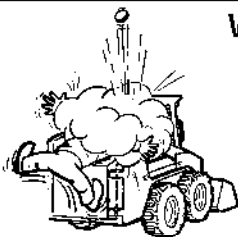
WRONG



B-15280

- Never work on loader with lift arms up unless lift arms are held by an approved lift arm support device. Replace if damaged.
- Never modify equipment or add attachments not approved by Bobcat Company.

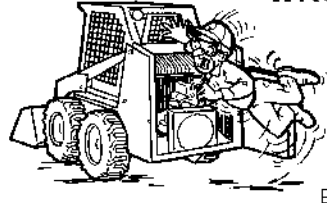
WRONG



B-6590

- Stop, cool and clean engine of flammable materials before checking fluids.
- Never service or adjust loader with the engine running unless instructed to do so in the manual.
- Avoid contact with leaking hydraulic fluid or diesel fuel under pressure. It can penetrate the skin or eyes.
- Never fill fuel tank with engine running, while smoking or when near open flame.

WRONG



B-6580

- Keep body, jewelry and clothing away from moving parts, electrical contact, hot parts and exhaust.
- Wear eye protection to guard from battery acid, compressed springs, fluids under pressure and flying debris when engines are running or tools are used. Use eye protection approved for type of welding.
- Keep rear door closed except for service. Close and latch door before operating the loader.

WRONG



B-6589

- Lead-acid batteries produce flammable and explosive gases.
- Keep arcs, sparks, flames and lighted tobacco away from batteries.
- Batteries contain acid which burns eyes or skin on contact. Wear protective clothing. If acid contacts body, flush well with water. For eye contact flush well and get immediate medical attention.

Maintenance procedures which are given in the Operation & Maintenance Manual can be performed by the owner/operator without any specific technical training. Maintenance procedures which are **not** in the Operation & Maintenance Manual must be performed **ONLY BY QUALIFIED BOBCAT SERVICE PERSONNEL**. Always use **genuine Bobcat replacement parts**. The Service Safety Training Course is available from your Bobcat dealer.

MSW01-0805



FOREWORD

This manual gives instruction for correct servicing and adjustment of the Bobcat, and overhaul instructions of the, hydraulic system, electrical system, engine and general mainframe parts.

Make reference to the Owner's Manual for operating instructions (Starting Procedure, Daily Checks and Maintenance, Bobcat Operation, etc.).

A general inspection of the following items should be made whenever the loader has had service or repair.

1. Check hydraulic fluid level, engine oil level and fuel supply.
2. Inspect for any fuel, oil or hydraulic fluid leaks.
3. Lubricate the loader.
4. Check battery condition, electrolyte level and cables.
5. Inspect air cleaner system for damage or leaks. Check element and replace as needed.
6. Check electrical charging system.
7. Check indicator lamps.
8. Check tires for wear and pressure.
9. Check the Bob-Tach attachment for condition. Inspect the wedges for damage or wear.
10. Inspect safety items for condition (Operator Enclosure, Seat Belt, Safety Treads, Lamps, etc.).
11. Make visual inspection for loose or broken parts or connections.
12. Operate the loader, checking all functions.

Check the above items, if any are in need of repair tell the Owner:

CONTENTS

ALPHABETICAL INDEX	9
DRIVE SYSTEM	3
ELECTRICAL SYSTEM	5
ENGINE 310	6
ENGINE 313	7
HYDRAULIC SYSTEM	2
MAIN FRAME	4
PREVENTIVE MAINTENANCE	1
SPECIFICATIONS	8

PREVENTIVE
MAINTENANCE

HYDRAULIC
SYSTEM

DRIVE
SYSTEM

MAIN
FRAME

ELECTRICAL
SYSTEM

ENGINE
(310)

ENGINE
(313)

TECHNICAL
DATA

ALPHABETICAL
INDEX

Please Click Here To Download The Complete Manual
Download Other Manuals
If Having Any Questions Feel Free To Contact us

admin@servicemanualbit.com