

Document Title: Main dimensions EC15B	Function Group: 000	Information Type: Service Information	Date: 2018/4/13
Profile:			

Main dimensions EC15B

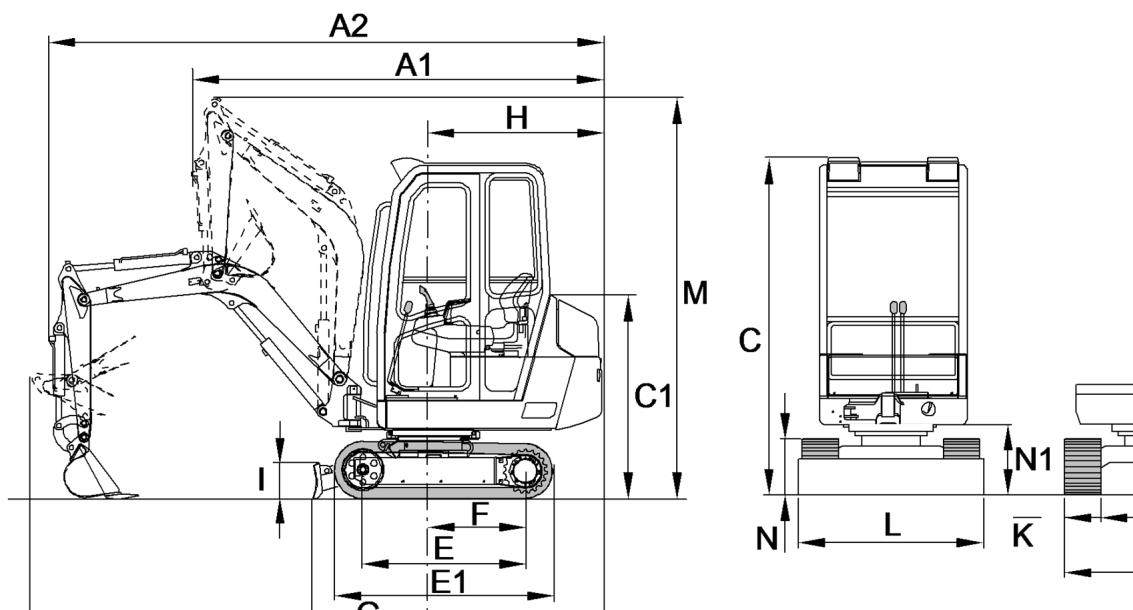


Figure 1
Dimensions of the machine

Machine		Symbol	Unit	XR		XT		XTV	
				Arm: 900	Arm: 1150	Arm: 900	Arm: 1150	Arm: 900	Arm: 1150
Overall height	Dozer blade	I	mm	243		240		243	
	Boom	M	mm	2652		2652		2671	
	Driver's cabin	C	mm	2270		2270		2292	
	Roll over protection structure	C	mm	2210		2210		2234	
	Engine cover	C1	mm	1370		1370		1370	
Ground clearance	Lower frame	D	mm	213		213		162	
	Superstructure	N1	mm	450		450		473	
Overall length		A	mm	3766	3771	3766	3771	3748	3765
Distance between chain sprockets		E	mm	1046		1085		1085	
Overall width	Boom raised	A1	mm	2659	2688	2659	2688	2659	2688
	Boom on Bucket	A2	mm	3649	3560	3649	3560	3665	3569
	Rotation point end of cabin	H	mm	1124		1124		1124	

Machine	XR	XT	XTV
----------------	-----------	-----------	------------

		Symbol	Unit	Arm: 900	Arm: 1150	Arm: 900	Arm: 1150	Arm: 900	Arm: 1150
Lower frame	Floor plate width	K	mm	230		230		230	
	Dozer plate width	L	only dozer blade	mm	980		980		995
			Dozer blade and extension		-		-		1345
	Overall width	B	min.	mm	980		980		986
			max.		1200		-		1336
	Length of track	E1	mm	1418		1467		1467	
	Floor plate height	N	mm	373		397		397	
	Rotation point - dozer blade	G	mm	857		856		876	
Rotation point - centre of sprocket	F	mm	603		620		620		

Document Title: Main dimensions EC20B	Function Group: 000	Information Type: Service Information	Date: 2018/4/13
Profile:			

Main dimensions EC20B

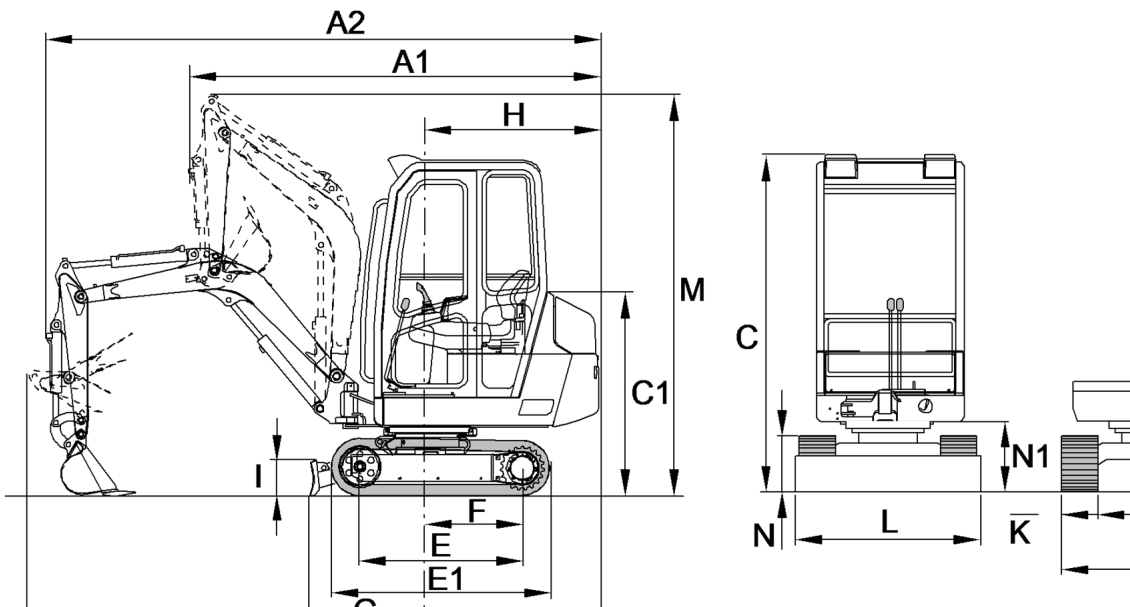


Figure 1
Dimensions of the machine

Machine		Symbol	Unit	XT		XTV	
				Arm: 1050	Arm: 1300	Arm: 1050	Arm: 1300
Overall height	Dozer blade	I	mm	261		242	
	Boom	M	mm	2865		2865	
	Driver's cabin	C	mm	2296		2296	
	Roll over protection structure	C	mm	2223		2223	
	Engine cover	C1	mm	1370		1370	
Ground clearance	Lower frame	D	mm	236		164	
	Superstructure	N1	mm	473		476	
Overall length		A	mm	3947	3974	3947	3974
Distance between chain sprockets		E	mm	1240		1240	
Overall width	Boom raised	A1	mm	2754	2790	2754	2790
	Boom on Bucket	A2	mm	3788	3664	3788	3664
	Rotation point end of cabin	H	mm	1124		1124	

Machine		Symbol	Unit	XT		XTV	
				Arm: 900	Arm: 1150	Arm: 900	Arm: 1150
Lower frame	Floor plate width	K	mm	250		250	
	Dozer plate	L only dozer blade	mm	1200		995	

width		Dozer blade and extension		-	1345
Overall width	B	min.	mm	1200	1006
		max.		-	1356
Length of track		E1	mm	1632	1632
Floor plate height		N	mm	398	398
Rotation point - dozer blade		G	mm	1074	976
Rotation point - centre of sprocket		F	mm	660	660

Document Title: Position of components	Function Group: 000	Information Type: Service Information	Date: 2018/4/13
Profile:			

Position of components

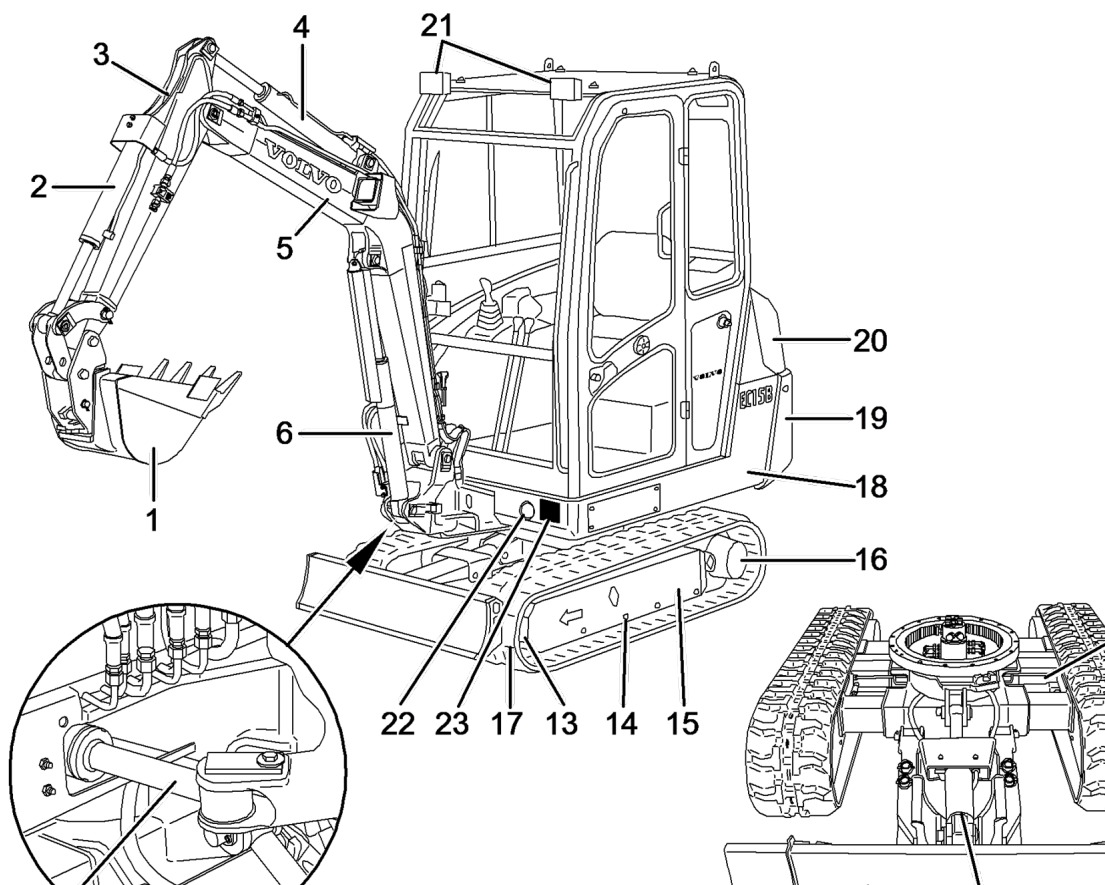


Figure 1
Position of components

- | | |
|---|---------------------------------------|
| 1 Bucket | 13 Tensioning wheel |
| 2 Bucket cylinder | 14 Rollers |
| 3 Dipper, standard version | 15 Main chassis |
| 4 Dipper cylinder | 16 Track sprockets/travel gear motors |
| 5 Boom | 17 Tracks |
| 6 Boom cylinder | 18 Slewing superstructure |
| 7 Dozer blade cylinder | 19 Tilttable counterweight |
| 8 Dozer blade | 20 Engine compartment |
| 9 Dozer blade extension, right (depending on equipment) | 21 Working head lights |
| 10 Dozer blade extension, left (depending on equipment) | 22 Horn |
| 11 Boom offset cylinder | 23 Identification plate |
| 12 Cylinder for track width adjustment (only for version XTV) | |

Document Title: Caution sign - Diesel engine starting procedure	Function Group: 020	Information Type: Service Information	Date: 2018/4/13
Profile:			

Caution sign - Diesel engine starting procedure

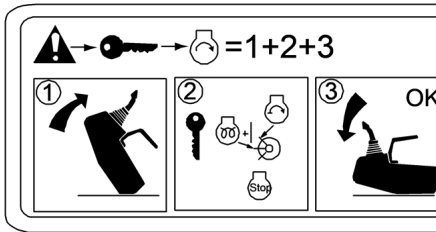


Figure 1

Sticker stuck to the cabin roof inside the cab.
It indicates the starting procedure for the diesel engine.

Document Title: Caution sign - Emergency exit	Function Group: 020	Information Type: Service Information	Date: 2018/4/13
Profile:			

Caution sign - Emergency exit



Figure 1

Sticker stuck to the rear windscreen of the cabin indicating the location of the emergency exit (the window must be smashed with the hammer provided for this purpose and stored inside a support on the rear cabin wall).

Document Title: Caution sign - Lashing	Function Group: 020	Information Type: Service Information	Date: 2018/4/13
Profile:			

Caution sign - Lashing

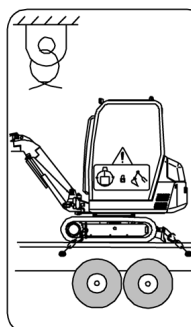


Figure 1

Sticker stuck to the cabin roof inside the cab.
It indicates that only these fastening points must be used.

Document Title: Caution sign - Lifting the machine	Function Group: 020	Information Type: Service Information	Date: 2018/4/13
Profile:			

Caution sign - Lifting the machine

Sticker stuck to the cabin roof inside the cab.

It indicates that only these specific lifting points must be used to lift the machine.

Document Title: Caution sign - Operation and maintenance	Function Group: 020	Information Type: Service Information	Date: 2018/4/13
Profile:			

Caution sign - Operation and maintenance

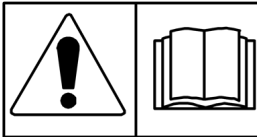


Figure 1

The instructions and warnings in the operating manual must be read carefully before using the machine for the first time. The technical documentation can be found in the storage compartment under the driver's seat.

Document Title: Caution sign - Track tension	Function Group: 020	Information Type: Service Information	Date: 2018/4/13
Profile:			

Caution sign - Track tension

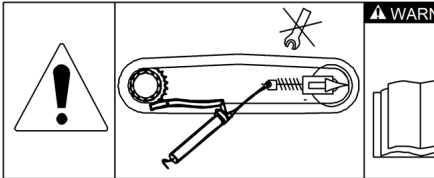


Figure 1

Sticker stuck to the cabin roof inside the cab.
It indicates that the tension of the tracks must be checked every day.

Document Title: Identification of the engine	Function Group: 020	Information Type: Service Information	Date: 2018/4/13
Profile:			

Identification of the engine

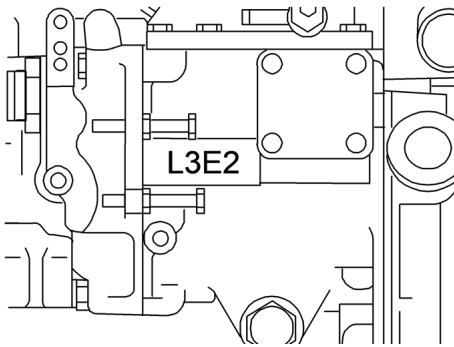


Figure 1

The identification of the engine is stamped on the right hand side of the engine block near the injection pump mounting bracket.

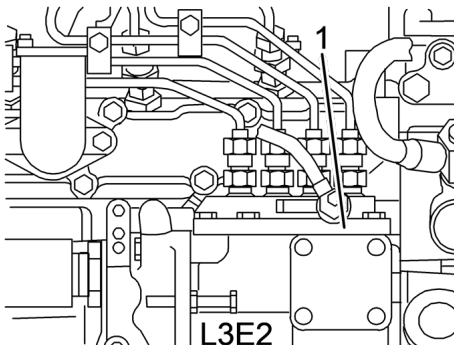


Figure 2

1. Serial number

The serial number is stamped on the engine block near the injection pump mounting bracket.

Document Title: Load capacity tables	Function Group: 020	Information Type: Service Information	Date: 2018/4/13
Profile:			

Load capacity tables

- Rated handling loads in kg, i.e. 75% of the tipping load or 87% of the hydraulic limit. (* = hydraulic limit)
These loads apply for the complete height concerned (Z.), for the specified reach. Increase by 3% for steel tracks, except the values marked with * (hydraulic limits).

WARNING

Transport of objects in lifting tackle operation is not permitted when the machine is supported by the dozer blade.

The specified values are valid for a machine:

- without attachment and without quick coupling.
If handling is accomplished in lifting gear operation with an assembled tool and/or assembled standard connecting system, the weight of these attachments must be subtracted from the values stated in the table.
- On level, compact ground.
- With full rotation of the superstructure.
- On rubber tracks.
Equipment parallel to the axis of the superstructure.
- With a 75 kg driver in the cab.

Document Title: Machine identification	Function Group: 020	Information Type: Service Information	Date: 2018/4/13
Profile:			

Machine identification

The following illustration and description shows which identification plates are on the machine.

When ordering spare parts or in case of enquiries by phone or in writing the model designation and the product identification number must be specified.

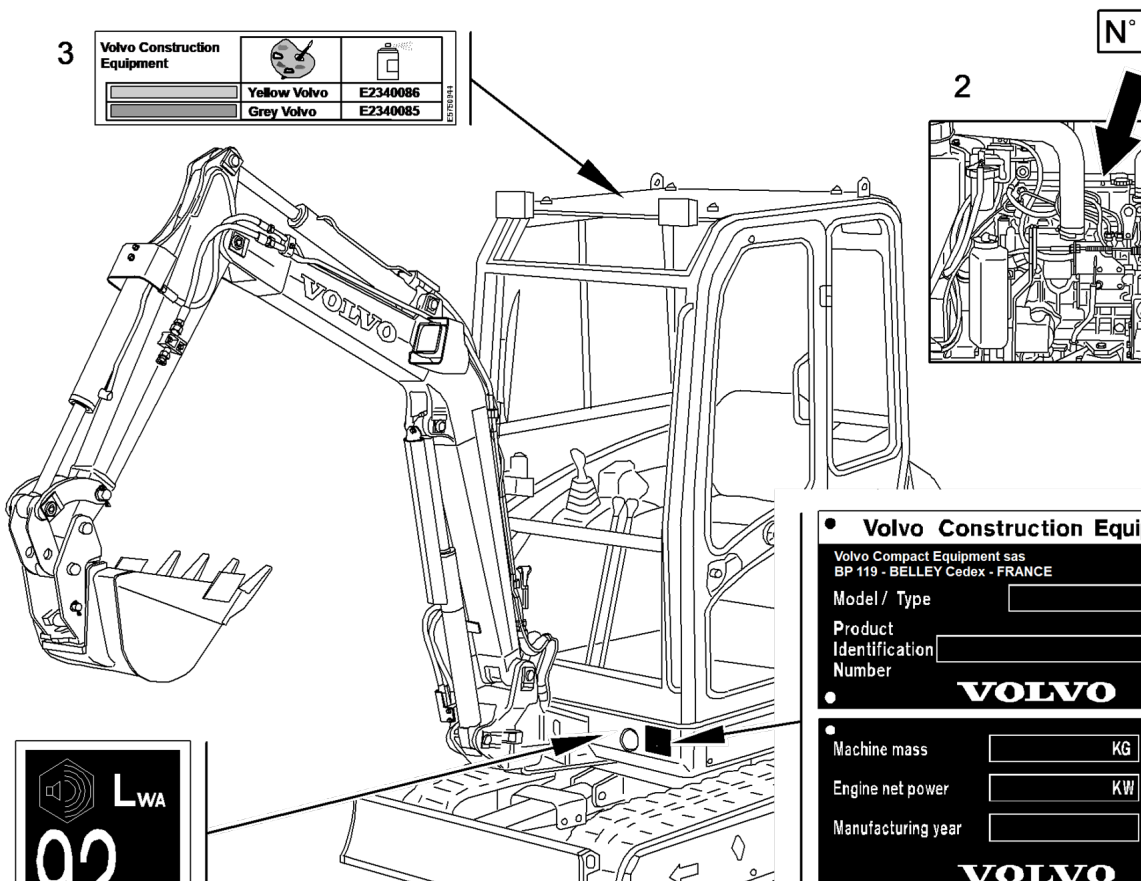


Figure 1
Machine identification

1. Product plate with product identification number for the complete machine, model designation, weight of machine, engine power and year of manufacture. The plate is located on the front of the rotating chassis.
2. The identification of the engine is inscribed on the rocker arm cover.
3. Spray finish, cabin type, type approval and serial number can be found on the rear roof beam of the cabin.
4. Sound capacity of the machine [1] ⓘ

[1] On type EC20B 93 dB

Document Title: Nominal lifting loads EC15B XT	Function Group: 020	Information Type: Service Information	Date: 2018/4/13
Profile:			

Nominal lifting loads EC15B XT

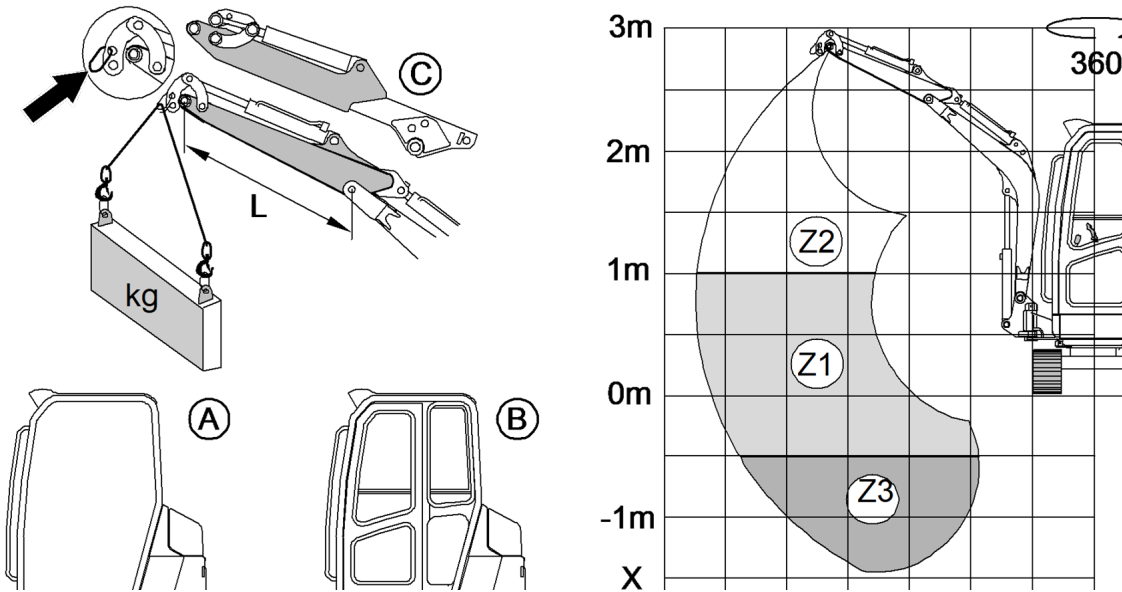


Figure 1

Load capacity tables

			E250541A	E250541A	E250541A	E250541A	E250541A	E250541A	E250541A
→X(m)		>	1	1.5	2	2.5	3	3.4 maxi	3.5 maxi
A	L: 0.90 m	Z2			285	210	165		
		Z1	745*	405	270	205	160		
		Z3	745*	410	275	205			
	L: 1.15 m	Z2			290	190*	165		
		Z1	610*	400	270	200	160	135	
		Z3	610*	405	270	200	160		
	C	Z2			270	170*	150		
		Z1	570*	380	255	185	145		120
		Z3	570*	385	255	185	145		
B	L: 0.90 m	Z2			325*	250*	200		
		Z1	745*	485	325	245	195		
		Z3	745*	495	330	245			
	L: 1.15 m	Z2			350	190*	200		
		Z1	610*	485	325	245	195	165	
		Z3	610*	485	325	245	195		
	C	Z2			305*	170*	170		

Z1	570*	435	290	215	170		140
Z3	570*	435	290	215	170		[1] ⓘ

- Rated handling loads in kg, i.e. 75 % of the tipping load or 87 % of the hydraulic limit (* = hydraulic limit). These loads apply for the complete height concerned (Z.), for the specified reach. Increase by 3 % for steel tracks, except the values marked with * (hydraulic limits).

WARNING

Transport of objects in lifting gear operation is not permitted when the machine: – is supported by the dozer blade.

[1] (*) hydraulic limit

Document Title: Nominal lifting loads EC15B XTV	Function Group: 020	Information Type: Service Information	Date: 2018/4/13
Profile:			

Nominal lifting loads EC15B XTV

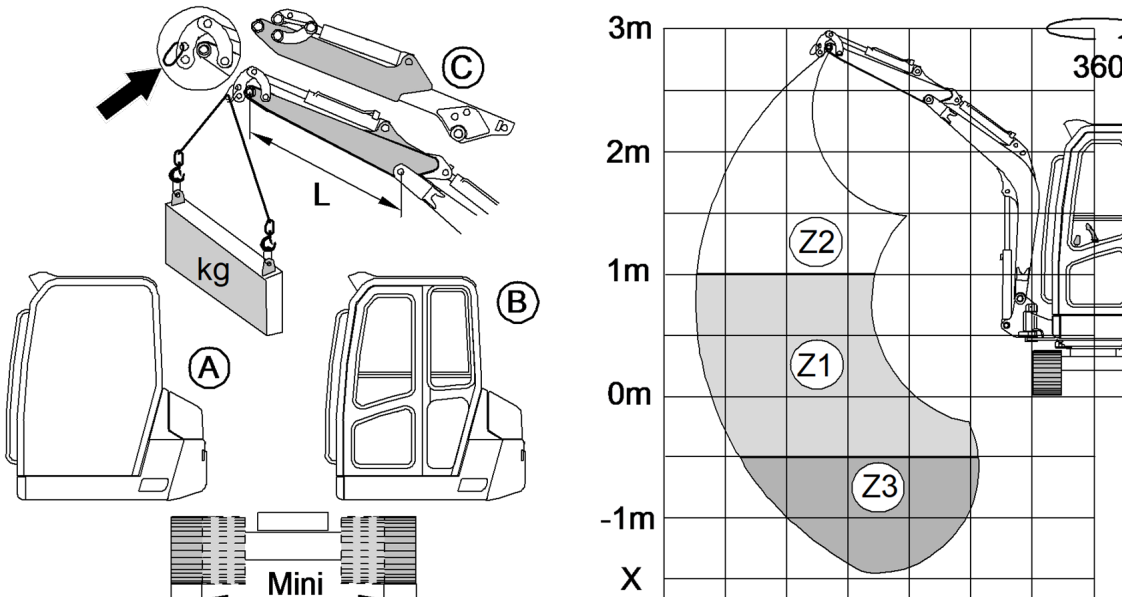


Figure 1

Load capacity tables

		E250541A		E250541A		E250541A		E250541A		E250541A		E250541A		E250541A		
		1		1.5		2		2.5		3		3.4 maxi		3.5 maxi		
→X(m)	>	Mini	Maxi	Mini	Maxi	Mini	Maxi	Mini	Maxi	Mini	Maxi	Mini	Maxi	Mini	Maxi	
		A	L: 0.90 m	Z2				315	330*	250	250*	180	210			
Z1	760*			760*	450	530	300	350	225	260	180	205				
Z3	760*			760*	460	535	305	350	230	260						
L: 1.15 m	Z2						325	385*	190*	190*	185	210				
	Z1		610*	610*	450	525	300	350	225	260	180	205	155	175		
	Z3		610*	610*	450	530	300	350	225	260	180	205				
C	Z2						310*	310*	175*	175*	165	180				
	Z1		580*	580*	420	460	280	305	205	225	160	175			135	145
	Z3		580*	580*	420	460	280	305	205	225	160	175				
B	L: 0.90 m	Z2				330*	330*	250*	250*	210	235					
		Z1	760*	760*	515	595	345	395	260	295	205	230				
		Z3	760*	760*	525	605	350	395	260	295						
	L: 1.15 m	Z2					370	385*	190*	190*	210	230*				
		Z1	610*	610*	515	590	345	385*	260	290	205	230	175	210		
		Z3	610*	610*	515	595	345	395	260	290	205	230				

C	Z2					310*	310*	175*	175*	185	200*				
	Z1	580*	580*	475	515	315	345	235	255	185	200			150	165
	Z3	580*	580*	480	520	320	345	235	255	185	200				[1] ⓘ

- Rated handling loads in kg, i.e. 75 % of the tipping load or 87 % of the hydraulic limit (* = hydraulic limit). These loads apply for the complete height concerned (Z), for the specified reach. Increase by 3 % for steel tracks, except the values marked with * (hydraulic limits).



Transport of objects in lifting gear operation is not permitted when the machine: – is supported by the dozer blade.

[1] (*) hydraulic limit

Document Title: Nominal lifting loads EC15B XR	Function Group: 020	Information Type: Service Information	Date: 2018/4/13
Profile:			

Nominal lifting loads EC15B XR

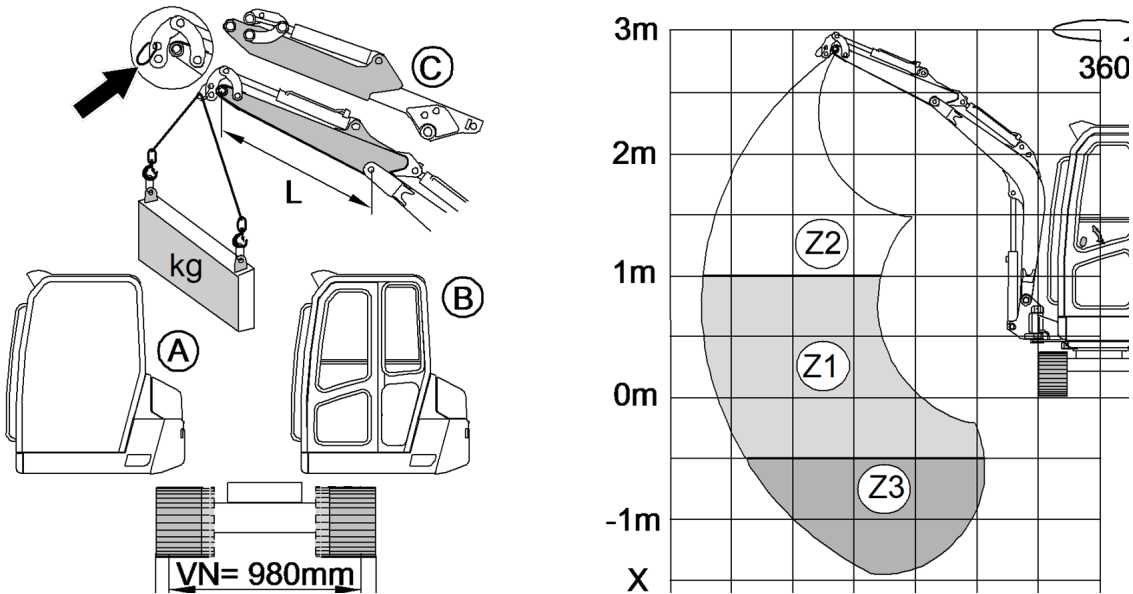


Figure 1

Load capacity tables

		↻ E250541A		↻ E250541A		↻ E250541A		↻ E250541A		↻ E250541A		↻ E250541A		↻ E250541A		
→X(m)	>	1		1.5		2		2.5		3		3.4 maxi		3.5 maxi		
		VN	VL	VN	VL	VN	VL	VN	VL	VN	VL	VN	VL	VN	VL	
A	L: 0.90 m	Z2				275	325*	205	250*	160	190					
		Z1	745*	745*	385	480	260	320	195	240	155	190				
		Z3	745*	745*	395	490	260	320	195	240						
	L: 1.15 m	Z2					280	325	190*	190*	160	185				
		Z1	610*	610*	385	455	260	300	195	225	155	180	130	150		
		Z3	610*	610*	385	455	260	300	195	225	155	175				
	C	Z2					255	305*	170*	170*	140	165				
		Z1	570*	570*	355	430	240	280	175	210	135	160			115	135
		Z3	570*	570*	360	440	240	285	175	210	135	165				
B	L: 0.90 m	Z2				325*	325*	240	250*	185	215					
		Z1	745*	745*	440	545	295	360	220	270	175	215				
		Z3	745*	745*	445	550	300	365	225	270						
	L: 1.15 m	Z2					320	365	190*	190*	180	210				
		Z1	610*	610*	435	510	295	340	220	255	175	200	150	170		

C	Z3	610*	610*	440	515	295	340	220	255	175	200				
	Z2					290	305*	170*	170*	165	190				
	Z1	570*	570*	410	490	275	320	205	235	160	185			130	155
	Z3	570*	570*	410	495	275	325	205	240	160	190				[1] ⓘ

- Rated handling loads in kg, i.e. 75 % of the tipping load or 87 % of the hydraulic limit (* = hydraulic limit). These loads apply for the complete height concerned (Z), for the specified reach. Increase by 3 % for steel tracks, except the values marked with * (hydraulic limits).









 WARNING

Transport of objects in lifting gear operation is not permitted when the machine: – is supported by the dozer blade.

[1] (*) hydraulic limit

Please Click Here To Download The Complete Manual
Download Other Manuals
If Having Any Questions Feel Free To Contact us

admin@servicemanualbit.com

-
-  [General](#)
 -  [Standard Parts , Service](#)
 -  [Engine with Mounting and Equipment](#)
 -  [Elec. System, Warning System, Information System, Instruments](#)
 -  [Power Transmission](#)
 -  [Frame and Track Unit](#)
 -  [Machinery House, Cab, Exterior Trim Parts Anywhere](#)
 -  [Hydraulic System, Digging, Handling, Grading Equipment, Misc Equipment](#)