



PARTS CATALOG

Published

2010/11 (Nov.)

0CF10-G50602

P R E F A C E

1. This parts catalog has been issued Model 3GM30(-B,C,F) parts catalog (Pub. No.000Y00R3761) .

Parts catalog No.:000Y00F5062
Date of issue :Mar. , 1995

2. This Parts Catalog covers all parts of engines produced since **May**, 1984 .
3. Specification and Model code.

Model	Specification	Cooling System	Model Code
3GM30	Marine main engine (for export)	Ser water cooling	128374(S,N,G)
3GM30-B	Marine main engine (domestic use)		128374(A,B,C)
3GM30C	For sail drive		128374 E
3GM30F	Marine main engine (for export)	Fresh water r cooling	128391(S,N,G)

4. Parts of sail drive are not listed in this Parts Catalog. regarding these Parts, Please refer to the separate-volume "SD20/SD30 Sail drive Parts Catalog" (Pub.No.000YEO1291)

5. Engine painting colorUrethane metallic echol silver
Replacement parts painted in metallic echol silver are as follows.

<u>Parts No.</u>	<u>Description</u>
977620-10070	1 ℓ (can)
977620-40070	4 ℓ (can)
977620-30071	Spray, one

Directions for the Parts Catalog.

1. The parts stipulated in this Parts Catalog are not necessarily standard equipped parts.
2. Parts may change without prior notice.
3. The following is an example of the Parts Catalog format.

REF.	LEV.	PARTS NO.	DESCRIPTION	Q'TY						I	R
				(A)	(B)	(C)	(D)	(E)	(F)		
1	1	729595-51390	FUEL INJECTION PUMP	1	1	1	1	1			1
1-1	1	729595-51391	FUEL INJECTION PUMP	1	1	1	1	1		N	1
		(A=E00185) (B=E00200)									
3	2	26022-060162	SCREW M 6X 16	9	9	9	9	9			
3-1	2	26022-060162	SCREW M 6X 16	4	4	4	4	4		K	
		(A=E00156) (B=E00156) (C=E00156) (D=E00156) (E=E00156)									
4	2	129470-51040	CAMSHAFT	1	1	1	1	1			
5	2	122710-51050	BEARING, ROLLER	2	2	2	2	2			
6	2	129470-51060	RETAINER	1	1	1	1	1			

Remarks
(1) BOOST COMPEMSATOR TYPE. OPTIONAL PART, TO E00155,(4JH-DT, 4JH-DTZ

① Ref. No.

The Ref. No. listed may not be in accordance with the illustration Ref. No.

(Ex.) Illustration No.

List Ref No.

1

1

(Before change)

1-1

(After change)

For interchangeable symbols N, R and K, illustrations for new parts may be abbreviated.

② Lev. (Level)

Level indication

The numbers below indicate the level of relativity towards the main part.

1 ----- Main parts (Assembly parts)

2 ----- Sub component included in " 1 ".

3 ----- Sub component included in " 2 ".

Note) Parts that are not for sale are partially illustrated but not listed.

③ Interchangeability Mark

When a part change takes place, one of the following interchangeability symbols is indicated beside the part.

Symbol	Interchangeability	Contents note
N	Old $\begin{matrix} \leftarrow \text{Yes} \\ \text{No} \rightarrow \end{matrix}$ New	New Part is interchangeable for Old Part but Old Part is not interchangeable for New Part.
Q	Old $\begin{matrix} \leftarrow \text{No} \\ \text{Yes} \rightarrow \end{matrix}$ New	New Part is not interchangeable for Old Part but Old Part is interchangeable for New Part.
R	Old $\begin{matrix} \leftarrow \text{Yes} \\ \text{Yes} \rightarrow \end{matrix}$ New	New/ Old Parts are both interchangeable.
S	Old $\begin{matrix} \leftarrow \text{No} \\ \text{No} \rightarrow \end{matrix}$ New	New/ Old Parts are both not interchangeable.
W		Part newly added.
Z		Part discontinued.
F		Not interchangeable by a single part but interchangeable together with related parts.
K		Changes only for used parts quantities.

④ Effective Machine No.

When a part changes, the effective Machine No. will be indicated in the (A)-(F) column.

Product Symbol	Product No.	Product Symbol	Product No.
C	Clutch No. Compressor No.	F	Machine No. (Agricultural Equip.)
D	Drive No.	M	Machine No.
E	Engine No.		

Note 1) A date may follow the symbol. (Ex.) 1996.01

Note 2) "XXXXX" and "ZZZZZ" are for parts that could not be predicted or for engine models that could not be identified.

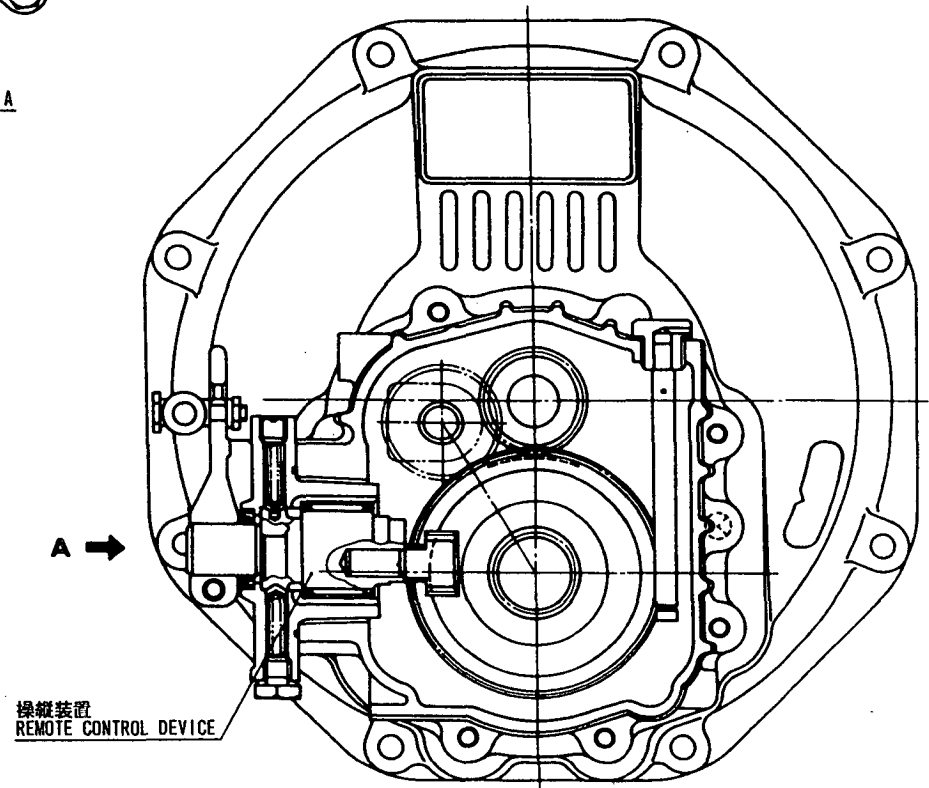
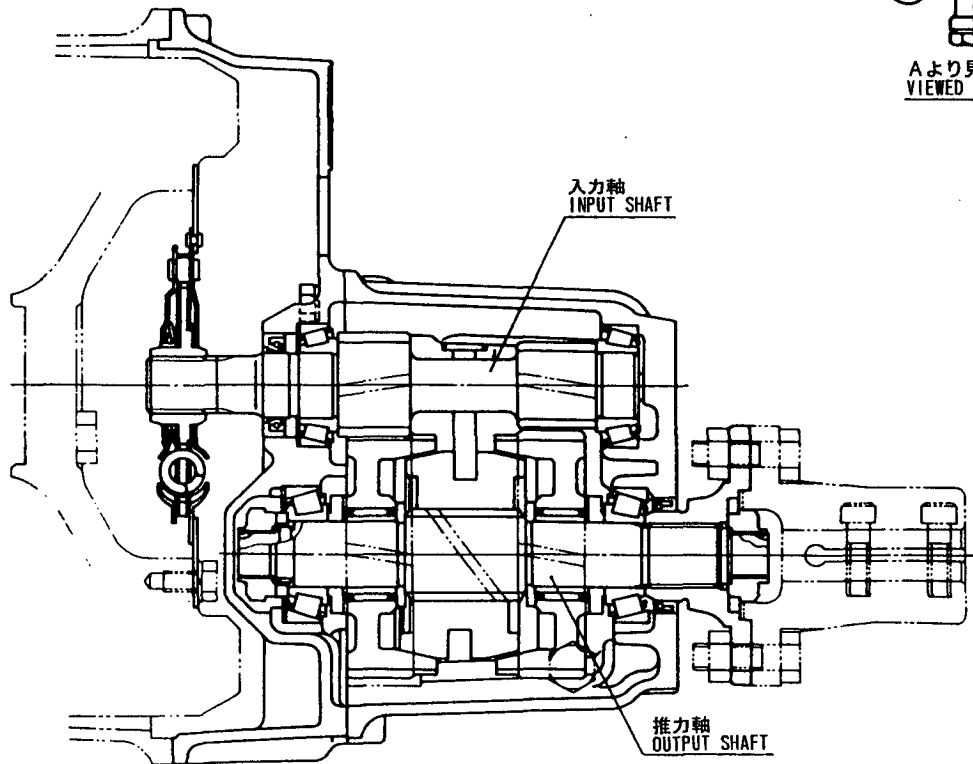
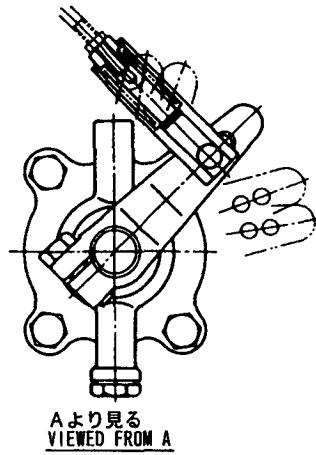
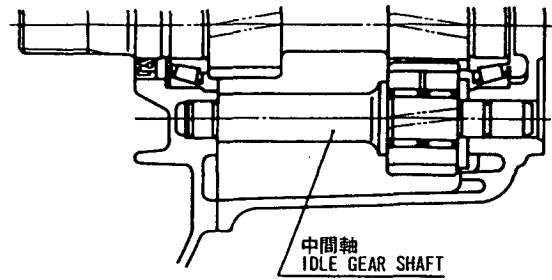
Note 3) (A=E00185) is the E (Engine Serial Number) for the column (A) model (in this case 4JH-DT) after the parts design change.

⑤ Remarks Mark

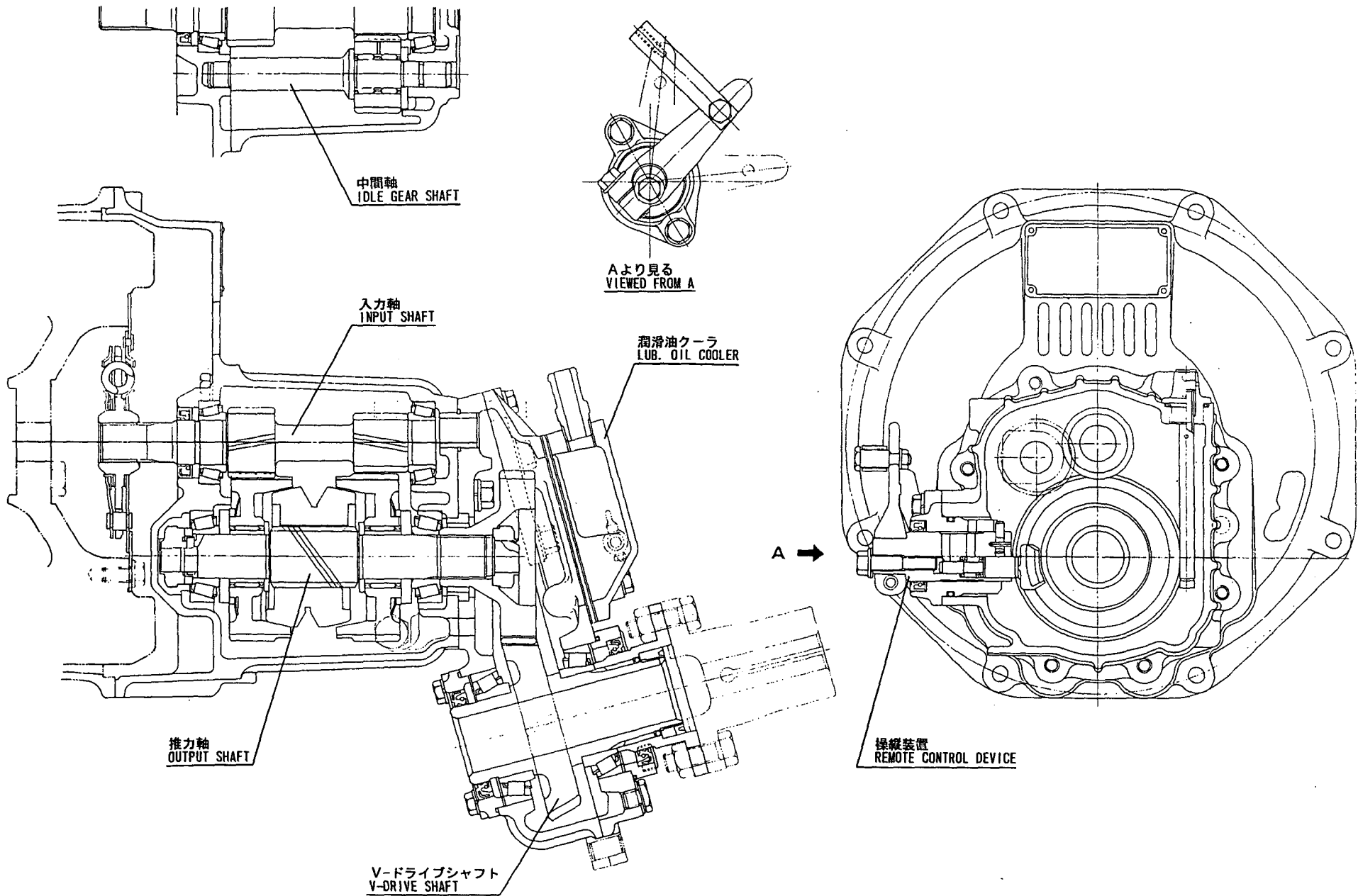
Figures or alphabets (symbols) are entered in the remarks column.

The comments (remarks) on parts that are indicated at the bottom of the illustration are the same symbols as those stated above.

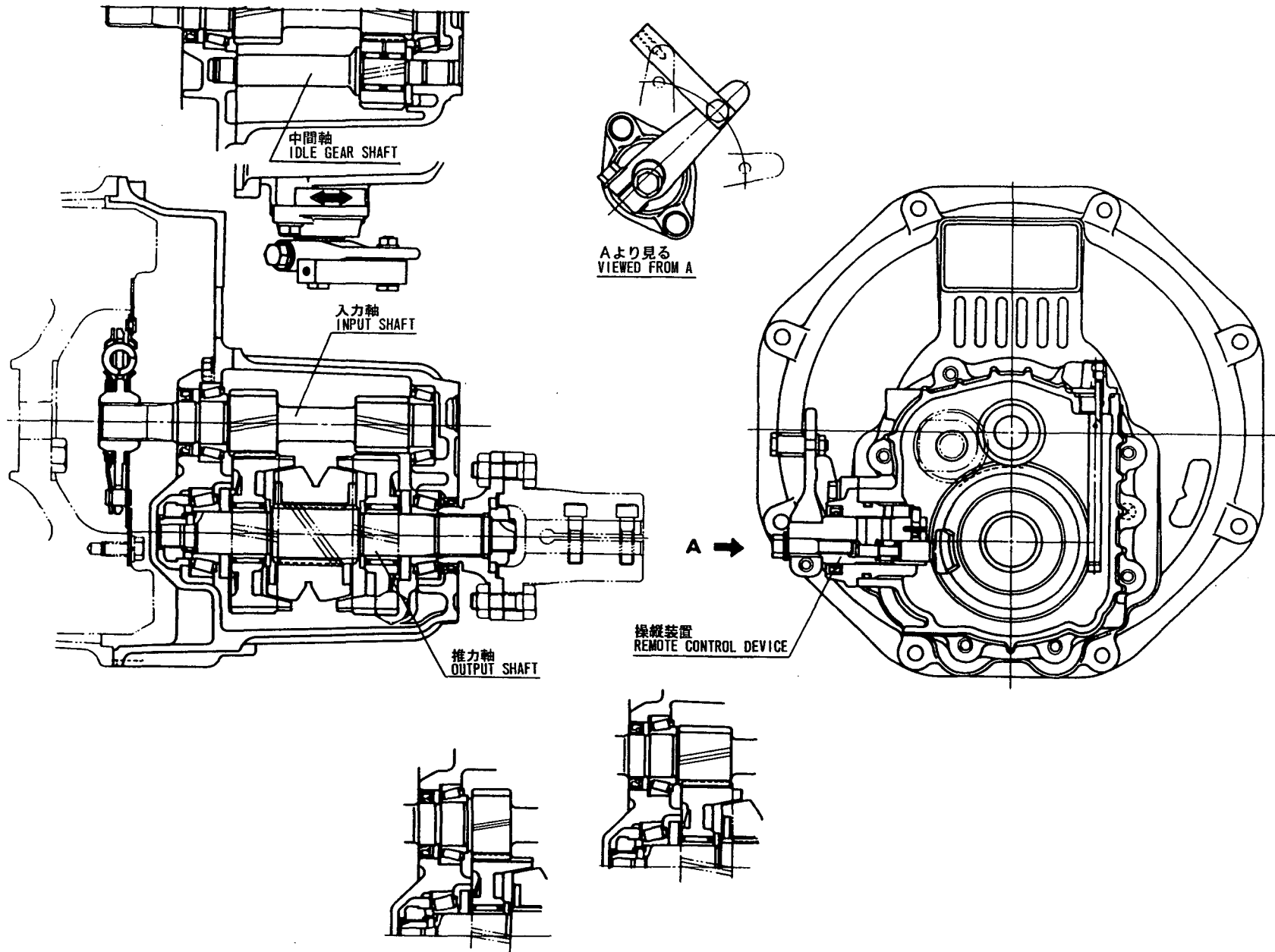
KM3-A 断面図
KM3-A SECTIONAL VIEW



KM3V 断面図
KM3V SECTIONAL VIEW



KM3 P 断面図
KM3P SECTIONAL VIEW



CONTENTS

MODEL : 3GM30 SERIES
PC NO : 0CF10-G50602

Fig.No.	GROUP NAME
3GM30	
1.	CYLINDER BLOCK
2.	CYLINDER BLOCK
3.	GEAR HOUSING
4.	GEAR HOUSING
5.	LUB. OIL SUMP
6.	FLYWHEEL HOUSING
7.	FLYWHEEL HOUSING
8.	MAIN BEARING HOUSING
9.	BREATHER
10.	LABEL
11.	ENGINE LIFTER
12.	ENGINE LIFTER
13.	ENGINE BRACKET
14.	FLEXIBLE MOUNT
15.	ANTI-CORROSIVE ZINC
16.	CYLINDER HEAD
17.	CYLINDER HEAD
18.	BONNET
19.	AIR INTAKE SILENCER
20.	EXHAUST MANIFOLD
21.	MIXING ELBOW
22.	CAMSHAFT
23.	CAMSHAFT
24.	CRANKSHAFT & FLYWHEEL
25.	PISTON
26.	CONNECTING ROD
27.	LUB. OIL PUMP
28.	LUB. OIL DIPSTICK
29.	LUB. OIL STRAINER

Fig.No.	GROUP NAME
30.	L.O.PRESS.REGULATING VALVE
31.	LUB. OIL LINE
32.	COOLING SEA WATER PUMP
33.	COOLING SEA WATER PUMP
34.	COOLING FRESH WATER PUMP
35.	COOLING FRESH WATER COOLER
36.	SUBTANK
37.	KINGSTON COCK
38.	COOLING SEA WATER LINE
39.	COOLING FRESH WATER LINE
40.	THERMOSTAT
41.	THERMOSTAT
42.	COOLING SEA WATER LINE(OPTIONAL)
43.	FUEL INJECTION PUMP
44.	FUEL FEED PUMP
45.	FUEL INJECTION VALVE
46.	FUEL STRAINER
47.	FUEL INJECTION LINE
48.	FUEL INJECTION LINE
49.	FUEL LINE
50.	FUEL LINE(3GM30F/FVE)
51.	FUEL RETURN LINE
52.	GOVERNOR DRIVING
53.	CONTROL DEVICE
54.	IDLE ADJUSTER
55.	FUEL CONTROL DEVICE
56.	ENGINE STOP DEVICE
57.	SPEED REMOTE CONTROL
58.	HAND START
59.	STARTING MOTOR

CONTENTS

MODEL : 3GM30 SERIES

PC NO : 0CF10-G50602

Fig.No. GROUP NAME

- 60. GENERATOR
- 61. GENERATOR
- 62. BATTERY SWITCH
- 63. WIRE HARNESS
- 64. CLUTCH
- 65. DUMPER DISK
- 66. TAPER COUPLING
- 67. CLUTCH REMOTE CONTROL
- 68. PANEL(A-TYPE)
- 69. TOOL
- 70. STARTING MOTOR COMPONENT PART
- 71. GENERATOR COMPONENT PART
- 72. MIXING ELBOW(OPTIONAL)
- 73. MIXING ELBOW(OPTIONAL)
- 74. LUB.OIL WASTE PUMP(OPTIONAL)
- 75. ELECTRIC BILGE PUMP(12V)(OP)
- 76. KINGSTON COCK(OPTIONAL)
- 77. FUEL TANK(OPTIONAL)
- 78. ENGINE STOP CABLE(OPTIONAL)
- 79. TAPER COUPLING(OPTIONAL)
- 80. COUPLING(OPTIONAL)
- 81. STRAIGHT COUPLING(OPTIONAL)
- 82. SLIT COUPLING(OPTIONAL)
- 83. SINGLE LEVER CONTROL(OPTIONAL)
- 84. PANEL(B-TYPE)(OPTIONAL)
- 85. PANEL(B-TYPE,NEW,OPTIONAL)
- 86. PANEL(A-TYPE)(OPTIONAL)
- 87. EXTENSION WIRE(OPTIONAL)
- 88. SPECIAL TOOL(OPTIONAL)
- 89. REPAIR PART(OPTIONAL)

Fig.No. GROUP NAME

- 90. REPAIR PART(OPTIONAL)
- 91. GASKET SET(OPTIONAL)

KM3A

- 92. CLUTCH HOUSING
- 93. INPUT SHAFT & SUPPORT SHAFT
- 94. OUTPUT SHAFT
- 95. REMOTE CONTROL DEVICE
- 96. TOOL(OPTIONAL)
- 97. CLUTCH HOUSING
- 98. INPUT SHAFT & SUPPORT SHAFT
- 99. OUTPUT SHAFT
- 100. REMOTE CONTROL DEVICE
- 101. TOOL(OPTIONAL)

KM3V

- 102. CLUTCH HOUSING
- 103. V-DRIVE HOUSING
- 104. INPUT SHAFT
- 105. SUPPORT SHAFT
- 106. OUTPUT SHAFT
- 107. V-DRIVE SHAFT
- 108. LUB. OIL COOLER
- 109. REMOTE CONTROL DEVICE
- 110. TOOL(OPTIONAL)

3GM30

- 111. SAFETY LABEL

Thanks for your reading.

Please click here to download complete manual instantly.

And can also choose other manuals.

Feel free --->write to me with any questions.

Our service email:

manuals007@hotmail.com