



# PARTS CATALOG

Published

2010/11 (Nov.)

0CF10-G50502

# P R E F A C E

1. This parts catalog has been issued Model 2GM20(-B,C,F) parts catalog (Pub. No. 000Y00R3751) .

Parts catalog No.:000Y00F50552  
Date of issue :Mar. , 1995

2. This Parts Catalog Covers all parts of engines massproduced since May, 1984 .

3. Specification and Model Code.

Model	Specification	Cooling System	Model Code
2GM20	Marine main engine (for export)	Ser water cooling	128271(S,N,G)
2GM20-B	Marine main engine (domestic use)		128271(A,B,C)
2GM20C	For sail drive		128271 E
2GM20F	Marine main engine (for export)	Fresh water cooling	128291(S,N,G)

4. Parts of Sail Drive are not listed in this Psrts Catalog. For these Parts, please refer to separate-volume "SD20/SD30 Sail Drive Parts Catalog" (Pub.No.000YE0F1291)

5. Engine Painting Color.....Urethane Metallic Echol Silver

Replacement parts painted in Metallic Echol Silver are supplied.

<u>Parts No.</u>	<u>Description</u>
977620-10070	1 ℓ (can)
977620-40070	4 ℓ (can)
977620-30071	Spray,one

## Directions for the Parts Catalog.

1. The parts stipulated in this Parts Catalog are not necessarily standard equipped parts.
2. Parts may change without prior notice.
3. The following is an example of the Parts Catalog format.

REF.	LEV.	PARTS NO.	DESCRIPTION	Q'TY						I	R
				(A)	(B)	(C)	(D)	(E)	(F)		
1	1	729595-51390	FUEL INJECTION PUMP	1	1	1	1	1			1
1-1	1	729595-51391	FUEL INJECTION PUMP	1	1	1	1	1		N	1
		(A=E00185) (B=E00200)									
3	2	26022-060162	SCREW M 6X 16	9	9	9	9	9			
3-1	2	26022-060162	SCREW M 6X 16	4	4	4	4	4		K	
		(A=E00156) (B=E00156) (C=E00156) (D=E00156) (E=E00156)									
4	2	129470-51040	CAMSHAFT	1	1	1	1	1			
5	2	122710-51050	BEARING, ROLLER	2	2	2	2	2			
6	2	129470-51060	RETAINER	1	1	1	1	1			

Remarks
(1) BOOST COMPEMSATOR TYPE. OPTIONAL PART, TO E00155,(4JH-DT, 4JH-DTZ

### ① Ref. No.

The Ref. No. listed may not be in accordance with the illustration Ref. No.

(Ex.) Illustration No.

List Ref No.

1

1

(Before change)

1-1

(After change)

For interchangeable symbols N, R and K, illustrations for new parts may be abbreviated.

### ② Lev. (Level)

Level indication

The numbers below indicate the level of relativity towards the main part.

1 ----- Main parts (Assembly parts)

2 ----- Sub component included in " 1 ".

3 ----- Sub component included in " 2 ".

Note) Parts that are not for sale are partially illustrated but not listed.

### ③ Interchangeability Mark

When a part change takes place, one of the following interchangeability symbols is indicated beside the part.

Symbol	Interchangeability	Contents note
N	Old $\begin{matrix} \leftarrow \text{Yes} \\ \text{No} \rightarrow \end{matrix}$ New	New Part is interchangeable for Old Part but Old Part is not interchangeable for New Part.
Q	Old $\begin{matrix} \leftarrow \text{No} \\ \text{Yes} \rightarrow \end{matrix}$ New	New Part is not interchangeable for Old Part but Old Part is interchangeable for New Part.
R	Old $\begin{matrix} \leftarrow \text{Yes} \\ \text{Yes} \rightarrow \end{matrix}$ New	New/ Old Parts are both interchangeable.
S	Old $\begin{matrix} \leftarrow \text{No} \\ \text{No} \rightarrow \end{matrix}$ New	New/ Old Parts are both not interchangeable.
W		Part newly added.
Z		Part discontinued.
F		Not interchangeable by a single part but interchangeable together with related parts.
K		Changes only for used parts quantities.

### ④ Effective Machine No.

When a part changes, the effective Machine No. will be indicated in the (A)-(F) column.

Product Symbol	Product No.	Product Symbol	Product No.
C	Clutch No. Compressor No.	F	Machine No. (Agricultural Equip.)
D	Drive No.	M	Machine No.
E	Engine No.		

Note 1) A date may follow the symbol. (Ex.) 1996.01

Note 2) "XXXXX" and "ZZZZZ" are for parts that could not be predicted or for engine models that could not be identified.

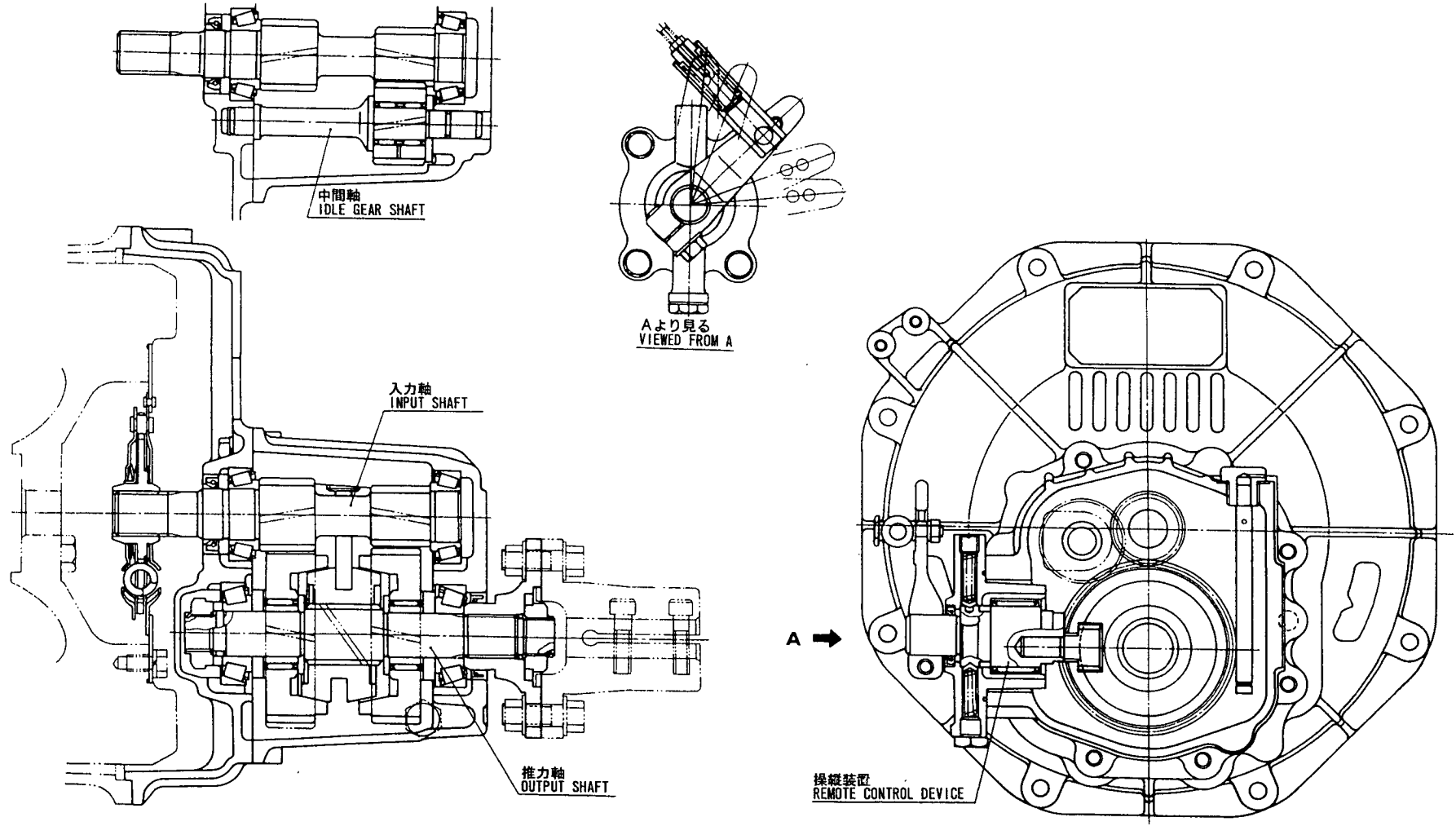
Note 3) (A=E00185) is the E (Engine Serial Number) for the column (A) model (in this case 4JH-DT) after the parts design change.

### ⑤ Remarks Mark

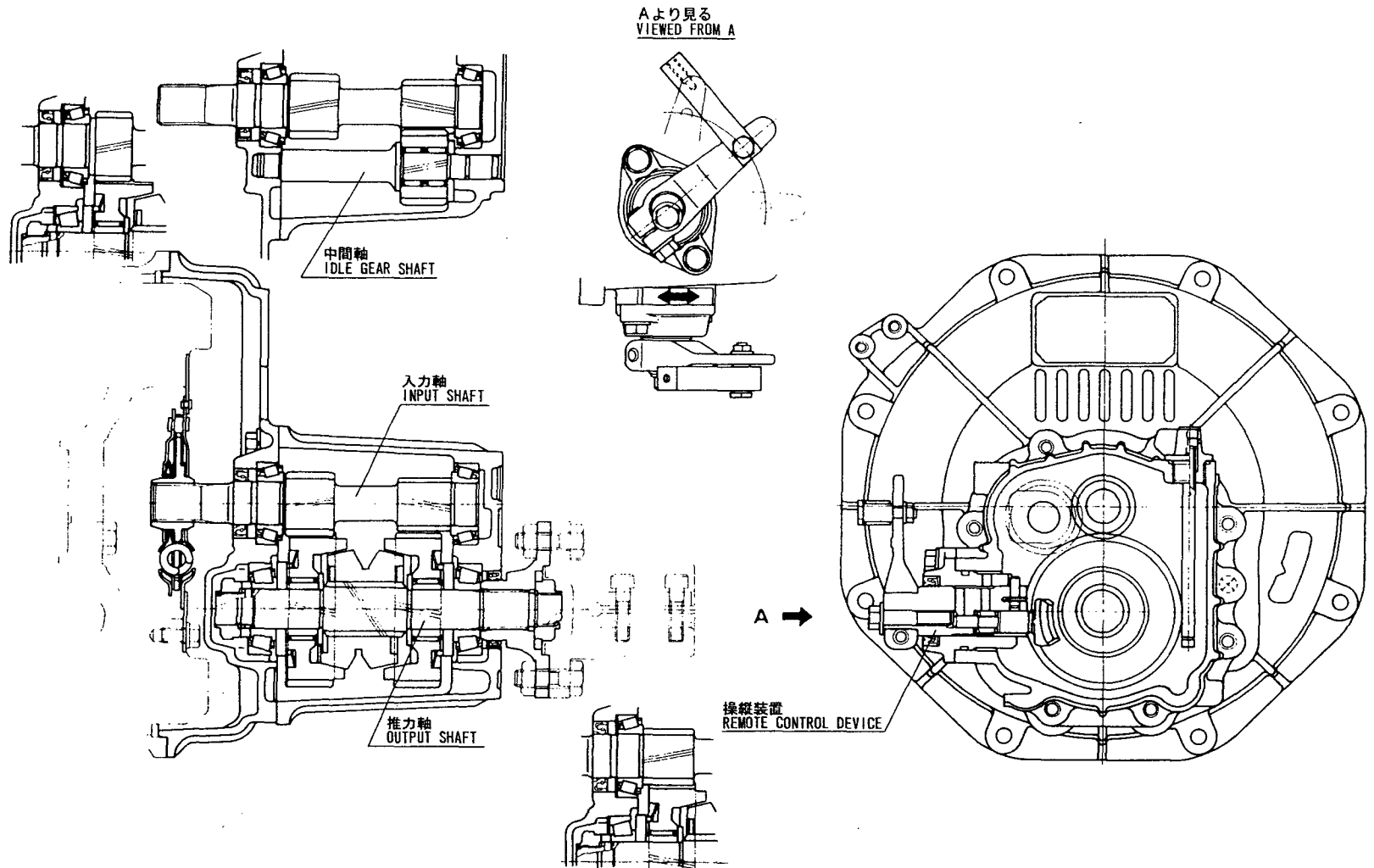
Figures or alphabets (symbols) are entered in the remarks column.

The comments (remarks) on parts that are indicated at the bottom of the illustration are the same symbols as those stated above.

KM2-C 断面図  
KM2-C SECTIONAL VIEW



KM2 P 断面図  
KM2P SECTIONAL VIEW



# CONTENTS

MODEL : 2GM20  
PC NO : 0CF10-G50502

Fig.No.	GROUP NAME
2GM20	
1.	CYLINDER BLOCK
2.	CYLINDER BLOCK
3.	GEAR HOUSING
4.	GEAR HOUSING
5.	LUB. OIL SUMP
6.	FLYWHEEL HOUSING
7.	FLYWHEEL HOUSING
8.	MAIN BEARING HOUSING
9.	BREATHER
10.	LABEL
11.	ENGINE LIFTER
12.	ENGINE LIFTER
13.	ENGINE BRACKET
14.	ENGINE BRACKET
15.	FLEXIBLE MOUNT
16.	ANTI-CORROSIVE ZINC
17.	CYLINDER HEAD
18.	CYLINDER HEAD
19.	BONNET
20.	AIR INTAKE SILENCER
21.	MIXING ELBOW
22.	MIXING ELBOW
23.	CAMSHAFT
24.	CAMSHAFT
25.	CRANKSHAFT & FLYWHEEL
26.	PISTON
27.	CONNECTING ROD
28.	LUB. OIL PUMP
29.	LUB. OIL DIPSTICK

Fig.No.	GROUP NAME
30.	LUB. OIL STRAINER
31.	L.O.PRESS.REGULATING VALVE
32.	LUB. OIL LINE
33.	COOLING SEA WATER PUMP
34.	COOLING SEA WATER PUMP
35.	COOLING FRESH WATER PUMP
36.	COOLING FRESH WATER COOLER
37.	SUBTANK
38.	KINGSTON COCK
39.	COOLING SEA WATER LINE
40.	COOLING FRESH WATER LINE
41.	THERMOSTAT
42.	THERMOSTAT
43.	COOLING SEA WATER LINE(OPTIONAL)
44.	FUEL INJECTION PUMP
45.	FUEL FEED PUMP
46.	FUEL INJECTION VALVE
47.	FUEL STRAINER
48.	FUEL STRAINER
49.	FUEL INJECTION LINE
50.	FUEL INJECTION LINE
51.	FUEL LINE
52.	FUEL LINE
53.	FUEL RETURN LINE
54.	GOVERNOR DRIVING
55.	CONTROL DEVICE
56.	IDLE ADJUSTER
57.	FUEL CONTROL DEVICE
58.	ENGINE STOP DEVICE
59.	SPEED REMOTE CONTROL

# CONTENTS

MODEL : 2GM20  
PC NO : 0CF10-G50502

## Fig.No. GROUP NAME

- 60. SPEED REMOTE CONTROL
- 61. HAND START
- 62. STARTING MOTOR
- 63. GENERATOR
- 64. GENERATOR
- 65. BATTERY SWITCH
- 66. WIRE HARNESS
- 67. CLUTCH
- 68. DUMPER DISK
- 69. TAPER COUPLING
- 70. CLUTCH REMOTE CONTROL
- 71. PANEL(A-TYPE)
- 72. TOOL
- 73. STARTING MOTOR COMPONENT PART
- 74. GENERATOR COMPONENT PART
- 75. MIXING ELBOW(OPTIONAL)
- 76. MIXING ELBOW(OPTIONAL)
- 77. LUB. OIL WASTE PUMP(OPTIONAL)
- 78. ELECTRIC BILGE PUMP(12,OPTIONAL)
- 79. KINGSTON COCK(OPTIONAL)
- 80. FUEL TANK(OPTIONAL)
- 81. ENGINE STOP CABLE(OPTIONAL)
- 82. TAPER COUPLING(OPTIONAL)
- 83. COUPLING(OPTIONAL)
- 84. STRAIGHT COUPLING(OPTIONAL)
- 85. SLIT COUPLING(OPTIONAL)
- 86. SINGLE LEVER CONTROL(OPTIONAL)
- 87. PANEL(B-TYPE)(OPTIONAL)
- 88. PANEL(B-TYPE,NEW,OPTIONAL)
- 89. PANEL(A-TYPE)(OPTIONAL)

## Fig.No. GROUP NAME

- 90. EXTENSION WIRE(OPTIONAL)
- 91. SPECIAL TOOL(OPTIONAL)
- 92. REPAIR PART(OPTIONAL)
- 93. REPAIR PART(OPTIONAL)
- 94. GASKET SET(OPTIONAL)

### KM2C

- 95. CLUTCH HOUSING
- 96. INPUT SHAFT & SUPPORT SHAFT
- 97. OUTPUT SHAFT
- 98. REMOTE CONTROL DEVICE

### KM2P

- 99. TOOL(OPTIONAL)
- 100. CLUTCH HOUSING
- 101. INPUT SHAFT & SUPPORT SHAFT
- 102. OUTPUT SHAFT
- 103. REMOTE CONTROL DEVICE
- 104. TOOL(OPTIONAL)

### KM3V

- 105. CLUTCH HOUSING
- 106. V-DRIVE HOUSING
- 107. INPUT SHAFT
- 108. SUPPORT SHAFT
- 109. OUTPUT SHAFT
- 110. V-DRIVE SHAFT
- 111. LUB. OIL COOLER
- 112. REMOTE CONTROL DEVICE
- 113. TOOL(OPTIONAL)

# CONTENTS

MODEL : 2GM20  
PC NO : 0CF10-G50502

Fig.No. GROUP NAME

Fig.No. GROUP NAME

2GM20

114. SAFETY LABEL



**Thanks for your reading.**

**Please click here to download complete manual instantly.**

**And can also choose other manuals.**

**Feel free --->write to me with any questions.**

**Our service email:**

**manuals007@hotmail.com**