

Service Manual

JS130W
JS145W
JS160W
JS175W

PUBLISHED BY THE
TECHNICAL PUBLICATIONS DEPARTMENT
OF JCB SERVICE: ©
UTTOXETER, STAFFORDSHIRE, ST14 7BS,
ENGLAND
Tel. ROCESTER (01889) 590312
PRINTED IN ENGLAND

Publication No. 9803/6310
Issue 5

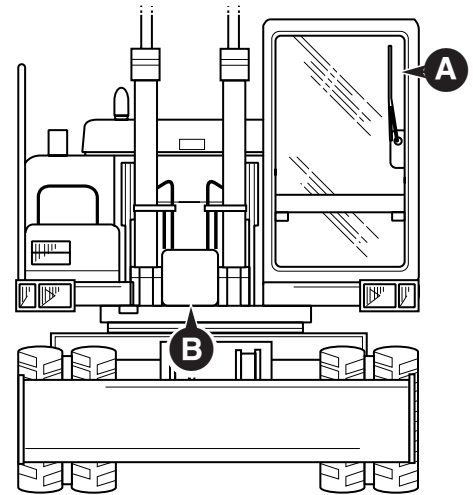
General Information	1
Care & Safety	2
Routine Maintenance	3
Attachments	A
Body & Framework	B
Electrics	C
Controls	D
Hydraulics	E
Transmission	F
Brakes	G
Engine	K

Contents	Page No.
Machine and Axle Identification	1 - 1
Torque Settings	2 - 1
Service Tools	
Body and Framework (Section B)	4 - 1
Electrics (Section C)	5 - 1
Hydraulics (Section E)	6 - 1
Transmission (Section F)	7 - 1
Axles (Section F)	8 - 1
Sealing and Retaining Compounds	9 - 1

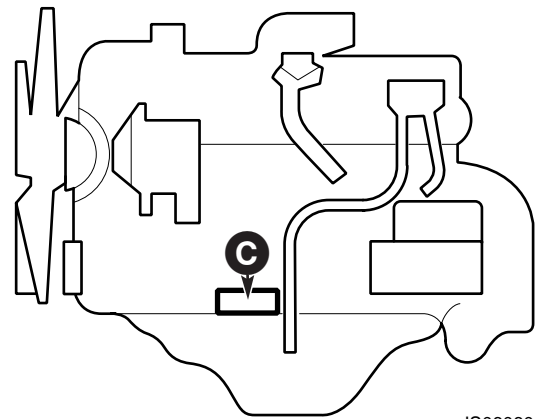
Machine Serial Plates

Each machine has a Data Plate, located to the rear left, inside the cab as shown at **A**. The machine serial number is inscribed at **B** and the engine number at **C**.

If the engine is replaced by a new one, the data plate serial number will be wrong. Either stamp the new number on the plate or stamp out the old one. This will prevent the wrong number being quoted when ordering replacement parts.



JS06050

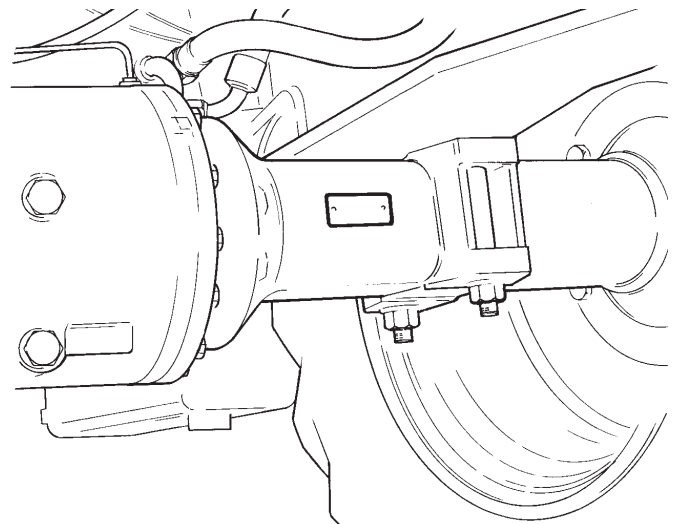


JS06060

Axle Serial Plate

The axle serial number is stamped on a plate mounted to the rear face of the axle, as shown.

- 1 When replacement parts are required, always ensure that the correct parts are obtained, e.g. in the case of gear replacements, always check the part number stamped on the gear, and the number of teeth.
- 2 When ordering replacement parts, quote the details on the serial plate as shown.



S156570

Torque Settings

Note 1: The figures quoted are for non-plated fasteners and are to be used only when there is no torque setting specified in the relevant procedure in this service manual.

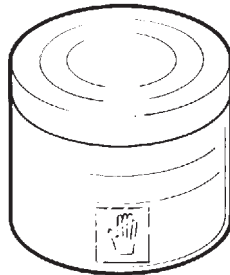
Note 2: The 4T grade settings DO NOT APPLY to fasteners used on the engine. If any 4T specification fasteners are found on the engine, these must be tightened to the figure quoted in the relevant engine manual.

Bolt Size	Strength Grade of Bolt or Stud											
	4T			8.8			10.9			12.9		
	Nm	kgf m	lbf ft	Nm	kgf m	lbf ft	Nm	kgf m	lbf ft	Nm	kgf m	lbf ft
M3	0.39	0.04	0.28	-	-	-	-	-	-	-	-	-
M4	0.78	0.08	0.57	-	-	-	-	-	-	-	-	-
M5	1.67	0.17	1.2	-	-	-	-	-	-	-	-	-
M6	2.84	0.29	2.1	8.04	0.82	5.9	11.3	1.15	8.3	-	-	-
M8	7.06	0.72	5.2	19.6	2.00	14.5	27.7	2.82	20.4	48.0	4.9	35
M10	14.0	1.43	10.3	39.1	3.99	28.8	55.0	5.61	40.6	94.0	9.6	69
M12	24.6	2.51	18.1	68.5	6.98	50.5	96.2	9.81	71	166	16.9	122
M16	61.9	6.31	45.7	173	17.6	127.6	242	24.7	178.5	400	40.8	295
M20	122	12.4	90	337	34.4	249	475	48.4	350	-	-	-
M22	167	17.0	123	464	47.3	342	652	66.5	481	-	-	-
M24	210	21.4	155	584	59.5	431	821	83.7	606	-	-	-
M27	311	31.7	229	864	88.1	637	1220	124	900	-	-	-
M30	420	42.8	310	1170	119	863	1650	168	1217	-	-	-
M33	576	58.7	425	1600	163	1180	2260	230	1667	-	-	-
M36	736	75.1	543	2050	209	1512	2880	294	2124	-	-	-
M39	961	98.0	709	2680	273	1977	3760	383	2773	-	-	-
M42	1190	121	878	3300	336	2434	4640	473	3422	-	-	-
M45	1490	152	1099	4140	422	3054	5820	593	4293	-	-	-
M48	1780	182	1312	4960	506	3659	6970	711	5141	-	-	-

* **Note:** All bolts are high tensile and must not be replaced by bolts of a lesser tensile specification.

Service Tools

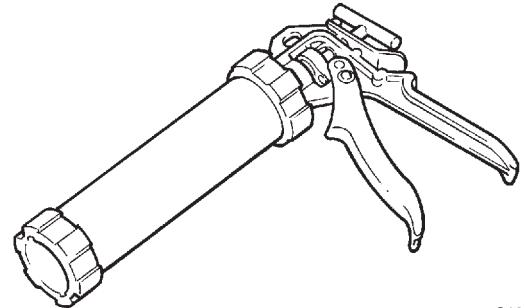
Body and Framework (Section B)



S186240

Hand Cleaner - special blend for the removal of polyurethane adhesives.

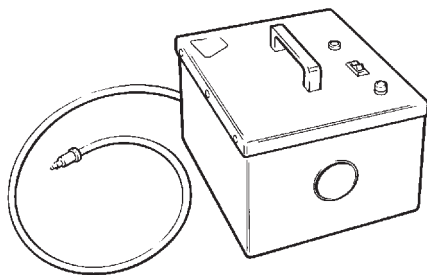
4104/1310 (454g; 1lb tub)



S186270

Cartridge Gun - hand operated - essential for the application of sealants, polyurethane materials etc.

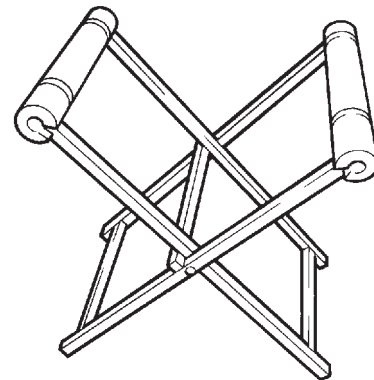
892/00845



S186250

12V Mobile Oven - 1 cartridge capacity - required to pre-heat adhesive prior to use. It is fitted with a male plug (703/23201) which fits into a female socket (715/04300).

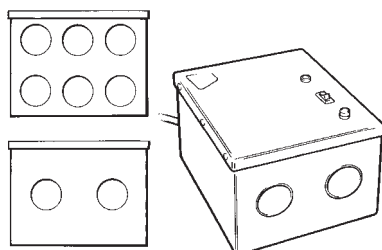
992/12300



S186280

Folding Stand for Holding Glass - essential for preparing new glass prior to installation.

892/00843

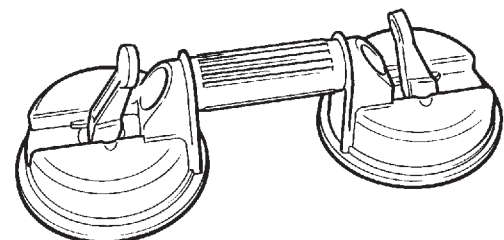


S186260

240V Static Oven - available with 2 or 6 cartridge capacity - required to pre-heat adhesive prior to use. No plug supplied. Note: 110V models available upon request - contact JCB Technical Service

992/12400 - 2 cartridge x 240V

992/12600 - 6 cartridge x 240V



S186300

Glass Lifter - minimum 2 off - essential for glass installation, 2 required to handle large panes of glass. Ensure suction cups are protected from damage during storage.

892/00842

Please Click Here To Download The Complete Manual
Download Other Manuals
If Having Any Questions Feel Free To Contact us

admin@servicemanualbit.com