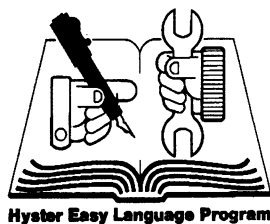




PARTS MANUAL

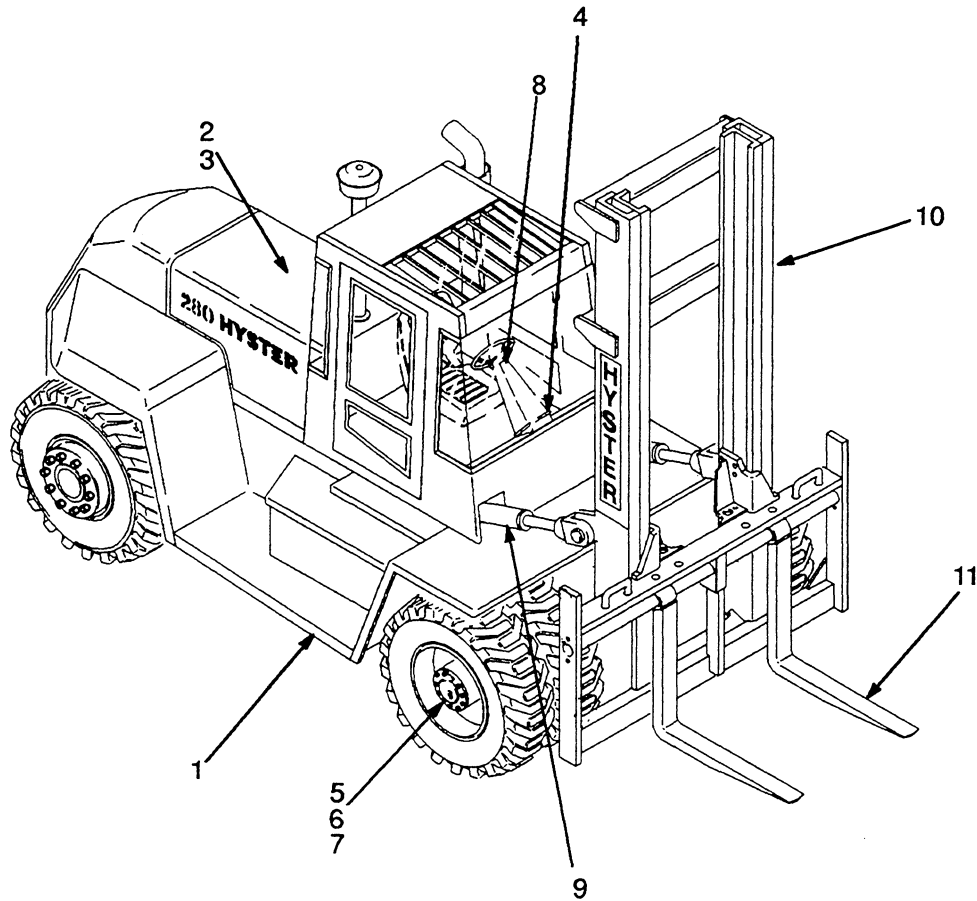
**CHALLENGER
H165-280XL
H8.00-12.00XL**

(D7)



CUSTOMER EDITION

ILLUSTRATED CONTENTS



REF	SECTION	PAGE
1	Frame	9
2	Engine	33
3	Fuel	51
4	Electrical	63
5	Brake	73
6	Transmission	87
7	Drive Axle	109
8	Steering	115
9	Hydraulic	123
10	Vista Two Stage Mast (2-Stg NFL)	147
11	Optional	161
12	Numerical Index	177



TABLE OF CONTENTS

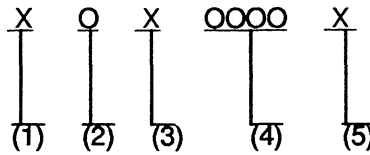
DESCRIPTION	PAGE
Alarm-Backup	176
Alternator	68
Attaching Parts-Tilt Cylinder	144
Axle-Drive	110
Axle-Steering	120
Alternator	77-82
Block-Cylinder	38
Brake System	84
Cab	12
Carriage	156
Carriage, Side-Shift,	160
Clutch-Forward	96
Clutch-Low	97
Clutch-Reverse/Second	98
Clutch-Third	99
Compartment-Operator with Cab	12
Compartment-Operator without Cab	10
Control-Heater	22
Control-Range	90
Converter-Torque	94
Compressor-Air	78
Cooling	36
Counterweight	29
Cover-Valve	46
Covers	20
Crankshaft/Pistons	39
Cylinder-Lift	154
Cylinder Side-Shift	174
Cylinder-Steering	122
Cylinder-Tilt	145
Differential	112
Drive-Gear	42
Electrical	63
Electrical Wiring	64
Engine	33
Exhaust	35
Extinguisher-Fire	175
Fan	30
Filter-Air	59
Filter-Fuel	57
Filter-Oil	47
Filter-Transmission	102
Filter-Water Separator	52
Floorplates	20
Flywheel	37
Forks-Europe	163
Forks-US	162
Frame	9
Fuel	51
Fuel Intake	52
Fuel-Low Pressure	56
Gear-Timing	41
Glass	12
Head-Cylinder	40
Heater	18
Hood/Linkage	28
Hose-Header	164
Housing-Flywheel	37
Hydraulic	124
Injection-Fuel	54
Lever-Forward/Reverse	138



TABLE OF CONTENTS

DESCRIPTION	PAGE
Lever-Hydraulic Control Valve	170
Labels/Paint	26
Lift	152
Light-Strobe	170
Lights-Work, Stop/Tail, Front & Rear Dirve-Europe	172
Lights-Work, Stop/Tail, Front & Rear Dirve-US	168
Lights-Flood-Europe	171
Lights-Flood-US	167
Liner-Sound	37
Lines-Brake	74
Lines-Transmission	88
Linkage Hood	28
Linkage-Throttle	60
Manifolds	48
Mast-Vista Two Stage Limited Free Lift	123
Mast-Inner	150
Mast-Outer	148
Mount-Engine/Transmission	34
Paint	26
Pan-Oil	44
Panel-Instrument	66
Pedal-Monotrol	107
Pedal-Throttle (Forward/Reverse Shift Lever)	61
Pedal-Throttle (Monotrol)	62
Pistons	39
Publications	7
Pump-Charge	102
Pump-Hydraulic	127
Pump-Lift	58
Pump-Steering	118
Pump-Water	49
Seat-Semi-Suspension	24
Seat-Suspension	22
Shaft-Idler	100
Shaft-Output	101
Starter	70
Steering	116
Tank-Air	76
Tank-Hydraulic	126
Tire/Wheel	158
Transmission	92
Valve-Block	119
Valve-Control	106
Valve-Control Five Function	142
Valve-Control Four Function	138
Valve-Control Three Function	134
Valve-Control Two Function	130
Valve-Hydraulic Control	105
Valve-Modulator	104
Valve-Park Brake	84
Valve-Tilt Lock	146
Valve-Treadle/Attaching Parts (Park Brake)	81
Valve-Treadle/Attaching Parts (Service Brake)	80
Valve/Attaching Parts Five Function	140
Valve/Attaching Parts Four Function	136
Valve/Attaching Parts Three Function	132
Valve/Attaching Parts Two Function	128
Washer-Window	31
Wheel	158
Wiper	16

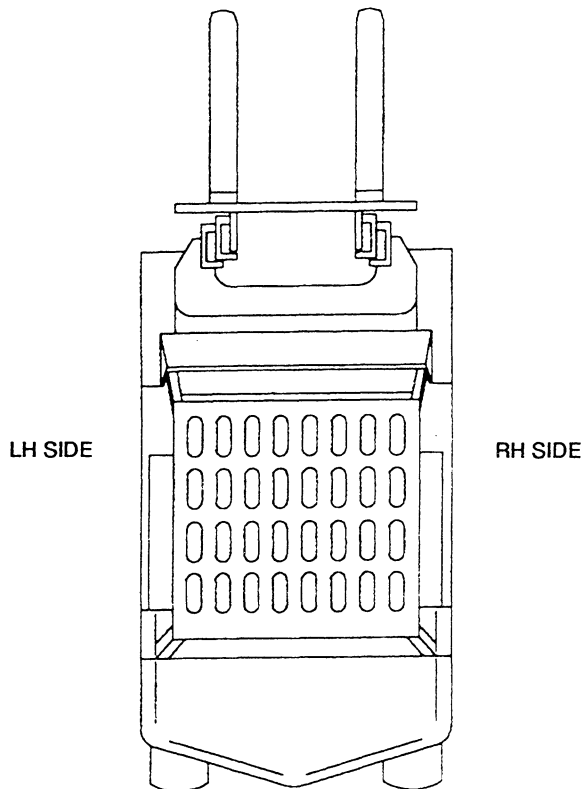
IDENTIFICATION-UNIT UNIT S/N



- (1) & (2) The first letter and number denote the design series and model of the unit
- (3) The second letter denotes the Plant at which the unit was manufactured
- (4) The number series denotes the serial number of the unit
- (5) The final letter denotes the year of manufacture starting with "A" in 1957 and 1980. The letters "I", "O", and "Q" will not be used

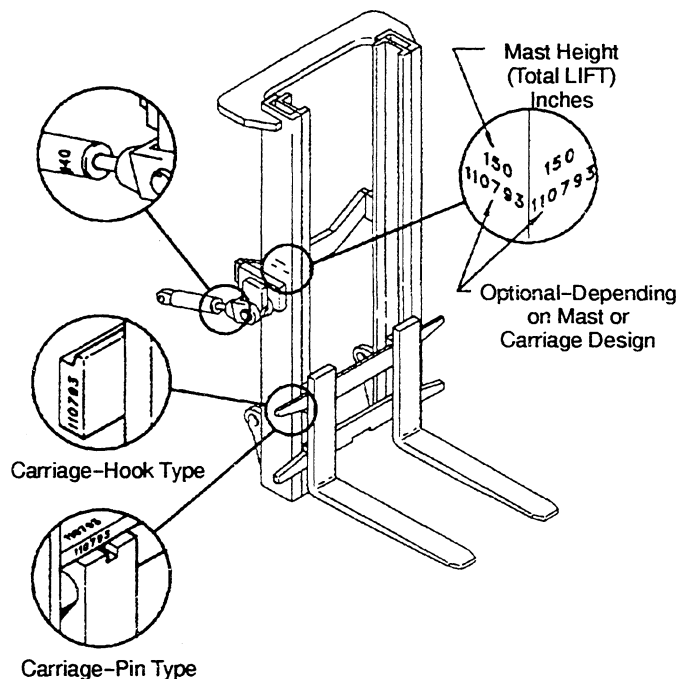
For pending serial numbers contact your local Hyster Dealer

Parts referred to in this book as right or left hand parts are in accordance with the illustration below



LIFT EQUIPMENT IDENTIFICATION

1. Mast group numbers and total lift heights are stamped on the right hand outer mast approximately four feet from the bottom of the load arm. The group numbers include the inner and outer masts, lift cylinder, lift chain and bleeder hoses or pipes.
2. The carriage and tilt cylinder numbers are located as shown. Lift cylinder numbers are stamped on the cylinder shell near the bleeder screw or on the chain anchor. Fork part number, capacity rating, plant code letter and date of manufacture are stamped approximately six inches below the top RH side of load arms. Always refer to these group and part numbers when ordering service parts.



HOW TO USE THE ILLUSTRATED PARTS MANUAL

This Parts Manual describes and illustrates assemblies, subassemblies and detail parts needed for service replacement.

It also includes all parts peculiar to trucks built in overseas plants. These parts are indicated by keys, symbols and footnotes.

INDEX-ILLUSTRATED

REF	ITEM	PAGE
1	Frame	9
2	Engine	41
3	Fuel	41
4	Idle-Drive	47
5	Transmission	47
6	Steering	55
7	Electrical	55
8	Brake	65
9	Hydraulic	80
10	Mast	90
11	Optional	111
12	Attachment-Container	128
13	Index-Numerical	167

INDEX-MASTER

DESCRIPTION	PAGE
ACCUMULATOR	130
ADAPTER-HYDRAULIC PUMP	75
ADAPTER-FLANGE	150
ATTACHMENT-CONTAINER	128
AXLE-DRIVE	47
AXLE-STEERING	47
BLANK-INDEX	80
BLANK-DISC	80
BLANK-INDEX	112, 118
CLUTCH-3RD-SHIFT	162
CLUTCH-5TH-SHIFT	172
COMPARTMENT-OPERATOR	73-74
CONTROL-OPERATOR, SUPPORT AND TILT	10
CONTROL-HYDRAULIC	80
CONTROL-SHIFT	82

INDEX-NUMERICAL

PART NO	FIGURE NO	REF NO	PART NO	FIGURE NO	REF NO	PART NO	FIGURE NO	REF NO	
128	4	102077	1	22	201797	8	48	83	18
129	8		66	46	201807	41	39	85	12
177903	14	102877	106	7	201871	17	5	87	16
177901	14	24	107	3				111	20
178901	1	26	152678					1222887	106
181043	48	26						221325	130
								221357	85
								221358	18
								221359	25
								221373	90
								221376	23
								221377	118
								222443	74
								222454	81
								222479	82
								222887	114
								222888	114
								222885	115
								222707	95
								224848	91
								225234	82
								228414	38
								117	2
								117	2
								23	46
								26	19
								118	19
								107	43

TIRE/WHEEL

TIRE	SIZE	PART NUMBER			
1	2	3	4		
Tire/Tube Assy.	14.00 x 24-28 ply	277569			
Tire/Flap		115582			
Tube	14.00 x 24	1271			
Solid	14.00 x 24	159			
Tubeless	16.00 x 25-24 ply	159			

INDEX-ILLUSTRATED (Detailed Parts List)

REF	ITEM	QTY	REF
1	132528 Ring-Side	1	12
2	134700 Band-Side	1	12
3	134701 Lining	4	12
4	4918 Extension-Valve	4	12
5	4918 Spacer	4	12
6	134628 O-Ring	2	12
7	162275 Pin	4	12
8	162275 Spacer	4	12
9	162278 Valve	2	12
10	162280 Extension-Valve	1	12

WHEN THE PART NUMBER AND THE NEXT HIGHER ASSEMBLY IS NOT KNOWN:

1. USE: Determine the function and application of the part required. Turn to the Illustrated Index page immediately behind the front cover, and select the most appropriate area.
2. Use the Division Index to determine the assembly which would normally contain the part required. Proceed then to locate the part on the assembly breakdown page.

WHEN THE PART NUMBER IS NOT KNOWN AND THE NEXT HIGHER ASSEMBLY IS KNOWN;

3. Determine the assembly the required part is used on. Turn to the Master Index page immediately following the Illustrated Index.
4. Locate the assembly the required part is used on and turn to the page indicated for that assembly. Proceed then to locate the part on the assembly breakdown page.

WHEN THE PART NUMBER IS KNOWN;

5. Use the Numerical Index to find the part number. Turn to the figure listed and locate the part as indicated by the reference number.

GENERAL:

The Assembly Breakdowns include part numbers, description, quantities required, keys and footnotes to help in selecting the correct parts.

6. Keys are used to show effective serial numbers for two or more similar assemblies, RH and LH assembly parts, etc. Select the appropriate key, "A", "B", "C", or "D" and the corresponding quantity column to find the required parts.
7. Indented descriptions under "Name of Part" are used to indicate subparts of assemblies. A major assembly is not indented. Parts under the first, second, or third indent are sub-parts of the major assembly shown above them.
8. Quantities shown are for one assembly. Note that two assemblies are shown, but the quantities of the subparts are indicated as three and three. This means three per assembly.
9. Engineering Change Notice (ECN) numbers for pending serial numbers are shown to allow for the inclusion of the most current parts information. Contact your local Dealer for Hyster Lift Trucks for serial number information listed by ECN number.

ORDERING PARTS:

When ordering replacement parts, give the unit serial number, part number, name of part and quantity required.

For any further information on parts, service, or ordering, consult your local Dealer for Hyster Lift Trucks.

Figure 1. PUBLICATIONS

Every new lift truck is provided with at least three publications. These publications are the PARTS MANUAL, the OPERATING MANUAL and the section of the SERVICE MANUAL called Periodic Maintenance. The OPERATING MANUAL must always be available on every lift truck. This manual has information that the operator must know for inspection and operation of the lift truck. The section Periodic Maintenance has a recommended schedule of service intervals and the procedures for servicing the lift truck.

These manuals, other publications and programs are available from your Dealer for Hyster Lift Trucks to help you operate and maintain your lift truck professionally. See the list that follows for reference to items for lift trucks in this PARTS MANUAL.

Operating Manual

English	897342
Danish	857088
Dutch	857086
French	857082
German	857083
Portuguese	857087

Service Manual (complete)

The Frame (100 SRM 436)	897377
Perkins Diesel Engine (600 SRM 412)	897341
The Three-Speed Powershift Transmission - Description and Operation (1300 SRM 437)	897378
Repairs (1300 SRM 438)	897379
The Differential (1400 SRM 46)	910072
The Planetary Gear Axle (1400 SRM 439)	897380
The Steering Control Unit (1600 SRM 54)	910076
The Steering Axle (1600 SRM 326)	897108
The Brake System (1800 SRM 441)	897382
The Hydraulic System (1900 SRM 443)	897384
The Main Control Valve (2000 SRM 444)	897385
The Tilt Control Valve (2100 SRM 102)	910101
The Tilt Cylinders (2100 SRM 103)	910102
The Alternator (2200 SRM 2)	899784
The Starter (2200 SRM 106)	910107
Instrument Panel Indicators and Senders (2200 SRM 143)	910110
The Mast (4000 SRM 445)	897386
Periodic Maintenance (8000 SRM 433)	897343
Capacities and Specifications (8000 SRM 447)	897388
Diagrams (8000 SRM 448)	897389
Inch (SAE) and Metric Fasteners (8000 SRM 231)	910442

Parts Manual

Operator Training Program

Operator Training Kit Complete	
Slide Format with Carry Case	599628
1/2" VHS Format with Carry Case	852165
"Safety is an Attitude" (1/2" VHS)	852690
"Safety Rules" Playing Cards	852695
Sold-Along Catalog	852505



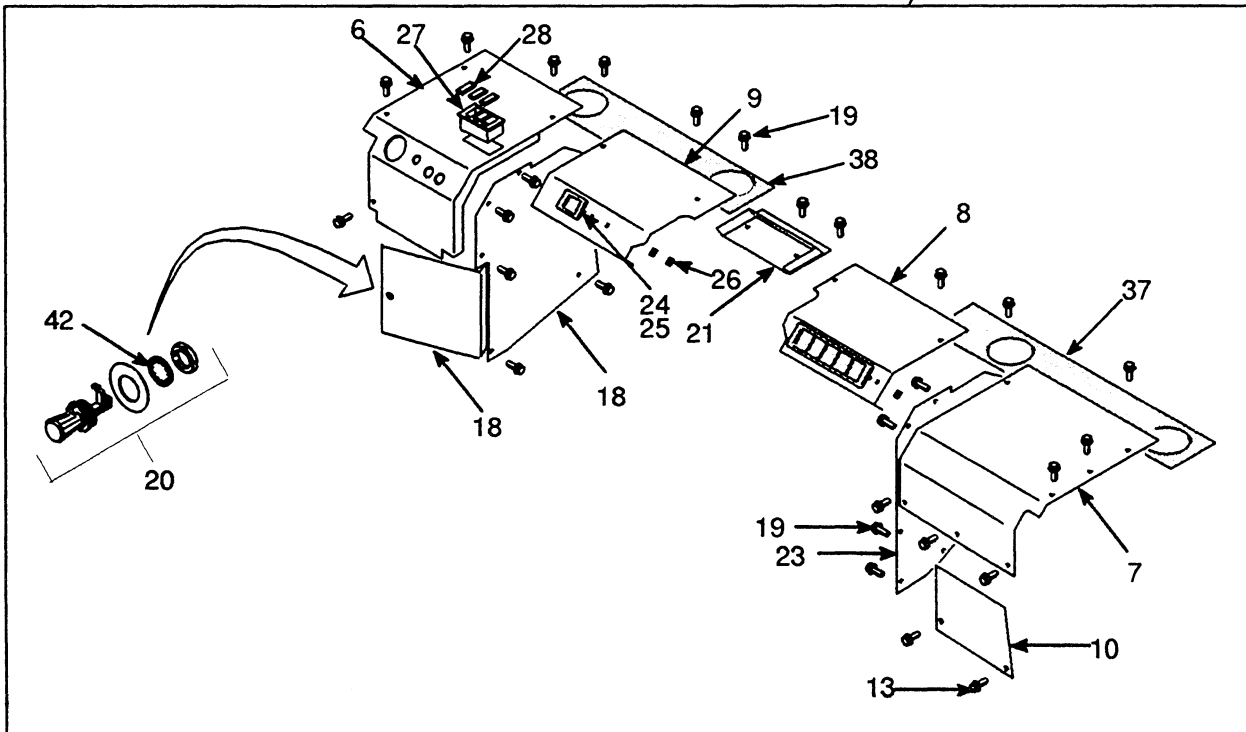
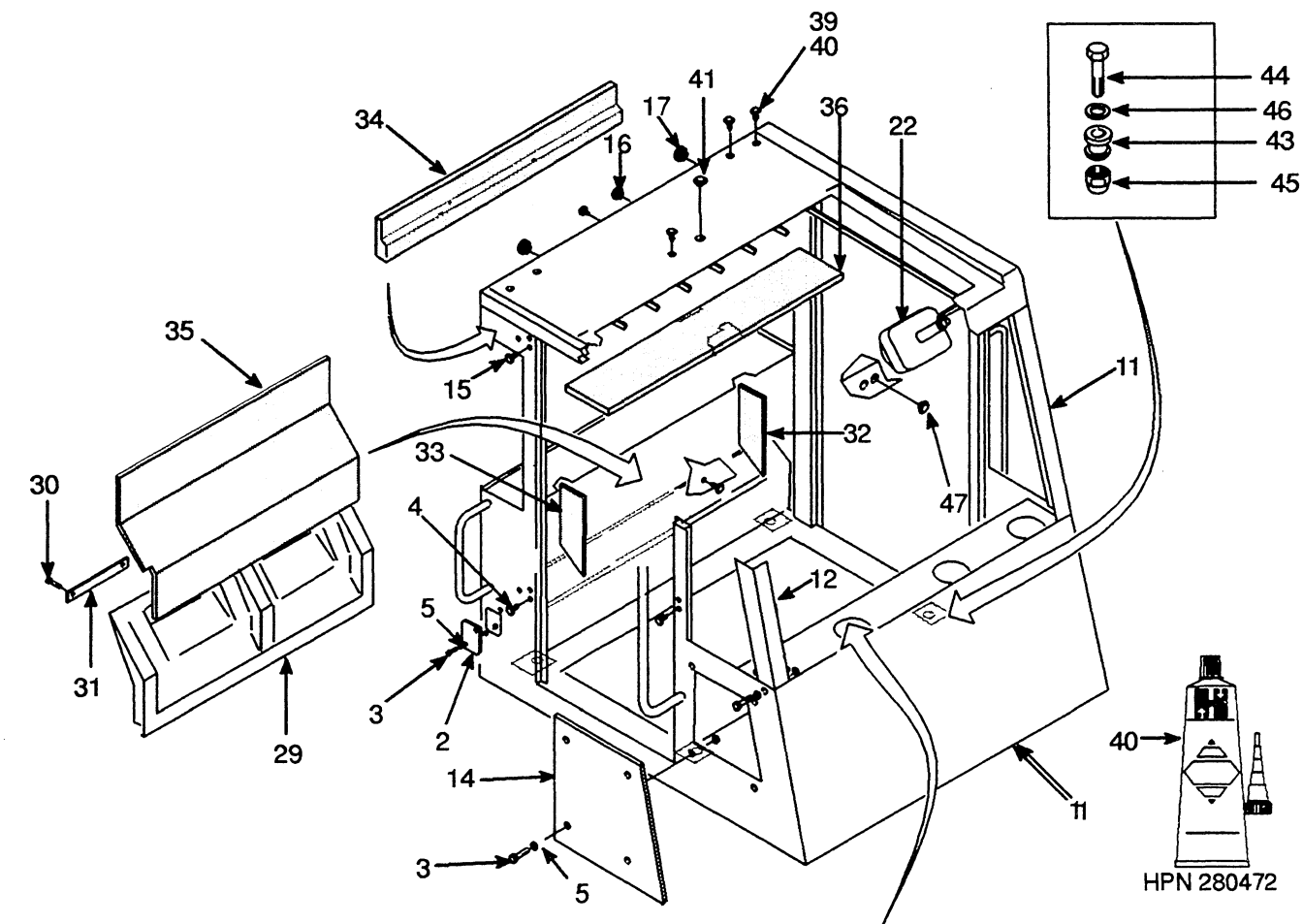
NOTES



FRAME

Compartment-Operator with Cab	12
Compartment-Operator without Cab	10
Control-Heater	22
Counterweight	29
Fan	30
Heater	18
Hood/Linkage	28
Labels/Paint	26
Plates-Floor/Covers	20
Seat-Semi-Suspension	24
Seat-Suspension	23
Washer-Window	31

Figure 2. COMPARTMENT-OPERATOR WITHOUT CAB



Please Click Here To Download The Complete Manual
Download Other Manuals
If Having Any Questions Feel Free To Contact us

admin@servicemanualbit.com