

# **PARTS MANUAL**

---

## **REACHSTACKER**

**R45-27IH, RS45-30CH,  
RS46-30IH, RS46-33CH,  
RS46-33IH, RS46-36CH  
(A222)**

**CUSTOMER EDITION**

---

# ***HYSTER***



**SECTIONS**

<b>1</b>	<b>FRAME</b>
<b>2</b>	<b>ENGINE(S)</b>
<b>3</b>	<b>FUEL SYSTEM</b>
<b>4</b>	<b>ELECTRICAL SYSTEM</b>
<b>5</b>	<b>TRANSMISSION</b>
<b>6</b>	<b>DRIVE AXLE</b>
<b>7</b>	<b>STEERING SYSTEM</b>
<b>8</b>	<b>BRAKE SYSTEM</b>
<b>9</b>	<b>HYDRAULIC SYSTEM</b>
<b>10</b>	<b>BOOM</b>
<b>11</b>	<b>ROTATOR AND SPREADER</b>
<b>12</b>	<b>SPREADER ATTACHMENT</b>
<b>13</b>	<b>OPTIONS</b>
<b>14</b>	<b>NUMERICAL INDEX</b>

This Parts Manual is divided into 14 major sections which are listed above. Quick reference to these sections can be made by placing the right thumb on the tab of the desired section, bending the book back and thumbing the pages to the corresponding tab.



**TABLE OF CONTENTS**

DESCRIPTION	PAGE
<b>A</b>	
ACCUMULATOR	
PISTON TYPE .....	8-10
ACTUATOR SECTION	
S/N A222E-01537X⇒ .....	9-82
AIR FILTER	
TIER I ENGINE	
⇒S/N A222E-01536X .....	2-106
S/N A222E-01537X⇒ .....	2-108
TIER II ENGINE	
S/N A222E-01563Z⇒ EXC. 1564-1565 .....	2-110
AIR INTAKE CONNECTION	
TIER II ENGINE .....	2-98
AIR INTAKE MANIFOLD	
TIER I ENGINE .....	2-58
AIR OUTLET CONNECTION	
TIER II ENGINE .....	2-96
AIR TRANSFER CONNECTION	
TIER II ENGINE .....	2-94
ALTERNATOR AND MOUNTING .....	2-16
ANTI-CAVITATION VALVE .....	9-56
AXLE HOUSING .....	6-16
<b>B</b>	
BOOM ATTACHMENT	
EMPTY CONTAINER HANDLER	
SHEET 1 OF 2	
⇒S/N A222E-1532 .....	4-84
SHEET 2 OF 2	
⇒S/N A222E-1532 .....	4-86
BOOM HYDRAULIC	
⇒S/N A222E-01536X .....	9-16
BOOM TILT CYLINDER	
⇒S/N A222E-01532X .....	9-38
S/N A222E-01533X⇒ .....	9-40
BRAKE ASSEMBLY .....	6-22
SERVICE BRAKE .....	6-18
BREATHER PLUMBING .....	2-10
BUMPERS .....	12-6
<b>C</b>	
CAB TILT	
RS45-30CH, RS45-27IH	
⇒S/N A222E-01562Z INC. 1564-1565 .....	1-16
CHAIN AND SUPPORT ATTACHMENT	
⇒S/N A222E-01536X .....	10-6
S/N A222E-01537X⇒ .....	10-8
CLUTCH	
FORWARD .....	5-14
FOURTH SPEED .....	5-20
LOW SPEED .....	5-18

## TABLE OF CONTENTS (Continued)

DESCRIPTION	PAGE
<b>C</b> (continued)	
REVERSE AND 2ND SHAFT .....	5-10
THIRD SPEED.....	5-16
CONTROL BOX ASSEMBLY	
TIER II ENGINE	
S/N A222E-1563Z⇒.....	4-110
CONTROL LEVER	
⇒S/N A222E-1532 .....	4-22
CONTROL PANEL	
S/N A222E-1533⇒ .....	4-112
CONTROL SECTION	
⇒S/N A222E-01536X.....	9-70
CONTROL UNIT	
⇒S/N A222E-1532 .....	4-20
CONTROL VALVE	
ELECTRONIC INCHING.....	5-30
HYDRAULIC INCHING .....	5-28
CONTROL VALVE AND ATTACHING PARTS	
⇒S/N A222E-01536X.....	9-66
S/N A222E-01537X⇒.....	9-78
CONVERTER HOUSING ATTACHMENT	
THREE SPEED.....	5-24
COOLANT HEATER STARTING AID	
TIER II ENGINE .....	2-104
COOLING	
⇒S/N A222E-01536X.....	2-114
TIER I ENGINE	
S/N A222E-01537X⇔S/N A222E-01562Z INC. 1564-1565.....	2-116
TIER II ENGINE	
S/N A222E-01563Z⇒ EXC. 1564-1565 .....	2-118
CORROSION RESISTOR .....	2-76
COUNTERWEIGHT .....	1-50
CYLINDER ASSEMBLY	
FOLDING CLAMPING	
INTERMODAL HANDLER.....	12-41
<b>D</b>	
DAMPENING CYLINDER	
⇒S/N A222E-01532X.....	11-44
S/N A222E-01533X⇒.....	11-46
DAMPENING CYLINDER ATTACHING PARTS .....	11-42
DIFFERENTIAL AND CARRIER	
⇒S/N A222E-01536X.....	6-2
DIFFERENTIAL CARRIER.....	6-10
DIRECTIONAL VALVE	
⇒S/N A222E-01532X.....	11-28
DRIVE AXLE	
⇒S/N A222E-01536X.....	6-6
DRIVE PULLEY	
AIR COMPRESSOR.....	2-8

**TABLE OF CONTENTS (Continued)**

DESCRIPTION	PAGE
<b>D (continued)</b>	
WATER PUMP .....	2-56
DRIVE TIRE AND WHEEL	
18.00 X 25 X 40 PLY PREMIUM	
RS45-30CH, RS45-27IH .....	13-4
18.00 X 33 X 32 PLY PREMIUM	
RS46-33CH, RS46-36CH, RS46-30IH, RS46-33IH .....	13-6
STANDARD	
RS45-30CH, RS45-27IH .....	13-2
DRIVE TRAIN	
FRONT .....	2-12
<b>E</b>	
ELECTRICAL ACCESSORIES	
TIER II ENGINE .....	2-102
ELECTRICAL SYSTEM	
CONTAINER HANDLER .....	12-22
INTERMODAL HANDLER	
SHEET 1 OF 2 .....	12-62
SHEET 2 OF 2 .....	12-64
TIER I ENGINE, WITH ELME ATTACHMENT	
OPERATOR COMPARTMENT, SHEET 2 OF 2	
S/N A222E-01537X⇒ .....	4-98
OPERATOR COMPARTMENT, SHEET 1 OF 2	
S/N A222E-01537X⇒ .....	4-94
SHEET 1 OF 2	
S/N A222E-01537X⇒ .....	4-88
SHEET 2 OF 2	
S/N A222E-01537X⇒ .....	4-92
TIER II ENGINE, WITH ELME ATTACHMENT	
OPERATOR COMPARTMENT, SHEET 1 OF 2	
S/N A222E-01563Z⇒ EXC. 1564-1565 .....	4-106
OPERATOR COMPARTMENT, SHEET 2 OF 2	
S/N A222E-01563Z⇒ EXC. 1564-1565 .....	4-108
SHEET 1 OF 2	
S/N A222E-01563Z⇒ EXC. 1564-1565 .....	4-100
SHEET 2 OF 2	
S/N A222E-01563Z⇒ EXC. 1564-1565 .....	4-104
ELECTRONIC FOOT PEDAL MOUNT	
TIER II ENGINE	
S/N A222E-01563Z⇒ EXC. 1564-1565 .....	3-18
ENGINE ASSEMBLY .....	2-4
ENGINE MOUNT .....	2-112
EXHAUST	
⇒S/N A222E-01536X .....	2-122
S/N A222E-01537X⇒ .....	2-124
TIER I ENGINE	
S/N A222E-01538X⇔S/N A222E-01562Z INC. 1564-1565 .....	2-126
TIER II ENGINE	
S/N A222E-01563Z⇒ EXC. 1564-1565 .....	2-128

## TABLE OF CONTENTS (Continued)

DESCRIPTION	PAGE
<b>E (continued)</b>	
EXHAUST CONNECTION	
TIER I ENGINE.....	2-84
EXHAUST MANIFOLD	
TIER I ENGINE.....	2-62
TIER II ENGINE.....	2-64
EXTENSION ATTACHMENT.....	11-12
EXTENSION CYLINDER BOOM	
⇒S/N A222E-01532X.....	10-10
S/N A222E-01533X⇒.....	10-12
<b>F</b>	
FAN	
TIER I ENGINE.....	2-28
TIER II ENGINE.....	2-30
FAN DRIVE	
TIER I ENGINE.....	2-20
TIER II ENGINE.....	2-22
FENDER AND RAIL	
S/N A222E-01517⇔S/N A222E-01536X.....	1-32
S/N A222E-01537X⇒.....	1-34
⇒S/N A222E-1516.....	1-30
FLOW AMPLIFIER	
⇒S/N A222E-01536X.....	7-18
FLOW VALVE.....	9-52
FLYWHEEL	
TIER I ENGINE.....	2-32
FOOT ASSEMBLY	
INTERMODAL HANDLER.....	12-46
FREE TILT ARRANGEMENT.....	11-24
FRONT ENGINE SUPPORT.....	2-18
FUEL FILTER	
TIER I ENGINE.....	2-24
TIER II ENGINE.....	2-26
FUEL FILTER PLUMBING	
TIER II ENGINE.....	2-100
FUEL TANK AND FUEL SYSTEM	
TIER I ENGINE	
S/N A222E-01537X⇔S/N A222E-01562Z INC. 1564-1565.....	1-46
TIER II ENGINE	
S/N A222E-01563Z⇒ EXC. 1564-1565.....	1-48
FUEL TANK AND PLATFORM	
⇒S/N A222E-01536X.....	1-42
S/N A222E-01537X⇒.....	1-44
<b>G</b>	
GEAR REDUCER AND ADAPTER	
⇒S/N A222E-01532X.....	11-30



**TABLE OF CONTENTS (Continued)**

DESCRIPTION	PAGE
<b>H</b>	
HEATER .....	1-28
HOOD AND COVERS	
SLIDING CAB	
TIER II ENGINE	
S/N A222E-01563Z ⇒ EXC. 1564-1565 .....	1-10
STANDARD CAB	
TIER II ENGINE	
S/N A222E-01563Z ⇒ EXC. 1564-1565 .....	1-8
TIER I ENGINE	
S/N A222E-01537X ⇔ S/N A222E-01562Z INC. 1564-1565 .....	1-6
HOOD, COVERS AND SOUND DAMPENING	
⇒ S/N A222E-01536X .....	1-2
HUB AND SHAFT .....	6-20
HYDRAULIC CYLINDER	
INTERMODAL HANDLER .....	12-52-40
HYDRAULIC CYLINDER AND ATTACHING PARTS	
CONTAINER HANDLER .....	12-20
INTERMODAL HANDLER .....	12-44
HYDRAULIC DAMPENING	
LOCKING .....	11-20
NON-LOCKING .....	11-18
HYDRAULIC LIFT SYSTEM	
⇒ S/N A222E-01536X .....	9-8
HYDRAULIC MOTOR	
⇒ S/N A222E-01536X .....	11-10
HYDRAULIC MOTOR AND TRANSMISSION ASSEMBLY .....	12-8
HYDRAULIC OIL FILTER .....	9-42
HYDRAULIC PILOT SYSTEM	
⇒ S/N A222E-01536X .....	9-4
HYDRAULIC PUMP	
HOIST AND STEERING	
⇒ S/N A222E-01536X .....	9-58
HOIST AND STEERING END COVER	
⇒ S/N A222E-01536X .....	9-60
PILOT AND SLIDING CAB	
⇒ S/N A222E-01536X .....	9-44
SPREADER AND COOLING	
⇒ S/N A222E-01536X .....	9-46
HYDRAULIC SPREADER	
⇒ S/N A222E-01536X .....	9-12
HYDRAULIC STOP KIT .....	12-2
HYDRAULIC SUPPLY AND RETURN	
WITH SLIDING CAB AND HYDRAULIC OIL COOLER	
TIER II ENGINE	
S/N A222E-01563Z ⇒ EXC. 1564-1565 .....	9-36
HYDRAULIC SYSTEM	
CONTAINER HANDLER .....	12-24
INTERMODAL HANDLER	
SHEET 1 OF 3 .....	12-56
SHEET 2 OF 3 .....	12-58
SHEET 3 OF 3 .....	12-60

## TABLE OF CONTENTS (Continued)

DESCRIPTION	PAGE
<b>H (continued)</b>	
SHEET 1 OF 2	
TIER I ENGINE	
S/N A222E-01537X⇒.....	9-20
TIER II ENGINE	
S/N A222E-01563Z⇒ EXC. 1564-1565 .....	9-24
SHEET 2 OF 2	
TIER I ENGINE	
S/N A222E-01537X⇒.....	9-28
TIER II ENGINE	
S/N A222E-01563Z⇒ EXC. 1564-1565 .....	9-32
HYDRAULIC TANK AND PLATFORM	
⇒S/N A222E-01536X.....	1-36
S/N A222E-01537X⇒.....	1-40
HYDRAULIC VALVE	
INTERMODAL HANDLER	
SHEET 1 OF 2 .....	12-36
SHEET 2 OF 2 .....	12-38
<b>I</b>	
INLET SECTION	
⇒S/N A222E-01536X.....	9-74
S/N A222E-01537X⇒.....	9-84
INNER BOOM .....	10-4
INSTRUMENT PANEL	
TIER I ENGINE	
⇒S/N A222E-1532.....	4-6
S/N A222E-1533⇒.....	4-8
TIER II ENGINE	
S/N A222E-01563Z⇒ EXC. 1564-1565 .....	4-10
INTAKE MANIFOLD	
TIER II ENGINE.....	2-60
<b>L</b>	
LABELS AND PAINT .....	1-54
LEG ASSEMBLY	
INTERMODAL HANDLER .....	12-48
LEG ATTACHMENT	
INTERMODAL HANDLER .....	12-50
LIFTING BRACKET .....	2-34
LIFTING VALVE.....	9-54
LIGHT ARRANGEMENT	
⇒S/N A222E-1536 .....	4-18
LIMITATOR ARRANGEMENT	
⇒S/N A222E-1536 .....	4-14
S/N A222E-1537⇒ .....	4-16
LIMITATOR PANEL	
⇒S/N A222E-1536 .....	4-12

**TABLE OF CONTENTS (Continued)**

DESCRIPTION	PAGE
<b>M</b>	
MAIN HYDRAULIC VALVES.....	9-64
MAIN WIRING DIAGRAM	
FRAME	
SHEET 1 OF 2	
⇒S/N A222E-1532 .....	4-72
SHEET 2 OF 2	
⇒S/N A222E-1532 .....	4-76
MAINFRAME	
CONTAINER HANDLER.....	12-18
INTERMODAL HANDLER .....	12-54
MANUAL PUMP	
⇒S/N A222E-01536X.....	9-48
MOTION CONTROL VALVE	
⇒S/N A222E-01532X.....	9-50
<b>O</b>	
OIL COOLER LUBE	
TIER I ENGINE.....	2-36
OIL COOLER WATER PLUMBING	
TIER I ENGINE.....	2-78
TIER II ENGINE.....	2-80
OIL FILLER ARRANGEMENT	
HAND COVER	
TIER II ENGINE .....	2-48
TIER I ENGINE.....	2-44
TIER II ENGINE.....	2-46
OIL FILTER	
TIER II ENGINE.....	2-42
OIL FILTER AND COOLER HEAD	
TIER I ENGINE.....	2-38
TIER II ENGINE.....	2-40
OIL MANIFOLD	
TIER I ENGINE.....	2-50
OIL PAN	
TIER II ENGINE.....	2-6
OPERATOR COMPARTMENT .....	1-26
OPERATOR COMPARTMENT MOUNTING	
STANDARD CAB	
S/N A222E-01563Z⇒ EXC. 1564-1565.....	1-18
OPERATOR COMPARTMENT WIRING DIAGRAM	
EMPTY CONTAINER HANDLER	
SHEET 1 OF 2	
⇒S/N A222E-1532 .....	4-78
SHEET 2 OF 2	
⇒S/N A222E-1532 .....	4-82
OUTER BOOM.....	10-2
OUTLET SECTION	
⇒S/N A222E-01536X.....	9-68
S/N A222E-01537X⇒.....	9-80

## TABLE OF CONTENTS (Continued)

DESCRIPTION	PAGE
<b>P</b>	
PARK BRAKE	
⇒S/N A222E-1511 .....	8-12
S/N A222E-1512⇔S/N A222E-01536X.....	8-14
PILOT VALVE	
⇒S/N A222E-01536X.....	9-6
POWER TILT ARRANGEMENT .....	11-22
POWER TILT CYLINDER	
⇒S/N A222E-01532X.....	11-50
PUMP .....	8-2
PUMP DRIVE AND SHAFT.....	5-12
<b>R</b>	
RADIATOR	
TIER II ENGINE	
S/N A222E-01563Z⇒ EXC. 1564-1565.....	2-120
RADIATOR PLUMBING	
TIER II ENGINE.....	2-90
REGULATING PRESSURE VALVE AND CHARGE PUMP .....	5-8
REGULATOR	
⇒S/N A222E-01536X.....	9-62
RELAY VALVE	
⇒S/N A222E-01536X.....	8-4
ROTATOR AND SPREADER HYDRAULIC VALVES.....	11-38
ROTATOR ASSEMBLY	
CONTAINER HANDLER	
DUAL SPEED.....	12-16
INTERMODAL HANDLER.....	12-42
ROTATOR ATTACHMENT	
⇒S/N A222E-01536X.....	11-32
S/N A222E-01537X⇒.....	11-34
ROTATOR FLOW VALVE.....	11-26
ROTATOR HYDRAULIC.....	11-2
<b>S</b>	
SHIFT CONTROL.....	5-2
SHUTTLE VALVE	
⇒S/N A222E-01536X.....	8-8
SIDE-SHIFT CYLINDER .....	12-10
⇒S/N A222E-01532X.....	11-48
SLIDING CAB ARRANGEMENT	
TIER I ENGINE	
⇒S/N A222E-01562Z INC. 1564-1565 .....	1-12
TIER II ENGINE	
S/N A222E-01563Z⇒ EXC. 1564-1565.....	1-14
SLIDING CYLINDER	
⇒S/N A222E-01536X.....	1-22
S/N A222E-01563Z⇒ EXC. 1564-1565.....	1-24
SPOOL SECTION	
S/N A222E-01537X⇒.....	9-86
SPREADER CONTROL BOX	
⇒S/N A222E-1532 .....	4-21

**TABLE OF CONTENTS (Continued)**

DESCRIPTION	PAGE
<b>S (continued)</b>	
SPREADER HYDRAULIC ATTACHMENT .....	11-6
STARTER MOTOR	
TIER II ENGINE .....	2-88
STEER TIRE AND WHEEL	
18.00 X 25 X 40 PLY PREMIUM	
RS46-33CH, RS46-36CH, RS46-30IH, RS46-33IH .....	13-10
18.00 X 33 X 32 PLY PREMIUM	
RS46-33CH, RS46-36CH, RS46-30IH, RS46-33IH .....	13-12
STANDARD	
RS45-30CH, RS45-27IH .....	13-8
STEERING COLUMN.....	7-10
STEERING CYLINDER	
⇒S/N A222E-01532X.....	7-14
S/N A222E-01533X⇒.....	7-16
STEERING PUMP	
⇒S/N A222E-01536X.....	7-12
STEERING SYSTEM .....	7-2
SUSPENSION SEAT .....	1-52
<b>T</b>	
THERMOSTAT.....	2-14
THERMOSTAT HOUSING.....	2-66
THROTTLE AND BRAKE ARRANGEMENT	
SHEET 1 OF 2	
TIER I ENGINE	
S/N A222E-01537X⇒.....	3-2
TIER II ENGINE	
S/N A222E-01563Z⇒ EXC. 1564-1565 .....	3-10
SHEET 2 OF 2	
TIER I ENGINE	
S/N A222E-01537X⇒.....	3-6
TIER II ENGINE	
S/N A222E-01563Z⇒ EXC. 1564-1565 .....	3-14
THROTTLE PEDAL	
TIER I ENGINE	
⇒S/N A222E-01562Z INC. 1564-1565 .....	3-16
THROTTLE PEDAL ASSEMBLY	
ELECTRONIC	
TIER II ENGINE	
S/N A222E-01563Z⇒ EXC. 1564-1565 .....	3-20
TIPPING CYLINDER	
RS45-30CH, RS45-27IH	
⇒S/N A222E-01562Z INC. 1564-1565 .....	1-20
TRAIL AXLE	
⇒S/N A222E-01536X.....	7-6
S/N A222E-01537X⇒.....	7-8
TRAIL AXLE AND ATTACHING PARTS .....	7-4
TRANSMISSION CASE AND REAR COVER .....	5-26
TRANSMISSION LINES	

## TABLE OF CONTENTS (Continued)

DESCRIPTION	PAGE
<b>T (continued)</b>	
⇒S/N A222E-01562Z INC. 1564-1565.....	5-4
TIER I AND TIER II ENGINE	
S/N A222E-01563Z⇒ EXC. 1564-1565 .....	5-6
TREADLE VALVE	
⇒S/N A222E-01536X.....	8-6
TURBOCHARGER	
TIER I ENGINE.....	2-52
TIER II ENGINE.....	2-54
TURBOCHARGER PLUMBING	
TIER I ENGINE.....	2-68
TIER II ENGINE.....	2-70
TURBOCHARGER WATER PLUMBING	
TIER I ENGINE.....	2-74
TWIST LOCK.....	12-28
TWIST LOCK ARRANGEMENT.....	11-16
TWIST LOCK ATTACHMENT.....	12-26
TWIST LOCK CYLINDER.....	12-30
⇒S/N A222E-01532X.....	11-40
<b>U</b>	
UNIVERSAL SHAFT	
S/N A222E-01537X⇒.....	6-14
<b>V</b>	
VALVE	
INTERMODAL HANDLER	
SHEET 1 OF 2 .....	12-32
SHEET 2 OF 2 .....	12-34
ROTATOR WITH DUAL SPEED.....	12-12
SPREADER TYPE.....	12-14
VALVE COVER.....	2-72
VIBRATION DAMPER	
TIER II ENGINE.....	2-92
<b>W</b>	
WATER PUMP.....	2-82
WEAR PADS.....	12-4
WHEEL AND DRIVE PLATE.....	5-34
WHEEL BRAKE	
WET	
⇒S/N A222E-01536X.....	8-16
WIPER MOTOR.....	4-4
WIRE HARNESS	
BOOM LIGHT.....	4-29
CAB	
⇒S/N A222E-1532.....	4-56
CONTROL ATTACHMENT	
⇒S/N A222E-1532.....	4-50
CONTROL VALVE AND OIL FILTER RESTRICTION TRANSMISSION	

**TABLE OF CONTENTS (Continued)**

DESCRIPTION	PAGE
<b>W</b> (continued)	
S/N A222E-01537X⇒ .....	4-35
⇒S/N A222E-1536.....	4-34
CONTROLLER AND SLIDING CAB	
⇒S/N A222E-01536X .....	4-52
S/N A222E-01537X⇒ .....	4-53
ENGINE COMPARTMENT .....	4-31
EXTENSION .....	4-47
FRONT LIGHT EXTENSION	
S/N A222E-01537X⇒ .....	4-45
⇒S/N A222E-1536.....	4-44
FRONT LIGHTS AND KRUGER DEVICE	
⇒S/N A222E-1536.....	4-32
FRONT LIGHTS AND LOAD LIMITER	
S/N A222E-01537X⇒ .....	4-33
FRONT WIPER MOTOR.....	4-60
HYDRAULIC	
LEFT HAND	
S/N A222E-01537X⇒.....	4-38
⇒S/N A222E-1536 .....	4-36
RIGHT HAND	
S/N A222E-01537X⇒.....	4-41
⇒S/N A222E-1536 .....	4-40
HYDRAULIC CONTROLLER	
⇒S/N A222E-1532.....	4-51
IDLE VALIDATION SWITCH	
S/N A222E-01537X⇒ .....	4-70
INDICATOR LIGHT ATTACHMENT	
SHEET 1 OF 2	
⇒S/N A222E-1532 .....	4-24
SHEET 2 OF 2	
⇒S/N A222E-1532 .....	4-25
INTERMODAL HANDLER .....	4-27
⇒S/N A222E-1532.....	4-58
JOYSTICK	
⇒S/N A222E-1532.....	4-49
MARKER LIGHT EXTENSION	
RH FRONT.....	4-46
MARKER LIGHT EXTENSION FRONT	
LEFT HAND .....	4-42
REAR LIGHT, BACK-UP ALARM, AND FUEL LEVEL .....	4-30
ROTATOR CONTROL	
⇒S/N A222E-1532.....	4-68
SLIDING CAB	
S/N A222E-01537X⇒ .....	4-62
⇒S/N A222E-1536.....	4-61
SPREADER	
TYPE 1	
⇒S/N A222E-1532 .....	4-63
TYPE 2	
⇒S/N A222E-1532 .....	4-66

## TABLE OF CONTENTS (Continued)

DESCRIPTION	PAGE
<b>W</b> (continued)	
SPREADER CONTROL	
TYPE 1	
⇒S/N A222E-1532 .....	4-59
TYPE 2	
⇒S/N A222E-1532 .....	4-64
STANDARD SPREADER	
TYPE 1 .....	4-26
TYPE 2 .....	4-28
TRANSMISSION CONTROL .....	4-48
WORKLIGHT EXTENSION .....	4-43
WIRING ACCESSORIES	
ELECTRONIC CONTROL MODULE	
TIER II ENGINE .....	2-86



**ABBREVIATIONS QUICK REFERENCE SHEET**

Listed below are abbreviations used in parts manuals to denote the following expressions:

<b>TERM</b>	<b>DEFINITION</b>	<b>TERM</b>	<b>DEFINITION</b>
Amp	Amperes	FRE	Freezer Environment
AR	As Required	in.	inches
BDI	Battery Discharge Indicators	LPG	Liquefied Petroleum Gas
BWI	Brush Wear Indicator	MAP	Manifold Absolute Pressure
CE	Communicator End	mm	millimeters
CRE	Corrosive Environment	MSTS	Microprocessor Spark Timing System
D/B	Date Break	NPT	National Pipe Threads
dbA	Decibel "A" Scale	O/S	Oversize
DE	Drive End	PTO	Power Take Off
ECH	Empty Container Handler	RPM	Revolutions per Minute
ECH-3	Empty Container Handler - 3 High Stacking	S/N	Serial Number
ECH-4	Empty Container Handler - 4 High Stacking	TMM	Truck Management Module
ECH-5	Empty Container Handler - 5 High Stacking	UL Type D	Diesel-Powered Safety Rating
ECH-6	Empty Container Handler - 6 High Stacking	UL Type DS	Diesel-Powered Safety Rating
ECH-7	Empty Container Handler - 7 High Stacking	UL Type E	Battery-Powered Safety Rating
ECM	Electronic Control Module	UL Type EE	Battery-Powered Safety Rating
ECN	Engineering Change Notice	UL Type ES	Battery-Powered Safety Rating
EEPROM	Electrically Erasable Programmable Read Only Memory	UL Type G	Gasoline-Powered Safety Rating
EPROM	Electrically Programmable Read Only Memory	UL Type GS	Gasoline-Powered Safety Rating
		UL Type LP	Gas-Powered Safety Rating
		UL Type LPS	LP Gas-Powered Safety Rating
		U/S	Undersize
		UL	Underwriters Laboratory
		V	Volts

## HOW TO USE THE ILLUSTRATED PARTS MANUAL

This parts manual describes and illustrates assemblies, subassemblies, and detail parts needed for service replacement.

The different constructions are indicated by keys and footnotes. The callouts correspond to descriptions found on the the next page.

**HYSTER**  
UNIT CODE G160 EUROPE

06/2001

3 → **TABLE OF CONTENTS** → 4

DESCRIPTION	PAGE
ACCELERATOR/MONOTROL PEDAL	5-2
BACKUP ALARM	
BATTERY CONNECTOR	
BATTERY ROLLER AND	
BRAKE ASSEMBLY	
BRAKE MASTER CYLINDER	
BRAKE PEDAL LINKAGE	
CARRIAGE	
THREE STAGE FULL	
TWO STAGE FULL FR	
TWO STAGE LIMITED	
CONTROL VALVE	
COUNTERWEIGHT	
DASH DISPLAY	
DC-DC CONVERTER	

1 →

**SECTION 11 NUMERICAL INDEX**

PART NO.	PG	ITEM	PART NO.	PG	ITEM	PART NO.	PG	ITEM	PART NO.	PG	ITEM
138	5-9	31	15176	1-3	6	16481	6-25	3	16882	9-7	28
139	5-9	32	15176	1-4	45	16481	6-25	4	16883	6-25	8
12921	5-13	32	15176	1-3	6	16481	6-25	53	16883	6-25	5
14269	5-5	8	15176	1-4	45	16481	6-25	65	16882	7-5	25
						16483	6-25	16		8-5	24
						16484	6-25	48		9-5	19
							6-11	3	16989	6-25	10
							6-11	9	17051	7-5	19
							6-13	101		8-5	13
							6-13	7		9-5	13
							6-25	7	17081	6-25	6
							6-25	8	17151	3-9	24
							6-25	11		3-11	26
							6-25	20		6-25	22
							9-7	7	17775	6-25	22
							27				

**SECTIONS**

1	ELEC
2	
3	ST
4	
5	BRAKE/ACCEL
6	HYD
7	MAST-TWO STAGE LI
8	MAST-THREE STAGE
9	MAST-TWO STAGE
10	
11	NI

2 →

**TRANSMISSION HOUSING**  
(⇒ S/N G160-2628)

10 →

KEY:  
A: Diesel  
B: Gasoline and LPG

ITEM	PART NO.	DESCRIPTION	QTY	A	B
	2022547	Transmission	1	1	1
	2023329	Transmission	2	2	2
	2064270	Case	4	4	4
1	2023418	Bearing Cap	1	1	1
2	206426	Washer	1	1	1
3	293692	Capscrew	2	2	2
4	2021390	Cover	4	4	4
5	1371856	Collar Pin	1	1	1
6	2021329	O-Ring	4	4	4
7	2021915	Plug	22	22	22
8	2021675	Housing	39	39	39
9	2021336	Pin	1	1	1
10	2021336	Capscrew	1	1	1
11	287880	Lockwasher	8	8	8
12	292692	Hydraulic Pump (See Figure 6-6)	8	8	8
13		Gasket	1	1	1
14	2021345	Capscrew	1	1	1
15	214364	Washer	1	1	1
16	286418	Temperature Switch	9	9	9
17	2021388	Breather	9	9	9
18	2021389	Dipstick	2	2	2
19	2021383	Capscrew	3	3	3
20	292515	Nut	3	3	3
21	136692	Capscrew	4	4	4
22	232527	Capscrew	4	4	4
23	292531	Lockwasher	4	4	4
24	292683	Capscrew	1	1	1
25	293637	Washer	1	1	1
26	296420	Washer	1	1	1
	996403	Transmission Kit (Include Item 7)			
	996405	Transmission Kit (Include Item 14)			

6 →

9 →

This Parts Manual is divided into 11 major sections which are listed above. Quick reference can be made by placing the right thumb on the tab of the desired section, bending the book pages to the corresponding tab.

©2001 HYSTER COMPANY  
See Service Manual for service procedures.  
3-15

HP990135

## HOW TO FIND THE DESIRED PART NUMBER

### WHEN THE PART NUMBER AND THE NEXT HIGHER ASSEMBLY IS NOT KNOWN:

1. Determine the function and application of the part required. Turn to the Sections Page. Choose the general area of reference most likely to include the part.
2. Turn to the section you chose. Use the Section Table of Contents to determine the assembly which would normally contain the part required. Then locate the part on the assembly breakdown page.

### WHEN THE PART NUMBER IS NOT KNOWN AND THE NEXT HIGHER ASSEMBLY IS KNOWN:

3. Determine the assembly the required part is used on. Turn to the Table of Contents on Page i.
4. Locate the assembly the required part is used on and turn to the page indicated for that assembly. Then locate the part on the assembly breakdown page.

### WHEN THE PART NUMBER IS KNOWN:

5. Use the Numerical Index on Page 14-1 to find the part number. Turn to the page listed and locate the part as indicated by the item number.

### GENERAL:

The assembly breakdowns include part numbers, descriptions, quantities required, keys and footnotes to help in selecting correct parts.

6. Five periods in the PART NO. column (. . . . .) indicate that the part is either *Not Serviced Separately* or there is a reference to another figure. A figure reference is denoted by a pointing hand followed by a figure number in the DESCRIPTION column (☞ Figure 10)
7. Keys are used to show two or more similar assemblies, RH and LH assembly parts, etc. Select the appropriate key, "A", "B", "C", "D", or "E" and the corresponding quantity column to find the required parts. Two periods in the QTY column (..) indicate that the part is not used for that assembly.
8. Indented descriptions under the DESCRIPTION column are used to indicate assemblies and subparts of assemblies. In the example on the

previous page, *BEARING CAP* (Item 2) is a subpart of the major assembly *CASE*.

9. Quantities shown are for one assembly. The quantities of the subpart *BEARING CAP* are indicated as two and two. This means two per *CASE* assembly.
10. Serial number breaks identify the most current parts information and are shown as follows:
  - ⇒ **S/N D001H-2628**  
Indicates last serial number affected.
  - S/N D001H-2629** ⇒  
Indicates the first serial number affected.
  - S/N D001H-1553 ⇔ S/N D001H-3291**  
Indicates a range of serial numbers affected.

ECN numbers for pending serial numbers are shown to allow for the inclusion of the most current parts information and are identified as follows:

- ⇒ **S/N Pending Per ECN 63243**  
Indicates a pending serial number for last unit affected.
- S/N Pending Per ECN 63243** ⇒  
Indicates a pending serial number for first unit affected.

Date breaks are used to indicate when a change occurred but a subsequent serial number break was not recorded. This is an arbitrary date usually based on the ECN release and are identified as follows:

- ⇒ **D/B 3/00**  
Indicates that a change occurred sometime within that month for the item affected.
- D/B 3/00** ⇒  
Indicates that a change occurred sometime within that month for the item affected.
- D/B 3/00 ⇔ D/B 4/00**  
Indicates a range of production dates of the item affected.

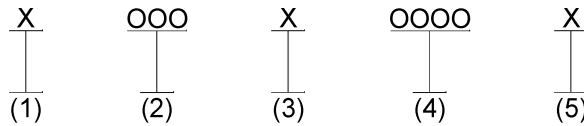
Contact your local dealer for Hyster lift trucks for serial number information for items with a ECN or a date break.

### ORDERING PARTS:

When ordering replacement parts, give the unit serial number, part number, name of part and quantity required.

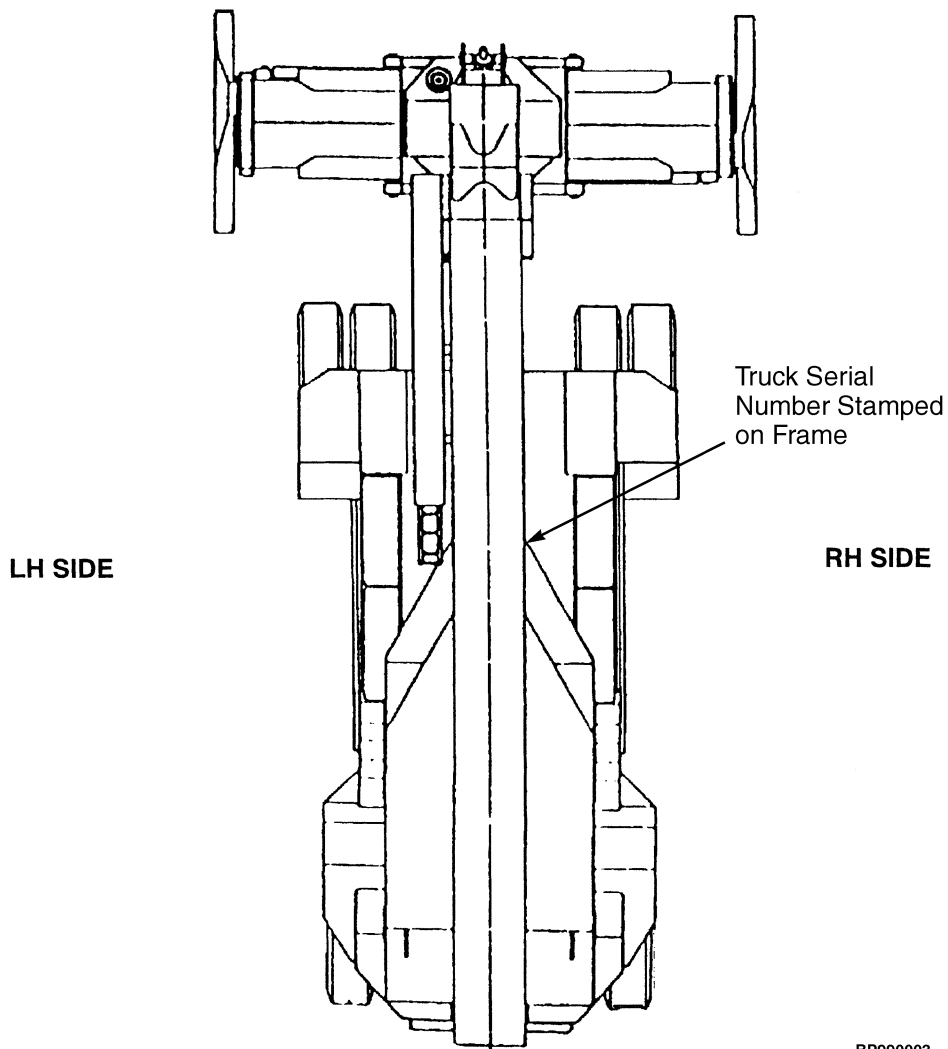
For any further information on parts, service, or ordering, consult your local dealer for Hyster lift trucks.

## IDENTIFICATION OF TRUCK SERIAL NUMBERS



- (1) and (2) The first letter and three numbers indicate the truck unit code.
- (3) The second letter indicates the plant of manufacture.
- (4) The four or five digit number indicates the production sequence number of the truck.
- (5) The final letter indicates the year of manufacture starting with "A" in 1957 and 1980. The letters "I", "O", and "Q" will not be used.

For pending serial numbers contact your local dealer for Hyster lift trucks.



Parts referred to in this book as right or left hand parts are in accordance with the illustration above.

---

## PUBLICATIONS

Every new lift truck is provided with an OPERATING MANUAL. This manual has information that the operator must know for inspection and operation of the lift truck.

SERVICE MAINTENANCE MANUALS, which provide service and overhaul procedures, and PARTS MANUALS with complete replacement part identification, are available at a nominal fee from your Hyster dealer to assist users in effectively maintaining Hyster lift trucks in a safe, useful condition. See the list below for information on ordering specific publications for this model lift truck.

PUBLICATION	HYSTER PART NUMBER
<b>Operating Manual</b> .....	1492958
<b>Service Manual (Complete)</b> .....	1495197
<b>Parts Manual</b> .....	897858



**1**

**FRAME**

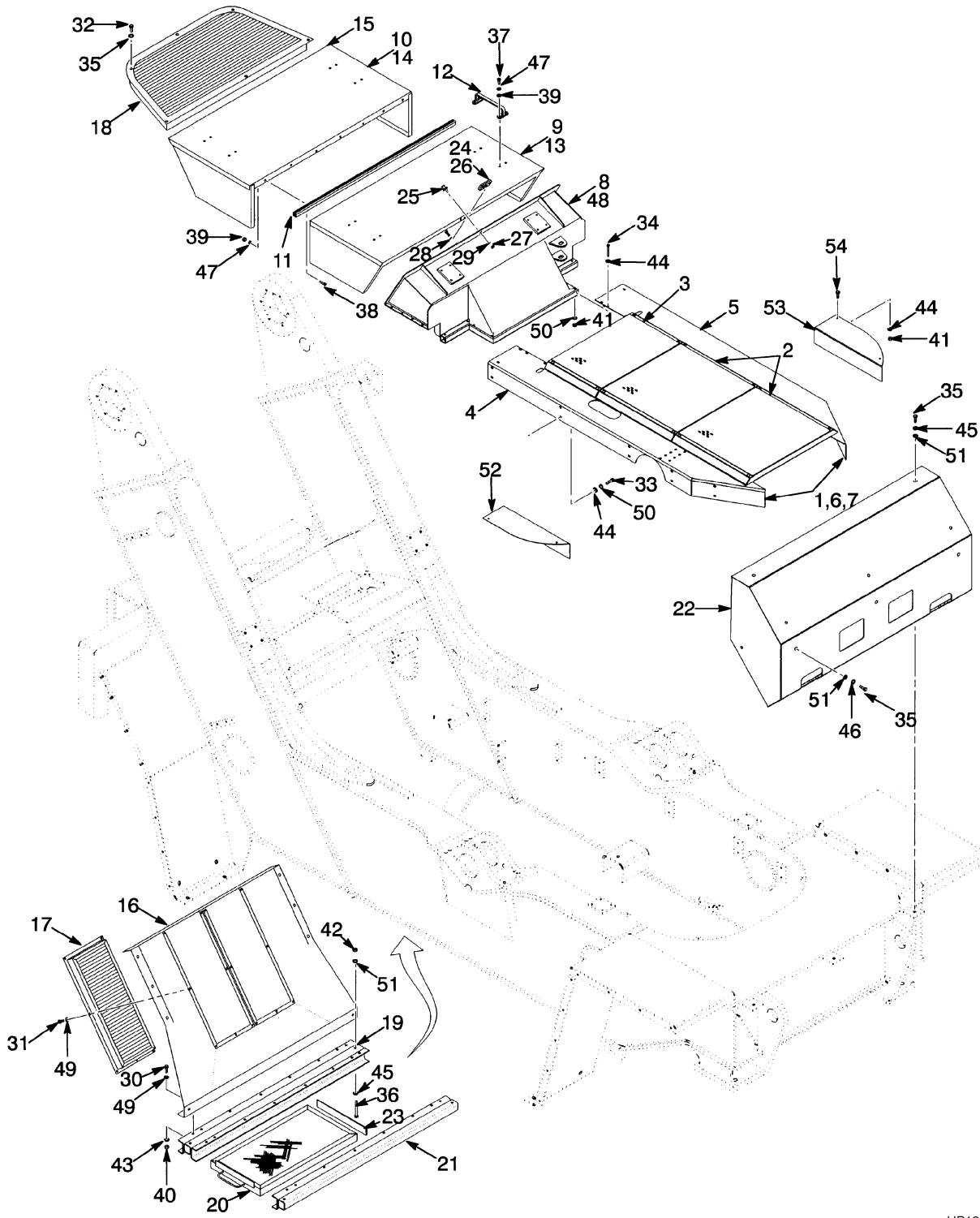




**SECTION 1**  
**FRAME**

DESCRIPTION	PAGE
CAB TILT	
RS45-30CH, RS45-27IH	
⇒S/N A222E-01562Z INC. 1564-1565 .....	1-16
COUNTERWEIGHT .....	1-50
FENDER AND RAIL	
S/N A222E-01517⇔S/N A222E-01536X.....	1-32
S/N A222E-01537X⇒.....	1-34
⇒S/N A222E-1516 .....	1-30
FUEL TANK AND FUEL SYSTEM	
TIER I ENGINE	
S/N A222E-01537X⇔S/N A222E-01562Z INC. 1564-1565.....	1-46
TIER II ENGINE	
S/N A222E-01563Z⇒ EXC. 1564-1565 .....	1-48
FUEL TANK AND PLATFORM	
⇒S/N A222E-01536X.....	1-42
S/N A222E-01537X⇒.....	1-44
HEATER .....	1-28
HOOD AND COVERS	
SLIDING CAB	
TIER II ENGINE	
S/N A222E-01563Z⇒ EXC. 1564-1565 .....	1-10
STANDARD CAB	
TIER II ENGINE	
S/N A222E-01563Z⇒ EXC. 1564-1565 .....	1-8
TIER I ENGINE	
S/N A222E-01537X⇔S/N A222E-01562Z INC. 1564-1565.....	1-6
HOOD, COVERS AND SOUND DAMPENING	
⇒S/N A222E-01536X.....	1-2
HYDRAULIC TANK AND PLATFORM	
⇒S/N A222E-01536X.....	1-36
S/N A222E-01537X⇒.....	1-40
LABELS AND PAINT .....	1-54
OPERATOR COMPARTMENT .....	1-26
OPERATOR COMPARTMENT MOUNTING	
STANDARD CAB	
S/N A222E-01563Z⇒ EXC. 1564-1565 .....	1-18
SLIDING CAB ARRANGEMENT	
TIER I ENGINE	
⇒S/N A222E-01562Z INC. 1564-1565 .....	1-12
TIER II ENGINE	
S/N A222E-01563Z⇒ EXC. 1564-1565 .....	1-14
SLIDING CYLINDER	
⇒S/N A222E-01536X.....	1-22
S/N A222E-01563Z⇒ EXC. 1564-1565.....	1-24
SUSPENSION SEAT .....	1-52
TIPPING CYLINDER	
RS45-30CH, RS45-27IH	
⇒S/N A222E-01562Z INC. 1564-1565 .....	1-20

## HOOD, COVERS AND SOUND DAMPENING (Figure 1-1) (⇒S/N A222E-01536X)



HP120150

## HOOD, COVERS AND SOUND DAMPENING

(⇒S/N A222E-01536X)

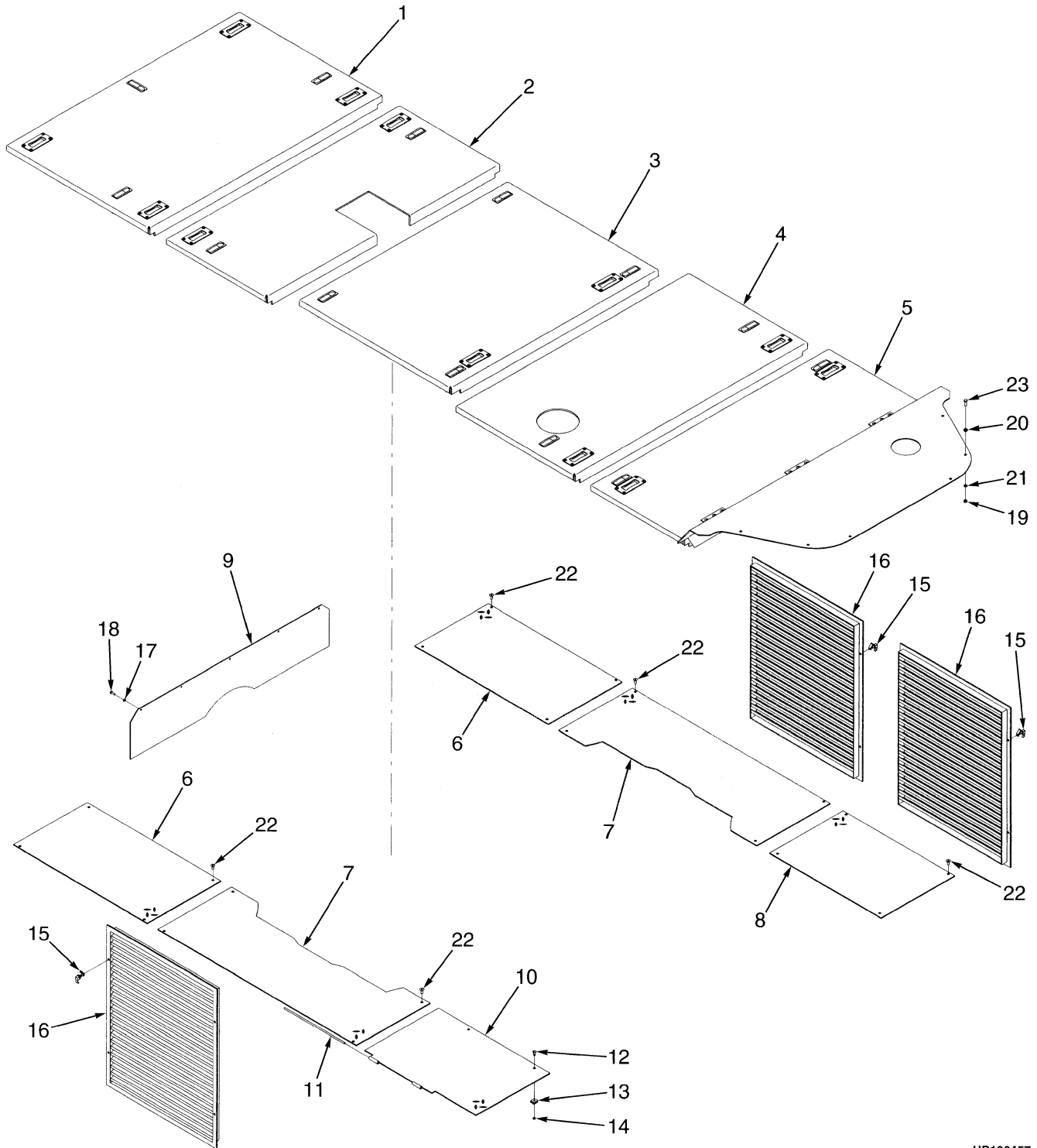
ITEM	PART NO.	DESCRIPTION	QTY
1	886740	Cover (Front).....	1
2	886741	Cover.....	2
3	889823	Cover.....	1
4	888927	Support (RH).....	1
5	888926	Support (LH).....	1
6	889790	U-Nut.....	12
7	296247	Screw.....	12
8	888400	Hood (Front).....	1
9	889791	Hood (Intermediate).....	1
10	889792	Hood (Rear).....	1
11	885803	Hinge.....	1
12	886777	Handle.....	4
13	886782	Seal.....	2
14	888415	Seal.....	2
15	888416	Seal.....	1
16	889780	Support (Rear).....	1
17	885781	Support (Rear).....	2
18	885785	Support (Rear).....	1
19	885798	Support.....	1
20	889782	Cover (Lower).....	2
21	885836	Support (Lower).....	1
22	1478659	Cover (Front).....	1
23	885977	Seal.....	1
24	888405	Latch.....	1
25	889781	Bolt.....	1
26	16378	Capscrew.....	4
27	15056	Nut.....	1
28	15154	Lockwasher.....	4
29	15156	Lockwasher.....	1
30	292501	Capscrew.....	30
31	287851	Capscrew.....	22
32	136681	Capscrew.....	50
33	292513	Capscrew.....	20
34	292521	Capscrew.....	8
35	292527	Capscrew.....	8
36	292537	Capscrew.....	8
37	296196	Capscrew.....	16
38	292672	Capscrew.....	14
39	292667	Nut.....	30
40	239503	Nut.....	2
41	136692	Nut.....	20
42	216877	Nut.....	8
43	320157	Washer.....	2
44	320159	Washer.....	48
45	320161	Washer.....	13
46	320162	Washer.....	3
47	292678	Lockwasher.....	30
48	292680	Lockwasher.....	30
49	292681	Lockwasher.....	72
50	292682	Lockwasher.....	36
51	292683	Lockwasher.....	16

## HOOD, COVERS AND SOUND DAMPENING (⇒S/N A222E-01536X)

ITEM	PART NO.	DESCRIPTION	QTY
52	888146	Cover (RH).....	1
53	886442	Cover (LH).....	1
54	292514	Capscrew.....	4



## HOOD AND COVERS (Figure 1-2) TIER I ENGINE (S/N A222E-01537X↔S/N A222E-01562Z INC. 1564-1565)



HP120457

**Please Click Here To Download The Complete Manual**  
**Download Other Manuals**  
**If Having Any Questions Feel Free To Contact us**

**[admin@servicemanualbit.com](mailto:admin@servicemanualbit.com)**