



# Operation and Maintenance Manual

---

## **TH220B and TH330B Telehandlers**

---

S/N TBF00100 & After  
S/N TBG00100 & After

*Keep this manual with machine at all times.*

---



## Important Safety Information

Most accidents that involve product operation, maintenance and repair are caused by failure to observe basic safety rules or precautions. An accident can often be avoided by recognizing potentially hazardous situations before an accident occurs. A person must be alert to potential hazards. This person should also have the necessary training, skills and tools to perform these functions properly.

**Improper operation, lubrication, maintenance or repair of this product can be dangerous and could result in injury or death.**

**Do not operate or perform any lubrication, maintenance or repair on this product, until you have read and understood the operation, lubrication, maintenance and repair information.**

Safety precautions and warnings are provided in this manual and on the product. If these hazard warnings are not heeded, bodily injury or death could occur to you or to other persons.

The hazards are identified by the "Safety Alert Symbol" and followed by a "Signal Word" such as "DANGER", "WARNING" or "CAUTION". The Safety Alert "WARNING" label is shown below.



The meaning of this safety alert symbol is as follows:

**Attention! Become Alert! Your Safety is Involved.**

The message that appears under the warning explains the hazard and can be either written or pictorially presented.

Operations that may cause product damage are identified by "NOTICE" labels on the product and in this publication.

**Caterpillar cannot anticipate every possible circumstance that might involve a potential hazard. The warnings in this publication and on the product are, therefore, not all inclusive. If a tool, procedure, work method or operating technique that is not specifically recommended by Caterpillar is used, you must satisfy yourself that it is safe for you and for others. You should also ensure that the product will not be damaged or be made unsafe by the operation, lubrication, maintenance or repair procedures that you choose.**

The information, specifications, and illustrations in this publication are on the basis of information that was available at the time that the publication was written. The specifications, torques, pressures, measurements, adjustments, illustrations, and other items can change at any time. These changes can affect the service that is given to the product. Obtain the complete and most current information before you start any job. Caterpillar® dealers have the most current information available.



**When replacement parts are required for this product Caterpillar recommends using Caterpillar replacement parts or parts with equivalent specifications including, but not limited to, physical dimensions, type, strength and material.**

**Failure to heed this warning can lead to premature failures, product damage, personal injury or death.**

# EFFECTIVITY PAGE

July 13, 2006 - A - Original Issue Of Manual

February 2, 2007 - B - Added Tier III information. Revised pages 9, 18, 19, 35, 36, 109, 121, 137, 138, 139, 140, 142 and 143.

# EFFECTIVITY PAGE

## Table of Contents

### Foreword

Literature Information .....	5
Safety .....	5
Operation .....	5
Maintenance.....	5
Maintenance Intervals.....	5
Certified Engine Maintenance .....	5
Machine Capacity.....	5
Contact Information.....	6

### Safety Section

Safety Messages.....	7
Do Not Operate (1).....	9
Do Not Stand Under the Load (2) .....	10
No Hands (3).....	10
Forks (5).....	11
Do Not Weld On The ROPS/FOPS Structure (6) .....	12
No Access Platform (7) .....	12
Seat Belt (8) .....	13
Engine Coolant (9) .....	13
Low Bridge (10).....	13
Avoid Power Lines (11).....	14
Jump Start Cables (12) .....	14
Ether (13) .....	14
Impaling Hazard (14).....	15
Crushing Hazard (15).....	15
Crushing Hazard (16).....	15
Crushing Hazard (17).....	15
Impaling Hazard (18).....	16
Crushing Hazard (19).....	16
Impaling Hazard (20).....	16
Impaling Hazard (21).....	16
Crushing Hazard (22).....	17
Operation (23).....	17
Entanglement and Flying Objects (24).....	17
Trap Point (25) .....	17
Crushing Hazard (26).....	18
Ether (27) .....	18
Hand (High Pressure) (28).....	19
Universal Warning (29) .....	19
Additional Messages.....	19
General Hazard Information .....	23
Pressurized Air and Water .....	23
Trapped Pressure .....	23
Fluid Penetration .....	24
Containing Fluid Spillage .....	24
Dispose of Waste Properly.....	24
Crushing Prevention and Cutting Prevention .....	24
Burn Prevention .....	25
Coolant.....	25
Oils .....	25
Batteries .....	25
Fire Prevention and Explosion Prevention .....	25
Fire Extinguisher .....	26
Lines, Tubes and Hoses .....	26
Fire Extinguisher Location.....	26
Tire Information .....	27

Electrical Storm Injury Prevention.....	27
Before Starting Engine.....	27
Engine Starting .....	28
Before Operation.....	28
Operation .....	28
Machine Operating Temperature Range .....	28
Machine Operation .....	28
Engine Stopping.....	29
Work Tools.....	30
Parking.....	30
Equipment Lowering with Loss of Hydraulic Power.....	30
Sound Information and Vibration Information .....	30
Sound Level.....	30
Vibration Level .....	31
Operator Station.....	31
Guards (Operator Protection) .....	31
Rollover Protective Structure (ROPS), Falling Object Protective Structure (FOPS).....	31
Other Guards (If Equipped) .....	31

### Product Information Section

General Information .....	33
Lifting Capacities .....	33
Examples of Estimating the Lift Operation from the Load Chart .....	34
Specifications .....	35
Intended Use .....	35
Application/Configuration Restrictions .....	35
Identification Information.....	36
Plate and Decal Locations .....	36
Emissions Certification Decal .....	39

### Operation Section

Before Operation.....	41
Mounting and Dismounting .....	41
Daily Inspection .....	41
Machine Operation.....	43
Alternate Exit .....	43
Seat .....	43
Seat Belt .....	44
Operator Controls .....	47
Operator Controls (Side Console) .....	62
Battery Disconnect Switch (If Equipped) .....	63
Boom Cylinder Lock (If Equipped) .....	64
Operation Information .....	65
Work Tools.....	72
Monitoring System .....	80
Backup Alarm .....	84
Cab Door .....	84
Engine Starting .....	84
Engine Starting .....	84
Starting Below 0 °C (32°F).....	85
Engine and Machine Warm-Up.....	85
Parking.....	86
Stopping the Machine .....	86
Stopping the Engine .....	86
Stopping the Engine if an Electrical Malfunction Occurs .....	86

Leaving the Machine .....	86	Cooling System Coolant Sample (Level 2) - Obtain .....	125
Transportation Information .....	87	Cooling System Pressure Cap - Clean/Replace .....	125
Shipping the Machine.....	87	Cooling System Water Temperature Regulator Replace .....	126
Roading the Machine .....	87	Differential Oil - Change.....	127
Lifting and Tying Down the Machine .....	88	Rear Axle Differential.....	127
Towing Information.....	89	Front Axle Differential .....	127
Towing the Machine .....	89	Differential Oil Level - Check .....	127
Types of Towing Hitches and Hydraulic Services .....	93	Rear Axle Differential.....	128
Hydraulic Hitch and Hydraulic Services .....	95	Front Axle Differential .....	128
Engine Starting (Alternate Methods) .....	96	Differential Oil Sample - Obtain .....	128
Engine Starting with Jump Start Cables.....	96	Drive Shaft Spline - Lubricate .....	129
Equipment Lowering with Loss of Hydraulic Power .....	97	Drive Shaft Universal Joint Bolts - Check .....	130
<b>Maintenance Section</b>		Engine Air Filter Primary Element - Clean/Replace .....	130
Maintenance Access .....	103	Cleaning Primary Air Filter Elements.....	131
Access Doors and Covers.....	103	Inspecting the Primary Air Filter Elements....	131
Tire Inflation Information .....	104	Engine Air Filter Primary Element - Replace .....	132
Tire Inflation with Air.....	104	Engine Air Filter Secondary Element - Replace.....	132
Tire Pressure.....	104	Engine Mounts - Inspect .....	133
Tire Inflation Pressure Adjustment.....	106	Engine Oil Level - Check .....	133
Tire Damage .....	106	Engine Oil Sample - Obtain .....	133
Tire Replacement.....	106	Engine Oil and Filter - Change.....	134
Wheel and Tire Installation.....	106	Engine Valve Lash - Check.....	135
Lubricant Viscosities and Refill Capacities.....	107	Final Drive Oil - Change.....	135
Lubricant Viscosities .....	107	Final Drive Oil Level - Check .....	136
Capacities (Refill) .....	109	Final Drive Oil Sample - Obtain .....	136
SOS Information.....	110	Fork Leveling Cylinder Pin -Lubricate .....	137
Maintenance Support .....	111	Fuel System - Prime .....	137
Welding on Machines and Engines with Electronic Controls .....	111	Fuel System Water Separator - Drain .....	138
Maintenance Interval Schedule .....	111	Fuel System Water Separator Element - Replace (Tier II) .....	139
Axle Breathers - Clean/Replace.....	113	Fuel System Water Separator Element - Replace (Tier III) .....	140
Backup Alarm - Test.....	113	Fuel Tank Cap - Clean.....	140
Battery - Recycle.....	113	Fuel Tank Water and Sediment - Drain .....	141
Battery or Battery Cable -Inspect/Replace .....	113	Fuses and Relays - Replace .....	142
Belt - Inspect/Replace .....	114	Fuses .....	142
Inspect .....	114	Relays.....	143
Replace .....	114	Indicators and Gauges - Test.....	144
Boom Cylinder Pin - Lubricate .....	115	Longitudinal Stability Indicator - Calibrate.....	144
Boom Head Section - Lubricate .....	115	Longitudinal Stability Indicator -Test .....	144
Boom Pivot Shaft - Lubricate .....	115	Initial Test .....	144
Boom Telescoping Cylinder Air- Purge .....	115	Second Test.....	145
Boom Wear Pad Clearance -Inspect/Adjust.....	116	Oil Filter - Inspect.....	145
Adjustment .....	117	Inspect a Used Filter for Debris .....	145
Boom and Frame - Inspect.....	118	Parking Brake - Adjust .....	146
Braking System - Test.....	119	Radiator Core - Clean .....	146
Service Brake.....	119	Refrigerant Dryer - Replace .....	147
Parking Brake.....	120	Rollover Protective Structure (ROPS) and Falling Object Protective Structure (FOPS) -Inspect .....	147
Cab Air Filter - Clean/Replace.....	120	Seat Belt - Inspect.....	148
Primary Cab Air Filter.....	120	Seat Belt - Replace .....	148
Secondary Cab Air Filter .....	121	Tire Inflation - Check.....	148
Circuit Breakers - Test .....	121	Transmission and Hydraulic System Oil - Change .....	149
Compensating Cylinder Bearing - Lubricate.....	122	Transmission and Hydraulic System Oil Filter - Replace.....	150
Cooling System Coolant - Change.....	122		
Cooling System Coolant Level - Check.....	123		
Cooling System Coolant Sample (Level 1) - Obtain.....	124		

## Table of Contents

Transmission and Hydraulic System Oil Level - Check .....	151
Transmission and Hydraulic System Oil Sample - Obtain .....	152
Transmission and Hydraulic System Tank Breather - Clean .....	152
Turbocharger - Inspect .....	153
Wheel Nut Torque - Check .....	153
Window Washer Reservoir - Fill .....	153
Window Wiper - Inspect/Replace .....	153
Windows - Clean .....	154
Work Tool - Inspect/Replace .....	154
Forks .....	154
Buckets .....	156
<b>Reference Information Section</b>	
Approved Work Tools .....	157





---

## Foreword

### Literature Information

This manual must be stored in the operator's compartment in the literature holder or seat back literature storage area.

This manual contains safety information, operation instructions, transportation information, lubrication information and maintenance information.

Some photographs or illustrations in this publication show details or attachments that can be different from your machine. Guards and covers might have been removed for illustrative purposes.

Continuing improvement and advancement of product design might have caused changes to your machine which are not included in this publication. Read, study and keep this manual with the machine.

Whenever a question arises regarding your machine, or this publication, please consult your Caterpillar dealer for the latest available information.

### Safety

The safety section lists basic safety precautions. In addition, this section identifies the text and locations of warning signs and labels used on the machine.

Read and understand the basic precautions listed in the safety section before operating or performing lubrication, maintenance and repair on this machine.

### Operation

The operation section is a reference for the new operator and a refresher for the experienced operator. This section includes a discussion of gauges, switches, machine controls, attachment controls, transportation and towing information.

Photographs and illustrations guide the operator through correct procedures of checking, starting, operating and stopping the machine.

Operating techniques outlined in this publication are basic. Skill and techniques develop as the operator gains knowledge of the machine and its capabilities.

## Maintenance

The maintenance section is a guide to equipment care. The Maintenance Interval Schedule (MIS) lists the items to be maintained at a specific service interval. Items without specific intervals are listed under the "When Required" service interval. The Maintenance Interval Schedule lists the page number for the step-by-step instructions required to accomplish the scheduled maintenance. Use the Maintenance Interval Schedule as an index or "one safe source" for all maintenance procedures.

### Maintenance Intervals

Use the service hour meter to determine servicing intervals. Calendar intervals shown (daily, weekly, monthly, etc.) can be used instead of service hour meter intervals if they provide more convenient servicing schedules and approximate the indicated service hour meter reading. Recommended service should always be performed at the interval that occurs first.

Under extremely severe, dusty or wet operating conditions, more frequent lubrication than is specified in the maintenance intervals chart is necessary.

### Certified Engine Maintenance

Proper maintenance and repair is essential to keep the engine and machine systems operating correctly. As the heavy duty off-road diesel engine owner, you are responsible for the performance of the required maintenance listed in the Owner Manual, Operation and Maintenance Manual, and Service Manual.

It is prohibited for any person engaged in the business of repairing, servicing, selling, leasing, or trading engines or machines to remove, alter, or render inoperative any emission related device or element of design installed on or in an engine or machine that is in compliance with the regulations (40 CFR Part 89). Certain elements of the machine and engine such as the exhaust system, fuel system, electrical system, intake air system and cooling system may be emission related and should not be altered unless approved by Caterpillar.

### Machine Capacity

Additional attachments or modifications may exceed machine design capacity which can adversely affect performance characteristics. Included would be stability and system certifications such as brakes, steering, and rollover protective structures (ROPS). Contact your Caterpillar dealer for further information.

---

## Contact Information

### For:

- Accident Reporting and Product Safety Publications
- Current Owner Updates
- Questions Regarding Product Applications and Safety
- Standards and Regulations Compliance Information
- Questions Regarding Product Modifications

### Contact:

Product Safety and Reliability Department  
JLG Industries, Inc.  
1 JLG Drive  
McConnellsburg, PA 17233  
USA  
or Your Local JLG Office

### In USA:

Toll Free: 877-JLG-SAFE (877-554-7233)

### Outside USA:

Phone: 717-485-5161 or 717-485-6591

**E-mail:** [ProductSafety@JLG.com](mailto:ProductSafety@JLG.com)

# Safety Section

## Safety Messages

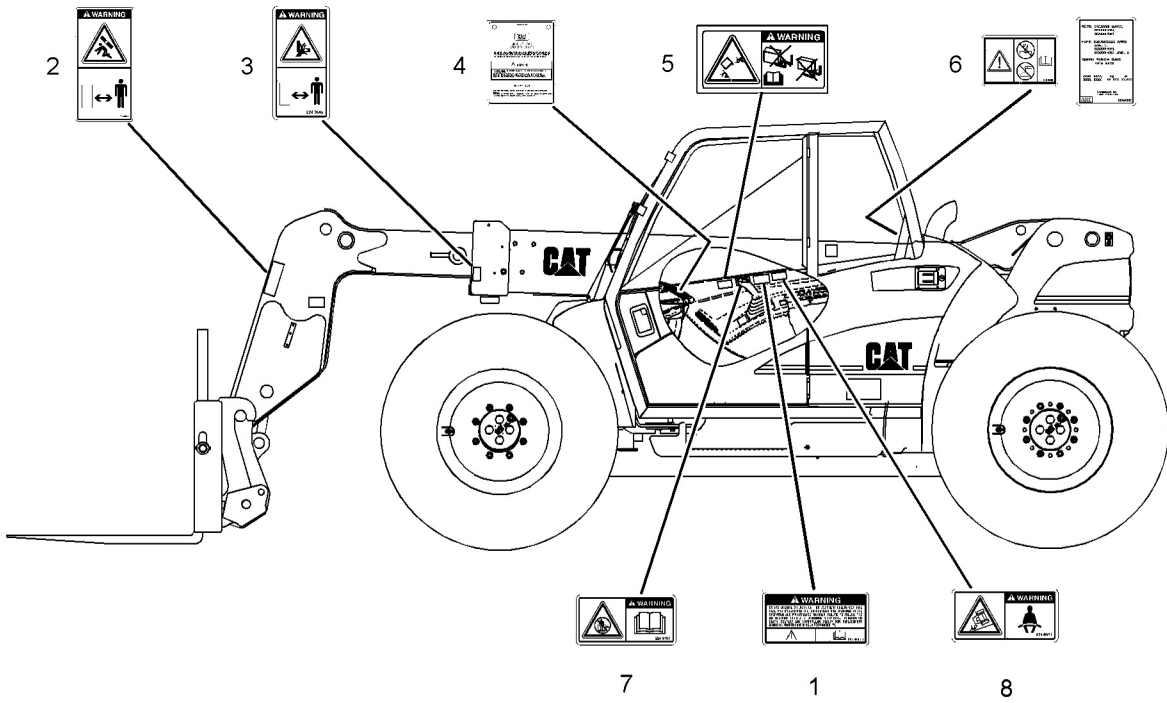


Illustration 2

g01106280

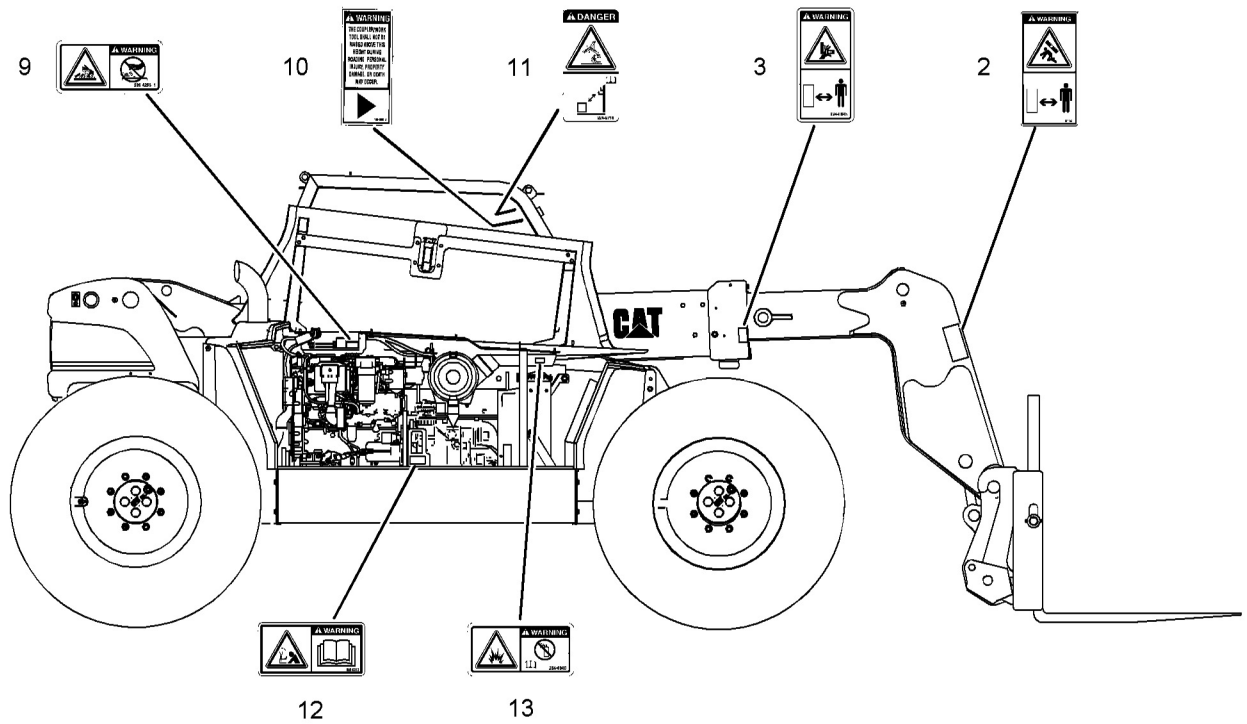


Illustration 3

g01106290

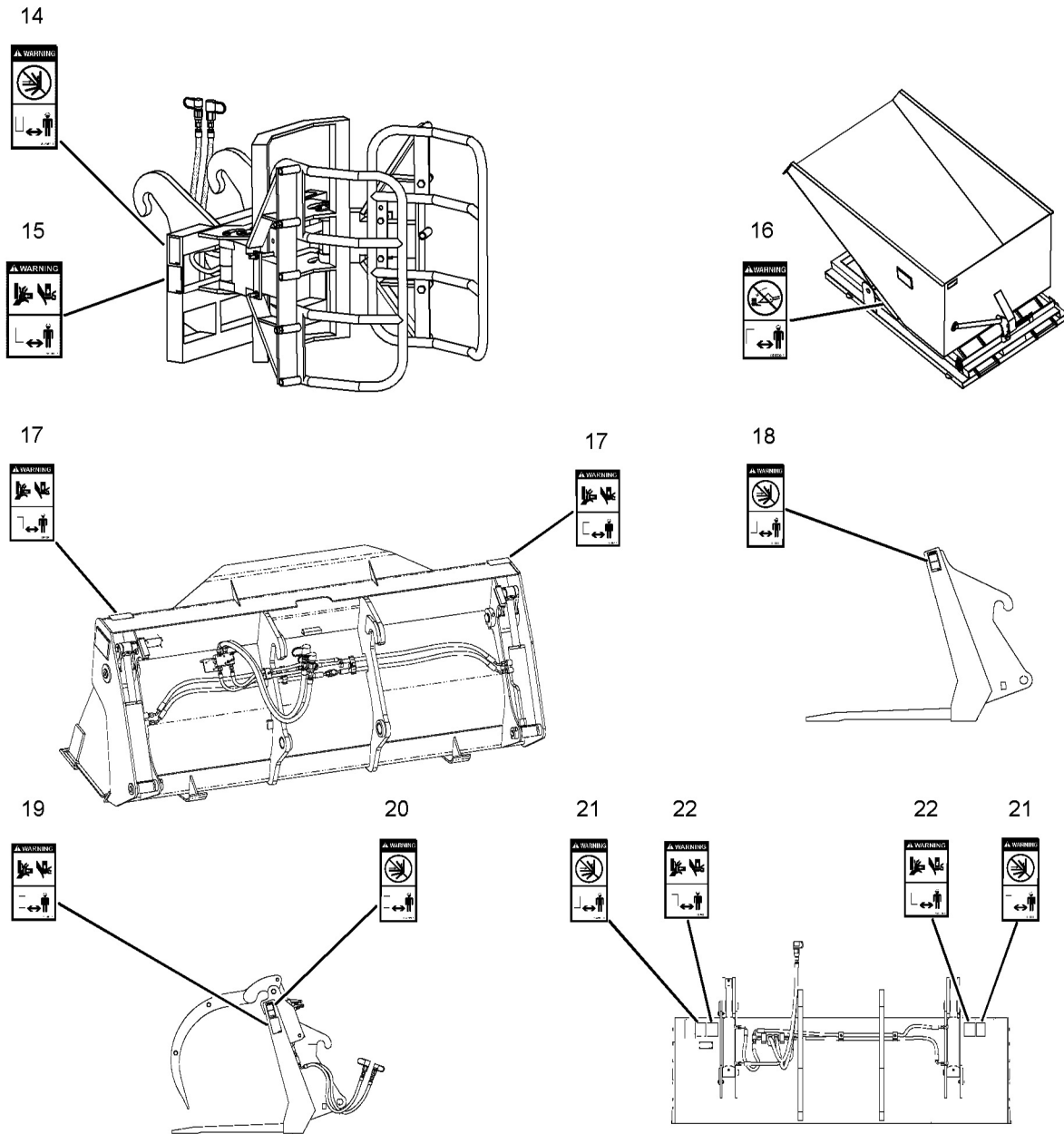


Illustration 4

g01106462

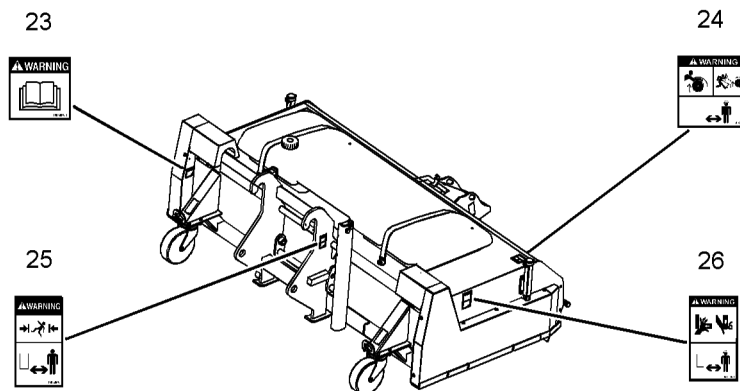


Illustration 5

g01106485

**Please Click Here To Download The Complete Manual**  
**Download Other Manuals**  
**If Having Any Questions Feel Free To Contact us**

**[admin@servicemanualbit.com](mailto:admin@servicemanualbit.com)**