



Parts Manual

Chassis, Mast & Attachment

| | |
|---------------|---------------|
| DP100N | T36A-10011-uP |
| DP120N | T37A-10011-uP |
| DP135N | T38A-10011-uP |
| DP150N | T39A-10011-uP |
| DP160N | T40A-10011-uP |

Genuine Original Equipment Parts

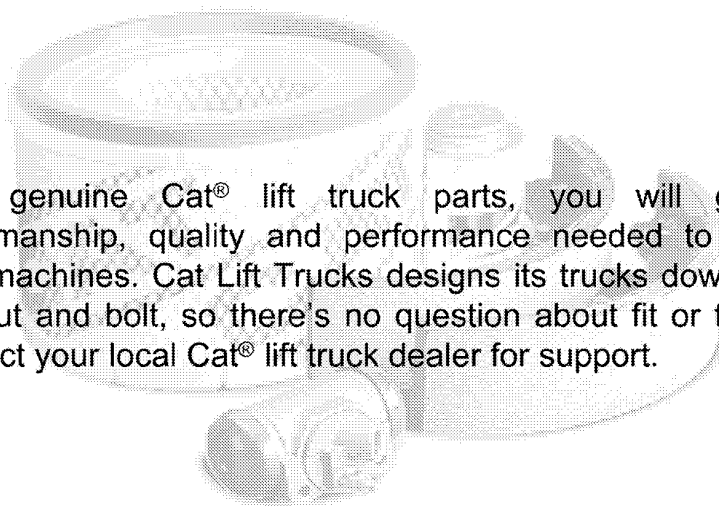
Everything You've Come to Expect



Made to Cat® Lift Truck Specifications

Once you experience the Cat Lift Trucks quality, you will never want to compromise. That's why we advise you to service your Cat® lift trucks with genuine original equipment parts. Your truck will retain its value, continue to perform when you need it and deliver what you expect.

| Genuine Parts |
|---|
| Made to precise design specifications from original engineered drawings |
| Consistent and correct tolerance and material quality |
| More cost-effective; imitations could mean shorter life and higher cost |
| Tested and improved for greater performance and reliability |
| Helps ensure emissions are kept at lowest and safest levels |
| Lower cost-per-hour operation |
| Better protection of your investment |



With genuine Cat® lift truck parts, you will get the craftsmanship, quality and performance needed to service your machines. Cat Lift Trucks designs its trucks down to the last nut and bolt, so there's no question about fit or function. Contact your local Cat® lift truck dealer for support.

Insist on Genuine Cat Lift Truck Parts

Quality • Reliability • Customer Service

GUIDE FOR USE OF PARTS LIST

1. This Parts List contains complete lists of parts for the following Cat Lift Trucks : DP100N, DP120N, DP135N, DP150N and DP160N

01 : Chassis parts

02 : Mast parts

03 to 08 : Attachment parts

2. This Parts List is applicable to the following serial numbers:

DP100N : T36A-10011-uP

DP120N : T37A-10011-uP

DP135N : T38A-10011-uP

DP150N : T39A-10011-uP

DP160N : T40A-10011-uP

3. When ordering parts, give your Cat Lift Truck dealer or distributor the following information:

(1) Part number (or assembly number) and part name

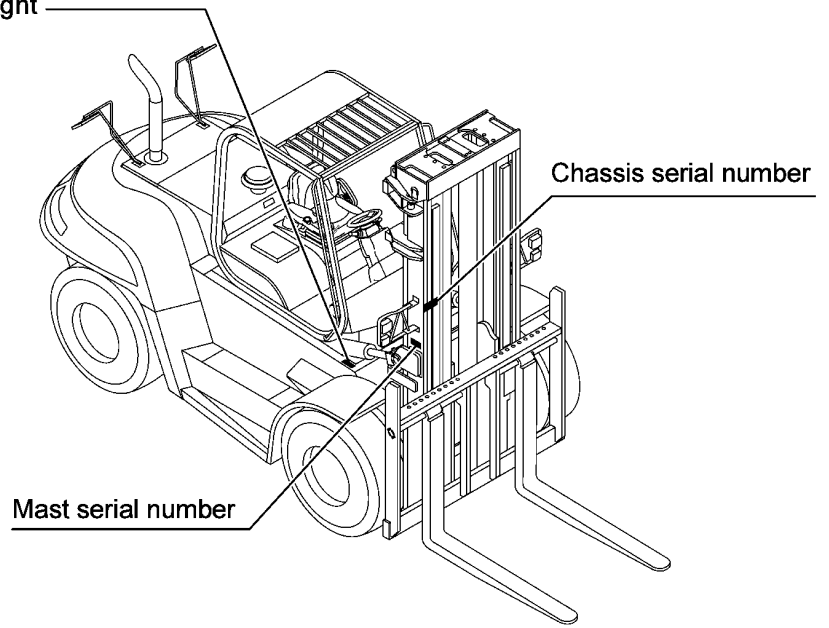
(2) Quantity required

(3) Model and serial number of your lift truck

NOTE : In cases where the ordered parts happen to be out of stock, substitute parts (interchangeable with those ordered) will be supplied.

4. Serial number locations

If the nameplates come off or become illegible, give the Cat Lift Truck dealer or distributor the chassis serial number punched on the right front side of the top of the frame.



5. Indication of assembled bolts with washer

Of the standard bolts, those with washers are identified by the symbol "B/W" in the Description column of each list. (Part Name : BOLT,W/WASHER)

6. Indication of combination for replaceability -"G"-

The new part to be used in combination with the other part in place of an old part is identified by the symbol "G" in the interchangeability code column of each list.

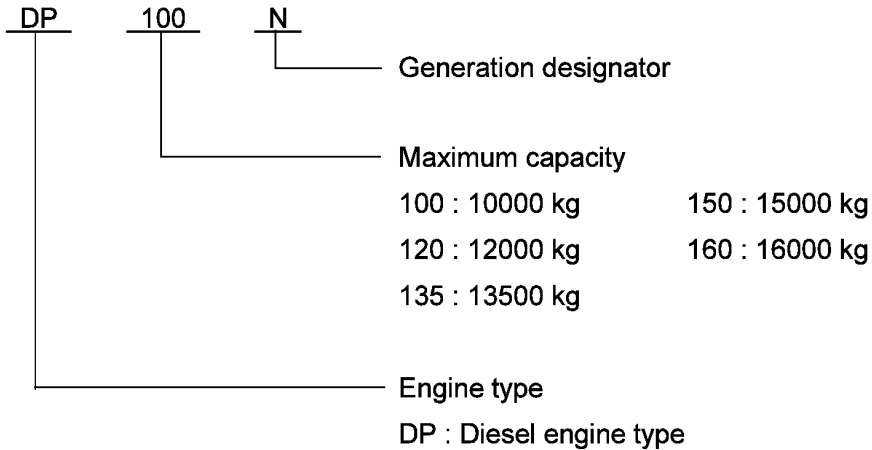
For the parts to be combined, refer to the listing (beginning with the page E1) at the end of the parts list.

7. For the numerical index, refer to the page beginning with C1 at the end of this parts list.

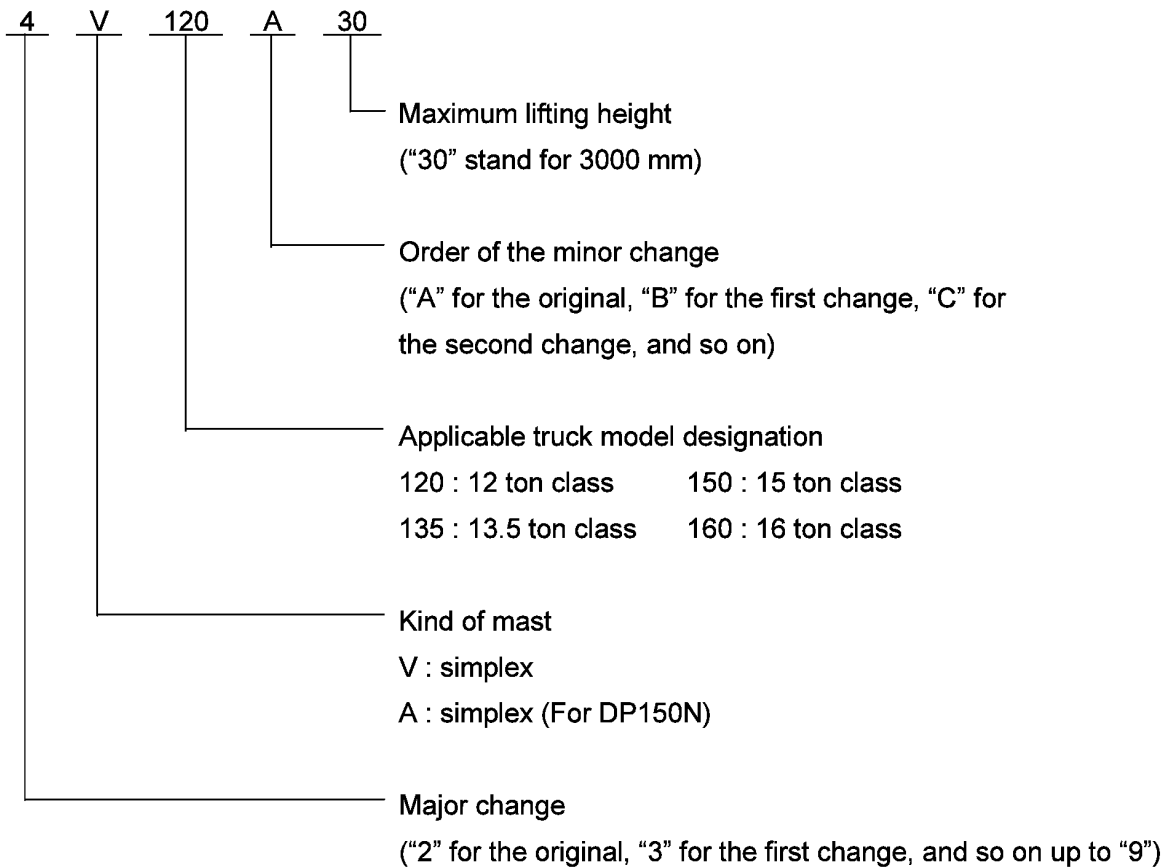
8. The parts and part numbers are subject to change without prior notice.

Chassis and Mast Model Identifications

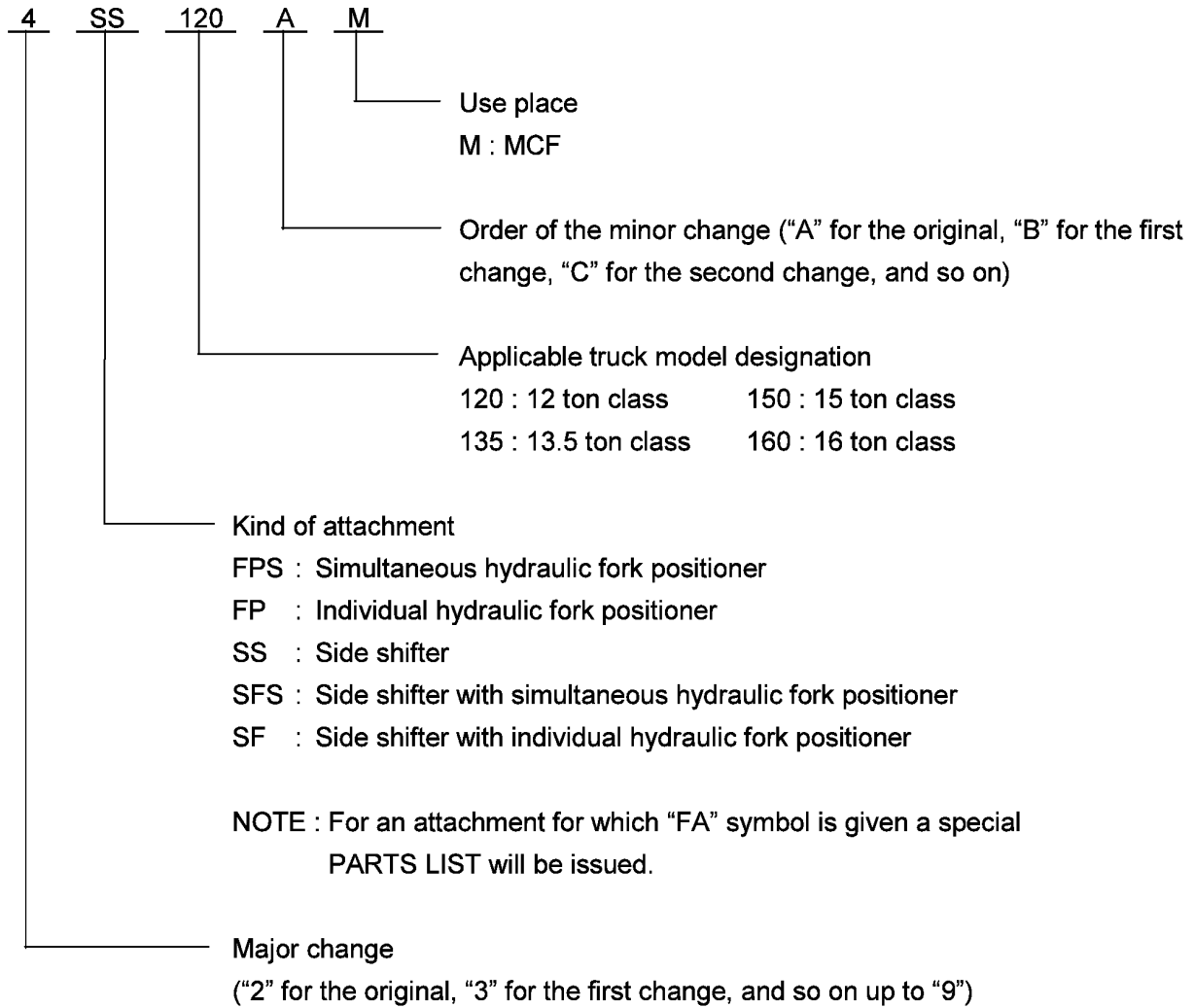
[Chassis]



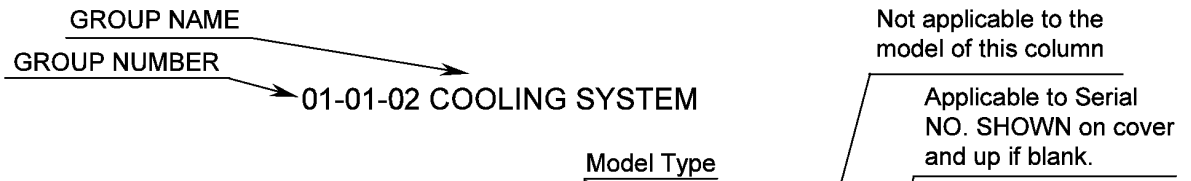
[Mast]



Attachment Model Identifications



SAMPLE OF PARTS LIST



| REF. -NO. | PART NO. | R / P | S E N P | C E N Q | PART NAME & DESCRIPTION | Q T Y | MODEL & | | | | M / R | V R D |
|-----------|----------------|-------------|------------------|------------------|-------------------------|-------------|-----------------|-----------------|-----------------|-----------------|-------------|-------------|
| | | | | | | | FD10 | FD14 | FD15 | FD18 | | |
| | | | | | | | FROM@ -@UPTO | FROM@ -@UPTO | FROM@ -@UPTO | FROM@ -@UPTO | | |
| 1 | 91301-00200 | | | | FAN, COOLING | 1 | | | | | | |
| 2 | 91301-40100 | | | | SUPPORT | 1 | | • | | • | | |
| 3 | F3200-01700 | | | | RING, SNAP | 1 | | | | | | A |
| 4 | 91301-11030 | | | | PULLEY ASSY, DRIVEN | 1 | | | | | | A |
| 4 | 01 F3202-04700 | | | | RING, SNAP | 1 | | | | | | A |
| 4 | 02 91301-00900 | | | | PULLEY | 1 | | | | | | A |
| 4 | 03 91301-11300 | | | | BEARING, BALL | 1 | | | | | | A |
| 5 | F1805-06020 | | | C | BOLT, W/WASHER | 4 | -10180 | • | -60160 | • | | A |
| | F1805-10020 | N | 1 | | BOLT, W/WASHER | 4 | 10181- | | 60161- | | | A |
| 6 | 91207-07500 | | | | NUT | 4 | | | | | | A |
| 7 | 91301-10600 | | | | PULLEY | 1 | | | | | | A |
| 8 | * BOSS | | | | BOSS | 1 | | | | | | A |
| 9 | 91201-01700 | | | Q | SHIM | 1 | @10151 | @40150 | @60140 | @80130 | | A |
| | 91202-01700 | | | 1 | SHIM | 2 | 10152@ | *40151@ | 60141@ | 80131@ | | A |
| 10 | F3200-01500 | | | | RING, SNAP | 1 | | | | | | A |

Part not to be supplied See (3)

See (4) Interchangeability codes.

See (5) Sequence-of-change numbers.

See (6) Change codes.

See (2) Reference number

See (8)-(a) Description codes

See (8)-(b) Description

See (8)-(c) Specification codes.

Quantity per unit

Applicable from serial No. indicated.

High-demand part. See (11)

Part newly changed or added. See (12)

Applicable from 40151 (Scheduled) if suffixed with @ and sometimes differs from real serial No.

Applicable up to 40150 (Scheduled) if prefixed with @ and sometimes differs from real Serial No.

NOTE: Some of model designations, number of variations and serial numbers, indicated above, are quoted from other parts lists.

Read these items of information as those for this parts list.

NOTE: For the description of each item, refer to the pages which follow.

HOW TO USE THIS PARTS LIST (to be referred to together with the former SAMPLE OF PARTS LIST)

(1)
01-01-01 COOLING SYSTEM COMMON

- 3-

| REF. -NO. | PART NO. | R / P | S E N Q G | PART NAME & DESCRIPTION | Q T Y | MODEL & APPLICABLE SERIAL NO. | | | | | M / R | V R D |
|--------------|-------------|-------------|-----------------------|-------------------------|-------------|-------------------------------|---------------------|---------------------|---------------------|---------------------|-------------|-------------|
| | | | | | | DP100N | DP120N | DP135N | DP150N | DP160N | | |
| | | | | | | FROM - -@UPTO | FROM - -@UPTO | FROM - -@UPTO | FROM - -@UPTO | FROM - -@UPTO | | |
| 1 | ME039970 | | | FAN | 1 | | | | | | | |
| 2 | F1035-10016 | | | BOLT | 4 | | | | | | | |
| 3 | F2515-10000 | | | WASHER, SPRING | 4 | | | | | | | |
| 4 | 92E01-00800 | | | SUPPORT, FAN | 1 | | | | | | | |
| 5 | F1805-10020 | | | BOLT, W/WASHER | 4 | | | | | | | |
| (2) | (3) | (4) | (6) | (7) | (8) | (9) | (10) | (11) | (12) | | | |
| | | | (5) | | | | | | | | | |

The items (1) thru (12) are as described below:

(1) Compiling system

The systems of a unit are grouped according to their location in the unit. The groups, each identified by group number, are listed in the order by CONTENTS. Each group is preceded by an "exploded view" which clearly illustrates each part in its correct relation to the other parts in the illustration.

(2) Reference number

Abbreviated to "REF. No.," this number is used to locate a part in the illustration. In cases where the reference number is of three to four figures, the first and second figures show the reference number of an assembly, and the last two figures show the numbers of its component parts.

(3) Part numbers

The part numbers shown in this parts list are those assigned to Cat Lift Truck genuine parts.

NOTE : Parts with asterisk (*) are not supplied individually.

(4) Interchangeability codes

The interchangeability codes used in this parts list are as follows:

| PART NO. | Code (R/P) | DESCRIPTION |
|--------------------|------------|---|
| A (Old) B (New) | R | B (new part) and A (old part) are mutually interchangeable |
| A (Old) B (New) | 1 | A (Old part) is not supplied. B (new part) can be substituted for A (Old part). |
| A (Old) B (New) | 3 | B (new part) can be substituted for A (old part). [A (old part) cannot be substituted for B (new part).] |
| A (Old) B (New) | N | B (new part) and A (old part) are not interchangeable. |
| A (Old) B (New) | G | B (new part) can be substituted for A (old part) in combination with other part(s). (For the parts to be combined, refer to the listing beginning with the page E1 at the end of this parts list.) |

(5) Sequence-of-change numbers

The parts are changed for improved quality or performance. Their changes are indicated in sequence by numerals (1.2.3...)

Blank : Original

1 : 1st change

2 : 2nd change

3 : 3rd change

(6) Change codes

These codes indicate the reason or purpose of changes of the parts.

A : Added part (a part entered into service)

C : Change of part number

D : Deleted part (a part applicable up to the serial no. expressed in Serial No. column)

E : Added part except above reasons

Q : Change of quantity

(7) Part name

Abbreviations are sometimes used. For the abbreviations, refer to TABLE OF SYMBOLS & ABBREVIATIONS appeared in hind pages of this general information chapter.

NOTE: The words “left” (L.H.) and “right” (R.H.), when used in this list, are as these directions would appear from the seat facing forward.

(8) Description & specification codes

(a) Description codes (expressed in the first part of Description column).

B/W : Assembled bolt (with washer)

KIT : Part supplied as a kit

STD : Standard part

OPT : Optional part

AR : Part used, as required or by selection or in adjusted quantity for necessity

SFN : Semi-finished part

(b) The Description codes in above paragraph (a) are followed by supplementary Explanation such as dimensions (thickness, length, etc.) , manufacturer part number, manufacturer name, etc. as occasion demands.

NOTE: Unless otherwise indicated, the dimensions are shown in millimeter and the name of unit is abbreviated.

(Examples) Thickness : T = 1.00 Length : L = 1000

Width : W = 1500 Height : H = 500

(c) Specification codes

Each specification or type of model and/or selective specifications of a unit are indicated by codes of three figures. For these codes, refer to LIST OF SPECIFICATION CODES appeared in hind pages of this general information chapter.

NOTE: Unless indicated by the specification codes, the parts may be used for the products of all specifications.

(Examples) DRY : with synchromesh transmission (with dry clutch)

(d) The parts indicated as “NOT SHOWN”, such as component parts of repair kit, are not shown in the illustration.

(9) Quantity

Quantity of part or assembly and its component parts required for one unit of product is indicated.

NOTE: In case “AR” appears in QTY column, it is required to adjust quantity for use.

(10) Model & Applicable serial numbers

(a) Model : Model, type, specification, destination, etc. of product to which a parts list applies are indicated in the title column of each variation.

(b) Applicable serial numbers : Applicable serial numbers of product are indicated in the “FROM” or “UPTO” column. Serial numbers with “@” are scheduled ones and sometimes differ from the real serial numbers. If the “FROM” column is blank, the parts is applicable to serial number shown on this cover and up.

NOTE: In this parts catalogue, the appropriate production date is indicated in the SERIAL NO. column instead of the applicable serial number.

| |
|--|
| [Example of approximate date of production] -02612 : Manufactured not later than December, 2006 02701- : Manufactured in and after January, 2007 |
|--|

When placing a order for any of the chassis or mast parts which are classified “N” (not interchangeable) or “G” (interchangeable as an assembly), ask and confirm to our authorized dealer in advance by giving the chassis or mast model name and serial number to choose an applicable part between the new and old parts.

(11) Management rank

Parts ranked as “A” are high-demand parts. This ranking is to be referred to by dealers, and is devised to facilitate and rationalize their distribution, stocking and inventory of the parts.

(12) Parts changed or added after the last parts list that has been published are identified by “V.”

TABLE OF SYMBOLS & ABBREVIATIONS

| SYMBOL | DESCRIPTION | | SYMBOL | DESCRIPTION | |
|---------|---------------------------|--|--------|----------------|--|
| ACCEL | ACCELERATOR | | EQUIP | EQUIPMENT | |
| ADJ | ADJUSTING (ADJUSTABLE) | | EXH | EXHAUST | |
| AIR-CON | AIR-CONDITIONER | | E/TNK | EXPANSION TANK | |
| ASSY | ASSEMBLY | | FITT | FITTING | |
| ATT | ATTACHMENT | | FLEX | FLEXIBLE | |
| AUTO | AUTOMATIC | | FR | FRONT | |
| AUX | AUXILIARY | | GSKT | GASKET | |
| AR | AS REQUIRED | | GEN | GENERATOR | |
| BATT | BATTERY | | GOV | GOVERNOR | |
| BRG | BEARING | | G/N | GROUP NUMBER | |
| BRKT | BRACKET | | H/EXCH | HEAT EXCHANGER | |
| BUSH | BUSHING | | HEX | HEXAGON | |
| CARB | CARBURETTOR | | HYD | HYDRAULIC | |
| C/L | CENTERLINE | | H= | HEIGHT | |
| COMPR | COMPRESSOR | | IND | INDUSTRIAL | |
| CON-ROD | CONNECTING-ROD | | INJ | INJECTION | |
| C/MBR | CROSS-MEMBER | | INSTAL | INSTALLATION | |
| CYL | CYLINDER | | INST | INSTRUMENT | |
| DIA | DIAMETER | | INTLK | INTERLOCK | |
| DIFF | DIFFERENTIAL | | JUNC | JUNCTION | |
| DISTR | DISTRIBUTOR | | KD | KNOCKDOWN | |
| DR | DRIVE | | L.H. | LEFT HAND | |
| D= | OUT DIAMETER | | LUB | LUBRICATION | |
| ELEC | ELECTRIC | | L= | LENGTH | |
| ENG | ENGINE | | MANF | MANIFOLD | |
| | | | MAX | MAXIMUM | |

TABLE OF SYMBOLS & ABBREVIATIONS

| SYMBOL | DESCRIPTION | | SYMBOL | DESCRIPTION | |
|---------|------------------------|--|---------|-------------------------|--|
| M.L.H | MAXIMUM LIFTING HEIGHT | | TEMP | TEMPERATURE | |
| MIN | MINIMUM | | TERM | TERMINAL | |
| MTR | MOTOR | | T/CONV | TORQUE-CONVERTER | |
| MTG | MOUNTING | | T/F | TRANSFER | |
| NO. | NUMBER | | T/M | TRANSMISSION | |
| OPT | OPTION | | T/HSG | TURBINE-HOUSING | |
| O/D | OVER DRIVE | | T/C | TURBOCHARGER | |
| O.S | OVERSIZE | | T= | THICKNESS | |
| PTO | POWER TAKE-OFF | | U/BODY | UNDERBODY | |
| P/S | POWER STEERING | | U.S | UNDERSIZE | |
| PRESS | PRESSURE | | UNIV | UNIVERSAL | |
| P/N | PART NUMBER | | VAC | VACUUM | |
| QTY | QUANTITY | | VENT | VENTILATOR | |
| RAD | RADIATOR | | W/STRIP | WEATHERSTRIP | |
| RE | REAR | | W/ | WITH | |
| REG | REGULATOR | | W/O | WITHOUT | |
| REV | REVERSE | | W/W | WOODWARD | |
| R.H. | RIGHT HAND | | W/PMP | WATER PUMP | |
| REF.NO. | REFERENCE NUMBER | | W= | WIDTH | |
| SECT | SECTION | | Z= | NUMBER OF GEAR TEETH | |
| S/MBR | SIDE MEMBER | | & | AND | |
| STD | STANDARD | | @ | UNCONFIRMED | |
| SUPT | SUPPORT | | * | PART NOT TO BE SUPPLIED | |
| SYM | SYMBOL | | | | |
| SYNCH | SYNCHRONIZER | | | | |
| SYS | SYSTEM | | | | |

LIST OF SPECIFICATION CODES

| SPEC. | Code | DESCRIPTION |
|---|--|--|
| [A • V] Kind of SIMPLEX MAST | A30 A33 A35 A37 A40 A45 A50 A55 A60 A65 A66 A70 | 4A150A30 [Maximum lifting height 3.0m] 4A150A33 [Maximum lifting height 3.3m] 4A150A35 [Maximum lifting height 3.5m] 4A150A37 [Maximum lifting height 3.7m] 4A150A40 [Maximum lifting height 4.0m] 4A150A45 [Maximum lifting height 4.5m] 4A150A50 [Maximum lifting height 5.0m] 4A150A55 [Maximum lifting height 5.5m] 4A150A60 [Maximum lifting height 6.0m] 4A150A65 [Maximum lifting height 6.5m] 4A150A66 [Maximum lifting height 6.6m] 4A150A70 [Maximum lifting height 7.0m] |
| | V30 V33 V35 V37 V40 V45 V50 V55 | V120A30 4V135A30 V160A30 V120A33 4V135A33 V160A33 V120A35 4V135A35 V160A35 V120A37 4V135A37 V160A37 V120A40 4V135A40 V160A40 V120A45 4V135A45 V160A45 V120A50 4V135A50 V160A50 V120A55 4V135A55 V160A55 Maximum lifting height 3.0m Maximum lifting height 3.3m Maximum lifting height 3.5m Maximum lifting height 3.7m Maximum lifting height 4.0m Maximum lifting height 4.5m Maximum lifting height 5.0m Maximum lifting height 5.5m |

MAST PARTS

Please Click Here To Download The Complete Manual
Download Other Manuals
If Having Any Questions Feel Free To Contact us

admin@servicemanualbit.com