

## JCB 8250 Fastrac

Service Manual - JCB 8250 Fastrac

[Section 1 - General Information](#)

[Section 2 - Care and Safety](#)

[Section 3 - Maintenance](#)

[Section A - Optional Equipment](#)

[Section B - Body and Framework](#)

[Section C - Electrics](#)

[Section D - Controls](#)

[Section E - Hydraulics](#)

[Section F - Transmission](#)

[Section G - Brakes](#)

[Section H - Steering](#)

[Section S - Suspension](#)

[Section T - Engine](#)



Publication No.  
**9803/8070-4**



Copyright © 2004 JCB SERVICE. All rights reserved. No part of this publication may be reproduced, stored in a retrieval system, or transmitted in any form or by any other means, electronic, mechanical, photocopying or otherwise, without prior permission from JCB SERVICE.



**Notes:**

---

---

---

---

---

---

---

---

---

---

---

---

---

---

---

---

---

---

## General Information

Service Manual - JCB 8250 Fastrac

[Section 1 - General Information](#)

[Section 2 - Care and Safety](#)

[Section 3 - Maintenance](#)

[Section A - Optional Equipment](#)

[Section B - Body and Framework](#)

[Section C - Electrics](#)

[Section D - Controls](#)

[Section E - Hydraulics](#)

[Section F - Transmission](#)

[Section G - Brakes](#)

[Section H - Steering](#)

[Section S - Suspension](#)

[Section T - Engine](#)



Publication No.  
**9803/8070-2**



Copyright © 2004 JCB SERVICE. All rights reserved. No part of this publication may be reproduced, stored in a retrieval system, or transmitted in any form or by any other means, electronic, mechanical, photocopying or otherwise, without prior permission from JCB SERVICE.



**Notes:**

---

---

---

---

---

---

---

---

---

---

---

---

---

---

---

---

---



# Section 1 - General Information

---

<b>Contents</b>	<b>Page No.</b>
<b>Identifying the Machine</b>	
Serial Numbers .....	1 - 1
Serial Number Plate .....	1 - 1
<b>Standard Torque Settings</b>	
Zinc Plated Fasteners and Dacromet Fasteners .....	1 - 3
Introduction .....	1 - 3
Zinc Plated Fasteners (golden finish) .....	1 - 4
Dacromet Fasteners (mottled silver finish) .....	1 - 5
Hydraulic Connections .....	1 - 6
'O' Ring Face Seal System .....	1 - 6
'Torque Stop' Hose System .....	1 - 9
<b>Special Tools</b>	
Numerical List .....	1 - 10
Tool Detail Reference .....	1 - 14
Section B - Body and Framework .....	1 - 14
Section C - Electrics .....	1 - 17
Section E - Hydraulics .....	1 - 20
Section F - Transmission .....	1 - 24
Section G - Brakes .....	1 - 25
Section S - Suspension .....	1 - 26
<b>Service Consumables</b>	
Sealing and Retaining Compounds .....	1 - 27



# Section 1 - General Information

---

Contents

Page No.

# Identifying the Machine

## Serial Numbers

### Serial Number Plate

Each machine has a serial number plate **X** located inside the cab. The 17 digit Vehicle Identification Number (VIN), and the serial numbers of the engine and transmission are stamped on the plate.

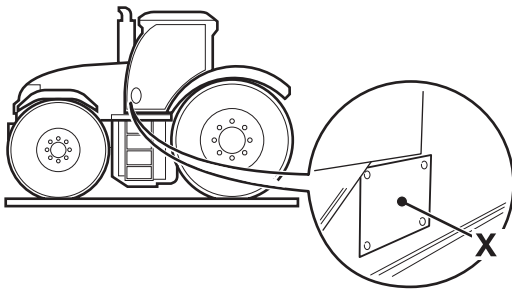


Fig 1.

### Typical Vehicle Identification No. (VIN)

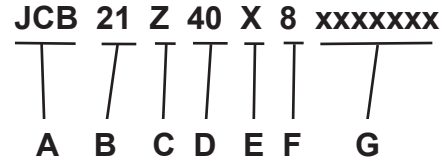


Fig 2.

C038640-B1

- A Manufacturing code**
- B Engine type**
- C Transmission type (gearbox & axle combination)**
- D Vehicle max. speed**  
 40 = 40 kph  
 50 = 50 kph  
 65 = 65 kph
- E Authenticity Code**
- F Year Code (e.g. 8 = 2008)**
- G Serial number**

### Unit Identification

The serial number of each major unit is also stamped on the unit itself as shown below. If a major unit is replaced by a new one, the serial number on the plate will be wrong. Either stamp the new number of the unit on the identification plate, or simply stamp out the old number. This will prevent the wrong unit number being quoted when replacement parts are ordered.

Engine	M
Gearbox	N
Front axle	P
Rear axle	R

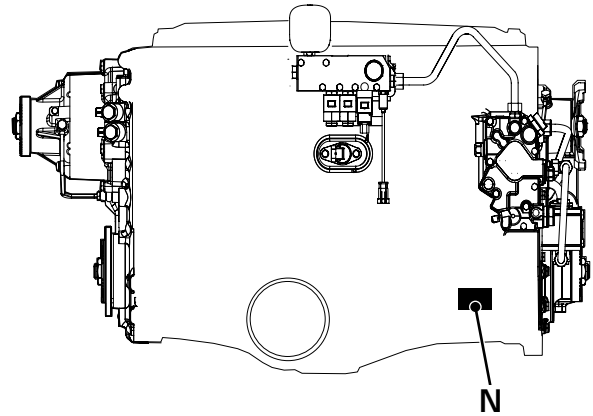


Fig 4.

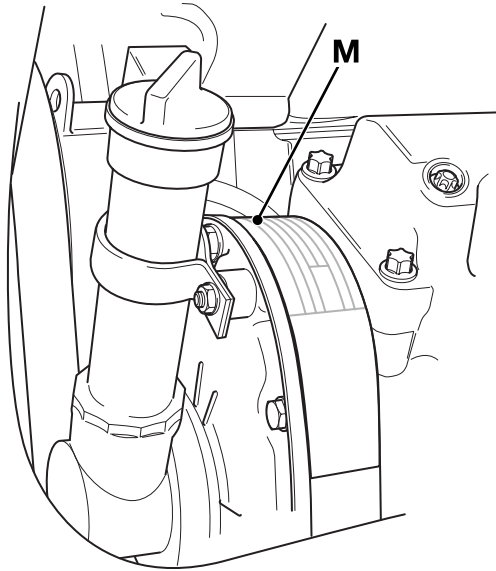


Fig 3.

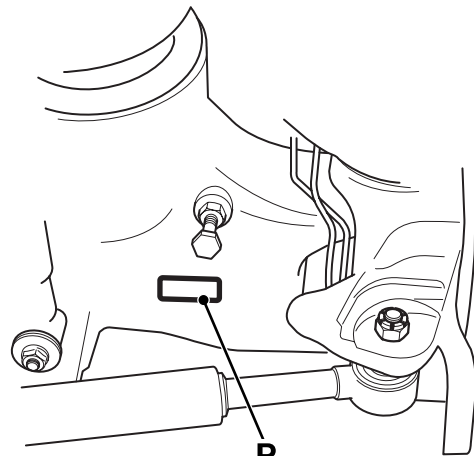


Fig 5.

C022680

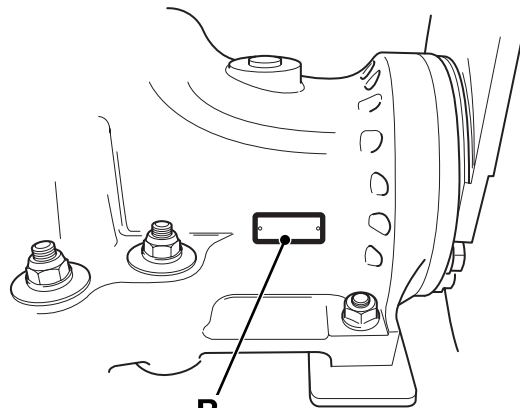


Fig 6.

C022670



**Please Click Here To Download The Complete Manual**  
**Download Other Manuals**  
**If Having Any Questions Feel Free To Contact us**

**[admin@servicemanualbit.com](mailto:admin@servicemanualbit.com)**